

## VICTORY — HATTERAS



**Судостроитель:** HATTERAS

**Год постройки:** 2008

**Модель:** Моторная яхта

**Цена:** ЦЕНА ЯХТЫ ПО ЗАПРОСУ

**Местонахождение:** United States

**Длина общая:** 80' 0" (24.38m)

**Ширина:** 21' 3" (6.48m)

**Макс. осадка:** 5' 4" (1.63m)

**Крейс. скорость:** 21 Kts. (24 MPH)

**Макс. скорость:** 24 Kts. (28 MPH)

Купить **VICTORY — HATTERAS** а также выбрать подходящую вам яхту из нашего каталога яхт вам поможет опытный яхтенный брокер Андрей Шестаков. На сегодняшний день компания **Shestakov Yacht Sales Inc.** имеет большое количество яхт в собственном списке продаж, а также тесно сотрудничает со всеми крупными яхтенными производителями по всему миру.

Для того чтобы купить яхту **VICTORY — HATTERAS** а также проконсультироваться по любому вопросу связанному с покупкой, продажей, чартером яхт позвоните по телефону **+7(918)465-66-44**.

# ОГЛАВЛЕНИЕ

ОГЛАВЛЕНИЕ	2
ХАРАКТЕРИСТИКИ	4
Обзор	4
Основная информация	5
Размеры	5
Скорость, вместимость и масса	5
Размещение	5
Корпус и палуба	5
Информация о двигателе	6
ПОДРОБНОЕ ОПИСАНИЕ	7
Accommodations	7
Main Salon & Dining	7
Galley	8
Master Stateroom	9
Queen Guest Stateroom, Port	10
Queen Guest Stateroom, Bow	11
Twin Guest Stateroom, Stbd	12
Captain & Crew Quarters, Aft	12
Crew Cabin, Aft	13
Flybridge & Bridge Deck Equipment	13
Electronics & Navigational Equipment	14
Deck Equipment	15
Aft Deck & Sport Deck	15
Electrical Equipment	16
Engine Room & Mechanical Equipment	16
Recent Upgrades	18
Exclusions	18
Исключения	18

---

Отказ от ответственности	18
ФОТОГРАФИИ	20
КОНТАКТЫ	26
Контактная информация	26
Телефоны	26
Время работы	26
Адрес	26

---

# ХАРАКТЕРИСТИКИ

## Обзор

VICTORY is an 80' Hatteras that has been consistently upgraded and immaculately maintained by knowledgeable owners since new. She features an open flybridge layout with a custom hardtop and a full EZ2CY clear enclosure which allows the bridge deck to be fully enclosed during bad weather periods or opened during nice weather. An air-conditioned bridge also provides a comfortable setting while cruising or entertaining on extremely hot days. The flybridge also features custom sunpad lounges, full wet bar, built-in propane BBQ grill, LED flat screen TV and built-in Jacuzzi. Aft on the bridge deck, behind the hardtop, is open area with outdoor upholstered seating. An overhead sail cloth awning with tension posts is installed on the aft bridge deck to allow the area to be shaded or it can be removed for sun and night sky at the owners request. The entire bridge deck is ideal for entertaining in all weather conditions and has many features only found on much larger vessels. Boarding the vessel aft from her new 8-step Marquipt boarding ladder one arrives onto the aft deck which offers alfresco dining with a large teak table, built-in settee and custom chairs. The aft deck has a solid teak sole with stairs down to swim platform and up to bridge deck and an automatic custom glass and stainless curved entry door to the main salon. Entering the main salon from the aft deck it quickly becomes apparent you are about to inspect one of the finest 80' Hatteras motor yachts ever built. Her custom joinery features a high gloss cherry wood interior with a detailed overhead wood design, entertainment center with a 50" HD TV on a lift to starboard and a custom upholstered sofa to port. Forward in the main salon is a formal dining table with seating for (6) guests, custom built-in china cabinets on the forward bulkhead, port and starboard buffet cabinets with marble tops and a custom wood soffit w/ lighting over the table. Forward of the formal dining area is a fully equipped galley with a stainless Sub-zero refrigerator/freezer, granite countertops and a center island. Forward is a dinette with L-shaped upholster seating and three sitting stools which can seat 6 to 8 guests comfortably. The galley area also features stairs up to the flybridge, a pocket door to port out to the foredeck and large windows forward providing plenty of light and an outside view.. The VICTORY accommodates (8) guests in (4) staterooms consisting of a full beam king master stateroom w/ his & her baths, (2) VIP queen staterooms and a twin stateroom all equipped with full entertainment centers and private baths all located on the lower deck. Each stateroom is well appointed with decorator comforters, pillows and pillow shams.

Powered by Caterpillar C32's engines with 1650HP, VICTORY cruises comfortably at 20 knots with a max speed of 24 knots. Additional equipment includes Onan 27.5 KW Generators, 1400 GPD watermakers, stabilizers w/Trac display, bow and stern thruster, underwater lights and full array of electronics are only a few key features this vessel offers. VICTORY is a vessel you must see when shopping the 75' to 100' motor yacht market.

## Основная информация

Тип судна: Моторная яхта

Модельный год: 2008

Год постройки: 2008

Страна: United States

Верх: Hardtop

Открытая палуба мостика: Да

## Размеры

Длина общая: 80' 0" (24.38m)

Длина по ватерлинии: 80' 0" (24.38m)

Ширина: 21' 3" (6.48m)

Макс. осадка: 5' 4" (1.63m)

Длина привального бруса: 80' 0"  
(24.38m)

## Скорость, вместимость и масса

Крейс. скорость: 21 Kts. (24 MPH)

Макс. скорость: 24 Kts. (28 MPH)

Вместимость воды: 326 Gallons

Вместимость сточного бака: 388 Gallons

Объем топливного бака: 2858 Gallons

## Размещение

Всего кают: 4

Спальные места: 8

Всего ком. состава: 5

Каюты экипажа: 2

Койки экипажа: 3

## Корпус и палуба

Материал корпуса: Fiberglass

Дизайнер корпуса: Hatteras

## Информация о двигателе

---

**Двигатели:** 2

**Производитель:** Caterpillar

**Модель:** C32

**Тип двигателя:** Inboard

**Тип топлива:** Diesel

---

# ПОДРОБНОЕ ОПИСАНИЕ

---

## Accommodations

---

VICTORY is an 80' Hatteras that has been consistently upgraded and immaculately maintained by knowledgeable owners since new. She features an open fly bridge layout with a custom hardtop and a full EZ2CY clear enclosure which allows the bridge deck to be fully enclosed during bad weather periods or opened during nice weather. An air-conditioned bridge also provides a comfortable setting while cruising or entertaining on extremely hot days. The fly bridge also features custom sunpad lounges, full wet bar, built-in propane BBQ grill, LED flat screen TV and built-in Jacuzzi. Aft on the bridge deck, behind the hardtop, is open area with outdoor upholstered seating. An overhead sail cloth awning with tension posts is installed on the aft bridge deck to allow the area to be shaded or it can be removed for sun and night sky at the owners request. The entire bridge deck is ideal for entertaining in all weather conditions and has many features only found on much larger vessels. Boarding the vessel aft from her new 8-step Marquipt boarding ladder one arrives onto the aft deck which offers alfresco dining with a large teak table, built-in settee and custom chairs. The aft deck has a solid teak sole with stairs down to swim platform and up to bridge deck and an automatic custom glass and stainless curved entry door to the main salon. Entering the main salon from the aft deck it quickly becomes apparent you are about to inspect one of the finest 80' Hatteras motor yachts ever built. Her custom joinery features a high gloss cherry wood interior with a detailed overhead wood design, entertainment center with a 50" HD TV on a lift to starboard and a custom upholstered sofa to port. Forward in the main salon is a formal dining table with seating for (6) guests, custom built-in china cabinets on the forward bulkhead, port and starboard buffet cabinets with marble tops and a custom wood soffit w/ lighting over the table. Forward of the formal dining area is a fully equipped galley with a stainless Sub-zero refrigerator/freezer, granite countertops and a center island. Forward is a dinette with L-shaped upholster seating and three sitting stools which can seat 6 to 8 guests comfortably. The galley area also features stairs up to the flybridge, a pocket door to port out to the foredeck and large windows forward providing plenty of light and an outside view. The VICTORY accommodates (8) guests in (4) staterooms consisting of a full beam king master stateroom w/ his & her baths, (2) VIP queen staterooms and a twin stateroom all equipped with full entertainment centers and private baths all located on the lower deck. Each stateroom is well appointed with decorator comforters, pillows and pillow shams.

Powered by Caterpillar C32's engines with 1650HP, VICTORY cruises comfortably at 20 knots with a max speed of 24 knots. Additional equipment includes Onan 27.5 KW Generators, 1400 GPD watermakers, stabilizers w/Trac display, bow and stern thruster, underwater lights and full array of electronics are only a few key features this vessel offers. VICTORY is a vessel you must see when shopping the 75' to 100' Motoryacht market.

---

## Main Salon & Dining

---

- Curved electric stainless steel sliding doors to aft deck

- Custom upholstered sofa
- Wood coffee table & end table
- Club chair
- Finished cherry wood bulkheads w/ high gloss finish
- Custom Carpeting
- Whisperwall headliner
- Decorative wood valance w/silhouettes in recessed pockets
- Entertainment center w/ Samsung 50" LED TV, Omni Directional antenna, Crestron remote, AM/FM surround sound stereo receiver w/ DVD/CD player & one touch RF remote control system
- Boston Acoustics 5.1 surround sound speakers
- Crestron audio, video & lighting control
- Fixed frameless windows w/ tinted safety glass
- Air conditioning dispersed through decorative valances, port & starboard
- DC low level lighting behind salon valances, port & starboard
- Decorative soffit design in headliner w/wood accents
- Smoke detector & carbon monoxide detector
- SMX digital A/C controls
- Dining Area:
- High gloss dining table w/ (6) upholstered dining chairs
- Storage cabinets, port & stbd
- (2) China cabinets w/glass doors & buffet
- Custom lofted storage for china/glass/flatware
- Mirrored soffit over dining table
- Triple decorative valances to disburse A/C
- Central vacuum system w/ 5 outlets
- SMX AC digital controls Day Head:
- Amtico vinyl strip flooring
- Plexi mirrored ceiling
- Custom wallcovering
- Vanity w/stone bullnose countertop, sidesplash & baseboards
- Decorative undermount sink & Opella faucet

---

## Galley

---

- Island w/ stone bullnosed countertops & backsplash
- Sub-Zero refrigerator w/freezer & icemaker
- Kitchen Aid 4-burner cooktop
- Whirlpool oven
- Whirlpool microwave/convection oven
- Whirlpool dishwasher
- Trash compactor
- Stainless steel sink w/garbage disposal



- Fixed frameless windows w/ tinted safety glass
- Amtico vinyl strip flooring
- Phone outlet
- Smoke detector
- Waterproof wing doors to galley, port & stbd
- Pocket sliding door to flybridge
- Audio system control, LCD keypad & Boston Acoustics speakers
- Samsung TV

## Master Stateroom

---

- King sized berth w/upholstered headboard, cedar lined storage below via AC powered pneumatic cylinders
- Whisperwall padded panel bulkheads
- Cherry wood bulkheads w/high gloss finish
- Custom carpeting
- Whisperwall headliner
- Upholstered berth base
- Decorative wood valance w/ fixed Roman shade & duettes
- HMC coil spring mattress, custom spread & pillow shams
- (2) Ventilating portlights w/ screen & (4) additional fixed portlights
- Bowed front nightstand w/ drawers
- Bowed front built-in dressers, port & starboard
- AM/FM audio access w/ local DVD/CD changer & one touch master universal remote w/RF control & Boston Acoustics loudspeakers
- All new low level rope lighting (2018)
- All new LED lighting (2018)
- Samsung 42" LED HD TV & MATV inlet
- Arched etched interior doors to head
- Arched etched doors w/ door stop to companionway
- Full length mirror
- Smoke detector, DC low level lights
- Whisperwall padded panels behind berth
- (2) Cedar lined wardrobes w/ arched doors & automatic light
- Safe in closet
- SMX HVAC compartment
- Carbon monoxide detector
- Master His & Her Bath:
  - Stone flooring
  - Whisperwall headliner
  - Custom wallcovering
  - Stone sidesplash, baseboards, bullnosed vanity top
  - (2) Decorative undermount sinks w/Jado faucets
  - Adjoining stone shower w/frameless door

- Twin storage cabinet w/mirror
- Twin wood base cabinets w/storage & bowed fronts
- Plexi-mirror around upper cabinets
- Headhunter freshwater heads
- 120v A/C freshener blower
- New A/C LED lighting (2018)
- New D/C low level rope lighting under toe kicks (2018)
- Air conditioning vent
- Holding tank full indicator light

## Queen Guest Stateroom, Port

---

- Queen sized tapered berth w/ upholstered headboard, cedar lined storage below accessed via pneumatic cylinders
- Padded bulkheads
- Custom carpeting
- Whisperwall headliner
- Fluted wood valance w/fixed Roman shade & duette w/air conditioning dispersed through soffits
- Upholstered berth base
- HMC coil spring mattress, custom spread & pillow shams
- Ventilating portlight w/ screen
- Cedar lined hanging locker w/ arched doors & automatic light
- Nightstands w/ drawers
- Full length mirror
- All new LED lighting throughout (2018)
- All new rope lighting (2018)
- Built-in dresser
- AM/FM audio access w/ DVD/CD changer & one touch master universal remote w/ RF control
- Private access to head by arched door
- 20" LED TV w/ MATC outlet
- Smoke detector
- Mirrored aft bulkhead
- Boston Acoustics loudspeakers
- Blanket lockers above berth & hullsides
- SMX HVAC compartment controlled
- Carbon monoxide detector
- Guest Head:
- Stone flooring
- Custom wallcovering
- Whisperwall headliner
- Stone bullnosed vanity countertop & backsplash

- Decorative undermount sink w/Opella faucet
- Tub w/sliding door
- Storage cabinet w/mirrored doors
- New low level rope lighting (2018)
- New LED lighting (2018)

## Queen Guest Stateroom, Bow

---

- Queen sized tapered berth w/upholstered headboard, cedar lined storage w/ drawer below, accessed via pneumatic cylinders
- HMC coil spring mattress, custom spread & pillow shams
- Upholstered berth base
- Nightstands, port & starboard
- Custom carpeting
- Whisperwall padded panels on hullside
- Whisperwall headliner
- Whisperwall padded bulkheads
- Full-length mirror
- Mirrored forward bulkhead
- Carbon monoxide detector
- Cedar lined hanging locker w/ arched door & automatic light, port & stbd
- Screened overhead hatch w/ privacy cover
- AM/FM audio access w/ DVD/CD changer & one touch master universal remote w/ RF control
- All new LED lighting throughout (2018)
- New rope lighting under toe kicks (2018)
- Access to port guest head
- 20" LED TV w/ MATV outlet
- Overhead storage cabinets, port & stbd
- Smoke detector
- DC low level lights under berth
- Steps to bow stateroom w/ new DC low level lights (2018)
- Phone outlet
- Arched etched passage door
- Polk stereo speakers
- Fluted wood valance w/ air conditioning
- SMX HVAC compartment controlled
- Guest Head, Shared for Starboard & Bow Stateroom:
- Vinyl wallcovering
- Stone flooring
- Whisperwall headliner
- Stall shower w/glass door
- Stone bullnosed vanity top, backsplash & sidesplash
- Decorative undermount sink & Opella faucet

- New LED lighting (2018)

---

## **Twin Guest Stateroom, Stbd**

---

- Twin crisscross berths
- Polyfoam mattresses, custom spread & pillow shams
- Upholstered berth base
- Built-in dresser w/drawers
- Nightstand w/ drawer
- Cedar-lined hanging locker w/ automatic light
- Full length mirror
- Audio system control, LCD keypad & Boston Acoustics speakers
- AC & DC light fixtures
- AC dimmable lights, AC duplex outlets
- Private access to head
- Smoke detector
- Carbon monoxide detector
- Etched door to stateroom
- DC low level lights under berth
- Phone outlet
- SMX HVAC compartment controlled

---

## **Captain & Crew Quarters, Aft**

---

- Captain's cabin w/Queen berth, starboard side w/ upholstered base
- New Amtico flooring throughout (2018)
- Padded vinyl covering on hullside
- Vinyl headliner
- Polyfoam mattress, spread & pillow shams
- Cedar lined hanging locker w/ doors & automatic light
- Full length mirror
- New LED HD 24" TV
- AM/FM audio access w/ DVD/CD changer & one touch master universal remote w/ RF control
- Boston Acoustics loudspeakers
- Phone outlets, port & stbd
- AC / DC light fixtures, AC duplex outlets
- Curved stairwell from aft deck
- Watertight door from swim platform
- SMX HVAC compartment controlled
- Carbon monoxide detector
- Ice chipper in crew quarters/engine room

- Full size stackable washer & dryer Crew Cabin:
- Over/under berths fold-up for storage
- LED TV
- Chest freezer
- (2) Storage lockers
- (3) Drawers w/ lock
- New Amtico flooring (2018) Crew Head:
- Azrock Milano tile flooring
- Vinyl wallcovering
- Vinyl headliner
- Solid surface countertop w/ integral sink & storage cabinet
- Mirror
- Stall shower w/ door
- Headhunter freshwater head
- Recirculating fan
- AC /DC light fixtures, AC duplex outlet
- Holding tank 3/4 full indicator light

---

## Crew Cabin, Aft

---

- Over/under berths fold-up for storage
- LED TV
- Chest freezer
- (2) Storage lockers
- (3) Drawers w/ lock

---

## Flybridge & Bridge Deck Equipment

---

- Custom hardtop w/ removable EZ2CY 4-sided clear enclosure
- Custom sunshades, port & stbd
- Flybridge A/C & heating available when enclosed
- (2) Reupholstered leather helm chairs ('17) w/new canvas covers ('18)
- Compass w/ dimmable light
- Single lever clutch & throttle controls
- Hydraulic power assisted steering
- 36" LED HD TV w/ remote ('18)
- Synthetic teak decks ('17)
- Storage under control console w/ DC lighting
- Polished stainless steel grab rails
- Framed glass windshield
- Painted radar arch w/mast, dual platform, anchor light & (3) LED down lights ('18)
- (2) LED lights for mast & deck ('18)

- Bridge deck seating
- Cushions w/new upholstery
- Stairs & sliding door from flybridge
- Wet bar w/ sink, Scotsman refrigerator, Scotsman icemaker ('16) & (3) barstools
- New DCS stainless steel propane grill w/custom cabinet for (2) tanks ('18)
- Solid surface table w/ stainless steel pedestal
- Molded in stairs to aft deck w/ hatch
- Freshwater wash down w/ Hatteras quick disconnect
- Neutral interlock switches allowing engine to start in neutral only
- Built-in deck Jacuzzi w/ new padded cover ('18)
- Bench seating w/cushions & custom storage below
- Marquipt 1500lb davit
- Audio system control
- Computer controlled ethernet monitoring system w/ LCD touch screen display providing visual & audible signals for engines, gears, generators, high bilge water, fire warning in engine compartment, fire extinguisher discharge in engine compartment, AC power loss, smoke detectors, all tank level indication, low battery voltage, alternator failure, battery charger failure, bilge pump control, run indication and holding tank pump control
- Deck aft w/new non-skid paint ('18)
- Outdoor wicker sectional w/ 2 tables & area carpet ('18)
- Custom sunshade w/ (2) stainless steel support poles that connect to radar arch

## Electronics & Navigational Equipment

- Furuno 96mile Radar w/ 6' open array antenna
- Furuno GPS GP330B
- Furuno MFDBB Nav 3D Plotter
- Furuno PB200
- Furuno RD33 Depth/Data
- Furuno Digital DFF1 Sounder
- Garmin GPS Map Plotter 5208
- (2) Sunlight GB 17" displays, one w/ touchscreens
- Bow & stern thrusters
- Stabilizers w/Trac display ('14)
- Furuno Navnet VX2 Sirius Sat weather
- Newmar PA 30/20 Hailer
- New hailing horn custom painted gray ('18)
- Raymarine CAM100 reverse image day/night camera
- Elbex EXC 17/4 Unbreakable color ball camera
- ACR Globalfix 406 EPIRB CAT I
- Icom 162B Command MIC3
- Nobeltec software
- Onkyo iPod dock station

- Ray CCTV cameras
- KVH HD-7 Tracvision ('17)
- KVH V-SAT
- KVH Tracphon V7 ('17)
- Computer KEP KMPC
- Nobeltec chart software
- Icom VHF ICM604
- Load Hailer ICM604
- WIFI Geosat Wave Rouge ('18)
- Satellite Sirius XM radio ('18)
- (4) GLA receivers
- Remote Searchlight
- LED lighting for mast & dome ('18)

## Deck Equipment

---

- Windlass 4000lb hydraulic w/300' galvanized chain w/deck mounted control switches
- Marquipt 1500lb davit, fully hydraulic w/ 126" boom
- Marquipt 8-step tide sea stairs w/ storage brackets & custom extension platform ('18)
- Boarding gates, port & starboard side decks
- Swim platform w/ polished stainless steel ladder
- Polished stainless steel anchor chute & roller
- Plow 110lb anchor, anchor line & deck hawse pipe
- (2) Remote controlled search lights
- New non-skid paint on stairs, bridge deck aft ('17)
- Fog bell
- Dual air horns
- (6) Polished stainless steel springline cleats
- Bow & stern polished stainless steel cleats
- Bow & stern staffs w/ pennant
- Freshwater washdown forward deck w/ Hatteras quick disconnect
- (4) Black fenders
- (2) Pop-up cleats on swim platform
- Fender tracks
- Rope locker storage hatch in bow deck
- Deep storage, port & stbd, bow trunk
- Pacific Coast watertight door to crew quarters from sport deck
- Wireless remote control for cablemaster
- New upholstered cushions & canvas covers ('18)
- Custom sunshades, port, stbd & aft ('18)

## Aft Deck & Sport Deck

---

- Built-in bench seating w/new upholstered cushions & canvas cover ('18)
- Teak dining table w/stainless steel pedestals & (3) teak dining chairs
- Sink w/icemaker, stbd side
- Fold-down Nav station, portside
- Samsung 20" fold down LED HD TV
- Crestron waterproof remote for audio/video control
- Teak decks
- Freshwater washdown
- Audio system control, LCD keypad & (2) Pioneer waterproof speakers
- LED lighting in hardtop ('18)
- Custom sunshades, port/stbd & aft
- Dual molded fiberglass steps to flybridge deck w/stainless handrails, port & stbd
- Dual molded steps w/ synthetic teak treads down sport deck
- Sportdeck w/ synthetic teak & removable stainless steel hoop guard rails
- Freshwater washdown
- Hand-held hot/cold shower w/cover
- (2) Sets of storage brackets (2018)
- Pop-up cleats
- Centerline boarding ladder
- Pacific Coast watertight door to crews quarters & engine room

---

## Electrical Equipment

---

- (2) Onan 27.5 KW Generators, Electronic Quiet Diesel, w/shock mounts, sound enclosure, remote start, seawater strainer, fuel/water separator, hour meter & water lift muffler
- (4) Underwater lights, aft w/auto timer ('18)
- (3) Water heaters; 30-gallon, 20-gallon midship & 6-gallon aft for crew
- (2) 24v banks of heavy duty 12v marine batteries
- Gel/lead acid compatible 240v automatic programmable battery charger
- Automatic battery paralleling system w/ switch at control console
- (2) 100 amp transformers connected retractable shore cords w/wireless remote for cablemaster
- Navigation lights
- Ground fault protection on AC receptacles & lighting circuits
- SSB radio ground screen laminated in cabin top
- Phone/CATV inlets
- Omni directional TV antenna
- Towing lights for tender

---

## Engine Room & Mechanical Equipment

---

- Twin Caterpillar C32 engines, 1650HP ea w/ electrically controlled marine gears, neutral



interlocks, exhaust silencers, engine hour meters, alternators, fuel filters & seawater strainers

- New aft coolers & 1000 hour engine service ('17)
- New Caterpillar manual gauges ('17)
- Chilled water air conditioning w/ reverse cycle heating & soft starting 4-ton A/C compressors automatically staged & individually controlled w/ SMX controls in each compartment
- New A/C frequency drive ('18)
- New Zero Spot 2800 GPD watermaker ('18)
- Hydraulic bow and stern thrusters
- Water manifold blocks w/ centralized shut off valve for sinks & showers fiberglass rudder shelf w/
  - stainless steel rudder tie bar
  - DC Exhaust blower
  - FM200 fixed fire extinguishing system for engine/generator compartment w/automatic & remote manual controls
  - (2) AC ventilation fans
  - Variable speed air induction fans w/ duct to flybridge for engine combustion air
  - (2) 21" vane-axial fan pressure & temperature controlled
  - Electric fuel transfer system w/ filtration & dry tank protection for pump
  - Freshwater fill hose for engines & generator
  - AC compressed air system w/ air line & regulator
  - Nibral high performance 7-bladed props
  - Stainless steel rudders
  - Zincs on rudders & shafts
  - Alloy 222 high strength propeller shafts
  - Manganese bronze dripless 4" shaft & rudder seals
  - (13) Fire extinguishers portable "drychem"
  - Fire system recertified '17
  - Stainless steel trim tabs
  - Engine & generator exhaust exits thru hull side near transom
  - Generator exhaust, water separator
  - Holding tank w/ sewage pump & overboard discharge
  - Dockside water inlets w/ pressure regulating valve, automatic dockside tank fill & Hatteras quick disconnect
  - 24v DC bilge & sump pumps, w/ heavy duty float switches & protective guards
  - Bronze/chrome ball valves through bolted in fiberglass on all underwater thru hull fittings w/ electrical bonding throughout
  - 230v AC freshwater pump w/ pressure tanks & central charcoal filter w/ back-flush capabilities
  - 110v AC oil changing system for engine, generators & gears w/ Hatteras patented quick disconnect
  - Duplex fuel filters/water separators w/ bypass manifold & engines
  - Electric fuel priming pumps 24v DC engines

- (5) Discharge sea chests
- Pick up sea chests
- Eskimo ice chipper & storage chest (serviced '17)
- New freezer ('18)
- Work bench

## Recent Upgrades

---

- Sealed & caulked all exterior windows ('19)
- New EZ2CY removable enclosure & sunshades ('18)
- New paint flybridge up, arch, domes ('18)
- New bottom paint ('18)
- New dripless shaft seals ('18)
- New stainless steel DCS stainless propane grill on flybridge ('18)
- Outdoor wicker settee, tables & area carpet aft bridge deck ('18)
- New pilothouse & side window covers ('18)
- New upholstered exterior cushions & canvas covers ('17)
- Stabilizer seals ('16)
- Balanced props ('16)
- Stabilizer Trac display ('16)
- Removed bar in salon & re-fabricated all cabinets, panels, veneers, etc.
- Fabricated new flybridge cabinets for upgraded refrigerator & icemaker
- Fabricated sun lounge starboard side of bridge Jacuzzi w/ electronic hatch for storage, sunpads to be same level of Jacuzzi sunpads
- Added hinged shelf behind salon sofa for hidden storage
- Upgraded sound system & TV's

## Exclusions

---

- All owner's personal items
- Marquipt 4-step vertical ladder
- Lighted nameboards
- All tools & tool boxes
- Crystal stemware and fine china

## Исключения

---

При продаже яхты исключаются личные вещи владельца.

## Отказ от ответственности

---

Компания предоставляет описание судна или яхты добросовестно, но не может гарантировать точность этой информации, а также не ручается за техническое состояние. Покупатель должен проинструктировать своих агентов или оценщиков исследовать представленную информацию более подробно, по собственному желанию. Продажа судна или яхты, изменение цены или снятие с продажи будет происходить без предварительного уведомления.

# ФОТОГРАФИИ







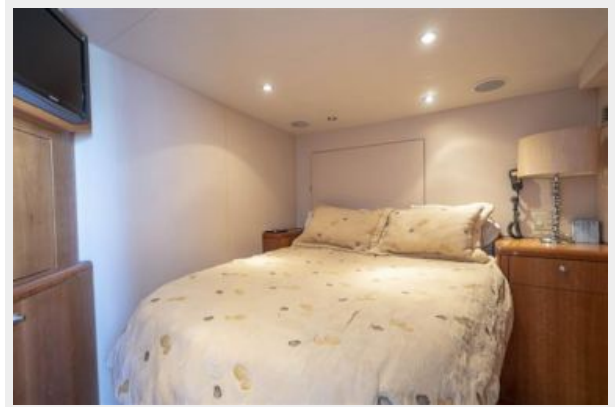












# КОНТАКТЫ

---

Андрей Шестаков (Andrey Shestakov) – ведущий яхтенный брокер отдела продаж яхт и судов компании Shestakov Yacht Sales Inc. Официальный представитель Shestakov Yacht Sales Inc. для русскоговорящих клиентов в центральном офисе компании в Майами/Форт Лодердейл/Флорида/США.

## Контактная информация

---

Email: [andrey@shestakovyachtsales.com](mailto:andrey@shestakovyachtsales.com)

Web: [shestakovyachtsales.com](http://shestakovyachtsales.com)

## Телефоны

---

Краснодарский край: **+7(918)465-66-44**

США, Майами, Флорида: **+1(954)274-4435**

## Время работы

---

Понедельник – Суббота: **9:00 - 21:00**  
EDT

Воскресенье: **Закрето**

## Адрес

---



Harbour Towne Marina, 850 NE 3rd St,  
STE 213, Dania, FL 33004