

THINK GOOD THOUGHTS — VOYAGE YACHTS



Судостроитель: VOYAGE YACHTS

Год постройки: 2000

Модель: Катамаран

Цена: ЦЕНА ЯХТЫ ПО ЗАПРОСУ

Местонахождение: United States

Длина общая: 50' 0" (15.24m)

Ширина: 28' 8" (8.74m)

Мин. осадка: 4' 4" (1.32m)

Крейс. скорость: 8 Kts. (9 MPH)

Макс. скорость: 9 Kts. (10 MPH)

Купить **Think Good Thoughts — VOYAGE YACHTS** а также выбрать подходящую вам яхту из нашего каталога яхт вам поможет опытный яхтенный брокер Андрей Шестаков. На сегодняшний день компания **Shestakov Yacht Sales Inc.** имеет большое количество яхт в собственном списке продаж, а также тесно сотрудничает со всеми крупными яхтенными производителями по всему миру. Для того чтобы купить яхту **Think Good Thoughts — VOYAGE YACHTS** а также проконсультироваться по любому вопросу связанному с покупкой, продажей, чартером яхт позвоните по телефону **+7(918)465-66-44**.

ОГЛАВЛЕНИЕ

ОГЛАВЛЕНИЕ	2
ХАРАКТЕРИСТИКИ	3
Обзор	3
Основная информация	3
Размеры	4
Скорость, вместимость и масса	4
Размещение	4
Корпус и палуба	4
Информация о двигателе	4
ПОДРОБНОЕ ОПИСАНИЕ	5
Accommodations	5
Hull and Deck	7
Sails and Rigging	10
Electronics and Navigation	11
Electrical	12
Mechanical and Plumbing Systems	13
Safety and Extra Gear	14
Dinghy and Outboard	15
Исключения	15
Отказ от ответственности	15
ФОТОГРАФИИ	16
КОНТАКТЫ	20
Контактная информация	20
Телефоны	20
Время работы	20
Адрес	20

ХАРАКТЕРИСТИКИ

Обзор

Think Good Thoughts is a luxury, blue water cruising catamaran. With four en-suite queen cabins, the Voyage 500 Mayotte is a perfect platform for private family cruising or charter use. All Mayotte Cats are widely acknowledged for their quality, performance, safety, low maintenance and ease of handling. TGT has been upgraded in every way during this present ownership. The owner's idea was to outfit the cat for living and sailing "**off the grid**" with ample solar and wind power to replenish battery power. With 3 Sunpower solar panels that produce up to 350 amp hours in a day and with a wind turbine, the owner's were anchored in the Caribbean for 10 consecutive days without turning on a generator! She is also equipped with twin Westerbeke 7.6 kw generators that originally came with the boat.

Propulsion is supplied by twin Yanmar 56 hp diesel engines.

New Mack sails were added in 2014 and a Screecher in 2015.

The electronics were upgraded as well with Garmin 7212 at the helm, Garmin 6208 at the nav station, AIS, Garmin radar, (2) Raymarine multi-function i70 displays for wind, depth and speed, autopilot, and helm VHF radio. While in the yard, the hulls were peeled and reinforced with 6 layers of glass.

You and your guests will arrive fast and dry in **Whim**, TGT's 14 ft center console dinghy with a 50hp, 2-stroke Yamaha engine.

For a complete list of upgrades and replacements, please refer to the full details in the listing. It is detailed and extensive.

TGT is presently in Panama but will **arrive in Ft Lauderdale in mid-May 2018.**

DYID:3204060

Основная информация

Тип судна: Катамаран

Модельный год: 2000

Год постройки: 2000

Страна: United States

Размеры

Длина общая: 50' 0" (15.24m)

Ширина: 28' 8" (8.74m)

Мин. осадка: 4' 4" (1.32m)

Трапы: 73' 0" (22.25m)

Скорость, вместимость и масса

Крейс. скорость: 8 Kts. (9 MPH)

Макс. скорость: 9 Kts. (10 MPH)

Водоизмещение: 33000 Pounds

Вместимость воды: 210 Gallons

Вместимость сточного бака: 20 Gallons

Объем топливного бака: 106 Gallons

Размещение

Всего кают: 4

Всего коек: 4

Всего ком. состава: 4

Корпус и палуба

Материал корпуса: Fiberglass

Информация о двигателе

Двигатели: 2

Производитель: Yanmar

Модель: 4JH3CE

Тип двигателя: Inboard

Тип топлива: Diesel

ПОДРОБНОЕ ОПИСАНИЕ

Accommodations

The contemporary interior accommodation plan and design are perfect for cruising couples with guests or a family to sail the world. She has a popular “galley up” arrangement with a comfortable salon and cockpit. The galley is a chef’s dream. Open spaces are balanced with storage lockers to meet the needs of long distance voyages and life aboard. Think Good Thoughts has four staterooms with en-suite heads. Each hull has a forward and aft double cabin. All cabins have en-suite heads and hot and cold showers. The aft cabins in each hull have an electric converted toilet. There is a sink, vanity, and toilet along with storage areas for personal items. There is also a 12v fan, reading lights, opening hatch and stereo. The common area, salon/galley/nav station, sits atop the hulls and is light-filled and inviting. The boat is also fully air-conditioned for comfort and humidity control. She has a Bosch washer and dryer in the port hull.

Décor and design elements are tasteful. The cabin sole is a gray speckled synthetic; wear resistant and with good non-slip properties. Shelves, countertops and tables are fitted with wood trim. There is textured gel coat on the bulkheads and overhead. **New in 2018**, gray, soft vinyl upholstery is used for the salon cushions, 4 bar stools, and 3 chair/stools. This décor is carried through to the staterooms “headboards” and storage benches.

Fit out and interior hardware is well conceived. Many of the cabinet doors positively close with pop-out pushbutton latches. Hinges are euro-styled for full adjustment. Overhead lights are flush mounted and wall switched at space entrances. Task lights are found where needed in the galley, heads, and cabins. Reading lights are fitted at each berth. 12V and 110V outlets are strategically located throughout the interior. Toe kicks are found below the counters and other furniture. Overhead hatches are fitted with insect screens and roller shades in the 4 cabins. Bunks are fitted with mattresses and 2” gel foam comfort and mattress protection. Bilge access panels in the cabin sole lift with flush mounted stainless pulls

A key design element of Think Good Thoughts is a **large and open entrance** from the cockpit to the salon. Double, heavy-duty glass door slides to one side, opening the interior to the cockpit. The sliding glass door locks for securing and also locks in intermediate positions. One can cook and clean dishes, with a view forward from the large windows and within easy reach of the sheet, winches or helm.

The **salon** area is forward and to starboard. An L-shaped dinette faces aft. Storage cabinets are located behind of the seat backs while storage bins are located below the settee sections. Three small chairs/stools allow one to sit at the dining table and face forward. The Corian like material with a wood trim on the salon table makes dining and clean-up a breeze. The chart table faces aft and is directly across from the settee, the large table with chart plotter and system controls makes it a great place to chart your next course. There is a deep freezer and bottle storage to port of the salon table and behind the settee are large bookshelves and cabinets with sliding doors for storage.

The **up-galley** is large and perfectly designed for the yachting chef. The U-shape design is easy to work in, with the double stainless-steel sinks and extra basin for dish drying facing forward, a large counter work surface with a microwave and toaster and an Adler Barbour deep freezer port of the large breakfast bar. Guests often gather at the “bar” which has 4 tall bar stools covered in soft gray vinyl fabric. The countertop is gray- flecked Corian and fiddled for stowage in various strategic areas. A 4-burner stainless steel gas cooktop with pot clamps sits in the port side countertop. The large gas oven inhabits the under counter space between the stove and sink. A small round Corian cover drops small items directly into the trash bin. Above the galley counters are storage compartments with sliding doors. A pot/pan storage cabinet is beneath the sinks. Cabinets with built-in shelves stow galley ware and food. The front opening fridge is outboard to port and is cooled with a Frigo Boat Keel cooler. There is an additional top-load Frigo Boat Keel cooled freezer with digital Climate Controls.

In an ideal location, out of the way, with just a few steps from the cockpit is the aft facing **navigation station**. This desk serves equally well as an in port office. The navigation console and chart table is “command central” for navigation, electrical system control/monitoring and communications. The solid wood chart table has a hinged top nav tool drawer. The Garmin 6208 chartplotter which slaves off the helm chartplotter, SSB radio and custom emergency panel is immediately above the nav table. The 12v/120v power distribution panel as well as port and starboard generator controls are easily accessed at the nav station. A cabinet with sliding doors for handheld VHF’s, flashlights and power cords is immediately above the desk. A stereo is also mounted here

Along the **port hull** is a Bosch washer and dryer with is on its own 220v circuit. In addition, there are large overhead storage areas and 2 cabinets storing the 50-amp shore power cord and spare parts while the other cabinet is used for storing beverages.

Along the **starboard hull** are 3 very large cabinets with pop-out push button latches. One is used for a fantastic pantry and the other two stow tools and spares. Stainless steel outboard grab rails also serve as additional hanging space.

There is a queen-size bed in each of the 4 staterooms with clothes storage on either side of the 3 steps up to the bunk. In addition, each cabin has a storage bench with upholstered seat and a hanging closet and full-length mirror behind each door. All 4 cabins have individual air conditioners, with the aft cabins vented into the salon as well.

- LED overhead lights with dimmer in galley and salon
- Flush mounted lights in cabins, hallways, and heads
- (2) reading lights in each cabin
- Stainless steel 4 burner LPG stovetop with safety rail and pot holders
- Large LPG oven
- Frigo Boat front opening water-cooled refrigerator with digital climate controller (2014)

- Frigo Boat top opening water cooled freezer with digital climate controller **(2014)**
- Adler Barbour top opening air cooled freezer

U-line icemaker

Microwave oven

Breville toaster oven

Galleyware

(3) 110v GFI outlets in galley

(2) Stainless steel round galley sinks fitted with Corian covers

Oceanaire blinds on accommodation space overhead hatches

Opening portlights in each bathroom, cabin and one in each hallway

Hull and Deck

Think Good Thoughts has a white gel coat hull with white deck and superstructure. White is the easiest color to maintain, especially in the tropics and it reflects most of the sun's energy to minimize heating of the interior on sunny/hot days and stay cool underfoot. A robust, full boat length rub rail is just below the deck edge on each hull side for protection. The bottom is painted with blue Seahawk, Islands 44 antifouling paint. There are five opening screened portlights on each outboard hull side as well as a small opening port in the aft cabins. Rectangular, clear escape hatches with teak covers are in the galley and the floors.

Each hull has large, water level stern decks with swim ladders and each with wide access stairs and showers; great fishing platforms. Amidships boarding gates on each side allow side boarding when the stern is inaccessible, or come aboard on the rear teak deck. Large Lewmar deck hatches on the last step up, access the engine rooms. Stainless steel stern push pits, stanchions, and stainless steel double lifelines will keep crew securely on deck. "Dolphin watching" seats are forward on each bow. Deck and cabin top has non-skid coating and easy to brush clean. Wide, uncluttered side decks allow easy passage forward where two large trampolines on each side of the centerline gangway confirm the performance mission of this design. The anchor roller is mounted forward in the centerline gangway and the controls and windlass are stowed in a compartment with a fresh water hose bib all under a Lewmar hatch. A secondary anchor roller is mounted atop the forward crossbeam.

Deck accessible storage is very important on any cruising yacht and on Think Good Thoughts there is no shortage. The 5th cabin was converted into two large "climb into" lockers forward of the mast that are accessed through 24" by 24" Lewmar deck hatches. Ample sails,

lines, fenders, fuel cans, secondary ground tackle and gear storage are found in this locker. This locker can be converted to a 5th/crew cabin with an addition of mattresses. Forward on each hull is another locker, port LPG and shop vac storage and starboard is the garbage locker during offshore passages.

One of the key features of any cruising catamaran is the cockpit. Cockpit access is from all sides: the side decks with one step, beneath cutouts in the rigid bimini, aft by the teak platform and from the salon. The custom 2-person helmsman seat with underneath storage is a comfortable place to take in the view under sail, with operable windshield and zippered roof. Families with small children will appreciate the deep, fully encircled cockpit's security. The Voyage 500 has ample seating for a baker's dozen if hosting a party or group sail. Hinged-top lazarettes are beneath the cockpit seats; excellent locations for snorkel/dive gear, fishing gear and cleaning supplies. Additionally, there are 4 large lockers in the cockpit sole and a large outboard locker containing an 8-man Revere life raft. A large, white cockpit table can easily seat 10 for dinner with a couple of stools from the salon. The fixed bimini protects the cockpit from sun and rain with zippered cockpit access covers and isinglass windshields to protect from wind and rain. There are also roll down Phifertex sunshades for the rear of the cockpit

- 2 1/2" robust impact absorbing rub rail
- Bottom painted with SeaHawk Island 44 Paint in Blue (**December 2017**)
- Stainless steel grab rails outboard on transoms
- Stainless steel grab rails on cabin top; each side
- 26" tall stainless steel stanchions with stainless steel double lifelines and amidships boarding gates
- Composite "dolphin watching" seats with cup holders on each bow
- Knitted White Polyamide 13mm square trampolines for super comfortable lounging (**January 2018**)
- Teak walkway between trampolines
- Stainless steel swim ladder in each transom receptacle.
- (8) 10" Long aluminum mooring cleats
- (2) 12.5" Long aluminum mooring cleats on the crossbar
- Lofrans Tigres anchor windlass with 12V, 1200 W motor. (March 2018) (rebuilt Spare Motor on board)
- Delta 88 lb primary anchor with 300 feet of 3/8 galvanized chain rode
- Anchor bridle with chaffe covers fitted to massive padeyes at the waterline forward on each

hull

- Fortress F37 Secondary Anchor with 75 ft. 3/8" galvanized chain and swivel and 225 ft. of line rode **(2014)**
- Extra anchor roller on forward crossbeam
- Custom detachable dinghy cradle on teak dive platform at stern
- Telescopic boom derrick for lifting dinghy on and off the boat
- Lewmar Ocean series hatches and ports
- Stern Boom light
- 2 underwater lights **(2014)**
- (3) LED dome lights over cockpit table in rigid bimini
- Numerous handholds alongside decks and cockpit
- Hatch and portlight screens and covers
- Magma Propane BBQ mounted port aft
- Fishing/Flag pole mounts on transoms
- (2) Horseshoe throwing rings
- MOB Pole
- Custom 2 person helmsman seat with storage under seat
- Cockpit cushions
- Steering wheel with twin engine controls
- Stereo speakers
- Hard Bimini
- 50' 50 AMP shore power cord and various adapters and cords
- Fenders and dock lines
- Cockpit stereo speakers
- Doyle made sunshades, dodger, helm cover, line bags and front window shade screens **(2015)**

Sails and Rigging

Cruisers will appreciate the rigging and sail handling details of this Voyage 500. An emphasis on shorthanded sailing and performance is achieved with mainsail halyard, reef lines, jib sheets and mainsheet are led aft to powered winches in the cockpit. Traveler control lines are well positioned aft of the helm seat. Screecher sheets, jib-furling line, are led aft. The mast and boom are anodized aluminum and the mast has aluminum steps to the top of the mast.

Think Good Thoughts sail inventory is sufficient for heavy and light wind world cruising. New in 2018 Doyle, Lazy jacks and mainsail stack pack catch the mainsail when lowered or reefed. A wide traveler and 4:1 mainsheet controls mainsail trim. In late 2014, Mack Sails fabricated a Dacron miter cut jib that furls on a Lewmar roller furler on the forestay. It is hoisted on a 2:1 halyard with the continuous loop ProFurl furler. The custom four foot Bowsprit with SS wire downrigger and carbon fiber reinforced attachment points added in late 2014 to accommodate a DOYLE Sails 1162 ft2 Screecher which is a way to pile on sail area and power reaching or sailing downwind in up to 15 knots of breeze. There is also a rarely used spinnaker that can be hoisted and roller furler on the bowsprit.

- Aluminum alloy triple spreader mast and boom
- 1 x 19 wire rigging
- Rigging continuously checked and is crack free
- Running Back Stays for added mast support
- **(replaced July 2014)**
- Isolated SSB antennae on starboard lower shroud
- MACK Sails 11.77 oz Marblehead Dacron MAIN SAIL with full leech 2 ply, aluminum adjustable battslides fittings, UHMW wear strips and 3 rows of reefs **(Nov 2014)**
- MACK Sails 9.77 oz Marblehead Dacron miter cut jib with Sunbrella cover and luff foam **(Nov 2014)**
- DOYLE Sails Screecher, 1162 ft2, Challenge 3.8 oz Dacron with White Weathermax Lite Sunshield, Vectran Luff Line and Colligo Halyard Swivel **(2015)**
- Asymmetric Spinnaker in a bag
- DOYLE Sails Cradle Cover, Ocean Blue Sunbrella color, fully lined with heavy Dacron, #15 YKK zipper, sewn with Gore-Tex Tenara thread, which is guaranteed for the life of the fabric against UV degradation **(2018)**
- (2) Andersen 52ST two speed winches in cockpit
- (2) Andersen 52ST two speed electric winches on cabin top

- Harken Mainsail Bat Car System
- (1) New England Ropes 12mm Sta-Set double braid Main halyard **(2018)**
- (1) Spare Main halyard
- (3) Mainsail reefs, reefing lines led aft to cockpit
- Profurl roller furler for jib
- Bamar EVO Rollgen furling system for the screecher **(2015)**
- Wire jib halyard
- 2:1 Spinnaker halyard, 7/16" New England Ropes Type II line **(2015)**
- (2) plastic winch handle holders in cockpit at the traveler
- Masthead Windex wind direction indicator
- Folding aluminum mast steps to top of mast
- Topping lift, jib, screecher sheets and 2nd spinnaker halyard equipment

Electronics and Navigation

- Garmin 7212 touchscreen radar/chartplotter with AIS at helm **(2014)**
- Garmin 6208 radar/ chartplotter inside at chart table **(2014)**
- Electronic charts for east coast of USA, Bahamas, East and West Caribbean
- Garmin 18HD, 36 mile, 4KW radome on mast**(2014)**
- Em-Trak Class B AIS transceiver **(2014)**
- (2) Raymarine i70 color graphic displays at helm **(Nov 2015)**
- Raymarine Evolution ACU-200 Autopilot **(Nov 2015)**
- Raymarine P70 color autopilot graphic controller at helm **(Nov 2015)**
- Raymarine vane and anemometer **(2014)**
- Ritchie deck mounted compass at helm **(2017)**
- Raymarine 60 DSC VHF at Helm **(Nov 2015)**

- Seth Thomas barometer and clock at chart table
- ICOM IC-M710 SSB radio with ICOM AT-130 Tuner
- (1) Icom handheld VHF radio
- Masthead tricolor light
- LED navigation lights
- LED red/white/blue Lumitec dimmable dome lights in cockpit (2018) with 2 spares
- Clarion MC03 Bluetooth, CD, Aux, stereo receiver
- (2) speakers in salon (2) speakers in cockpit
- Samsung Flat Screen SmartTV and antenna booster
- Wirie Pro Marine long range wifi and cellular antennae **(2015)**

Electrical

Think Good Thoughts is equipped for living and sailing “off the grid” with ample solar and wind power to minimize or eliminate burning fossil fuels to replenish battery power. With 1035 watts configured in 3 Sunpower panels mounted on the cabin top, you can take advantage of the sun’s energy while a wind generator will produce serious power in the Caribbean trade winds for 24 hours every day. Engine alternators efficiently charge batteries while motoring. And, for high usage and redundancy, Think Good Thoughts has (2) Westerbeke, 7.6 kw generators.

An Outback 2800W 12Vdc 125A Inverter/Charger will keep your batteries charged to sail off the grid.

- (8) Lifeline GPL 220 ah 6V gel house batteries, 880 amp house battery bank **(2016)**
- (2) Deka batteries 12V Group 27 engine start batteries with crossover switch
- (2) Hitachi 55 amp alternators
- (2) Balmar Digital Duo Charge Controllers **(Dec 2015)**
- (2) Balmar Max Charge MC-614 Multi-Stage Voltage regulators for alternators **(Dec 2015)**
- (3) 345 watt Sunpower solar panels (1035 Watts) on cabin top with 80A Outback FLEX FM80-150MPPT Solar Charge controller **(2014)**
- D400 wind generator on dedicated port transom stern pole
- Outback Power Systems charge controller and breaking switch at chart table for wind

generator (2014)

- Outback Power Systems 12V 2800 watt AC 60 cycle inverter-charger with HUB Communications Manager, FLEXnet DC and digital Mate at the chart table to monitor solar, AC, and DC (2014)
- (2) 7.6 kw Westerbeke generators with sound shields and remote starters at chart table
- AC and DC electrical panels
- 12V and 110V outlets throughout interior
- 12 V dimmer switches in galley and salon
- LED interior and navigation lights
- DC and AC analog voltmeter at chart table
- (3) 12V DC outlets: chart table, galley and helm
- Custom Alarm System with Port and Starboard bilge pumps and high water alarms and overheating alarms on engines and generators

Mechanical and Plumbing Systems

Think Good Thoughts has enough blue water cruising systems to provide the level of comfort and safety most experienced sailors desire without being overly complicated. Access to machinery is excellent with dedicated engine rooms in each stern accessed through Lewmar deck hatches. Adequate standing space aft of each engine allows one to easily work on the engines, steering gear, generators, water maker and accessories.

- Twin 56 HP Yanmar diesel engines with saildrives
- All new fuel lines on both engines (2018)
- Rebuilt Injection Pumps on both engines (2018)
- Sail drives serviced, new diaphragms (2015)
- Starter with batteries, and a Spare re-built starter on board (2014)
- Replaced engine mounts, saildrives mounts, heat exchangers and elbows (August 2014)
- (2) Max Prop three-blade, 17" geared folding propellers
- (1) 125 gallon fuel tank
- (4) Racor 500FG fuel filters and pump.

- Morse engine controls at steering wheel
- (4) Stainless water tanks
- Hart Systems Tank Tender for diesel and water tanks **(replaced 2016)**
- (2) Jabsco Electric Toilet Conversion heads
- (2) Manual Jabsco heads
- (2) 20 gallon holding tanks with pumpout in each hull and overboard valves in each head
- (2) 12V Westmarine water pressure pumps with Sureflo pressure accumulator tanks
- (4) 12V electric bilge pumps
- (2) Manual bilge pumps
- Village Marine 25 gallons per hour water maker with a new March Booster Pump **(2018)**
- Hot/cold freshwater bathing shower on each transom
- (2) Isotemp stainless steel water heaters with new elements **(2018)**
- (2) LPG 17 pound fiberglass tanks and dedicated bottle locker

Safety and Extra Gear

- ACR Epirb Pro 406 with GPS **(2014)**
- Revere Offshore 8 person liferaft (Needs recertification)
- Ditch bag
- Radar reflector
- Tricolor, strobe, steaming lights, spreader lights, anchor light and LED running lights
- (2) Horseshoe life rings and holders
- (2) 50' jack lines
- Flares
- Bosun's chair
- Extensive tools and spare parts
- Flags

Dinghy and Outboard

- 14.6' Carib RIB Dinghy with 2 fuel tanks, anchor and custom cover
- 50 hp Yamaha outboard (**replaced steering ram 2018**)

Исключения

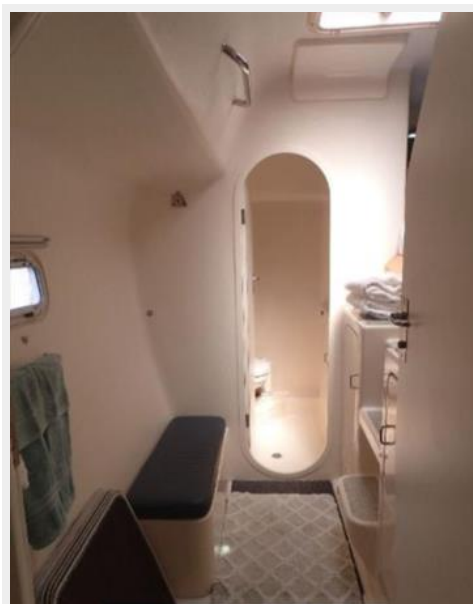
При продаже яхты исключаются личные вещи владельца.

Отказ от ответственности

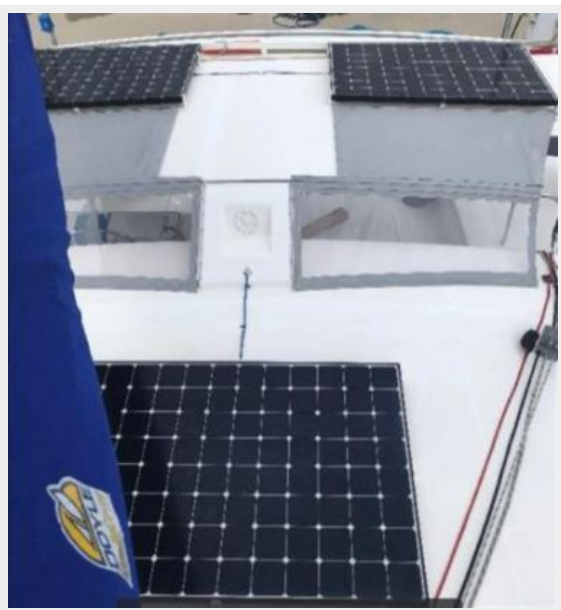
Компания предоставляет описание судна или яхты добросовестно, но не может гарантировать точность этой информации, а также не ручается за техническое состояние. Покупатель должен проинструктировать своих агентов или оценщиков исследовать представленную информацию более подробно, по собственному желанию. Продажа судна или яхты, изменение цены или снятие с продажи будет происходить без предварительного уведомления.

ФОТОГРАФИИ









КОНТАКТЫ

Андрей Шестаков (Andrey Shestakov) – ведущий яхтенный брокер отдела продаж яхт и судов компании Shestakov Yacht Sales Inc. Официальный представитель Shestakov Yacht Sales Inc. для русскоговорящих клиентов в центральном офисе компании в Майами/Форт Лодердейл/Флорида/США.

Контактная информация

Email: andrey@shestakovyachtsales.com

Web: shestakovyachtsales.com

Телефоны

Краснодарский край: **+7(918)465-66-44**

США, Майами, Флорида: **+1(954)274-4435**

Время работы

Понедельник – Суббота: **9:00 - 21:00**
EDT

Воскресенье: **Закрито**

Адрес



Harbour Towne Marina, 850 NE 3rd St,
STE 213, Dania, FL 33004