

## CIRCE — SPARKMAN & STEPHENS



**Судостроитель:**  
SPARKMAN & STEPHENS

**Год постройки:** 1966

**Модель:** Крейсерский кеч

**Цена:** ЦЕНА ЯХТЫ ПО ЗАПРОСУ

**Местонахождение:** United States

**Длина общая:** 65' 0" (19.81m)

**Ширина:** 16' 0" (4.88m)

**Мин. осадка:** 6' 0" (1.83m)

**Макс. осадка:** 14' 3" (4.34m)

Купить Circe — SPARKMAN & STEPHENS а также выбрать подходящую вам яхту из нашего каталога яхт вам поможет опытный яхтенный брокер Андрей Шестаков. На сегодняшний день компания Shestakov Yacht Sales Inc. имеет большое количество яхт в собственном списке продаж, а также тесно сотрудничает со всеми крупными яхтенными производителями по всему миру.

Для того чтобы купить яхту Circe — SPARKMAN & STEPHENS а также проконсультироваться по любому вопросу связанному с покупкой, продажей, чартером яхт позвоните по телефону **+7(918)465-66-44**.

# ОГЛАВЛЕНИЕ

ОГЛАВЛЕНИЕ	2
ХАРАКТЕРИСТИКИ	5
Обзор	5
Основная информация	5
Размеры	5
Скорость, вместимость и масса	6
Размещение	6
Корпус и палуба	6
Информация о двигателе	6
ПОДРОБНОЕ ОПИСАНИЕ	7
Overview	7
Accommodations & Layout	7
Galley	7
Hull & Deck Construction	7
Engine, Mechanical Equipment & Electrical System	8
Plumbing & Ventilation	8
Electronics, Sailing, Entertainment & Navigation Equipment	8
Deck Equipment	8
Spars, Sails & Rigging	9
Safety & Fire Protection	10
Исключения	10
Отказ от ответственности	10
ФОТОГРАФИИ	11
Cruising the Great Lakes	11
Circe Looking Aft	11
CIRCE Reaching	11
CIRCE Upwind	11
Helm & Cockpit	12

---

Main Salon	12
Navigation Station	12
Main Salon	12
Midships Head	13
Main Salon	13
Midships Stateroom	13
Midships Berths	13
Galley	13
Galley	13
Forward V-Berth	14
Forward Head	14
Galley	14
Master Stateroom	14
Master Stateroom	14
Master Head	14
Machinery Room	15
Machinery Room	15
Machinery Room	15
Machinery Room	15
Foredeck	15
Underbody	15
CIRCE Racing with all of her sails in the 1960s	16
S&S Original Sail Plan	16
S&S Original Arrangement Plan	16
<b>КОНТАКТЫ</b>	<b>17</b>
Контактная информация	17
Телефоны	17
Время работы	17
Адрес	17

---



# ХАРАКТЕРИСТИКИ

## Обзор

Circe is a 65' center cockpit ketch custom designed by Sparkman & Stephens and built by Robert E. Derecktor in Mamaroneck NY. She is a near sistership to Cruzan, Rewa, Beyonden, and Djinn. These are very capable offshore sailing and cruising yachts. Circe sailed in the Bermuda Race and the race to Norway. She has cruised in the Baltic, Mediterranean, Caribbean, New England, Pacific, and Pacific Northwest.

The boat has been stored indoors between cruising seasons and continually maintained by her owner. The alloy deck and teak were replaced (2007) along with a new bow thruster (2014), new Schaefer jib furler and new batteries (2010). CIRCE's hull was surveyed by ultrasound in 2015 and the aluminum plating was found to be seaworthy and within prescribed tolerances.

Professional Photography is Forthcoming

## Основная информация

<b>Тип судна:</b> Крейсерский кеч	<b>Подкатегория:</b> Моторный парусник
<b>Модельный год:</b> 1966	<b>Год постройки:</b> 1966
<b>Год обновления:</b> 2015	<b>Страна:</b> United States
<b>Верх:</b> Enclosed	<b>Кубрик:</b> Да

## Размеры

<b>Длина общая:</b> 65' 0" (19.81m)	<b>Длина по ватерлинии:</b> 47' 0" (14.33m)
<b>Ширина:</b> 16' 0" (4.88m)	<b>Мин. осадка:</b> 6' 0" (1.83m)
<b>Макс. осадка:</b> 14' 3" (4.34m)	

## Скорость, вместимость и масса

---

**Чистый вес:** 59 Pounds

**Вместимость воды:** 450 Gallons

**Вместимость сточного бака:** 40 Gallons

**Объем топливного бака:** 450 Gallons

## Размещение

---

**Всего кают:** 4

**Всего коек:** 6

**Спальные места:** 6

**Всего ком. состава:** 4

## Корпус и палуба

---

**Материал корпуса:** Aluminum

**Материал палубы:** Aluminum

**Комплектация корпуса:** Centerboard

**Цвет корпуса:** White

**Отделка корпуса:** Aluminum

**Дизайнер корпуса:** Sparkman & Stephens

**Дизайнер экстерьера:** Sparkman & Stephens

**Дизайнер интерьера:** Sparkman & Stephens

## Информация о двигателе

---

**Двигатели:** 1

**Производитель:** Cummins

**Модель:** 6BT-5.9

**Тип двигателя:** Inboard

**Тип топлива:** Diesel

---

# ПОДРОБНОЕ ОПИСАНИЕ

---

## Overview

---

Circe is a 65' center cockpit ketch custom designed by Sparkman & Stephens and built by Robert E. Derecktor in Mamaroneck NY. She is a near sistership to Cruzan, Rewa, Beyonden, and Djinn. These are very capable offshore sailing and cruising yachts. Circe sailed in the Bermuda Race and the race to Norway. She has cruised in the Baltic, Mediterranean, Caribbean, New England, Pacific, and Pacific Northwest.

The boat has been stored indoors between cruising seasons and continually maintained by her owner. The alloy deck and teak were replaced (2007) along with a new bow thruster (2014), new Schaefer jib furler and new batteries (2010). CIRCE's hull was surveyed by ultrasound in 2015 and the aluminum plating was found to be seaworthy and within prescribed tolerances.

## Accommodations & Layout

---

Forward is a V-Berth, cabinets, counters, and a hanging locker with a head/shower compartment on the port side. Just aft of the V-Berth is a full galley arranged to starboard, which opens into a vestibule outside a port side mid-stateroom. This offers stacked single berths, a hanging locker, and bureau as well as entry into a head/shower compartment. Just aft of these is the main cabin with a chart table, settee, wet locker, settee, table, and storage compartment below. The main cabin opens onto the covered cockpit with port and starboard settees and entry into the aft cabin. In the aft cabin are two single berths and a head/shower combination.

## Galley

---

The Galley is arranged to starboard and includes a 3 burner CNG stove/oven, refrigerator, icebox, microwave, dishwasher, and icemaker. There is a sink in the galley with Balmar hot water. Proper spare tanks, shutoffs, and controllers are installed. For other appliances, an icemaker is installed nearby, as is a Kariba washer/dryer in the engine compartment.

## Hull & Deck Construction

---

The hull and deck are of aluminum plating, with teak over the deck plating. The alloy deck and teak were both replaced in 2007. There is off-white Imron coating on the topsides and black bottom paint. The hull has been ultra sounded in 2015 and was found to be in good condition with plating in or above tolerances throughout.

Below the waterline, CIRCE is configured with a round bilge, welded aluminum hull around a full keel with tandem centerboards along centerline and a keel shoe hung rudder. Her board-up draft

at just over 6' to access cruising destinations, while her board-down draft brings her to 14' for upwind sailing performance.

---

## Engine, Mechanical Equipment & Electrical System

---

In an engine room beneath the cockpit sole, there is a 210hp turbocharged Cummins diesel inboard engine. This drives a 24" 3-bladed feathering propeller. Forward in the bow is a 10" bow thruster replaced in 2014 and run off the 32V system.

Providing auxiliary electrical power is an 8Kw Northern Lights Generator, with Belmar Isolation Transformers and Trace Inverter chargers hooked up to a bank of four 32V (new 2010), two 12V and two 8D batteries on the 32/12V DC system. The AC system is 125V with dockside and generator connections for 30A. Providing oversight for the system is an Electroguard corrosion monitor gauge.

---

## Plumbing & Ventilation

---

Onboard is a Vac-U-Flush electric head in the Master Stateroom, one Mansfield DC head in the amidships cabin, and one manual head.

Hot water onboard is generated in a 10 gallon heat exchanger as well as an Everhot system run off the Webasto furnace. Hot water is plumbed to outlets in the heads, showers, and galley. Offshore, fresh water can be generated by the integrated watermaking system.

Heating is generated by a Webasto DBW2020 diesel fired furnace with forced air handlers, which has its own separate 35 gallon fuel tank.

Tankage consists of two aluminum diesel tanks, totaling 200gal with dual Racor filters. Water is stored in a pair of 200 gallon tanks, totaling 400, with dual filling lines. Waste is stored in a single 40 gallon tank with tank-watch, ventilation, and pump-out capabilities.

---

## Electronics, Sailing, Entertainment & Navigation Equipment

---

Currently installed are a full set of sailing, navigation, and entertainment electronics. A Wagner autopilot is installed along with sailing instrumentation by Signet and Autohelm with numerous displays in the cockpit. A Garmin GPS276C chartplotter is onboard for navigation as well as a Raytheon Raychart Plotter. For safety and ease of navigation, a Raytheon radar system is installed on the mizzen mast. There is an Alpine CD/AM/FM/Cassette player along with speakers. The ship's VHF system is from iCom.

---

## Deck Equipment

---



CIRCE's deck hardware consists of Stainless Steel Marimum/Harken sailing hardware and self-tailing winches from Lewmar, Harken, and Barient – 2 of which are electric. Blocks are by Schaeffer and Penguin.

For relaxation, ample cushions, folding chairs, BBQ, and a cockpit table are onboard for use either underway or at anchor. Boarding and swim ladders are included. For excursions, there is a West Marine inflatable tender with a 3.5hp Mercury Outboard. Canvas covers are available for the mainsail, mizzen, forward hatch, liferaft, dinghy, winches, wheel, windlass and cockpit.

For ground tackle, on a bow roller with chain stopper and locker there is a stainless steel Delta-type anchor with 300' of chain led to a Keef windlass with nearby fresh water washdown. A Danforth H35 with 25' of chain and 300' of rode is stored in the aft storage compartment. A spare anchor is in storage.

Mooring equipment is provided by 8 fenders, 2 boathooks, and 20 nylon docklines.

## Spars, Sails & Rigging

---

CIRCE is rigged as a ketch, with aluminum spars and deck lighting from the mainmast spreaders. Her mainmast is a double spreader rig with off-white Imron paint and her mizzen is a single-spreader off-white Imron painted. Both her main and mizzen booms are also aluminum, additionally painted with off-white Imron. Spinnakers are flown off an aluminum spinnaker pole and reaching strut.

Her sail inventory includes the following:

- Main
- No. 1 Jib
- No. 2 Jib Topsail
- Fore Staysail
- Spinnaker
- Mizzen
- Mizzen Staysail
- Storm Trysail
- Storm Foresail

Standing rigging is stainless steel rod with open bodied turnbuckles as well as an insulated backstay for potential antenna use. Running rigging is a mix of wire-rope halyards, synthetic line halyards, and synthetic sheets.

The Mainsail is handled by a Stearns hydraulic vang, as well as a drum-type furling system on a jackstay. The jib is roller furling on a new Schaeffer 4100 furling system and the Mizzen is flaked with a Dutchman system.

---

## Safety & Fire Protection

---

CIRCE comes with a full set of safety, first aid, and emergency gear suitable for offshore sailing. She carries a full complement of life jackets (12), life rings (2), Flares, and signal lights, as well as a recently inspected 8 man Avon life raft.

3 Chemical fire extinguishers are onboard, as well as a built-in CO-2 system in the engine room.

---

## Исключения

---

При продаже яхты исключаются личные вещи владельца.

---

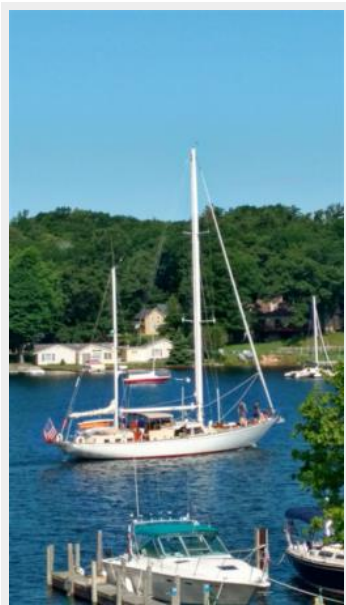
## Отказ от ответственности

---

Компания предоставляет описание судна или яхты добросовестно, но не может гарантировать точность этой информации, а также не ручается за техническое состояние. Покупатель должен проинструктировать своих агентов или оценщиков исследовать представленную информацию более подробно, по собственному желанию. Продажа судна или яхты, изменение цены или снятие с продажи будет происходить без предварительного уведомления.

# ФОТОГРАФИИ

## Cruising the Great Lakes



## Circe Looking Aft



## CIRCE Upwind



## CIRCE Reaching



### Helm & Cockpit



### Main Salon



### Navigation Station



### Main Salon





**Main Salon**



**Midships Head**



**Midships Stateroom**



**Midships Berths**



**Galley**



**Galley**



**Forward V-Berth**



**Forward Head**



**Galley**



**Master Stateroom**



**Master Stateroom**

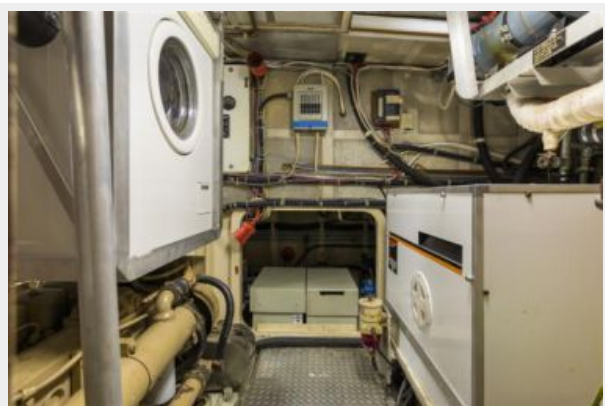


**Master Head**





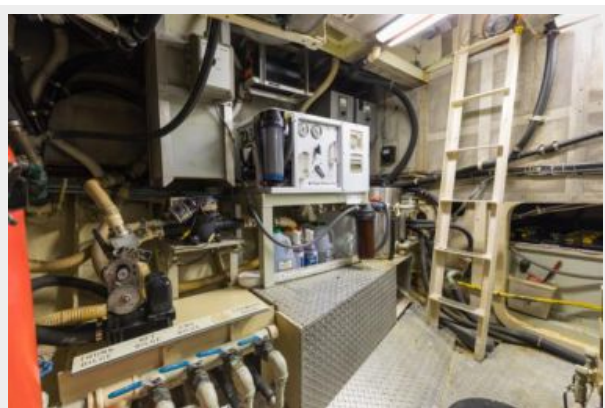
**Machinery Room**



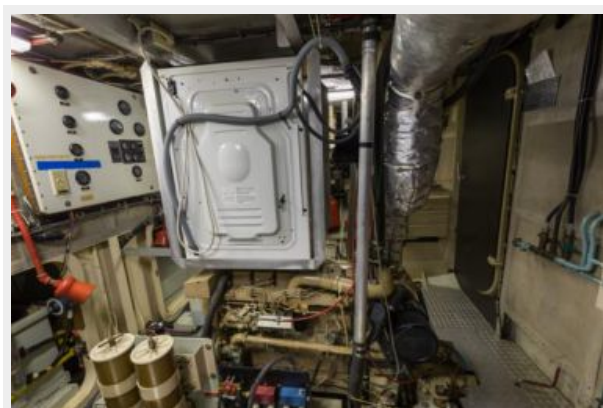
**Machinery Room**



**Machinery Room**



**Machinery Room**



**Underbody**



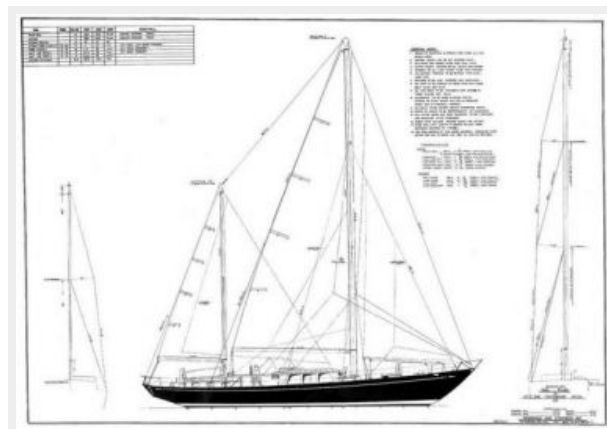
**Foredeck**



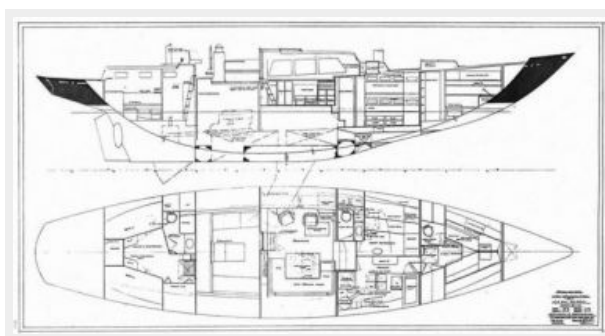
## CIRCE Racing with all of her sails in the 1960s



### S&S Original Sail Plan



### S&S Original Arrangement Plan





# КОНТАКТЫ

---

Андрей Шестаков (Andrey Shestakov) – ведущий яхтенный брокер отдела продаж яхт и судов компании Shestakov Yacht Sales Inc. Официальный представитель Shestakov Yacht Sales Inc. для русскоговорящих клиентов в центральном офисе компании в Майами/Форт Лодердейл/Флорида/США.

## Контактная информация

---

Email: [andrey@shestakovyachtsales.com](mailto:andrey@shestakovyachtsales.com)

Web: [shestakovyachtsales.com](http://shestakovyachtsales.com)

## Телефоны

---

Краснодарский край: **+7(918)465-66-44**

США, Майами, Флорида: **+1(954)274-4435**

## Время работы

---

Понедельник – Суббота: **9:00 - 21:00**  
EDT

Воскресенье: **Закрыто**

## Адрес

---



Harbour Towne Marina, 850 NE 3rd St,  
STE 213, Dania, FL 33004