

TROIKA — ENDEAVOUR



Builder: ENDEAVOUR

Year Built: 1979

Model: Cruising Sailboat

Price: PRICE ON APPLICATION

Location: United States

LOA: 37' 0" (11.28m)

Beam: 11' 7" (3.53m)

Max Draft: 4' 6" (1.37m)

Our experienced yacht broker, Andrey Shestakov, will help you choose and buy a yacht that best suits your needs **Troika — ENDEAVOUR** from our catalogue. Presently, at Shestakov Yacht Sales Inc., we have a wide variety of yachts available on our sale's list. We also work in close contact with all the big yacht manufacturers from all over the world.

If you would like to buy a yacht **Troika — ENDEAVOUR** or would like help answering any questions concerning purchasing, selling or chartering a yacht, please call **+1(954)274-4435**

TABLE OF CONTENTS

TABLE OF CONTENTS	2
SPECIFICATIONS	3
Overview	3
Basic Information	6
Dimensions	6
Speed, Capacities and Weight	6
Accommodations	6
Hull and Deck Information	6
Engine Information	6
PHOTOS	7
CONTACTS	9
Contact details	9
Telephones	9
Office hours	9
Address	9

SPECIFICATIONS

Overview

This classic is in stellar shape! Owned by very loving owners who cruised her on Lake Champlain (freshwater kept!) before adventuring to Florida and the Bahamas. ASK FOR 2015 SURVEY! MORE PHOTOS COMING SOON! She has JUST returned from cruising and is well-equipped and ready to go. This is a turn-key cruising vessel with a unique layout that was way ahead of its time. The Plan A featured a large private aft cabin, large head, large quarterberth, midships galley, and dinette forward.

Her Perkins has had all the moving parts replaced, and the head gasket was just changed. It fires right up and runs great. There are no blisters. She's a solid little ship with many many more miles left on her! Come see her today!

PERKINS:

- **New Starter, 2016**
- **Prop: 15 inch, 3 blades Classic, MAX PROP**
- **New Engine hour meter (2009)**
- **New timing Cover 2018**
- **New salt water pump 2016**
- **New heat exchanger 2013 New griffin fuel water New Airsep engine air filter 2014**
- **Shaft: 1.25"**
- **Stuffing box: 3/16"**
- **Transmission: Borg-Warner Velvet drive 72 series**
- **New high temp sender and alarm switch on engine**
- **New Neutral Safety Switch on Velvet Drive 2018**
- **New Emergency push button starting switch**
- **New Head Gasket 2018**

ELECTRIC

- **(2 starting batteries, 800 Amps) 2013**
- **(4 deep cycle 6v Trojan (2015)**
- **Alternator BALMAR 75 amp with regulator**
- **Battery Charger Power charger 12/40-3, (2016)**
- **Trimetric Battery Monitor (2017)**
- **110 V with outlets in the galley, the salon and the head**
- **Marine AC extension 110 v 30 amps (2011)**
- **Inverter AC / DC 450W (2018)**
- **Solar Panels Kyocera 135 watts (2011) + Solarworld 80 watts (2013) mppt 250 regulator (2013)**

ELECTRONICS

- VHF Radio in salon (2009)
- VHF Radio combined Chart plotter Standard Horizon (2009)
- Chart plotter maps C-MAP max, East USA & Bahamas (2009)
- VHF portable Radio (2009)
- Speed, ST40 (2009)
- Depth, ST40 (2009)
- Wind, ST40 (2009)
- Autopilot Raymarine Linear S1 + ST6002 (2009)
- SIMRAD chart plotter (RADAR + C-MAP) in salon (needs a new GPS antenna)
- AM/FM Radio, Bluetooth, 2 inside speakers + 2 speakers in the cockpit. (2009)

SAILS/RIG

- 1 Main Sail 2001
- 1 Genoa, 150% on furler
- 1 Genoa, 110% on furler
- 1 storm Jib on removable stay
- 1 Spinnaker with sock
- Furler: Profurl NC 42
- 2 self-tailing winches Lewmar 42
- 2 manual winches for the spinnaker
- 3 winches at the mast
- 1 winch on the cabin top

DINK

- Dinghy motor lift (2008)
- Dinghy motor support Edson
- MERCURY (2011) hard bottom, 8 feet 6 in. (2017)
- Outboard: Mariner 6 HP 4 stroke (2000) reconditioned in 2012
- PFD for dinghy + anchor

DECKS/GROUND TACKLE/SAFETY

- 3 stainless dorade boxes on deck 2009
- 10 Portvisers on port lights
- Safety flares
- Manual Bilge pump
- Automatic bilge pump
- Fixed Compass at the helm
- 6 fenders
- 3 anchors: 2 CQR + 1 Danforth + 125 feet of chain & 150 feet of Rode
- Giot manual windlass

- **Dodger 2014 / Bimini 2011 / Sail cover**
- **Lazy jacks**
- **Teak cockpit table (2009)**
- **Hot and cold shower in the cockpit**
- **Many mooring lines**
- **Cockpit cushions + 4 deck chairs**
- **1 Hatch umbrella**
- **1 companionway screen**
- **2 hatch screens**
- **2 automatic inflatable PFD and many different types of PFD**
- **Honda E2000 generator (2011)**
- **1 - 19 inch 12V flat screen TV (2014)**
- **One Glomex TV antenna (2014)**
- **3-fire extinguishers**
- **1 brass bell**
- **1 life buoy**
- **1 Life sling**
- **Brass clock & Barometer**
- **Practically all books concerning the boat and different equipment**

SPARES

- **1 Bosun's chair**
- **2, life sling clip-on tethers**
- **PSS Dripless shaft seal (never installed for a shaft of 1 ¼ inch**
- **Original alternator**
- **Matronix antenna splitter**
- **Spare diaphragm bilge pump**
- **Spare Rule-Mate 1500 gph automatic bilge pump**
- **Spare Sherwood G65 impeller pump (rebuilt in 2015)**
- **Spare Racor 500FG water separator**
- **Spare shut-off solenoid 12V**
- **Spare SCHAEFER twin clutch**
- **Spare prop (original)**
- **And many pieces of various rigging hardware.**

Rigging Steering wheel Inside Equipment Manual bilge pump Hot water Marine head Refrigerator Oven Electric bilge pump Battery charger Electrical Equipment Generator Shore power inlet Inverter Electronics Radar TV set Plotter Autopilot Navigation center GPS Compass CD player VHF Win

Outside Equipment/Extras Solar panel Cockpit table Tender Swimming ladder Cockpit cushions Cockpit shower Teak cockpit Outboard engine brackets Manual windlass **Covers Lazyjacks Mainsail cover Bimini Top** d speed and direction Radio Depthsounder Log-speedometer

Basic Information

Category: Cruising Sailboat

Model Year: 1979

Year Built: 1979

Country: United States

Dimensions

LOA: 37' 0" (11.28m)

LWL: 30' 0" (9.14m)

Beam: 11' 7" (3.53m)

Max Draft: 4' 6" (1.37m)

Clearance: 46' 0" (14.02m)

Speed, Capacities and Weight

Displacement: 20000 Pounds

Water Capacity: 101 Gallons

Fuel Capacity: 55 Gallons

Accommodations

Total Cabins: 1

Total Heads: 1

Hull and Deck Information

Hull Material: Fiberglass

Engine Information

Engines: 1

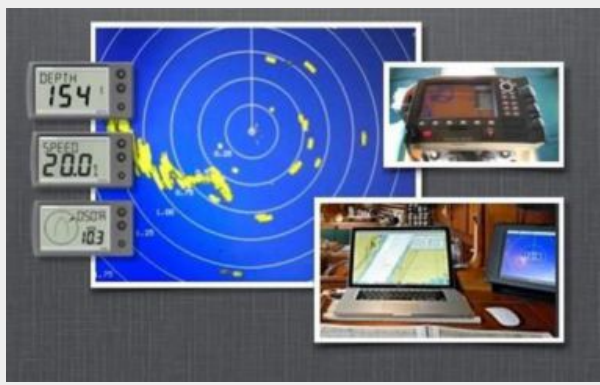
Manufacturer: Perkins

Model: 4108

Engine Type: Inboard

Fuel Type: Diesel

PHOTOS





CONTACTS

Andrey Shestakov, leading yacht broker of the sales department of Shestakov Yacht Sales Inc. Shestakov Yacht Sales Inc., the official representative of the Miami/Fort Lauderdale FL headquarters.

Contact details

Email: andrey@shestakovyachtsales.com

Web: shestakovyachtsales.com/en/

Telephones

USA: +1(954)274-4435

Office hours

Monday – Saturday: **9:00 - 21:00** EDT

Sunday: **closed**

Address



Harbour Towne Marina, 850 NE 3rd St,
STE 213, Dania, FL 33004