

СТС — VIKING



Судостроитель: VIKING

Длина общая: 65' 0" (19.81m)

Год постройки: 2000

Ширина: 18' 9" (5.72m)

Модель: Катер для спортивной рыбалки

Цена: ЦЕНА ЯХТЫ ПО ЗАПРОСУ

Местонахождение: United States

Купить СТС — VIKING а также выбрать подходящую вам яхту из нашего каталога яхт вам поможет опытный яхтенный брокер Андрей Шестаков. На сегодняшний день компания Shestakov Yacht Sales Inc. имеет большое количество яхт в собственном списке продаж, а также тесно сотрудничает со всеми крупными яхтенными производителями по всему миру.

Для того чтобы купить яхту СТС — VIKING а также проконсультироваться по любому вопросу связанному с покупкой, продажей, чартером яхт позвоните по телефону **+7(918)465-66-44**.

ОГЛАВЛЕНИЕ

ОГЛАВЛЕНИЕ	2
ХАРАКТЕРИСТИКИ	5
Обзор	5
Основная информация	5
Размеры	6
Скорость, вместимость и масса	6
Размещение	6
Корпус и палуба	6
Информация о двигателе	6
ПОДРОБНОЕ ОПИСАНИЕ	7
Upgrades	7
Salon	7
Galley and Dinette	8
Master Stateroom	8
Master Stateroom Head	8
Forward VIP Stateroom	9
Forward VIP Head	9
Port Aft Stateroom	9
Port Aft Stateroom Head	9
Starboard Stateroom	10
Starboard Head	10
Companionway	10
Lazarette	10
Flybridge	11
Tower	11
Electronics	12
Cockpit	12
Engine Room	13

Hull and Deck	13
Bottom and Hull	14
Disclaimer	14
Исключения	14
Отказ от ответственности	14
ФОТОГРАФИИ	15
65 Viking Convertible Salon	15
65 Viking Convertible Salon	15
65 Viking Convertible Galley-Dinette	15
65 Viking Convertible Galley	15
65 Viking Convertible Master Stateroom	15
65 Viking Convertible Master Stateroom	15
65 Viking Convertible Master Head	16
65 Viking Convertible VIP Stateroom	16
65 Viking Convertible VIP Stateroom	16
65 Viking Convertible VIP Head	16
65 Viking Convertible Stbd Stateroom	16
65 Viking Convertible Crew Stateroom	16
65 Viking Convertible Washer Dryer	17
65 Viking Convertible Crew Head	17
65 Viking Convertible Helm Electronics	17
65 Viking Convertible Helm Electronics	17
65 Viking Convertible Flybridge	17
65 Viking Convertible Flybridge	17
65 Viking Convertible Flybridge Seating	18
65 Viking Convertible Flybridge Seating	18
65 Viking Convertible Cockpit	18
65 Viking Convertible Cockpit Fight Chair	18
65 Viking Convertible Cockpit	18

65 Viking Convertible Transom	18
65 Viking Convertible Engine Room	19
65 Viking Convertible Engine Room	19
65 Viking Convertible Engine Room	19
65 Viking Convertible Engine Room	19
65 Viking Convertible Engine Room	19
65 Viking Convertible Engine Room	19
65 Viking Convertible Engine Room	20
65 Viking Convertible Engine Room	20
65 Viking Convertible Bow Tender	20
65 Viking Convertible Tender	20
65 Viking Convertible Davit	20
65 Viking Convertible Profile	20
КОНТАКТЫ	21
Контактная информация	21
Телефоны	21
Время работы	21
Адрес	21

ХАРАКТЕРИСТИКИ

Обзор

She is located at Swimming Hall Of Fame Marina!

Contact us today to schedule your showing!

This 2000 65 Viking Convertible, "СТС," is maintained by a full-time captain and crew. Her condition and upgrades show like new.

No expenses are spared to keep this vessel in top-notch condition and up to date with today's technologies. With a recent paint job from the Waterline up, updated electronics, and much more including:

- Engine and generator service up to date
- New Teak in Cockpit (2016)
- Bottom Paint and Prop Speed (2018)
- In addition to (Complete Bottom Job February 2018)
- New Cutlass Bearings
- New Non-Skid
- 5k hour service completed in 2018

СТС is turnkey and ready to go for her new owner to enjoy a carefree boating experience.

Основная информация

Тип судна: Катер для спортивной рыбалки

Подкатегория: Convertible

Модельный год: 2000

Год постройки: 2000

Страна: United States

Регистрационный номер: 1099027

Открытая палуба мостика: Да

Кубрик: Да

Размеры

Длина общая: 65' 0" (19.81m)

Ширина: 18' 9" (5.72m)

Длина привального бруса: 65' 0"
(19.81m)

Скорость, вместимость и масса

Водоизмещение: 100000 Pounds

Вместимость воды: 360 Gallons

Объем топливного бака: 1800 Gallons

Размещение

Всего кают: 4

Спальные места: 8

Всего ком. состава: 4

Корпус и палуба

Материал корпуса: Fiberglass

Информация о двигателе

Двигатели: 2

Производитель: MTU

Модель: 16V 2000

Тип двигателя: Inboard

Тип топлива: Diesel

ПОДРОБНОЕ ОПИСАНИЕ

Upgrades

New in 2018:

- Complete Bottom Job (February 2018)

New in 2016:

- New Teak in Cockpit
- 4000 Hour Service

New in 2014:

- Prop speed September
- Subzero unit in galley
- Eskimo ice chipper
- Charles ISO booster (port side)

New in 2013:

- W-4 completed
- Port 21.5 Kw generator
- Samsung LCD TV on upgraded gear bracket in main salon

New in 2012:

- Full paint job
- Cruisair for bait freezer unit
- Air handlers in main salon
- Kenmore ice machine in salon
- Isinglass enclosure

New in 2011:

- Electronics

Salon

- New Kenmore ice machine in salon (2012)
- New air handlers in main salon
- New Samsung LCD TV on upgraded gear bracket in main salon (2013)
- Carpeted sole with carpet runner
- Recessed overhead dimming lights

- 110-volt A.C. and 24-volt D.C. electrical panel
- Indirect lighting
- U-shaped sofa with storage below
- Toshiba DVD player
- DirecTV control box
- Kenmore Elite ice maker
- Liquor locker with storage, starboard

Galley and Dinette

- New Subzero unit in galley (2014)
- Dinette with U-shaped benchseat and storage underneath
- Storage drawers
- A.C. and D.C. electrical panel with freshwater gauge
- Sharp Carousel microwave oven
- Water tank level gauge
- 3-burner electric Kenyon stovetop
- Fluorescent counter lighting
- Four Sub-Zero refrigerator drawers
- Two Sub-Zero freezer drawers
- Kenmore Dishwasher

Master Stateroom

- Carpeted sole
- Island berth with indirect light
- Storage underneath berth
- Nightstand and bureau
- Two hanging lockers
- Cruisair air conditioning control
- Sharp television
- Sony DVD player
- Ensuite head

Master Stateroom Head

- Mirrored overhead
- 110-volt GFI outlet
- Exhaust fan
- Vacuflush head
- Vanity with molded sink

- Two medicine lockers with mirrored doors
- Shower stall with door and bench seat
- Mirrored locker with shelves

Forward VIP Stateroom

- Double island berth
- Lift up berth for storage
- Storage drawers
- Indirect lighting
- DirecTV control box
- Magnavox DVD player
- Sharp television
- Hanging lockers
- Cruisair air conditioning controls
- Ensuite head

Forward VIP Head

- Mirrored overhead
- 110-volt outlet
- Vacuflush head
- Vanity with molded sink and hot/cold water faucet
- Medicine cabinet with two mirrored doors
- Exhaust blower
- Shower stall with bi-fold doors
- Hand-held showerhead on hose with wall mount

Port Aft Stateroom

- Overhead hatch with screen
- Upper and lower single berths
- Storage below lower bunk
- Air conditioning control panel
- Sharp television
- Lockers with mirrored doors
- Hanging locker
- Ensuite head

Port Aft Stateroom Head

- Entrance from port aft stateroom
- Teak and holly sole
- Vacuflush head
- Vanity with molded sink
- Hot/cold faucet
- Storage under sink
- 110-volt GFI outlet
- Mirrored medicine locker
- Exhaust blower
- Corner shower stall with bi-fold doors
- Hand-held showerhead on hose

Starboard Stateroom

- Sharp television
- Upper and lower single bunks
- Hanging locker
- Direct TV television control box
- Entrance to head

Starboard Head

- Entrance via forward companionway and starboard stateroom
- Teak and holly sole
- Vacuflush head
- Vanity with molded sink
- Hot/cold faucet
- Storage underneath sink
- 110-volt GFI outlet
- Mirrored medicine locker
- Exhaust blower
- Corner shower stall with bi-fold doors

Companionway

- Carpeted sole with carpet
- Storage locker
- Kenmore washer and dryer (dryer is new)

Lazzarette

- Two electric/automatic bilge pumps
- High water alarm
- Macerator pump for bait well
- Sealand sump discharge pump
- Polyethylene 5-gallon sump
- Trim tab reservoir and control unit
- Simrad rudder feedback sensor to autopilot
- Two hydraulic steering actuators

Flybridge

- New Isinglass enclosure (2012)
- New Electronics (2011)
- Two New MTU displays (2011)
- New freezer compressor (2013)
- Overhead lights in hardtop
- Garmin GPS Map 4208
- Two ICOM IC-M504 VHF radios
- Furuno NavNet
- Raymarine ST70
- Clarion stereo
- Furuno FCV1150 depth display
- Raymarine ST70
- Garmin GPS M7212
- Emergency back up engine controls
- SEA 2250 SSB radio
- 12-volt DC outlet
- SimradAP22 autopilot
- Bennett trim tab controls
- Fireboy system discharge alarm/engine shutdown system
- Starboard companion chair
- Helm chair
- Bow thruster control
- L-shaped benchseat, port, with cushions and storage under
- Built-in cabinetry, forward centerline, with built-in refrigerator and freezer
- Six aft rail mounted rod holders

Tower

- Forward floodlights
- Port and starboard floodlights
- Two aft facing spreader lights

- Tower control station with: steering wheel, two MTU displays, Robertson AP22 autopilot, Clarion stereo, Icom IC-M422 VHF
- Anchor and forward navigation light
- Ritchie magnetic compass
- Two speakers
- Cover for control station
- Upholstered bench seat

Electronics

- New Electronics (2011)
- Radar: Furuno
- VHF: Two Icom-M504 and Icom 422
- SATCOM: KVH Tracphone
- SATTV: KVH TracVision
- Autopilot: Simrad AP22
- GPS: Furuno NavNet / Garmin GPS 4208 / Garmin 7212
- Plotter Program: Nobeltec
- Depthsonder: Furuno NavNet / Furuno FCV 1150 /Raymarine ST70 digital display
- Compass: Two Simrad electronic and Ritchie magnetic

Cockpit

- New Cruisair for bait freezer unit (2012)
- Teak deck
- Rod holders, two port and two starboard
- Refrigerated drink box under step
- Transom live well (no bait pump)
- Freshwater wash-down
- Seawater wash-down
- Eskimo ice maker output
- Transom door
- Shore/telephone/television inlet
- Tackle center
- Bait prep area
- Deep freezer
- Storage drawers
- Two overhead lights in overhang
- Ladder to bridge
- Fighting chair
- Livewell in deck

Engine Room

- W-4 completed (2013)
- New port 21.5 Kw generator (2013)
- New Eskimo ice chipper (2014)
- New Charles ISO booster, port side (2014)
- 27.5-kw Onan generator
- Electric/automatic bilge pump, aft
- High water alarm
- Racor fuel filter for each generator
- Four main engine Racor fuel filters
- Two 110-volt dual-lamp fluorescent lights with safety lenses
- Three Cruisair air conditioning compressors
- Two cockpit freezer compressors
- Two circulating fans
- Sea Recovery watermaker
- Two D.C. electric blowers
- Four 12-volt 4D batteries in covered boxes, inboard of starboard engine
- Four 12-volt 4D batteries in covered boxes, inboard of port engine
- 30-gallon hot water heater
- Electric oil change pumps for engines and generators with lube oil reservoir tank
- Eskimo ice machine
- Charles iso-boost shore power transformer
- Dolphin 24-volt 50-amp battery charger
- 110-volt freshwater pump with accumulator tanks and filter
- Hydraulic steering reservoir with pressure gauge
- Raw water washdown pump

Hull and Deck

- Full paint job (2012)
- 85-lb. Fortress aluminum anchor with approximately 15' of chain and approximately 200' of 5/8" nylon rode
- Maxwell 3500 electric windlass with two deck switches
- Quick 1,000-lb capacity electric/hydraulic
- Bow pulpit with anchor chute
- Anchor roller
- Three deck hatches
- Aluminum bow rail
- Access to rope locker with freshwater wash-down
- Tender chocks
- Tender davit with stainless steel running rigging
- Grab rail above and below salon windows, port and starboard

- Rupp outriggers
- Quick Lift Davit 1,000-lb. capacity

Bottom and Hull

- Complete Bottom job (February 2018)
- New prop speed (September 2014)
- Double-cylinder trim tabs
- Two transom steps
- Bow thruster
- Painted Light blue Alex Seal
- Engine room vents

Disclaimer

The Company offers the details of this vessel in good faith but cannot guarantee or warrant the accuracy of this information nor warrant the condition of the vessel. A buyer should instruct his agents, or his surveyors, to investigate such details as the buyer desires validated. This vessel is offered subject to prior sale, price change, or withdrawal without notice.

Mechanical Disclaimer Engine and generator hours are as of the date of the original listing and are a representation of what the listing broker is told by the owner and/or actual reading of the engine hour meters. The broker cannot guarantee the true hours. It is the responsibility of the purchaser and/or his agent to verify engine hours, warranties implied or otherwise and major overhauls as well as all other representations noted on the listing.

X

Исключения

При продаже яхты исключаются личные вещи владельца.

Отказ от ответственности

Компания предоставляет описание судна или яхты добросовестно, но не может гарантировать точность этой информации, а также не ручается за техническое состояние. Покупатель должен проинструктировать своих агентов или оценщиков исследовать представленную информацию более подробно, по собственному желанию. Продажа судна или яхты, изменение цены или снятие с продажи будет происходить без предварительного уведомления.

ФОТОГРАФИИ

65 Viking Convertible Salon



65 Viking Convertible Salon



65 Viking Convertible Galley-Dinette



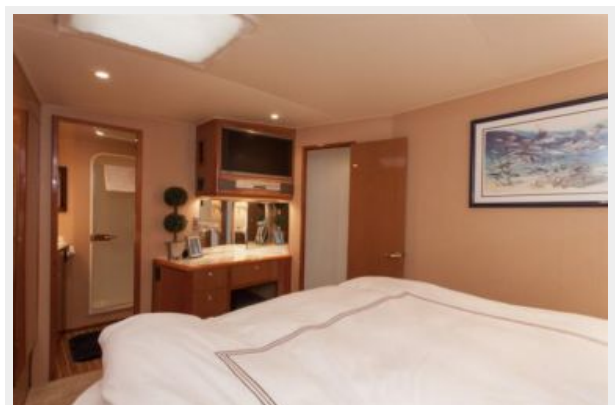
65 Viking Convertible Galley



65 Viking Convertible Master Stateroom



65 Viking Convertible Master Stateroom



65 Viking Convertible Master Head



65 Viking Convertible VIP Stateroom



65 Viking Convertible VIP Stateroom



65 Viking Convertible VIP Head



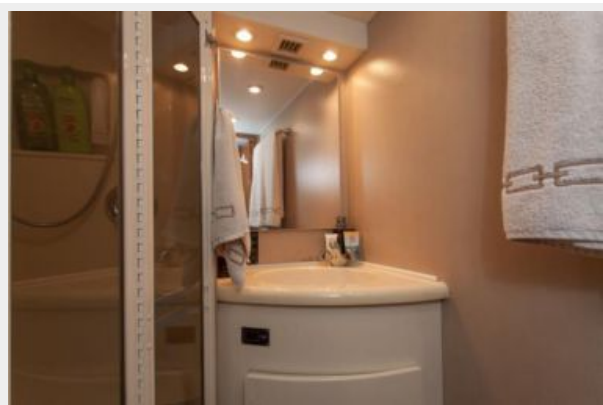
65 Viking Convertible Stbd Stateroom



65 Viking Convertible Crew Stateroom



65 Viking Convertible Crew Head



65 Viking Convertible Washer Dryer



65 Viking Convertible Helm Electronics



65 Viking Convertible Helm Electronics



65 Viking Convertible Flybridge



65 Viking Convertible Flybridge



65 Viking Convertible Flybridge Seating



65 Viking Convertible Flybridge Seating



65 Viking Convertible Cockpit



65 Viking Convertible Cockpit Fight Chair



65 Viking Convertible Cockpit



65 Viking Convertible Transom



65 Viking Convertible Engine Room



65 Viking Convertible Engine Room



65 Viking Convertible Engine Room



65 Viking Convertible Engine Room



65 Viking Convertible Engine Room



65 Viking Convertible Engine Room



65 Viking Convertible Engine Room



65 Viking Convertible Engine Room



65 Viking Convertible Bow Tender



65 Viking Convertible Tender



65 Viking Convertible Davit



65 Viking Convertible Profile



КОНТАКТЫ

Андрей Шестаков (Andrey Shestakov) – ведущий яхтенный брокер отдела продаж яхт и судов компании Shestakov Yacht Sales Inc. Официальный представитель Shestakov Yacht Sales Inc. для русскоговорящих клиентов в центральном офисе компании в Майами/Форт Лодердейл/Флорида/США.

Контактная информация

Email: andrey@shestakovyachtsales.com

Web: shestakovyachtsales.com

Телефоны

Краснодарский край: **+7(918)465-66-44**

США, Майами, Флорида: **+1(954)274-4435**

Время работы

Понедельник – Суббота: **9:00 - 21:00**
EDT

Воскресенье: **Закрыто**

Адрес



Harbour Towne Marina, 850 NE 3rd St,
STE 213, Dania, FL 33004