

88' 2011 HORIZON LUCKY DOG — HORIZON



Судостроитель: HORIZON

Год постройки: 2010

Модель: Моторная яхта

Цена: ЦЕНА ЯХТЫ ПО ЗАПРОСУ

Местонахождение: United States

Длина общая: 89' 4" (27.23m)

Ширина: 21' 0" (6.40m)

Макс. осадка: 6' 1" (1.85m)

Крейс. скорость: 18 Kts. (21 MPH)

Макс. скорость: 21 Kts. (24 MPH)

Купить 88' 2011 Horizon Lucky Dog — HORIZON а также выбрать подходящую вам яхту из нашего каталога яхт вам поможет опытный яхтенный брокер Андрей Шестаков. На сегодняшний день компания Shestakov Yacht Sales Inc. имеет большое количество яхт в собственном списке продаж, а также тесно сотрудничает со всеми крупными яхтенными производителями по всему миру.

Для того чтобы купить яхту 88' 2011 Horizon Lucky Dog — HORIZON а также проконсультироваться по любому вопросу связанному с покупкой, продажей, чартером яхт позвоните по телефону **+7(918)465-66-44**.

ОГЛАВЛЕНИЕ

ОГЛАВЛЕНИЕ	2
ХАРАКТЕРИСТИКИ	4
Обзор	4
Основная информация	4
Размеры	4
Скорость, вместимость и масса	4
Размещение	5
Корпус и палуба	5
Информация о двигателе	5
ПОДРОБНОЕ ОПИСАНИЕ	6
Description	6
Accommodations	6
Construction	7
Boat Deck	7
Forward Deck	7
Aft Deck	8
Flybridge	8
Mechanical and Engine Details	8
Electrical Systems	9
Mechanical Systems	9
Interior Décor and Equipment	10
Salon	11
Galley	11
Electronics	11
2017/2018 Updates	12
Closing Comments	12
Disclaimer	13
Исключения	13

Отказ от ответственности	13
ФОТОГРАФИИ	14
Exterior II	14
Exterior III	14
General Layout	14
КОНТАКТЫ	24
Контактная информация	24
Телефоны	24
Время работы	24
Адрес	24

ХАРАКТЕРИСТИКИ

Обзор

This 2011 model Horizon E88 skylounge motor yacht built on a 21' beam features a (4) stateroom with (2) crew cabin layout, as well as both formal dining and a country kitchen. Built with twin CAT C-32 1700 hp engines, full AV and electronics, hydraulic stern/bow thrusters, digital stabilizers, watermaker and dinghy with davit. **Please Contact Steve Bozas-Wessinger @ 954-646-5600 | Steveb@yachtconnexion for more details!**

Основная информация

Тип судна: Моторная яхта	Модельный год: 2011
Год постройки: 2010	Страна: United States
Верх: Enclosed	Открытая палуба мостика: Да

Размеры

Длина общая: 89' 4" (27.23m)	Длина по ватерлинии: 75' 6" (23.01m)
Ширина: 21' 0" (6.40m)	Макс. осадка: 6' 1" (1.85m)

Скорость, вместимость и масса

Крейс. скорость: 18 Kts. (21 MPH)	Макс. скорость: 21 Kts. (24 MPH)
Водоизмещение: 160000 Pounds	Чистый вес: 80 Pounds
Вместимость воды: 500 Gallons	Вместимость сточного бака: 250 Gallons
Объем топливного бака: 2700 Gallons	

Размещение

Всего кают: 4

Всего ком. состава: 5

Койки экипажа: 2

Комм. состав экипажа: 1

Корпус и палуба

Материал корпуса: Fiberglass

Дизайнер корпуса: John Lindblom

Информация о двигателе

Двигатели: 2

Производитель: CAT

Модель: C-32A

Тип двигателя: Inboard

Тип топлива: Diesel

ПОДРОБНОЕ ОПИСАНИЕ

Description

This 2011 model Horizon E88 skylounge motor yacht built on a 21' beam features a (4) stateroom with (2) crew cabin layout, as well as both formal dining and a country kitchen. Built with twin CAT C-32 1700 hp engines, full AV and electronics, hydraulic stern/bow thrusters, digital stabilizers, watermaker and dinghy with davit.

- 2017 Updates
 - Oil and filters changed 8/2017
 - CAT after coolers updated 8/2017
 - Fuel filters changed 8-2017
- 2018 Updates
 - Bottom paint 3/2018
 - New AC chiller 5/2018
 - New batteries 5/2018
 - Exterior polish 4/2018
 - New Salon blinds in salon and F/B 7/2018
 - New custom made leather sofa for salon 7/2018
 - New flooring in galley area and F/B 7/2018
 - New Bunk covers for master and 3 guest staterooms forward 7/2018
 - New windscreen for galley dinette window forward 7/2018
 - Complete engine room detail 7/2018
 - New crew dinette 7/2018
 - New Fabrica carpet in salon, forward staterooms and crew area 7/2018
 - HRO (watermaker) serviced & filters 12/18
 - Hamman sewage serviced 12/18
 - Second chiller replaced 1/19

Accommodations

With a 21' beam, the Horizon E88 contains generous interior volume. The main salon features walnut gloss finished wood. This full-beam salon features a starboard side day head, comfortable L-shaped sofa to port and loveseat to starboard. The additional swivel chair is to port. Moving forward, formal dining is port with plenty of seating for (8) and starboard - stereo equipment, and a SubZero wine cooler. The country kitchen to port comes complete with granite countertops, beautiful cabinetry, generous storage and a leather U-shaped dinette forward with (2) stools. Starboard of the dinette is the staircase leading to the lower deck, which houses the master, VIP, twin guest and twin bunk staterooms with beech gloss finish wood throughout. To port of the companionway is the twin guest, hanging locker and ensuite head. To the starboard is the twin bunk and also features a hanging locker and private access to the head, washer/dryer in

companionway. Forward is the VIP with a queen-size berth, (2) hanging lockers and a spacious ensuite head. All ensuite heads include granite countertops, backsplashes and inlaid sinks with a curved wood face.

Construction

- White gelcoat finish
- One-piece hull lamination and longitudinal stringers
- SCRIMP infusion process
- High-density foam cored construction above waterline
- Foam cored reinforcement for strength
- Interior structure components all property bonded to hull
- Fiberglass solid bottom
- Stringers with high density foam coring
- Strong collision bulkhead for extra safety

Boat Deck

- Stbd side L-shaped seating with storage & Hi/Lo table
- Electric grill with fiberglass cabinet
- Sink with storage on portside
- 14' Novurania with 60hp Yamaha with cover
- Cradle for dinghy
- Removable hoop rails aft
- Hydraulic Steelhead davit 2500 lbs

Forward Deck

- (2) Maxwell VWC2500 vertical hydraulic anchor winches
- (2) High tensile 1/2", 250' anchor chains
- (2) S/S 200lb anchors
- (4) FRP bulwark side doors
- Freshwater anchor chain wash-down
- (2) Anchor chain windlass chain counters
- Heavy-duty S/S 2" handrail with 1 1/4" stanchions
- (2) Corner hausers
- (2) Deckhouse side entrance doors
- Frameless windows, tinted Low-E tempered glass for whole boat
- (18) S/S covers for port lights
- BOW FRP step with cushion
- Custom LED exterior lighting

- Sunpad with cushions & cover

Aft Deck

- Internal boat hook holders
- S/S Trend self-locking door for main salon
- Teak aft decks, teak swim platform and teak steps
- Compass pattern inserted on aft deck teak floor
- Aft deck bar with sink, icemaker and fridge
- Custom aft deck Hi/Lo dining table
- Swim ladder storage in swim platform
- Built-in shower with hot/cold water above swim platform
- Large aft deck seating with cushions & covers
- Curved staircase to flybridge portside
- (2) Boarding doors
- (3) Aft deck loose chairs

Flybridge

- Removable S/S rails around boat deck
- Non-skid ledges for washing skylounge windows
- FRP cabinet with sink & flush mount grill
- Tokai Sunshin search light
- Buell air horns on top of radar arch
- Enclosed bridge with custom FRP seat & table
- Interior walnut wood finish and wood floors
- (1) Stidd helm chair
- Hatch to flybridge
- Refrigerator and icemaker
- (3) Wiper controls
- Hi/Lo granite table for seating
- L-shaped seating with storage
- 42" LG Hi/Lo TV cabinet
- (2) Loose stools
- Direct SAT TV box
- Sony Blu-Ray player
- (5) BOSE stereo & TV speakers

Mechanical and Engine Details

- Twin CAT C32A 1700hp engines with reduction gears
- S/S Shafts Aquamet HS 22#
- Main & intermediate bronze struts with backing plates
- Shaft & rudder packing glands with Tides
- Docking station on aft deck port side
- Hynautic power steering system
- S/S Rudder with zinc plates
- Hydraulic ABT stern thrusters, 38hp
- Hydraulic ABT bow thrusters, 45hp
- Hynautic heavy-duty trim tabs with indicators
- TRAC stabilizers
- Glendinning engine controls with back-up system & remote control
- A30 Grade fire insulation
- S/S Overhead grab rail on each side of engine
- Complete Delta T engine room ventilation system
- Engine alarm system for low oil pressure & high water temp
- Air compressor
- Nutone central vacuum cleaner

Electrical Systems

- Octoplex switch panel system
- (2) Onan 27.5kW generators with sound shield (1300 hours)
- (2) Glendinning shorepower 100A cable masters with 75' cable
- Shorepower connection, Charles ISO Boost transformer 100A
- Inverter/charger Xantrex 4kW/150A
- Guest battery switch (vapor proof)
- (4) Engine start batteries
- (8) 200AH gel cell batteries for ships service power
- Separate 120amp/hr start battery for generator
- GFI protection for AC required outlets
- Indirect lighting under valance in salon, staterooms, pilothouse and galley
- Electrolysis bonding system
- Cathodic protection w/zinc anodes for shafts, struts, etc.
- Sub-panel design in each zone for electrical distribution
- (2) Underwater lights
- (2) Stern docking lights and (2) boarding lights on port and stbd deckhouse
- (2) Foresti & Suardi down-lights spotting toward radar arch

Mechanical Systems

- Chilled water Marine Air air conditioning

- 2700gal Aluminum fuel tanks w/sight and electric gauges
- Dual Racor 75/1000 MA fuel filters/water separator, each engine
- Fuel transfer pump
- Reverso FPS210 fuel polishing system
- Oil change pump system for engines & generator
- 500gal Fiberglass water tanks
- Sea Recovery watermaker 900gal/day
- High-volume AC freshwater pressure pump & backup DC pump
- Freshwater charcoal filters in main supply pipe & galley
- Marine-grade lines for freshwater system
- Hot water circulation pump
- (2) 30gal water heaters
- Hamann waste water treatment system
- 200gal Holding tank with macerator pump
- 100gal Sump tank
- Tecma toilet system
- Y-valve for holding tank with deck fitting for dockside pump out
- (5) Electric Rule bilge pumps
- (2) Manual bilge pumps i engine room & forward cabin
- Bilge exhaust ventilation fans
- Fixed fire extinguisher for ER with remote control
- Auto-shutdown system for fire safety
- Automatic fire damper system
- (4) Portable fire extinguishers in recessed lockers
- CO2 Fire detector or smoke detector in each cabin
- (2) Maxwell anchor controls on flybridge
- Built-in dockwater water softener
- (2) Searchlight controls flybridge

Interior Décor and Equipment

- Guest accommodations include full-beam master stateroom with King bed, walk-in closet, and large head with shower; port guest twin cabin; stbd bunk cabin; and queen VIP - all ensuite
- Crew area has (2) staterooms, full head and crew galley/dinette with access from salon & transom door and washer/dryer
- Walnut & maple burl high-gloss wood on main deck and skylounge
- Beech and camphour burl hi-gloss wood on lower deck
- Interior stairs from main deck to skylounge
- Grey lacquer finish in galley & head walls
- Italian high-quality door lock & cabinet door locks
- (3) Marine prism skylights
- LED Rope lights for safety steps

Salon

- Granite in main salon entrance
- Custom fabric sofa, loveseat and extra chair
- Dayhead aft at main salon entrance
- Formal dining table with (6) chairs
- Storage on stbd side in salon

Galley

- Granite countertops & floor
- S/S Sink with garbage disposal
- SubZero refrigerator with (4) SubZero drawers and wine cooler
- Full-size electric cooktop with exhaust blower above
- GE Full-size microwave convection oven
- GE dishwasher
- Broan trash compactor

Electronics

- Exterior connector for shore phone & TV
- (1) KVH 24" TracVision HD7 SAT TV
- (1) HD7 Empty dummy dome
- (8) DirecTV H23 HD satellite receivers
 - Aft Deck
 - LG 19" LCD TV with drop down TV lift
 - Speakers and remote control, signal shared through BOSE stereo amplifier
 - Direct SAT TV box
 - Salon
 - Sony 42" TV
 - BOSE Home Theater Lifestyle 28
 - Sony Blu-Ray DVD playter
 - Direct TV
 - SAT TV
 - Galley
 - LG 19" LCD TV
 - Speakers & remote control, signal shared through BOSE stereo amplifier
 - Master Stateroom
 - LG 32" LCD TV
 - BOSE Home Theater Lifestyle 28
 - Sony Blu-Ray DVD player
 - Guest Staterooms

- LG 19" LCD TV (VIP cabin and Port guest cabin)
- Pyle all-in-one flip down monitor & DVD player (stbd guest cabin)
- Yamaha MCR-710 micro-component system, can play AM/FM, DVD/VCD/mp3 (VIP cabin & Port guest cabin)
- Crew Quarters
 - Sharp 20" TV in mess
 - Yamaha MCR-710 micro-component system can play AM/FM, DVD/VCD/mp3
- Pilothouse
 - (3) Raymarine E140W 14.1" display and (1) 15" LCD touch panel for Octoplex/N2Kview
 - Octoplex switch panel system
 - (1) Raymarine 6' HD AND (1) Raymarine 4' HD digital open array radar
 - (2) Raymarine RAYSTAR 125gps receiver
 - (2) ICM VHF Marine transceiver
 - Fishfinder/wind/depth/speed transducer/autopilot w/Raymarine ST70 multifunction display
 - Raymarine AIS transceiver, Furuno NX700
 - Navtex receiver, digital antenna cellular amplifier
 - Stand-alone Nav computer
 - CCTV at engine room & aft deck, connected to Octoplex system
 - Panasonic PABX system
 - FLIR infrared camera
 - BOSE Home Theater Lifestyle 28
 - Speakers & remote control, signal shared through BOSE stereo amplifier
 - Danforth magnetic compass

2017/2018 Updates

- 2017 Updates
 - Oil and filters changed 8/2017
 - CAT after coolers updated 8/2017
 - Fuel filters changed 8-2017
- 2018 Updates
 - Bottom paint 3/2018
 - New AC chiller 5/2018
 - New batteries 5/2018
 - Exterior polish 4/2018

Closing Comments

This 2010/2011 model Horizon E88 is built on a 21-foot beam and features a (4) ensuite

stateroom layout with separate crew accommodations in (2) cabins with full crew dinette and head. Walnut hi-gloss is used on the upper and main deck with beech hi-gloss wood used below deck. Full walk-around side decks, enclosed bridge, formal dining area and country kitchen make the E88 a well thought-out practical design. Designed by John Lindblom, this model was created specially with the enclosed bridge so the proportions and flow of the style lines are in keeping with the elegance of the overall design. The 21' beam allows for a generous salon and wide safe side deck walk-arounds. The formal dining area, country kitchen and abundance of natural light make the new 88 a stunning addition to the E series line-up. Four guest staterooms forward with dedicated crew aft allow for the flexibility of design to create the ideal yacht to suit your yachting lifestyle.

Disclaimer

The Company offers the details of this vessel in good faith but cannot guarantee or warrant the accuracy of this information nor warrant the condition of the vessel. A buyer should instruct his agents, or his surveyors, to investigate such details as the buyer desires validated. This vessel is offered subject to prior sale, price change, or withdrawal without notice

Исключения

При продаже яхты исключаются личные вещи владельца.

Отказ от ответственности

Компания предоставляет описание судна или яхты добросовестно, но не может гарантировать точность этой информации, а также не ручается за техническое состояние. Покупатель должен проинструктировать своих агентов или оценщиков исследовать представленную информацию более подробно, по собственному желанию. Продажа судна или яхты, изменение цены или снятие с продажи будет происходить без предварительного уведомления.

ФОТОГРАФИИ

Exterior II



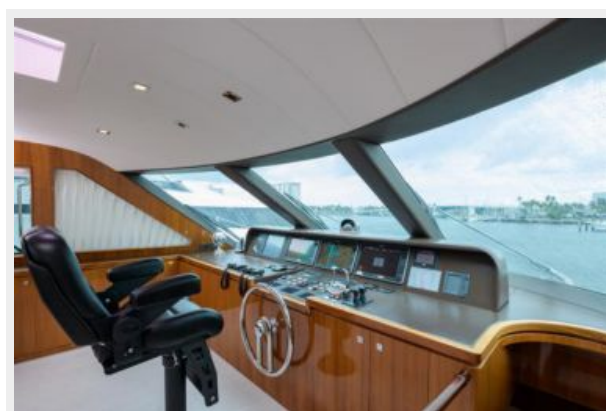
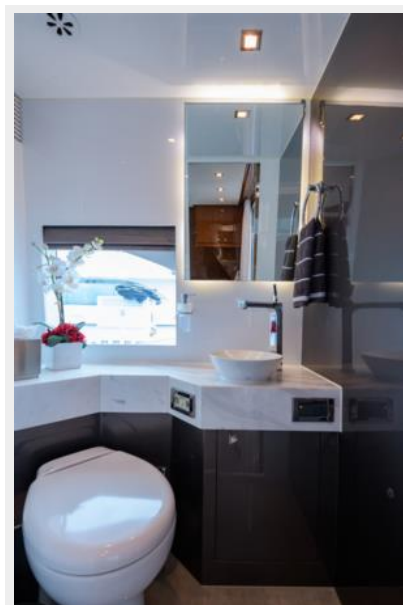
Exterior III



General Layout







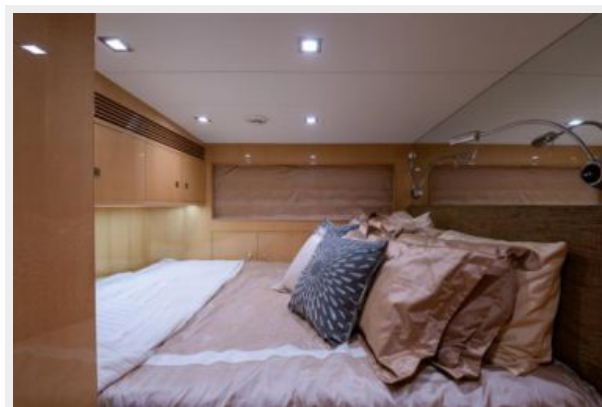














КОНТАКТЫ

Андрей Шестаков (Andrey Shestakov) – ведущий яхтенный брокер отдела продаж яхт и судов компании Shestakov Yacht Sales Inc. Официальный представитель Shestakov Yacht Sales Inc. для русскоговорящих клиентов в центральном офисе компании в Майами/Форт Лодердейл/Флорида/США.

Контактная информация

Email: andrey@shestakovyachtsales.com

Web: shestakovyachtsales.com

Телефоны

Краснодарский край: **+7(918)465-66-44**

США, Майами, Флорида: **+1(954)274-4435**

Время работы

Понедельник – Суббота: **9:00 - 21:00**
EDT

Воскресенье: **Закрито**

Адрес



Harbour Towne Marina, 850 NE 3rd St,
STE 213, Dania, FL 33004