

## 40FT 2016 INTREPID 400 CUDDY — INTREPID



**Builder:** INTREPID

**Year Built:** 2016

**Model:** Center Console

**Price:** PRICE ON APPLICATION

**Location:** United States

**LOA:** 40' 0" (12.19m)

**Beam:** 11' 1" (3.38m)

**Min Draft:** 2' 9" (0.84m)

Our experienced yacht broker, Andrey Shestakov, will help you choose and buy a yacht that best suits your needs 40ft 2016 Intrepid 400 Cuddy — INTREPID from our catalogue. Presently, at Shestakov Yacht Sales Inc., we have a wide variety of yachts available on our sale's list. We also work in close contact with all the big yacht manufacturers from all over the world.

If you would like to buy a yacht 40ft 2016 Intrepid 400 Cuddy — INTREPID or would like help answering any questions concerning purchasing, selling or chartering a yacht, please call +1(954)274-4435

# TABLE OF CONTENTS

TABLE OF CONTENTS	2
SPECIFICATIONS	5
Overview	5
Basic Information	5
Dimensions	5
Speed, Capacities and Weight	5
Accommodations	6
Hull and Deck Information	6
Engine Information	6
DETAILED INFORMATION	7
Colors	7
Transom/Cockpit	7
HARD TOP	7
Helm/Forward Seating	7
Bow	8
Cabin	8
Manufacturer Provided Description	8
Exclusions	9
Disclaimer	9
PHOTOS	10
Aft	10
Bow	10
Triple White 350 Verados	10
Stbd Still	10
Cockpit Seating Folded Up	10
Cockpit Seating Folded Down	10
Dive Door Closed	11
Dive Door Open	11

Live well and Aft Facing Seat	11
Cockpit Looking Forward	11
Port/Stbd Dive Tank Storage	11
Cockpit Camera	11
Helm Seating	12
Helm 1	12
Helm 2	12
Forward Seating	12
Forward Seating	12
Cabin Entrance	12
Cabin Entrance	13
Aft Berth	13
Galley 1	13
Galley 2	13
Head	14
Head to Port	14
Separate Shower	14
Cabin Forward	14
Dinette that converts to Berth	15
Cabin Looking Aft	15
Raymarine Electronics	15
Raymarine Electronics	15
Bilge	15
Magma Grill	15
Diesel Generator	16
<b>CONTACTS</b>	<b>17</b>
Contact details	17
Telephones	17
Office hours	17

---

Address

17

---

# SPECIFICATIONS

---

## Overview

---

Lowest-Priced Intrepid 400 Cuddy 2016 in the World

This Intrepid 400 Cuddy 2016 is the only one on the market with triple Mercury 350 Verados (290hrs). She is well-equipped for cruising, diving, and fishing South FL and the Bahamas, and has been lift-kept and captain-maintained since new by her single owner.

The price is right --- do not miss this deal.

Key Features Include:

- Fischer Panda Diesel Generator with 35hrs
- Swing-In Dive Door with Fold-Out Swim Ladder
- Fold-Down Cockpit Seating
- FLIR Nightvision
- SS Tow Package
- Bow Thruster and Windlass

DYSID:3197651

---

## Basic Information

---

**Category:** Center Console

**Model Year:** 2016

**Year Built:** 2016

**Country:** United States

---

## Dimensions

---

**LOA:** 40' 0" (12.19m)

**Beam:** 11' 1" (3.38m)

**Min Draft:** 2' 9" (0.84m)

---

## Speed, Capacities and Weight

---

**Displacement:** 16500 Pounds

**Water Capacity:** 50 Gallons

**Holding Tank:** 20 Gallons

**Fuel Capacity:** 400 Gallons

---

## Accommodations

---

**Total Cabins:** 1

**Total Berths:** 2

**Total Heads:** 1

---

## Hull and Deck Information

---

**Hull Material:** Fiberglass

---

## Engine Information

---

**Engines:** 2

**Manufacturer:** Mercury

**Model:** Verado 350

**Engine Type:** Outboard

**Fuel Type:** Gas/Petrol

---

## DETAILED INFORMATION

---

### Colors

---

- White Gelcoat
- Metallic Silver hullside Imron Painted
- Bright Blue Boot and Accent stripes Imron Painted

### Transom/Cockpit

---

- Triple Mercury 350 HP Verado 4-strokes with 290 Hours
- Triple Engine Flush Kit
- Transom Baitwell
- Fold-Down Cockpit Seating
- Swing-In Dive Door to Port with Fold-Down Swim Ladder
- Aft Facing Seating with Livewell Underneath
- Macerated Fishbox
- Recessed Dive Tank holders in deck
- Shore Power with Battery Charger and 50' Shore Cord
- Pressurized Fresh Water System
- Cockpit Coaming Bolsters
- Cockpit Lights
- Fischer Panda Diesel Generator
- (4) Rod Holders in Gunwhales
- Magma Grill
- JL Audio Speakers

### HARD TOP

---

- Fiberglass top with Powder Coated Aluminum white to match gelcoat
- 6 Rocket Launcher Rod Holders
- FLIR Nightvision Camera
- Raymarine Closed Array Radar
- Taco 15' Telescopic Outriggers
- 2 LED Spreader Lights on aft of top
- 3 side Poly Carbonate Enclosure
- Camera Overlooking Cockpit

### Helm/Forward Seating

---

- Upgraded Fiberglass Helm Seat
- Aft-facing seat to stbd with storage underneath
- Pull-out trash bin to port

#### Electronics:

- 2 x Raymarine Color Displays touch screen with GPS/Sounder
- Raymarine Auto Pilot
- Raymarine VHF
- Fusion MS - UD650 Stereo w/JL Audio Speakers
- Mercury digital display and throttles
- Bennett Trim Tab
- Richie Compass

#### Forward Seating:

- U-Shaped Seating to Stbd w/ pullout sundae
- Bench seat to port
- Removable Fiberglass Table
- In-Console Storage for Batteries and Wiring

---

## Bow

- SS Towing package
- Vetus Bow Thruster
- Windlass with SS Plough Anchor

---

## Cabin

- Full Berth Aft
- Air Conditioning in Cabin
- Electric Head W/Macerator for Holding tank
- Electric Valve for head to switch between fresh and raw water
- Enclosed Shower
- Galley with Microwave, Electric Cooktop, Isotherm Fridge/Freezer, and Sink
- Dinette Forward that Electrically Actuates to convert to Full Berth
- Hot Water Heater

---

## Manufacturer Provided Description

This sleek 40-foot cuddy offers all the enhanced accommodations you would expect in a luxury performance cruiser, including a private bath with shower stall and separate master berth with



queen bed and hullside windows. It also features a forward cabin section that easily converts to a large double berth.

As with every Intrepid, the most advanced design, technology and fabrication techniques deliver an incomparably smooth, dry ride with unparalleled performance. The ultimate blend of comfort and power has come together to create one of the most innovative boats on the water today. Whether fishing, diving or entertaining, this Intrepid is packed with thoughtful design features that will maximize enjoyment for anyone and everyone: a hullside dive door with step ladder and grab rails for divers and swimmers, custom seating and wet bar for easy entertaining, baitwells, rod holders, tank storage, tackle boxes, raw water washdown and more storage everywhere for the serious sport fisherman, customized the Intrepid way to suit your personal style.

## Exclusions

---

Owner's personal belongings.

## Disclaimer

---

The Company offers the details of this vessel or yacht in good faith but cannot guarantee or warrant the accuracy of this information nor warrant the condition of the vessel. A buyer should instruct his representatives, agents, or his surveyors, to investigate such details as the buyer desires validated. This vessel or yacht is offered subject to prior sale, price change, or withdrawal without notice.

# PHOTOS

**Aft**



**Bow**



**Stbd Still**



**Triple White 350 Verados**



**Cockpit Seating Folded Up**



**Cockpit Seating Folded Down**



**Dive Door Closed**



**Dive Door Open**



**Live well and Aft Facing Seat**



**Cockpit Looking Forward**



**Port/Stbd Dive Tank Storage**



**Cockpit Camera**



**Helm Seating**



**Helm 1**



**Helm 2**



**Forward Seating**



**Forward Seating**



**Cabin Entrance**



**Cabin Entrance**



**Aft Berth**



**Galley 1**



**Galley 2**



## Head

### Head to Port



### Separate Shower



### Cabin Forward



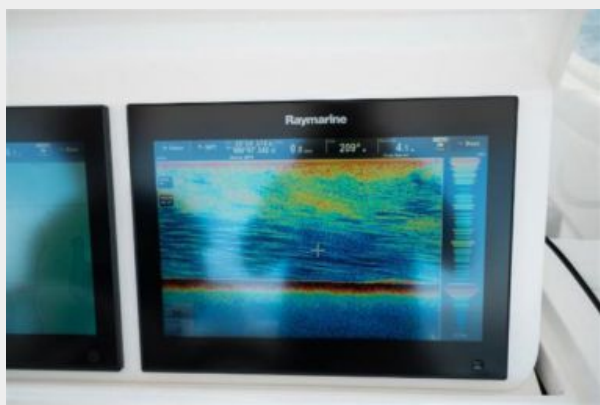
**Dinette that converts to Berth**



**Cabin Looking Aft**



**Raymarine Electronics**



**Raymarine Electronics**



**Bilge**



**Magma Grill**



## Diesel Generator





# CONTACTS

---

Andrey Shestakov, leading yacht broker of the sales department of Shestakov Yacht Sales Inc. Shestakov Yacht Sales Inc., the official representative of the Miami/Fort Lauderdale FL headquarters.

## Contact details

---

Email: [andrey@shestakovyachtsales.com](mailto:andrey@shestakovyachtsales.com)

Web: [shestakovyachtsales.com/en/](http://shestakovyachtsales.com/en/)

## Telephones

---

USA: +1(954)274-4435

## Office hours

---

Monday – Saturday: **9:00 - 21:00** EDT

Sunday: **closed**

## Address

---



Harbour Towne Marina, 850 NE 3rd St,  
STE 213, Dania, FL 33004