

AQUASITION — TRINITY



Судостроитель: TRINITY

Год постройки: 2010

Модель: Моторная яхта

Цена: **ЦЕНА ЯХТЫ ПО ЗАПРОСУ**

Местонахождение: United States

Длина общая: 142' 0" (43.28m)

Ширина: 27' 11" (8.51m)

Мин. осадка: 7' 11" (2.41m)

Крейс. скорость: 13 Kts. (15 MPH)

Макс. скорость: 18 Kts. (21 MPH)

Купить **AQUASITION — TRINITY** а также выбрать подходящую вам яхту из нашего каталога яхт вам поможет опытный яхтенный брокер Андрей Шестаков. На сегодняшний день компания **Shestakov Yacht Sales Inc.** имеет большое количество яхт в собственном списке продаж, а также тесно сотрудничает со всеми крупными яхтенными производителями по всему миру.

Для того чтобы купить яхту **AQUASITION — TRINITY** а также проконсультироваться по любому вопросу связанному с покупкой, продажей, чартером яхт позвоните по телефону **+7(918)465-66-44**.

ОГЛАВЛЕНИЕ

ОГЛАВЛЕНИЕ	2
ХАРАКТЕРИСТИКИ	5
Обзор	5
Основная информация	5
Размеры	5
Скорость, вместимость и масса	6
Размещение	6
Корпус и палуба	6
Информация о двигателе	6
ПОДРОБНОЕ ОПИСАНИЕ	7
Accommodations	7
Refit / Upgrades - 2018/20	7
Main Salon / Dining Area	7
Galley	8
Master Stateroom, On-Deck	9
(3) King Guest Staterooms, Lower Deck	9
Twin Guest Stateroom	9
Crew Quarters	10
Skylounge	10
Electronics & Pilothouse Equipment	11
Upper Aft Deck	11
Flybridge / Sundeck	12
Aft Deck	12
Deck Equipment	13
Electrical Equipment	13
Engine & Mechanical Equipment	13
Comments	14
Exclusions	14

Исключения	15
Отказ от ответственности	15
ФОТОГРАФИИ	16
Main Salon	16
Main Salon	16
Main Salon	16
Dining Area	16
Dining Area	16
Main Foyer	16
Galley	17
Pilothouse	17
Skyounge	17
Skyounge	17
Skyounge	17
Skyounge	17
Upper Aft Deck	18
Upper Aft Deck	18
Upper Aft Deck	18
Upper Aft Deck	18
Flybridge, Jacuzzi	18
Jacuzzi	18
Flybridge	19
Flybridge	19
Sundeck	19
Sundeck	19
Master Stateroom, On-Deck	19
Master Stateroom	19
Master Stateroom	20
Master Stateroom Study	20

Master His & Her Bath	20
Master His & Her Bath	20
Lower Companionway	20
King Guest Stateroom	20
Guest Bath	21
King Guest Stateroom	21
King Guest Stateroom	21
King Guest Stateroom	21
Twin Guest Stateroom	21
Aft Deck	21
Aft Deck	22
Aft Deck	22
Swim Platform	22
DJI_0011	22
Layout	22
КОНТАКТЫ	23
Контактная информация	23
Телефоны	23
Время работы	23
Адрес	23

ХАРАКТЕРИСТИКИ

Обзор

AQUASITION represents one of the finest ABS-classed Trinity's built to date and features a (5) stateroom layout with on-deck Master Stateroom, His & Her marble bath along w/ (3) King staterooms and twin below. Her elegant interior was designed by Evan Marshall and features rich cherry woods, marble and fine silk fabrics. In 2018, her interior was redone by Lauren Correll to include new furnishings, carpet and soft goods throughout. Powered by reliable Caterpillar C-32's, she cruises comfortably at 14 kts, with an 18 kt top end speed. Her 15,000 gallon fuel capacity provides for an extended range of 3000 miles. With brand new paint in 2017, new custom interior and A/V equipment in 2018 makes AQUASITION a truly turn-key Tri-Deck Motoryacht in flawless condition! RECENT \$1M PRICE REDUCTION

Основная информация

Тип судна: Моторная яхта

Модельный год: 2010

Год постройки: 2010

Год обновления: 2017

Вид обновления: Full paint job, new interior

Страна: United States

Верх: Hardtop

Открытая палуба мостика: Да

Размеры

Длина общая: 142' 0" (43.28m)

Ширина: 27' 11" (8.51m)

Мин. осадка: 7' 11" (2.41m)

Длина привального бруса: 142' 0" (43.28m)

Скорость, вместимость и масса

Крейс. скорость: 13 Kts. (15 MPH)

Макс. скорость: 18 Kts. (21 MPH)

Водоизмещение: 793664 Pounds

Чистый вес: 399 Pounds

Вместимость воды: 2450 Gallons

Объем топливного бака: 11524 Gallons

Размещение

Всего кают: 5

Спальные места: 10

Каюты экипажа: 5

Спальных мест экипажа: 10

Корпус и палуба

Материал корпуса: Aluminum

Материал палубы: Teak

Дизайнер корпуса: Trinity

Дизайнер экстерьера: Trinity

Дизайнер интерьера: Evan Marshall

Информация о двигателе

Двигатели: 2

Производитель: Caterpillar

Модель: C-32A

Тип двигателя: Inboard

Тип топлива: Diesel

ПОДРОБНОЕ ОПИСАНИЕ

Accommodations

AQUASITION was built for a knowledgeable yachting connoisseur. The attention to detail and subsequent maintenance and recent refit improvements are spectacular. This is a remarkable yacht offering elegance, yet comfortable, spacious accommodations and desirable layout for both family cruising and charter. Her layout features five staterooms for up to ten guests plus five in crew quarters. Her spectacular interior features cherry wood joinery with maple burle inserts throughout. Her interior decor has been completely redone in 2018 by Architectural Interiors with new furnishings, decorative lighting and LED recessed lights throughout, updated audio/video system, new carpeting, window treatments, new fabrics and soft goods throughout. In addition, new exterior teak furnishings, new upholstered cushions throughout and new Tucci sunshades installed.

Refit / Upgrades - 2018/20

- Complete ABS 10-Year Survey / Reclassification (6/20)
- Complete bottom job (6/20)
- New custom interior throughout by Architectural Interiors
- New salon & skylounge furnishings
- New soft goods throughout to include fabrics, bedding, lighting & TV's in all staterooms
- All next exterior cushions & sunpads
- New davit for waverunners
- New KitchenAid convection ovens & freezer
- New Samsung LED HD TV's throughout & distribution system upgraded to 4K
- New stabilized HD Intellian S80 TVRO dome antenna
- A/V systems has been completely updated w/highest quality components
- Communications upgraded allowing bonding of (2) 4G cell receivers for cost effective internet
- New (2) Yamaha 1010CC Waverunners
- New LED lighting throughout vessel
- All new sanded decks (10/19)
- New Quartz stone top for flybridge bar ('19)

Main Salon / Dining Area

- Interior refit throughout by Architectural Interiors in 2018
- (2) Ferrel Mittman upholstered sectional sofas
- Custom cherry wood cocktail table
- New Linen & Viscose carpeting

- Cherry & maple entertainment w/new Samsung LED 55" TV & audio
- New crystal chandelier by Neirman Weeks
- Custom overhead w/silverleaf
- (2) Built-in cherry w/maple burl buffets w/ marble tops, storage below, port & starboard aft
- Full glass, floor to ceiling, sliding electric doors aft w/drapes, aft
- (4) Custom decorative wall sconces
- (2) Decorative mirrors, port & starboard aft
- Marble flooring at aft entryway
- Built-in cherry wood w/maple burle side cabinetry w/marble tops, port & starboard, w/custom storage below
- Built-in cherry w/maple burle buffet/cabinetry w/marble top, centerline, dividing salon and formal dining area w/lofted storage
- Custom Majilite finesse padded panel headliner throughout
- Custom teak dining table w/intricate marquetry inlays
- (8) New custom upholstered dining chairs
- New overhead soffit in custom silver leaf w/crystal chandelier
- Built-in cherry w/mahogany inserts side buffets, port & starboard, w/custom lofted storage
- Custom artwork w/lighting on forward bulkhead
- (2) Custom decorative wall sconces, port & starboard
- New LED lighting throughout
- Main Foyer/Entryway:
 - Marble flooring
 - Side entry doors, port & starboard
 - Day head w/marble vanity, decorative sink & gold plated fixtures
 - Stairwells w/custom iron rails, up to skylounge and down to guest accommodations

Galley

- Double Delfield refrigerator/freezers
- Industrial Panasonic microwave
- Wolf induction 6-burner cooktop
- Wolf induction 2-burner cooktop
- (2) KitchenAid convection ovens ('18)
- Undercounter mini freezer ('18)
- (2) Miele dishwashers
- Vulcan Salamander Industrial broiler
- Sub-Zero wine cooler
- Scotsman icemaker
- (2) Insinkerator garbage disposals
- Center island w/granite top & stainless steel sink
- KitchenAid trash compactor
- Granite tops throughout
- Walk-in pantry
- Insignia 30" TV w/Direct TV & CCTV

Master Stateroom, On-Deck

- All new soft goods, 2018
- King berth w/tufted linen headboard/bulkhead by George Spensor
- New custom bedding & embroidered fine linen by Hamburg House
- (2) Built-in cherry w/maple burle nightstands w/marble top & lamps & mirrored wall panels
- Built-in cherry w/maple burle dressers, port & starboard
- Built-in cherry w/maple burle vanity w/ upholstered bench seat, port
- Cherry w/maple burle entertainment center aft w/new 55" HD TV
- New Fabrica carpeting
- New upholstered wallcoverings by George Spensor England
- New window treatments by Nancy Corzine w/swags
- Custom overhead soffit w/silverleaf, LED & indirect rope lighting
- Walk-in, aromatic cedar lined closets w/double doors
- Radius double door entryway to master w/study area
- Built-in cherry w/maple burle desk w/drawers, marble borders & chair
- (2) Custom upholstered Nancy Corzine chairs & cherry tableHis & Her Bath:
- Cherry w/maple burle vanities w/ marble surfaces
- (2) Custom decorative sinks w/gold plated fixtures
- Custom decorative gold framed mirrors
- Marble shower w/seamless glass enclosure, built-in seat & custom light
- Marble Jacuzzi tub w/built-in shelving & gold plated fixtures
- (2) Water closets, port & stbd

(3) King Guest Staterooms, Lower Deck

- King berths w/custom bedding & custom embroidered fine linens by Hamburg House
- New custom window treatment w/shades & swags
- (2) Built-in cherry/maple burle nightstands w/marble surface & reading lamps
- (2) Mirrored wall panels, port & starboard
- Built-in cherry w/maple burle dresser drawers
- Built-in vanity w/mirror, bench seat & cabinets above
- Entertainment center aft w/Samsung 24" TV, Pioneer DVD
- Aromatic cedar-lined closets Private Baths:
- Cherry vanities w/marble surfaces
- Custom decorative vanity w/sink & gold plated fixtures
- Seamless glass enclosed shower w/tub & gold plated fixtures
- Custom wallcoverings

Twin Guest Stateroom

- All soft goods new 2018

- Twin berths w/custom bedding & embroidered fine linens
 - New Cortina tufted leather padding around berths
 - Built-in cherry w/maple burle nightstand w/marble top & decorative reading lamp
 - (2) Decorative starburst mirrors
 - Custom linen wallcovering
 - Built-in cherry w/maple burle vanity w/marble surface & bench seat
 - Samsung 24" LED TV, aft
 - Cedar-lined hanging closet
 - Private bath w/marble top vanity, mirror, decorative sink, gold plated fixtures, seamless glass enclosed shower & custom fixtures
- Lower Companionway / Foyer:
- Miele full size washer/dryer
 - Sub-Zero undercounter refrigerator
 - Sub-Zero undercounter freezer
 - Art niche w/ marble surface, custom paint w/lighting & cabinets below
 - New LED recessed & indirect rope lighting
 - Decorative framed full length mirror on forward bulkhead
 - Marble flooring

Crew Quarters

- Captain's cabin w/queen berth & upholstered headboard, Samsung 20" TV, Pioneer DVD, hanging locker, B&G wind/speed/depth display, private bath w/shower
- (3) Crew cabins w/over & unders berths for (6) crew, ensuite heads
- Engineer cabin located aft w/double berth for (2)
- Office to port
- Security camera controls
- (2) Miele washers & dryers
- Oversized upholstered crew dinette w/corion table
- Undercounter Sub-Zero refrigerator
- Whirlpool microwave
- Samsung 40" TV
- Neovo 20" camera/monitoring system w/ 5 cameras
- Standard Horizon VHF
- Amtico flooring

Skylounge

- New Century and Ferrel Mittman upholstered sofa & (2) sitting chairs
- New cherry w/maple round game table & (4) upholstered chairs
- New custom Zebrawood cocktail table/ottoman by Emanuel Morez
- New grass cloth wallcoverings
- New Edelman Cow Hidde w/hair overhead panels

- New Ironies Penshell occasional table
- New custom bar front in tufted leather by Jerry Pair
- Custom cherry w/mahogany bar w/ new onyx surface, hammered gold sink, Sherrill Wagner fixture & marble flooring
- (3) New upholstered hi-back bar stools
- Beveled mirrored bulkhead behind bar w/custom plexi-glass lofted bottle storage
- Sub-Zero wine cooler, Marvel refrigerator & Hoshizak icemaker
- Built-in Sony 55" LED TV
- New wall mirrors installed
- New indirect lighting w/ (2) tortoise shell wall hangings
- Custom Fabrica carpeting
- New custom Austrian swag window treatments
- Wall to wall, floor to ceiling, double glass electric sliding doors w/privacy drapes to upper aft deck
- Day Head:
- Starboard side of skylounge w/marble vanity, mirror, decorative sink, gold plated fixtures

Electronics & Pilothouse Equipment

- Furuno 2137 Band 120-mile Radar
- Furuno XBand 2127 120-mile Radar
- (2) Furuno AIS GP90 MX420 GPS
- Furuno NX 700P Navtex
- C-Plath Navipilot 4000 autopilot
- C-Plath Navigat X MKII STD 22 Gyro
- C-Plath magnetic compass
- Furuno PB100 echo sounder
- Transas chart plotter
- B&G wind / log
- Seatel 4006 VSat SatCom Sailor Fleet One voice
- Furuno 8800S VHF w/weather station sensor
- Furuno FS1570 SSB
- Furuno NX 700P receiver
- Ericson GSM cellular w/power max DA4100
- (2) Adjustable leather helm chairs
- Leather settee w/corrian table
- Custom recessed overhead w/ world map & lighting

Upper Aft Deck

- New Quartzite surfaces & countertops
- All exterior cushions reupholstered
- New Samsung waterproof LED TV

- High gloss teak round dining table w/ (10) outdoor woven wicker dining chairs w/cushions
- (4) Outdoor woven wicker chairs w/cushions & ottomans
- Outdoor woven wicker sectional settee w/cushions, aft
- Oval high gloss teak cocktail table w/stainless steel pedestal
- (2) Teak round end tables
- Overhead recessed LED lighting
- Stereo speakers
- Teak decks
- Spiral stairway to upper sun deck
- Stairwell down to main aft deck
- Double sliding glass doors to skylounge

Flybridge / Sundeck

- New teak settee w/cushions, aft
- (2) New teak swivel chairs w/cushions
- (2) New teak chairs w/cushions & ottomans
- Teak oval cocktail table & (4) teak round end tables
- New 8' Tucci umbrellas
- New outdoor area rug, aft
- (3) New chaise sunlounges w/cushions
- Jacuzzi tub 8-person w/ teak steps & cover, forward centerline
- New 6' sunpads, built-in each side of Jacuzzi, port & stbd
- Bar w/new Quartzite stone top, icemaker, refrigerator, sink & storage cabinets
- (6) Adjustable bar stools w/new upholstered cushions & stainless pedestal & footrest
- New Samsung LED TV
- Built-in settee w/cushions & teak dining table
- Stainless steel hoop rails, around aft perimeter
- Stainless steel guard rails w/safety glass, around perimeter forward
- Day head w/new Quartzite stone vanity, sink & mirror
- Teak decking
- (2) New 2018 Yamaha waverunners
- Spiral stairway down to skylounge deck

Aft Deck

- Custom high gloss teak table w/ inlay
- (6) Woven wicker chairs w/cushions
- Built-in bench seating w/new cushions
- All new Quartzite stone surfaces
- New upholstered cushions
- Stairway up to sundeck

- Double glass sliding doors to main salon
- Teak decking
- Dual stairways down to swim platform w/teak steps & stainless hand rail
- Teak swim platform w/ (4) stainless steel hoop rails
- New carbon fiber davit on swim platform for waverunners
- Watertight access door to lazarette and engine room

Deck Equipment

- Nautical Structure EZ 3500lb crane, telescopes to 21
- (2) Muir VC4000 hydraulic aft warping capstans
- (2) 450lb anchors w/5/8" galvanized chains, 450' per side
- Marquipt 20' hydraulic passerelle
- (2) Marquipt 9-step side boarding ladders
- (2) ACR RCL 1000 searchlights
- Carbon fiber davit 500kg
- (4) Viking 20-person life rafts
- Teak decks
- Teak swim platform w/new carbon fiber davit or waverunners
- All exterior cushions
- Access to Portuguese deck w/ new upholstered settee

Electrical Equipment

- Twin Kilopack 99KW Generators, 1800 RPM's (Port: 15,914 hrs / Stbd: 15,099 Hrs)
- Racor fuel filters for gens
- 3-Phase 208v-phase shore power
- Atlas shore power system
- AMG Odyssey PC 1800 marine batteries
- (10) 12v Odyssey main batteries
- (4) Mastervolt 24/50 battery chargers
- (2) Mastervolt 24/100 battery chargers
- Panasonic Pelco CCTV security system

Engine & Mechanical Equipment

- Twin Caterpillar C32A, 1800 HP @ 2300 RPM's
- Marine Air chilled water system, (3) compressors, 36-tons
- (2) FCI watermakers
- (2) Reintjes WAF542 gear boxes
- Quantum QT120 120HP hydraulic bow thruster

- Quantum QC-1500 zero-speed stabilizers
- Triple Racor 1000 fuel filters for main engines
- Cat Spin on secondary filters
- Alfa Laval fuel separator
- Boss oil/water separator
- EMI electric steering system
- (2) Nibral 5-bladed props
- Aquatech 22 prop shafts
- Headhunter / Edson sewage treatment system
- Fixed fire suppression, (3) CO2 282lb
- Kidde dry chemical extinguishers throughout
- Auxillary fire pump system, 208v primary
- Walker Air Seps
- Twin water cooled turbo chargers
- Raw water cooled after coolers
- Delta T blower
- Freshwater engine cooling system
- Raw water sea strainers
- Dripless seal stuff box
- (3) Sump bilge pumps 208v electric/auto
- (2) Air compressors

Comments

AQUASITION represents one of the finest Trinity's built to ABS, Maltese Cross 100-A1 and AMS classifications. The attention was given to every detail, subsequent maintenance and recent refit improvements make this 142' Trinity truly in turn-key condition. Her layout features five staterooms for up to ten guests with on-deck Master, (3) King guests and twin stateroom, plus five in crew quarters. Her interior decor has been completely redone in 2018 by Architectural Interiors with new furnishings, new LED recessed lighting, updated audio/video system to include all new LED TV's throughout, new carpeting and window treatments, new upholstery and soft goods throughout. Also, all new exterior teak furnishings, new cushions throughout and Tucci sunshades. Powered by reliable Caterpillar C-32's, she cruises comfortable at 14 knots with an 18 knot top end speed. Her 15,000 gallon fuel capacity provides for extended range of 3000 miles. With new paint job in 2017 along with interior refit in 2018, and ABS 10-year re-certification in June 2020, AQUASITION is in flawless condition!

Exclusions

- All owner's & crew personal items
- The 'Aquasition' name

Исключения

При продаже яхты исключаются личные вещи владельца.

Отказ от ответственности

Компания предоставляет описание судна или яхты добросовестно, но не может гарантировать точность этой информации, а также не ручается за техническое состояние. Покупатель должен проинструктировать своих агентов или оценщиков исследовать представленную информацию более подробно, по собственному желанию. Продажа судна или яхты, изменение цены или снятие с продажи будет происходить без предварительного уведомления.

ФОТОГРАФИИ

Main Salon



Main Salon



Main Salon



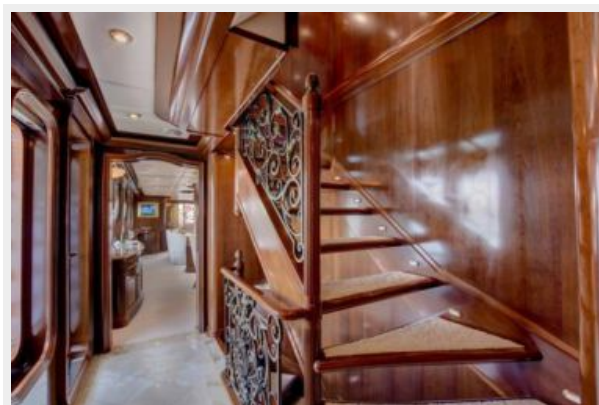
Dining Area



Dining Area



Main Foyer



Galley



Pilothouse



Skylounge



Skylounge



Skylounge



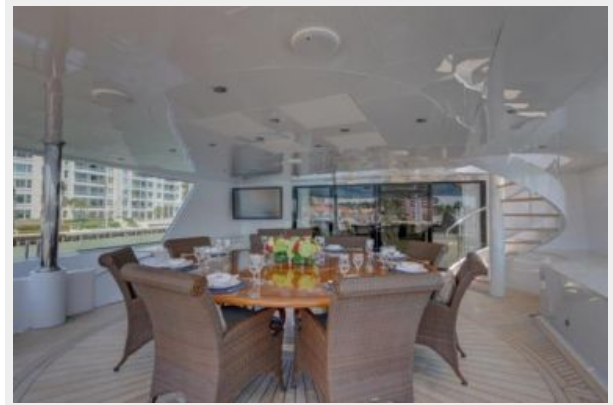
Skylounge



Upper Aft Deck



Upper Aft Deck



Upper Aft Deck



Upper Aft Deck



Flybridge, Jacuzzi



Jacuzzi



Flybridge



Flybridge



Sundeck



Sundeck



Master Stateroom, On-Deck



Master Stateroom



Master Stateroom



Master Stateroom Study



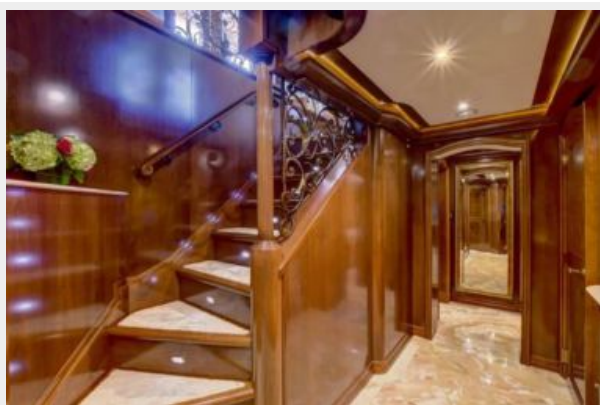
Master His & Her Bath



Master His & Her Bath



Lower Companionway



King Guest Stateroom



Guest Bath



King Guest Stateroom



King Guest Stateroom



King Guest Stateroom



Twin Guest Stateroom



Aft Deck



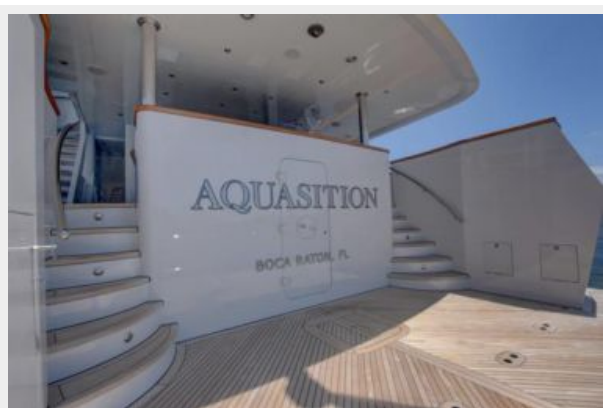
Aft Deck



Aft Deck



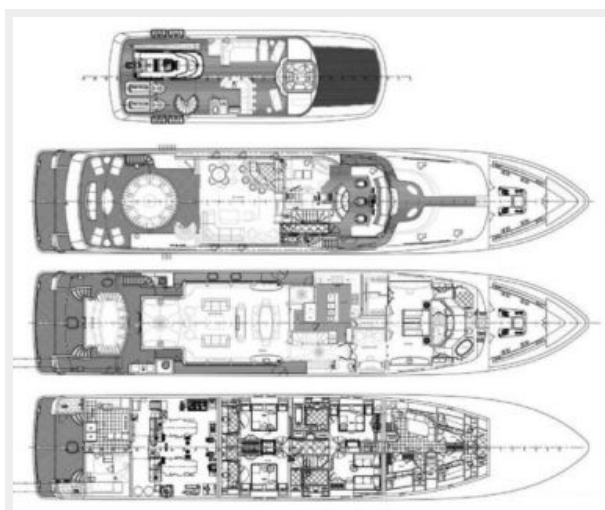
Swim Platform



DJI_0011



Layout



КОНТАКТЫ

Андрей Шестаков (Andrey Shestakov) – ведущий яхтенный брокер отдела продаж яхт и судов компании Shestakov Yacht Sales Inc. Официальный представитель Shestakov Yacht Sales Inc. для русскоговорящих клиентов в центральном офисе компании в Майами/Форт Лодердейл/Флорида/США.

Контактная информация

Email: andrey@shestakovyachtsales.com

Web: shestakovyachtsales.com

Телефоны

Краснодарский край: **+7(918)465-66-44**

США, Майами, Флорида: **+1(954)274-4435**

Время работы

Понедельник – Суббота: **9:00 - 21:00**
EDT

Воскресенье: **Закрето**

Адрес



Harbour Towne Marina, 850 NE 3rd St,
STE 213, Dania, FL 33004