

SI VIS PACEM — SOUTHERN WIND SHIPYARDS



Судостроитель:
SOUTHERN WIND SHIPYARDS

Год постройки: 2005

Цена: ЦЕНА ЯХТЫ ПО ЗАПРОСУ

Местонахождение: Italy

Длина общая: 78' 9" (24.00m)

Ширина: 19' 5" (5.90m)

Мин. осадка: 12' 6" (3.80m)

Купить **SI VIS PACEM — SOUTHERN WIND SHIPYARDS** а также выбрать подходящую вам яхту из нашего каталога яхт вам поможет опытный яхтенный брокер Андрей Шестаков. На сегодняшний день компания **Shestakov Yacht Sales Inc.** имеет большое количество яхт в собственном списке продаж, а также тесно сотрудничает со всеми крупными яхтенными производителями по всему миру. Для того чтобы купить яхту **SI VIS PACEM — SOUTHERN WIND SHIPYARDS** а также проконсультироваться по любому вопросу связанному с покупкой, продажей, чартером яхт позвоните по телефону **+7(918)465-66-44**.

ОГЛАВЛЕНИЕ

ОГЛАВЛЕНИЕ	2
ХАРАКТЕРИСТИКИ	3
Основная информация	3
Размеры	3
Скорость, вместимость и масса	3
Размещение	3
Корпус и палуба	3
Информация о двигателе	4
ПОДРОБНОЕ ОПИСАНИЕ	5
DETAILED SPECIFICATIONS	5
Исключения	22
Отказ от ответственности	22
ФОТОГРАФИИ	23
КОНТАКТЫ	27
Контактная информация	27
Телефоны	27
Время работы	27
Адрес	27

ХАРАКТЕРИСТИКИ

Основная информация

Подкатегория: Представительская парусная яхта

Модельный год: 2005

Год постройки: 2005

Страна: Italy

Размеры

Длина общая: 78' 9" (24.00m)

Длина по ватерлинии: 67' 4" (20.51m)

Ширина: 19' 5" (5.90m)

Мин. осадка: 12' 6" (3.80m)

Скорость, вместимость и масса

Водоизмещение: 79366.41432 Pounds

Вместимость воды: 319.64818292 Gallons

Объем топливного бака: 2299.881884712 Gallons

Размещение

Всего кают: 3

Спальные места: 6

Спальных мест экипажа: 3

Корпус и палуба

Материал корпуса: Carbon Composite

Дизайнер корпуса: Bruce Farr

Информация о двигателе

Двигатели: 1

Производитель: Yanmar

Модель: 4LHA-STP

ПОДРОБНОЕ ОПИСАНИЕ

DETAILED SPECIFICATIONS

1. MAIN CHARACTERISTICS

TYPE	Sailing Yacht
MODEL	Farr Nauta 80DS –Performing Cruising yacht
BUILDER	Southern Wind
NAVAL ARCHITECT	Bruce Farr
YEAR	2005
REFIT	2018
CLASSIFICATION	MCA LY2 (SCV) Certification
CONSTRUCTION	Carbon Composite hull
FLAG	UK
ENGINE	1 x Yanmar 4LHA-STP
DISPLACEMENT	36.4 tons
CREW	Up to 3
HULL PAINT	Awlgrip Flag Blue hull; Matterhorn white stripes repainted (2013) Transom and toe rail painted Flag blue (2017) Antifouled International micron 77 Black (2018)

2. DIMENSIONS

LOA	24.00m / 78'8"
LWL	20.51m / 67'3"
BEAM	5.90m / 19'4"
DRAFT	3.80m / 12'5"
AIR DRAFT	35.10m / 115'1"

3. CAPACITIES

ACCOMMODATION	6 x Guests in 3 cabins 2 x Pullman berths suitable for children only
CREW	Up to 3 x Crew
FUEL	2,300 litres / 607 US gallons 100 litre gravity feed day tank w/G&R transfer pump
FRESH WATER	1,210 litres / 319 US gallons in 2 composite tanks w/internal wash baffles
GREY WATER	200 litres / 52 US gallons in 1 composite tank/ 4 sumps
BLACK WATER	318 litres / 84 US gallons 2 composite tanks

4. CONSTRUCTION

HULL

- Hull is built on a male mould in advanced composite sandwich construction (wet lay-up, vacuum bagged, and post-curing techniques)
- Materials used: SP Ampreg 22 Epoxy resins, Corecell foam, carbon fibres, Kevlar and e-glass
- 11 x Structural transverse bulkheads / frames

DECK

- Deck is built on a female mould in advanced composite sandwich construction (wet lay-up, vacuum bagged, and post-curing techniques)
- Materials used: SP Ampreg 22 Epoxy resins, Klegecell foam, carbon fibres

KEEL AND BULB

- Fin weight is 3,119 kg, according to designer specifications in ASTM A536 8055-05
- Bulb weight is 10,322 kg, according to designer specifications

RUDDER

- Rudder Stock and blade in SP SE84 pre-preg system
- Rectangular rudder stock section tapering in laminate and geometry, top & Bottom

FINISHING

- Acrylic top coating for transom and deck superstructure
- Awlgrip two-component polyurethane paint, blue colour for the hull, Matterhorn white for deck

TEAK DECK

- Deck, sun-beds area, side deck, seats and cockpit soles finished in teak wood planks

DECK FITTINGS

- Stainless steel custom fittings made by Southern Wind Shipyard in accordance with drawings

5. ACCOMMODATION

Guests are particularly attracted to the yacht by the interior layout, a large cabin forward and the two guest cabins amidships – maximising the beam of the yacht for space and location in the middle of the yacht for comfort at sea.

The two guest cabins aft both with en-suite are another plus due to the fact that the guests in these two cabins have identical accommodation.

The separate crew area means that the crew have real opportunities to relax and rest – something not often found on a yacht of this size.

FORWARD CABIN

- Walk around double bed, with lee cloths and facility for central lee cloth
- Custom made natural fibre mattress by the Naturalmat Company
- 2 x Large hull windows port and starboard with blinds
- HEOS Bluetooth stereo system
- Settee on starboard side, below window

- Dressing table to forward and port
- 2 x Large hatches with Oceanair Blinds
- B&G FFD mounted into joinery
- Safe
- Bookshelves, port and starboard above windows
- European style power points
- Frigomar air-conditioning controller to twin fan coils

HEADS

- Large heads and shower compartment
- Tecma fresh water flush toilet and bidet
- Separate shower stand with Perspex panel. Vola shower fittings
- Avonite sink with teak varnished wash tops
- Large hatch for ventilation with Oceanair blinds
- European style power point

LOWER SALOON

- Seating area to port
- Bookshelves to port
- Denon smart stereo system giving 5.1 surround sound in the upper saloon and to both TVs
- Bar fridge
- Leather covered seats
- Samsug LCD Flatscreen TV linked to 3 x Sennheiser wireless headphones and Play station 4
- To starboard, storage for crockery, glasses, serving plates, place mats and other domestic items
- Set of 12 dinner plates, side plates and bowls
- European style power points
- Frigomar air-conditioning controller to single fan coil

UPPER SALOON

- Varnished teak table to port, with seating on three sides and a pull out style bench seat on the fourth
- Silvertex covered seats, with crew covers
- To starboard, coffee table and two seats, facing fore and aft
- Samsung LCD Flatscreen TV
- 2 x Hatches fitted with Oceanair blinds
- Curtains
- 1 x 5 teak steps fitted with non-slip leading to forward cockpit
- B&G Hydra 3000 Display

- Bookshelf
- European Power points
- Frigomar air-conditioning controller to twin fan coils

AFT CORRIDOR

- Corridor with lighting running aft to galley and crew area
- Prism installed in deck head for further natural light
- Under floor freezer
- Storage lockers located port and starboard
- Door at aft end leading to galley

STARBOARD GUEST CABIN

- Twin single beds
- Custom made natural fibre mattresses by the Naturalmat Company
- Fittings for removable Pullman style bunk
- Abundance of overhead, under bed and locker storage
- Large hull window with blind

HEADS

- Separate heads: Tecma fresh water flush toilet
- Avonite sink with teak varnished washtops
- Extractor fan
- Prism installed in deck head for further natural light
- Separate shower stool with Vola shower fittings
- European power points
- Frigomar air-conditioning controller to single fan coil

PORT GUEST CABIN

- Twin single beds
- Custom made natural fibre mattresses by the Naturalmat Company Fittings for removable Pullman style bunk
- Abundance of overhead, under bed and locker storage
- Large hull window with blind

HEADS

- Separate heads: Tecma fresh water flush toilet
- Avonite sink with teak varnished wash tops
- Extractor fan
- Prism installed in deck head for further natural light
- Separate shower stool with Vola shower fittings
- European power points
- Frigomar air-conditioning controller to single fan coil

PORT CREW CABIN

- Twin lower and upper bunks
- Custom made natural fibre mattresses by the Naturalmat Company
- B&G FFD
- Storage in lockers, drawers and shelves
- Frigomar air-conditioning controller to single fan coil

HEADS

- Split into two separate compartments with connecting door
- Fwd compartment: Tecma fresh water flush head
- Vola shower fittings (wet head)
- Aft compartment: Avonite sink with teak varnished washtops
- Mirror with storage cupboard behind

STARBOARD CREW CABIN

- Twin lower and upper bunks
- Custom made natural fibre mattresses by the Naturalmat Company
- Access to Siemens washing machine
- Storage in lockers, drawers and shelves
- Frigomar air-conditioning controller to single fan coil

COCKPIT

- Teak with integral Frigoboat DC powered fridge, capacity for approx 20 x wine bottles and approx 70 x 330ml beverage cans
- Comfortable dining for 6 persons in standard configuration or up to 10 pax w/ extention deployed
- Cockpit fully cushioned in dark blue towelling type cushions
- Variety of scatter cushions in red and white
- Bridge deck offering large sunbathing area with large cushions

LAZARETTE

- Housing steering quadrant, Simrad autopilot with Meridian Hydraulics, Angelo Gandola passarelle and hydraulic motor
- Shore power receptacles – 2 x 50amp.
- Gas locker: (in Lazarette) Storage for 3 x 9kg Propane Gas Bottles

6. MECHANICAL EQUIPMENT

ENGINE	1 x Yanmar 4LHA-STP continuous rating output at crankshaft: 177 kW (240hp) @ 3,300rpm
ENGINE HOURS	9,428 hours as of 10th of September 2018
GEARBOX	Hurth ZF80A

PROPELLERS	1 x Brunton - 4 blade folding propeller Varifold- with rope cutter. Major overhaul May 2012/ 6,338Hrs
GENERATORS	1 x 17.5 kW Onan MDKBE c/w PTO pump Major overhaul including new sound deadening November 2010/ 6,905 hours Major service Feb 2013/ 8,550 hours 1 x Onan MDKBM (New September 2012) Bearings changed and coolant system flush 2018
GENERATOR HOURS	As of the 10th of September 2018 17kW : 9,919 hours 10kW: 6,981.9 hours
HYDAULICS	Meridian, 3 x DC pumps and PTO pump driven by large generator. Servicing winches, windlass and transom door (autopilot on separate system). (Tank stripped and serviced 2013)
BATTERY CHARGERS	3 x Victron Combi Charger/ Inverters Multi Plus 24volt 70amp (new 2009)
BATTERY INVERTER	1 x Mastervolt 24v 5000W (for dish washer, cooker washing machine, icemaker, & microwave only) (located in upper saloon)
AIR CONDITIONING	2 x Frigomar chillers (new 2013) 2 x Fan coils for chilling engine room (new 2011). Refrigeration: 2 sets of AC and DC compressors: Set 1: Servicing Galley Fridge and Floor Freezer Set 2: Servicing Galley Freezer and Saloon Fridge Total BTU 64,800, with reversible Summer-Winter cycle Fan coils for each compartment Condensation draining in grey sumps
FRESH WATER SYSTEM	2 x G&R Fresh Water pumps (220V, 24v) as backup
HOT WATER HEATER	1 x 65 litres Torrid horizontal
TOILET SYSTEM	Tecma
WATER MAKER 1	24v Spectra Newport 1000, providing approx 140 litres/ hour, located in sail locker Remote MPC 5000 controller at nav table, 2865 Hours (rebuilt 2013)
WATER MAKER 2	Tecnicomar 220v providing approx 230 litres/ hour Approx 825 hours (new membranes 2011)

FUEL 100 litres gravity feed day tank with G&R transfer pump

PUMPS Variety of grey (Feit), black (G&R) and bilge water (G&R and Jabsco) pumps, oil transfer pump permanently plumbed into all three engines

7. SAILS & RIGGING

SAIL WARDROBE North Sails NPL Tour UltraXC Nor Lam

SAIL AREA 320 sqm (Mainsail + Genoa106%)

SAIL INVENTORY

FULL BATTEN MAIN SAIL North Sails NPL Tour UltraXC Nor Lam 183.4m2

HEAD SAIL North Sails NPL Tour UltraXC Nor Lam 136.9m2

ASYMMETRIC SPINNAKER Red with snuffer - Quantum

ASYMMETRIC SPINNAKER 30% smaller than above, red with snuffer - Quantum (New 2007)

STAYSAIL Spectra - Quantum

STORM STAYSAIL In Orange- Quantum
Mast Ultrasound tested 2011 and 2013
Full 6 year survey 2018

RIG Three Spreader rig, swept back 20 degrees

MAST Southern Spars carbon mast

BOOM Park Avenue

SPINNAKER POLE Park Avenue & spinnaker pole painted in Matterhorn White

RIGGING Navtec Rod rigging (new 2011) NDT 2013, surveyed 2018

RUNNING RIGGING All new 2018, except for Kite sheets and guys

FURLER Reckmann Hydraulic Furling Head Stay with RTA (overhauled by Reckmann 2018)

WINCHES & DECK GEAR Harken self-tailing winches with aluminium drum.
2 x Hydraulic Harken 74-3 halyard winches
2 x Manual Harken 66-3 reefing pennant winches
2 x Hydraulic Harken 1110-3 primary winches
2 x Manual Harken 980-3 runner winches
1 x Hydraulic Harken 980-3 mainsheet winch
1 x Manual Harken 56-2 traveller winch (removed 2012, but still on board in spares)

B&G Forward cockpit: 2 x 20/20
Aft cockpit: 2 x 20/20, 2 x FFD, 1 x Wind

8. NAVIGATION EQUIPMENT

ENGINE CONTROLS	Next to and below starboard pedestal w/ stainless steel panel Ignition on/ off, Start, Stop and Alarm Mute. Instruments for Revs/ hours, oil pressure, water temperature and alarm lights
NAVIGATION COMPUTER	PC, integrated into Navnet and all instruments
CHARTPLOTTER	2 x Raymarine (chart table and pedestal new 2018)
AIS	Comar CSB 200, with individual VHF Antenna, mounted on starboard lower spreader
GPS	Furuno DGPS GP-37 antenna mounted on pushpit
NAVTEX	Furuno NX-300 antenna mounted on pushpit
MONITORING	Digital tank monitoring system
IT	Wifi system for BGAN Wifi Antenna – Yachtspot, mounted on port lower spreader Wifi system for shore WiFi
OFFICE EQUIPMENT	Wireless operated printer, scanner and copier
MISCELLANEOUS	3 x Bookshelves Nav Table Weems & Plath ship's clock and barometer Navigation table suitably sized for a paper Admiralty chart Various circuit breakers, switches and controls for systems recessed into brushed stainless facia
STEERING PEDESTAL	Port pedestal - housing cables with a stainless and teak and holly varnished wheel Raymarine chart plotter 2018 B&G remote button for 20/20 control Stainless steel grabrail w/ 2 x holders for mugs/ bottles
STARBOARD PEDESTAL	Housing cables with a stainless and teak and holly varnished wheel Anodised aluminium panel housing Simrad Autopilot AP20 control, Switches for on deck lights and navigation lights. Additional switches for Large Generator on/ off, PTO on/ off, Transom Door up/ down. Separate joystick style control for Maxpower retractable bow thruster (Model R300/21).

	Icom VHF Command B&G remote button for 20/20 control
	Stainless steel grabrail w/ 2 x holders for mugs/ bottles
WINDINSTRUMENTS	B&Gs Forward cockpit: 2 x 20/20 Aft cockpit: 2 x 20/20, 2 x FFD, 1 x Wind
OTHER	B&G Instruments
9. COMMUNICATION EQUIPMENT	
SATCOM	Thrane & Thrane Sat C terminal (linked to PC), antenna mounted on pushpit
SATCOM	SAT C Simrad BGAN 250 Fleet Broadband, mounted on port lower spreader
VHF	Icom IC M601
ICOM	VHF & SSB 3 x Icom handheld VHF's Icom IC-M802 VHF, with on deck hand mic Icom IC-M601 SSB (insulated backstay)
FLEET	BGAN Fleet 250 Handset
IRIDIUM	Iridium Handset
EPIRB	McMurdo G4 GPS with removable on deck hydrostatic release
SART	ACR Pathfinder 3
10. DECK EQUIPMENT	
AFT WARPING CAPSTANS	Flush mounted/ retractable electric warping drum (new 2011)
WINDLASSES	Lewmar V6 Hydraulic windlass (new 2009)
ANCHORS	CQR Anchor 105 pounds (47 kilos) with 110m- 12 mm calibrated galvanised chain (2009, regalvanised 2012) CE approved Operated by aluminium pivoting anchor arm with roller and safety pin, settling below deck level in locker (regalvanised 2012) Kedge anchor and warp
PASSERELLE	Angelo Gandola Hydraulic stainless steel and teak w/ Quick controls
SWIMMING LADDER	Stainless steel removable at transom door Aluminium removable at amidship
BIMINI	Carbon fibre bimini covering the forward cockpit with recessed LED lights. Suitable for all conditions

	(has been exposed to over 50 knots of true wind). Sunbrella Navy Captain material used for cover (new 2013). Structure designed by C-Designs
SPRAYHOOD	Forward sprayhood with central roll up window (zips on three sides). Framework drops into recessed channel. Sunbrella Navy Captain (new 2011) New windows 2017
TWIN LIFERAFT LOCKERS	Aft sprayhood framework drops into recessed channel Port and starboard, each housing 8 man liferaft valise Starboard locker contains fresh water hose point, with hot and cold water
TRANSOM/SWIM PLATFORM	Transom door operated by twin hydraulic rams, controlled from starboard steering pedestal Steps from deck to swim platform Stowable steps from platform into the water Fresh water shower on stbd side w/ hot and cold water
MISCELLANEOUS	2 x Hull supports for yacht storage during haul-out periods/shipping Full set of interior protection for aft corridor walls and all floors, made out of Sunbrella (padded in some instances) in a Sand/ Tan colour

11. GALLEY & LAUNDRY EQUIPMENT

GALLEY

- Frigomar refrigeration system - 24 Vdc-220 Vac 50 Hz
- 2 x Stainless steel sinks
- 1 x Large fridge with twin stainless steel doors (with heated surround)
- 1 x Freezer with steel door (with heated surround)
- Cooker (new 2007)
- Miele dish washer
- Miele drop down electric hob
- Panasonic Electric Combi Oven (new 2018)
- GN Espace Ocena Chef gas cooker, gimballed (new 2013)
- Apex Inox overhead stainless steel mounted extendable extractor
- U-Line icemaker (new 2011)

OTHER

- Frigomar air-conditioning controller to twin fan coils
- Teak and stainless steel 5 step companionway leading to aft cockpit

- White Avonite worktops
- Drawers, lockers, and shelves giving suitable storage

12. SAFETY & SECURITY EQUIPMENT

- 1 x 4.00m Avon Adventure RIB with 50hp 4 stroke Yanmar outboard
- 1 x Minimax fire fighting system

13. TENDER

- 1 x Avon Adventure 400 RIB in dark blue (new tubes 2012) with/Yamaha 50hp 4 stroke outboard (476 hours); central console with VHF, Iopolight LED navlights, LED Courtesy lighting, sky pole for wake boarding/ watersports

14. COMMENTS

Built in 2005 by Southern Wind Shipyard in Cape Town, SI VIS PACEM (previously known as FAR AWAY 2005 – 2007) is an 80ft performance cruising yacht. The carbon composite construction gives the yacht a responsive and enjoyable performance whilst an interior equipped with all modern luxuries means that the owner and guests can relax after sailing in a high level of comfort.

SI VIS PACEM is a proven charter yacht in the Mediterranean, Caribbean and Pacific with MCA Cat 2 (SCV) Certification. With a gross charter fee of €25,000 W Med Terms (Summer 2017), she offers an owner the opportunity to purchase a yacht with proven charter potential.

Continuously upgraded and maintained to a high standard (by the same captain from 2007-2015), SI VIS PACEM is a yacht for the owner looking for fast, enjoyable sailing and passage making combined with comfort and good looks

15. PERFORMANCE

During the ARC 2007, SI VIS PACEM won line honours out of the 225 yachts entered. The 2,760nm transatlantic took just over 11 days, averaging 10.4knots. Throughout this voyage, the 7 crew operated watches with only two persons on deck at a time, demonstrating that the yacht can be sailed shorthanded, fast and in a safe and seamanlike manner.

From the Galapagos Islands to the Marquesas in April 2010, a passage of 3,025nm, SI VIS PACEM averaged 9.5knots for the 13 day sail.

All engine hours correct as of 2nd of May 2018. Specification and measurements provided in good faith and are known to be accurate by the owner, but should be checked by the broker. E&OE.

16. REFIT NOTES

2017 – 2018 – IMS 700 & COMPOSITE WORKS

HULL STRUCTURE

The hull was visually inspected once the boat was out of the water

KEEL

Two new anodes were installed like for like for the ones currently in place on the keel flange.

DECK EQUIPMENT

ANCHOR CHAIN

The anchor was dropped and the chain was re-painted and colour coded every 10 metres in the order of red, yellow, blue, white, green. The dyneema bitter end strop was replaced new and was lengthened so that the strop extends past the windlass exit. Extra rubber chain markers were also installed.

ANCHOR ARM

All rollers on the anchor arm were removed. The pins were polished and re-installed with tef gel and lithium grease. The forward most anchor roller was completely replaced.

CHAIN LOCKER

The chain locker was completely cleared out and cleaned thoroughly.

WINCHES

All winches were serviced as per the manuals.

CAPSTAN

The mechanical parts of the capstan were taken apart and serviced.

BLOCKS

The following blocks were fully inspected and serviced: kite sheet x 2, runner tails x 2, tack line, mainsheet boom.

Two new jib car blocks were installed. The new car pin stops were upgraded with a stronger metal. The same pin stops were also installed into the stay sail cars.

HATCHES

Both forepeak hatch dogs were removed, serviced and rebidged with epoxy filler.

LEATHER

Leather protection on the forward life line adjusters was replaced with black.

MAST, BOOM AND RIGGING

RIG SURVEY

The mast and boom were removed from the boat at IMS by Marine Results for a 6-year rig survey.

ANTI-CHAFE TAPE

Protect anti-chafe tape was applied to the radar chafe guard, below the mast head kite exit and around the hounds.

JAMMERS

All jammers both on the mast and on the boom were removed and serviced using appropriate products. The Cunningham reef line housing was removed and repainted.

HALYARD SHEAVES

All halyard sheaves and pins in the boom and mast were removed. The pins and fittings were polished and re-installed using tef gel and applying lithium grease in appropriate places. One kite halyard sheave and one jib halyard were replaced and remade using black delrin.

BOOM

All boom fittings were removed, cleaned, polished and re-installed.

STROPS

A new covered loop mainsheet strop for the boom block was made.

A new dog bone was made for the boom centre lashings.

VHF Aerial

A new mast head VHF aerial was installed and incorporated with a windex.

RUNNING RIGGING

All running rigging was replaced as new with the exception of pole braces and kite sheets.

SAILS AND COVERS

MAINSAIL

A new fully battened mainsail was ordered from North Sails UK. NPL Tour UltraXC Nor Lam 183.4m².

JIB

A new vertical leach battened furling jib was ordered from North Sails UK. NPL Tour UltraXC Nor Lam 136.9m²

FRACTIONAL SPINNAKER

Fully dried out in sun light before storage in container

STORM JIB

Rolled out and visually inspected, found to be in good working order.

SPRAYHOOD

The forward sprayhood was removed, cleaned and put into storage for protection. Blanks were inserted into the recesses.

MECHANICAL ENGINEERING

The engine room was thoroughly cleaned after the winter.

ENGINE

A 200-hour service was carried out including:

- o Oil Change
- o Oil filter Change
- o Primary and secondary diesel filter change
- o Coolant top up
- o Air filter change
- o Impeller change
- o Visual inspection and cleaning

A new alternator was installed

Composite Works fully refurbished the coolant system including removal, cleaning and checking

of:

- o Heat exchanger
- o Oil cooler
- o After cooler
- o Sea water pump
- o Coolant pump
- o Sea water hoses
- o Coolant hoses

ENGINE EXHAUST

The main engine exhaust box was removed from the boat and cleaned. Exhaust hoses and clamps were also replaced with new.

GENERATORS

A 200-hour service was carried out on both generators including:

- o Oil Change
- o Oil filter Change
- o Primary and secondary diesel filter change
- o Coolant top up
- o Air filter change
- o Impeller change
- o Visual inspection and cleaning

In addition, Composite Works carried out the following to both generators...

- o Disassemble the engine from the generator
- o Check all parts
- o Change bearings
- o Reassemble
- o Disassemble and clean heat exchangers
- o Start engine and test

SEA WATER INLETS

A full re-fit was carried out on the engine room sea water inlet; from the hull skin fitting, as far as the first pump. All valves and sea cocks were replaced, all rubber piping was replaced, sea strainers were replaced, starboard clarinet was replaced. All connections and fittings were thoroughly inspected and pressure tested where possible and those that were seen unfit were replaced.

PROPELLER

The propeller was removed, cleaned and visually inspected. Teflon bumper pads were replaced and spares were added to the inventory. A new prop anode and anode plate were installed. The propeller was painted with prop speed.

SHAFT

The shaft anodes were replaced with new. The shaft was painted with prop speed.

P-BRACKET

The p-bracket cutlass bearing clearance was measured and was found to have sufficient clearance of 0.25mm on all sides of the bearing.

BOW THRUSTER

Around the GRP bow thruster plate a new rubber seal was created and installed using 5200. Two anodes were also replaced for new on the bow thruster tunnel.

BLACK WATER

A new lid was installed for the forward black water tank in the master cabin heads.

A new three-way valve was installed for the overboard discharge.

Both black water tanks and sensors were emptied, thoroughly cleaned out and dried.

Neither were used for winter season.

GREY WATER

All pumps were tested and visually inspected.

All tanks, sensors and sumps were emptied, thoroughly cleaned and dried. No grey tanks were used over the winter season.

FRESH WATER

Both fresh water pumps were visually inspected and both tank lids were re-sealed.

Both tanks were emptied, thoroughly cleaned and dried. No fresh water tanks were used over the winter season.

SPECTRA WATER MAKER

The Spectra water maker primary pump motor was removed from the boat and serviced. A new computer board controlling the primary pump was also installed. The system was also winterised.

TECNICOMAR WATER MAKER

The system was also winterised.

FRIDGES / FREEZERS

All fridges and freezers were defrosted and left off for the duration of the winter. All were cleaned out and disinfected. Once back in the water, the gas levels were topped back up to normal levels. The seals for the cockpit fridge were replaced like for like.

AIR-CONDITIONING

Glycol was increased to around 20% in the freshwater circuit and some air was removed from the valve in the engine room. The pressure in the expansion tank was increased to 1.5 bar.

A new drip tray for the freshwater pump was fabricated and installed with a new pipe leading to the condensation drainage sump in the port guest cabin.

HYDRAULICS

Two forward valve blocks were sanded back and cleaned then treated and repainted. All connections were also treated and then covered in hydraulic denso tape.

All hydraulics relating to the passerelle were checked and serviced where needed.

The autopilot pump was checked and serviced where needed.

A new motor for the windlass was installed and spray painted in white; the mechanical parts were also treated and spray painted.

The PTO was removed from the generator and serviced. Several adjoining hydraulic hoses were also replaced. The suction and return filters on the main unit were replaced and the hydraulic fluid level was topped up in the tank.

BILGE PUMPS

A new manual bilge pump was installed in the forepeak drawing from underneath the steps and pumping out through a drainage hole.

A larger high flow bilge pump was also installed in the lazarette. This is designed to be portable and should also double up as a portable fire hose/pump.

ELECTRICAL ENGINEERING

RELAYS

Relays were replaced in the lower saloon for the boom light, transom light and engine room blower.

BATTERIES

All 24 service batteries were tested. Twelve new batteries were ordered and all port side service batteries were replaced.

ELECTRONICS AND AUDIO VISUAL

VHF AERIAL

A new masthead VHF aerial was installed with a new connection. Integrated with a new windex.

INTERIOR JOINERY

Ordered new identical replicatas of hidden blinds for hatches in crew heads and port and stb cabin, from IMP (previously Ocean Air).

SOFT FURNISHINGS

CUSHIONS

New silvertex upholstery on all seats in saloon and nav table in charcoal grey.

CURTAINS

All the curtains in the saloon were replaced like for like which also included curtains for the 3 forward most windows that weren't present before.

PAINTING AND VARNISHING

RIG

Patch touch ups were completed throughout the rig. Mainly on the boom, mast head, spreaders,

both goosenecks and radar guard. Awl fair, 545 primer and matter horn white topcoats were used.

The reef jammer housing was stripped to bare metal and built up to top coat again using the same Awlgrip system.

INTERIOR

The fiddles on the crew mess table were stripped to bare wood and re-varnished using Epifanes fast cure clear varnish (6 coats) and Epifanes rubbed effect to be completed by crew (2 coats).

SAFETY EQUIPMENT

HORSE SHOE BUOYS

Two new yellow horse shoe buoys were bought and installed.

Ships name and Solas reflective tape were installed.

LIFE BUOY LIGHTS

Two new automatic life buoy lights were installed

DAN BUOY

A new Ocean Safety inflatable Dan Buoy was bought and installed.

JONBUOY

The jonbuoy was serviced by Servaux.

MID TERM SURVEY

A mid-term YDSA survey was carried out by Simon Malnoe.

FIRE EXTINGUISHERS

All portable fire extinguishers were serviced by Servaux at the end of March. The engine room fire system was inspected and has been passed as fit for purpose.

LIFE JACKETS

All lifejackets were serviced by Servaux.

TENDER

The tender was put into a storage shed under its own cover and a plastic sheet at IMS. The cooling system was flushed with freshwater for 10 mins. The fuel line was run dry and fuel line fittings were oil.

CHARTS PUBLICATIONS

CHARTS

All Mediterranean charts were updated by Riviera Charts up to the 2nd week of March 2018.

PUBLICATIONS

Where needed, new and up to date editions of all publications such as Sailing Directions, ALRS books, Nautical Almanac etc were bought from Riviera Charts.

INVENTORY

A full of inventory of the boat was completed and the spares inventory was updated. This can be found on the boats computer.

Исключения

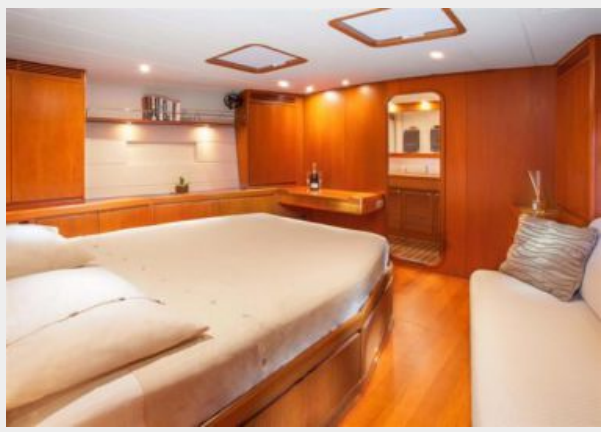
При продаже яхты исключаются личные вещи владельца.

Отказ от ответственности

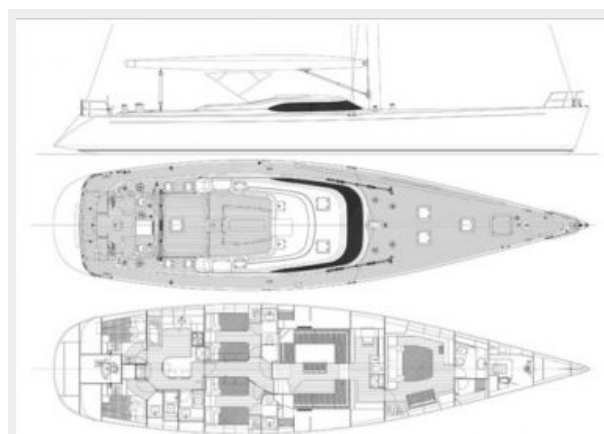
Компания предоставляет описание судна или яхты добросовестно, но не может гарантировать точность этой информации, а также не ручается за техническое состояние. Покупатель должен проинструктировать своих агентов или оценщиков исследовать представленную информацию более подробно, по собственному желанию. Продажа судна или яхты, изменение цены или снятие с продажи будет происходить без предварительного уведомления.

ФОТОГРАФИИ









КОНТАКТЫ

Андрей Шестаков (Andrey Shestakov) – ведущий яхтенный брокер отдела продаж яхт и судов компании Shestakov Yacht Sales Inc. Официальный представитель Shestakov Yacht Sales Inc. для русскоговорящих клиентов в центральном офисе компании в Майами/Форт Лодердейл/Флорида/США.

Контактная информация

Email: andrey@shestakovyachtsales.com

Web: shestakovyachtsales.com

Телефоны

Краснодарский край: **+7(918)465-66-44**

США, Майами, Флорида: **+1(954)274-4435**

Время работы

Понедельник – Суббота: **9:00 - 21:00**
EDT

Воскресенье: **Закрито**

Адрес



Harbour Towne Marina, 850 NE 3rd St,
STE 213, Dania, FL 33004