

# 43FT 2003 FOUNTAINE PAJOT BELIZE 43 — FOUNTAINE PAJOT



**Builder:** FOUNTAINE PAJOT

**Year Built:** 2003

**Model:** Catamaran

**Price:** PRICE ON APPLICATION

**Location:** United States

**LOA:** 43' 0" (13.11m)

**Beam:** 22' 9" (6.93m)

**Max Draft:** 4' 2" (1.27m)

Our experienced yacht broker, Andrey Shestakov, will help you choose and buy a yacht that best suits your needs 43ft 2003 Fountaine Pajot Belize 43 — FOUNTAINE PAJOT from our catalogue. Presently, at Shestakov Yacht Sales Inc., we have a wide variety of yachts available on our sale's list. We also work in close contact with all the big yacht manufacturers from all over the world.

If you would like to buy a yacht 43ft 2003 Fountaine Pajot Belize 43 — FOUNTAINE PAJOT or would like help answering any questions concerning purchasing, selling or chartering a yacht, please call +1(954)274-4435

# TABLE OF CONTENTS

---

TABLE OF CONTENTS	2
SPECIFICATIONS	4
Overview	4
Basic Information	4
Dimensions	4
Speed, Capacities and Weight	4
Accommodations	4
Hull and Deck Information	5
Engine Information	5
DETAILED INFORMATION	6
Accommodations	6
Galley	6
Electronics	6
Electrical	7
Deck	7
Sails & Rigging	7
Exclusions	7
Disclaimer	7
PHOTOS	8
Salon area	8
Electronics at Nav Station	8
Owners cabin	8
Galley	8
Owner's cabin	9
Owner's head and shower	9
Guest head and shower	9
Starboard crew quarters	9
Aft guest cabin	10

---

Forward guest cabin	10
Port crew quarters	10
Helm	10
Engine Access	10
Cockpit entrance	10
CONTACTS	11
Contact details	11
Telephones	11
Office hours	11
Address	11

---

# SPECIFICATIONS

---

## Overview

---

This one-owner boat has always been maintained, and it shows. The boat was intended for use as a cruiser, and part-time liveaboard. After cruising in the Bahamas it was returned to Charleston.

This is an opportunity to own a clean, well maintained boat that is ready to go.

## Basic Information

---

**Category:** Catamaran

**Model Year:** 2003

**Year Built:** 2003

**Country:** United States

## Dimensions

---

**LOA:** 43' 0" (13.11m)

**LWL:** 39' 3" (11.96m)

**Beam:** 22' 9" (6.93m)

**Max Draft:** 4' 2" (1.27m)

**MFG Length:** 42' 6" (12.95m)

## Speed, Capacities and Weight

---

**Displacement:** 1194 Pounds

**Water Capacity:** 143 Gallons

**Fuel Capacity:** 79 Gallons

## Accommodations

---

**Total Cabins:** 3

**Total Berths:** 3

**Total Heads:** 2

---

## Hull and Deck Information

---

**Hull Material:** Fiberglass

---

## Engine Information

---

**Engines:** 2

**Manufacturer:** Yanmar

**Model:** 3GM30

**Engine Type:** Inboard

**Fuel Type:** Diesel

---

# DETAILED INFORMATION

---

## Accommodations

---

- Three cabin owners version
- Two heads and showers
- Master cabin has separate shower
- Large Salon with panoramic view
- Crew quarters forward of cabins in bow
- Numerous lockers and closets located throughout
- Bedflex mattress system
- Numerous portholes and hatches strategically located for ventilation and light
- 3 Reverse Cycle A/C units totalling 38000 BTU's

## Galley

---

- Galley up configuration, located to starboard
- ENO propane oven
- ENO 3 burner stove
- Goldstar microwave
- Sea Frost Refrigeration - separate fridge/freezer
- Double Stainless Steel sinks
- Separate dish rack drying area
- Lockers and drawers located throughout

## Electronics

---

- Icom VHF IC-M402
- Raymarine ST60 Multi
- Raymarine RL70 Pathfinder
- Raymarine HF Marine IC M802
- Pioneer SDV-P7
- Icom SP-24 speaker
- Sharp Aquos TV
- Raymarine Pathfinder RL80C
- Raymarine ST6001+ A/P
- Raymarine ST60 Wind
- Raymarine ST60 Multi
- Icom RAM

---

## Electrical

---

- 120 A/C power
- 12 volt DC power
- 12-volt outlet at helm
- Xantrex Link 10 monitor
- 2 X 30A umbilical cords
- Northern Lights generator (475 hours)

---

## Deck

---

- Lines controlled from cockpit
- Electronics at helm station as well as nav station
- 2 winches on either side of the cockpit for sheets
- Electric primary winch
- Mainsheet and traveler outside of cockpit with controlling winch
- Trampoline at bow
- Bow seats at pulpit

---

## Sails & Rigging

---

- Fully battened main
- Stack pack
- Roller furling genoa
- Electric primary winch for main halyard
- All lines led to cockpit
- Mainsheet traveler directly behind cockpit
- Fractional rig

---

## Exclusions

---

Owner's personal belongings.

---

## Disclaimer

---

The Company offers the details of this vessel or yacht in good faith but cannot guarantee or warrant the accuracy of this information nor warrant the condition of the vessel. A buyer should instruct his representatives, agents, or his surveyors, to investigate such details as the buyer desires validated. This vessel or yacht is offered subject to prior sale, price change, or withdrawal without notice.

# PHOTOS

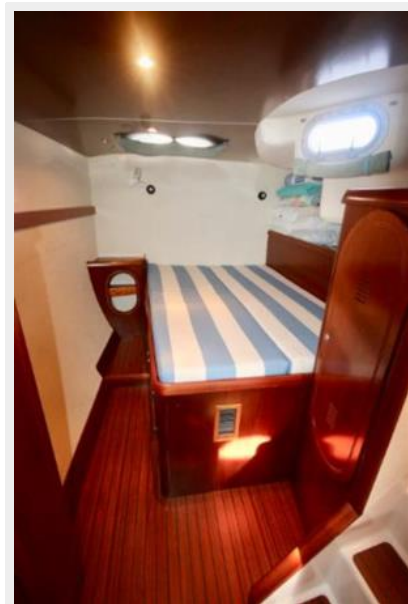
**Salon area**



**Electronics at Nav Station**



**Owners cabin**



**Galley**





**Owner's cabin**



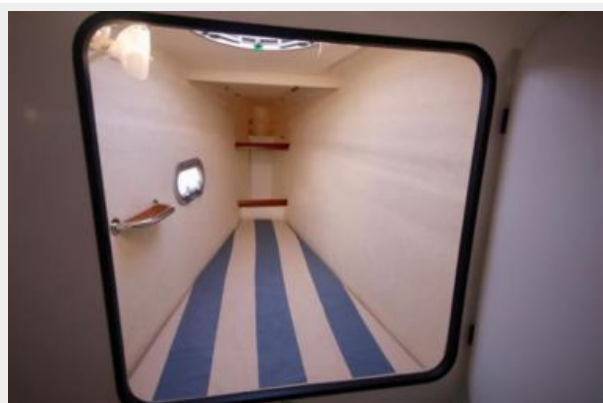
**Owner's head and shower**



**Guest head and shower**



**Starboard crew quarters**



**Aft guest cabin**



**Forward guest cabin**



**Port crew quarters**



**Helm**



**Engine Access**



**Cockpit entrance**



# CONTACTS

---

Andrey Shestakov, leading yacht broker of the sales department of Shestakov Yacht Sales Inc. Shestakov Yacht Sales Inc., the official representative of the Miami/Fort Lauderdale FL headquarters.

## Contact details

---

Email: [andrey@shestakovyachtsales.com](mailto:andrey@shestakovyachtsales.com)

Web: [shestakovyachtsales.com/en/](http://shestakovyachtsales.com/en/)

## Telephones

---

USA: +1(954)274-4435

## Office hours

---

Monday – Saturday: **9:00 - 21:00** EDT

Sunday: **closed**

## Address

---



Harbour Towne Marina, 850 NE 3rd St,  
STE 213, Dania, FL 33004