

58FT 2002 FAIRLINE SQUADRON 58 — FAIRLINE



Builder: FAIRLINE

Year Built: 2002

Model: Motor Yacht

Price: PRICE ON APPLICATION

Location: United States

LOA: 58' 0" (17.68m)

Beam: 16' 0" (4.88m)

Max Draft: 4' 7" (1.40m)

Cruise Speed: 27 Kts. (31 MPH)

Max Speed: 36 Kts. (41 MPH)

Our experienced yacht broker, Andrey Shestakov, will help you choose and buy a yacht that best suits your needs 58ft 2002 Fairline Squadron 58 — FAIRLINE from our catalogue. Presently, at Shestakov Yacht Sales Inc., we have a wide variety of yachts available on our sale's list. We also work in close contact with all the big yacht manufacturers from all over the world.

If you would like to buy a yacht 58ft 2002 Fairline Squadron 58 — FAIRLINE or would like help answering any questions concerning purchasing, selling or chartering a yacht, please call +1(954)274-4435

TABLE OF CONTENTS

TABLE OF CONTENTS	2
SPECIFICATIONS	4
Overview	4
Basic Information	4
Dimensions	4
Speed, Capacities and Weight	4
Accommodations	4
Hull and Deck Information	5
Engine Information	5
DETAILED INFORMATION	6
Galley	6
Salon	6
Master Stateroom	7
VIP Stateroom	7
Guest Stateroom 1	8
Upper Helm	8
Lower Helm	8
FLYBRIDGE	9
Mechanical	9
Aft Deck	10
Electrical	10
Exclusions	11
Disclaimer	11
PHOTOS	12
CONTACTS	27
Contact details	27
Telephones	27
Office hours	27

Address

27

SPECIFICATIONS

Overview

This 2002 58 Fairline Squadron offers a great layout and design to provide comfort while cruising. The boat is powered by twin Caterpillar 3406Es (800Hp each) with 2950 hours. The latest service was done in March of 2018 and is ready to go. The boat also was upgraded with new Garmin electronics in 2014 and a new ecoteak deck in 2017, also has a bow thruster. New Bottom paint and zincs in 2017, along with all new batteries. The vessel has 3 staterooms and sleeps 6 comfortably. The boat is easy to see and is located in Boca Raton, Florida. Call for more info!

Basic Information

Category: Motor Yacht

Model Year: 2002

Year Built: 2002

Country: United States

Dimensions

LOA: 58' 0" (17.68m)

Beam: 16' 0" (4.88m)

Max Draft: 4' 7" (1.40m)

Speed, Capacities and Weight

Cruise Speed: 27 Kts. (31 MPH)

Cruise Speed RPM: 1800 Kts.

Max Speed: 36 Kts. (41 MPH)

Max Speed RPM: 2250 Kts.

Accommodations

Total Heads: 2

Hull and Deck Information

Hull Material: Fiberglass

Engine Information

Engines: 2

Manufacturer: Caterpillar

Model: 3406 E

Fuel Type: Diesel

DETAILED INFORMATION

Galley

- Semi-circular dinette at raised bridge deck level facing lower helm position
- Access stairway to flybridge
- AC/DC control panel
- Teak and holly flooring
- (2) Sinks with Corian countertops
- 4-burner Whirlpool cooktop
- Dishwasher
- Custom storage for glasses and plates
- (3) Electrical outlets- lights and A/C Controls
- Sharp Convection oven
- Washer and Dryer below Gally
- (7) Cabinets and floor storage
- TV with SAT Reciever

Salon

- Semi- circular settee with storage
- High-gloss cherry cabinetry contains an ice maker, TV, and Bose surrand-sound audio system, cutlery set
- Stainless steel framed, curved full width door to aft teak-laid cockpit.
- Tinted glass side windows (electrically operated), recessed over head lighting, over head grab rail.
- Flat Screen Sharp TV
- Central A/C

Master Stateroom

- Large Double bed with innerspring mattress and under storage
- Designer Soft Goods
- Twin Wardrobes with interior lighting
- Mid-level storage compartments
- Recessed lighting
- Reading lights
- TV with SAT reciever
- A/C Controls
- Twin opening portholes
- Full hatch with fly screen and privacy screen to foredeck
- Full-length mirror
- Access to en-suite head with sink and separate shower stall

VIP Stateroom

- Double bed with innerspring mattress and under storage
- Designer soft goods
- Desk and Vanity
- Double wardrobe with interior lighting
- A/C Control
- TV with SAT reciever
- AM/FM Radio
- Mid-level storage doors
- Private Access to spacious day-head with separate shower stall
- Ralph Lauren pillows and shams

Guest Stateroom 1

- Twin 6'6" single beds
- Bedside Table
- Mid-level storage
- Wardrobe with Interior lighting
- A/C Control
- TV with SAT Receiver

Upper Helm

- All of the same instruments as main helm, except added Garmin 3006C GPS weather radar and Clarion AM/FM/ Sirius Radio in 2014.
- (3) Forward facing helm seats
- Teak Decks
- (2) Bimini Tops
- Bow thruster

Lower Helm

- Stainless steel windscreen with electrically opening side window
- Madrona wood finish instrument panel
- Electrically adjustable double helm seat
- Full engine instruments
- Audible alarms
- High speed compass
- Water-level gauge
- Navigation and running light switches
- 12V outlet

- Door to side deck
- (2) Electric captain chairs
- Electronic controls
- Horizon VHF
- Garmin GPS (2014)
- Simrad AP24 Autopilot
- Bow thruster

FLYBRIDGE

- Twin access via stairway and by teak stairway with stainless handrail on aft deck
- Blue Perspex hatch to internal stairway
- Large Sunbathing area forward of helm position
- Seating to starboard of helm that converts to tilting sunbed
- Flybridge bar complete with refrigerator and ice maker
- Barbecue griddle, sink, and trash bin
- Large C- shaped seating area with large, teak edged table, and ample storage
- Stainless steel guard rails and teak deck

Mechanical

- Twin Caterpillar 3406E 800hp with 2950 hours(latest service done in March 2018)
- Automatic fire control system
- Oil change system
- Ventilation fans
- Cathodic protection
- Dripless shaft seals
- Engine room lights

- Racor fuel filters
- Sea strainers

Aft Deck

- Teak Stairway to flybridge
- Teak laid cockpit floor
- Bench seating with access to large aft storage area
- Twin transom gates to large teak laid swim platform
- Hot and cold Transom Shower
- Twin Storage Lockers
- Access storage to storage hold
- Fender storage
- Twin warping drums
- Cockpit speakers
- Passerelle
- Hydraulic gangway
- Crew quarters/ Storage
- Cockpit controls
- (2) Aft Windlass
- Swim ladder
- Cockpit Cushions

Electrical

- 220V/ 110V/ 60Hz electrical system
- Generator 21.5Kw with 5500 hours (Complete service in March 2018)
- AC/DC Electrical system

- Battery bank
- Electrical Bonding System
- Battery Charger 100 amp
- Battery parallel switch
- Dockside electrical cable
- Cablemaster
- Voltage meter
- Circuit breaker panel
- Chilled A/C & Reverse Heat
- Electrical bilge pump
- Hot water heater
- Shore power outlet

Exclusions

Owner's personal belongings.

Disclaimer

The Company offers the details of this vessel or yacht in good faith but cannot guarantee or warrant the accuracy of this information nor warrant the condition of the vessel. A buyer should instruct his representatives, agents, or his surveyors, to investigate such details as the buyer desires validated. This vessel or yacht is offered subject to prior sale, price change, or withdrawal without notice.

PHOTOS









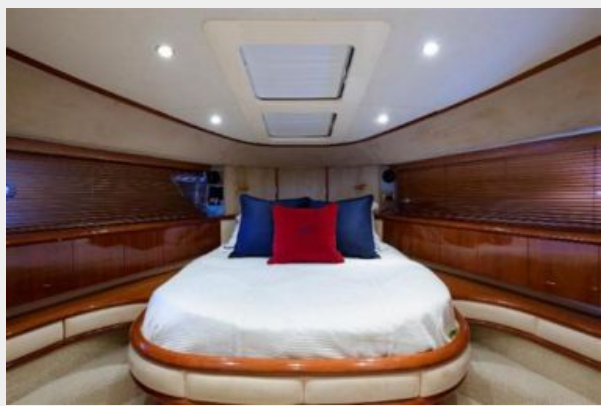
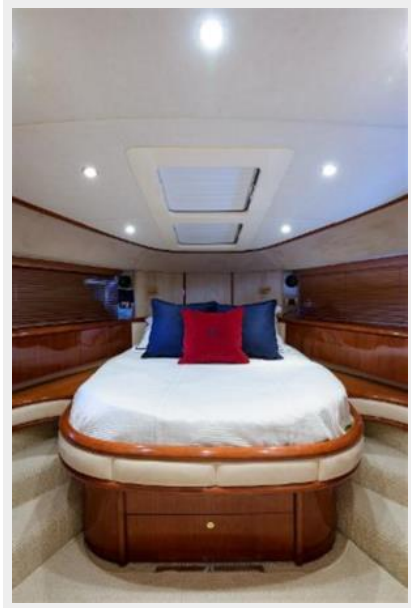
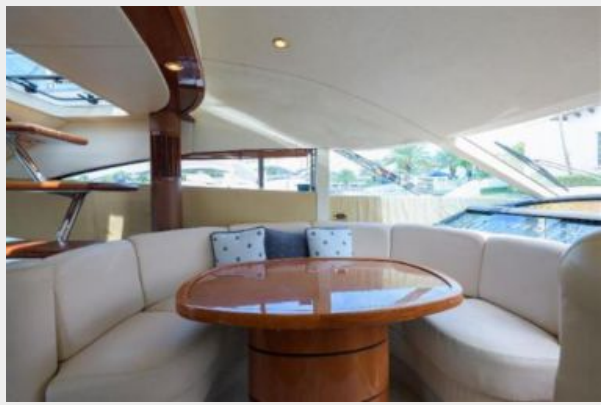


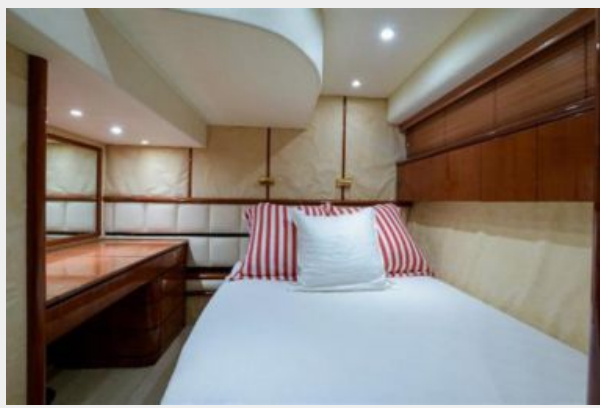




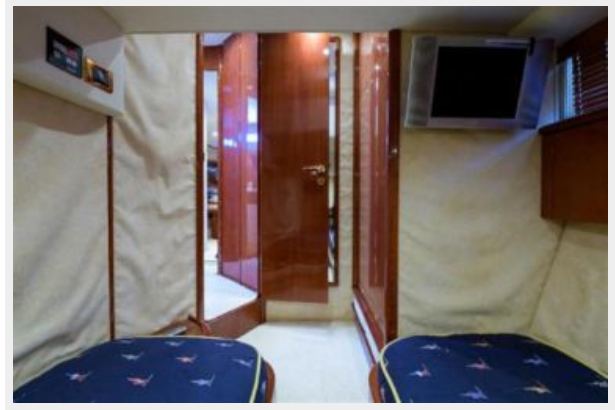
















CONTACTS

Andrey Shestakov, leading yacht broker of the sales department of Shestakov Yacht Sales Inc. Shestakov Yacht Sales Inc., the official representative of the Miami/Fort Lauderdale FL headquarters.

Contact details

Email: andrey@shestakovyachtsales.com

Web: shestakovyachtsales.com/en/

Telephones

USA: +1(954)274-4435

Office hours

Monday – Saturday: **9:00 - 21:00** EDT

Sunday: **closed**

Address



Harbour Towne Marina, 850 NE 3rd St,
STE 213, Dania, FL 33004