

AZAYA — CUSTOM



Builder: CUSTOM

Year Built: 1983

Model: Center Cockpit

Price: PRICE ON APPLICATION

Location: United States

LOA: 48' 0" (14.63m)

Beam: 14' 2" (4.32m)

Max Draft: 6' 0" (1.83m)

Our experienced yacht broker, Andrey Shestakov, will help you choose and buy a yacht that best suits your needs **Azaya — CUSTOM** from our catalogue. Presently, at Shestakov Yacht Sales Inc., we have a wide variety of yachts available on our sale's list. We also work in close contact with all the big yacht manufacturers from all over the world.

If you would like to buy a yacht **Azaya — CUSTOM** or would like help answering any questions concerning purchasing, selling or chartering a yacht, please call **+1(954)274-4435**

TABLE OF CONTENTS

TABLE OF CONTENTS	2
SPECIFICATIONS	3
Overview	3
Basic Information	3
Dimensions	3
Speed, Capacities and Weight	3
Accommodations	3
Hull and Deck Information	4
Engine Information	4
DETAILED INFORMATION	5
Accommodations & Layout	5
Galley	5
Sails & Rigging	5
Electronics & Navigation	6
Deck Equipment	6
Mechanical	7
Electrical	8
Disclaimer	8
Exclusions	9
Disclaimer	9
PHOTOS	10
CONTACTS	23
Contact details	23
Telephones	23
Office hours	23
Address	23

SPECIFICATIONS

Overview

NEW TO THE MARKET! Custom aluminum centercockpit cutter. Robert Perry design and built by Paul Luke yard in Booth Bay, Maine. Bluewater cruiser! Just returned from 7 enjoyable years cruising the Caribbean and now located in Fort Pierce, Florida. Nicely maintained and cruise equipped. Spacious and comfortable accommodations, 2 stateroom/2 head layout. King berth and tall headroom! Please read the comprehensive listing for details.

Basic Information

Category: Center Cockpit

Sub Category: Cruising Sailboat

Model Year: 1983

Year Built: 1983

Country: United States

Dimensions

LOA: 48' 0" (14.63m)

Beam: 14' 2" (4.32m)

Max Draft: 6' 0" (1.83m)

Speed, Capacities and Weight

Displacement: 36488 Pounds

Water Capacity: 350 Gallons

Holding Tank: 50 Gallons

Fuel Capacity: 150 Gallons

Accommodations

Total Cabins: 2

Hull and Deck Information

Hull Material: Aluminum

Engine Information

Engines: 1

Manufacturer: Perkins

Model: 4-236

Engine Type: Inboard

Fuel Type: Diesel

DETAILED INFORMATION

Accommodations & Layout

- Honey color teak and Butternut wood interior
- Unique handcarved panels throughout the boat
- Centercockpit 2 cabin, 2 head layout
- Lots of ventilation with opening hatches, ports, dorade vents
- King size aft berth
- Tall 6'3" headroom, 7' at entry
- Large salon with dual settees
- Large drop leaf dining table
- Cabinets Large L shaped galley
- Forward facing Nav desk
- Large Workshop and tool storage!
- Excellent engine access
- 4 deck prisms

Galley

- Large L shaped galley
- Corian countertops
- Grunert large front loading Freezer and Refrigerator, water cooled compressor
- "Luke" 4 burner stove and oven & grill
- SS sink
- Pressure water system
- Fresh and salt water foot pumps
- Pantry
- Flip up counter
- Deep bin storage

Sails & Rigging

- Cutter rigged
- Painted aluminum mast and boom
- Keel stepped
- Boom cradle
- Luke sail track
- Mack Mainsail 2008
- Hood in mast main furler
- Mack Staysail 2008

- Harken roller furler on forestay and baby stay
- Yankee
- Nylon Passagemaker on roller furler
- Asymmetrical Spinnaker
- Tri sail and track
- Storm Jib
- Downwind pole
- Standing rigging (2006)
- Mast pulled (2012) to replace internal wiring, spreader fittings, roller furler bearings, antennas, spartite, boots
- Standing rigging inspection and repairs (2017)
- (2) Electric Barient #36 ST two speed primary winches
- (2) Barient #28 ST two speed winches
- (3) Barient #27 ST two speed winches
- (1) Barient #19 ST two speed winch
- (1) Barient #28 ST two speed winch on mast
- (1) Barient #27 ST two speed winch on mast

Electronics & Navigation

- Raymarine Quantam 18# Q24W Radar (2018)(Wifi model with power cable)
- Raymarine Hybrid Touch Chartplotter, Depth Monitor eS78 (2018) interfaces with radar on wifi - on bracket inside cabin
- Garmin 540s Chartplotter at helm
- Raymarine ST60+ Wind, Speed, Depth in cockpit
- Repeaters at nav desk(2011)
- Raymarine RN300 GPS at nav desk
- Furuno Navigation Pilot Autopilot (2011)
- Standard Horizon VHF w/AIS and Distress, needs interfacing to GPS
- ICOM IC 706 SSB
- SGC SSB Tranciever, modem not connected
- JVC Stereo
- Constellation Compass
- Sylvania Flatscreen TV
- Clock
- Barometer

Deck Equipment

- Lofrans Falkon Horizontal Electric Windlass with chain and rode gypsy
- Aluminum stem fitting with dual bow rollers
- Rocna type anchor 33kg, 3/8" chain

- 75# CQR anchor , 100' 3/8" chain and nylon rode
- "Luke" fisherman anchor
- Centercockpit with generous seating and cushions
- Elkhide wrapped wheel
- Cockpit table
- Teak grate sole in cockpit
- Dodger
- Toast Sunbrella Bimini
- SS Arch with Davits and Solar panels
- Cigar stern
- Lifelines replaced (2017)
- 11' RIB Dingy Hypalon with aluminum bottom (2003)
- Yamaha 2 stroke 15hp Outboard
- Lifesling
- PFD's
- Flares, horn
- (3) Fire extinguishers
- Ditch bag, well equipped with handheld watermaker, Epirb, Hummingbird depth sounder, etc.
- Emergency tiller
- 6 Dorade vents
- (6) Goyot deck hatches with teak trim(
- 18) Goyot opening portlights
- Most portholes replaced with laminated safety glass 2010
- High gunnels
- Aluminum cleats
- Teak cap rail
- Non skid decks
- Deck is welded to the hull
- Long fin keel

Mechanical

- 85 hp Perkins 4-236 naturally aspirated diesel, est 7000 hrs with good maintenance
- Replaced raw water pump and strainer (2012)
- Engine heat exchanger replaced (2010)
- Engine oil cooler (2010)
- Transmission oil cooler (2010)
- Injectors (2010)
- Fuel pump (2010)
- Fuel fill and cockpit drain hoses (2010)
- 150 gal fuel capacity
- Dual Racors

- 12V 160a Alternator
- 3 bladed "Luke" folding prop
- Engine mounts replaced (2015)
- Isolation flex coupling, flex tube and packing gland (2014)
- Morse control cables (2014)
- Tons of spares and tools
- Cruise Air reverse cycle air conditioning with 2 handlers
- Propane fume sensor (2018)
- (2) 30 lb propane tanks
- Replaced refrigeration brushes (2018)
- Edson bilge pump (2016)
- (2) Rule automatic bilge pumps (1 new 2018)
- (2) Whale bilge pumps
- High water alarm
- Shurflo water pump and accumulator tank
- Total water capacity 350 gallons in 3 tanks
- (2) Jabsco manual heads (2012)
- (2) 25 gal ea holding tanks
- (2) showers
- All manuals, maintenance receipts and original builder blueprints

Electrical

- Power distribution panels 12V & 110
- 6 kw Northern Lights Generator, est 6,900 hrs
- Generator heat exchanger replaced (2012)
- 12 V boat
- (8) Duracell 6v, 75 ah ea House Battery bank (2017)
- Engine start battery Duracell 27 (2017)
- (2) Solar panels 280 watt
- Alternator (2014)
- Magnum Inverter/Charger 12V/110V/200 watts, 100 amp (2014)
- 2nd spare Inverter
- Isolation transformer for shore power removed and needs replacement
- 12V fans
- Overhead and reading lights

Disclaimer

The Company offers the details of this vessel in good faith but cannot guarantee or warrant the accuracy of this information nor warrant the condition of the vessel. A buyer should instruct his agents, or his surveyors, to investigate such details as the buyer desires validated. This vessel is

offered subject to prior sale, price change, or withdrawal without notice.

Exclusions

Owner's personal belongings.

Disclaimer

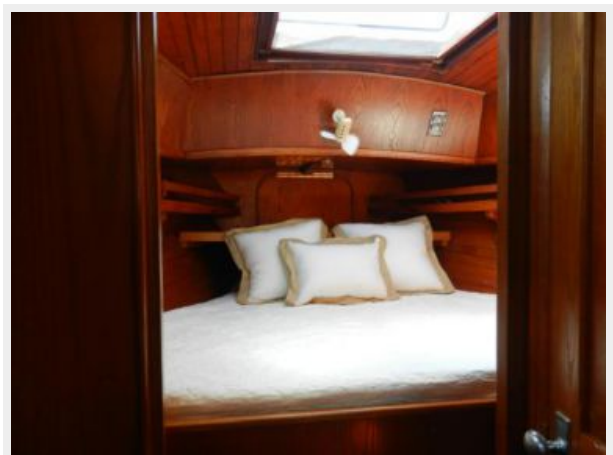
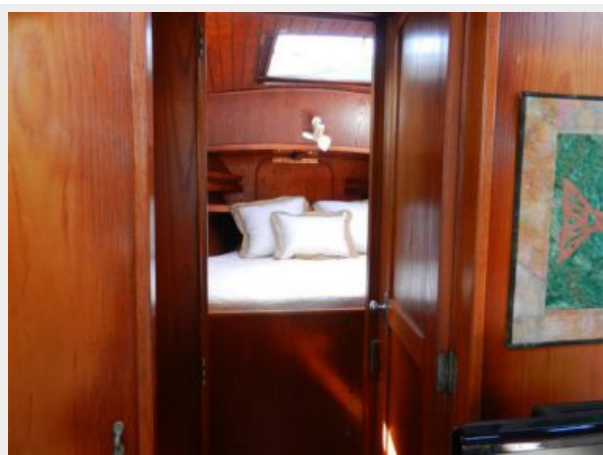
The Company offers the details of this vessel or yacht in good faith but cannot guarantee or warrant the accuracy of this information nor warrant the condition of the vessel. A buyer should instruct his representatives, agents, or his surveyors, to investigate such details as the buyer desires validated. This vessel or yacht is offered subject to prior sale, price change, or withdrawal without notice.

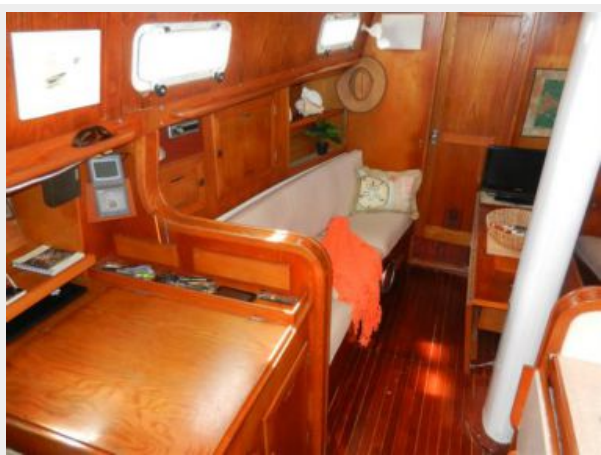
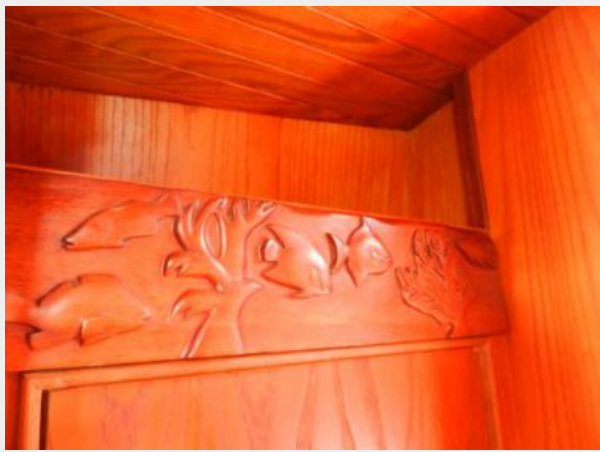
PHOTOS

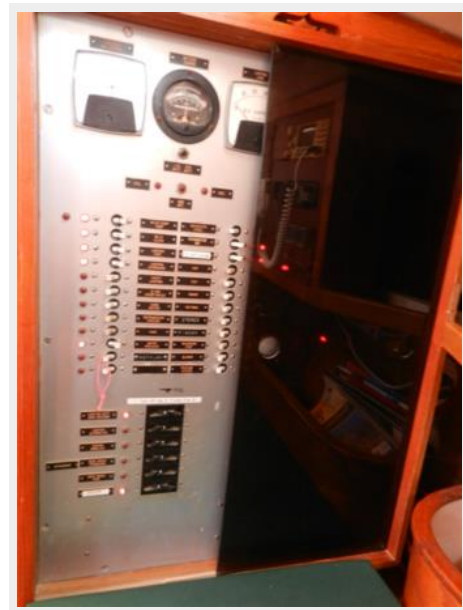


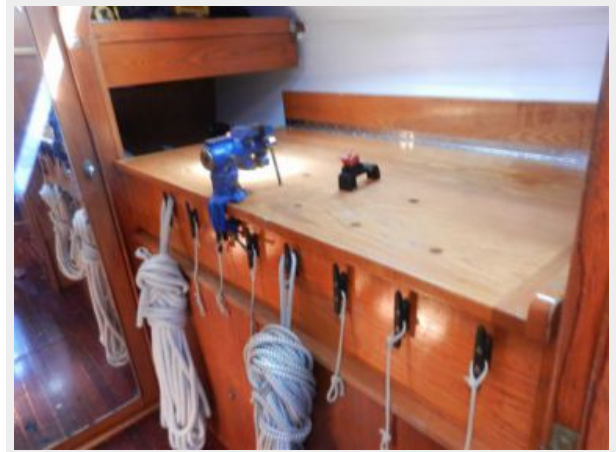


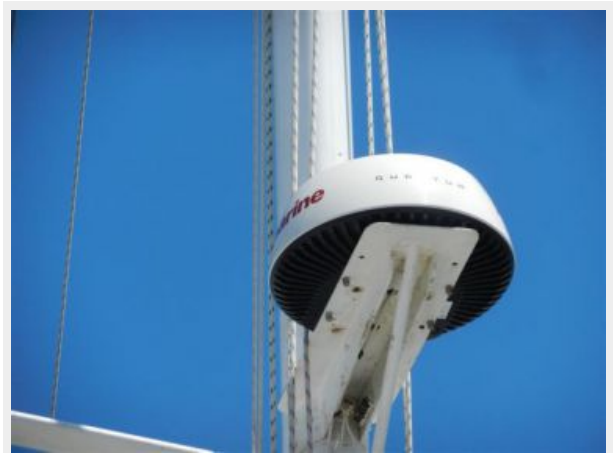


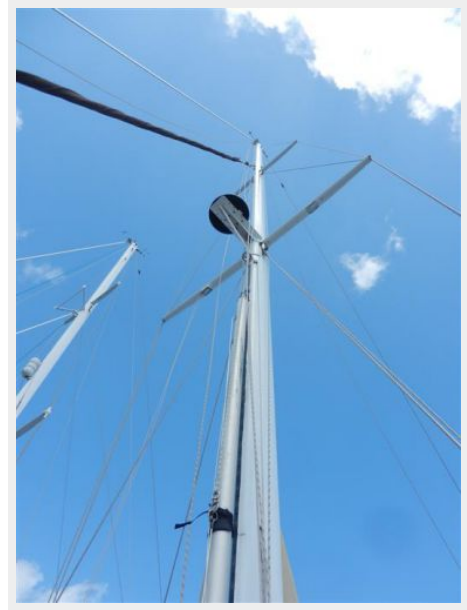


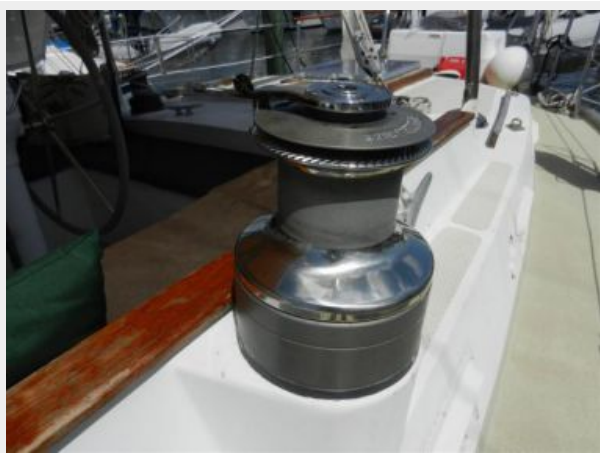
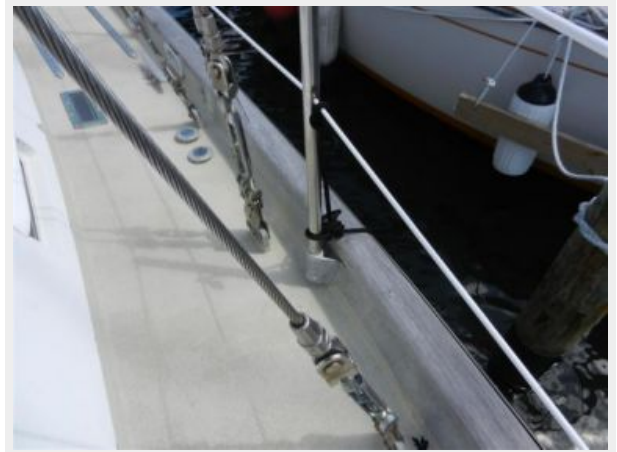


















CONTACTS

Andrey Shestakov, leading yacht broker of the sales department of Shestakov Yacht Sales Inc. Shestakov Yacht Sales Inc., the official representative of the Miami/Fort Lauderdale FL headquarters.

Contact details

Email: andrey@shestakovyachtsales.com

Web: shestakovyachtsales.com/en/

Telephones

USA: +1(954)274-4435

Office hours

Monday – Saturday: **9:00 - 21:00** EDT

Sunday: **closed**

Address



Harbour Towne Marina, 850 NE 3rd St,
STE 213, Dania, FL 33004