

## OBLIQUITY — HUNTER



**Builder:** HUNTER

**Year Built:** 1996

**Model:** Sloop

**Price:** PRICE ON APPLICATION

**Location:** United States

**LOA:** 40' 0" (12.19m)

**Beam:** 13' 5" (4.09m)

**Max Draft:** 4' 10" (1.47m)

**Cruise Speed:** 7 Kts. (8 MPH)

**Max Speed:** 8 Kts. (9 MPH)

Our experienced yacht broker, Andrey Shestakov, will help you choose and buy a yacht that best suits your needs **Obliquity — HUNTER** from our catalogue. Presently, at Shestakov Yacht Sales Inc., we have a wide variety of yachts available on our sale's list. We also work in close contact with all the big yacht manufacturers from all over the world.

If you would like to buy a yacht **Obliquity — HUNTER** or would like help answering any questions concerning purchasing, selling or chartering a yacht, please call **+1(954)274-4435**

# TABLE OF CONTENTS

---

TABLE OF CONTENTS	2
SPECIFICATIONS	6
Overview	6
Basic Information	6
Dimensions	6
Speed, Capacities and Weight	6
Accommodations	7
Hull and Deck Information	7
Engine Information	7
PHOTOS	8
Profile	8
Profile	8
Port Side in Water	8
Pulpit	8
Anchor	8
Anchor Locker	8
Bow Looking Aft	9
Lewmar Winches	9
Main Street Winch	9
Starboard Winch	9
Lewmar Windlass	9
Vang	9
Wind Vane	10
Mast	10
Mast and Tackle	10
Radar	10
Spreaders	10
Air Breeze Air Generator	10

Salon	11
Cabin	11
Port Settee	11
Insignia Flat Screen TV	11
Starboard Dinette	11
Wine Glass Rack	11
Liquor Cabinet	12
Corian Countertops	12
Under Sink Cabinetry	12
Double SS Extra Deep Sinks	12
Sharp Microwave Oven	12
Princess SS 3-Burner Range Top	12
Princess Oven	13
Cold Box	13
Ice Box	13
Refrigeration with Gas Shock Assisted Lids	13
Aft Port Hanging Locker	13
Aft Starboard Hanging Locker	13
Aft Stateroom Queen Size Berth	14
Head	14
Head	14
Head	14
Forward Head	14
Bluetooth Stereo	14
ICOM VHF IC-M59	15
Si-Tex Communications Receiver	15
Seaward Solenoid Control	15
Electrical Panel	15
Wind Generator Control Panel	15

ICOM Marine Tranceiver	15
Raymarine	16
Yanmar Tach and Hour Gauge	16
West Marine Submersible VHF Radio	16
Solar Panel Power Switch	16
Raymarine Auto Pilot	16
Raymarine Depth Sounder	16
Ritchie Back Lite Compass	17
Roller Furling	17
Solar Vented Hatch Cover	17
Fusion Speakers	17
Magma Grill with Cover	17
Doyle Lazy Jack with Zipper Pull	17
Lewmar 6 Spoke Folding Captains Wheel	18
Deluxe Captains Seat	18
Custom Cockpit Cushions and Sea Deck Flooring	18
Port Stern Rail Seat	18
Starboard Stern Rail Seat	18
Transom and Sea Deck Flooring	18
Step Transom and Sea Deck Flooring	19
Battery Storage	19
Line Brake	19
Perko Battery Switch	19
Battery Switch	19
Transmission	19
Yanmar Front	20
<b>CONTACTS</b>	<b>21</b>
Contact details	21
Telephones	21

---

Office hours	21
Address	21

---

# SPECIFICATIONS

---

## Overview

---

The Hunter 40.5 is a great cruising sailboat. With the two staterooms complete with en-suite heads, large salon seating areas, and large galley with all the amenities for food preparation, and huge storage capacity. The owner has spared no expense to maintain and update. With a replaced Yanmar Engine and Transmission in 2009, updated electronics, newly configured master cabin berth using a home style queen mattress, bimini and complete enclosure, and beautiful interior soft good fabrics, she is ready for continued sailing and her next adventures.

## Basic Information

---

**Category:** Sloop

**Sub Category:** Cruising/Racing Sailboat

**Model Year:** 1996

**Year Built:** 1996

**Country:** United States

**Cockpit:** Yes

## Dimensions

---

**LOA:** 40' 0" (12.19m)

**LWL:** 35' 4" (10.77m)

**Beam:** 13' 5" (4.09m)

**Max Draft:** 4' 10" (1.47m)

**Clearance:** 63' 3" (19.28m)

**MFG Length:** 40' 4" (12.29m)

## Speed, Capacities and Weight

---

**Cruise Speed:** 7 Kts. (8 MPH)

**Max Speed:** 8 Kts. (9 MPH)

**Displacement:** 20000 Pounds

**Water Capacity:** 120 Gallons

**Holding Tank:** 40 Gallons

**Fuel Capacity:** 30 Gallons

---

## Accommodations

---

**Total Cabins:** 2

**Total Heads:** 2

---

## Hull and Deck Information

---

**Hull Material:** Fiberglass

**Hull Configuration:** Monohull

---

## Engine Information

---

**Engines:** 1

**Manufacturer:** Yanmar

**Model:** 4JH4AE

# PHOTOS

**Profile**



**Profile**



**Port Side in Water**



**Pulpit**



**Anchor**



**Anchor Locker**





**Bow Looking Aft**



**Lewmar Winches**



**Main Street Winch**



**Starboard Winch**



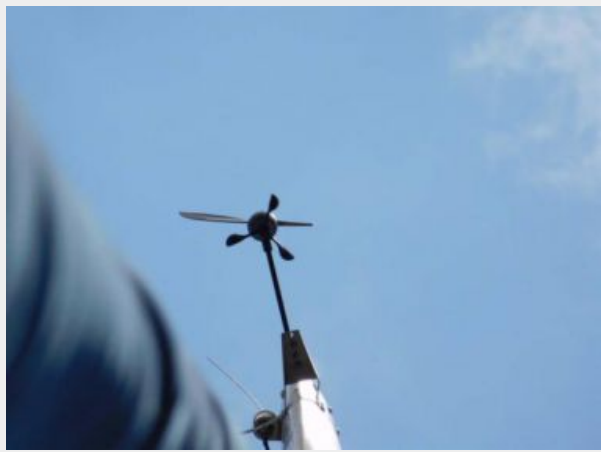
**Lewmar Windlass**



**Vang**



**Wind Vane**



**Mast**



**Mast and Tackle**



**Radar**



**Spreaders**



**Air Breeze Air Generator**



**Salon**



**Cabin**



**Port Settee**



**Insignia Flat Screen TV**



**Starboard Dinette**



**Wine Glass Rack**



**Liquor Cabinet**



**Corian Countertops**



**Under Sink Cabinetry**



**Double SS Extra Deep Sinks**



**Sharp Microwave Oven**



**Princess SS 3-Burner Range Top**



**Princess Oven**



**Cold Box**



**Ice Box**



**Refrigeration with Gas Shock Assisted Lids**



**Aft Port Hanging Locker**



**Aft Starboard Hanging Locker**



**Aft Stateroom Queen Size Berth**



**Head**



**Head**



**Head**



**Forward Head**



**Bluetooth Stereo**



**ICOM VHF IC-M59**



**Si-Tex Communications Receiver**



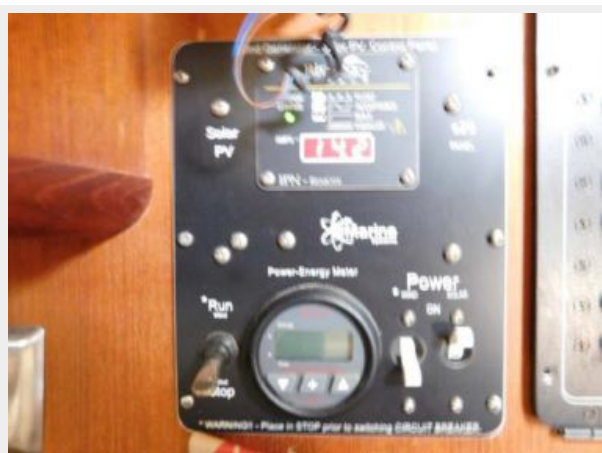
**Seaward Solenoid Control**



**Electrical Panel**



**Wind Generator Control Panel**



**ICOM Marine Tranceiver**



**Raymarine**



**Yanmar Tach and Hour Gauge**



**West Marine Submersible VHF Radio**



**Solar Panel Power Switch**



**Raymarine Auto Pilot**



**Raymarine Depth Sounder**

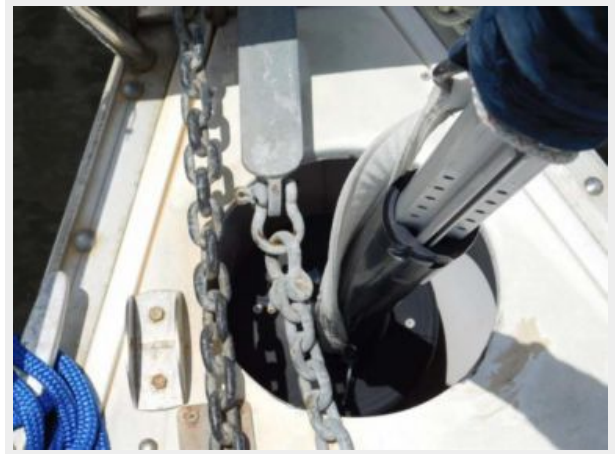




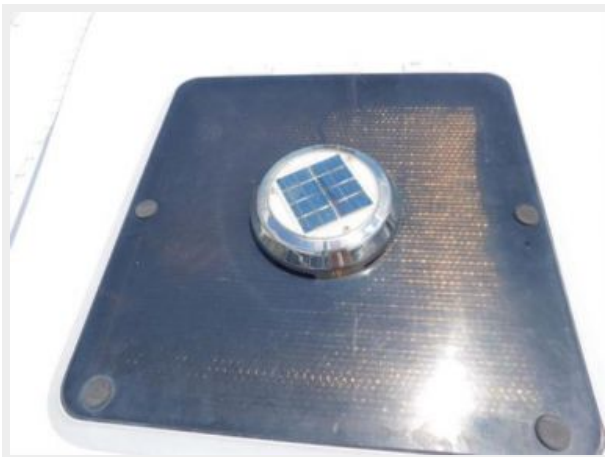
**Ritchie Back Lite Compass**



**Roller Furling**



**Solar Vented Hatch Cover**



**Fusion Speakers**



**Magma Grill with Cover**



**Doyle Lazy Jack with Zipper Pull**



**Lewmar 6 Spoke Folding Captains Wheel**



**Deluxe Captains Seat**



**Custom Cockpit Cushions and Sea Deck Flooring**



**Port Stern Rail Seat**



**Starboard Stern Rail Seat**



**Transom and Sea Deck Flooring**



### Step Transom and Sea Deck Flooring



### Battery Storage



### Line Brake



### Perko Battery Switch



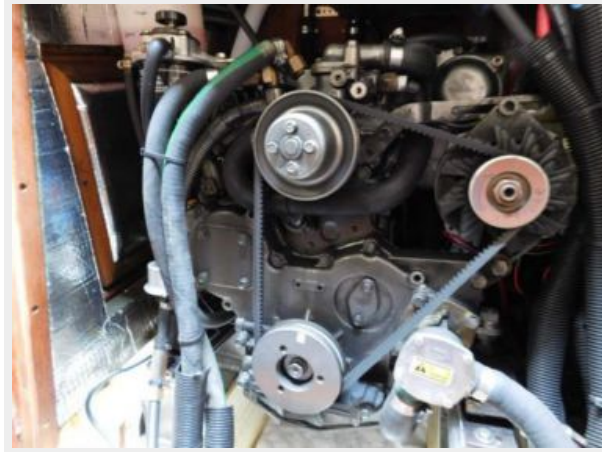
### Battery Switch



### Transmission



## Yanmar Front



---

# CONTACTS

---

Andrey Shestakov, leading yacht broker of the sales department of Shestakov Yacht Sales Inc. Shestakov Yacht Sales Inc., the official representative of the Miami/Fort Lauderdale FL headquarters.

---

## Contact details

---

Email: [andrey@shestakovyachtsales.com](mailto:andrey@shestakovyachtsales.com)

Web: [shestakovyachtsales.com/en/](http://shestakovyachtsales.com/en/)

---

## Telephones

---

USA: +1(954)274-4435

---

## Office hours

---

Monday – Saturday: **9:00 - 21:00** EDT

Sunday: **closed**

---

## Address

---



Harbour Towne Marina, 850 NE 3rd St,  
STE 213, Dania, FL 33004