

MY GIRLS LL — JEANNEAU



Builder: JEANNEAU

Year Built: 2011

Model: Cruising Sailboat

Price: PRICE ON APPLICATION

Location: Bahamas

LOA: 42' 0" (12.80m)

Beam: 13' 5" (4.09m)

Max Draft: 5' 0" (1.52m)

Cruise Speed: 8 Kts. (9 MPH)

Max Speed: 9 Kts. (10 MPH)

Our experienced yacht broker, Andrey Shestakov, will help you choose and buy a yacht that best suits your needs **My Girls II — JEANNEAU** from our catalogue. Presently, at Shestakov Yacht Sales Inc., we have a wide variety of yachts available on our sale's list. We also work in close contact with all the big yacht manufacturers from all over the world.

If you would like to buy a yacht **My Girls II — JEANNEAU** or would like help answering any questions concerning purchasing, selling or chartering a yacht, please call **+1(954)274-4435**

TABLE OF CONTENTS

TABLE OF CONTENTS	2
SPECIFICATIONS	3
Overview	3
Basic Information	3
Dimensions	3
Speed, Capacities and Weight	4
Accommodations	4
Hull and Deck Information	4
Engine Information	4
DETAILED INFORMATION	5
Accommodations	5
Deck	5
Mechanical and Electrical	5
Electronics and Navigation	6
Exclusions	6
Disclaimer	6
PHOTOS	7
CONTACTS	13
Contact details	13
Telephones	13
Office hours	13
Address	13

SPECIFICATIONS

Overview

My Girls II is an exceptionally well equipped 2011 Jeanneau 42 DS that suffered minimal damage with hurricane Matthew when it went thru Lucaya in the Bahamas.

Damage was limited to scratching on the hull but there was no water intrusion and no holes in the hull.

All repairs have been done by Knowles Marine in Lucaya.

I have recently inspected the boat and found her to be in very good condition.

All the photos are less than 2 weeks old.

She is equipped with twin helms, bow thruster, electric winches, air conditioning, Northern Lights generator (5kw) with 64 hours on it, Spectra Catalina 300 12v watermaker and good Raymarine electronics. The Yanmar 56 hp 4JH4AE diesel also has low hours.

This boat is not going to last long and I encourage buyers to call me for showing instructions.

Basic Information

Category: Cruising Sailboat

Model Year: 2011

Year Built: 2011

Country: Bahamas

Dimensions

LOA: 42' 0" (12.80m)

LWL: 38' 0" (11.58m)

Beam: 13' 5" (4.09m)

Max Draft: 5' 0" (1.52m)

Speed, Capacities and Weight

Cruise Speed: 8 Kts. (9 MPH)

Max Speed: 9 Kts. (10 MPH)

Displacement: 19676 Pounds

Water Capacity: 94 Gallons

Fuel Capacity: 34 Gallons

Accommodations

Total Cabins: 2

Total Berths: 2

Total Heads: 2

Hull and Deck Information

Hull Material: Fiberglass

Hull Configuration: Monohull

Engine Information

Engines: 1

Manufacturer: Yanmar

Model: 4JH4AE

Engine Type: Inboard

Fuel Type: Diesel

DETAILED INFORMATION

Accommodations

My Girls II has the 2 cabin /2 head interior arrangement. Forward is the V berth with its own head and storage lockers.

Moving aft is the main salon with a large table to starboard with seating for 6 and a bench seat to port with a leaf of the table that add two more guests at the table.

The well-equipped chart table is to port and has both the 12v and 110v electric panels The generator start and inverter control are there as well, along with the remote for the watermaker.

Across is an L shaped galley, well designed for cooking at anchor or while underway. Galley features include a two burner Eno stove with oven,twin stainless steel sinks with hot and cold pressure water, fridge and freezer, trash receptacle, numerous lockers and drawers and a locker for pots and pans. The cook will love the large amount of counter space and the handy splash guard in front of the sink.

The aft cabin berth is huge and has a light and airy feel to it. The aft head is quite large as well and has the shower in it.

The whole boat is fully air-conditioned.

Deck

My Girls II has modern and seductive lines that add flair to her 42' length. With her narrow bow and wide transom, she has a very good turn of speed. The deck is very clean with opening hatches for light and ventilation. The cockpit is protected by a dodger and connected bimini. She features twin leather covered helms with instrumentation right there on the pedestals and the bow thruster control along with the Morse controls at the starboard helm. The cockpit is comfortable and has a folding teak cockpit table,

Sailing **My Girls II** is a breeze with in- the mast furling on the main and roller furling on the headsail. There is an electric cabin top winch for pulling out and reefing the mainsail and two-speed electric sheet winches.

As with all Jeanneaus, there is a walk up transom with hot and cold shower.

Davits and outboard lift

Mechanical and Electrical

My Girls II has a Yanmar 4JH4AE diesel engine with low hours and a sail drive.

There is also a 5 kw Northern Lights generator with 64 hours on the meter.

There is a Magnum inverter, Spectra Catalina 300 Mark II watermaker

Electronics and Navigation

My Girls II is equipped with the following:

Raymarine E90W Chartplotter with AIS and Radar

Raymarine ST 70 multi-display on the port helm

Raymarine ST 70 multi-display and autopilot on the starboard helm

2 X Plastismo compasses

Bow thruster control

Matrix VHF radio with AIS and RAM for cockpit

Alpine stereo Sharp Aquios TV with Bose speakers

Exclusions

Owner's personal belongings.

Disclaimer

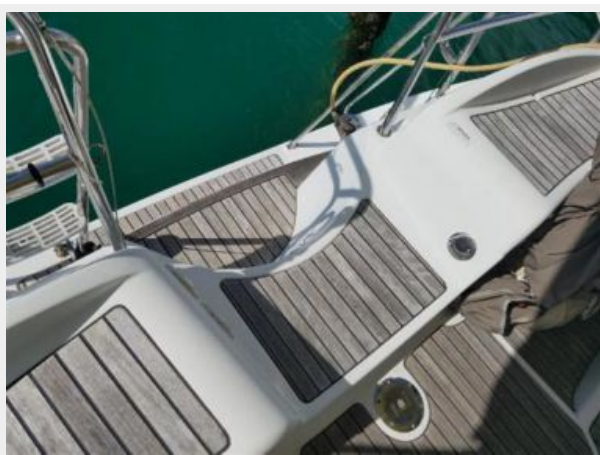
The Company offers the details of this vessel or yacht in good faith but cannot guarantee or warrant the accuracy of this information nor warrant the condition of the vessel. A buyer should instruct his representatives, agents, or his surveyors, to investigate such details as the buyer desires validated. This vessel or yacht is offered subject to prior sale, price change, or withdrawal without notice.

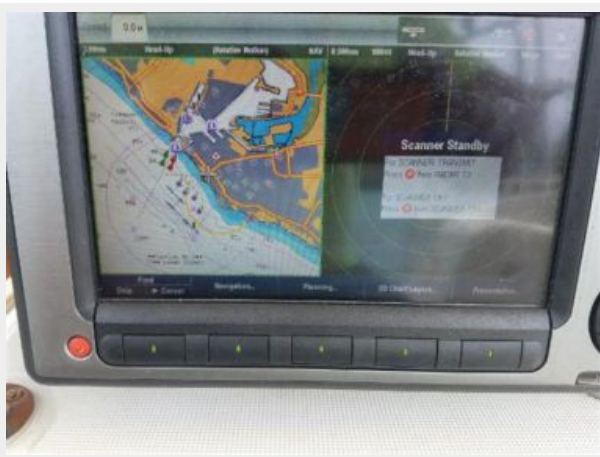
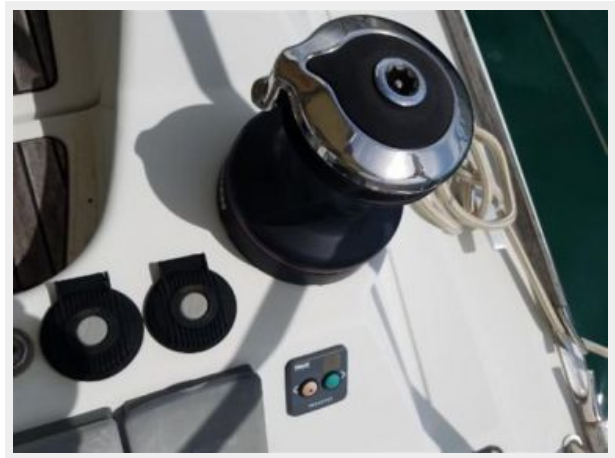
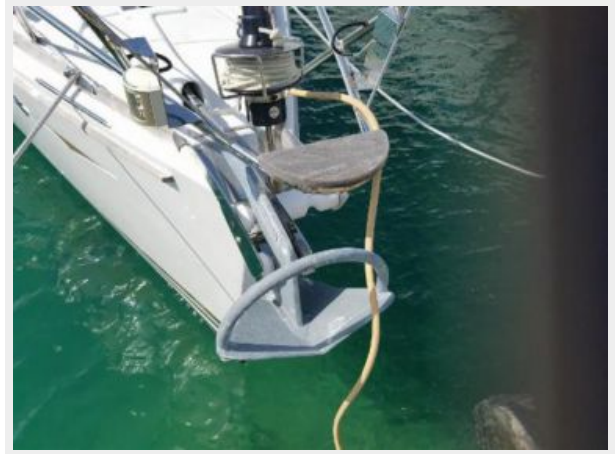
PHOTOS













CONTACTS

Andrey Shestakov, leading yacht broker of the sales department of Shestakov Yacht Sales Inc. Shestakov Yacht Sales Inc., the official representative of the Miami/Fort Lauderdale FL headquarters.

Contact details

Email: andrey@shestakovyachtsales.com

Web: shestakovyachtsales.com/en/

Telephones

USA: +1(954)274-4435

Office hours

Monday – Saturday: **9:00 - 21:00** EDT

Sunday: **closed**

Address



Harbour Towne Marina, 850 NE 3rd St,
STE 213, Dania, FL 33004