

47FT 1999 CATALINA 470 — CATALINA



Builder: CATALINA

LOA: 47' 0" (14.33m)

Year Built: 1999

Beam: 14' 0" (4.27m)

Model: Cruising Sailboat

Max Draft: 7' 0" (2.13m)

Price: PRICE ON APPLICATION

Location: United States

Our experienced yacht broker, Andrey Shestakov, will help you choose and buy a yacht that best suits your needs 47ft 1999 Catalina 470 — CATALINA from our catalogue. Presently, at Shestakov Yacht Sales Inc., we have a wide variety of yachts available on our sale's list. We also work in close contact with all the big yacht manufacturers from all over the world.

If you would like to buy a yacht 47ft 1999 Catalina 470 — CATALINA or would like help answering any questions concerning purchasing, selling or chartering a yacht, please call +1(954)274-4435

TABLE OF CONTENTS

TABLE OF CONTENTS	2
SPECIFICATIONS	5
Overview	5
Basic Information	5
Dimensions	6
Speed, Capacities and Weight	6
Accommodations	6
Hull and Deck Information	6
DETAILED INFORMATION	7
DIMENSIONS	7
ACCOMODATIONS	7
VESSEL WALK THROUGH	8
SALON and GALLEY	8
Hull and Deck	10
MECHANICAL	11
ELECTRICAL and ELECTRONICS	12
Sails and Rigging	14
Safety	15
Additional Equipment	15
OWNER EXCLUSION	16
Standard Equipment	16
Manufacturer Provided Description	18
Yacht History	18
Exclusions	18
Disclaimer	19
PHOTOS	20
At Anchor	20
Salon -	20

Galley	20
Galley-2	20
Galley-3	20
Salon - Settee	20
Salon-2	21
Captains chairs	21
Nav Station	21
Nav Instruments	21
Access to Aft Head	21
Salon facing aft	21
Aft head & Stall Shower	22
Aft head	22
Aft Cabin	22
Aft Cabin-2	22
Aft Cabin-3	22
Aft cabin-4	22
Aft Cabin-5	23
Forward Cabin	23
Forward Head & Shower	23
Forward Cabin-2	23
Forward head	23
Washer/dryer	23
Engine	24
Engine room	24
Cockpit	24
On the hard	24
View from aft	24
Keel	24
Feathering Propeller	25

Aft view of vessel	25
Cockpit Bimini	25
Cockpit - w/covers	25
Cockpit-2	25
Helm-1	25
Cockpit-3	26
2 helms	26
Manufacturer Provided Image	26
Helm-2	26
Manufacturer Provided Image	26
Manufacturer Provided Image	26
CONTACTS	27
Contact details	27
Telephones	27
Office hours	27
Address	27

SPECIFICATIONS

Overview

Serious offshore cruiser, Fast racing vessel, comfortable live-aboard, exciting day sailor or weekender (see history in full specs)

2 double cabins – 2 heads w/showers

Large Master suite aft w/ centerline queen – Guest double forward – en-suite

Spacious Salon with full galley, Nav station, Dinette

Exceptional headroom throughout – nearly 7 ft.

Bright and airy with numerous opening ports and overhead hatches

Fully Air Conditioned – Generator – Bow thruster

Huge cockpit with twin steering wheel design – large sugar scoop swim platform

New Bottom paint (May 2018)

Numerous upgrades – see full listing specs

This is an exceptional sailing vessel, and in excellent condition. She not only performs well, but is easily single handled. There are comfortable quarters for owner's party and crew, and her high headroom adds to the sensation of a large volume yacht, and can accommodate most sailors.

Click open full specs, and Call the listing broker immediately to see this vessel

Basic Information

Category: Cruising Sailboat

Sub Category: Sloop

Model Year: 1999

Year Built: 1999

Country: United States

Dimensions

LOA: 47' 0" (14.33m)**LWL:** 42' 0" (12.80m)**Beam:** 14' 0" (4.27m)**Max Draft:** 7' 0" (2.13m)**Clearance:** 67' 9" (20.65m)

Speed, Capacities and Weight

Displacement: 25750 Pounds**Water Capacity:** 133 Gallons**Holding Tank:** 40 Gallons**Fuel Capacity:** 145 Gallons

Accommodations

Total Cabins: 2**Total Heads:** 2

Hull and Deck Information

Hull Material: Fiberglass**Hull Configuration:** Monohull

DETAILED INFORMATION

DIMENSIONS

LOA ----47 ft ----- 14.32 meters

LWL ---- 42 ft ----- 12.8 meters

BEAM ----14 ft ----- 4.27 meters

DRAFT – 7 ft 10 in ----- 2.39 meters

DISPLACEMENT – 25,750 lbs. --11,680 kilo

BALLAST ----- 8,800 lbs. -- 3,992 kilo

BRIDGE CLEARANCE - 67 ft 9 in – 20.65 meters

TANKAGE: Fuel -- 145 gal. total -- 549 ltr

(2 - 42 gal. & 1 - 61 gal.)

- Approx. 775 nm range under power

Water --- 133 gal total -- 503 ltr

(4 tanks w/manifold system)

Holding – 1x 40 gal – 152 ltr

1x 36 gal – 136 ltr

Engine ----- Yanmar Diesel 75 HP 4JH2-THE (2580 Hrs)

Generator ----- 7.6 KW Mase Generator (1230 hrs)

Wind Generator

Solar Power

ACCOMODATIONS

2 double staterooms, 2 heads

Beautifully appointed standard Two-Stateroom interior is air conditioned throughout. This layout features a Guest stateroom forward and a large Owner's stateroom aft.

MASTER STATEROOM (Aft)

Island berth, with coil spring mattress

Hanging lockers on both sides

Drawers, Port and Starbd shelves, and nicely appointed storage containers.

The Owner's head has an electric macerating marine head, stainless steel

sink and separate shower stall. There is access to the head from both the owner's stateroom and main salon.

GUEST STATEROOM (Forward)

Large Pullman berth with coil spring mattress,

hanging lockers, shelves, and a large top access locker under the berth.

There is also a private head with separate shower, with a washer / dryer combo unit.

VESSEL WALK THROUGH

The extra-large cockpit may be entered either from the aft swim platform, or wide side decks through opening gated in the lifelines, Port and Starbd.

Descending the companionway stairs – the U-shaped Galley is to Port and forward facing Nav station to Starbd. A convenient day head is to Starbd immediately aft of the Nav Station.

Proceeding aft through the companionway, is the Master stateroom. This stateroom is full beam, and also has private access to the aft head.

Forward of the Nav Station, on the Starbd side are two swiveling Captain's chairs with a table in-between. Along the Port side, forward of the Galley is a comfortable U-shaped dinette area that easily seats six people – the table can be lowered to convert to two additional sleeping berths.

Forward along the centerline of the vessel is the Guest cabin with double pullman berth to Port, and storage lockers to Starbd.

A private head and shower is located forward of the guest Cabin, and there is a compartment forward for the washer/dryer.

SALON and GALLEY

Salon:

Ventilation is excellent with air conditioning, 8 opening hatches, 10 opening ports, and 5 variable speed Caframo fans (2015)

Manufacturer's twin recliners

Beautiful ultra leather interior upholstery (all cushions replaced 2011)

Satin varnish interior

Teak n holly sole

Teak magazine racks in salon, forward birth and aft stateroom

Galley: Full feature galley with microwave, propane stove & oven that even has the luxury of an exhaust fan hood that is vented to the exterior. The dual entry refrigeration is divided into freezer and refrigerator compartments and can be accessed from the top or the front. The front door has been upgraded and the entire refrigeration box insulated with 2" of extra closed cell foam keeping the run time to less than 50% in the tropics.

3 burner S/S Princess stove/oven, LPG, gimbaled with lock (solenoid, gauges, and hoses replaced 2015)

Stove hood with light & exhaust vent

Built-in microwave oven

12 V Adler Barbour front and top loading Refrigerator

12 V Frigaboard Capri 50F freezer (2018)

Separate pump for ice box discharge

Double S/S sinks with pressure washer

20 gal. water heater

Soft composite galley sole

Multi drawer bank

Built-in trash bin

Lots of storage including overhead cabinets with glass & dish storage

Cups, glasses, dishes, pots and pans and flatware (fully stocked galley)

Custom teak wood knife storage behind stove

Customized pot locker for easy storage of pots and pans

Hull and Deck

Forward Deck

Double anchor rollers

Anchor locker w/divider & scuppers

55 lb. Rocna anchor (2017) w 270' 5/16 HT chain

60 lb. CQR anchor w 175' 5/16 HT chain including swivels at both ends

Maxwell 1200 electric windlass w/foot switches

Fresh water wash down in anchor locker

COCKPIT: Cockpit has twin steering wheel design for easy movement around entire cockpit, and easy access to swim platform

Blue dodger with 30 mil strataglass and Sunbrella covers while not sailing

Blue Bimini

Blue connector with windows

External LED flood lights on arch (2015)

Cockpit stereo speakers

Radar arch with integrated dinghy lift that uses electric cabin winch to raise and lower the dinghy effortlessly in 60 seconds

Magma BBQ grill (2015) on stern rail with blue cover and dedicated aluminum

propane tank on radar arch

Aft deck lights mounted on arch light up entire cockpit and transom

300' spare rode

Twin steering stations permit unrestricted visibility on all points of sail and easy transom access.

32" Destroyer wheels (2) with blue cover

Richie FN-201 Compass (2)

Large cockpit with two leaf table offers ample seating for entertaining with blue cover

Closed cell cockpit cushions

Stern rail seats with raised bars and cushions for added comfort and safety

Ambassador Hot/cold cockpit shower (2018)

Aft swim step and walk-through stern w/transom boarding hand rails

Propane storage lockers and aluminum tanks (2009 & 2018; solenoids, pressure gauges, and hoses - 2015)

Dockside water connector

MECHANICAL

Yanmar Turbo diesel 4JH2-THE - 75 HP total hours-2580

Customized twin diesel filters operate independently for easy switching of tanks and fuel management

(one can move fuel from one tank or the other and use one of two fuel filters in any combination with any tank)

Morse single lever shifter / throttle

3 blade Autoprop automatic feathering propeller

3 blade bronze propeller spare

Dual independent, pedestal steering stations with engine controls on starboard side.

Spectra Newport 12 V water maker with MPC 5000 controller producing 13–16 GPH plus spare

filters and cleaning and pickling solutions

Raritan manual pump head forward

Jabsco 1-liter accumulator tank (2018)

Groco raw water strainers (Auxiliary 1999, Genset 1999, AC 2018, &

Water maker 2018)

Customized sound insulating material in engine compartment to reduce engine noise

Wesmar bow thruster (rebuilt 2015)

Bilge blower & ventilation system

2 Marine Aire AC units with reversal cycle heat (16,000 BTU for main salon and forward birth and 7,000 BTU for aft cabin)

Espar Hydronic diesel heating system for cold Canada and Maine cruising including hot water heat exchanger

Splendide Comb-o-matic 2000 washer/dryer

PLUMBING:

Forward & aft waste tank systems (new macerator pumps in each installed 2017)

Jabsco electric macerating head aft

New Jabsco fresh water pump (2018 & spare 2018)

ELECTRICAL and ELECTRONICS

Electrical:

INTERIOR

Batteries:

1 AGM Group 24 auxiliary start battery (2017)

3 AGM 8D marine batteries for the house bank (2014)

1 AGM 8D marine battery for bow thruster (2014)

1 Group 24 Genset start battery (2014)

ACR battery combiner to charge engine battery

3000 W Xantrez inverter/charger with 2000R Link remote control

LED lighting (2015)

Electrical (Exterior)

Two 130 W Kyocera solar panels on top of arch with new controller (2018)

Kiss 4 - 25 amp wind turbine with controller (rebuilt 2017)

LED Tri Color at masthead with photo sensitive anchor light

TV antenna mounted on top of mast

Wirie AP WIFI booster and local hot spot for boat mounted on arch

Numerous 30-amp shore power cords totaling 192 feet in length

Four 30 A to 110 V adaptors

Two 50 A to 30 A adaptors

Electronics:

Garmin 942 XS Chart Plotter (2018) with navigation software including

cartography for US waters,

Bahamas, & Caribbean

Raymarine RL80CRC chart plotter centrally mounted at helm with navigation software including cartography for Vancouver, Canada to Panama Canal, Western Caribbean, Eastern Caribbean, East Coast of US and parts of Gulf of Mexico

Raymarine 2 KW radar mounted on arch (self-leveling)

Raymarine ST 6002 autopilot and course computer w/gyro

Raymarine ST 60 wind Instrument

Raymarine ST 80 depth

Raymarine ST 80 speed

Raymarine 210 VHF radio at nav station

Raymarine RayStar 120 GPS

Raymarine multi-function display in cockpit (2)

Autohelm Masterview at nav station

Icom 802 SSB with AT140 auto tuner and Pactor II modem and Dynaplate
ground

Icom IC-72 handheld

Standard Horizon Matrix AIS+ GX 1250 mounted in the cockpit (2011)

ENTERTAINMENT

Sony CDX-6T300 AM/FM/ cassette/receiver stereo

Sony 10 CD changer

Sony DVD player

Bose speakers

Vizio 28" flat screen TV mounted on starboard between captain's chairs on
a moveable hinge

Sails and Rigging

Easy sail plan, with all lines leading to the cockpit for safety and ease of

In-mast furling main with vertical battens (2011) Mack Sail

110% roller furling Jib – 9 oz UK Sail completely refurbished, Sunbrella cover (2013)

Cruising spinnaker with dousing sock, sheets and blocks (new condition)

Spinnaker pole mounted on mast – 4" aluminum with carbon fiber adjustable 19ft to 27ft

Double spreader mast

Boom brake with line lead aft to rope clutch in cockpit

Main sail sheet rope clutch on starboard for safe sailing adjustments

Continuous main sail sheet with jam cleat on port side

Adjustable Genoa lead cars (blocks) from cockpit

2 Lewmar #66 two speed primary winches with blue covers

1 Lewmar #44 two speed halyard winch Port

1 Lewmar OP2 electric halyard winch starboard (cleaned & lubricated 12/10/17)

Sail Area:

IJPE : 1010.25 sq ft I : 58.25 ft J : 17.00 ft P : 51.50 ft E : 20.00 ft Working Sail Area : 1010.00 sq ft

Safety

Emergency tiller

EPIRB: ACR 406 (new 12/19/17)

Life jackets

Jack lines

Padeye (folding D rings) in cockpit and companionway for secure passage making

Viking 6-man life raft, deck mounted (recertified 12/19/17)

Man overboard pole with horseshoe buoy, light, and drogue

Lifesling

Horseshow life preserver

Custom mounted grab rails on center console

Additional Equipment

All owners & user manuals

Several tool bags for plumbing, electrical, and engine maintenance

Baja fuel filter

Water filter for filling water at the dock

Block and tackle harness system to allow solo ascent up the mast

Bosuns chair

Dishes and linens

Shop vacuum

OWNER EXCLUSION

Owner's personal effects

AB 9.5 aluminum hull RIB inflatable (2013) - Negotiable

15 H P Johnson two stroke outboard motor (1998 - tuned up 11/15/17) - negotiable

Standard Equipment

Catalina 470 Specifications - Standard Equipment Spar and Rigging - Double spreader masthead rig - Full batten mainsail, dacron with two reef points. - Ball bearing mainsail slides on mast track. - 135% Furling genoa, dacron with UV protection. - Complete standing and running rigging. - Internal pre-stretched dacron rope halyards. - PVC wiring conduit with messenger in mast. Sail Handling and Equipment - Two, two speed self-tailing primary winches. - Two speed self-tailing halyard winch, port. - Electric main halyard winch, starboard - Halyards and vang control lines led aft. - Port and starboard line storage compartments. - One 10" winch handle. - Mainsheet traveler with car and multi-purchase adjuster system. - Dutchman mainsail flaking system. - Inboard genoa tracks with ball bearing cars. - Single line mainsail reefing system. - Boom vang, stainless steel with multi-purchase adjustment. Propulsion, Steering Controls - Dual station, independent pedestal controlled steering. - Compass with light at port and starboard steering stations. - Centrally mounted engine instruments. - Single lever engine controls on starboard side. - Steering brake in wheel hub. - Twin stainless destroyer wheels. - Emergency tiller system. - Fresh water cooled 75 h.p. turbo diesel engine with reduction gear. - Sea water strainer on cooling inlet. - 3-bladed bronze propeller. - Bilge blower and ventilation system. Features And Deck Hardware - One piece fiberglass deck, white with grey two-tone. - Twin helm cockpit with contoured coamings. - Fiberglass cockpit table with two leaves. - Walk through stern with transom boarding platform and storage lockers. - Stern boarding ladder with contour treads. - Double lifelines with gates port and starboard. - Mooring cleats, two fore and two aft. - Midship springline cleats. - Midwatch blue and silver sheer stripe. - Molded-in gel coat waterline, midwatch blue. - Large double anchor rollers on foredeck. - Electric anchor windlass, power up and down controls, with foot switches. - Anchor locker forward with divider and two scuppers. - Stainless steel hand rails on cabin top. - Cockpit cushions. - Stern rails with observation seats, port and starboard, with cup holders. - Molded-in landing for dodger. - Anodized aluminum toe

rails. Interior - Satin varnished finish with gloss trim on interior wood surfaces. - Navigation station with chart table, and built-in upholstered contoured seating - Owners stateroom aft with queen size island berth, hanging lockers, drawers, vanity desk with seat and private entrance to aft head. - Main saloon features large dinette, gloss finished dining table to port, with settee seating starboard. - Guest stateroom forward features large pullman berth, hanging lockers, shelves and private head with shower. - Large top access locker under berth. - Inner spring mattresses on fore and aft berths with custom fitted sheets - Teak and holly veneer sole. - Teak veneer bulkheads and teak trim. - Entertainment center with color TV - VCR combo, remote control, 12 volt inverter for TV, marine antenna, shore cable connector, Sony cassette- receiver - CD controller, 10 CD changer, remote control, two Bose speakers in main salon, with waterproof speakers in the cockpit. Galley - Refrigeration system, DC powered with divided refrigerator-freezer compartments. - Microwave oven, built-in, AC powered. - 3 burner stainless steel stove with oven. - LPG, gimbaled with lock. - Stove hood with light and power vent to exterior. - Separate pump for ice box discharge. - Large top loading locker. - Soft composite galley sole. - Multi drawer bank. - In-counter trash chute to under counter bin. - Overhead cabinets with glass and dish storage. Plumbing Systems - Pressure water distribution with filter at pump. - Manifoldded tankage with cleanouts. - 20 gal. hot water heater with engine heat - exchanger and 115V element. - Macerator pumps for overboard discharge of holding tanks, two independent waste systems. - Electric head aft, manual head forward. - Complete head compartment forward and aft with separate shower compartments. - Hot and cold deck shower at transom. - Selection manifold for five water tanks. - Diesel fuel - 84 gallons in two separate aluminum tanks with selection valves and filters. - Dockside water pressure system. Electrical System - Raytheon ST80 instruments package with Masterview at navstation, two Multi views and Wind display in cockpit. - Standard Intrepid VHF radio: dual station with RAM microphone. - Two heavy duty 12 volt DC marine batteries in service house bank. - Marine battery charger, multi-bank automatic. - International running lights. - 115V 30 amp shore power and adapter. - Masthead, foredeck and steaming lights. - 12 volt DC lighting throughout. - Custom 115V AC - 12V DC elec. distribution panels, separate main breaker panel and windlass control. - Circuit breaker for AC-DC electrical circuits. - Ground fault circuit protection. - AC duplex receptacles throughout. Catalina 470 Optional Equipment - Twin aft cabins, in lieu of standard - Wing keel - Fin keel - Cockpit dodger, side panels and window covers - Bimini, extended without cockpit dodger - Cockpit dodger, side panels, window covers and bimini with connector panel - Teak cockpit sole grate - Canvas package with (1) mainsail cover, (2) wheel covers, (2) compass covers, (1) cockpit table cover and (4) winch covers - Cockpit Cushions, Vinyl, White with Grey Piping - Cockpit cushions, with closed cell foam, in lieu of standard - Leather wrapped wheels, in lieu of standard. - Ultraleather upholstery in main cabin, in lieu of standard - Twin reclining swivel lounge chairs, in lieu of settee in main cabin - Interior Decor Package - Mast with internal mainsail furling system and furling mainsail, in lieu of standard - Tall rig mast, in lieu of standard - Diesel generator with fresh water cooling, sound shield, interface switching panel and controls - Safety and equipment package - Air conditioning and heating, reverse cycle system with three units with individual controls - Bow thruster, 7 h.p. Electronics Packages - Chartplotter A. Raytheon RL70RC radar-ready 7" display with Ray 112 GPS antenna - Radar antenna: Raytheon 2kw dome and cable, mast mounted. (Requires option W1 8804 and W1 8805) - Navstation display: Raytheon RL70 second station for chartplotter - radar (Requires option W1 8804) - Chartplotter B. Raytheon 620 10" display with

Ray 112 GPS antenna - Raytheon ST7000 Type 2 autopilot system - Second TV - VCR with dedicated inverter in aft cabin - Heart 2000 watt inverter, with 100 amp battery charger and Freedom remote panel, in lieu of standard battery charger Sails - 155% Furling genoa, dacron with UV. protection and sheets, in lieu of standard 135% furling genoa (for Tall rig) - Poleless cruising spinnaker with sheets, 1.5 oz. nylon, specify color (for Tall rig) - Shipping and storage cradle, steel

Manufacturer Provided Description

The challenges of extended offshore cruising have been met with a display of strength, innovative design, and engineering that clearly define the Catalina 470. A unique, structural fiberglass grid is bonded to the hull and provides both strength for the hull and a massive foundation for securing bulkheads, equipment, engine, and tanks. Below there is a new standard of functionality and comfort. The galley is remarkable in its amount of cold, consumables, and equipment space. The generous deck beam is carried well aft providing for an expansive cockpit with twin steering stations and large master stateroom below. The luxurious main salon boasts adjustable arm chairs and deep banquet seating available in soft, durable Ultraleather. The nav station contains all necessary readouts, as well as a swivel TV and VCR. For easy maintenance, centrally located equipment clusters offer easy access to all pumps, valves, and filters. A washer - dryer combination is sensibly located in the shower area of the forward head. At every turn, equipment and systems have been engineered to the most demanding bluewater specifications: the first ever articulated traveler rotates fore and aft, spreading the load evenly over bearing surfaces for smoother main sheet handling and more precise trimming. Custom cheek blocks and raised genoa tracks guide sheets straight aft to large, powerful winches. Moreover, a powerful, double spreader rig and generous sail plan are balanced to deliver a remarkable combination of high performance and ease of handling.

Yacht History

This vessel was originally purchased in 2000 and was completely customized for long term live aboard cruising. She was sailed from Victoria, BC, Canada to San Francisco, CA in 2000 where she was birthed and outfitted. In 2006 she left for the Caribbean, first based in Mexico for two years, then through the Panama Canal, to arrive in Hampton, VA where she was based for two years. In 2011 she sailed to the Caribbean where she was based in Grenada.

Subsequently she was based in St Petersburg, Florida for several years and then left to cruise the Bahamas and Caribbean.

She is now in Ft Lauderdale and available for sale

Exclusions

Owner's personal belongings.

Disclaimer

The Company offers the details of this vessel or yacht in good faith but cannot guarantee or warrant the accuracy of this information nor warrant the condition of the vessel. A buyer should instruct his representatives, agents, or his surveyors, to investigate such details as the buyer desires validated. This vessel or yacht is offered subject to prior sale, price change, or withdrawal without notice.

PHOTOS

At Anchor



Salon -



Galley



Galley-2



Galley-3



Salon - Settee



Salon-2



Captains chairs



Nav Station



Nav Instruments



Salon facing aft



Access to Aft Head



Afgt head & Stall Shower



Aft head



Aft Cabin



Aft Cabin-2



Aft Cabin-3



Aft cabin-4



Aft Cabin-5



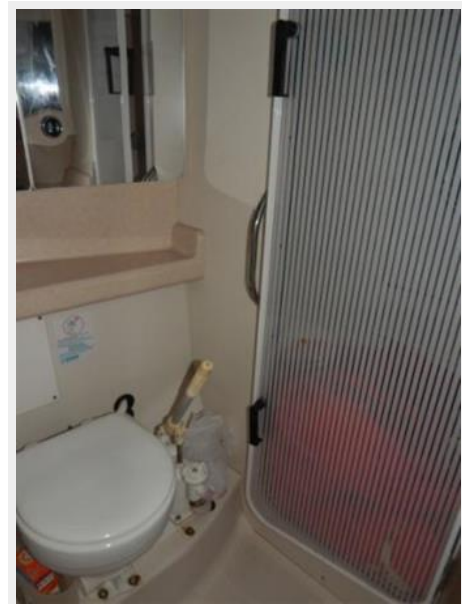
Forward Cabin



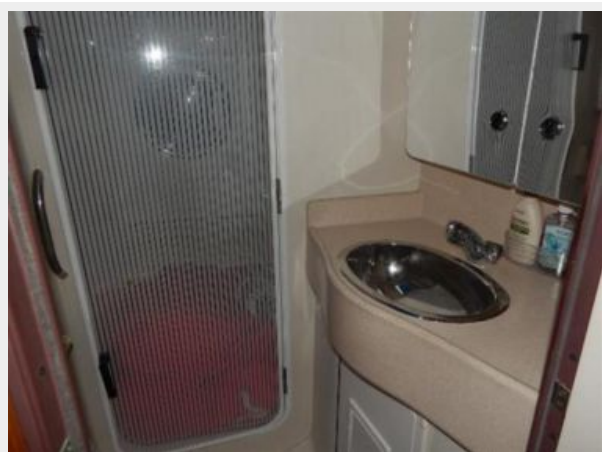
Foirward Cabin-2



Forward Head & Shower



Forward head



Washer/dryer



Engine



Engine room



Cockpit



On the hard



View from aft



Keel



Feathering Propelle



Aft view of vessel



Cockpit Bimini



Cockpit - w/covers



Cockpit-2



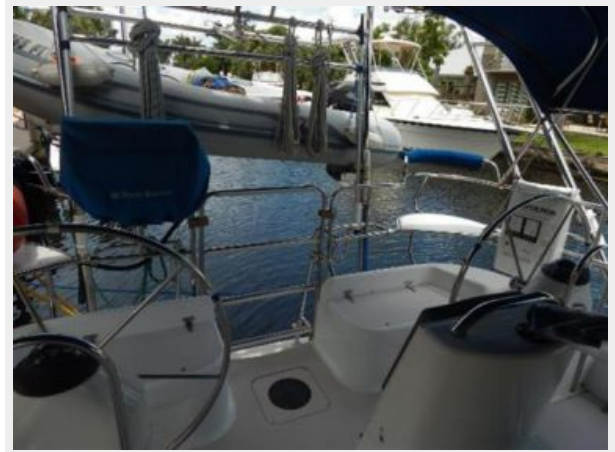
Helm-1



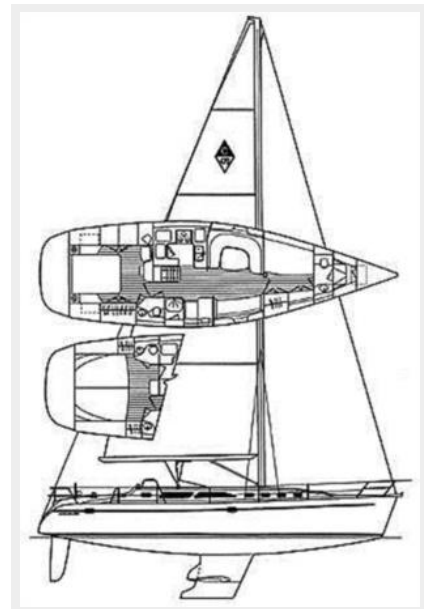
Cockpit-3



2 helms



Manufacturer Provided Image



Helm-2



Manufacturer Provided Image



Manufacturer Provided Image



CONTACTS

Andrey Shestakov, leading yacht broker of the sales department of Shestakov Yacht Sales Inc. Shestakov Yacht Sales Inc., the official representative of the Miami/Fort Lauderdale FL headquarters.

Contact details

Email: **andrey@shestakovyachtsales.com**

Web: shestakovyachtsales.com/en/

Telephones

USA: **+1(954)274-4435**

Office hours

Monday – Saturday: **9:00 - 21:00 EDT**

Sunday: **closed**

Address



Harbour Towne Marina, 850 NE 3rd St,
STE 213, Dania, FL 33004