

NANITO — BENETEAU



Builder: BENETEAU

Year Built: 2000

Model: Daysailer

Price: PRICE ON APPLICATION

Location: United States

LOA: 41' 0" (12.50m)

Beam: 13' 0" (3.96m)

Max Draft: 5' 7" (1.70m)

Cruise Speed: 8 Kts. (9 MPH)

Max Speed: 8 Kts. (9 MPH)

Our experienced yacht broker, Andrey Shestakov, will help you choose and buy a yacht that best suits your needs **NANITO — BENETEAU** from our catalogue. Presently, at Shestakov Yacht Sales Inc., we have a wide variety of yachts available on our sale's list. We also work in close contact with all the big yacht manufacturers from all over the world.

If you would like to buy a yacht **NANITO — BENETEAU** or would like help answering any questions concerning purchasing, selling or chartering a yacht, please call +1(954)274-4435

TABLE OF CONTENTS

TABLE OF CONTENTS	2
SPECIFICATIONS	3
Overview	3
Basic Information	5
Dimensions	5
Speed, Capacities and Weight	5
Accommodations	5
Hull and Deck Information	5
PHOTOS	6
CONTACTS	18
Contact details	18
Telephones	18
Office hours	18
Address	18

SPECIFICATIONS

Overview

Instruments

- Autopilot - Raymarine ST 6002
- ICOM VHF ICM 504 situacin 2 Mic in galley and cockpit
- HAND VHF 155 RAYMARINE FLOATING.
- Depthfinder - Raymarine
- Speed - Raymarine ST60 Tridata
- GPS -GARMIN
- Compass
- Chartplotter - GPS - MAP GARMIN 2210 with USA and All Caribbean Chart
- SONY DIGITAL MEDIA PLAYER, AM/FM BLUTOOTH IPOD IPHONE 2016
- TV LED 24" with DVD incorporated 110 volt/12 volt.

Mechanical

- 12V/110V electrical system
- Inverter - POWER FACTORY
- NEW Batteries (3): (1) starter 80 Amp (2) SRM 4GEL 200 Amp 2016
- Battery Charger PROTEC 1240 i (Advanced Fully Automatic 4 Stage on)
- MAX CHARGE MC 614 REGULATOR (Multi stage Marine Regulator, with 2 Bank temperature sensor)
- (2) NEW Heads
- Battery Monitor, XANTREX LINK 20
- AIR GENERATOR AEROGELM LVM612 12volt
- NEW Alternator (BALMAR 100 Amp)

Galley

- Force 10 propane oven and stove w/ (2) burners with solenoid, 2 Gas Tank Aluminum
- Two-compartment Adler/Barbour Freezer/Refrigerator with top and side access (With new compressor 2014)
- Pressure water
- Water heater SEAWARD(6) gal.(110 volt and coolant line)
- Double stainless sinks
- Blender OSTER
- Pots dishes glasses and all top quality kitchen implements
- Pressure laminate countertops
- Ample built-in drawer space and storage

Sail Equipment

- Sloop
- Wheel steering
- 826 sq. ft. sail area
- Sail material - Challenge Dacron
- Roller furling JIB
- Main sail
- 100% Jib new without use
- 140% Jib 2017
- LEWAMAR OCEAN ELECTRIC WINCHES 50 EST
- 50 CST primary winches
- 44 CST port/starboard winch
- 44 CST halyard winch
- Hatch covers
- Instrument covers
- BBQ Cover
- NEW running

Tanks

Fresh Water Tanks: (151 Gallons)

Fuel Tanks: (39 Gallons)

Holding Tanks: 2 (15 Gallons)

Additional

- Deshumificater
- WEBASTO MARINE A/C coold & Hot 16,000 BTU new 2016
- Water Maker AQUA MARINE new Membrane 2016.
- Lewmar hatches (7)
- Lewmar opening ports (10)
- CAFRAMO 12 volt fans (6)
- Switlick 6 man offshore liferaft
- Weems & Plath barometer & clock
- 406 EPRIB New 2016
- BBQ gas propane.
- Tricolor LED masthead w/ strobe
- LED Ligth in all the boat
- NEW 9' inflatable with NEW engine MERCURI 8HP (2017)
- LIFE RAFT PLASTIMO 6 P (2015 Inspection)

DUTY NOT PAID!

Slip available with marina Owner approval. Please contact our office for more information and an appointment to see this boat.

Basic Information

Category: Daysailer

Model Year: 2000

Year Built: 2000

Country: United States

Dimensions

LOA: 41' 0" (12.50m)

LWL: 36' 11" (11.25m)

Beam: 13' 0" (3.96m)

Max Draft: 5' 7" (1.70m)

Speed, Capacities and Weight

Cruise Speed: 8 Kts. (9 MPH)

Max Speed: 8 Kts. (9 MPH)

Displacement: 17196 Pounds

Water Capacity: 151 Gallons

Holding Tank: 15 Gallons

Fuel Capacity: 39 Gallons

Accommodations

Total Cabins: 3

Total Berths: 6

Total Heads: 2

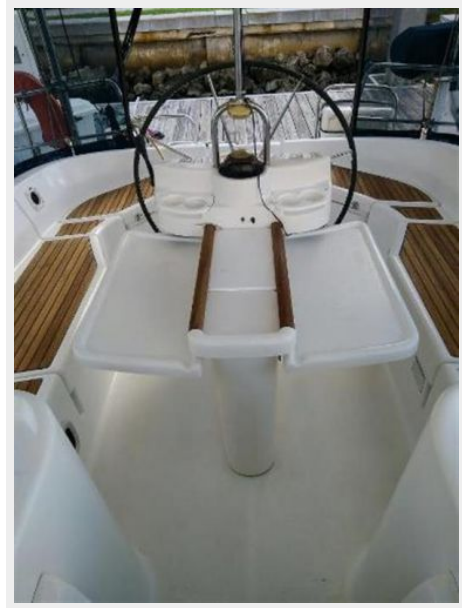
Hull and Deck Information

Hull Material: Fiberglass

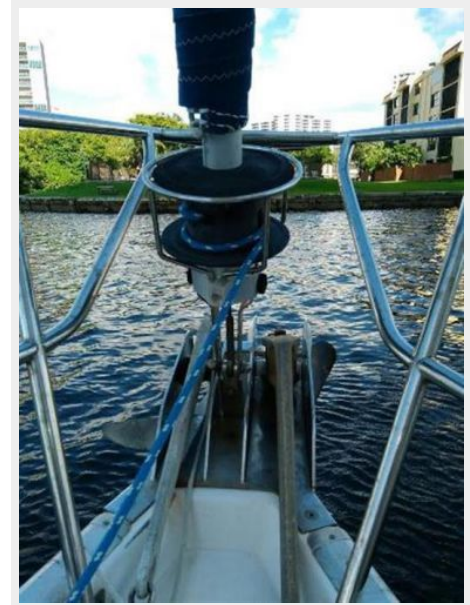
Hull Configuration: Monohull

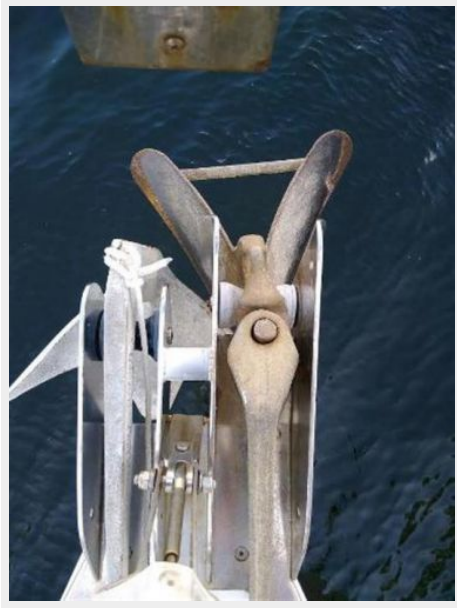
PHOTOS



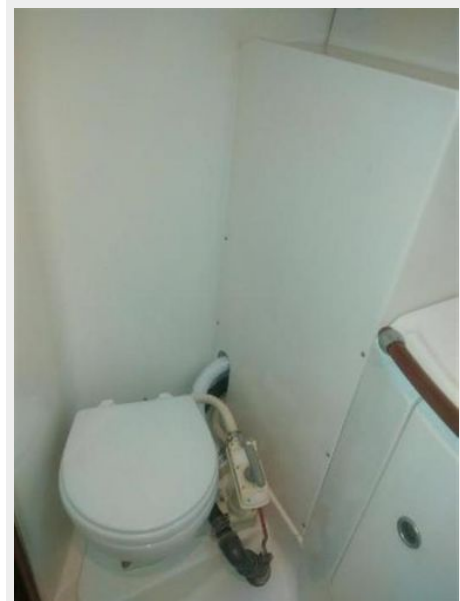
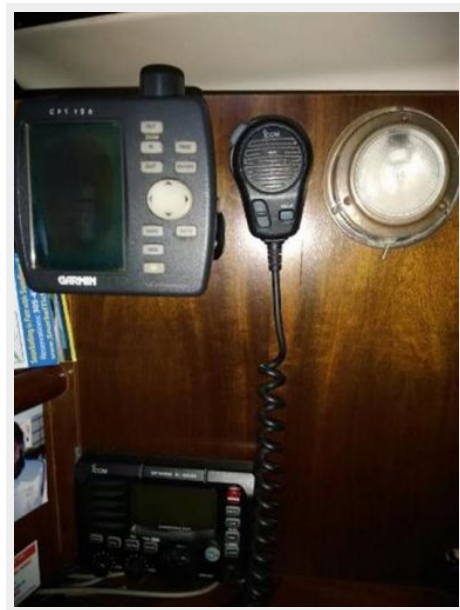










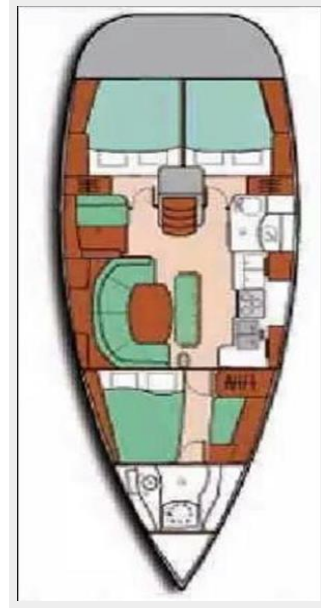












CONTACTS

Andrey Shestakov, leading yacht broker of the sales department of Shestakov Yacht Sales Inc. Shestakov Yacht Sales Inc., the official representative of the Miami/Fort Lauderdale FL headquarters.

Contact details

Email: andrey@shestakovyachtsales.com

Web: shestakovyachtsales.com/en/

Telephones

USA: +1(954)274-4435

Office hours

Monday – Saturday: **9:00 - 21:00** EDT

Sunday: **closed**

Address



Harbour Towne Marina, 850 NE 3rd St,
STE 213, Dania, FL 33004