

FRANSEA II — BERTRAM



Судостроитель: BERTRAM

Год постройки: 2011

Цена: **ЦЕНА ЯХТЫ ПО ЗАПРОСУ**

Местонахождение: United States

Длина общая: 41' 0" (12.50m)

Ширина: 14' 6" (4.42m)

Макс. осадка: 4' 0" (1.22m)

Купить **Fransen II — BERTRAM** а также выбрать подходящую вам яхту из нашего каталога яхт вам поможет опытный яхтенный брокер Андрей Шестаков. На сегодняшний день компания **Shestakov Yacht Sales Inc.** имеет большое количество яхт в собственном списке продаж, а также тесно сотрудничает со всеми крупными яхтенными производителями по всему миру.

Для того чтобы купить яхту **Fransen II — BERTRAM** а также проконсультироваться по любому вопросу связанному с покупкой, продажей, чартером яхт позвоните по телефону **+7(918)465-66-44**.

ОГЛАВЛЕНИЕ

ОГЛАВЛЕНИЕ	2
ХАРАКТЕРИСТИКИ	6
Обзор	6
Основная информация	7
Размеры	7
Скорость, вместимость и масса	7
Размещение	7
Корпус и палуба	7
Информация о двигателе	8
ПОДРОБНОЕ ОПИСАНИЕ	9
Vessel Walkthrough	9
Salon	10
Galley	10
Master Stateroom	11
MASTER STATEROOM EN-SUITE HEAD w/SEPARATE SHOWER STALL	11
GUEST STATEROOM	11
Guest Head	12
Flybridge	12
HELM	13
COCKPIT AND DECK	13
Mechanical	14
Electrical	14
Disclaimer	15
Исключения	15
Отказ от ответственности	15
ФОТОГРАФИИ	16
Salon	16
Galley	16

Master Stateroom	16
Flybridge Helm	16
Layout	16
Layout	16
Salon	17
Layout	17
Dinette	17
Dinette	17
Galley	17
Galley	17
Galley	18
Galley	18
Washer/Dryer	18
Electrical Panel	18
Salon Stereo	18
Master Stateroom	18
Master Stateroom	19
Master Stateroom	19
Master Stateroom	19
Master Stateroom	19
Master Stateroom	19
Master Stateroom	19
Master Head and Shower	20
Master Head and Shower	20
Master Shower	20
Guest Cabin	20
Guest Cabin	21
Guest Cabin	21
Guest Shower	21

Guest Head and Shower	21
Flybridge Helm	22
Flybridge	22
Hour Meters 5.7.18	22
Flybridge	22
Cockpit	22
Cockpit	22
Bertram	23
Side Deck	23
Foredeck	23
Pulpit and Ground Tackle	23
Port Engine	23
Starboard Engine	23
Engine Room	24
Spare Props	24
Engine Room	24
Port Eng Serial #	24
Stbd Eng Serial #	24
45	24
46	25
47	25
48	25
49	25
50	25
51	25
52	26
53	26
54	26
55	26

56	26
57	26
58	27
59	27
60	27
61	27
62	27
63	27
КОНТАКТЫ	28
Контактная информация	28
Телефоны	28
Время работы	28
Адрес	28

ХАРАКТЕРИСТИКИ

Обзор

Fransia II is a rare find! Introduced in 2007, the 410 Bertram blended Bertram's hard core offshore fishing heritage with modern technology and design to produce a fabulous 2 stateroom 2 head layout and a heavy displacement modified deep-V hull that is quick to plane and offers a great ride in rough seas. She well equipped and in great condition!

Twin Cummins QSC 8.3 600 HP 700 Hrs

15.5 KW Kohler Generator w/ 929.8 Hrs

2 Staterooms & 2 Heads

Satin Cherry Interior w/ Ultraleather Upholstery

Salon Sleeper Sofa

3 Side Enclosed Flybridge w/Hard Top

Bow Thruster

Cummins Electronic Single Lever Controls

Cummins Smartcraft Electronic Engine Displays

Eskimo Ice Machine

700 GPD Watermaker

Oil Change System

Reverso Fuel Polishing System

Racor Water Separating Fuel Filters

Cruiseair Reverse Cycle Air Conditioning

50 amp Shore Service w/ Glendenning Cablemaster

Underwater Lights

Основная информация

Подкатегория: Катер для спортивной рыбалки

Модельный год: 2011

Год постройки: 2011

Страна: United States

Верх: Hardtop

Открытая палуба мостика: Да

Размеры

Длина общая: 41' 0" (12.50m)

Ширина: 14' 6" (4.42m)

Макс. осадка: 4' 0" (1.22m)

Длина привального бруса: 41' 0" (12.50m)

Скорость, вместимость и масса

Водоизмещение: 43211 Pounds

Вместимость воды: 120 Gallons

Объем топливного бака: 540 Gallons

Размещение

Всего кают: 2

Всего коек: 4

Спальные места: 5

Корпус и палуба

Материал корпуса: Fiberglass

Материал палубы: Fiberglass Sandwich

Комплектация корпуса: Deep Vee

Цвет корпуса: White

Информация о двигателе

Двигатели: 2

Производитель: Cummins

Модель: QSC 8.3 600 HO

Тип двигателя: Inboard

Тип топлива: Diesel

ПОДРОБНОЕ ОПИСАНИЕ

Vessel Walkthrough

Fransia II is a rare find! Introduced in 2007, the 410 Bertram blended Bertram's hard core offshore fishing heritage with modern technology and design to produce a fabulous 2 stateroom 2 head layout and a heavy displacement modified deep-V hull that is quick to plane and offers a great ride in rough seas. She well equipped and in great condition!

Twin Cummins QSC 8.3 600 HP 683 Hrs

15.5 KW Kohler Generator w/ 890 Hrs

2 Staterooms & 2 Heads

Satin Cherry Interior w/ Ultraleather Upholstery

Salon Sleeper Sofa

3 Side Enclosed Flybridge w/Hard Top

Bow Thruster

Cummins Electronic Single Lever Controls

Cummins Smartcraft Electronic Engine Displays

Eskimo Ice Machine

700 GPD Watermaker

Oil Change System

Reverso Fuel Polishing System

Racor Water Separating Fuel Filters

Cruiseair Reverse Cycle Air Conditioning

50 amp Shore Service w/ Glendenning Cablemaster

Underwater Lights

Fransia II is a beautiful 41 Bertram that has always been kept in excellent condition. Whether you fish or cruise, the 2 stateroom 2 head layout with salon sleeper sofa is ideal. Her lush satin finish cherry interior with Ultraleather wall & ceiling panels is bright, spacious and beautifully decorated. She has the seakeeping ability and ride you expect from a Bertram.

Salon

The salon is bright & open with the L-shaped settee aft to port and raised dinette forward to starboard.

Satin finish cherry interior

Ultraleather upholstery

Salon carpet

L-shaped settee aft to port w/sleeper sofa

Ottoman with storage

Rod storage

Raised dinette forward to starboard

Entertainment system, TV & electrical panel aft to starboard

Sharp 31" salon TV

Denon AV receiver and DVD player

Galley

Forward to port and down one step is the spacious galley with beautiful satin finish cherry cabinetry, teak & holly sole, and Corian counter tops.

Teak & Holly sole

Satin finish cherry cabinets

Sub Zero undercounter refrigerator

2 Burner Princess stove

Sharp convection microwave

Corian countertops

Pantry storage in cabinets and under sole

Washer/dryer combo

Master Stateroom

The master stateroom is forward with a centerline pedestal berth.

Pedestal style centerline berth

Cedar lined closets port and starboard

Drawer storage below berth

Cabinets port and starboard

Deck hatch w/ Ocean Air sunshade/screen

Privacy door

TV/DVD player/stereo

MASTER STATEROOM EN-SUITE HEAD w/SEPARATE SHOWER STALL

Satin finish cherry cabinetry

Teak & holly sole

Vanity with Corian counter tops & sink

Mirrored medicine cabinet

Mirrored headliner

Tecma electric head

Stall shower

Deck hatch w/ Ocean Air shade/screen

GUEST STATEROOM

Twin berths side by side
Cedar lined hanging locker
Drawer storage
Separate AC control
TV/DVD/CD
Privacy door
Stain finish cherry paneling
Ultraleather wall covering

Guest Head

Corian counter top
Vanity with sink
Tecma electric toilet
Fiberglass nonskid floor
Folding shower enclosure
Ocean Air shade/screen for deck hatch
Privacy door

Flybridge

Half tower with hard top and 3 side enclosure w/U zips
Pompanette helm and companion chairs
(6) Rocket Launchers
Flybridge electric table in U shaped seating area forward of helm
Insulated flybridge drink box
Spreader Lights

HELM

(2) SmartCraft engine displays

Bow thruster

Single lever electronic controls

Furuno NavNet 3D GPS plotter/color fish finder/radar

Northstar 6000i GPS

Furuno RD 30 repeater

Simrad Autopilot

Standard Horizon VHF

Bennett trim tabs

Compass

Clarion bridge stereo

COCKPIT AND DECK

Cockpit spreader lights

(4) Rod Holders

Transom fish box/live well with ice dump from Eskimo ice machine

Cockpit live well

In deck fish box

Tackle center

Cockpit freezer

Cockpit bait sink with fresh water

Swim platform (Custom made 3') with swim ladder

Hot & Cold cockpit shower

Transom door

Cockpit padded coaming, padded cockpit seating on lids

Forward deck sun pads

Bow rail and pulpit with windlass

Anchor with rode and chain

Mechanical

Twin Cummins QSC-8.3 600HP common rail diesel w/ 700 Hrs

Bronze seacocks w/main engine driven crash pumps

Reverso fuel polishing system

Racor water separating fuel filters

Eskimo Ice machine

700 GPD water maker

Oil Xchanger system

Power assist hydraulic steering

3 Automatic bilge pumps

Seafire automatic fire system

PSS driplless shaft seals

PSS driplless rudder seals

Engine room blowers

Electrical

15.5 KW Kohler Generator w/ 929.8 hrs

Cruiseair reverse cycle air-conditioning

50 amp shore service w/ Glendenning Cablemaster

240V/120v/12V electrical panel with breakers

Underwater lights

Cabin reading lights

Engine starting batteries/Generator battery/House battery system

Automatic battery charger

Disclaimer

The Company offers the details of this vessel in good faith but cannot guarantee or warrant the accuracy of this information nor warrant the condition of the vessel. A buyer should instruct his agents, or his surveyors, to investigate such details as the buyer desires validated. This vessel is offered subject to prior sale, price change, or withdrawal without notice.

Mechanical Disclaimer Engine and generator hours are as of the date of the original listing and are a representation of what the listing broker is told by the owner and/or actual reading of the engine hour meters. The broker cannot guarantee the true hours. It is the responsibility of the purchaser and/or his agent to verify engine hours, warranties implied or otherwise and major overhauls as well as all other representations noted on the listing.

Исключения

При продаже яхты исключаются личные вещи владельца.

Отказ от ответственности

Компания предоставляет описание судна или яхты добросовестно, но не может гарантировать точность этой информации, а также не ручается за техническое состояние. Покупатель должен проинструктировать своих агентов или оценщиков исследовать представленную информацию более подробно, по собственному желанию. Продажа судна или яхты, изменение цены или снятие с продажи будет происходить без предварительного уведомления.

ФОТОГРАФИИ

Salon



Galley



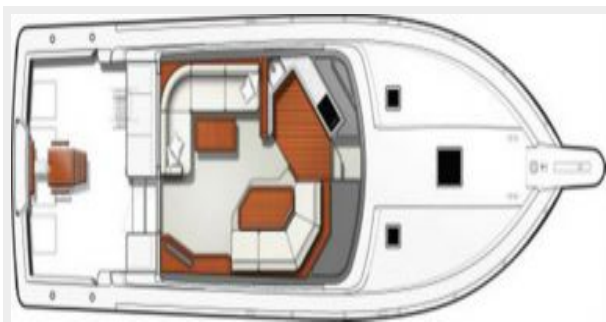
Master Stateroom



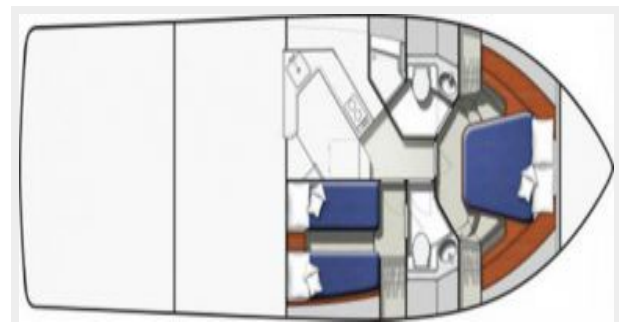
Flybridge Helm



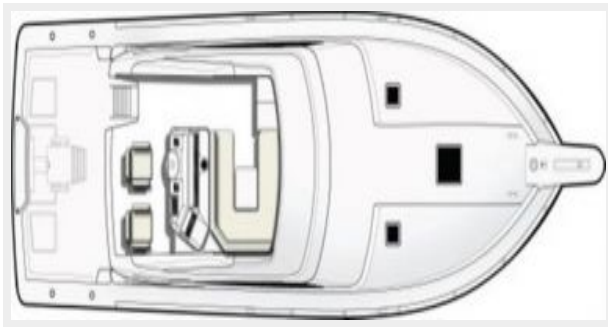
Layout



Layout



Layout



Salon



Dinette



Dinette



Galley



Galley



Galley



Galley



Washer/Dryer



Electrical Panel



Salon Stereo



Master Stateroom



Master Stateroom



Master Stateroom



Master Stateroom



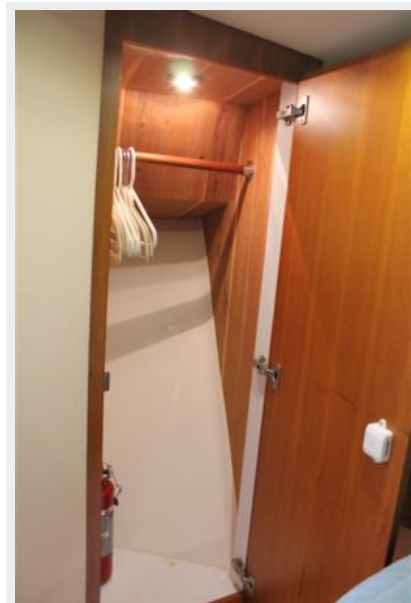
Master Stateroom



Master Stateroom



Master Stateroom



Master Head and Shower



Master Head and Shower



Master Shower



Guest Cabin



Guest Cabin



Guest Cabin



Guest Head and Shower



Guest Shower



Flybridge Helm



Flybridge



Flybridge



Hour Meters 5.7.18



Cockpit



Cockpit



Bertram



Side Deck



Foredeck



Pulpit and Ground Tackle



Port Engine



Starboard Engine



Engine Room



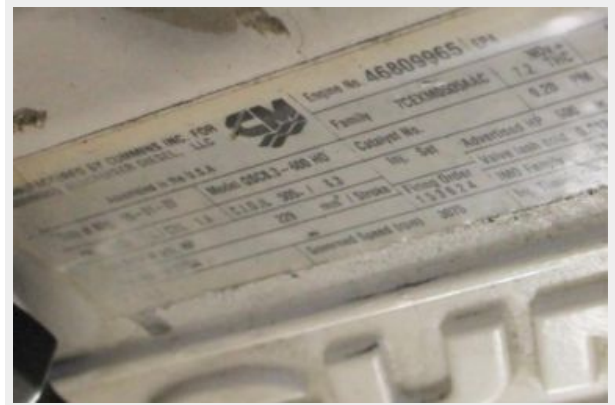
Spare Props



Engine Room



Port Eng Serial #



Stbd Eng Serial #



45



46



47



48



49



50



51



52



53



54



55



56



57



58



59



60



61



62



63



КОНТАКТЫ

Андрей Шестаков (Andrey Shestakov) – ведущий яхтенный брокер отдела продаж яхт и судов компании Shestakov Yacht Sales Inc. Официальный представитель Shestakov Yacht Sales Inc. для русскоговорящих клиентов в центральном офисе компании в Майами/Форт Лодердейл/Флорида/США.

Контактная информация

Email: andrey@shestakovyachtsales.com

Web: shestakovyachtsales.com

Телефоны

Краснодарский край: **+7(918)465-66-44**

США, Майами, Флорида: **+1(954)274-4435**

Время работы

Понедельник – Суббота: **9:00 - 21:00**
EDT

Воскресенье: **Закрито**

Адрес



Harbour Towne Marina, 850 NE 3rd St,
STE 213, Dania, FL 33004