

GAVONE — VIKING



Судостроитель: VIKING

Год постройки: 2001

Модель: Катер для спортивной рыбалки

Цена: ЦЕНА ЯХТЫ ПО ЗАПРОСУ

Местонахождение: United States

Длина общая: 65' 0" (19.81m)

Ширина: 18' 9" (5.72m)

Мин. осадка: 5' 6" (1.68m)

Купить **GAVONE — VIKING** а также выбрать подходящую вам яхту из нашего каталога яхт вам поможет опытный яхтенный брокер Андрей Шестаков. На сегодняшний день компания **Shestakov Yacht Sales Inc.** имеет большое количество яхт в собственном списке продаж, а также тесно сотрудничает со всеми крупными яхтенными производителями по всему миру.

Для того чтобы купить яхту **GAVONE — VIKING** а также проконсультироваться по любому вопросу связанному с покупкой, продажей, чартером яхт позвоните по телефону **+7(918)465-66-44**.

ОГЛАВЛЕНИЕ

ОГЛАВЛЕНИЕ	2
ХАРАКТЕРИСТИКИ	6
Обзор	6
Основная информация	6
Размеры	6
Скорость, вместимость и масса	6
Размещение	7
Корпус и палуба	7
Информация о двигателе	7
ПОДРОБНОЕ ОПИСАНИЕ	8
Accommodations	8
Master Stateroom	8
Master Head	8
VIP Stateroom	9
VIP Head	9
Guest Stateroom	9
Crew Quarters	9
Crew Head	10
Salon	10
Galley / Dinette	10
Electronics and Navigation	11
Flybridge	11
Deck	12
Engine and Mechanical Equipment	12
Electrical System / Equipment	12
Cockpit / Fishing Equipment	12
Additional Features / Equipment	13
Exclusions	13

Salesman's Comments	13
Исключения	13
Отказ от ответственности	13
ФОТОГРАФИИ	15
Profile 3	15
Profile 2	15
Profile 4	15
Profile 5	15
Profile 6	16
Profile 7	16
Master Stateroom 1	16
Master Stateroom 2	16
Master Head	17
Master Stateroom 3	17
VIP Stateroom 2	17
VIP Stateroom 1	17
VIP Stateroom 3	18
VIP Head 1	18
VIP Head 2	18
Guest Stateroom 1	18
Guest Stateroom 2	19
Crew Quarters 1	19
Crew Quarters 2	19
Crew Head	19
Salon 1	20
Salon 2	20
Salon 3	20
Salon 4	20
Salon 5	20

Salon 6	20
Galley 1	21
Galley 2	21
Galley 3	21
Galley 4	21
Galley 5	22
Dinette 1	22
Dinette 2	22
Electronics & Navigation 1	22
Electronics & Navigation 2	22
Electronics & Navigation 3	22
Electronics & Navigation 4	23
Electronics & Navigation 5	23
Electronics & Navigation 6	23
Electronics & Navigation 7	23
Electronics & Navigation 8	23
Electronics & Navigation 9	23
Flybridge 1	24
Flybridge 2	24
Flybridge 3	24
Flybridge 4	24
Flybridge 6	24
Flybridge 5	24
Flybridge 7	25
Flybridge 8	25
Deck 1	25
Deck 2	25
Engine & Mechanical Equipment 1	25
Engine & Mechanical Equipment 2	25

Engine & Mechanical Equipment 4	26
Engine & Mechanical Equipment 3	26
Engine & Mechanical Equipment 5	26
Engine & Mechanical Equipment 6	26
Engine & Mechanical Equipment 7	26
Engine & Mechanical Equipment 8	26
Engine & Mechanical Equipment 9	27
Electrical System / Equipment - GenSet	27
Cockpit / Fishing Equipment 1	27
Cockpit / Fishing Equipment 2	27
Cockpit / Fishing Equipment 3	28
Cockpit / Fishing Equipment 4	28
Cockpit / Fishing Equipment 6	28
Cockpit / Fishing Equipment 5	28
Cockpit / Fishing Equipment 8	28
Cockpit / Fishing Equipment 7	28
Profile 8	29
Profile 9	29
Profile 11	29
Profile 10	29
КОНТАКТЫ	30
Контактная информация	30
Телефоны	30
Время работы	30
Адрес	30

ХАРАКТЕРИСТИКИ

Обзор

This 65' Viking is a graceful Sport Fishing yacht that delivers best in class mix of styling, luxury and performance. Lavish Four-Stateroom, Three-Head interior with beautifully appointed Salon, huge Galley and hand finished joinery. "Gavone" has been repainted both Hull and topsides. The engines have been serviced with new injector pumps and rebuilt injectors. The heads have been resurfaced and new valves done January 2016. Lumitech under water lights were installed January 2016. The interior wall coverings, carpeting, washer / dryer, headliners, three air condition units were also redone winter 2016. New LED lights on the Bridge and Cockpit were installed in 2016 as well as the water maker was rebuilt in 2016. New computers have also been added. New enclosure 2018. CALL TODAY!!!

Основная информация

Тип судна: Катер для спортивной рыбалки

Модельный год: 2001

Год постройки: 2001

Страна: United States

Верх: Hardtop W/Tower

Открытая палуба мостика: Да

Кубрик: Да

Размеры

Длина общая: 65' 0" (19.81m)

Ширина: 18' 9" (5.72m)

Мин. осадка: 5' 6" (1.68m)

Скорость, вместимость и масса

Водоизмещение: 96000 Pounds

Вместимость воды: 360 Gallons

Объем топливного бака: 2050 Gallons

Размещение

Всего кают: 3

Всего коек: 8

Спальные места: 8

Всего ком. состава: 3

Корпус и палуба

Материал корпуса: Fiberglass

Материал палубы: Fiberglass

Комплектация корпуса: Modified V-Hull

Информация о двигателе

Двигатели: 2

Производитель: MTU

Модель: 16V2000

Тип двигателя: Inboard

Тип топлива: Diesel

ПОДРОБНОЕ ОПИСАНИЕ

Accommodations

As you enter the Salon through a starboard side air door, you step into a layout that has put all other manufacturers second to the 65' Viking layout! The Salon is incredibly spacious and extremely appointed. To port is a huge L-shaped leather sofa. Moving forward to port is the Galley with four under counter drawer refrigerators / freezers and all the appliances you'll need. Across to starboard is the settee with seating and a teak table as well as a new flat-screen TV with storage behind. Halfway down the steps to the Companionway to port is a massive rod storage area. Once in the Companionway to starboard is the clothes washer / dryer. Down a few stairs portside is the Crew Stateroom with over / under bunks, a Head with shower and an access door to the Engine Room. Moving forward in the Companionway to starboard is a Day Head adjoining a Bunkroom with over / under bunks. Across the Companionway is the Master Stateroom with a queen-size berth with storage under, an en-suite Head with shower, a large flat-screen TV, hanging lockers and oversized drawers. All the way forward is the VIP Stateroom with a double bed along with two upper bunks and an en-suite Head with shower. With a total of Four Staterooms and Three Heads and a truly spectacular interior decor, separates this 65' Viking separates itself from all the rest!

Master Stateroom

Located amidship to port is the Master Stateroom. The queen berth has assisted hinged storage beneath and night stands. An abundance of drawers and storage along with his and her cedar lined closets. There is also a flat-screen TV and VCR for your viewing pleasure. Master En-suite Head.

- VCR
- Storage
- Drawers
- Night stands
- Flat-screen TV
- En-suite Head with shower
- (2) Cedar-lined hanging lockers
- Queen berth w/ assisted hinged storage beneath

Master Head

- Sink
- Shower
- Fresh water head

VIP Stateroom

Forward Centerline is an offset double bunk with two single upper bunks with storage below. The Stateroom has an abundance of storage and drawers with a very decorative comforter, pillows and shams. A private Head with a stall shower completes the package.

- Storage
- Drawers
- En-suite Head w/ shower
- Decorative comforter, pillows & shams
- Offset double berth w/ two single upper berths & storage below

VIP Head

- Sink
- Shower
- Fresh water head

Guest Stateroom

Starboard side midship are over / under bunks that will sleep two adults very comfortably. The bottom bunk is very spacious. There is also a cedar lined hanging locker and lots of storage under. Aft is a door to the shared Day Head with head and shower.

- Storage
- Over / under berths
- Cedar-lined hanging locker
- Shared door to the Day Head

Crew Quarters

Aft to port and down three steps is the Crew Stateroom. Very large upper and lower berths are provided with a huge quantity of drawers and storage. There is a large cedar-lined hanging locker. The Crew Quarters also has their own Head with full shower. It also has an Engine Room door for quick access to the Engine Room.

- Storage
- Drawers
- Head w/ full shower
- Large Upper & lower berths
- Access door to Engine Room
- Large cedar-lined hanging locker

Crew Head

- Sink
- Shower
- Fresh water head

Salon

The Salon features a comfortable L-shaped sofa and generous amounts of storage. The sofa faces a custom pop-up TV flanked by an entertainment system with a Direct TV System. Surround sound and speakers are throughout the Salon. On the other side of the Salon is another flat-screen TV with custom storage behind it for a private storage area and several storage drawers to either side. There is a Simrad display to monitor the Bridge electronics.

- Storage
- L-shaped sofa
- Air door to Salon
- Direct TV System
- Custom pop-up TV
- Entertainment center
- Surround sounder & speakers throughout Salon
- Other side of Salon another flat-screen TV w/ custom storage behind it & Simrad display to monitor Bridge electronics

Galley / Dinette

The Galley is forward to port featuring four under-counter refrigerators and freezers and topped by custom counter tops. A stainless steel sink, dish washer, five-burner cook-top / oven and a microwave oven / convection oven are some of the features that make this Galley fully complemented. The settee is to starboard that will seat family or crew comfortably around a teak table. The settee is ultra leather with storage below. Amtico flooring extends to starboard under the settee. The storage in the Galley is abundant featuring an incredibly deep pull-out drawer and spacious cabinets and drawers. Just forward of the Galley is a large pantry / storage area large enough to store all your amenities.

- Dishwasher
- Amtico flooring
- Stainless steel sink
- Fresh water system
- Under counter freezers
- Under counter refrigerators
- Custom granite counter tops
- Five-burner cook-top w/ oven

- Lots of storage cabinets & drawers
- Microwave oven / Convection oven
- Large Pantry / Storage compartment (forward of Galley)
- Dinette w/ teak table & leather lounge style seating w/ storage below

Electronics and Navigation

- KVH Direct TV
- Simrad OP40 Control
- Simrad Sirius Weather
- ACR Remote spot light
- Raymarine Night vision
- Simrad AP24 Auto pilot
- Simrad B265LH Transducer
- (2) Simrad RD35 VHF Radios
- Fusion MS-UD750 Stereo system
- Simrad HALO 6' 25watt Open array radar
- Simrad IS40 Speed / Depth / Temp Display
- 16" NSS 12 Multi-function displays w/ CHIRP Sounder
- (4) Forward Bridge, Cockpit & Engine Room cameras w/ recorder
- (4) Simrad displays for Radar / Plotter / Sounder / GPS & Weather - (2) on the Bridge, (1) in the Cockpit, (1) in the Salon

Flybridge

Open Flybridge with new 3-Sided Strataglass enclosure, pin back center panel, center U-Zip and top vent for as much air as you need. There are two huge freezers, drink cooler and sink. The Flybridge is huge providing plenty of seating with quick dry foam cushions. The Helm chairs are custom teak with a custom Helm pod with electronic single lever controls. There are six aft Bridge rail rod holders that keep fishing easy for the Captain. All the electronics are flush mounted on custom teak panels for a new style rich look. The Full Tower has a center ladder for easy access, upper controls, steering, cushion set, sunshade and a fiberglass storage console. There are also upper flood lights and white and red recessed overhead lights in a Pipe Welders molded hardtop in Bridge Helm area.

- Sink
- Drink cooler
- (2) Huge freezers
- LED Colored lights
- Custom Teak Helm chairs
- (6) Aft Bridge rail rod holders
- Large Bridge w/ plenty of seating
- Seating w/ quick-dry foam cushions

- Helm pod w/ electronic single lever controls
- Tuna Tower w/ center ladder, Tower controls & Sunshade
- New Three-sided Strataglass enclosure w/ pin back center panel, center U-Zip & top vent

Deck

- Bow pulpit
- Windlass
- Bow pulpit
- Salt water wash down system

Engine and Mechanical Equipment

- Trim tabs
- Water maker

Electrical System / Equipment

- Battery charger
- 20kW Generator
- 24kW Generator
- 50amp Shore power

Cockpit / Fishing Equipment

- Live well
- Bait freezer
- Transom box
- Transom door
- Cockpit cover
- Seat cushions
- Cutting board
- Large fish box
- Tackle drawers
- Step box cooler
- Bait prep station
- Cockpit speakers
- Large step box storage
- Fiberglass gunnels w/ (8) Rod holders
- Lower controls on a custom pull-out drawer w/ a Simrad display w/ forward bow camera &

Fusion stereo controls

- Bluewater Fighting chair w/ rocket launcher, offset goose neck pedestal, tackle drawer, rigging station & (4) side rod cups

Additional Features / Equipment

- Water maker
- Hull painted 2013 / 2014
- (3) Air conditioning units
- Rebuilt Cockpit ice maker
- 5-Blade Teinbridge propellers
- Superstructure painted January 2016
- Both generators (20kW & 24kW) 2000 hr. service done
- 2000 hour Engine service complete - New tops ends, injectors, pumps, valves & hoses along with new turbos

Exclusions

- Owner's personal gear and items

Salesman's Comments

This 65' Viking is a graceful Sport Fishing yacht that delivers best in class mix of styling, luxury and performance. Lavish Four-Stateroom, Three-Head interior with beautifully appointed Salon, huge Galley and hand finished joinery. "Gavone" has been repainted both Hull and topsides. The engines have been serviced with new injector pumps and rebuilt injectors. The heads have been resurfaced and new valves done January 2016. Lumitech under water lights were installed January 2016. The interior wall coverings, carpeting, washer / dryer, headliners, three air condition units were also redone winter 2016. New LED lights on the Bridge and Cockpit were installed in 2016 as well as the water maker was rebuilt in 2016. New computers have also been added. New enclosure 2018. CALL TODAY!!!

Исключения

При продаже яхты исключаются личные вещи владельца.

Отказ от ответственности

Компания предоставляет описание судна или яхты добросовестно, но не может

гарантировать точность этой информации, а также не ручается за техническое состояние. Покупатель должен проинструктировать своих агентов или оценщиков исследовать представленную информацию более подробно, по собственному желанию. Продажа судна или яхты, изменение цены или снятие с продажи будет происходить без предварительного уведомления.

ФОТОГРАФИИ

Profile 2



Profile 3



Profile 4



Profile 5



Profile 6



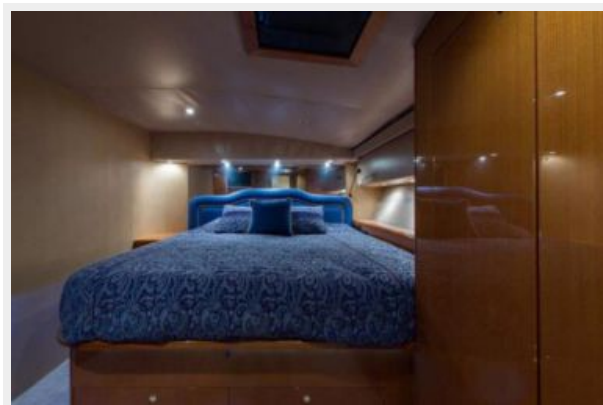
Profile 7



Master Stateroom 1



Master Stateroom 2



Master Stateroom 3



Master Head



VIP Stateroom 1



VIP Stateroom 2



VIP Stateroom 3



VIP Head 1



VIP Head 2



Guest Stateroom 1



Guest Stateroom 2



Crew Quarters 1



Crew Quarters 2



Crew Head



Salon 1



Salon 2



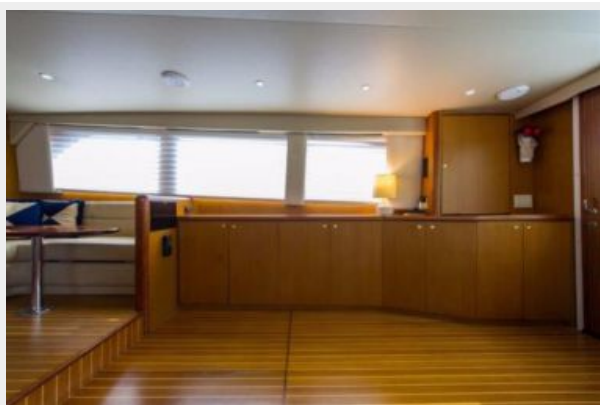
Salon 3



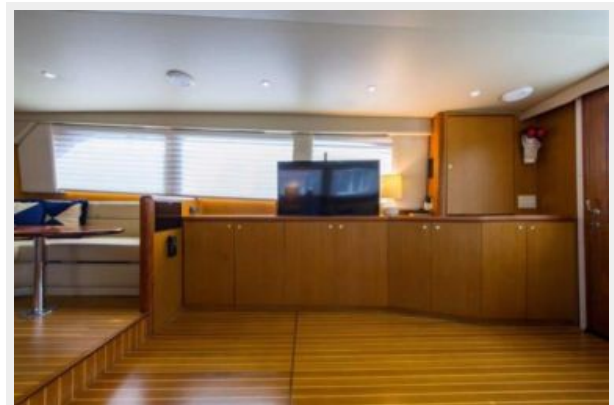
Salon 4



Salon 5



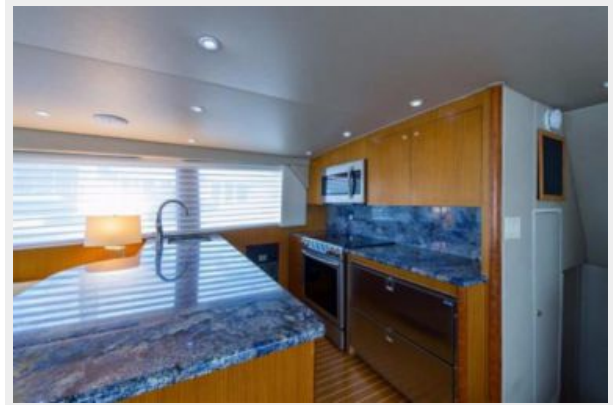
Salon 6



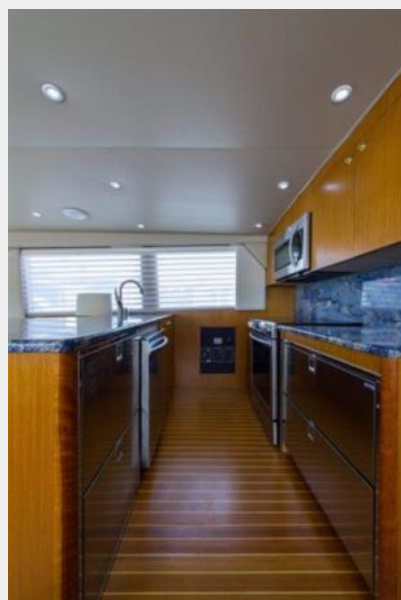
Galley 1



Galley 2



Galley 3



Galley 4



Galley 5



Dinette 1



Dinette 2



Electronics & Navigation 1



Electronics & Navigation 2



Electronics & Navigation 3



Electronics & Navigation 4



Electronics & Navigation 5



Electronics & Navigation 6



Electronics & Navigation 7



Electronics & Navigation 8



Electronics & Navigation 9



Flybridge 1



Flybridge 2



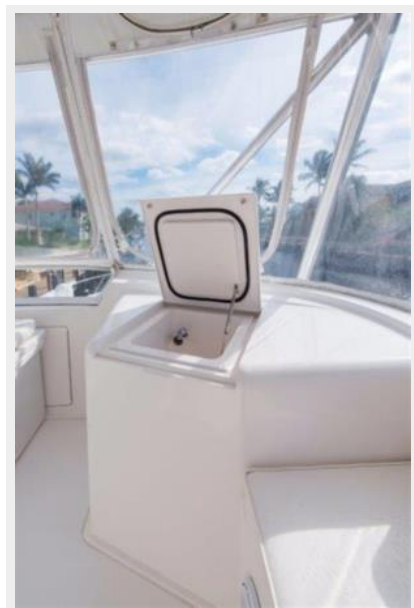
Flybridge 3



Flybridge 4



Flybridge 6



Flybridge 5



Flybridge 7



Flybridge 8



Deck 1



Deck 2



Engine & Mechanical Equipment 1



Engine & Mechanical Equipment 2



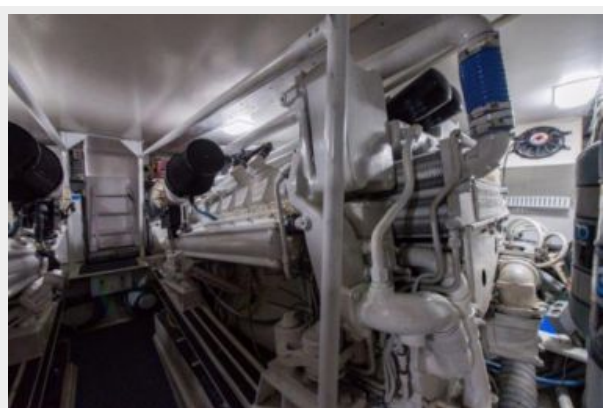
Engine & Mechanical Equipment 3



Engine & Mechanical Equipment 4



Engine & Mechanical Equipment 5



Engine & Mechanical Equipment 6



Engine & Mechanical Equipment 7



Engine & Mechanical Equipment 8



Engine & Mechanical Equipment 9



Electrical System / Equipment - GenSet



Cockpit / Fishing Equipment 1



Cockpit / Fishing Equipment 2



Cockpit / Fishing Equipment 3



Cockpit / Fishing Equipment 4



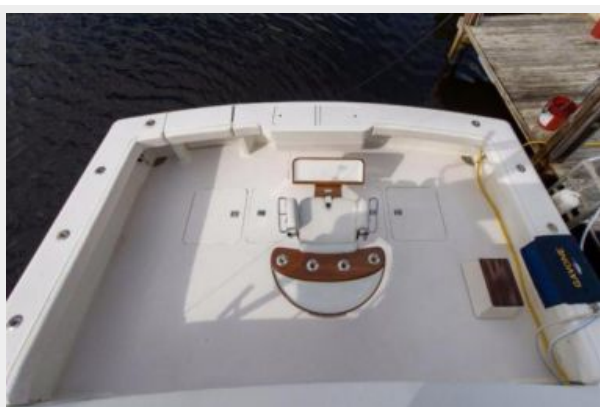
Cockpit / Fishing Equipment 6



Cockpit / Fishing Equipment 5



Cockpit / Fishing Equipment 7



Cockpit / Fishing Equipment 8



Profile 8



Profile 9



Profile 11



Profile 10



КОНТАКТЫ

Андрей Шестаков (Andrey Shestakov) – ведущий яхтенный брокер отдела продаж яхт и судов компании Shestakov Yacht Sales Inc. Официальный представитель Shestakov Yacht Sales Inc. для русскоговорящих клиентов в центральном офисе компании в Майами/Форт Лодердейл/Флорида/США.

Контактная информация

Email: andrey@shestakovyachtsales.com

Web: shestakovyachtsales.com

Телефоны

Краснодарский край: **+7(918)465-66-44**

США, Майами, Флорида: **+1(954)274-4435**

Время работы

Понедельник – Суббота: **9:00 - 21:00**
EDT

Воскресенье: **Закрито**

Адрес



Harbour Towne Marina, 850 NE 3rd St,
STE 213, Dania, FL 33004