

SPIRIT OF OLE HENRY II — MORGAN



Builder: MORGAN

Year Built: 1971

Model: Cruising Sailboat

Price: PRICE ON APPLICATION

Location: United States

LOA: 40' 0" (12.19m)

Beam: 11' 6" (3.51m)

Min Draft: 4' 6" (1.37m)

Our experienced yacht broker, Andrey Shestakov, will help you choose and buy a yacht that best suits your needs Spirit of Ole Henry II — MORGAN from our catalogue. Presently, at Shestakov Yacht Sales Inc., we have a wide variety of yachts available on our sale's list. We also work in close contact with all the big yacht manufacturers from all over the world.

If you would like to buy a yacht Spirit of Ole Henry II — MORGAN or would like help answering any questions concerning purchasing, selling or chartering a yacht, please call +1(954)274-4435

TABLE OF CONTENTS

TABLE OF CONTENTS	2
SPECIFICATIONS	3
Overview	3
Basic Information	3
Dimensions	4
Speed, Capacities and Weight	4
Accommodations	4
Hull and Deck Information	4
PHOTOS	5
CONTACTS	11
Contact details	11
Telephones	11
Office hours	11
Address	11

SPECIFICATIONS

Overview

With only 10 Pilothouse models made, Spirit of Ol' Henry II is a rare find. It's tried and true, in immaculate condition cosmetically and mechanically, and ready to take you on your next adventure. Easy to maneuver and sail for a one person adventure and the perfect Loop vessel for the trip of a lifetime. Extremely well maintained with lots of updates and new components. Owner spent the last year learning the boat as he changed, cleaned, or repaired everything. Dishes left on board it's turnkey ready

- New Bottom Paint in 2017
- New Bilge Pumps
- New Engine Hoses
- Boiled out Heat Exchangers
- New Thermostat
- New Impeller
- Oil and Filters Changed
- New Coolant
- New Alternator + Back-Up
- New Starter + Back-Up
- 5 New Batteries
- Rewired old Terminals
- New Inverter
- New Fridge + Extra Warranty
- New Shower Sump Pump
- New Garmin & Transducer
- New Zincs
- New Paint on Running Gear
- Sails & Rigging in Excellent Shape

Basic Information

Category: Cruising Sailboat

Model Year: 1971

Year Built: 1971

Country: United States

Dimensions

LOA: 40' 0" (12.19m)

Beam: 11' 6" (3.51m)

Min Draft: 4' 6" (1.37m)

Clearance: 48' 0" (14.63m)

Speed, Capacities and Weight

Water Capacity: 120 Gallons

Fuel Capacity: 70 Gallons

Accommodations

Total Cabins: 3

Total Berths: 1

Sleeps: 3

Total Heads: 1

Hull and Deck Information

Hull Material: Fiberglass

Hull Configuration: Monohull

Hull Color: White

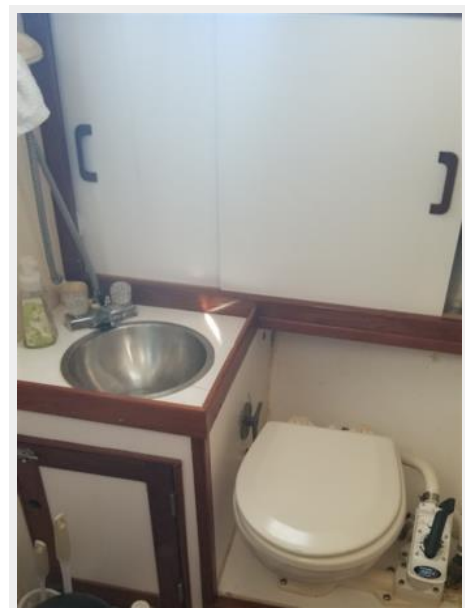
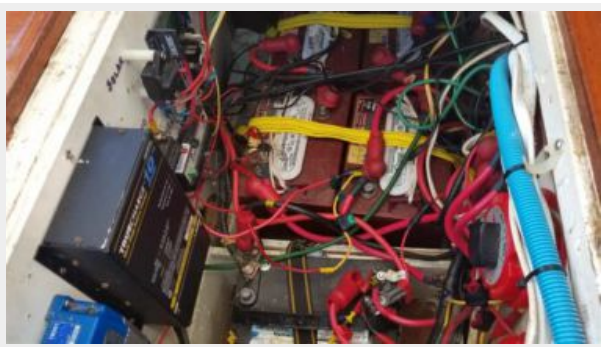
PHOTOS

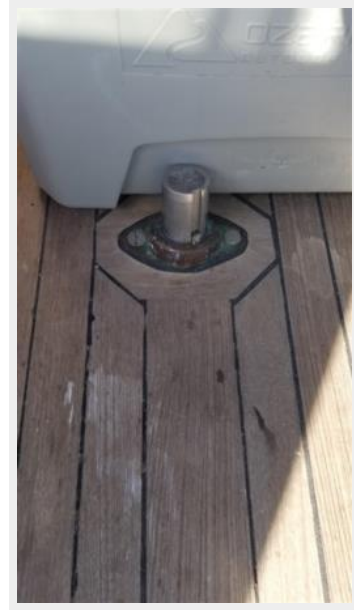












CONTACTS

Andrey Shestakov, leading yacht broker of the sales department of Shestakov Yacht Sales Inc. Shestakov Yacht Sales Inc., the official representative of the Miami/Fort Lauderdale FL headquarters.

Contact details

Email: andrey@shestakovyachtsales.com

Web: shestakovyachtsales.com/en/

Telephones

USA: +1(954)274-4435

Office hours

Monday – Saturday: **9:00 - 21:00** EDT

Sunday: **closed**

Address



Harbour Towne Marina, 850 NE 3rd St,
STE 213, Dania, FL 33004