

ALEA — BENETEAU



Builder: BENETEAU

LOA: 60' 0" (18.29m)

Year Built: 2012

Beam: 16' 0" (4.88m)

Model: Center Cockpit

Price: PRICE ON APPLICATION

Location: United States

Our experienced yacht broker, Andrey Shestakov, will help you choose and buy a yacht that best suits your needs **ALEA — BENETEAU** from our catalogue. Presently, at Shestakov Yacht Sales Inc., we have a wide variety of yachts available on our sale's list. We also work in close contact with all the big yacht manufacturers from all over the world.

If you would like to buy a yacht **ALEA — BENETEAU** or would like help answering any questions concerning purchasing, selling or chartering a yacht, please call **+1(954)274-4435**

TABLE OF CONTENTS

TABLE OF CONTENTS	2
SPECIFICATIONS	3
Overview	3
Basic Information	3
Dimensions	3
Speed, Capacities and Weight	3
Accommodations	4
Hull and Deck Information	4
Engine Information	4
DETAILED INFORMATION	5
Description	5
Exclusions	10
Disclaimer	10
PHOTOS	11
CONTACTS	17
Contact details	17
Telephones	17
Office hours	17
Address	17

SPECIFICATIONS

Overview

This powerful Beneteau Oceanis 58 passagemaker sets a new high standard for production sailing yachts. Her brilliant details have been well executed and provide the ultimate ease of sailing experience. No other vessel in her class combines this level of styling luxury, functional design, ease of handling and performance at such an unequaled value.

ALEA, delivered 2012, features many upgrades. She has a large cockpit with arch housing unique dinghy davits, Volkswagen 140 hp diesel engine with low hours, bow thruster, generator, air conditioning and water maker. She has a classic three-spreader rig with electric winches, all functions lead to the cockpit for ease of short-handed sailing. Accommodations include three double cabins, all ensuite and a crew cabin forward for two people, a large salon with seating around a table to starboard, and galley to port. Very well-equipped and set p for long distance cruising.

It is rare to find a used Oceanis 58 in the USA, let alone one in such excellent condition; and one that has been professionally maintained since new.

Basic Information

Category: Center Cockpit

Model Year: 2012

Year Built: 2012

Country: United States

Dimensions

LOA: 60' 0" (18.29m)

Beam: 16' 0" (4.88m)

Clearance: 90' 0" (27.43m)

Speed, Capacities and Weight

Water Capacity: 249 Gallons

Fuel Capacity: 280 Gallons

Accommodations

Total Cabins: 3

Sleeps: 6

Hull and Deck Information

Hull Material: Fiberglass

Engine Information

Engines: 1

Manufacturer: Volkswagen

Model: 140-5 103 KW

Engine Type: Inboard

Fuel Type: Diesel

DETAILED INFORMATION

Description

Design and Construction

- Design made following European Directive requirements and according to CE certification
- Monolithic hull design in polyester
- Monolithic structural counter molding laminated and bonded to the hull
- Deck in balsa and glass fibre sandwich covered in Diamond Point type non-slip surface
- Deck hull join bordered and screwed, with solid wood toerail
- Cast iron keel fixed with bolts and stainless steel backing plates
- Rudder hung with glass compound stock
- White colored hull

Accommodations Interior

- Woodwork Alpi Mahogany
- Parquet type laminate floors
- Fabric upholstery
- Ceiling panels, bulkhead, hull liner covered with PVC fabric

Companionway

- Headroom: 2.08m
- Wooden companionway with hung steps in moulded wood with non-slip surface
- Stainless steel stairway ramps - leather covered
- PMMA canopy - Wrinkled blinds Version 1 forward cabin

Forward Cabin

- Headroom: 2.10m
- Central double bed (2.05 x 1.22 x 1.66m) - Slatted bed base - Marine mattress
- Night tables - Cubby hole lockers - Drawers - glove boxes - Lockers under the bed (Opened by gas cylinder)
- Wardrobe - Cupboard - Shoe cabinet
- 1 Dressing table with mirror - 1 removable seat
- Mirror Gateway
- 2 Hull portholes with blackout curtains
- 3 Opening hatches with blackout blind / Mosquito net

Starboard Forward Head Compartment

- Headroom: 2.00 m
- Private washroom accessible from forward cabin
- Separate shower: Shower tray complete - shower mixer tap hot/cold water - Shower screen

PMMA

- Electric marine toilet
- Washbasin - Synthetic resin worktop - Mixing tap hot water/cold water
- 2 Mirrors
- Toilet accessories: Glass holder - Soap tray - Towel rail - Peg - Bin - Paper dispenser
- Cupboards - Cubby hole lockers
- 1 Opening hatch with blackout blind/Mosquito net

Aft Port Guest Cabin

- Double berth
- Ensuite head with electric quiet flush toilet
- Stall shower
- Vanity @PAGEBREAK@

Aft Starboard Guest Cabin

- Convertible berth from twin beds to double berth
- Ensuite head with electric quiet flush toilet
- Stall shower
- Vanity

Crew Cabin Forepeak

- Over/under berths
- Toilet
- Vanity

Salon

- Headroom: 2.03 m
- U-shaped saloon bench
- Retractable central seat
- Swivel foldaway saloon wood table - Lacquered table top and inlay and integrated bar
- Sofa with armrest
- Cupboards - Cubby hole lockers and storage along the hull, storage space under seats and sofa
- Electric bar behind port settee, with push-button control
- 1 Panoramic glazing with blackout blinds/Mosquito net
- 2 Hull portholes with blackout curtains
- 2 fixed deckhouse side windows with pleated blinds
- 4 Opening portholes in fixed side windows

Galley

- Headroom: 2.05 m
- U-shaped kitchen

- Synthetic resin worktop
- Rectangular stainless steel sink - Rectangular stainless steel drainer - Cutting board in solid wood
- 1 Shower-hose mixer-tap cold/hot
- 1 Gas cooker 3 hobs, Stainless steel grill and oven swivels - Stainless steel protection handrail
- 1 x 130 liter refrigerator, 24 V Refrigeration unit, 2 speed compressor, front opening
- 1 x 100 liter ice box, 24 V Refrigeration unit, freezer, top opening
- Drawers with slides and buffers, cupboards, equipped lockers (shelves with guy wash boards, tea towel holder, bottle holder)
- Embedded bin
- 1 Opening porthole with blackout curtain
- Washer/Dryer
- Watermakers Watermaker
- Icemaker

Cockpit

- Self-draining cockpit
- 2 Lockers under helm seat - Opened by gas cylinder
- 24V electric, for dinghy
- 2 Rope lockers - Step plate in front of steering station
- Natural solid wood slatted cockpit benches
- 2 Steering wheel consoles: Steering wheel stainless steel - 1100 mm diameter - leather covered - Brake bar - Steering Gear on partition - metal cable transmission system - navigation instrument stand (optional instruments) - Steering compass on binacle - Stainless steel glass holder - Stainless steel handrail
- Deck hole for access to tiller system - 1 Emergency tiller
- Engine throttle and control panel to starboard
- Solid wood cockpit table - 2 flaps - guy wash boards - glove boxes - bottle holder - 12V socket
- 2 water-proof loudspeakers below arch
- Lamps LED under arch
- Folding companionway door and PMMA sliding companionway hatch - Electric locking system
- Locker for 6-man Valise Life Raft

Keel Details

- Ballast: 6435 kg
- Max Draft: 8.6 ft

Mooring and Anchoring

- Self-draining chain locker

- Hatch giving access to chain locker in sail locker / Bow cabin
- Stainless steel bow fitting 2 rollers - Asymmetric spinnaker tack point
- 24V 2000 W Vertical electrical windlass - Remote control
- 8 Stainless steel mooring cleats - Stainless steel deck line protection
- Maxpower bow thruster
- Windlass control in cockpit with chain counter
- 2 Steering wheels + console
- Mooring kit (Anchor in stainless steel Delta 40 kg - 100M of 12mm diameter chain)

Electronics

Raymarine Electronics

- Adjustable and swiveling chart plotter support on cockpit table
- Cockpit: Multifunction color touchscreen E140W (GPS, Chart Plotter, Cartography Navionics Silver Europe included, Chart reader)
- Chart table: Multifunction color touchscreen E120W (GPS, Chart Plotter, Cartography Navionics Silver Europe included, Chart reader, without chart)
- Chart table: PC interface
- Covers GPS POD
- VHF
- TracVision M7 KVH

Electrical and Mechanical

- 12V circuit
- 24V circuit
- 220V circuit
- Ducts with messenger lines for threading cables of electrics or navigation electronics optional extras
- 1 x 220V Electrical panel: Breaker - Voltmeter
- 1 x 12V 24V Electrical panel: Breaker - Voltmeter - Water gauge - Fuel gauge - 24V Charging current and consumption current measurement
- Compartment to house the electrical equipment controls in the port aft cabin
- Sockets 12V
- 1 x 12V - 110 Amperes engine battery
- 1 x 12V - 110 Amperes service battery
- Battery switch (Port passageway)
- 12V Charge divider
- 1 x 12V - 25 Amperes battery charger
- 2 x 12V Sockets (1 x chart table, 1 x cockpit table)
- 24V circuit Electric windlass - Pumps - Navigation lights - Lighting - Refrigeration units
- Bow thruster
- 1 x 24V - 280 Amperes service battery set (4 x 12V - 140 Amperes batteries)

- Battery switch (Port passageway)
- 24V Charge divider
- 1 x 24V - 60 Amperes battery charger
- Sockets 220V - Water heater
- Microwave oven - Water maker - Ice maker - Air conditioning - Hood - Washing machine - Dishwasher
- Sockets 220V:
- 21 Sockets - Forward cabin (5), Fore washroom (1), Port saloon (2), Galley (2), Chart table (4), Port aft cabin (2), Port aft washroom (1), Starboard aft cabin (3), Starboard aft head compartment (1)
- Onan Generator

Propulsion

- Engine 140 hp Volkswagen
- Engine electrical control and switchboard in the starboard cockpit
- Engine compartment: Foam soundproofing - Ventilation: 1 air intake and 1 pressured air outlet
- 1 Alternator 12V: 120 Amperes
- 1 Alternator 24V: 80 Amperes
- 2 Roto moulded diesel tanks (240 liter under aft berth to port + 240 liter under aft berth to starboard) - Electronic gauge - 2 Deck fillers - Tank selection with 1/4 by-pass valves
- Filters: Sea water - Diesel
- Stainless steel shaft
- 3 retractable blades proeller
- 1 Engine access through companionway (Opening by 2 gas cylinders) - Engine access through passageway and aft cabins

Rigging and Sails

Rigging

- Standard 9/10 anodized aluminum mast - keel stepped - 3 Aft swept spreaders - Ball rails and travellers
- Anodized aluminum boom
- Discontinuous stainless steel standing rigging
- Double backstay with bottle screws
- Rigid kicking strap with tackle
- Manual Genoa furler - Drum on deck
- 2 Blocks standup on mainsheet arch
- 2 Genoa tracks with piston adjusted traveller cars - 2 Genoa sheet return blocks
- Complete running rigging: Main halyard, genoa halyard with clutch on mast and cleat, Boom topping lift with cleat on mast, Mainsheet, 2 Genoa sheets - 2 Automatic reefing line - 1 Manual

- 11 Jammers
- 6 Jamming cleats
- Pre-fitting for spinnaker (6 pad eyes and clutches)

Winches

- 2 Self-tailing genoa sheet winches (H70.2 STC)
- 2 Self tailing coachroof winces (H46.2 STC)
- 2 Winch handle boxes @PAGEBREAK@

Sails

- Dacron furling genoa
- Full batten dacron mainsail
- Gennaker (red)
- Lazy-jacks - Lazy bag
- I: 78.25 ft
- J: 22.50 ft
- P: 75.08 ft
- E: 22.50 ft

Arch

- Custom Arch with dinghy lift

Tender 10.5 AB RIB 15hp Yamaha 4S

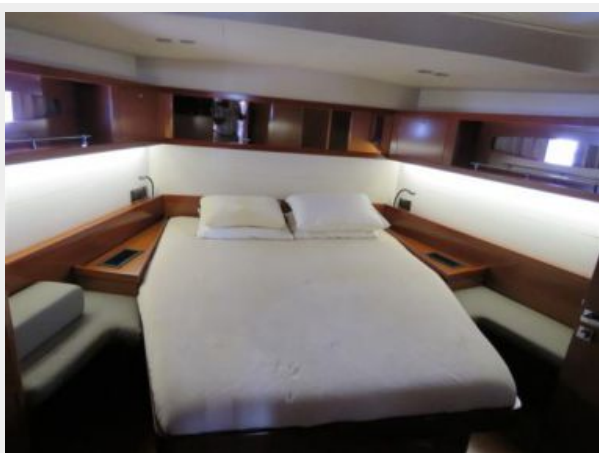
Exclusions

Owner's personal belongings.

Disclaimer

The Company offers the details of this vessel or yacht in good faith but cannot guarantee or warrant the accuracy of this information nor warrant the condition of the vessel. A buyer should instruct his representatives, agents, or his surveyors, to investigate such details as the buyer desires validated. This vessel or yacht is offered subject to prior sale, price change, or withdrawal without notice.

PHOTOS

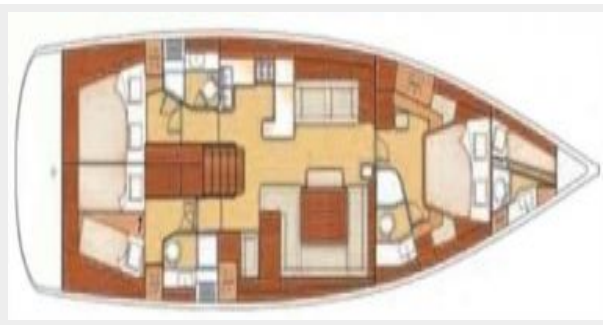
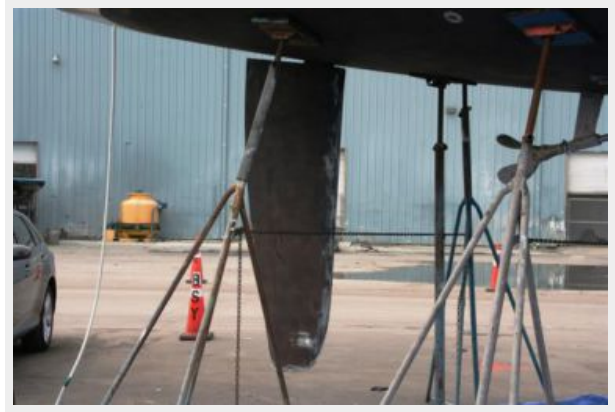












CONTACTS

Andrey Shestakov, leading yacht broker of the sales department of Shestakov Yacht Sales Inc. Shestakov Yacht Sales Inc., the official representative of the Miami/Fort Lauderdale FL headquarters.

Contact details

Email: andrey@shestakovyachtsales.com

Web: shestakovyachtsales.com/en/

Telephones

USA: +1(954)274-4435

Office hours

Monday – Saturday: **9:00 - 21:00** EDT

Sunday: **closed**

Address



Harbour Towne Marina, 850 NE 3rd St,
STE 213, Dania, FL 33004