

BANYAN — PALMER JOHNSON



Судостроитель: PALMER JOHNSON

Год постройки: 1980

Модель: Моторная яхта

Цена: **ЦЕНА ЯХТЫ ПО ЗАПРОСУ**

Местонахождение: United States

Длина общая: 102' 0" (31.09m)

Ширина: 20' 0" (6.10m)

Макс. осадка: 6' 6" (1.98m)

Крейс. скорость: 15 Kts. (17 MPH)

Макс. скорость: 20 Kts. (23 MPH)

Купить Banyan — PALMER JOHNSON а также выбрать подходящую вам яхту из нашего каталога яхт вам поможет опытный яхтенный брокер Андрей Шестаков. На сегодняшний день компания Shestakov Yacht Sales Inc. имеет большое количество яхт в собственном списке продаж, а также тесно сотрудничает со всеми крупными яхтенными производителями по всему миру.

Для того чтобы купить яхту Banyan — PALMER JOHNSON а также проконсультироваться по любому вопросу связанному с покупкой, продажей, чартером яхт позвоните по телефону **+7(918)465-66-44**.

ОГЛАВЛЕНИЕ

ОГЛАВЛЕНИЕ	2
ХАРАКТЕРИСТИКИ	5
Обзор	5
Основная информация	5
Размеры	5
Скорость, вместимость и масса	6
Размещение	6
Корпус и палуба	6
Информация о двигателе	6
ПОДРОБНОЕ ОПИСАНИЕ	7
PLEASE NOTE	7
Accommodations	7
Main Salon	7
Navigation and Electronics	7
Master Stateroom	7
Galley	8
Wheelhouse	8
Crew's Quarters	8
Engine and Mechanical Equipment	9
Electrical System	9
Deck and Hull	9
Aft Deck	9
Lazarette	9
Cockpit	10
Additional Equipment	10
Flybridge/Boat Deck	10
Tankage	10
Fire and Safety Equipment	10

Material Upgrades	10
Remarks	11
Exclusions	12
Исключения	12
Отказ от ответственности	12
ФОТОГРАФИИ	13
Aft Deck Facing Forward	13
Aft Deck - Wet Bar and Icemaker	13
Aft Deck - Facing Forward	13
Aft Deck Hi-Lo Dining Table	13
Main Salon - Looking Aft	13
Main Salon - Starboard Side	13
Main Salon - Facing Aft	14
Companionway Cabinet Divider	14
Main Salon - Dining Table - Forward	14
Main Salon Forward Cabinets	14
Galley	14
Galley Aft View	14
Wheelhouse	15
Wheelhouse Console	15
Master Stateroom	15
Master Stateroom "Her" Bathroom	15
Guest Double Berth Stateroom Starboard Side	15
Guest En-Suite Bathroom	15
Guest Twin Berth Stateroom Port Side	16
Guest En-Suite Bathroom	16
Crew and Engine Room Companionway	16
Crew Dinette	16
Captain's Cabin	16

Crew Cabin	16
Engine Room Looking Aft	17
Engine Room Looking Aft	17
Port Side Deck	17
Flybridge Helm Station	17
Flybridge Seating Area	17
Flybridge Dining Table	17
Boat Deck - Aft Seating Area	18
Foredeck	18
Bow	18
Anchor Windlass	18
Cockpit	18
Lazarette	18
Flybridge Deck	19
Accommodation Deck	19
Main Deck	19
КОНТАКТЫ	20
Контактная информация	20
Телефоны	20
Время работы	20
Адрес	20

ХАРАКТЕРИСТИКИ

Обзор

Recently contributed to AMKids and is now available for lease with interest free terms to qualified individual. If the lessee is from Florida, there will be no sales tax on any portion of the least payments including the balloon in three years. **BANYAN's** owner, an experienced yachtsman, has made many significant upgrades to this lovely classic. In 2009 a 14' extension was added to the hull which provided a cockpit, lazarette storage area, and BBQ. New main C18 CATS were installed, the electrical system was revamped, new electronics, audio visual equipment, air conditioning and heating, plumbing, steering, bow & stern thrusters, and an updated anchoring system were fitted. He has continued to maintain and upgrade **BANYAN** since then. Anyone looking for a quality, pedigree classic CMY would be fortunate to own her.

Основная информация

Тип судна: Моторная яхта

Подкатегория: Кубрик

Модельный год: 1980

Год постройки: 1980

Год обновления: 2009

Страна: United States

Верх: Hardtop

Открытая палуба мостика: Да

Кубрик: Да

Размеры

Длина общая: 102' 0" (31.09m)

Ширина: 20' 0" (6.10m)

Макс. осадка: 6' 6" (1.98m)

Скорость, вместимость и масса

Крейс. скорость: 15 Kts. (17 MPH)

Дальность на крейсерской скорости:
1100

Макс. скорость: 20 Kts. (23 MPH)

Чистый вес: 109 Pounds

Вместимость воды: 1000 Gallons

Вместимость сточного бака: 660 Gallons

Объем топливного бака: 3700 Gallons

Размещение

Всего кают: 3

Спальные места: 8

Всего ком. состава: 6

Каюта капитана: Да

Каюты экипажа: 2

Койки экипажа: 3

Корпус и палуба

Материал корпуса: Aluminum

Материал палубы: Aluminum

Комплектация корпуса: Semi-Displacement

Дизайнер корпуса: Sparkman & Stephens

Информация о двигателе

Двигатели: 2

Производитель: Caterpillar

Модель: C18 Turbo

Тип двигателя: Inboard

Тип топлива: Diesel

ПОДРОБНОЕ ОПИСАНИЕ

PLEASE NOTE

Recently contributed to AMKids and is now available for lease with interest free terms to qualified individual. If the lessee is from Florida, there will be no sales tax on any portion of the least payments including the balloon in three years.

Accommodations

A companionway leads from the port aft end of the salon to the owners' and guest accommodations below.

Main Salon

Formal dining for up to eight (8) at beautiful teak round table forward end of salon Sony 58" pop-up TV to starboard Onkyo and Sony entertainment systems can be piped throughout interior and exterior of the vessel Custom teak cabinetry with Bamboo carved motif trim Cabinets across forward end of salon for china, glassware, table linens, etc. Double door storage cabinets along port side which house the yacht's vast video collection Three-seat leather sofa to starboard Antique Oriental rugs Wooden slatted blinds 115V LED lighting, throughout (2) matching china table lamps and one additional smaller china lamp New carpeting throughout yacht in the summer of 2015

Navigation and Electronics

Furuno 3D NAVnet dual station (2) Furuno 120mile radars with AIS Class B (send and receive) dual station Furuno G-37 DGPS Furuno Sirius Marine satellite weather dual station Raymarine Tri-Data information equipment dual station (depth, speed, water temp) Standard Horizon VLH3000 loud hailer (2) ICOM ICM604 VHF with flybridge repeater Maptech offshore electronic navigator plotter dual Station Simrad SP25 auto pilot dual station (2) KVH TracVision M7 3M X 95 Projector with 13' projector screen DirecTV satellite system with each of 9 TV's having independent receivers (5) Nuvico Pan/tilt/zoom cameras (3) Seaport Technology underwater cameras Geovision GV- 1120 Multi-cam surveillance system Bose acoustic noise canceling headphones in all guest cabins Intercom/cellular phone system Cellular internet and fax Dual washers and dryers (crews quarters and lazarette)

Master Stateroom

Below and all the way aft is the light and very comfortable master stateroom with a California King berth. Plenty of hanging lockers with louvered doors for ventilation. During the 2009 refit, a

port closet was converted to a 2nd head hence providing this stateroom with his and her heads. Onyx counter tops, gold plated fixtures, Galley Maid fresh water heads and roomy showers. Ports in this stateroom are covered with sliding Shoji screens. Soft goods and linens are of the highest quality. Forward of the master to port is the twin berth guest stateroom with inboard Pullman berth, flat screen TV, and en suite head with shower. Opposite to starboard is the 2nd guest stateroom which was converted in 2009 to a double. It, too, has an inboard Pullman and en suite head. Flat screen TV on forward bulkhead.

Galley

Located on deck forward of the main salon/dining salon Very light and spacious with an abundance of storage cabinets All cabinets have security pins for underway Major appliances and features include: Bosch side-by-side refrigerator and freezer Bosch dishwasher Dumbwaiter Food warmer Profile 5-burner cooktop and oven Black & Decker Spacemaker coffee maker GE microwave Double stainless-steel sink with garbage disposal Light green granite countertops Multi-outlet strip Fold down serving table Outboard of the galley is the on-deck day head. Galley Maid fresh water head, green granite countertop, sink with gold plated fixtures. Farther along companionway is a full-length storage locker. Companionway flooring leading from salon, including the wheelhouse, is finished high gloss teak and holly sole.

Wheelhouse

Camel color leather bench seat with drawers underneath Wing doors and screen doors to port & starboard Chelsea Clock & Barometer In addition to the navigational equipment and controls, there is a 12 & 24V DC electrical panel and security panel to starboard. Steps lead from the starboard side of the wheelhouse to the flybridge. A stairway to starboard leads below to the crews' quarters and engine room.

Crew's Quarters

BANYAN'S crews' quarters are spacious and very comfortable, especially for a yacht of this size. At the bottom of the stairway, immediately to the left on the starboard side is a head and shower for the crisscross berth crew cabin opposite. To the right of the stairway starboard side is a laundry/utility area with a Bosch washer and dryer, storage cupboards and a microwave. Immediately forward of this is the captain's cabin with double berth and an ensuite head. Opposite the laundry area is a crew dinette with seating for four. Dinette settees were reupholstered in the summer of 2015. At the same time, all of the wallcoverings in the crew's quarters were renewed, all of the joinery was refinished, the carpeting was replaced with the same quality carpeting as was installed throughout the yacht (cut and bound for easy removal and access to hatches), all of the crew berth mattresses were renewed and a new Vissani refrigerator was installed.

Engine and Mechanical Equipment

New detuned CAT C18's, 875 hp, in 2009. 3,000-hour service completed in 10/14.
Hours: Starboard: 4,735 to 11/27/18. Port: 5,246 to 11/27/18. Speed and consumption: 10 knots (1100 1200 RPM) = 25 gph for both engines. 14 knots (1,850 RPM) = 50 gph for both engines. (2) Northern Lights 33 kW generators. Hours: starboard 7,360 to 11/27/18), port 7,621 to 11/27/18.
Furuno 3D NAVnet - dual station, updated 10/2014 SidePower 50 hp bow thruster SidePower 50 hp stern thruster PTO's for bow thruster, stern thruster and anchor windlass off port & starboard mains Naiad stabilizers - Fins dropped and Naiad stabilizers serviced in March 2015 (2) Seakeeper ZeroSpeed gyro stabilizers, new 2009. Strainers relocated to lazarette in 2015. Seakeepers are model #7000A. They weigh 982 pounds each and are 3'(L)x3.25'(W)x2.4'(H) Serviced in Fall 2018. Zmodo complete security system with Zviewer app for cell phone (fire, high water, security door) (2) Micron fuel scrubbers Chilled water AC, (2) compressors (2) Intake & extractor fans (2) Headhunter fresh water pumps Reverso fuel priming system New Aquamiser Watermaker, 1,500 gpd., May 2017

Electrical System

All batteries replaced 2013 - gel cells (2) For 24V system (2) For 12V system (2) 12V house batteries (3) 50amp service 220V AC inlets Shorepower 1 and 2 through Smartbox and 100amp transformer #3 Shorepower (50amp) for air conditioning 24 & 12V DC Main 24V Gens 12V Ward's Electrical panel at forward engine room bulkhead Shore cords: (2) Long 50's (2) Short 50's 100amp box with (2) 50's (1) Long 100-amp splitter

Deck and Hull

Muir 4500 windlass Forfjord 150 lb. galvanized anchor with 350' chain 10Person life raft (10) Smoke hoods Flat, stainless steel "chafe bar" removed, cleaned, replaced with new stainless-steel bar using bedding compound to prevent salt water intrusion in 2015.

Aft Deck

EZ2CY curtains on aft deck plus V-Kool on all windows Sony 32" pop-up TV 38-bottle wine chiller Icemaker Refrigerator Wet bar Access to flybridge or cockpit A/C & heat or alfresco atmosphere Electric hilo table for cocktails or dining for up to ten (10)

Lazarette

The lazarette was enlarged in 2009 after the yacht was extended by 14 feet. It houses a Bosch washer and dryer, freezer, bait freezer, steering system, two water tanks plus two Seakeeper Zero Speed Gyro stabilizers.

Cockpit

Gas BBQ Snorkel gear Fishing gear Access to aft deck or swim platform which has easy water and tender access

Additional Equipment

Vision Fitness treadmill HP printer DVD and CD library DVD and CD players throughout

Flybridge/Boat Deck

Nautica 17' Catamaran w/115 hp Yamaha outboard - TENDER PRESENTLY STORED OFF THE BOAT AND BEING CONVEYED "AS IS". Steelhead CT 2000 lb. davit Hard top with soft enclosure. New EZ2CY curtains in 10/2015. Toshiba 26" TV Vision fitness treadmill Icemaker Refrigerator Wet bar Access to wheelhouse or aft deck A/C and heat or alfresco atmosphere Hilo table for cocktails or dining for up to eight (8). One pedestal replaced with two during Spring 2015 refit. Table now slides diagonally in and out in addition to going up and down. Projector 13' movie/TV screen Boat deck repainted August 2015

Tankage

(8) Aluminum fuel tanks: All sandblasted and recoated in March 2015 with High Solid Epoxy. #1 Under master stateroom: 880 gallons #2 Between master and guest staterooms: 1148 gallons #3 Under guest stateroom: 718 gallons #4 & 5 Day tanks, port & starboard engine room: 373 gallons each. Lazarette #6,7,8: port & starboard: 230 gallons each. Center: 180 gallons Black water, Gray Water, and Water tanks: Black water in between main engines: 700 gallons sandblasted and recoated in March 2015 Gray water forward of black. Capacity unknown sandblasted and recoated in March 2015 (2) Water tanks under crews' quarters: 500 gallons each New March 2015 Tank tender in crew mess for fresh water and black water

Fire and Safety Equipment

Medical emergency kit with an automatic defibrillator Kidde FM200 Halon engine room extinguishing system (12) Dry chemical fire extinguishers

Material Upgrades

Material Upgrades made by AMIkids Jan., - Mid March 2019: 1. Seakeeper Gyro stabilizers: Replaced hydraulic actuator and hoses on starboard side. 2. Repaired crack on foredeck, painted foredeck and side decks, painted boat deck. 3. Cleaned, scraped, and painted bilges in engine room and lazarette. 4. Removed after coolers on main engines. Replaced starboard with

new, service and repaired port. 5. Removed both heat exchangers. Flushed and serviced. 6. 1,000 CAT service done on both engines. 7. Sections of engine room bilge replated, port and starboard forward. 8. Installed (2) New water heaters in lazarette. 9. Props removed and balanced. 10. Bottom painted when replating was done. 11. Many other small items repaired as per survey recommendations

Remarks

BANYAN's owner, an experienced yachtsman, has made many significant upgrades to this lovely classic. In 2009 a 14' extension was added to the hull which provided a cockpit, lazarette storage area, and BBQ. New main C18 CATS were installed, the electrical system was revamped, new electronics, audio visual equipment, air conditioning and heating, plumbing, steering, bow & stern thrusters, and an updated anchoring system were fitted. In the winter of 2015, **BANYAN** underwent a subsequent refit to the one she had had in 2009. This included, in part, some of the following major work: 1) Starboard engine overhauled: rebuilt head, new pistons and liners, rebuilt turbos and rods, heat exchanger cleaned, water pump and filters renewed. Zero hours as of 03/15/15. 2) Bottom plating replaced from bottom of keel to 20" up and from the bow to 40' aft, including the water tanks. 3) All thruhull valves serviced and checked. Those with stainless steel flanges retrofitted with delron isolator kits. 12 thruhulls without flanges were replaced with polypropylene Banjo valves. 4) All fuel tanks cleaned, and pressure tested. Grey and black water tanks, pressure tested, sandblasted, and recoated. New water tanks pressure tested and recoated. 5) Naiad stabilizer fins dropped, and major service work performed in April 2015. 6) Seakeeper gyro pumps and strainers serviced and relocated. New control boxes in lazarette. 7) Shaft logs reconditioned (coated plus new bearings and seals). Engines realigned. 8) Major tune up on both generators: New injectors, hoses, belts, clamps, oil filters, and valves set Summer 2015. Details of refit including photos and video available to be seen upon inspection of vessel. Fall 2016: (2) New Marine Exhaust System exhaust risers in October 2016. (6) New cutlass bearings. Winter 2016: Port engine majored by Ingalls Marine Diesel in December 2016. Stabilizer cooling system, water lines, filters and oil changed in December 2016. Work and Upgrades 2017/2018 Work Since May 2017 • Davit- new power pack installed, ram cylinder rebuilt, New hand control, serviced • Zero Speed Gyros- new gen 2 control board installed on port gyro, both gyros serviced and zincs replaced • Navigation Computer- installed new nav computer and TZ software • Nav Monitor- new navigation monitor installed on flybridge • Anemometer- anemometer added and integrated into navigation computer • Wi-Fi- New Aegean Wi-Fi manager installed • Spotlight- added control at wheelhouse station • Compressor- ships compressor rebuilt, new hi pressure lines run in engine room • Watermaker- new watermaker installed, currently less than 10 hours on it • Macerator- black water macerator replaced with new Oberdorfer pump • Steering- new high pressure steering lines installed under cockpit • Steering Pumps- serviced and calibrated • Steering- replaced seals on wheelhouse hydraulic steering box • Windlass- removed, cleaned, greased and replaced • Paint- exterior paint bubble removal and touch-ups • Teak- handrail and cap rail from midships around stern stripped and 8 coats applied • Generator- starting batteries replaced • Aft Bar refrigerator- replaced with new • Crew Dryer- replaced with new • Captain Cabin- new TV • Flybridge aft seating area umbrella replaced with

new teak umbrella • Master Cabin- new carpet installed February 2018 Haul Out Work • Bottom Paint- bottom cleaned, rough sanded, then two coats of Seahawk Premium bottom paint applied • Props- re-machined and balanced • Props and Shafts- applied prop speed anti-foul • Shaft Spurs- removed, cleaned, sharpened and replaced • Cutlass Bearings- inspected and determined sound • Zincs- all underside zincs replaced • Through Hulls- All grates removed, cleaned painted and replaced. • Through Hull Valves- all exercised and greased • Grey and Black Water System- most hose and pipe runs were replaced with larger diameter hose or pipe, all sump pumps checked and either most upgraded to a larger pump. • Bilge Pumps- inspected and some replaced if deemed too small or not working properly • Underwater Lights- bulbs replaced • Potable Water Pressure Tank- replaced • Anchor Chain- inspected, repainted

The owner of **BANYAN** has taken every measure possible to assure that his yacht is in excellent mechanical and structural shape, as well as in beautiful cosmetic condition. Anyone looking for a pedigree, quality, classic yacht with up to date systems and a multitude of upgrades should seriously consider this superb offering. Now on the market in Fort Lauderdale and very earnestly for sale.

Exclusions

Potential purchasers should assume that items on the vessel at the time of viewing, but not specifically listed on this sheet, are not included with the sale of the yacht. These specifications are believed to be true and correct but cannot be guaranteed. Excludes personal items including some art work, china, glass vases, etc.

Исключения

При продаже яхты исключаются личные вещи владельца.

Отказ от ответственности

Компания предоставляет описание судна или яхты добросовестно, но не может гарантировать точность этой информации, а также не ручается за техническое состояние. Покупатель должен проинструктировать своих агентов или оценщиков исследовать представленную информацию более подробно, по собственному желанию. Продажа судна или яхты, изменение цены или снятие с продажи будет происходить без предварительного уведомления.

ФОТОГРАФИИ

Aft Deck Facing Forward



Aft Deck - Wet Bar and Icemaker



Aft Deck - Facing Forward



Aft Deck Hi-Lo Dining Table



Main Salon - Looking Aft



Main Salon - Starboard Side



Main Salon - Facing Aft



Companionway Cabinet Divider



Main Salon - Dining Table - Forward



Main Salon Forward Cabinets



Galley



Galley Aft View



Wheelhouse



Wheelhouse Console



Master Stateroom



Master Stateroom "Her" Bathroom



Guest Double Berth Stateroom Starboard Side



Guest En-Suite Bathroom



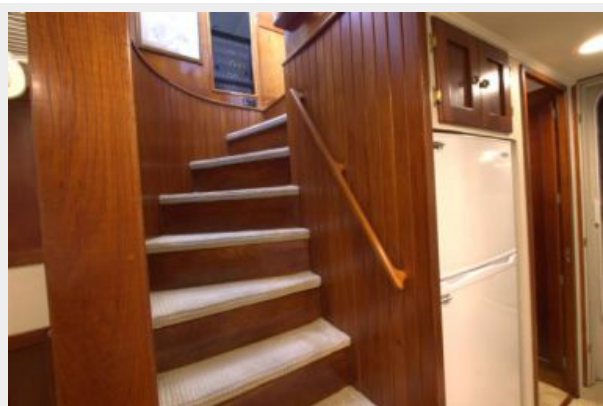
Guest Twin Berth Stateroom Port Side



Guest En-Suite Bathroom



Crew and Engine Room Companionway



Crew Dinette



Captain's Cabin



Crew Cabin



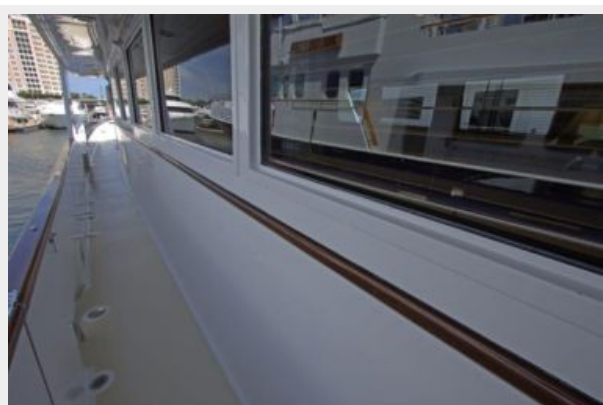
Engine Room Looking Aft



Engine Room Looking Aft



Port Side Deck



Flybridge Helm Station



Flybridge Seating Area



Flybridge Dining Table



Boat Deck - Aft Seating Area



Foredeck



Bow



Anchor Windlass



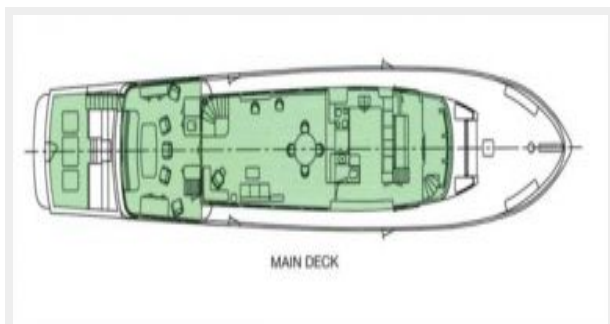
Cockpit



Lazarette



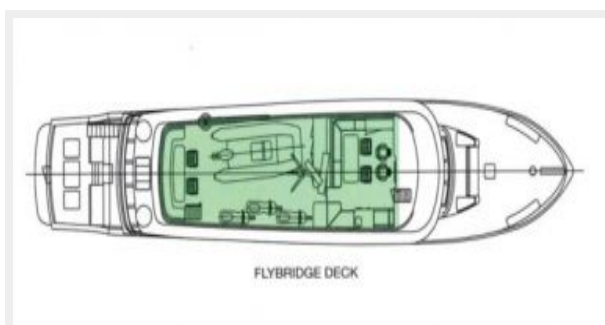
Flybridge Deck



Accommodation Deck



Main Deck



КОНТАКТЫ

Андрей Шестаков (Andrey Shestakov) – ведущий яхтенный брокер отдела продаж яхт и судов компании Shestakov Yacht Sales Inc. Официальный представитель Shestakov Yacht Sales Inc. для русскоговорящих клиентов в центральном офисе компании в Майами/Форт Лодердейл/Флорида/США.

Контактная информация

Email: andrey@shestakovyachtsales.com

Web: shestakovyachtsales.com

Телефоны

Краснодарский край: **+7(918)465-66-44**

США, Майами, Флорида: **+1(954)274-4435**

Время работы

Понедельник – Суббота: **9:00 - 21:00**
EDT

Воскресенье: **Закрито**

Адрес



Harbour Towne Marina, 850 NE 3rd St,
STE 213, Dania, FL 33004