

COM MONDAY — CHB



Builder: CHB

Year Built: 1989

Model: Cruising Yacht

Price: PRICE ON APPLICATION

Location: United States

LOA: 48' 0" (14.63m)

Beam: 15' 4" (4.67m)

Max Draft: 4' 6" (1.37m)

Our experienced yacht broker, Andrey Shestakov, will help you choose and buy a yacht that best suits your needs **Com Monday — CHB** from our catalogue. Presently, at Shestakov Yacht Sales Inc., we have a wide variety of yachts available on our sale's list. We also work in close contact with all the big yacht manufacturers from all over the world.

If you would like to buy a yacht **Com Monday — CHB** or would like help answering any questions concerning purchasing, selling or chartering a yacht, please call **+1(954)274-4435**

TABLE OF CONTENTS

TABLE OF CONTENTS	2
SPECIFICATIONS	3
Overview	3
Basic Information	3
Dimensions	3
Speed, Capacities and Weight	3
Accommodations	4
Hull and Deck Information	4
Engine Information	4
PHOTOS	5
CONTACTS	9
Contact details	9
Telephones	9
Office hours	9
Address	9

SPECIFICATIONS

Overview

With three (3) Cabins and additional sleeping for two (2) within, plus three (3) Heads, this vessel has plenty of liveable space. Her huge Salon offers plenty of Natural lighting with the wrap-around Windows and contains a lower helm. The Galley is down to Port with a nice sized Dinette to Starboard. The Forward Guest Cabin is fitted with a private Head-Shower combination.

Aft of the Salon, you will find the Day Head, Washer and Dryer, a second Guest Quarters and the Master Suite with a private Head and Shower. Throughout the entire vessel, you will also find plenty of Storage space as well!

Powered with Twin Caterpillar Diesel 3208TA motors that deliver large on Performance and Economy, she will cruise at a relaxing 10-12 knots delivering a fuel burn rate of about 8.0 to 9.0 gallons an hour! With a Fuel capacity of 500 gallons, you will have a cruising range of just over 500 miles! She will top out at about 2,400 RPMs while reaching a 'Top Speed' of about 16 to 18 knots

The 'Chung Hwa 48 Sea Master' model has a very stable (wide) Platform, and with her deep Keel design she holds true to her course with predictable handling!

Basic Information

Category: Cruising Yacht

Model Year: 1989

Year Built: 1989

Country: United States

Dimensions

LOA: 48' 0" (14.63m)

LWL: 45' 5" (13.84m)

Beam: 15' 4" (4.67m)

Max Draft: 4' 6" (1.37m)

Speed, Capacities and Weight

Displacement: 39000 Pounds

Water Capacity: 200 Gallons

Holding Tank: 50 Gallons

Fuel Capacity: 500 Gallons

Accommodations

Total Cabins: 3

Total Heads: 3

Hull and Deck Information

Hull Material: Fiberglass

Engine Information

Engines: 2

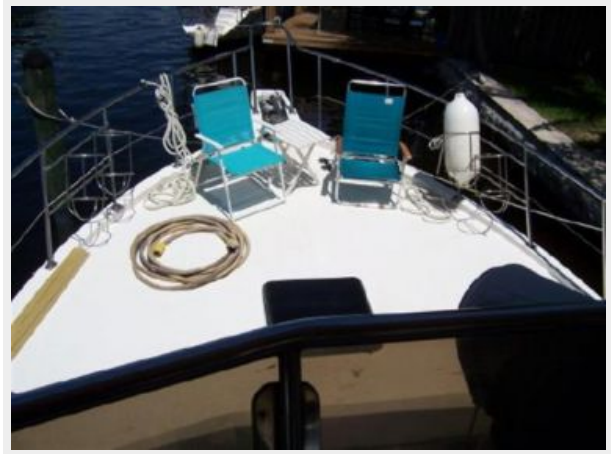
Manufacturer: Caterpillar

Model: 3208 TA

Engine Type: Inboard

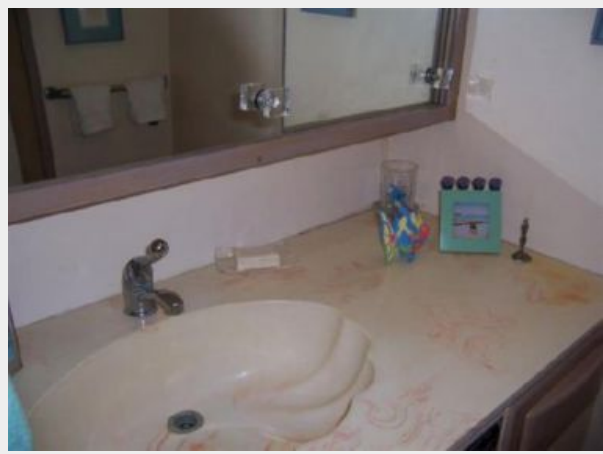
Fuel Type: Diesel

PHOTOS









CONTACTS

Andrey Shestakov, leading yacht broker of the sales department of Shestakov Yacht Sales Inc. Shestakov Yacht Sales Inc., the official representative of the Miami/Fort Lauderdale FL headquarters.

Contact details

Email: andrey@shestakovyachtsales.com

Web: shestakovyachtsales.com/en/

Telephones

USA: +1(954)274-4435

Office hours

Monday – Saturday: **9:00 - 21:00** EDT

Sunday: **closed**

Address



Harbour Towne Marina, 850 NE 3rd St,
STE 213, Dania, FL 33004