

## DUCHESS — HATTERAS



**Судостроитель:** HATTERAS

**Год постройки:** 1996

**Модель:** Моторная яхта

**Цена:** **ЦЕНА ЯХТЫ ПО ЗАПРОСУ**

**Местонахождение:** United States

**Длина общая:** 74' 4" (22.66m)

**Ширина:** 18' 2" (5.54m)

**Мин. осадка:** 5' 5" (1.65m)

**Макс. осадка:** 5' 7" (1.70m)

**Крейс. скорость:** 20 Kts. (23 MPH)

**Макс. скорость:** 24 Kts. (28 MPH)

Купить **DUCHESS — HATTERAS** а также выбрать подходящую вам яхту из нашего каталога яхт вам поможет опытный яхтенный брокер Андрей Шестаков. На сегодняшний день компания **Shestakov Yacht Sales Inc.** имеет большое количество яхт в собственном списке продаж, а также тесно сотрудничает со всеми крупными яхтенными производителями по всему миру.

Для того чтобы купить яхту **DUCHESS — HATTERAS** а также проконсультироваться по любому вопросу связанному с покупкой, продажей, чартером яхт позвоните по телефону **+7(918)465-66-44**.

# ОГЛАВЛЕНИЕ

---

ОГЛАВЛЕНИЕ	2
ХАРАКТЕРИСТИКИ	7
Основная информация	7
Размеры	7
Скорость, вместимость и масса	7
Размещение	7
Корпус и палуба	8
Информация о двигателе	8
ПОДРОБНОЕ ОПИСАНИЕ	9
NOTE	9
Walkthrough	9
Wheelhouse	9
Galley	10
Dinette	10
Salon	10
Aft Deck	11
Accommodations Steps	11
Master Cabin	11
Master Head	12
Aft Guest Cabin	12
Forward Accommodations Companionway	12
Amidship VIP Cabin	12
Amidship VIP Head	13
Forward Guest Cabin	13
Forward Guest Cabin Head	13
VIP Cabin	14
VIP Head	14
Foredeck	14

Side Decks	15
Flybridge Equipment	15
Flybridge Helm	15
Boat Deck	15
Tender	16
Engine Room	16
Lazarette	16
Electrical	17
Remarks	17
Exclusions	18
Disclaimer	18
Исключения	18
Отказ от ответственности	18
<b>ФОТОГРАФИИ</b>	<b>19</b>
Pilothouse Settee	19
Pilothouse Helm	19
Pilothouse Radar	19
Helm Center	19
New Garmin MFD	19
New Garmin Radar	19
Pilothouse Flybridge Steps	20
Galley to Port	20
Galley Looking Forward	20
Galley Looking Aft	20
Galley Dinette to Starboard	20
Galley Dinette Looking Forward	20
Galley Dinette Looking Aft	21
Salon Looking Forward	21
Salon Dining	21

---

Salon Settee	21
Salon Starboard Side	21
Salon Portside	21
Salon Entertainment Cabinet	22
Salon Aft Stairs	22
Aft Deck Fridge/Freezer	22
Aft Deck Bar	22
Aft Deck Liquor Cabinet	22
Aft Deck Table	22
Aft Deck Table	23
Sport Deck Steps	23
Lazarette Entrance	23
Master Looking Aft	23
Master Looking to Port	23
Master Looking to Starboard	23
Master Walk in Locker	24
Master Head	24
Custom Master Shower	24
Shower Body Sprays	24
Aft Guest Cabin	24
Aft Laundry	24
Forward Accommodation Steps	25
Mid VIP Steps	25
Mid VIP Looking Forward	25
Mid VIP Looking to Port	25
Mid VIP Looking to Starboard	25
Mid VIP Jacuzzi Tub	25
Forward Guest Cabin	26
Forward Guest Cabin Head	26

---

---

Forward VIP Looking Forward	26
Forward VIP Looking Aft	26
Forward VIP/Day Head	26
Bow	26
New Bow Cushions	27
Bow	27
Windlass Details	27
Partial Side Deck	27
Articulating Marquipt Stairs	27
Flybridge Looking Forward	27
Flybridge Key Bar	28
Portside Flybridge Seating	28
Starboard Side Flybridge Grill Cabinet	28
Grill Cabinet	28
Starboard Side Flybridge Table	28
Walk Thru to Boat Deck	28
Helm	29
Helm	29
Portside Helm Detail	29
New Helm Chairs	29
Tender	29
Tender OB	29
Hardtop Equipment	30
Port Engine	30
Starboard Engine	30
Outboard Starboard Engine	30
Aft Gen	30
Fuel Gen	30
Updated AC System Port Gen Room	31

---

---

Starboard Side Gen Room	31
Home Dock	31
Alternate Profile	31
Dec 2019 Yard Visit	31
Dec 2019 Yard Visit	31
Layout	32
Dec 2019 Yard Visit	32
<b>КОНТАКТЫ</b>	<b>33</b>
Контактная информация	33
Телефоны	33
Время работы	33
Адрес	33

# ХАРАКТЕРИСТИКИ

## Основная информация

Тип судна: Моторная яхта	Модельный год: 1996
Год постройки: 1996	Страна: United States
Верх: Hardtop	Открытая палуба мостика: Да

## Размеры

Длина общая: 74' 4" (22.66m)	Ширина: 18' 2" (5.54m)
Мин. осадка: 5' 5" (1.65m)	Макс. осадка: 5' 7" (1.70m)

## Скорость, вместимость и масса

Крейс. скорость: 20 Kts. (23 MPH)	Крейсерская скорость поворота: 1900 Kts.
Макс. скорость: 24 Kts. (28 MPH)	Макс. скорость поворота: 2000 Kts.
Чистый вес: 77 Pounds	Вместимость воды: 345 Gallons
Вместимость сточного бака: 180 Gallons	Объем топливного бака: 1561 Gallons

## Размещение

Всего кают: 5	Спальные места: 10
Всего ком. состава: 4	

## Корпус и палуба

---

**Материал корпуса:** Fiberglass

**Материал палубы:** Fiberglass

**Комплектация корпуса:** Semi Vee

**Отделка корпуса:** Fiberglass

**Дизайнер корпуса:** Hargrave

**Дизайнер экстерьера:** Hatteras

**Дизайнер интерьера:** Hatteras

## Информация о двигателе

---

**Двигатели:** 2

**Производитель:** Detroit Diesel

**Модель:** 12V92TA

**Тип двигателя:** Inboard

**Тип топлива:** Diesel



---

# ПОДРОБНОЕ ОПИСАНИЕ

---

## NOTE

---

Dec 2019, 2017 15' AB tender w/70 HP Yamaha included!

## Walkthrough

---

DUCHESS is boarded via her articulating Marquipt boarding ladder into either the port or starboard Wheelhouse doors.

The Wheelhouse has a centerline helm followed by a U shaped settee.

Aft is the open Galley to port with a dinette to starboard. The Salon is aft with a dining table for four, entertainment center, a large L shaped seven cushion couch and a swivel chair.

Aft through a custom Lucite door is the surprisingly roomy Aft Deck that has been reconfigured to have a four seat dining table, granite topped bar and a granite top chest freezer. Steps aft lead to the swim platform and Lazarette storage area.

Steps forward to starboard in the Salon lead to the Fifth Guest Cabin with laundry aft, Engine Room entrance and the Master Suite with a king size berth and a custom built large shower in lieu of the standard tub/shower arrangement.

From the Wheelhouse curved steps below to a VIP Cabin with a Jacuzzi tub Head aft. To port is an over/under Cabin with private Head which could be a Crew Cabin.

All the way forward is the VIP queen bed Cabin with a Head that also serves as the Day Head.

Also from the Pilothouse are steps to the Flybridge with a centerline helm, key bar to port, double grill cabinet to starboard and U shaped seating with a table aft.

The seat has a custom walkthrough to access the Boat Deck. A 14' RIB and crane occupy this area.

Note, all cabins except Fifth Cabin have custom innerspring mattresses (replaced 2016).

## Wheelhouse

---

The Wheelhouse is entered from either port or starboard sliding pilothouse doors. The helm is centerline with an overhead electronic console. Visibility is excellent through the three panel windshield and side windows. The main electrical panel is to port behind double doors.

Aft is a raised U shaped seat with storage below and a Corian table centered. Nine comfortable

steps with a stainless railing to starboard lead to the Flybridge, each with a step light.

Equipment includes: Garmin 8212 12" touchscreen MFD w/plotter, radar & weather (new 2014) Garmin GHP-20 autopilot (new 2014) Garmin dual slot card radar (new 2014) Garmin AIS 300 receiver (new 2014) Garmin GXM 52 weather receiver (new 2014) Garmin GMR24 HD radar (new 2014) Furuno 72 mile radar Northstar 6000i GPS Icom ICM-602 VHF w/DSC Raymarine ST-40 digital depth (2) Fire system pull handles w/indicator lights Generator hold blower switch w/indicator lights (5) Bilge pump switches w/indicator lights (2) Engine Room blower with indicator lights Windlass switch Nav light switch Stainless steel helm wheel DDEC (sturdy) electronic engine controls, separate Port and starboard DDEC engine displays Hatteras systems monitor for water temp, oil pressure, bilge level, exhaust temp, dive temp, fire, AC power both audible and visual alarms. VDO tank level panel for (4) fuel tank and water tank Emergency engine stops Naiad stabilizer control ACR URD-100 searchlight control Ritchie 6" magnetic power damp compass in binnacle VDO rudder angle indicator (2) VDO volt meters DDEC station active, synchronizer and low idle control Emergency overside controls for DDEC in starboard locker Soderberg chart light (3) windshield wiper/washer controls CruiseAir SMX A/C control Faux wood sole Key, start/stop switches Battery parallel switch Trim tab controls

---

## Galley

---

The Galley is immediately behind the Pilothouse sharing the same vinyl planked sole. It is C shaped to port and includes the following equipment: Full size Kenmore fridge-freezer w/water/ice through door Kitchen Aid microwave above cooktop (new 2014) Full size Kenmore oven below countertop (new 2014) 4 Burner Kenmore cooktop glass top (new 2014) Stainless undermount double sink w/removable spray faucet Stainless steel full size GE dishwasher (new 2018) Granite countertops w/bull nose edge (12) Formica Cabinet doors (6) Formica drawers Large fluorescent overhead light (6) Mini spots Digital AC control Bella Cera LVP vinyl sole (new 2014) Window blinds w/Roman shades & crown molding (2) Stereo speakers

---

## Dinette

---

Dinette area to starboard includes: Granite table top (4) Person Ultra Leather settee w/(2) storage drawers below (2) Halogen mini spots Window blinds w/Roman shade & crown molding

---

## Salon

---

Open to the Galley and next aft from the Galley is the large full beam Salon. Large side windows with blinds offer plenty of light. A crown molding above with Roman shades cover the wood blinds as needed (new 2015).

The carpet in this area and throughout the boat was replaced June of 2018. Forward to port adjacent to the Galley is a round 48" glass tabletop on a tan fluted base with four full size

dining chairs. Next aft is a built in TV cabinet with 40" Sony LED TV flanked by two cabinets, one for liquor, one for wine. Next aft is a swivel barrel chair and a small end table. On the aft bulkhead is a custom hinged clear Lucite 1 1/4" thick door. An L shaped seven cushion couch aft and to starboard. Each cushion has separate hinged storage access. A wood coffee table lies in front of the sofa.

Next forward is a Lucite enclosure for the stairs to the accommodations and Engine Room. Adjacent to the top stair is the stereo gear cabinet concealing a Sony Blue Ray player, a Direct TV Sat receiver, Sony five disc CD/DVD charger, a Yamaha stereo receiver, Nilec audio speaker selector and a Harmony remote control. Also in the Salon are digital AC controls, eight overhead halogen and LED lights, two stereo speakers and a Lutron Grafik eye dimmer control.

---

## Aft Deck

---

Faux teak over fiberglass decking Varnished 48" table w/compass rose inlay (4) Varnished chairs w/removable cushions Fiberglass raised bulwarks to aft corners Stainless steel hoop rails aft Top loading Sea Frost air/water cooled holding plate fridge/freezer, new 2008, w/granite top to port L shaped bar area to starboard w/granite top, stainless steel Manitowoc, clear icemaker (new 2018), undermount stainless steel sink, (2) cabinets, drawer, hinged top liquor cabinet Life ring Aft facing window to Salon (2) Stereo speakers (3) Overhead stainless steel trimmed lights Rear facing CCTV camera (5) Curved steps to Sport Deck w/faux teak covering & step lights Integral & overhanging swim platform Freshwater wash down spigot w/Quick Release fitting (3) Cabinets w/(3) shelves each (2) Sets of stern cleats Lazarette access door (3) Stainless steel hoop rails aft

---

## Accommodations Steps

---

Aft in the Salon are the steps to the aft two Staterooms and Engine Room. There are seven steps with steps lights and a carpet runner.

At the base of the stairs the foyer is granite tile. Forward is the Engine Room. To port is an upper lower bunk Room.

Aft is the Master.

---

## Master Cabin

---

Aft is the full beam Master Cabin entered from the forward end. A king size island berth is on centerline with an upholstered headboard set upon a mirrored bulkhead. There are five drawers and rope lights below the berth. Above is an AC soffit with two down lights and two reading lights. To both port and starboard are nightstands with sconce lights set upon mirrored panels.

To both port and starboard are chests of six drawers each side, with countertops, opening

portholes, wood blinds and Roman shades behind an upholstered valance with rope lights behind.

Forward to starboard is access to the private Master Head.

Forward to port is a large walk in cedar lined hanging locker with an auto light.

Also in this cabin is a 32" LG LED TV with a Toshiba five disc DVD changer and a Direct TV receiver, eight additional halogen mini spots, two stereo speakers, digital AC controls and a newly carpeted sole (6/2018).

---

## Master Head

---

To starboard forward in the Master, is the entrance to the private Master Head. There is a vanity with four cabinet doors below a Corian countertop with twin sinks, new faucets and two large sliding medicine cabinet doors above. The toilet is a Galley maid toilet. The sole is Absolute Black granite tile sole. The standard climb over tub has been replaced (2007) by a custom walk in shower with a shelf, handheld or wall mounted fixture and three body sprays. A tempered glass sliding door and small side light were fitted during this upgrade. Also in the Head are nine halogen lights, an AC vent and an exhaust fan.

---

## Aft Guest Cabin

---

Just forward of the Master is an over/under Guest Cabin with two berths, outboard. The top bunk can be hinged downward to make into a lounge. This room also houses the Whirlpool Thin Twin washer and dryer, replaced in 2014. Also in this cabin is a four shelf cedar lined locker, two stereo speakers, digital AC controls and three halogen mini spots.

---

## Forward Accommodations Companionway

---

From the starboard side of the Engine Room, five steps downs is a landing with the Day/Forward VIP Head, generator room, VIP Forward, upper lower Guest Stateroom to port with Head and aft and down four steps to the private VIP Cabin. Two cedar lined cabinets are adjacent to the aft stairs.

---

## Amidship VIP Cabin

---

Amidships and with her private Head this cabin is full beam. Entrance is from the forward end with a queen size island berth off the forward mirrored bulkhead. An upholstered headboard sits upon the mirrored bulkhead. To both port and starboard are twin nightstands with three small drawers each.

Outboard to starboard are four storage drawers with a countertop, porthole, wood blinds, Roman shades and an upholstered valance above. On the shelf aft is an LG 24" TV with a Sony DVD player.

Aft in both sides of the cabin are cedar lined auto lit hanging lockers. A rare option is the door into the forward end of the Engine Room allowing unrestricted access.

Also in this cabin are four overhead halogen mini spots, two stereo speakers, rope lighting under the berth, three drawers under the berth, digital AC controls, new carpet and private access to the VIP Head.

---

## Amidship VIP Head

---

The VIP Head is somewhat enlarged by having the washer dryer in the Fifth Cabin. The vanity has two large storage cabinets below, a Corian countertop with a molded sink with new faucet.

Above are two large mirrored sliding medicine cabinet doors. The toilet is a Galley Maid model. The sole is Corian tile.

The tub shower has a Jacuzzi pump, a handheld or wall mounted fixture, sliding clear glass doors and an exhaust fan.

Also in this Head are five halogen mini spots, an AC vent and linen locker.

---

## Forward Guest Cabin

---

Off the Forward Accommodation Companionway is the Forward Guest Cabin with over under bunks athwartship of the aft bulkhead.

Each berth has a reading light. There are two drawers below the lower bunk. A cedar lined hanging locker is forward and outboard.

Also in this cabin is access to private Head, digital AC controls, stereo speaker and two overhead lights.

---

## Forward Guest Cabin Head

---

The private Head is forward with a pocket door. There are two cabinet doors in the vanity, with a Corian countertop and molded sink with a new faucet above. A mirrored medicine cabinet door is above.

The toilet is a Galley Maid model. The stall shower has a clear glass bi fold door, a handheld or wall mounted fixture and a light. Also in this cabin is a deck hatch, three overhead lights, an AC

vent and a Corian tile sole.

## VIP Cabin

---

All the way forward is the VIP Cabin with an island berth on centerline. There are two drawers at the foot of the berth with rope lighting at the perimeter. The entire forward bulkhead has a mylar mirror with two door access to the anchor locker. The headboard is upholstered. Above is a deck hatch with screen, two halogen lights and two reading lights in a dropdown soffit.

Port and starboard shelves serve as nightstands. Each terminates into two drawer cabinets.

Aft to port is a cedar lined hanging locker. Aft to starboard is a large storage cabinet.

Three hinged stairs lead aft and up to the upper level.

Also in this cabin are two stereo speakers, padded hull liner with frosted opening portholes, a Sharp 20" LCD TV, rope lighting at the valance, digital AC controls and brand new carpet.

## VIP Head

---

At the upper level of the VIP Cabin and accessed from the dual door is the VIP/Day Head.

There are two cabinet doors below in a vanity with a Corian top and molded sink with a new faucet. Above is mirrored medicine cabinet door.

The sole is Corian tile. The toilet is a Galley Maid model. The stall shower has a bifold clear glass door, a handheld or wall mounted shower fixture, a light and an exhaust fan.

Also in this head is an overhead deck hatch, two halogen lights and two storage cabinets behind the toilet.

## Foredeck

---

Fiberglass nonskid deck Hatteras bow pulpit w/teak inlay nonskid over for lower maintenance  
Bow pulpit burgee staff and socket Stainless steel anchor roller Welded stainless steel bow rail  
w/vinyl covered safety line Galley Maid anchor windlass (rebuilt 2008) w/capstan, wildcat & (2)  
deck mounted foot switches Chain lock 110 lb. Bruce anchor w/ 300' of chain (all new 2008)  
Spare rope deck pipe w/rope & thimble Fresh water washdown spigot w/Quick Release fitting (2)  
Stainless steel fender baskets store (3) fenders each Deck hatch into VIP cabin Bow seat with  
removable cushions, cover and storage below Sunlounge with removable cushions & cover (new  
2018), port & starboard stainless steel grab rail Port & starboard deck hatches on trunk cabin  
Hailer horn under brow ACR spotlight on brow (3) Windshield wipers/washers Windshield  
privacy cover Fiberglass spray rails added 2010 (3) Step vertical Marquipt boarding ladder Black

painted mast at Foredeck & side windows 8 Step Marquipt Tide Ride ladder w/articulating platform & dual wood handrails

## Side Decks

Fiberglass nonskid deck (3) Port, (3) Starboard spring line cleats Port & starboard dockside water inlets Port & starboard Hubbell TV/telephone inlets Port & starboard 250 volt 50 amp cablemaster cord reels Port & starboard stainless steel grab rails below Salon windows on catwalks Side deck rail openings port & starboard with safety chain Eight step Marquipt Tide Ride ladder w/articulating platform, stows starboard side (2) Port, (2) starboard deck courtesy lights Intercoastal navigation lights Electric/air trumpet horns

## Flybridge Equipment

2 Piece access door above steps to Flybridge Centerline helm Carpeted sole over nonskid fiberglass deck Freshwater wash down w/Quick Release spigot Hatteras Key Bar w/Corian top & integrated bar sink (4) Ultra Leather swivel barstools at bar w/covers U Line drink refrigerator at bar Storage cabinet at bar Stainless steel footrest at bar Grill unit w/(2) Gaggenau electric grills under hinged top w/(2) storage lockers below (2) "In wall" stereo speakers Aft U shaped seating has removable cushions, covers, storage below & a walk thru feature for ease of getting to the Boat Deck Triangular Corian table at L shaped seat to starboard Hatteras radar arch w/(2) arch lights Custom full fiberglass hardtop w/(8) LED lights 3 Side enclosure, polycarbonate, perfect condition, (3) panels snap to overhead (new 2016)

## Flybridge Helm

Garmin 8216 MFD, chart, AIS, radar, weather (new 2014)Garmin GHP 20 autopilot (new 2014)Raymarine ST40 digital depth/com IC M506, VHF w/DSC Laminated carbon fiber dash panel (new 2014)Stainless steel helm wheel DDEC (sturdy) electronic engine controls Ritchie 6" magnetic Powerdamp compass in binnacle DDEC electronic engine displays (new 2014)Battery parallel switch Port and starboard engine ignition/start switches/keys Trim tab controls Horn control VDO rudder angle indicator (2) VDO voltmeters DDEC station active, synchronizer, low idle control ACR URC-100 searchlight control (5) Bilge pump switches with indicator lights (2) Engine blower switches Nav light control Windlass control Systems monitor w/water temp, oil pressure, bilge level, exhaust temp, drive pressure, AC power loss, all visual & audible Naiad stabilizer control remote panel Large storage area under helm w/(2) 24 volt light (2) Lebroc Ultra Leather upholstered helm chairs w/footrests Plexi Venturi windscreen w/stainless steel grab rail

KVH Trac Vision 5 (new 2/20)

## Boat Deck

Fiberglass nonskid decking Walk thru access from Flybridge Stainless steel tender tie downs  
 Fitted tender chocks 110V outlet Marquipt 1000 lb. davit (recently rebuilt) Flagpole socket Revere  
 8 man cannister lift raft in chocks (new 2015)

## Tender

---

2017 15 AB VST RIB tender

Equipment includes: Full cover 70 HP Yamaha four stroke OB, 2017, 11 hours Garmin GPS Battery  
 shutoff switch Nav lights Yamaha digital tach Bilge pump Fuel gauge Garmin VHF Console steering  
 w/grab rail

Bow step cooler seat

## Engine Room

---

T/Detroit Diesel 12V92TA main engines Covington Diesel, 2009 port 1100 hrs SMOH Starboard  
 approx. 950 hrs SMOH Both heat exchangers removed & cleaned 2016 New DDEC engine EC  
 boards (2014) DDEC backup selector switches 75 lb. CO2 cylinder in Engine Room 35 lb. CO2  
 cylinder in generator room Freshwater spigot w/hose VDO engine hour meters total/time port  
 2523, total/time starboard 2616 Shaft log splash guard Dockside water pressure regulator  
 w/pressure gauge (2) DC blowers 110 Volt water pump w/Well-x-Troll accumulator tank 10 Place  
 rod holders overhead (2) AC circulation fans Oil change system for main engines & generators  
 FCI 800 GPD watermaker (2) Galley Maid head pump (2) 110 Volt air conditioning raw water  
 circulation pump (new 2017) Hynautic hydraulic steering reservoir w/pressure gauge (4)  
 Overhead DC lights in safety cage (2) Overhead fluorescent lights Dual Racor 1000 fuel filters for  
 each engine (2) Leesan fuel/lift pumps Jacuzzi pump for VIP A.O. Smith 40 gallon water heater  
 Fuel manifold w/return valves that follow Naiad 254 stabilizer system Compressed air outlet with  
 valve & pressure gauge 110 Volt stabilizer cooling pump Aluminum work bench w/vice (2) 110  
 Volt outlets (2) Engine block heaters AirSep crankcase ventilation system (2) CRS 300 coolant  
 recovery bottle ZF 2:45 to 1 transmission rated 3 1/2" Stainless steel prop shafts (2) 5 blade Nibral  
 44" main propellers Fuel in fiberglass tanks as follows: 210 Gallons in generator room 525  
 Gallons forward midship 646 Gallons aft midship 215 Gallons aft (5) Automatic/manual bilge  
 pumps with high water alarms 2 Hp 110V compressor w/expansion tank in generator room (4)  
 Head diverter valves (2) Racor fuel filters for generators (8) CruiseAir A/C compressors in  
 generator room (3) shower sumps Sat/cable TV distribution system Black Pirelli flooring (new  
 2010) Manual direct reading Engine Room gauges Manual temp gauges for generators

## Lazarette

---

(2) Overhead DC lights Hynautic hydraulic steering actuator, new Feb 2020 Autopilot feedback  
 sensor Bennett trim tab reservoir w/control unit Spare 60lb Danforth anchor Center hoop rail for



swim platform

## Electrical

---

12/24 Volt DC Electrical system  
110/220 Volt AC electrical system  
Onan 20 kw generator in sound shield, 3062 hours  
Onan 20 kw generator in sound shield (new engine 2006), 2962 hours  
Dytek 24 volt 50 amp battery charger(4)  
12 Volt 8D batteries in battery boxes in Engine Room, new Feb 2020

(1) Group 27 gel battery on Flybridge for electronics backup, new Feb 2020

Newmar 12 volt step down transformer under FB helm  
Port & starboard Hubbell 50 amp 250 volt power inlet  
Port & starboard Hubbell 50 amp 125 volt power inlet  
Port & starboard Glendinning 50 amp 250 volt shore cord reel(2)  
Powerformer 15 KVA transformers (4)  
Battery cutoff switches  
DC ship's service 1 w/(24) breaker protected circuits & analog voltmeter at Pilothouse  
Electronic service w/(12) breaker protected circuits at Pilothouse  
DC ship's services 2 with (24) breaker protected circuits in Engine Room  
AC ship's services 1 with (18) breaker protected circuits at main panel  
AC ship's services 2 with (12) breaker protected circuits at main panel  
AC ships services 3 with (11) breaker protected circuits in Engine Room  
AC switch panel w/port/starboard gen 1/gen 2 selector at Pilothouse(2)  
Analog hertz meters at switch panel(4)  
Analog amp meters at switch panel(2)  
Analog voltmeters at switch panel

## Remarks

---

DUCHESS has had the same caring owner for the last 20 years. He has made countless improvements to the Flybridge, Aft Deck, Engine Room and electronics.

She has a five stateroom arrangement paneled in satin finished maple. New carpet June 2018!  
Constant improvements by a professional crew. Owner has moved on and is ready to sell.  
Fantastic condition, excellent equipment, rebuilt main engines in a spotless Engine Room.

Dec. 2019 yard visit included:

A full bottom job

Stabilizer seals replaced

Rudder & shaft stuffing boxes repacked

Fire system recertified

Life raft recertified

---

## Exclusions

---

While every effort was made to list all pertinent included equipment aboard DUCHESS, there are some personal belongings aboard. Prospective purchasers should assume any item not specifically mentioned herein will not convey at closing.

---

## Disclaimer

---

Specifications are provided for informational purposes only. Data was obtained from sources believed reliable but is not guaranteed by owner or brokers. Buyer assumes responsibility to verify all speeds, capacities, consumption's and other measurements contained herein and otherwise provided and agrees to instruct his agents to confirm such details prior to purchase. Vessel is subject to prior sale, price and inventory changes and withdrawal from market without notice.

---

## Исключения

---

При продаже яхты исключаются личные вещи владельца.

---

## Отказ от ответственности

---

Компания предоставляет описание судна или яхты добросовестно, но не может гарантировать точность этой информации, а также не ручается за техническое состояние. Покупатель должен проинструктировать своих агентов или оценщиков исследовать представленную информацию более подробно, по собственному желанию. Продажа судна или яхты, изменение цены или снятие с продажи будет происходить без предварительного уведомления.

# ФОТОГРАФИИ

### Pilothouse Settee



### Pilothouse Helm



### Pilothouse Radar



### Helm Center



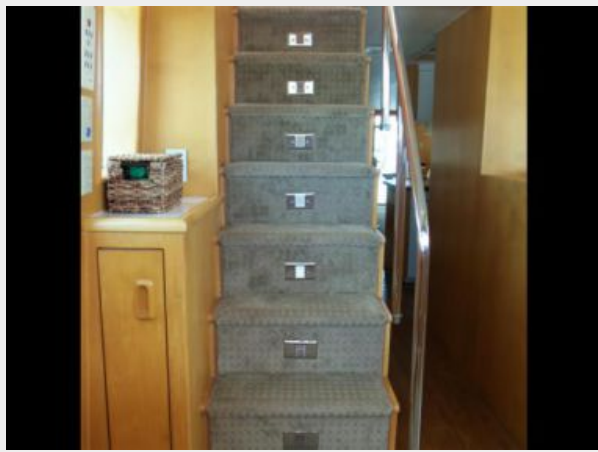
### New Garmin MFD



### New Garmin Radar



**Pilothouse Flybridge Steps**



**Galley to Port**



**Galley Looking Forward**



**Galley Looking Aft**



**Galley Dinette to Starboard**



**Galley Dinette Looking Forward**





**Galley Dinette Looking Aft**



**Salon Looking Forward**



**Salon Dining**



**Salon Settee**



**Salon Starboard Side**



**Salon Portside**



**Salon Entertainment Cabinet**



**Salon Aft Stairs**



**Aft Deck Fridge/Freezer**



**Aft Deck Bar**



**Aft Deck Liquor Cabinet**



**Aft Deck Table**

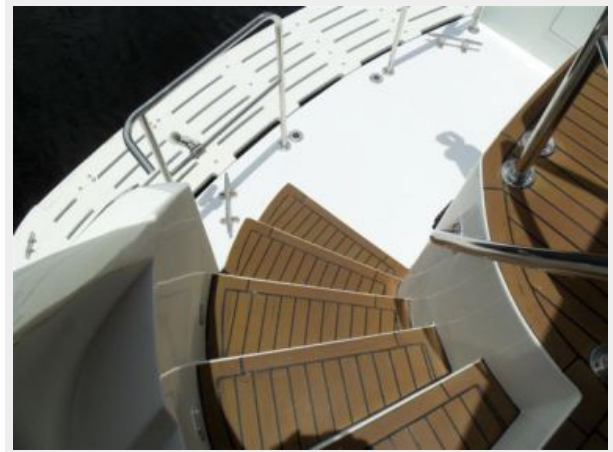




**Aft Deck Table**



**Sport Deck Steps**



**Lazarette Entrance**



**Master Looking Aft**



**Master Looking to Port**



**Master Looking to Starboard**



**Master Walk in Locker**



**Master Head**



**Custom Master Shower**



**Shower Body Sprays**



**Aft Guest Cabin**



**Aft Laundry**





**Forward Acommodation Steps**



**Mid VIP Steps**



**Mid VIP Looking Forward**



**Mid VIP Looking to Port**



**Mid VIP Looking to Starboard**



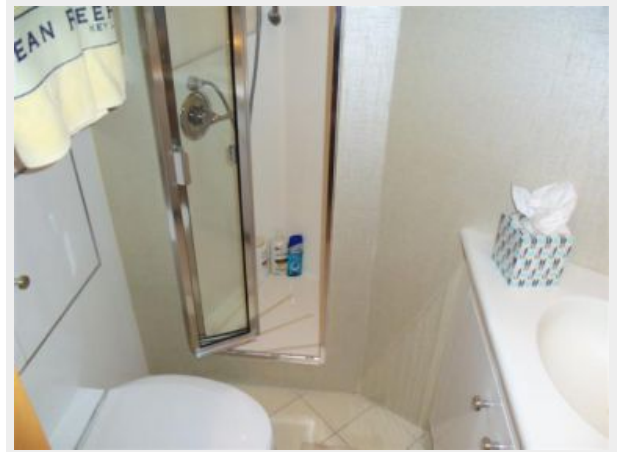
**Mid VIP Jacuzzi Tub**



**Forward Guest Cabin**



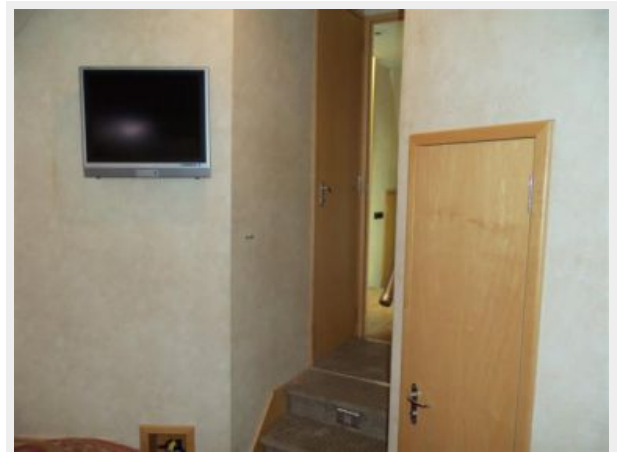
**Forward Guest Cabin Head**



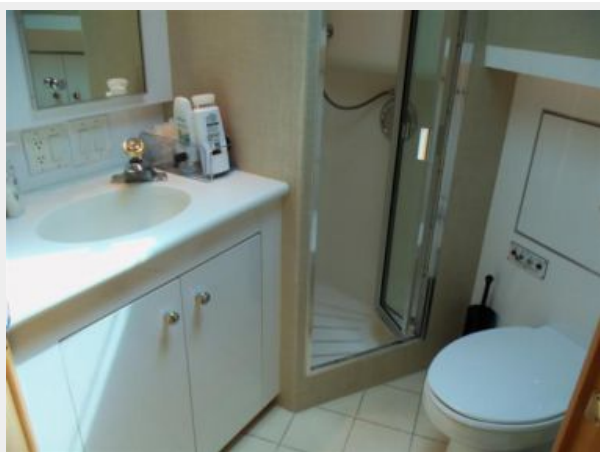
**Forward VIP Looking Forward**



**Forward VIP Looking Aft**



**Forward VIP/Day Head**



**Bow**





**New Bow Cushions**



**Bow**



**Windlass Details**



**Partial Side Deck**



**Articulating Marquipt Stairs**



**Flybridge Looking Forward**



**Flybridge Key Bar**



**Portside Flybridge Seating**



**Starboard Side Flybridge Grill Cabinet**



**Grill Cabinet**



**Starboard Side Flybridge Table**



**Walk Thru to Boat Deck**





**Helm**



**Helm**



**Portside Helm Detail**



**New Helm Chairs**



**Tender**



**Tender OB**



**Hardtop Equipment**



**Port Engine**



**Starboard Engine**



**Outboard Starboard Engine**



**Aft Gen**



**Fuel Gen**





**Updated AC System Port Gen Room**



**Starboard Side Gen Room**



**Alternate Profile**



**Home Dock**



**Dec 2019 Yard Visit**



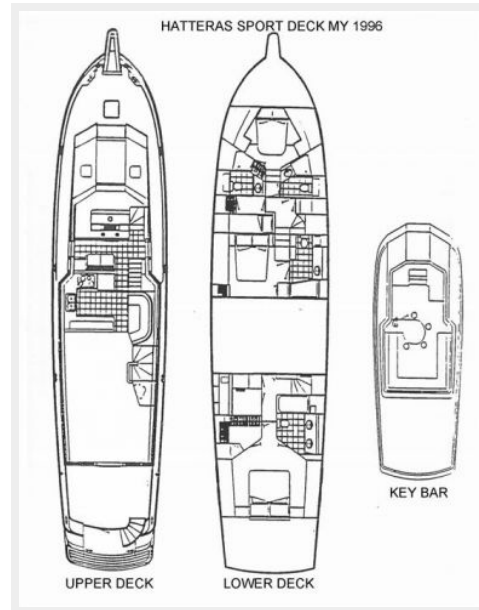
**Dec 2019 Yard Visit**



## Dec 2019 Yard Visit



## Layout





# КОНТАКТЫ

---

Андрей Шестаков (Andrey Shestakov) – ведущий яхтенный брокер отдела продаж яхт и судов компании Shestakov Yacht Sales Inc. Официальный представитель Shestakov Yacht Sales Inc. для русскоговорящих клиентов в центральном офисе компании в Майами/Форт Лодердейл/Флорида/США.

## Контактная информация

---

Email: [andrey@shestakovyachtsales.com](mailto:andrey@shestakovyachtsales.com)

Web: [shestakovyachtsales.com](http://shestakovyachtsales.com)

## Телефоны

---

Краснодарский край: **+7(918)465-66-44**

США, Майами, Флорида: **+1(954)274-4435**

## Время работы

---

Понедельник – Суббота: **9:00 - 21:00**  
EDT

Воскресенье: **Закрито**

## Адрес

---



Harbour Towne Marina, 850 NE 3rd St,  
STE 213, Dania, FL 33004