

## MARYFER — AZIMUT



**Builder:** [AZIMUT](#)

**Year Built:** 2015

**Model:** Motor Yacht

**Price:** PRICE ON APPLICATION

**Location:** United States

**LOA:** 58' 0" (17.68m)

**Beam:** 16' 0" (4.88m)

**Max Draft:** 4' 6" (1.37m)

Our experienced yacht broker, Andrey Shestakov, will help you choose and buy a yacht that best suits your needs **Maryfer — AZIMUT** from our catalogue. Presently, at Shestakov Yacht Sales Inc., we have a wide variety of yachts available on our sale's list. We also work in close contact with all the big yacht manufacturers from all over the world.

If you would like to buy a yacht **Maryfer — AZIMUT** or would like help answering any questions concerning purchasing, selling or chartering a yacht, please call **+1(954)274-4435**

# TABLE OF CONTENTS

TABLE OF CONTENTS	2
SPECIFICATIONS	6
Basic Information	6
Dimensions	6
Speed, Capacities and Weight	6
Accommodations	6
Hull and Deck Information	6
Engine Information	7
DETAILED INFORMATION	8
Interior Arrangement	8
Exterior Arrangement	8
Salon	8
Galley	8
Companionway	9
Master Cabin	9
VIP Cabin	9
Guest Stateroom Port	9
Crew Quarters	10
Helm	10
Deck Equipment	10
Mechanical Equipment	10
Remarks	11
Exclusions	11
Disclaimer	11
PHOTOS	12
Salon	12
Salon	12
Salon	12

---

Galley	12
Galley	13
Galley	13
Galley	13
Galley	13
Galley	13
Galley	13
Galley	14
Companionway	14
Companionway	14
Master Cabin	14
Master Cabin	14
Master Cabin	14
Master Cabin	15
Master Cabin	15
Master Cabin	15
Master Cabin	15
Master Cabin	15
Master Head	16
Master Head	16
Master Head	16
VIP Cabin	16
VIP Cabin	17
VIP Cabin	17
VIP Head	17
VIP Head	17
VIP Head	18
Guest Stateroom Port	18
Guest Stateroom Port	18
Guest Stateroom Port	18

---

---

Guest Head	19
Guest Head	19
Crew Quarters	19
Crew Quarters	19
Crew Quarters	19
Helm	19
Helm	20
Helm	20
Helm	20
Helm	20
Helm Stereo	20
Aft Deck	20
Aft Deck	21
Aft Deck	21
Aft Deck	21
Aft Deck	21
Aft Deck	21
Bow	21
Bow	22
Bow/Sunpad	22
Transom Shower	22
Transom	22
Swim Platform	22
Sunshade	22
Passerelle	23
Passerelle	23
Engine Room	23
Engine Room	23
Engine Room	23

---

---

Engine Room	23
Engine Room	24
Engine Room	24
Engine Room	24
Maryfer	24
Maryfer	24
Maryfer	24
Maryfer	25
Maryfer	25
Maryfer	25
Maryfer	25
CONTACTS	26
Contact details	26
Telephones	26
Office hours	26
Address	26

---

# SPECIFICATIONS

---

## Basic Information

---

**Category:** Motor Yacht

**Model Year:** 2016

**Year Built:** 2015

**Country:** United States

## Dimensions

---

**LOA:** 58' 0" (17.68m)

**Beam:** 16' 0" (4.88m)

**Max Draft:** 4' 6" (1.37m)

## Speed, Capacities and Weight

---

**Displacement:** 64000 Pounds

**Water Capacity:** 172 Gallons

**Fuel Capacity:** 793 Gallons

## Accommodations

---

**Total Cabins:** 3

**Total Heads:** 3

**Crew Cabin:** 1

## Hull and Deck Information

---

**Hull Material:** Fiberglass

---

## Engine Information

---

**Engines:** 2

**Manufacturer:** MAN

**Model:** 8V-1000

**Engine Type:** Inboard

**Fuel Type:** Diesel

---

# DETAILED INFORMATION

---

## Interior Arrangement

---

This Atlantis has a three stateroom three head layout with two island queens and a double bed in the guest stateroom. The master stateroom is full beam and spacious with a beautiful en-suite bathroom located midship. Her VIP stateroom is forward with island queen bed and full private bathroom. The guest stateroom offers a twin bed to port with full bathroom across the companion way. The galley is to starboard with full amenities and built in dishware and cupboard storage. To port across from the galley is a U-shaped lounge seating area with expanding table for dining. Decor highlights include beautiful hardwood floors and carpet with teak veneers and high gloss finishes throughout.

## Exterior Arrangement

---

The 58's aft deck area offers open and inviting spaces to lounge. A hydraulic swim platform with hot and cold shower and swim ladder allows for easy access to the yacht from the ocean. Coming up to the main deck you have both port and starboard stairs with the added feature of a passerelle for stern docking and easy access. The aft deck features a large sunbed with headrest that can fold aft to create a bench seat facing forward to the main interior deck. The hardtop has a sunroof that opens and side windows for great ventilation when the helm air conditioning is not in use. The aft facing L-shaped lounge has an over sized table for dining as well as a fully loaded outside credenza with sink, grill, refrigerator and storage. The beautiful teak decks feature the new style white trim. Her helm area has an additional lounge seat to port as well as a double seat facing forward, allowing views unobstructed through the one piece windshield. The walk around deck forward brings you to another sunbed on the bow for additional space in the sun. Crew quarters are aft with head in lieu of the garage option.

## Salon

---

- Carpet
- U-shaped lounge with expanding table
- Hillside port lights & blinds
- Overhead storage cabinets
- Entertainment center with LCD TV & DVD & Blu Ray
- LED interior lighting

## Galley

---

- Four burner glass stovetop
- Dishwasher



- Stainless sink
- Microwave
- Fitted dishware storage
- Abundant storage cabinets
- Upright refrigerator & freezer
- Hardwood flooring

---

## Companionway

---

- Third guest bathroom with vanity & separate stall shower
- Washer dryer combo unit

---

## Master Cabin

---

- Full beam layout with king bed
- Night stands
- Reading lights
- Wardrobe lockers
- Oversized hull side windows with black out blinds
- LCD TV & Blu Ray
- Carpet
- LED lighting
- Full en-suite bathroom with vanity & storage
- Separate stall shower
- Separate enclosed toilet

---

## VIP Cabin

---

- Located forward with island queen size bed
- Reading lights
- LED lighting
- Hull side windows & overhead escape hatch
- Full carpet
- Wardrobe storage
- LCD TV with Blu Ray
- Private bathroom with stall shower, full vanity & storage

---

## Guest Stateroom Port

---

- Double bed outboard

- Reading lights
- Hull side port lights
- Overhead storage cabinets
- Carpet
- Hanging locker
- LCD TV

---

## Crew Quarters

---

- Located aft with private access
- Single bed
- Vanity & sink
- Toilet/shower area

---

## Helm

---

- Raymarine Gold package with Hybrid touch screen
- Radar, GPS chartplotter, auto pilot, depth indicator, VHF
- Maneuvering Joystick control Xenta for thruster & engines
- Video cameras on aft deck & engine room
- Chain counter control at helm for anchor system
- LED lights & carbon fiber dash panel
- AC vents
- MAN engine displays with controls including synchronizer
- Fusion stereo multi zone stereo system with Blu tooth
- Underwater lights (2)
- Full aft canvas enclosure with side access

---

## Deck Equipment

---

- Teak decks
- Anchor windlass
- Sunbed on bow
- Full length rails to aft cockpit
- Hydraulic swim platform
- Passerelle for stern boarding
- Full canvas covers for cushions

---

## Mechanical Equipment

---

- 60 Hertz shore cord with power retractor
- 110V outlets
- 20 kw Kohler generator
- Chiller system
- Oil change system
- Inverter battery charging system

---

## Remarks

---

This 58 Atlantis is a well maintained vessel, offering sporty high performance with beauty and functionality. Her meticulously planned large interior and Italian design make this sport cruiser yacht a pleasure to show.

---

## Exclusions

---

Owner's personal belongings.

---

## Disclaimer

---

The Company offers the details of this vessel or yacht in good faith but cannot guarantee or warrant the accuracy of this information nor warrant the condition of the vessel. A buyer should instruct his representatives, agents, or his surveyors, to investigate such details as the buyer desires validated. This vessel or yacht is offered subject to prior sale, price change, or withdrawal without notice.

# PHOTOS

Salon



Salon



Salon



Galley



**Galley**



**Galley**



**Galley**



**Galley**



**Galley**



**Galley**



**Galley**



**Companionway**



**Companionway**



**Master Cabin**



**Master Cabin**



**Master Cabin**



**Master Cabin**



**Master Cabin**



**Master Cabin**



**Master Cabin**



**Master Head**



**Master Head**



**Master Head**



**VIP Cabin**





**VIP Cabin**



**VIP Cabin**



**VIP Head**



**VIP Head**



VIP Head



Guest Stateroom Port



Guest Stateroom Port



Guest Stateroom Port



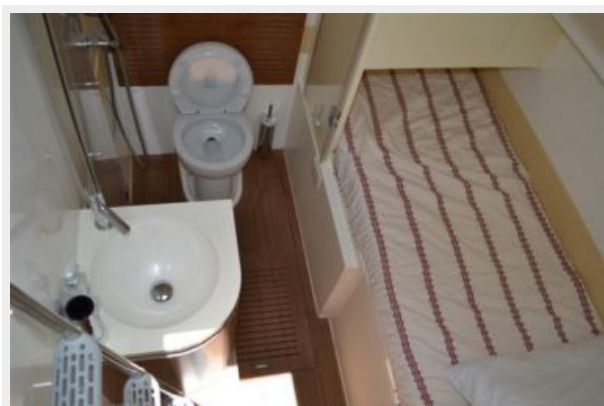
**Guest Head**



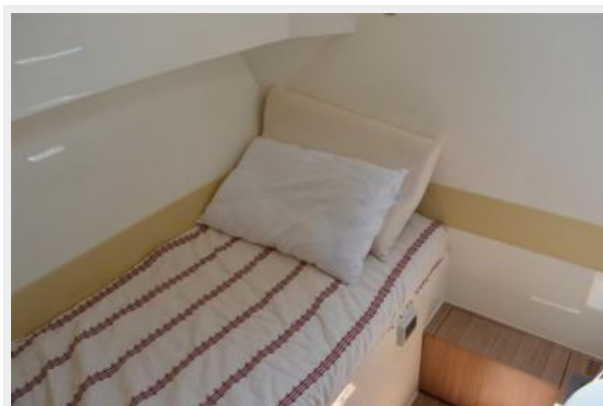
**Guest Head**



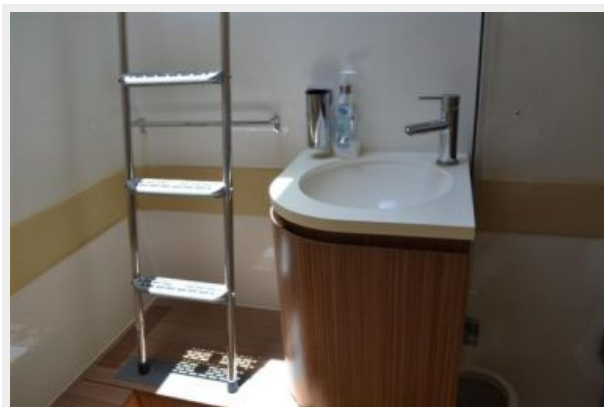
**Crew Quarters**



**Crew Quarters**



**Crew Quarters**



**Helm**



Helm



Helm



Helm



Helm



Helm Stereo



Aft Deck



**Aft Deck**



**Aft Deck**



**Aft Deck**



**Aft Deck**



**Aft Deck**



**Bow**



**Bow**



**Bow/Sunpad**



**Transom Shower**



**Transom**



**Swim Platform**



**Sunshade**



**Passerelle**



**Passerelle**



**Engine Room**



**Engine Room**



**Engine Room**



**Engine Room**



**Engine Room**



**Engine Room**



**Engine Room**



**Maryfer**



**Maryfer**



**Maryfer**





**Maryfer**



**Maryfer**



**Maryfer**



**Maryfer**



# CONTACTS

---

Andrey Shestakov, leading yacht broker of the sales department of Shestakov Yacht Sales Inc. Shestakov Yacht Sales Inc., the official representative of the Miami/Fort Lauderdale FL headquarters.

## Contact details

---

Email: [andrey@shestakovyachtsales.com](mailto:andrey@shestakovyachtsales.com)

Web: [shestakovyachtsales.com/en/](http://shestakovyachtsales.com/en/)

## Telephones

---

USA: +1(954)274-4435

## Office hours

---

Monday – Saturday: **9:00 - 21:00** EDT

Sunday: **closed**

## Address

---



Harbour Towne Marina, 850 NE 3rd St,  
STE 213, Dania, FL 33004