

MARYFER — AZIMUT



Судостроитель: [AZIMUT](#)

Год постройки: 2015

Модель: Моторная яхта

Цена: ЦЕНА ЯХТЫ ПО ЗАПРОСУ

Местонахождение: United States

Длина общая: 58' 0" (17.68m)

Ширина: 16' 0" (4.88m)

Макс. осадка: 4' 6" (1.37m)

Купить **Maryfer — AZIMUT** а также выбрать подходящую вам яхту из нашего каталога яхт вам поможет опытный яхтенный брокер Андрей Шестаков. На сегодняшний день компания **Shestakov Yacht Sales Inc.** имеет большое количество яхт в собственном списке продаж, а также тесно сотрудничает со всеми крупными яхтенными производителями по всему миру.

Для того чтобы купить яхту **Maryfer — AZIMUT** а также проконсультироваться по любому вопросу связанному с покупкой, продажей, чартером яхт позвоните по телефону **+7(918)465-66-44**.

ОГЛАВЛЕНИЕ

ОГЛАВЛЕНИЕ	2
ХАРАКТЕРИСТИКИ	6
Основная информация	6
Размеры	6
Скорость, вместимость и масса	6
Размещение	6
Корпус и палуба	6
Информация о двигателе	7
ПОДРОБНОЕ ОПИСАНИЕ	8
Interior Arrangement	8
Exterior Arrangement	8
Salon	8
Galley	8
Companionway	9
Master Cabin	9
VIP Cabin	9
Guest Stateroom Port	9
Crew Quarters	10
Helm	10
Deck Equipment	10
Mechanical Equipment	10
Remarks	11
Исключения	11
Отказ от ответственности	11
ФОТОГРАФИИ	12
Salon	12
Salon	12
Salon	12

Galley	12
Galley	13
Galley	13
Galley	13
Galley	13
Galley	13
Galley	13
Galley	14
Companionway	14
Companionway	14
Master Cabin	14
Master Cabin	14
Master Cabin	14
Master Cabin	15
Master Cabin	15
Master Cabin	15
Master Cabin	15
Master Cabin	15
Master Head	16
Master Head	16
Master Head	16
VIP Cabin	16
VIP Cabin	17
VIP Cabin	17
VIP Head	17
VIP Head	17
VIP Head	18
Guest Stateroom Port	18
Guest Stateroom Port	18
Guest Stateroom Port	18

Guest Head	19
Guest Head	19
Crew Quarters	19
Crew Quarters	19
Crew Quarters	19
Helm	19
Helm	20
Helm	20
Helm	20
Helm	20
Helm Stereo	20
Aft Deck	20
Aft Deck	21
Aft Deck	21
Aft Deck	21
Aft Deck	21
Aft Deck	21
Bow	21
Bow	22
Bow/Sunpad	22
Transom Shower	22
Transom	22
Swim Platform	22
Sunshade	22
Passerelle	23
Passerelle	23
Engine Room	23
Engine Room	23
Engine Room	23

Engine Room	23
Engine Room	24
Engine Room	24
Engine Room	24
Maryfer	24
Maryfer	24
Maryfer	24
Maryfer	25
Maryfer	25
Maryfer	25
Maryfer	25
КОНТАКТЫ	26
Контактная информация	26
Телефоны	26
Время работы	26
Адрес	26

ХАРАКТЕРИСТИКИ

Основная информация

Тип судна: Моторная яхта

Модельный год: 2016

Год постройки: 2015

Страна: United States

Размеры

Длина общая: 58' 0" (17.68m)

Ширина: 16' 0" (4.88m)

Макс. осадка: 4' 6" (1.37m)

Скорость, вместимость и масса

Водоизмещение: 64000 Pounds

Вместимость воды: 172 Gallons

Объем топливного бака: 793 Gallons

Размещение

Всего кают: 3

Всего ком. состава: 3

Каюты экипажа: 1

Корпус и палуба

Материал корпуса: Fiberglass

Информация о двигателе

Двигатели: 2

Производитель: MAN

Модель: 8V-1000

Тип двигателя: Inboard

Тип топлива: Diesel

ПОДРОБНОЕ ОПИСАНИЕ

Interior Arrangement

This Atlantis has a three stateroom three head layout with two island queens and a double bed in the guest stateroom. The master stateroom is full beam and spacious with a beautiful en-suite bathroom located midship. Her VIP stateroom is forward with island queen bed and full private bathroom. The guest stateroom offers a twin bed to port with full bathroom across the companion way. The galley is to starboard with full amenities and built in dishware and cupboard storage. To port across from the galley is a U-shaped lounge seating area with expanding table for dining. Decor highlights include beautiful hardwood floors and carpet with teak veneers and high gloss finishes throughout.

Exterior Arrangement

The 58's aft deck area offers open and inviting spaces to lounge. A hydraulic swim platform with hot and cold shower and swim ladder allows for easy access to the yacht from the ocean. Coming up to the main deck you have both port and starboard stairs with the added feature of a passerelle for stern docking and easy access. The aft deck features a large sunbed with headrest that can fold aft to create a bench seat facing forward to the main interior deck. The hardtop has a sunroof that opens and side windows for great ventilation when the helm air conditioning is not in use. The aft facing L-shaped lounge has an over sized table for dining as well as a fully loaded outside credenza with sink, grill, refrigerator and storage. The beautiful teak decks feature the new style white trim. Her helm area has an additional lounge seat to port as well as a double seat facing forward, allowing views unobstructed through the one piece windshield. The walk around deck forward brings you to another sunbed on the bow for additional space in the sun. Crew quarters are aft with head in lieu of the garage option.

Salon

- Carpet
- U-shaped lounge with expanding table
- Hillside port lights & blinds
- Overhead storage cabinets
- Entertainment center with LCD TV & DVD & Blu Ray
- LED interior lighting

Galley

- Four burner glass stovetop
- Dishwasher

- Stainless sink
- Microwave
- Fitted dishware storage
- Abundant storage cabinets
- Upright refrigerator & freezer
- Hardwood flooring

Companionway

- Third guest bathroom with vanity & separate stall shower
- Washer dryer combo unit

Master Cabin

- Full beam layout with king bed
- Night stands
- Reading lights
- Wardrobe lockers
- Oversized hull side windows with black out blinds
- LCD TV & Blu Ray
- Carpet
- LED lighting
- Full en-suite bathroom with vanity & storage
- Separate stall shower
- Separate enclosed toilet

VIP Cabin

- Located forward with island queen size bed
- Reading lights
- LED lighting
- Hull side windows & overhead escape hatch
- Full carpet
- Wardrobe storage
- LCD TV with Blu Ray
- Private bathroom with stall shower, full vanity & storage

Guest Stateroom Port

- Double bed outboard

- Reading lights
- Hull side port lights
- Overhead storage cabinets
- Carpet
- Hanging locker
- LCD TV

Crew Quarters

- Located aft with private access
- Single bed
- Vanity & sink
- Toilet/shower area

Helm

- Raymarine Gold package with Hybrid touch screen
- Radar, GPS chartplotter, auto pilot, depth indicator, VHF
- Maneuvering Joystick control Xenta for thruster & engines
- Video cameras on aft deck & engine room
- Chain counter control at helm for anchor system
- LED lights & carbon fiber dash panel
- AC vents
- MAN engine displays with controls including synchronizer
- Fusion stereo multi zone stereo system with Blu tooth
- Underwater lights (2)
- Full aft canvas enclosure with side access

Deck Equipment

- Teak decks
- Anchor windlass
- Sunbed on bow
- Full length rails to aft cockpit
- Hydraulic swim platform
- Passerelle for stern boarding
- Full canvas covers for cushions

Mechanical Equipment

- 60 Hertz shore cord with power retractor
- 110V outlets
- 20 kw Kohler generator
- Chiller system
- Oil change system
- Inverter battery charging system

Remarks

This 58 Atlantis is a well maintained vessel, offering sporty high performance with beauty and functionality. Her meticulously planned large interior and Italian design make this sport cruiser yacht a pleasure to show.

Исключения

При продаже яхты исключаются личные вещи владельца.

Отказ от ответственности

Компания предоставляет описание судна или яхты добросовестно, но не может гарантировать точность этой информации, а также не ручается за техническое состояние. Покупатель должен проинструктировать своих агентов или оценщиков исследовать представленную информацию более подробно, по собственному желанию. Продажа судна или яхты, изменение цены или снятие с продажи будет происходить без предварительного уведомления.

ФОТОГРАФИИ

Salon



Salon



Salon



Galley



Galley



Galley



Galley



Galley



Galley



Galley



Galley



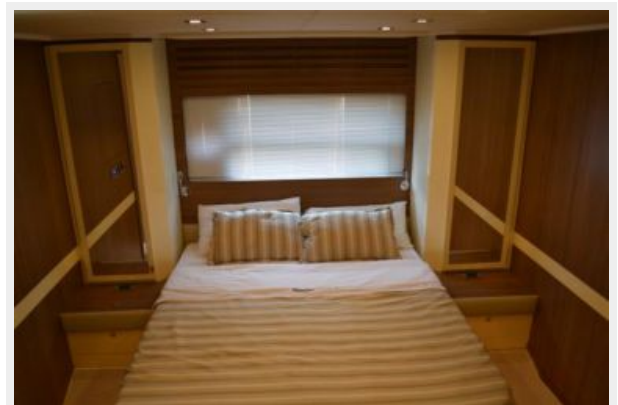
Companionway



Companionway



Master Cabin



Master Cabin



Master Cabin



Master Cabin



Master Cabin



Master Cabin

Master Cabin



Master Head



Master Head



Master Head



VIP Cabin



VIP Cabin



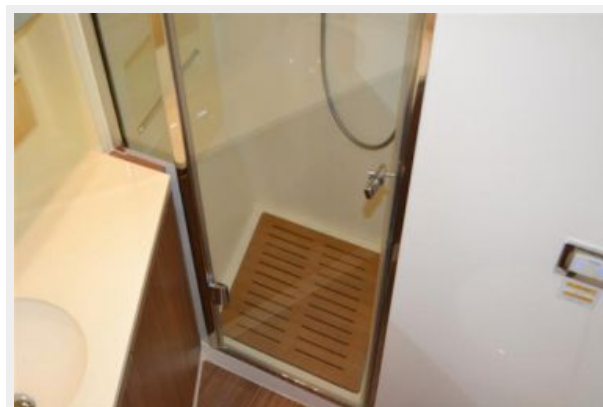
VIP Cabin



VIP Head



VIP Head



VIP Head



Guest Stateroom Port



Guest Stateroom Port



Guest Stateroom Port



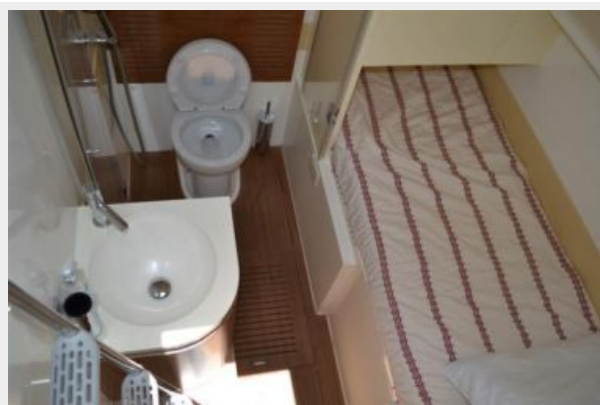
Guest Head



Guest Head



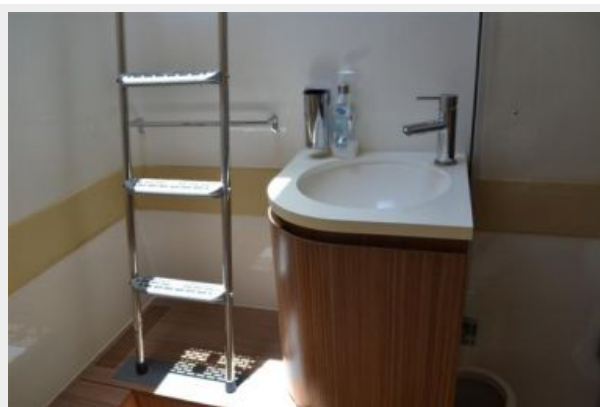
Crew Quarters



Crew Quarters



Crew Quarters



Helm



Helm



Helm



Helm



Helm



Helm Stereo



Aft Deck



Aft Deck



Aft Deck



Aft Deck



Aft Deck



Aft Deck



Bow



Bow



Bow/Sunpad



Transom Shower



Transom



Swim Platform



Sunshade



Passerelle



Passerelle



Engine Room



Engine Room



Engine Room



Engine Room



Engine Room



Engine Room



Engine Room



Maryfer



Maryfer



Maryfer



Maryfer



Maryfer



Maryfer



Maryfer



КОНТАКТЫ

Андрей Шестаков (Andrey Shestakov) – ведущий яхтенный брокер отдела продаж яхт и судов компании Shestakov Yacht Sales Inc. Официальный представитель Shestakov Yacht Sales Inc. для русскоговорящих клиентов в центральном офисе компании в Майами/Форт Лодердейл/Флорида/США.

Контактная информация

Email: andrey@shestakovyachtsales.com

Web: shestakovyachtsales.com

Телефоны

Краснодарский край: **+7(918)465-66-44**

США, Майами, Флорида: **+1(954)274-4435**

Время работы

Понедельник – Суббота: **9:00 - 21:00**
EDT

Воскресенье: **Закрето**

Адрес



Harbour Towne Marina, 850 NE 3rd St,
STE 213, Dania, FL 33004