

## SERENITY — IAG



**Судостроитель:** [IAG](#)

**Год постройки:** 2016

**Модель:** Моторная яхта

**Цена:** **ЦЕНА ЯХТЫ ПО ЗАПРОСУ**

**Местонахождение:** United States

**Длина общая:** 133' 0" (40.54m)

**Ширина:** 26' 6" (8.08m)

**Макс. осадка:** 7' 6" (2.29m)

**Крейс. скорость:** 15 Kts. (17 MPH)

**Макс. скорость:** 17 Kts. (20 MPH)

Купить **Serenity — IAG** а также выбрать подходящую вам яхту из нашего каталога яхт вам поможет опытный яхтенный брокер Андрей Шестаков. На сегодняшний день компания **Shestakov Yacht Sales Inc.** имеет большое количество яхт в собственном списке продаж, а также тесно сотрудничает со всеми крупными яхтенными производителями по всему миру.

Для того чтобы купить яхту **Serenity — IAG** а также проконсультироваться по любому вопросу связанному с покупкой, продажей, чартером яхт позвоните по телефону **+7(918)465-66-44**.

# ОГЛАВЛЕНИЕ

---

ОГЛАВЛЕНИЕ	2
ХАРАКТЕРИСТИКИ	4
Обзор	4
Основная информация	4
Размеры	4
Скорость, вместимость и масса	5
Размещение	5
Корпус и палуба	5
Информация о двигателе	5
ПОДРОБНОЕ ОПИСАНИЕ	6
Introduction	6
Walk Through	6
Accommodations	7
Appliances/Galley	7
Electronics	7
Electrical	8
Mechanical	8
Hull	9
Safety	9
Deck Equipment	9
Toys	9
Broker Comments	9
Исключения	10
Отказ от ответственности	10
ФОТОГРАФИИ	11
КОНТАКТЫ	38
Контактная информация	38
Телефоны	38

---

Время работы	38
Адрес	38

---

# ХАРАКТЕРИСТИКИ

## Обзор

This vessel features a one-of-a-kind option - an Elevator which services all 4 levels! Serenity was created by Evan K. Marshall Design (EKM) for charter or private use. She is a spectacular Tri-Deck Motor Yacht, the latest in EKM design. Her fit and finish are sure to impress the most discriminating yacht connoisseur. Major highlights include an interior **4-Level elevator**, floor to ceiling windows, multiple balconies (Salon, Master, and Skylounge), light box flooring, backlit onyx, and multiple entertaining spaces and private areas for 12 guests. A spectacular waterfall jacuzzi on the Flybridge and wading pool with backlit skylights showing through the ceiling of the main deck are designs unique to Serenity. Garage/Beach with exclusive Z-Lift Sytem that creates a perfect underwater beach allowing easier egress from the water for divers or swimmers. It may double as a passerelle or be conveniently stored creating a regular swim platform.

**Boarding by Appointment Only.**

## Основная информация

**Тип судна:** Моторная яхта

**Модельный год:** 2016

**Год постройки:** 2016

**Страна:** United States

**Верх:** Hardtop

**Открытая палуба мостика:** Да

**Кубрик:** Да

## Размеры

**Длина общая:** 133' 0" (40.54m)

**Ширина:** 26' 6" (8.08m)

**Макс. осадка:** 7' 6" (2.29m)

**Трапы:** 39' 0" (11.89m)

## Скорость, вместимость и масса

---

**Крейс. скорость:** 15 Kts. (17 MPH)

**Дальность на крейсерской скорости:**  
2500

**Макс. скорость:** 17 Kts. (20 MPH)

**Водоизмещение:** 500000 Pounds

**Чистый вес:** 363 Pounds

**Вместимость воды:** 2000 Gallons

**Объем топливного бака:** 9500 Gallons

## Размещение

---

**Всего кают:** 6

**Спальные места:** 12

**Всего ком. состава:** 9

**Каюты экипажа:** 4

**Койки экипажа:** 7

**Спальных мест экипажа:** 7

**Комм. состав экипажа:** 4

## Корпус и палуба

---

**Материал корпуса:** Fiberglass

**Комплектация корпуса:** Semi-Displacement

**Дизайнер корпуса:** Hydrotech

**Дизайнер экстерьера:** Evan K. Marshall

**Дизайнер интерьера:** Evan K. Marshall

## Информация о двигателе

---

**Двигатели:** 2

**Производитель:** Caterpillar

**Модель:** C32

**Тип двигателя:** Inboard

**Тип топлива:** Diesel

---

# ПОДРОБНОЕ ОПИСАНИЕ

---

## Introduction

---

Serenity was created by Evan K. Marshall Design (EKM) design for charter or private use. She is a spectacular Tri-Deck Motor Yacht, the latest in EKM design. The systems are top brand US purchased for good service. Her fit and finish are sure to impress the most discriminating yacht connoisseur. Major highlights include an interior 4-Level elevator, floor to ceiling windows, multiple balconies (Salon, Master, and Skylounge), light box flooring, backlit onyx, and multiple entertaining spaces and private areas for 12 guests. A spectacular waterfall jacuzzi on the Flybridge and wading pool with backlit skylights showing through the ceiling of the 01 deck are designs unique to Serenity. Garage/Beach with exclusive Z-Lift System that creates a perfect underwater beach allowing easier egress from the water for divers or swimmers. It may double as a passerelle or be conveniently stored creating a regular swim platform. **Boarding by Appointment Only.**

## Walk Through

---

Main Deck~ Enter the Main Salon via automatic sliding glass doors made by PCM. Huge floor to ceiling windows are framed in gorgeous backlit onyx, which is featured on the cabinet tops throughout the vessel. Dark walnut soles, Anegre (African Maple) cabinetry and lacewood accents offer a natural base on which tasteful accents reside. A comfortable L-shaped sofa is located to port with a drop down television concealed in the ceiling. Opposite are iron stairs leading to the Skylounge. Forward is glass dining table with textured lighting above and formal seating for 12. From the Dining forward to port is the galley with forward access stairs to crew. From the Dining forward to starboard, an automatic sliding door separates access to Master and lower staterooms. There is an access door for the elevator as well as a Day Head. Continuing forward is a study area, personal galley access for the Master, and the Master Stateroom. The Master Stateroom has one of a kind balconies to both port and starboard with automatic watertight sliding doors. The His and Her En Suite is engulfed in an calming jade colored onyx with hand-laid stone inlays. Pilothouse/Skylounge Deck~ The next level up is the Pilothouse/Skylounge Deck. This is arguably the most enticing area of the vessel with endless entertainment possibilities. There are balconies on either side, with sliding door to port balcony. An intimate seating area with electric fireplace and starboard balcony which offers a forward view from an indoor vantage point. There is a card table for 4 and a bar for 6. Aft deck seating for 12 at a round table with a unique view through overhead oval skylights to a wading area above. Returning back inside and continuing forward to port, light box stone flooring leads the way to a dream-come-true VIP stateroom with ensuite. The hallway also leads to a Day Head, the elevator access, the Captain's Quarters, and finally, the Pilothouse. The Pilothouse features heavy duty port and starboard access doors, reverse shear windows, and a full raised bench seating area with table. There is a vast array of electronics. Sundeck/Flybridge Deck ~ The Sundeck is also accessible by Elevator which is fascinating to witness, as the concealed elevator pops up from below deck. There is a hinged "hidden" helm station with convertible

seating aft (tracks allow for configuration of seating to alternate from forward facing to aft facing, depending on preferences). The full hard top is equipped with a refreshing misting system.

There's a 6 person Jacuzzi with waterfall and a 6" wading area aft with round, back-lit skylights built in to the deck. As with all levels, this deck offers a convenient Day Head. A full bar and Grill round out the area.

## Accommodations

Serenity features 6 Owner/Guest Staterooms. The full beam master is forward on the main deck. There are 4 spacious staterooms below deck. The 2 aft staterooms are divided by a partition, making this space either a full beam suite with his and her heads and sitting area or 2 king staterooms. The two forward staterooms feature queen berths. An additional VIP Stateroom is located on the Skylounge level forward of the living space. All staterooms feature en suite heads. In total, there are accommodations for up to 12 Owners/Guests. Crew Accommodations are forward below deck and may be accessed from the galley or the Foredeck. There is also a access door to the lower staterooms, making it convenient for cleaning. The area is complete with dining area and lounge. There are 3 crew staterooms/3 heads accommodating up to 6 crew below deck. The captains cabin with en suite head is on the Skylounge level forward.

## Appliances/Galley

Sub-Zero refrigerator U-Line refrigerator Isotherm marine refrigerators Miele under counter wine cooler Uline ice makers (2) Sub-Zero under counter refrigerator UC24RO Insinkerator instant hot water dispenser Miele ceramic cooktop Viking convection/conventional microwave Miele electric barbecue Viking outdoor gas grill Miele coffee system Insinkerator food waste disposer Napoleon electric fireplace Viking trash compactor Frosty drink machine Miele dishwasher G4220 & G4225 Miele dishwasher G4580 Miele washer PW6065 Miele tumble dryer PT7136 Miele vented dryer Kohler strainer Delta faucet for galley Cospolich walk-in refrigerator/freezer - Crew Area

## Electronics

**Radar:** Furuno NAVNET 3 D black box multi function display - Nav.Rack & Pilothouse Furuno DDRS12A 12kW, 72nm Furuno GP330B NMEA 2000 GPS receiver NavNet blackbox systems Furuno 2117 Blackbox radar 96 nm 12 kW transmitter - Nav. Rack & Pilothouse **GPS:** Furuno GP33 GPS/WAAS Navigator - Pilothouse **Sounder:** Furuno FCV1200BB, dual frequency black box fishfinder - Pilothouse Furuno 526TID-HDD bronze thru hull transducer **Electronic Charting System:** KEP Marine computer - i5 rack with Nobeltech Timezero Trident configured pack, Furuno Radar plus pack, Gyration Go Pro - Pilothouse **Digital Instruments:** Furuno FI-503 - digital data display - Pilothouse/Wing Station Furuno FI-502 - digital display, wind direction - Pilothouse/Wing Station Furuno RD33 - navigational data display - Flybridge/Capt Cabin Furuno DT 800MSF - digital depth and temperature sensor NMEA2000 Furuno 200WX - ultrasonic

weather station Airmar USB - connects NMEA to computer **Ultrasonic Speed Log** Airmar C4500 - ultrasonic speed and temperature sensor **Autopilot** Simrad AP70 pilothouse Simrad AP70 flybridge Simrad Job Lever FU80 - wing stations/pilothouse/flybridge **Gyro** Simrad GC80 - pilothouse Simrad Digital HR80 heading repeater - pilothouse Furuno PG500R rate heading sensor **AIS System** Furuno FA150 AIS - AIS transponder - pilothouse **VHF** Sailor 6222 Class A Radiotelephone - pilothouse Sailor 6201/6203 handsets Sailor 6204 Control speaker microphone - flybridge, galley, crew Polyplanar VHF extension speakers **WIFI/Wireless System** ThinkCentre M930 SFF pro desktop WAVE WIFI EC-HP - ship to shore communications **VSAT** KVH TracPhone V7-IP **Monitors** KEP 19" and 15" monitors - pilothouse/flybridge KEP 7" Sunlight Bridgeview controller for KEP monitors and Extron switcher - pilothouse **Security/Camera System:** Palladium Simon Monitoring System CCTV Ssystem Palladium consilium fire system Safety Siren gas detection IC REALTIME DVR-Flex 16E 16 channel DVR IRIS 001 Dual module water resistant camera - gangways IRIS116-36 360 degree continuous pan - mast IRIS 106 IP66 Water resistant AIRMAR underwater camera FLIR M-324L nightvision camera system EPIRB **Searchlight:** ACR RCL-600A ACR-1942 **Communications:** KVH TracPhone

## Electrical

(2) Northern Lights Generators 99 kw Northern Lights Odecs system Atlas 75 KVA frequency converter Atlas seamless transfer LED interior lighting Atlas Marine Systems A/C System Mastervolt DC system Ocean LED underwater lighting Lutron lighting control system

## Mechanical

**Propulsion:** ZF 3000 series marine transmission C32 Twin Marine engines EIAPP Certificates 5 blade Michigan propellers **Tanks/Piping:** Delta T tank ventilation system Gems tank sounding system TE Sensor- tank sounding Press Fit Piping System - copper nickel for raw water & stainless steel for fuel **Fuel:** Racor fuel filter/water separator Fintek level indicator Alfa Laval Oil water separator Fill Rite high flow **Compressed Air:** Jun Air oil-less Compressed Air System BAUER diving compressor **Raw Water Cooling:** Sting Ray Saltwater pressure system **Fire and Ballast System:** Yanmar industrial engines - emergency bilge MP pumps - backup bilge pumps **Bilge water systems:** Arid Bilge Systems Oil water separator BilMon bilge alarm Xylem stand bilge pump MP Pumps Jabsco oil drain pumps **Refrigeration:** Cospolich modular walk-in freezer **Water Systems:** (3) Torrid marine electric water heaters, 40 gallons each Spot Zero reverse osmosis system Sanitron ultraviolet water purifiers Aquastat thermostat for circ pumps Pelican water systems - water softening, conditioning (2) Sea Recovery Watermakers 150 gallons/hour Alfa-Level Mod #MAB104 Octo Marine Silver Angel ironizer Headhunter black water system Headhunter grey water system Headhunter chilled water system **Ventilation:** Marvair reverse cycle chiller & air handlers (2) Dometic A/C chillers 12 ton Micro Air Chiller control panel Delta T Systems ventilation control system A-60 Marine fire damper Delta T Systems moisture eliminator **Hydraulics:** ABT TRAC stabilizers - 4 fin zero speed American bow thruster 100 hp American stern thruster 40 hp Jastram steering gear system Jastram



hydraulic steering system ABT TRAC hydraulic stabilizer system ABT TRAC Hydraulic thruster system Ocean Stailless Z Lift hydraulic deck outfitting system Nautical Structures hydraulic davit system Nautical Structures passerelle Nautical Structures Euro 1600 davit **Anchoring System:** Maxwell Vertical Windlass 6000 series Maxwell Capstan 3000-4000 series **Interior ELEVATOR:** Lift E Motion 4 Level elevator

---

## Hull

---

Alexseal Paint Carbon fiber mast & hardtop 5 blade Michigan Props Hull configuration has prop tunnels and keel & skag are deepest point Ocean Stainless Z-lift extendable transom platform Carbon fiber mast and hard top Aritex deck hatches PCM watertight doors Freedman Engine Room door

---

## Safety

---

(4) Viking 10 person rafts USCG & SOLAS

EPIRB ACR Mod #RLB37 Caf #1

---

## Deck Equipment

---

1/2" teak decks silver caulk Carbon fiber Tide Rider ladder (2) Glendinning cable masters - 3 phase 180-500 volts Exalto windshield wipers Dometic defroster Kahlenberg air horns ACR RCL 600A remote control searchlight (2) Wing Stations Forward Full seating on foredeck with Sunshade GARAGE/BEACH - Exclusive Z-Lift System creates a perfect underwater beach allowing easier egress from the water for divers or swimmers. It may double as a passerelle or be conveniently stored creating a regular swim platform.

---

## Toys

---

(2) Wave Runners Dive Compressor Slide (2) Seabobs Dive Shop Fishing tackle

---

## Broker Comments

---

Serenity is IAG's 7th large yacht delivery in the last 6 years. Following the highly successful 140' King Baby delivery in 2016, this is the second Evan Marshall design creation from the same shipyard delivered less than one year later. With exciting revolutionary fixed balconies rarely seen in yachting, this makes Serenity a real head turner in every port she visits!

Complete construction supervision by a build team of highly experienced American yacht captains and yacht engineering specialists over the past 3 years, delivered this exciting new IAG

to the North American market.

This 6 stateroom tri-deck design with a 4 level elevator ticks all of the boxes for any owner's comfort requirements. The interior volume is equal to a 50 meter yacht and she feels spacious and bright with expanded glass windows everywhere, exceeding all expectations. Serenity is full of surprises. Wait until you see the extra features related to the swim platform with its beach transformation and very large cabana space!

Owner change in plans makes this exceptional yacht available immediately without the normal 30 month delivery wait.

---

## **Исключения**

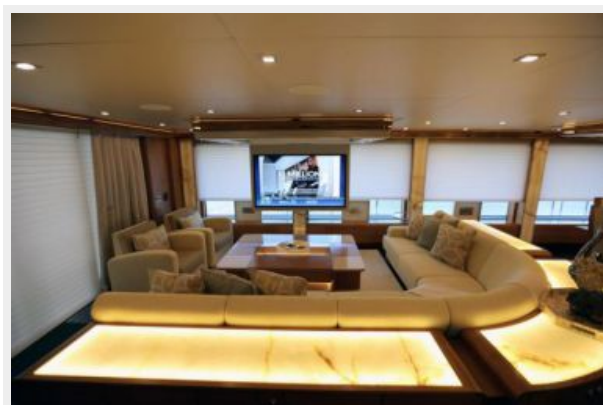
При продаже яхты исключаются личные вещи владельца.

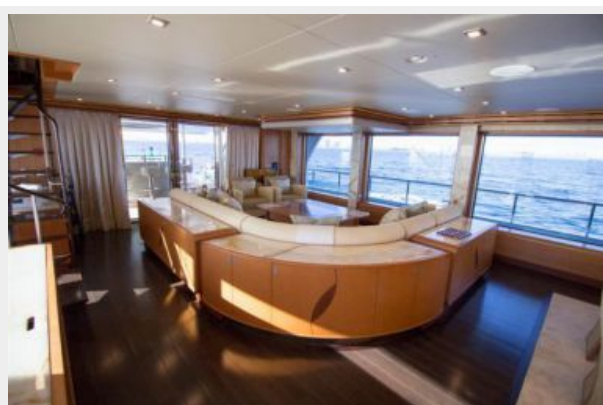
---

## **Отказ от ответственности**

Компания предоставляет описание судна или яхты добросовестно, но не может гарантировать точность этой информации, а также не ручается за техническое состояние. Покупатель должен проинструктировать своих агентов или оценщиков исследовать представленную информацию более подробно, по собственному желанию. Продажа судна или яхты, изменение цены или снятие с продажи будет происходить без предварительного уведомления.

# ФОТОГРАФИИ

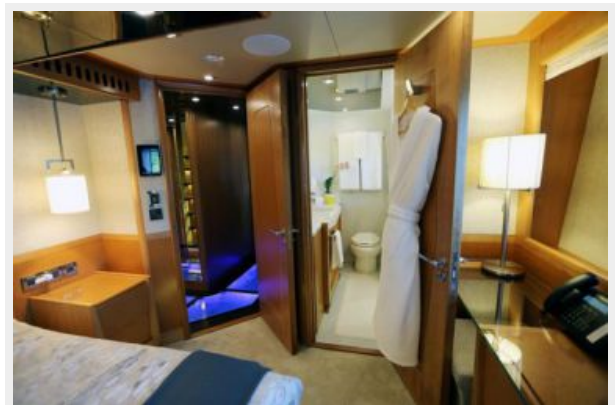




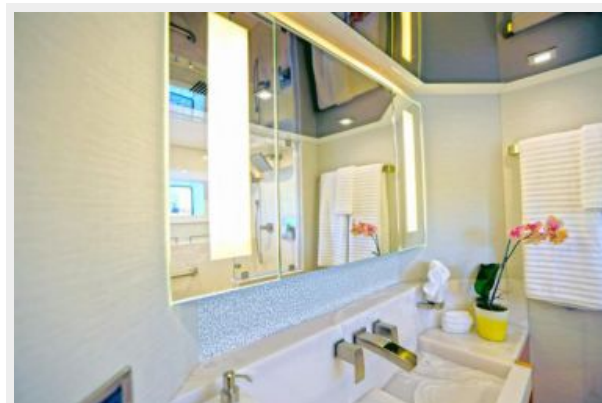


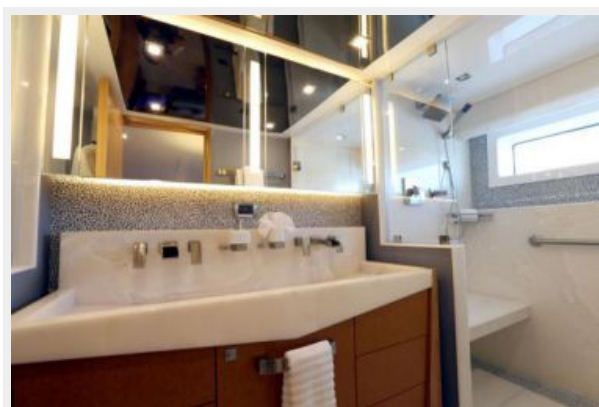


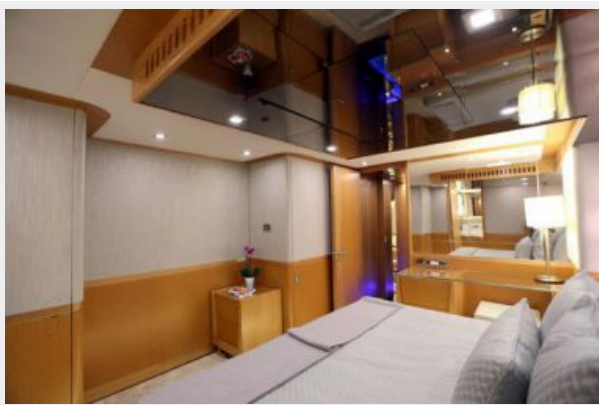


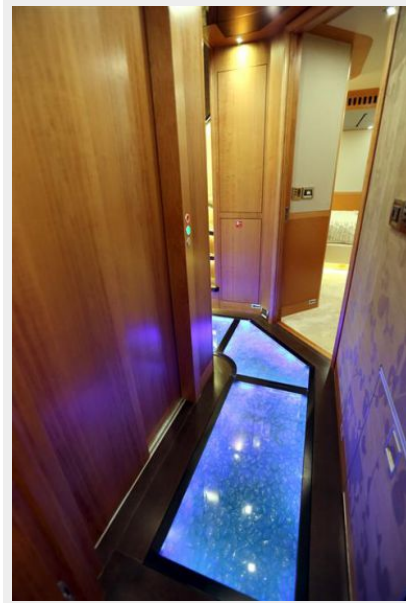






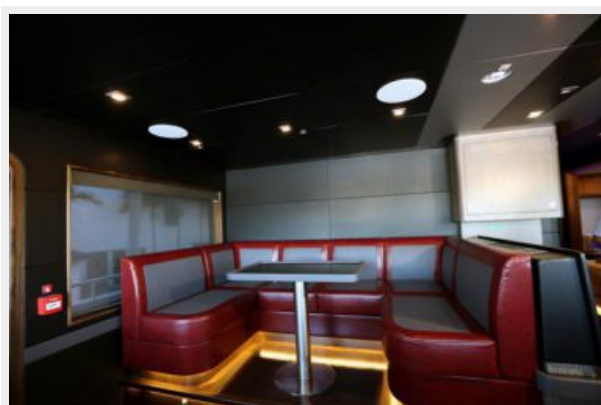
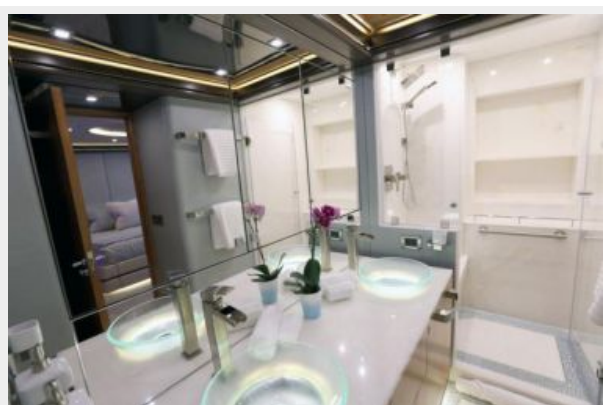
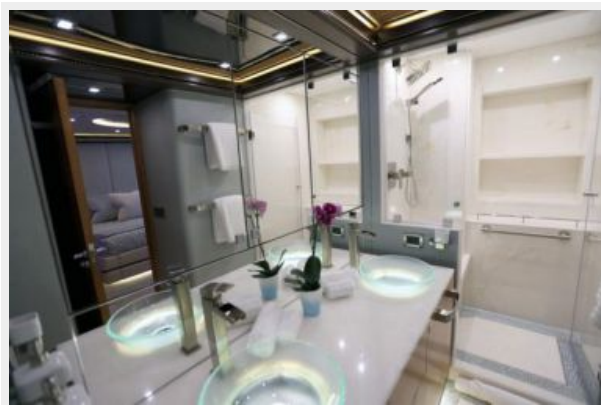


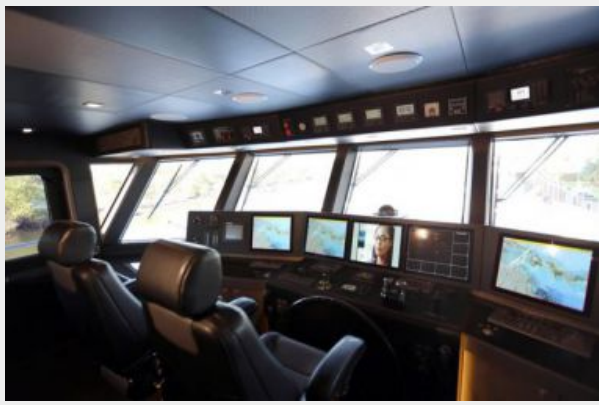




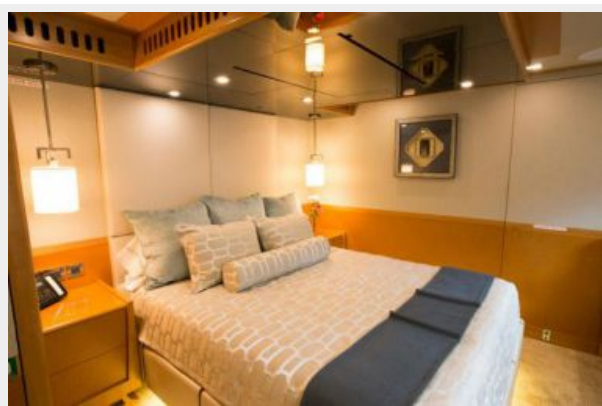




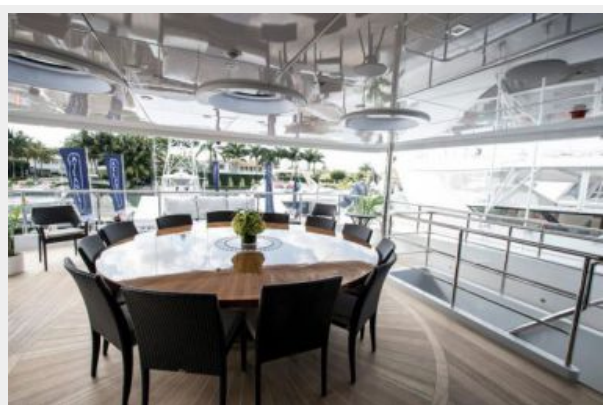


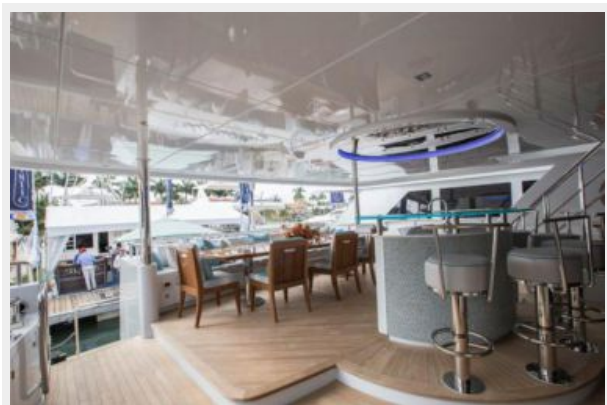














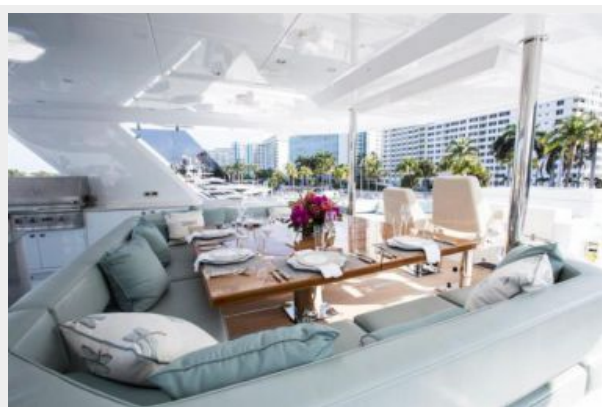


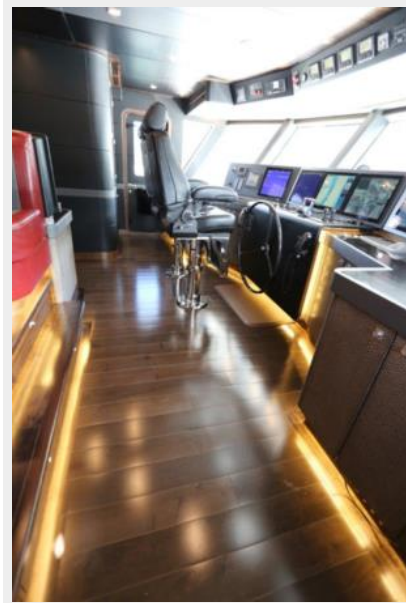


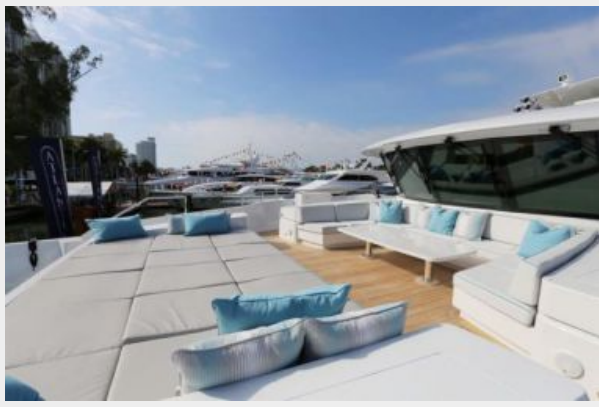














# КОНТАКТЫ

---

Андрей Шестаков (Andrey Shestakov) – ведущий яхтенный брокер отдела продаж яхт и судов компании Shestakov Yacht Sales Inc. Официальный представитель Shestakov Yacht Sales Inc. для русскоговорящих клиентов в центральном офисе компании в Майами/Форт Лодердейл/Флорида/США.

## Контактная информация

---

Email: [andrey@shestakovyachtsales.com](mailto:andrey@shestakovyachtsales.com)

Web: [shestakovyachtsales.com](http://shestakovyachtsales.com)

## Телефоны

---

Краснодарский край: **+7(918)465-66-44**

США, Майами, Флорида: **+1(954)274-4435**

## Время работы

---

Понедельник – Суббота: **9:00 - 21:00**  
EDT

Воскресенье: **Закрито**

## Адрес

---



Harbour Towne Marina, 850 NE 3rd St,  
STE 213, Dania, FL 33004