

SCARLET — AZIMUT



Судостроитель: [AZIMUT](#)

Год постройки: 2008

Модель: Моторная яхта

Цена: **ЦЕНА ЯХТЫ ПО ЗАПРОСУ**

Местонахождение: United States

Длина общая: 86' 0" (26.21m)

Ширина: 19' 1" (5.82m)

Макс. осадка: 4' 5" (1.35m)

Крейс. скорость: 30 Kts. (35 MPH)

Макс. скорость: 42 Kts. (48 MPH)

Купить **Scarlet — AZIMUT** а также выбрать подходящую вам яхту из нашего каталога яхт вам поможет опытный яхтенный брокер Андрей Шестаков. На сегодняшний день компания **Shestakov Yacht Sales Inc.** имеет большое количество яхт в собственном списке продаж, а также тесно сотрудничает со всеми крупными яхтенными производителями по всему миру.

Для того чтобы купить яхту **Scarlet — AZIMUT** а также проконсультироваться по любому вопросу связанному с покупкой, продажей, чартером яхт позвоните по телефону **+7(918)465-66-44**.

ОГЛАВЛЕНИЕ

ОГЛАВЛЕНИЕ	2
ХАРАКТЕРИСТИКИ	3
Обзор	3
Основная информация	3
Размеры	3
Скорость, вместимость и масса	3
Размещение	4
Корпус и палуба	4
Информация о двигателе	4
ПОДРОБНОЕ ОПИСАНИЕ	5
Notable Features	5
Refit Details	5
Accommodations	6
Исключения	7
Отказ от ответственности	7
ФОТОГРАФИИ	9
КОНТАКТЫ	24
Контактная информация	24
Телефоны	24
Время работы	24
Адрес	24

ХАРАКТЕРИСТИКИ

Обзор

"Scarlet" is a unique opportunity to purchase a perfectly maintained water-jet propulsion Azimut 86 S model, that has been imported US Duty Paid & Coast Guard documented in Florida. She is ideal for both private, or commercial charter use in the United States. Her water-jet propulsion with joystick option makes her the ultimate luxury performance yacht that is both smooth and stress-free to run in shallow FL or Bahamian waters! A full refit in 2017 not only improved upon her layout, (King, Queen, Queen, Twin) but modernized all electronics aboard and added a long list of desirable equipment. A highly experienced full time Captain and only certified mechanics keep this yacht in turnkey operating condition. Tender and Jet Ski included in the sale!

Основная информация

Тип судна: Моторная яхта	Подкатегория: Jet Boat
Модельный год: 2008	Год постройки: 2008
Год обновления: 2017	Вид обновления: Full
Страна: United States	Верх: Open
Кубрик: Да	

Размеры

Длина общая: 86' 0" (26.21m)	Ширина: 19' 1" (5.82m)
Макс. осадка: 4' 5" (1.35m)	

Скорость, вместимость и масса

Крейс. скорость: 30 Kts. (35 MPH)	Макс. скорость: 42 Kts. (48 MPH)
Водоизмещение: 136686 Pounds	Чистый вес: 94 Pounds
Вместимость воды: 290 Gallons	Объем топливного бака: 1584 Gallons

Размещение

Всего кают: 4

Всего коек: 8

Спальные места: 8

Всего ком. состава: 4

Каюты экипажа: 1

Койки экипажа: 3

Спальных мест экипажа: 3

Комм. состав экипажа: 1

Корпус и палуба

Материал корпуса: Fiberglass

Материал палубы: Teak

Комплектация корпуса: Planing

Цвет корпуса: Red

Дизайнер экстерьера: Stefano Righini

Дизайнер интерьера: Carlo Galeazzi

Информация о двигателе

Двигатели: 2

Производитель: MTU

Модель: 16V2000 M91

Тип двигателя: Inboard

Тип топлива: Diesel

ПОДРОБНОЕ ОПИСАНИЕ

Notable Features

1. WaterJet Propulsion for 40+ Knot Top Speed, unmatched maneuverability, and a mere 4.5' draft! One of Azimut's most popular models - Naval architecture by Stefano Righini and interior design by Carlo Galeazzi.
2. US Duty Paid, American flagged, Coast Guard documented vessel.
3. Currently operates with an excellent income producing Charter Record in FL & Bahamas
4. Full time Captain & Crew maintained, all Engine and Generator service done by certified mechanics, all new Battery chargers, Last dry dock period Sept 2018 - (MTU 2k Service, Bottom Paint, Zincs, Hamilton Jet inspection)
5. Desirable 4 Stateroom layout sleeps 8 guests plus 3 separate crew. (Full Beam King Master, VIP Queen, port Queen, starboard Twin) Custom made pillow-top mattresses, Custom Designer Interior Fabrics, full set of Terrycloth exterior cushion covers.
6. Largest in-class exterior spaces defining a true open sport cruiser. Gigantic sunpads bow and aft with adjustable seating. Sunroof spans the entire length of the salon to let in the light or stargazing at night.
7. 2017 Refit: New Navigational & Audio Visual Electronics Package, reconfigured port stateroom to Queen, enlarged garage with 2nd winch, New equipment for Galley, and a long list of other additional new equipment detailed below

Refit Details

1. Most recently: Sept 2018 Yard period (MTU 2000 hr service, New Bottom paint, New Zincs, Certified Hamilton Jet/ Nozzle inspection plus new seals, Complete Cleaning of tanks, AC units acid washed)
2. Navigational Electronics package: (Dual 17" Raymarine Hybrid Touch GPS, New depth sounder, transducer / scanner, new Humphree Trim tab and stabilizer system, New VHF Antennas, new infrared Camera, new ACR searchlight, all on an uninterrupted power source system. New triple Kallenberg horns.
3. KVH HD Satellite, with new 4K Sony/Samsung TVs with Direct and Apple TV for all staterooms. 3000 Watt JL Audio / Sonos Exterior Sound System controlled by an iPad interface. Bose Surround Sound interior sound system.
4. Transformers installed for seamless US 100 amp 250v Power supply plus new Shore power cord. New set of Mastervolt Battery chargers.
5. \$30,000 in Custom pillow-top Mattresses, plus rebuilt port cabin to form a Queen berth configuration. New Interior soft goods, custom window treatments, complete set of terrycloth exterior cushion covers. V cool film covers all the Salon windows and windshield to improve AC efficiency.

6. Miele Galley appliances with Stainless Steel countertops, Inverted Washer/ Dryer Combo Unit, added 60 Bottle Wine Cooler
7. 2 new higher capacity Water Heaters.
8. Custom 2nd hydraulic winch and cradle system for launching 2 waverunners, Spare Fortress Anchor. 2 x 12 person life rafts.
9. 3 LED underwater lights, upgraded hardware throughout.

Accommodations

4 Cabin version: Full Beam King Master, VIP Queen, Port Queen, Stbd Twin.

Crew: 3 Berths in 2 separate cabins with shared head. **Engine Room**

Mains: 2 x 16V2000 M91 - 2020 Hrs. Double Racor Filters Generators: 2 x 22Kw Kohler (824 and 553 hrs since rebuild)

Idromar watermaker,

2017 re-done exhaust covers. New Mastervolt Battery Chargers and Shore Power Cord (2017)

Cruisair AC Compressors. Pump for oil change in the engine room Cameras for Engines room.

External

Fiberglass Hull and superstructure painted Red/White 7 portholes per side and oversized hullside windows in Master Cabin.

Teak Decks throughout with natural finish wood tables. Stainless Steel guard rails and rubrail, Midship cleats (four in total each side) Stainless Steel support poles for complete aft section canvas shade.

Fridge, BBQ, and Sink in the bar cabinet in aft deck. Custom coolers with seating. Stainless steel anchor and 300' of chain with fresh water wash down. (spare fortress anchor) NEW JL Audio 3000 watt amplifier 6 speaker system plus subwoofer

Salon & Internal Layout

Wenge Wood finish throughout Salon has custom Silk curtains, and V Cool Film on all windows. Wood Floors with custom carpet. Hydraulic opening Sunroof Staircase to lower deck + corridor: carpet with perimeter wooden bands Salon 3 sofa setup with expandable table and custom ottoman. KVH hd Satellite TV for USA New 4k 50" sony xbr with apple tv and blu ray and direct tv. Wifi. Bose 5 speaker surround sound.

Custom Accent Lights throughout.

Galley:

Stainless fridge and freezer Trash disposal inside the sink Icemaker All appliances - Miele , new 60 bottle wine cooler Stainless Steel Chef's countertop New inverted washer and dryer Miele 4 burner cooktop Miele convection oven Miele dishwasher **Master & Guest Staterooms:**

King Size bed with Settee table with 2 loungers under port hillside windows, vanity table on starboard. All Cabins carpet, heads wood flooring. New Samsung 4K flatscreen Sonos Launchport Av control pad Mini Fridge Panoramic windows and portholes

All **Guest Staterooms** have custom made spring / pillow top mattresses, and new Samsung 4K TVs and Wenge wood cabinetry. Vacuflush Heads **Helm**

Hamilton Maneuvering Joystick, Bow Thuster, MTU Displays Complete new Humphree Auto Trim & Stabilizer System. Nightvision infrared camera / engine room aft deck camera New Raymarine radar / scanner New Raymarine depthsounder transducer built in flush New Dual Raymarine 17" Hybrid touch GPS units New vhf antennas New ups (uninterrupted power supply) New ACR 1500 searchlight

Stern Toy Garage

Hydraulic Stern Door with backlit stainless steel letter wiring, and lowering swim platform. Storage for 2 large craft, (Tender or waverunners) with 2 hydraulic winches and launching cradles. increased storage capacity for multiple water-toys and inflatables. (Not included) Upgraded heavy duty swim ladder and stern railings. Fresh water shower with nonskid surface applied around stern.

Additional Equipment & Safety

2 12 person inspected Liferafts. Spare Fortress Anchor. Upgraded Hardware strength throughout the vessels hinges and cleats. 2 New Waterheaters with new thermostats. New higher capacity black water pump. V Cool Film on all windows.

Исключения

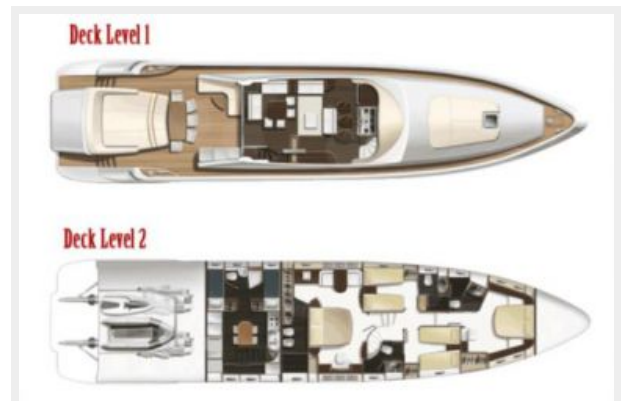
При продаже яхты исключаются личные вещи владельца.

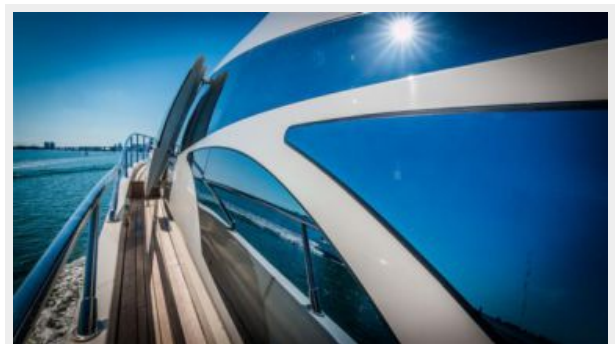
Отказ от ответственности

Компания предоставляет описание судна или яхты добросовестно, но не может гарантировать точность этой информации, а также не ручается за техническое состояние. Покупатель должен проинструктировать своих агентов или оценщиков исследовать представленную информацию более подробно, по собственному желанию.

Продажа судна или яхты, изменение цены или снятие с продажи будет происходить без предварительного уведомления.

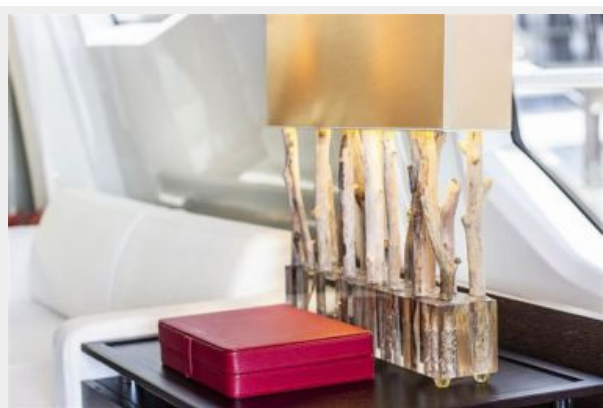
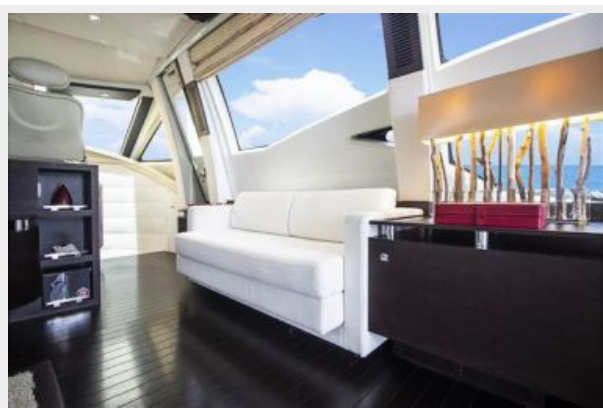
ФОТОГРАФИИ

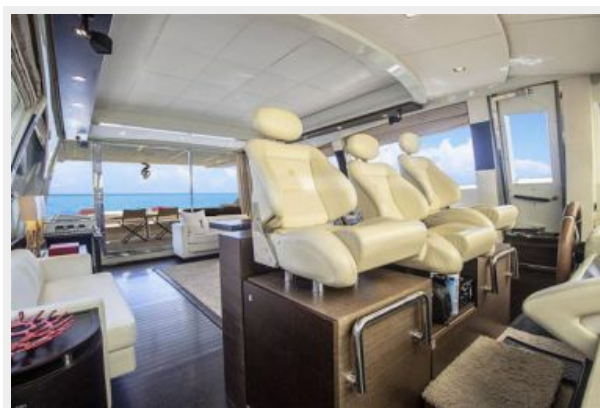


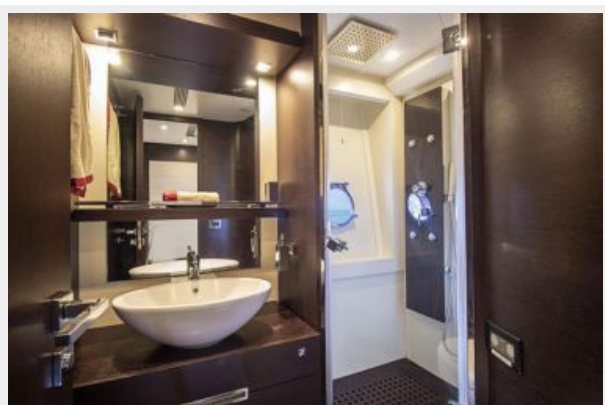
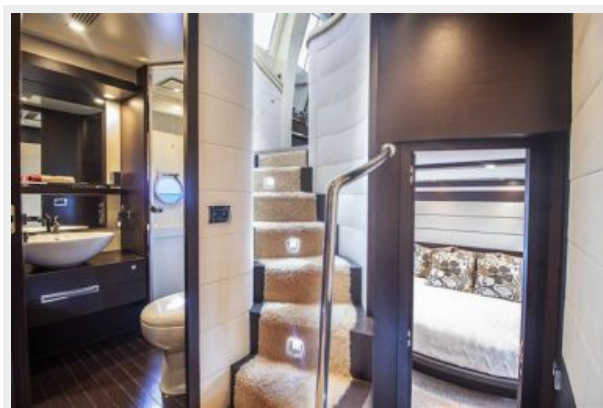


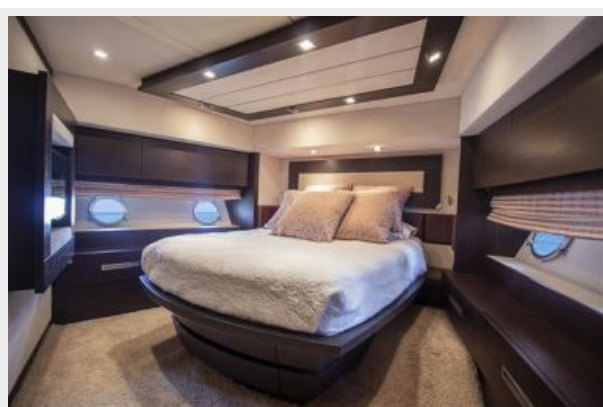
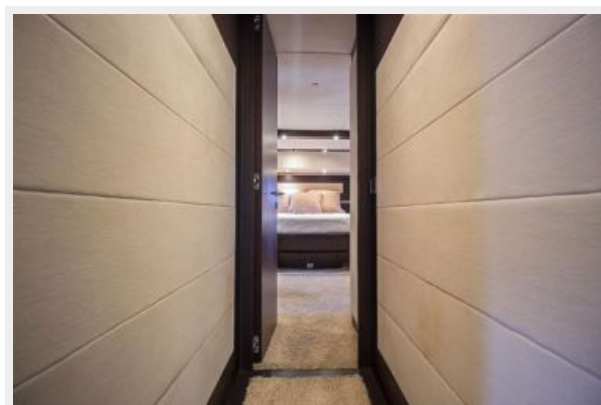
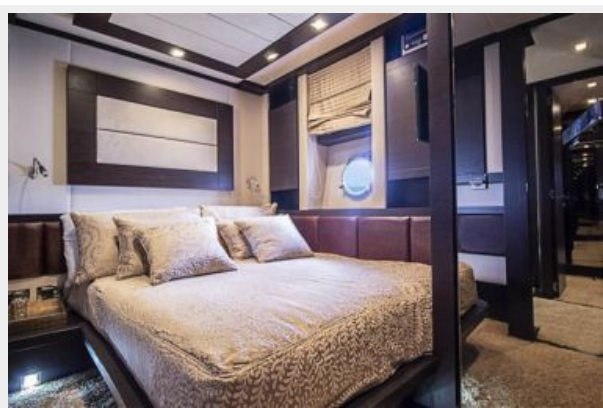


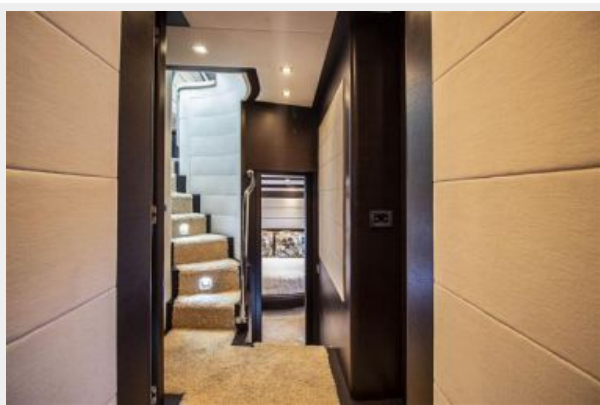


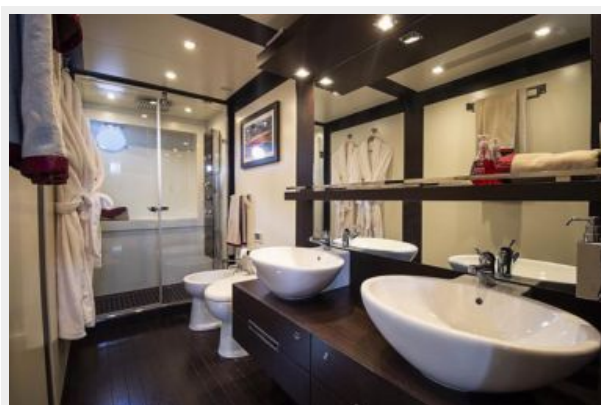
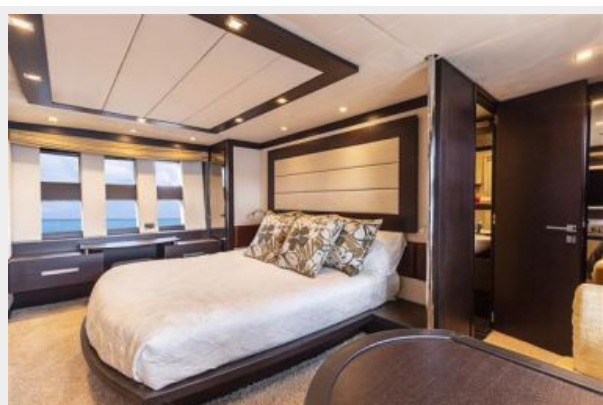


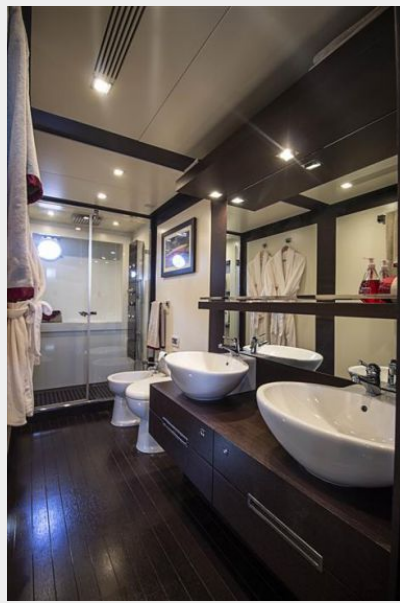


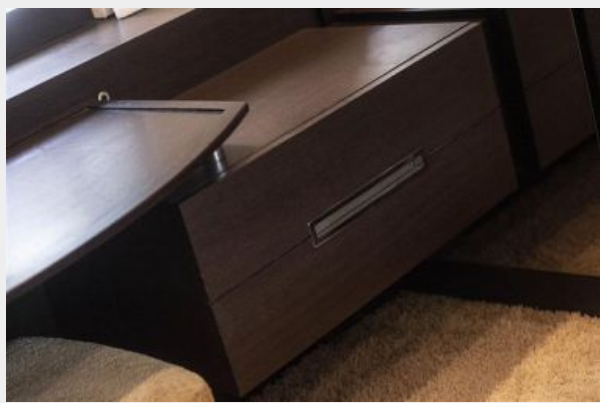




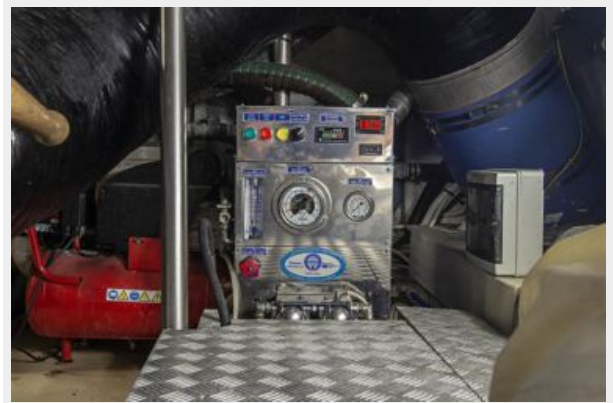














КОНТАКТЫ

Андрей Шестаков (Andrey Shestakov) – ведущий яхтенный брокер отдела продаж яхт и судов компании Shestakov Yacht Sales Inc. Официальный представитель Shestakov Yacht Sales Inc. для русскоговорящих клиентов в центральном офисе компании в Майами/Форт Лодердейл/Флорида/США.

Контактная информация

Email: andrey@shestakovyachtsales.com

Web: shestakovyachtsales.com

Телефоны

Краснодарский край: **+7(918)465-66-44**

США, Майами, Флорида: **+1(954)274-4435**

Время работы

Понедельник – Суббота: **9:00 - 21:00**
EDT

Воскресенье: **Закрыто**

Адрес



Harbour Towne Marina, 850 NE 3rd St,
STE 213, Dania, FL 33004