

SHE'S NO LADY — FONTAINE PAJOT



Builder: FONTAINE PAJOT

Year Built: 2013

Model: Catamaran

Price: PRICE ON APPLICATION

Location: United States

LOA: 41' 0" (12.50m)

Beam: 22' 1" (6.73m)

Max Draft: 3' 8" (1.12m)

Our experienced yacht broker, Andrey Shestakov, will help you choose and buy a yacht that best suits your needs **She's No Lady — FONTAINE PAJOT** from our catalogue. Presently, at Shestakov Yacht Sales Inc., we have a wide variety of yachts available on our sale's list. We also work in close contact with all the big yacht manufacturers from all over the world.

If you would like to buy a yacht **She's No Lady — FONTAINE PAJOT** or would like help answering any questions concerning purchasing, selling or chartering a yacht, please call **+1(954)274-4435**

TABLE OF CONTENTS

TABLE OF CONTENTS	2
SPECIFICATIONS	4
Overview	4
Basic Information	4
Dimensions	4
Speed, Capacities and Weight	4
Accommodations	4
Hull and Deck Information	4
Engine Information	5
DETAILED INFORMATION	6
Recent Work Done	6
Galley/Comfort Options	6
Electronics & Navigation	6
Electrical	6
Anchor/Winches/Hardware	7
Water	7
Entertainment	7
Rigging & Sails	7
Canvas/Cushions	7
Dinghy	8
Safety	8
Manufacturer Provided Description	8
Exclusions	8
Disclaimer	8
PHOTOS	9
CONTACTS	15
Contact details	15
Telephones	15

Office hours	15
Address	15

SPECIFICATIONS

Overview

She's No Lady is the perfect example of a turn key cruising catamaran. There is truly nothing like it on the West Coast! The perfect size for a cruising couple or small family. She is completely outfitted with everything needed for living aboard or sailing off to Mexico and beyond. Due to an EPA engine recall, she just received 2 BRAND NEW Volvo 30 HP engines with "ZERO" hours on them. She's like a brand new boat! With the catamaran market on fire right now, "**She's NO Lady**" is not going to last. Call for personal tour today!

Basic Information

Category: Catamaran

Model Year: 2013

Year Built: 2013

Country: United States

Dimensions

LOA: 41' 0" (12.50m)

Beam: 22' 1" (6.73m)

Max Draft: 3' 8" (1.12m)

Speed, Capacities and Weight

Displacement: 7600 Pounds

Water Capacity: 70 Gallons

Fuel Capacity: 80 Gallons

Accommodations

Total Cabins: 3

Total Heads: 2

Hull and Deck Information

Hull Material: Fiberglass

Hull Configuration: Catamaran

Engine Information

Engines: 2

Manufacturer: Volvo

Model: D1-30F

Engine Type: Inboard

Fuel Type: Diesel

DETAILED INFORMATION

Recent Work Done

- 2 BRAND NEW 30HP Volvo Engines due to EPA Recall - 0 Hrs
- Wax & Buff (May 2018)

Galley/Comfort Options

- Stove -(Eno)
- Oven - (Eno Le Porigod)
- Magma BBQ Grill
- Fridge (Isotherm)
- Freezer (Isotherm)
- Fans (4)
- Hot Water Heater (Isotherm 2012)
- Deck Shower (Hot & Cold)
- Sea Cork Decking
- LED Lighting in Hard Top Bimini

Electronics & Navigation

- Autopilot (Servo)
- Chartplotter (Raymarine)
- GPS (Raymarine)
- Radar with AIS (Raymarine)
- Depthsounder
- Knotmeter
- Compass
- Rudder Indicator
- Windex
- VHF
- Engine Instruments
- Fuel Gauge
- Navigation Lights

Electrical

- 110V - 30 AMP
- Solar Panels (Solbain 300 Watts - 2016)

- MPT Solar Charger
- 3 AGM Batteries (Oct 2016)
- Magnum Battery Charger
- 2000 Watt Inverter

Anchor/Winches/Hardware

- Primary Anchor - Ultra 21kg
- Secondary Anchor - Delta 21kg
- 300' of 3/8" Chain
- Electric Windlass with handheld controls
- 1 Electric Winch
- 2 Manual Winches

Water

- Spectra Watermaker - Newport 400 MK 112 12V 2016 (pickled 6/2018)
- Hot Water Heater
- Deck Shower (Hot & Cold)

Entertainment

- Alpine Stereo
- Alpine Speakers including Cockpit Speakers
- Wifi Extender
- Bluetooth
- Sirius Satellite (will need to subscribe)

Rigging & Sails

- Square Top Main (Factory)
- Roller Furling Genoa -Facnor LX (2016)
- Spinnaker - Symmetrical-Barracuda (2014)

Canvas/Cushions

- Canvas & Isinglass Helm Enclosure
- Cockpit Cushions

Dinghy

- Achilles 2013 Tender
- Honda 9.9 HP Outboard
- Dinghy Davits

Safety

- Liferaft - Valise
- Epirb

Manufacturer Provided Description

Fountaine Pajot yard is pleased to present you, the LIPARI 41, a reference all over the world. Built with the very latest technology, after 1 000 miles of rigorous sea trials, the LIPARI 41 joins the Fountaine Pajot range, the world reference in cruising catamarans: **Outside** : - Fine performances under sail and with two adapted engines. - Elegant lines with an integrated helm. - Excellent circulation: a deck free of all obstacles and a cockpit on the same level. - a cockpit and saloon with same level - an ergonomical helm free of obstacles for centralized manoeuvres. **A very nice and comfortable interior** : - A new interior design. - Cockpit and a saloon on the same level A - An ergonomical helm free of obstacles for centralized manoeuvres - Spacious and bright saloon. - Fine cabins well ventilated and private. - Spacious inside storage space. - A very pleasant owner bathroom

Exclusions

Owner's personal belongings.

Disclaimer

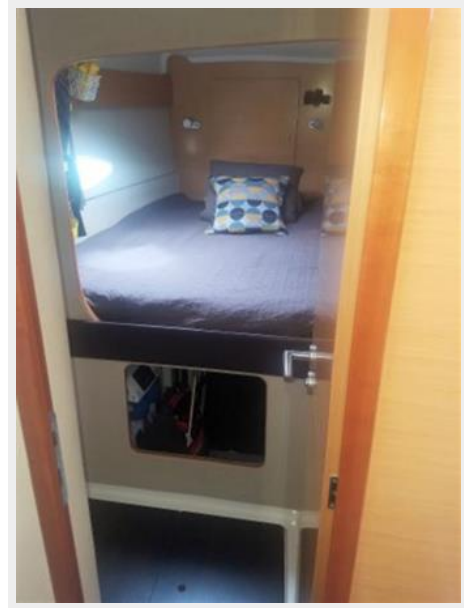
The Company offers the details of this vessel or yacht in good faith but cannot guarantee or warrant the accuracy of this information nor warrant the condition of the vessel. A buyer should instruct his representatives, agents, or his surveyors, to investigate such details as the buyer desires validated. This vessel or yacht is offered subject to prior sale, price change, or withdrawal without notice.

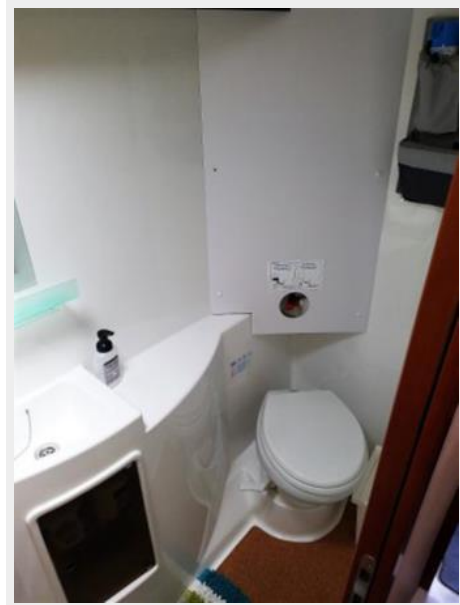
PHOTOS













CONTACTS

Andrey Shestakov, leading yacht broker of the sales department of Shestakov Yacht Sales Inc. Shestakov Yacht Sales Inc., the official representative of the Miami/Fort Lauderdale FL headquarters.

Contact details

Email: andrey@shestakovyachtsales.com

Web: shestakovyachtsales.com/en/

Telephones

USA: +1(954)274-4435

Office hours

Monday – Saturday: **9:00 - 21:00** EDT

Sunday: **closed**

Address



Harbour Towne Marina, 850 NE 3rd St,
STE 213, Dania, FL 33004