

IMAGINE — ISLAND PACKET YACHTS



Builder: ISLAND PACKET YACHTS

Year Built: 1997

Model: Catamaran

Price: PRICE ON APPLICATION

Location: United States

LOA: 35' 0" (10.67m)

Beam: 15' 0" (4.57m)

Max Draft: 2' 6" (0.76m)

Our experienced yacht broker, Andrey Shestakov, will help you choose and buy a yacht that best suits your needs **Imagine — ISLAND PACKET YACHTS** from our catalogue. Presently, at Shestakov Yacht Sales Inc., we have a wide variety of yachts available on our sale's list. We also work in close contact with all the big yacht manufacturers from all over the world.

If you would like to buy a yacht **Imagine — ISLAND PACKET YACHTS** or would like help answering any questions concerning purchasing, selling or chartering a yacht, please call **+1(954)274-4435**

TABLE OF CONTENTS

| | |
|-------------------------------|---|
| TABLE OF CONTENTS | 2 |
| SPECIFICATIONS | 4 |
| Overview | 4 |
| Basic Information | 4 |
| Dimensions | 4 |
| Speed, Capacities and Weight | 4 |
| Accommodations | 4 |
| Hull and Deck Information | 5 |
| Engine Information | 5 |
| PHOTOS | 6 |
| Packet Cat Drawing | 6 |
| Windlass | 6 |
| Ground Tackle | 6 |
| Harken Roller Furling Jib | 6 |
| Sparcraft Roller Furling Main | 7 |
| Solid Boom Vang | 7 |
| Radar Dome | 7 |
| Full Enclosure | 7 |
| Helm | 7 |
| AB Inflatable | 7 |
| Saloon Forward | 8 |
| Saloon Settee | 8 |
| Saloon Aft | 8 |
| Dinette | 8 |
| Navigation Station | 8 |
| Electrical Panel | 8 |
| Galley | 9 |
| Master | 9 |

| | |
|---------------------|-----------|
| Master Queen Berth | 9 |
| Master Head | 9 |
| Master Bath | 9 |
| Guest Cabin | 9 |
| Guest Cabin Storage | 10 |
| Guest Head | 10 |
| Storage Port | 10 |
| Storage Starboard | 10 |
| CONTACTS | 11 |
| Contact details | 11 |
| Telephones | 11 |
| Office hours | 11 |
| Address | 11 |

SPECIFICATIONS

Overview

THE BEST PACKET CAT ON THE MARKET! Complete with full electronics including autopilot, Chartplotter, radar, AWI, depth and speed. Roller furling main and jib. Soft top with full enclosure and integral davits. This is a long time knowledgeable-owner yacht, maintained in yacht condition with equipment for offshore cruising and island hopping with autonomy and security. She is for sale as owner's cruising plans are complete. Priced to sell!

Basic Information

Category: Catamaran

Sub Category: Cruising/Racing Sailboat

Model Year: 1997

Year Built: 1997

Country: United States

Dimensions

LOA: 35' 0" (10.67m)

LWL: 31' 0" (9.45m)

Beam: 15' 0" (4.57m)

Max Draft: 2' 6" (0.76m)

Speed, Capacities and Weight

Displacement: 11000 Pounds

Water Capacity: 140 Gallons

Holding Tank: 30 Gallons

Fuel Capacity: 55 Gallons

Accommodations

Total Cabins: 2

Total Heads: 2

Hull and Deck Information

Hull Material: Fiberglass

Hull Configuration: Catamaran

Engine Information

Engines: 2

Manufacturer: Yanmar

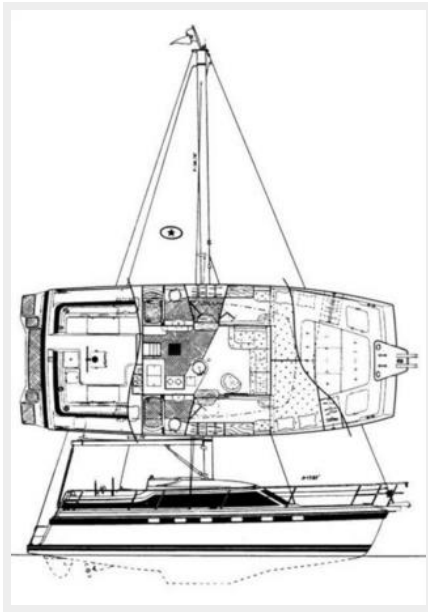
Model: 3GM30-F

Engine Type: Inboard

Fuel Type: Diesel

PHOTOS

Packet Cat Drawing



Windlass



Ground Tackle



Harken Roller Furling Jib



Sparcraft Roller Furling Main



Solid Boom Vang



Radar Dome



Full Enclosure



Helm



AB Inflatable



Saloon Forward



Saloon Settee



Saloon Aft



Dinette



Navigation Station



Electrical Panel



Galley



Master



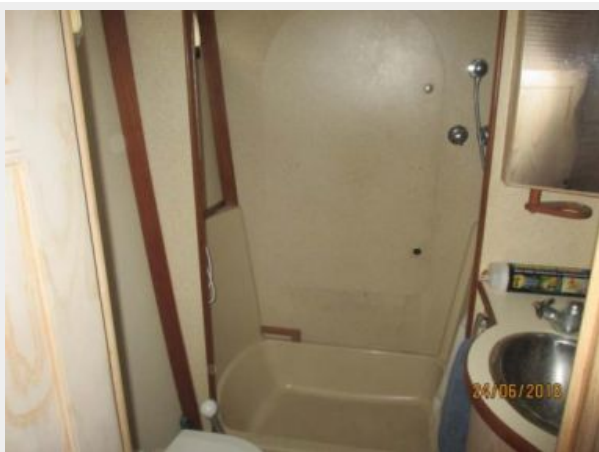
Master Queen Berth



Master Head



Master Bath



Guest Cabin



Guest Cabin Storage



Guest Head



Storage Port



Storage Starboard



CONTACTS

Andrey Shestakov, leading yacht broker of the sales department of Shestakov Yacht Sales Inc. Shestakov Yacht Sales Inc., the official representative of the Miami/Fort Lauderdale FL headquarters.

Contact details

Email: andrey@shestakovyachtsales.com

Web: shestakovyachtsales.com/en/

Telephones

USA: +1(954)274-4435

Office hours

Monday – Saturday: **9:00 - 21:00** EDT

Sunday: **closed**

Address



Harbour Towne Marina, 850 NE 3rd St,
STE 213, Dania, FL 33004