

SAVA — BAVARIA



Builder: BAVARIA

Year Built: 1999

Model: Sloop

Price: PRICE ON APPLICATION

Location: United States

LOA: 46' 0" (14.02m)

Beam: 14' 6" (4.42m)

Max Draft: 6' 7" (2.01m)

Our experienced yacht broker, Andrey Shestakov, will help you choose and buy a yacht that best suits your needs **SAVA — BAVARIA** from our catalogue. Presently, at Shestakov Yacht Sales Inc., we have a wide variety of yachts available on our sale's list. We also work in close contact with all the big yacht manufacturers from all over the world.

If you would like to buy a yacht **SAVA — BAVARIA** or would like help answering any questions concerning purchasing, selling or chartering a yacht, please call **+1(954)274-4435**

TABLE OF CONTENTS

TABLE OF CONTENTS	2
SPECIFICATIONS	4
Overview	4
Basic Information	5
Dimensions	5
Speed, Capacities and Weight	5
Accommodations	5
Hull and Deck Information	6
Engine Information	6
DETAILED INFORMATION	7
Recent Upgrades	7
Accommodations	7
Additional information	8
Exclusions	8
Disclaimer	8
PHOTOS	9
New Canvas, Solar, and Davits	9
Updated electronics	9
New Dodger	9
Looking Forward	9
Plan your next adventure - Perfect place to plan your next adventure!	10
Custom Zeno Mattress - Larger than a king size mattress	10
Dressing area just aft of V-berth	10
Saloon looking aft	10
Stbd aft berth	11
Huge cockpit lockers - Purpose built to store the companionway boards	11
Aft electric head with stall shower	11
Port cockpit locker	11

4 person life raft	11
Lots of ventilation	12
Mast pulpit for safety	12
Wide side decks	12
Large Deck storage locker	12
Massive ground tackle	12
Main engine	13
Main engine stbd side	13
CONTACTS	14
Contact details	14
Telephones	14
Office hours	14
Address	14

SPECIFICATIONS

Overview

SAVA is a 1999 Bavaria 46. With new equipment and a well-documented history, she is ready to go cruising once again.

Three stateroom layout with two heads and stall shower.

Volvo Penta 78HP engine with engine oil analysis report completed December 2017 available. Rigging and hull survey completed December 2017.

After a year of upgrading and cruising the owners are moving up. That means this meticulously maintained blue water cruiser is available for immediate sale!

Priced to sell and very well equipped she will take you safely anywhere your dreams take you.

- New holding tank installed 2015
- 60amp Xantrex battery charger 2017
- Balmar 120 amp high output alternator with smart regulator 2016
- Force 10 two burner with oven and broiler 2016
- Raymarine AP course computer 2017
- New 120v AC electrical panel 2017
- VHF Raymarine new 2017
- New Garmin GMI20 multi displays 2017
- New Garmin 840XS chartplotter 2017
- New Garmin 18 HD+ radar 2017
- New Garmin wind speed and wind direction 2017
- New Garmin boat speed and sea temperature 2017
- New Garmin depth sounder 2017
- New Sony stereo system 2017
- New Garmin AIS 2018
- Bottom paint June 2017
- New Revere life raft 2018
- New Zeno mattress for owner's cabin 2018
- Water maker serviced December 2017
- New Solar panels 2017
- New epic solar controller 2017
- New 85lb Mantus anchor 2018
- New Mantus anchor swivel 2018
- 100 meters 3/8 stainless anchor chain
- Lofrains windless with remote
- Iridium Go satellite phone and Wi-Fi 2018
- Atlantic towers aluminum arch with dinghy davits, solar panels 2018

- New cockpit cushions 2017
- New Bimini and side curtains 2017
- New lazy jacks and sail bag cover 2017
- 10 New low voltage variable speed fans
- All lighting replaced with LED
- New Anchor and tri color light 2017

Basic Information

Category: Sloop

Sub Category: Cruising/Racing Sailboat

Model Year: 1999

Year Built: 1999

Country: United States

Dimensions

LOA: 46' 0" (14.02m)

LWL: 46' 6" (14.17m)

LOD: 48' 0" (14.63m)

Beam: 14' 6" (4.42m)

Max Draft: 6' 7" (2.01m)

Clearance: 67' 0" (20.42m)

Speed, Capacities and Weight

Water Capacity: 140 Gallons

Holding Tank: 20 Gallons

Fuel Capacity: 65 Gallons

Accommodations

Total Cabins: 3

Total Berths: 3

Total Heads: 2

Hull and Deck Information

Hull Material: Fiberglass

Engine Information

Engines: 1

Manufacturer: Volvo

Model: TMD 22

Engine Type: Inboard

Fuel Type: Diesel

DETAILED INFORMATION

Recent Upgrades

- New holding tank installed 2015
- 60amp Xantrex battery charger 2017
- Balmar 120 amp high output alternator with smart regulator 2016
- Force 10 two burner with oven and broiler 2016
- Raymarine AP course computer 2017
- New 120v AC electrical panel 2017
- VHF Raymarine new 2017
- New Garmin GMI20 multi displays 2017
- New Garmin 840XS chartplotter 2017
- New Garmin 18 HD+ radar 2017
- New Garmin wind speed and wind direction 2017
- New Garmin boat speed and sea temperature 2017
- New Garmin depth sounder 2017
- New Sony stereo system 2017
- New Garmin AIS 2018
- Bottom paint June 2017
- New Revere life raft 2018
- New Zeno mattress for owner's cabin 2018
- Water maker serviced December 2017
- New Solar panels 2017
- New epic solar controller 2017
- New 85lb Mantus anchor 2018
- New Mantus anchor swivel 2018
- 100 meters 3/8 stainless anchor chain
- Lofrains windless with remote
- Iridium Go satellite phone and Wi-Fi 2018
- Atlantic towers aluminum arch with dinghy davits, solar panels 2018
- New cockpit cushions 2017
- New Bimini and side curtains 2017
- New lazy jacks and sail bag cover 2017
- 10 New low voltage variable speed fans
- All lighting replaced with LED
- New Anchor and tri color light 2017

Accommodations

SAVA is a 3 cabin layout with 2 aft cabins and a large (larger than a king) v-berth with a custom Zeno mattress.

All cabins have a large amount of storage with hanging lockers and shelves.

There are fans throughout the salon and cabin for comfort as well.

There are two heads serving the three cabins. The aft head is to port and is electric with it's own dedicated stall shower. The forward head is manual and has a pullout sink/shower and separate dressing area.

Additional information

SAVA is an exceptional blue water cruising boat that lacks nothing to be ready for offshore cruising.

Features like an engine driven water maker, 400 watts of solar and Iridium Sat Phone will keep you comfortable and in touch while at sea.

A 2kW inverter means you don't have to give up comfort while cruising either.

Her current owners have inspected and upgraded or replaced any system that needed it in the last 12 months so you are getting many items with little wear.

This boat is a must for anyone looking for a true blue-water vessel without having to break the bank to get it!

Exclusions

Owner's personal belongings.

Disclaimer

The Company offers the details of this vessel or yacht in good faith but cannot guarantee or warrant the accuracy of this information nor warrant the condition of the vessel. A buyer should instruct his representatives, agents, or his surveyors, to investigate such details as the buyer desires validated. This vessel or yacht is offered subject to prior sale, price change, or withdrawal without notice.

PHOTOS

New Canvas, Solar, and Davits



Updated electronics



New Dodger



Looking Forward



Plan your next adventure - Perfect place to plan your next adventure!



Custom Zeno Mattress - Larger than a king size mattress



Dressing area just aft of V-berth



Saloon looking aft



Stbd aft berth



Aft electric head with stall shower



Huge cockpit lockers - Purpose built to store the companionway boards



Port cockpit locker



4 person life raft



Lots of ventilation



Mast pulpit for safety



Wide side decks



Large Deck storage locker



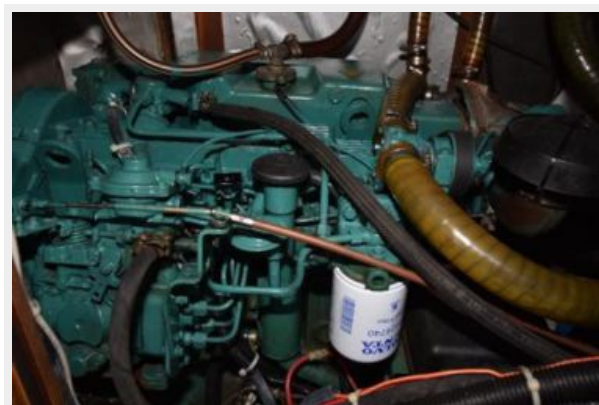
Massive ground tackle



Main engine



Main engine stbd side



CONTACTS

Andrey Shestakov, leading yacht broker of the sales department of Shestakov Yacht Sales Inc. Shestakov Yacht Sales Inc., the official representative of the Miami/Fort Lauderdale FL headquarters.

Contact details

Email: andrey@shestakovyachtsales.com

Web: shestakovyachtsales.com/en/

Telephones

USA: +1(954)274-4435

Office hours

Monday – Saturday: **9:00 - 21:00** EDT

Sunday: **closed**

Address



Harbour Towne Marina, 850 NE 3rd St,
STE 213, Dania, FL 33004