

ACREWED BENEFITS — TARTAN YACHTS



Builder: TARTAN YACHTS

Year Built: 1980

Model: Sloop

Price: PRICE ON APPLICATION

Location: United States

LOA: 32' 10" (10.01m)

Beam: 10' 1" (3.07m)

Max Draft: 4' 6" (1.37m)

Our experienced yacht broker, Andrey Shestakov, will help you choose and buy a yacht that best suits your needs **Acrewed Benefits — TARTAN YACHTS** from our catalogue. Presently, at Shestakov Yacht Sales Inc., we have a wide variety of yachts available on our sale's list. We also work in close contact with all the big yacht manufacturers from all over the world.

If you would like to buy a yacht **Acrewed Benefits — TARTAN YACHTS** or would like help answering any questions concerning purchasing, selling or chartering a yacht, please call **+1(954)274-4435**

TABLE OF CONTENTS

TABLE OF CONTENTS	2
SPECIFICATIONS	3
Overview	3
Basic Information	3
Dimensions	3
Speed, Capacities and Weight	3
Accommodations	4
Hull and Deck Information	4
Engine Information	4
PHOTOS	5
CONTACTS	9
Contact details	9
Telephones	9
Office hours	9
Address	9

SPECIFICATIONS

Overview

Acrewed Benefit is a sloop designed by Sparkman & Stephens and built to the high quality you would expect from Tartan. First offered in 1979, this design continued through 1984. She has standing headroom throughout her teak trimmed cabin. To port she has a settee berth and a pilot berth. To starboard there's another settee with storage shelves and with the quarter berth and double forepeak berth, she'll sleep at least 6. There is a seat with backrest situated at the opening of the quarter berth and a large chart table folds down when needed and then out of the way when not. The galley is to starboard of the companionway and the head is private on the port side between the forepeak and the main salon, but does not impede access to the forward cabin. A hanging locker is opposite. A table in the main salon folds out of the way onto the bulkhead when not needed. Below the water she has a fin keel and spade rudder. On deck she has 8 opening ports, 2 deck hatches, teak handrails, Lifelines, ladder and wheel steering.

Basic Information

Category: Sloop

Sub Category: Cruising Sailboat

Model Year: 1980

Year Built: 1980

Country: United States

Dimensions

LOA: 32' 10" (10.01m)

Beam: 10' 1" (3.07m)

Max Draft: 4' 6" (1.37m)

Speed, Capacities and Weight

Displacement: 10000 Pounds

Water Capacity: 45 Gallons

Holding Tank: 15 Gallons

Fuel Capacity: 24 Gallons

Accommodations

Total Cabins: 1

Total Heads: 1

Hull and Deck Information

Hull Material: Fiberglass

Engine Information

Engines: 1

Manufacturer: Universal

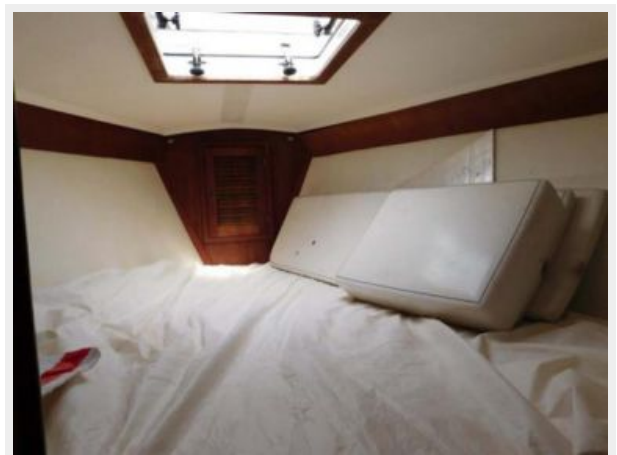
Model: M24

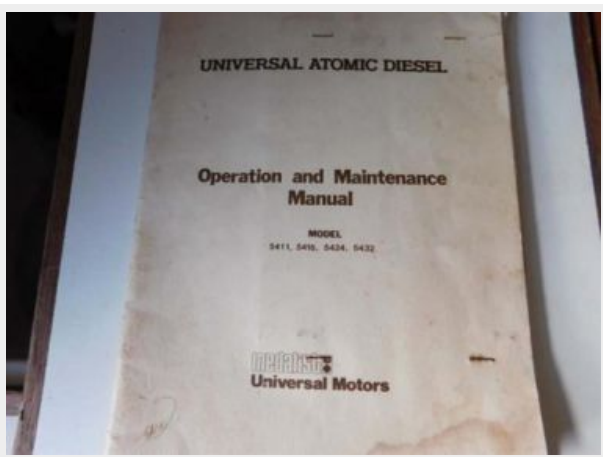
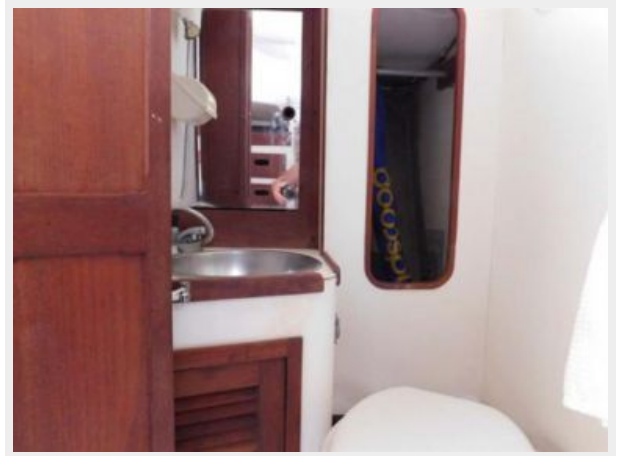
Fuel Type: Diesel

PHOTOS









CONTACTS

Andrey Shestakov, leading yacht broker of the sales department of Shestakov Yacht Sales Inc. Shestakov Yacht Sales Inc., the official representative of the Miami/Fort Lauderdale FL headquarters.

Contact details

Email: andrey@shestakovyachtsales.com

Web: shestakovyachtsales.com/en/

Telephones

USA: +1(954)274-4435

Office hours

Monday – Saturday: **9:00 - 21:00** EDT

Sunday: **closed**

Address



Harbour Towne Marina, 850 NE 3rd St,
STE 213, Dania, FL 33004