

AUGUST DAY — CATALINA



Судостроитель: CATALINA

Год постройки: 1996

Модель: Sloop

Цена: ЦЕНА ЯХТЫ ПО ЗАПРОСУ

Местонахождение: United States

Длина общая: 28' 0" (8.53m)

Ширина: 10' 4" (3.15m)

Макс. осадка: 3' 9" (1.14m)

Купить **August Day — CATALINA** а также выбрать подходящую вам яхту из нашего каталога яхт вам поможет опытный яхтенный брокер Андрей Шестаков. На сегодняшний день компания **Shestakov Yacht Sales Inc.** имеет большое количество яхт в собственном списке продаж, а также тесно сотрудничает со всеми крупными яхтенными производителями по всему миру.

Для того чтобы купить яхту **August Day — CATALINA** а также проконсультироваться по любому вопросу связанному с покупкой, продажей, чартером яхт позвоните по телефону **+7(918)465-66-44**.

ОГЛАВЛЕНИЕ

ОГЛАВЛЕНИЕ	2
ХАРАКТЕРИСТИКИ	4
Обзор	4
Основная информация	4
Размеры	4
Скорость, вместимость и масса	4
Размещение	4
Корпус и палуба	5
Информация о двигателе	5
ПОДРОБНОЕ ОПИСАНИЕ	6
Upgrades	6
Walkthrough	6
Salon	7
Accommodations	8
Galley	8
Head	9
Cockpit	9
Helm	9
Rig	10
Sails & Canvas	10
Deck and Hull	10
Mechanical & Electrical	11
Safety	11
Disclaimer	11
Исключения	12
Отказ от ответственности	12
ФОТОГРАФИИ	13
КОНТАКТЫ	26

Контактная информация	26
Телефоны	26
Время работы	26
Адрес	26

ХАРАКТЕРИСТИКИ

Обзор

Introduced in 1995, the Catalina 28 MKII is a versatile family cruiser with the features and feel of a larger 30'+ boat. "August Day" offers a well thought out deck plan with all lines leading back to the spacious, comfortable cockpit that Catalina is famous for. The very roomy interior sleeps up to 6 and includes a full galley and head. "August Day" is in exceptional, sail ready, condition and shows like a boat 10 years her junior. She is easily among the best examples of her class on the market today.

Основная информация

Тип судна: Sloop

Подкатегория: Sloop

Модельный год: 1996

Год постройки: 1996

Страна: United States

Кубрик: Да

Размеры

Длина общая: 28' 0" (8.53m)

Длина по ватерлинии: 23' 0" (7.01m)

Ширина: 10' 4" (3.15m)

Макс. осадка: 3' 9" (1.14m)

Скорость, вместимость и масса

Водоизмещение: 8600 Pounds

Вместимость воды: 49 Gallons

Вместимость сточного бака: 17 Gallons

Объем топливного бака: 19 Gallons

Размещение

Всего кают: 2

Всего коек: 4

Спальные места: 6

Всего ком. состава: 1

Корпус и палуба

Материал корпуса: Fiberglass

Цвет корпуса: White

Информация о двигателе

Производитель: Universal

ПОДРОБНОЕ ОПИСАНИЕ

Upgrades

- Fuel tank replaced - 2013
- Main Sail & Genoa - New 2013
- Raymarine depth instrument & transducer replaced
- Stereo System replaced
- VHF Radio replaced
- Battery Charger replaced

Walkthrough

COCKPIT: The roomy cockpit with seating for at 7 features an Edson helm with a stainless steel wheel, binnacle with a Danforth compass, engine throttle and gear shift port & starboard. An instrument pod is mounted above containing Raymarine depth/speed instrument, KVH Quadro control unit (non-functional), ST4000 auto-helm control unit. (note: knot meter is non-functional/disconnected, boat transfers with a uninstalled Raymarine transducer) The engine gauges are mounted below. The engine kill lever is located on the cockpit wall to port. T-shaped seating for 7 is provided by port, starboard and stern benches, with cushions. The coamings are wide and angled for comfortable seating when under heal. The walk through stern features a small swim/boarding platform integrated into the hull, with a extra wide swim ladder, that when folded up, integrates into the stern rail. A cockpit shower is found on the port side of the walkthrough section. A removable seat section is provided to close off the walk through to create a full bench seat across the stern. Port and starboard corner seats are integrated into the stern rail and which also has an outboard engine mount on the starboard side. Two lazarette storage lockers are found under the stern seats, port and starboard. Additional storage is provided by a locker under the port side bench seat. Two open faced storage pockets are integrated into the port and starboard coamings, with hinged lids. The LPG gas compartment is integrated into port coaming. Two cockpit speakers are found mounted port and starboard on the bench seating, which also have two stern facing opening ports, port and starboard. Two Lewmar 30 self tailing winches are mounted port and starboard for jib trim, with two Lewmar 16 self tailing winch mounted on the cabin top port & starboard for halyard and main sheet trim. All running rigging lines lead aft to the cockpit. Wind instrumentation is mounted on the port bulkhead. A teak fold down cockpit table (uninstalled - not shown in photos) transfers with the boat. The cockpit is protected from the sun and sea by a Full Cockpit Bimini top. TOPSIDES: Moving forward the deck is protected by stainless steel stern and bow railings connected by dual lifelines running the length of the deck port and starboard; gates are found at the stern. Stainless steel hand rails run along the cabin top, port and starboard. An anchor locker is found at the bow along with a bow mounted bruce anchor. A Maxwell electric windless is mounted in the anchor locker. The double spreader rig features Schaefer roller furler, a boom vang and main sail Dutchman self flaking system system. The standing rigging is stainless wire cable, with the shrouds mounted inboard allowing easy

passage fore and aft. Cleats are found at the bow, midships and at the stern. MAIN CABIN: Entering the main cabin the galley is found to starboard and the head to port. Port and starboard settees with seating for six extend fore and aft along the length of the salon. Shelves run along the port and starboard sides above the settees. A double sided fold down table is mounted along the centerline. There are two overhead lights and two additional lights mounted under the port and starboard decks. Ventilation is provided by two overhead opening hatches and two side mounted opening ports, forward port and starboard. Four fixed port/windows with curtains run along the side of the cabin port and starboard. Two fans and two stereo speakers are mounted on the forward bulkhead, port & starboard, with a ships bell to starboard. GALLEY: The cleverly designed full galley features a stainless steel sink with hot and cold running water, a Hillerange oven/stove, an icebox, integrated counter top trash and storage bins, three under counter drawers and a under counter locker. Additional storage is provided by a locker with sliding doors above. NAV STATION: A large top loading refrigerator is found forward of the head on the port side. The top creates a standing navigation station table. Above is the electrical panel, VHF radio, stereo radio, GPS (non-functional), light and 12 VAC outlet. HEAD: The head/shower combo features a manual marine toilet, sink w/hot & cold running water, shower curtain, cabinet, mirror, towel rack and grab rail. FORWARD CABIN: The forward cabin features a V-Berth bunk for 2. There is a shelf mounted forward. Under bunk storage and hammock storage, port and starboard. There are two overhead lights and two bulkhead mounted fans. A large opening hatch is found overhead. AFT BERTH: The aft berth located aft of the galley under the cockpit sole. It features a double berth, two opening ports, two lights a fan and a privacy curtain. A small shelf is found on the aft bulkhead and a locker is located next the to berth by the galley. ENGINE COMPARTMENT: The engine compartment is found under the companionway stairs. The stair module can be completely removed for very easy engine access.

Salon

- Port Settee; seats 3; converts to a single bunk
- Starboard Settee; seats 3; converts to a single bunk
- Centerline double side fold down wood table
- Electrical control pannel; aft port side
- Navigation pannel; aft port side
- Open shelves running port & starboard side
- 2 Opening ports; 1 port, 1 starboard
- 6 Fixed ports; 3 port, 3 starboard
- 2 Overhead opening hatches, forward port & starboard
- 4 Overhead lights; 12 VDC
- 2 Hella Turbo fans; 12 VDC; forward bulkhead mounted, port & starboard
- 2 MTX stereo speakers; forward bulkhead mounted, port & starboard
- 2 120 VAC Outlets
- 1 12 VAC Outlet
- 1 Ships bell; forward bulkhead mounted, starboard
- Wood slat paneling

- Curtains

Accommodations

FORWARD CABIN:

- Private cabin with accordion door located in bow
- V-berth w/Insert (sleeps 2)
- V-berth step
- 2 Under berth storage lockers; port & starboard
- 1 Shelf; forward
- 2 Storage hammocks; port & starboard
- 2 Hella turbo fans; 12 VDC; aft bulkhead mounted, port & starboard
- 2 Overhead mounted lights; 12 VAC, port & starboard
- 1 Opening center overhead hatch
-

AFT BERTH:

- Open berth with privacy curtain located aft of galley extending under cockpit sole
- Queen berth sleeps 2
- 2 opening ports
- 1 light; 12 VAC; aft bulkhead mounted, port side
- 1 light; 12 VAC; overhead mounted, starboard side
- 1 Hella turbo fan; 12 VDC; starboard mounted
- 1 Shelf; aft starboard side
- 1 Locker; forward starboard side

SALON SETTEES:

- 2 Berths; salon settee's convert to single bunks, port & starboard

Galley

- Located in salon; aft port side
- Central SeaWard Hillerange 2-Burner Stove w/Oven - LPG
- Stainless Steel Sink w/Hot & Cold Running Water; left of stove
- Top loading ice box; forward of sink, left of stove
- Top loading refrigerator; located opposite on port side
- 3 Drawers; under sink left of stove
- 1 Locker, left of sink
- 4 Cup holders, forward of ice box, left of stove
- 3 In-counter storage bins; behind stove

- Above counter storage cabinet
- In counter trash bin right of stove
- Towel Rack, right of stove
- Counter top covers for sink stove, ice box & trash bin
- 1 120 VAC outlet

Head

- Jabsco Manual Marine Head, left side
- Sink w/Hot & Cold Running Water, with spigot that doubles as a shower head, right side
- Above counter locker with mirrored sliding doors, along port hull
- 1 overhead mounted light, 12VDC
- Towel rack
- Grab rail
- Shower curtain
- 110 VAC Electrical Outlet, forward bulkhead hull side
- 1 fixed port

Cockpit

- Bench seating for 4 passengers; port & starboard
- Aft seating for 3 passengers
- 2 Stern rail seats; port & starboard
- Cockpit cushions
- Teak fold down cockpit table (uninstalled - not shown in photos)
- Wide coamings, angled for comfortable seating under heel; port & starboard
- Helm
- 2 Outdoor stereo speakers
- Full Cockpit Bimini Top
- Walkthrough transom, with seat insert
- Swim platform
- Extra wide swim ladder
- Shower; transom walkthrough port side
- 2 Gunnel pocket compartments with lift tops; port and starboard
- 2 Transom lockers, port & starboard
- 1 Storage locker under port bench seat
- LPG tank compartment; aft port side
- Whale manual bilge pump, port side
- Companionway to salon; center forward

Helm

Edson Pedestal Helm with:

- Stainless steel wheel
- Danforth constellation binnacle compass
- Gear shift; port side
- Throttle; starboard side
- Instrument pod with Raymarine depth/speed instrument, KVH Quadro control unit (non-functional), ST4000 auto-helm control unit (note: knot meter is non-functional/disconnected, boat transfers with a uninstalled Raymarine transducer.
- Engine instrument pod with RPM, voltage, fuel & temperature gauges, starting controls; kill pull found to port next to the manual bilge pump

Rig

- Masthead sloop rig
- Aluminum double spreader mast with fore & aft lower shrouds
- Aluminum boom
- Stainless steel wire standing rigging
- Inboard shrouds, allow easy passage fore & aft
- Schaefer roller furler
- All running rigging leads aft to cockpit
- Traveler mounted forward of companionway
- Single line reefing system
- Mainsail Dutchman self flaking system
- Boom vang
- Forespar twist lock whisker pole
- Mast head wind indicator

Sails & Canvas

- Mainsail; new in 2013
- Genoa; new in 2013
- Full cockpit Bimini
- Full sun cover for topside
- Sail & Bimini cover

Deck and Hull

- Solid laminate fiberglass composite hull
- shoebox fashion hull to deck joint with mechanical easterners and external aluminum rub

rail with vinyl insert

- Shallow draft wing keel
- 3 Blade propeller
- 10 KG Bruce anchor; bow mounted
- 200' anchor rode w/chain
- 2 Lewmar 16 self tailing winch
- 2 Lewmar 30 self tailing winches
- 6 Cleats; 2 at bow, 2 amidships, 2 at stern
- Stainless steel bow pulpit and stern rail, connected by double life lines with port & starboard gates aft at cockpit
- Outboard engine mount on stern rail starboard side
- Navigation, running & anchor lights

Mechanical & Electrical

- Universal Diesel engine, model M25XPAC, 3 cylinder, 23 HP
- Parker R24S fuel filter/water separator
- Maxwell 500 electric windless
- SurfFlow 2088-423-244 3.8 GPM house water pump
- RULE 1500 GPH bilge pump with automatic float switch
- ITT Jabsco 81590 macerator pump
- Seaward hot water heater (6 Gallons)
- Charles Marine 5000 SP series electronic battery charger with battery type selector
- 2 Autocraft 24DC-1 deep cycle marine batteries
- House electric panel
- 12 VAC electrical system
- 120 VAC electrical system

Safety

- 2 Kidde 1-A, 10-B:C dry chemical fire extinguishers
- 4 Flares; expired
- 1 Hand held air horn
- 2 Near shore buoyant vest type II pfd's
- 1 LPG solenoid valve

Disclaimer

The company offers the details of this vessel in good faith but cannot guarantee or warrant the accuracy of this information nor warrant the condition of the vessel. A buyer should instruct his agents, or his surveyors, to investigate such details as the buyer desires validated. This vessel is

offered subject to prior sale, price change, or withdrawal without notice.

Исключения

При продаже яхты исключаются личные вещи владельца.

Отказ от ответственности

Компания предоставляет описание судна или яхты добросовестно, но не может гарантировать точность этой информации, а также не ручается за техническое состояние. Покупатель должен проинструктировать своих агентов или оценщиков исследовать представленную информацию более подробно, по собственному желанию. Продажа судна или яхты, изменение цены или снятие с продажи будет происходить без предварительного уведомления.

ФОТОГРАФИИ











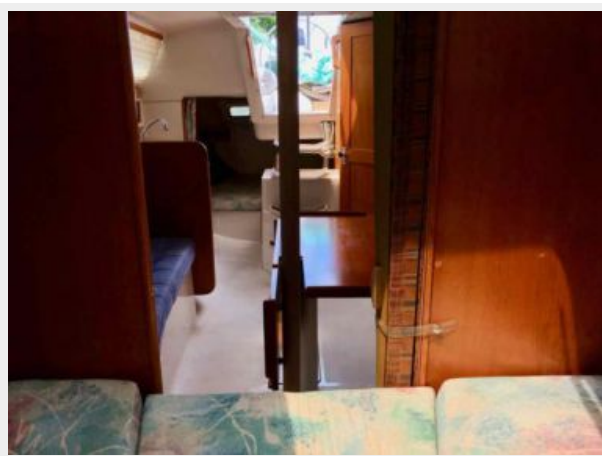
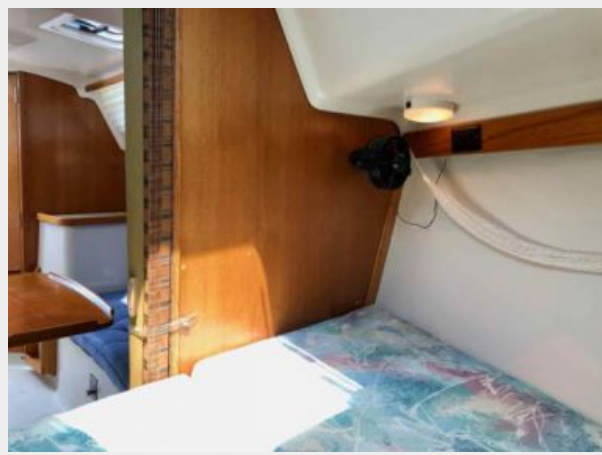
















КОНТАКТЫ

Андрей Шестаков (Andrey Shestakov) – ведущий яхтенный брокер отдела продаж яхт и судов компании Shestakov Yacht Sales Inc. Официальный представитель Shestakov Yacht Sales Inc. для русскоговорящих клиентов в центральном офисе компании в Майами/Форт Лодердейл/Флорида/США.

Контактная информация

Email: andrey@shestakovyachtsales.com

Web: shestakovyachtsales.com

Телефоны

Краснодарский край: **+7(918)465-66-44**

США, Майами, Флорида: **+1(954)274-4435**

Время работы

Понедельник – Суббота: **9:00 - 21:00**
EDT

Воскресенье: **Закрето**

Адрес



Harbour Towne Marina, 850 NE 3rd St,
STE 213, Dania, FL 33004