

## OKS — AZIMUT



**Builder:** AZIMUT

**Year Built:** 2016

**Model:** Motor Yacht

**Price:** PRICE ON APPLICATION

**Location:** Thailand

**LOA:** 82' 8" (25.20m)

**Beam:** 20' 3" (6.17m)

**Max Draft:** 5' 8" (1.73m)

**Cruise Speed:** 24 Kts. (28 MPH)

**Max Speed:** 28 Kts. (32 MPH)

Our experienced yacht broker, Andrey Shestakov, will help you choose and buy a yacht that best suits your needs **OKS — AZIMUT** from our catalogue. Presently, at Shestakov Yacht Sales Inc., we have a wide variety of yachts available on our sale's list. We also work in close contact with all the big yacht manufacturers from all over the world.

If you would like to buy a yacht **OKS — AZIMUT** or would like help answering any questions concerning purchasing, selling or chartering a yacht, please call **+1(954)274-4435**

---

# TABLE OF CONTENTS

---

TABLE OF CONTENTS	2
SPECIFICATIONS	3
Overview	3
Basic Information	3
Dimensions	4
Speed, Capacities and Weight	4
Accommodations	4
Hull and Deck Information	4
DETAILED INFORMATION	5
General	5
Galley	5
Mechanical	5
Electrical Equipment	5
Accommodations	5
Accessories	6
Water	6
Safety & Fire Protection	6
Exclusions	6
Disclaimer	6
PHOTOS	7
CONTACTS	12
Contact details	12
Telephones	12
Office hours	12
Address	12

---

# SPECIFICATIONS

---

## Overview

---

New to the market, this highly optioned Azimut 80 will please a buyer looking for a great sized family yacht that is simple to maintain and can be run with minimum crew. Her upgraded MAN 1550hp shaft drive engines are easily controlled with the joystick control with the help of the bow and stern thrusters making close quarter maneuvering a breeze. Fin stabilization ensures everyone on board is comfortable and the massive external social areas leaves the guest spoiled for choice as to where to relax. She has a hydraulic swim platform holding a Williams 325 jet tender for getting around. This particular model is the open galley version with a blind that can be lowered for more enclosed feeling. The adjacent day head on the main deck is super handy and on the lower decks she has the VIP fwd and further double to port and a twin to starboard that comes with a pullman so she sleeps up to nine guests. The full beam master is huge with a walk in wardrobe, small dinette and lounge chairs under the port large hull window. The large ensuite runs laterally with large rain shower and jacuzzi bath tub. Very well maintained and managed by Lee Marine we are excited to offer her to our clients and expect her to create serious interest.

- # Four cabin layout with full beam master
- # Fin stabilization for added comfort
- # Hydraulic swim platform with Williams jet tender
- # Hardtop on the large open flybridge
- # Bow lounge and seating with table
- # Open galley for social entertaining
- # Metallic painted hull

---

## Basic Information

---

**Category:** Motor Yacht

**Model Year:** 2016

**Year Built:** 2016

**Country:** Thailand

**Fly Bridge:** Yes

---

## Dimensions

---

**LOA:** 82' 8" (25.20m)

**Beam:** 20' 3" (6.17m)

**Max Draft:** 5' 8" (1.73m)

---

## Speed, Capacities and Weight

---

**Cruise Speed:** 24 Kts. (28 MPH)

**Max Speed:** 28 Kts. (32 MPH)

**Gross Tonnage:** 64 Pounds

**Water Capacity:** 1100 Gallons

**Fuel Capacity:** 6000 Gallons

---

## Accommodations

---

**Total Cabins:** 4

**Total Berths:** 4

**Sleeps:** 8

**Total Heads:** 5

**Crew Berths:** 2

**Crew Sleeps:** 3

**Crew Heads:** 2

---

## Hull and Deck Information

---

**Hull Material:** GRP

**Exterior Designer:** Stefano Righini

**Interior Designer:** Salvagni Architetti

---

# DETAILED INFORMATION

---

## General

---

Year: 2016 Type: Power Designer: Stefano Righini Model: Azimut 80 Engine Make: 2 x MAN CR V12 Shaft line Material: GRP Displacement: 64 Tonnes LyingTown: Phuket, Thailand Length: 82.8 Ft Beam: 20.3 Ft Draft: 5.8 Ft Total Berths: 9+2 Max Speed: 28 Knots Cruise Speed: 24 Knots Cabins: 4 Hull Number: IT-AZ180033B616 Last Slipped: March 2018 Deck Material: GRP Interior Finish: Black lacquer Registration: Cook Islands Keel Type: V shape with angle of deadrise 16,6 aft

## Galley

---

Location: FWD main deck Stove: Miele 4 stove hob 220V Sink: 1 x stainless steel Refrigeration: 2 x Vitrifrigo and 1 on flybridge Microwave: Miele Ice Maker: 2 (cockpit and flybridge)

## Mechanical

---

Engine Year: 2016 Engine Model: 2 x MAN V12 28EFOZD Engine No.: 71042748044268 and 71042748104268 Engine HP: 2 x 1550 Engine Hours: Port 971, STBD 966 (July 2018) Genset Model: 2 x Kohler Controls: Electronic Genset Hours Date: July 2018 Genset Hours: 1275, 1251 Fuel Filter: Racor 2020 Fuel Capacity: 6000 ltrs Propellers: 5 blades Gear Box: ZF 2000 series Trim Tabs: Yes Air Conditioning: Condaria tropical

## Electrical Equipment

---

Depth Sounder: Raymarine gs series 165 Log Speed: Raymarine gs series 165 Radar: Raymarine gs series 165 Radios: Raymarine 260E Autopilot: Raymarine gs series 165 Chart Plotter: Raymarine gs series 165 GPS: Raymarine gs series 165 Shore Power: 220 V Stereo: BOSE Battery House Age: 2017 (1 year) Battery House: 6 x Bosch Battery Engine Age: 2016 (2 years) Battery Engine: 6 x Uranio Battery Charger: 2 x Mastervolt 24/30-3 Battery Other: 2 x Genset DR900 Electrical Notes: TV Samsung 48 inches insaloon, Samsung 32 inches smart TV in master cabin, Samsung 21 inches smart TV in guest port and starboard cabin, Samsung 32 inches forward guest cabin. Raymarine CCTV.

## Accommodations

---

Double Berth: 3 Single Berth: 1 Heads Number: 4+1 day head Additional Cabins: 2 crews cabin+ 1 crew head Showers: 4 Heads Type: Vacuum flush electric

---

## Accessories

---

Tenders: Williams turbo jet 385 100-120 hp Davits Crane: Wire for future installation Deck Wash: Fresh on bow Swim Platform: Hydraulic swim platform BBQ: Kenyon on flybridge 220 V Passarelle: Bezenzoni Sunpad: Sunpad with seating and table

---

## Water

---

Number Tanks: 1 Water Capacity: 1100 ltrs Water Maker: Seafari mini 750 Holding Tank: 2 Holding Tank Cap.: Black tank 900 ltrs and grey tank 900 ltrs Washing Machine: Miele Heater: Hot water system

---

## Safety & Fire Protection

---

Life Jacket: 20 Bilge Manual: 1+1 emergency Fire Exting.: 9 + auto in engine room Windlass: Quick Bilge Electric: 3 Anchors: 80 kgs Chain: 80 m Search Light: Jarsco with remote

---

## Exclusions

---

Owner's personal belongings.

---

## Disclaimer

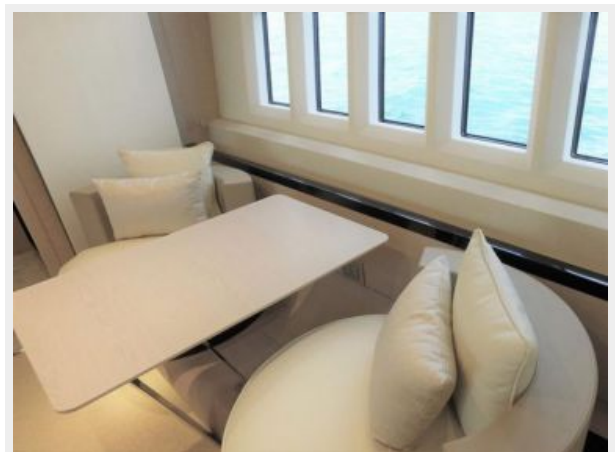
---

The Company offers the details of this vessel or yacht in good faith but cannot guarantee or warrant the accuracy of this information nor warrant the condition of the vessel. A buyer should instruct his representatives, agents, or his surveyors, to investigate such details as the buyer desires validated. This vessel or yacht is offered subject to prior sale, price change, or withdrawal without notice.

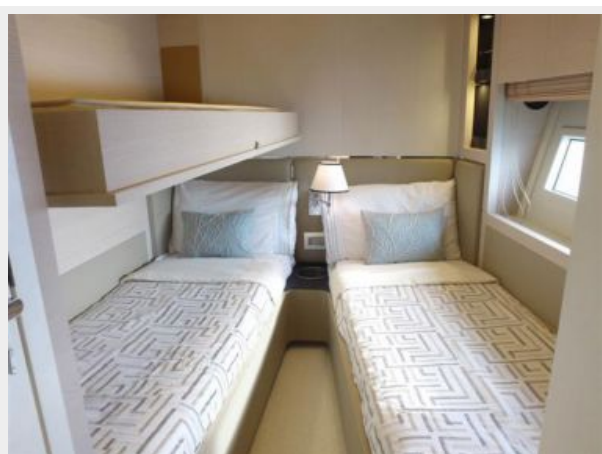
# PHOTOS



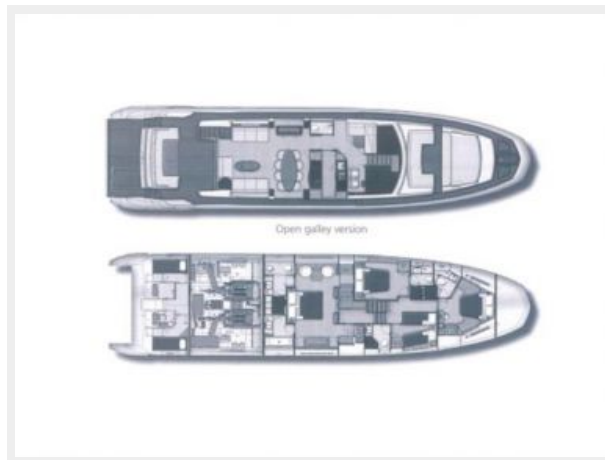














# CONTACTS

---

Andrey Shestakov, leading yacht broker of the sales department of Shestakov Yacht Sales Inc. Shestakov Yacht Sales Inc., the official representative of the Miami/Fort Lauderdale FL headquarters.

## Contact details

---

Email: [andrey@shestakovyachtsales.com](mailto:andrey@shestakovyachtsales.com)

Web: [shestakovyachtsales.com/en/](http://shestakovyachtsales.com/en/)

## Telephones

---

USA: +1(954)274-4435

## Office hours

---

Monday – Saturday: **9:00 - 21:00** EDT

Sunday: **closed**

## Address

---



Harbour Towne Marina, 850 NE 3rd St,  
STE 213, Dania, FL 33004