

ORION — BENETEAU



Builder: BENETEAU

Year Built: 1993

Model: Cruising Sailboat

Price: PRICE ON APPLICATION

Location: United States

LOA: 44' 0" (13.41m)

Beam: 13' 11" (4.24m)

Max Draft: 6' 0" (1.83m)

Our experienced yacht broker, Andrey Shestakov, will help you choose and buy a yacht that best suits your needs **Orion — BENETEAU** from our catalogue. Presently, at Shestakov Yacht Sales Inc., we have a wide variety of yachts available on our sale's list. We also work in close contact with all the big yacht manufacturers from all over the world.

If you would like to buy a yacht **Orion — BENETEAU** or would like help answering any questions concerning purchasing, selling or chartering a yacht, please call **+1(954)274-4435**

TABLE OF CONTENTS

| | |
|------------------------------|----|
| TABLE OF CONTENTS | 2 |
| SPECIFICATIONS | 3 |
| Overview | 3 |
| Basic Information | 3 |
| Dimensions | 3 |
| Speed, Capacities and Weight | 4 |
| Accommodations | 4 |
| Hull and Deck Information | 4 |
| Engine Information | 4 |
| DETAILED INFORMATION | 5 |
| Accommodations & Layout | 5 |
| Galley and Dinette | 5 |
| Sails & Rigging | 5 |
| Electronics & Navigation | 6 |
| Deck & Hull | 6 |
| Mechanical | 7 |
| Electrical | 7 |
| Disclaimer | 8 |
| Exclusions | 8 |
| Disclaimer | 8 |
| PHOTOS | 9 |
| CONTACTS | 16 |
| Contact details | 16 |
| Telephones | 16 |
| Office hours | 16 |
| Address | 16 |

SPECIFICATIONS

Overview

- Sleeps 8 in this 4 cabin/two head layout
- Clean and in nice condition
- Huge salon and mid ship galley
- Bruce Farr design
- In mast furling main
- Roller furling genoa
- Spare sails
- Electric winch
- B&G Chartplotter and Radar
- Autopilot
- Max prop
- Flexible Solar Panels
- Dodger with Strataglass windows
- Bimini and connector
- Walk thru Transom with swim platform
- Fresh white Imron paint on hull
- Same NY owner for last 20 years, well maintained
- Northern boat used seasonally only in Florida less than one year

Basic Information

Category: Cruising Sailboat

Sub Category: Sloop

Model Year: 1993

Year Built: 1993

Country: United States

Dimensions

LOA: 44' 0" (13.41m)

Beam: 13' 11" (4.24m)

Max Draft: 6' 0" (1.83m)

Clearance: 64' 0" (19.51m)

Speed, Capacities and Weight

Water Capacity: 250 Gallons

Holding Tank: 13 Gallons

Fuel Capacity: 55 Gallons

Accommodations

Total Cabins: 4

Hull and Deck Information

Hull Material: Fiberglass

Engine Information

Engines: 1

Manufacturer: Perkins

Model: Prima

Fuel Type: Diesel

DETAILED INFORMATION

Accommodations & Layout

- Desirable 4 cabin two head layout, sleeps 8. Perfect for a family and your cruising friends.
- The central salon features a large fixed dining table with all around seating for 8, dedicated Nav Station and a long galley midship to port. The two forward cabins each have hanging lockers and storage as well as opening hatches and ports with excellent ventilation. Both aft cabins also have locker storage, opening hatches and ports, curved panel cockpit view windows. Both heads are aft with dual access doors to salon and aft cabins. Engine access is beneath the companionway steps and side access panels from each cabin.
- Beautiful wood interior bulkheads and cabinets
- White vinyl upholstered salon cushions
- Fixed dining table with all around seating
- Teak and holly cabin sole in great condition throughout
- Tall headroom
- Easy to maintain fiberglass headliner
- Numerous opening ports and hatches offer excellent ventilation
- Majority of all hatch and port lenses have been replaced
- Generous storage under settees and cabinets
- Flatscreen TV
- Brass clock and barometer
- 12V fans
- Reading lights
- Each head has dual access doors, toilet, sink and shower

Galley and Dinette

- The midship galley has enough room for two to prep food and cook without getting in each others way and allow you to join in the conversation with your guests in the salon.
- New 2 burner Force 10 propane stove, oven and broiler
- Deep SS sink with updated single lever faucet
- Hot & cold pressure water system
- Foot pump
- Top loading Frigoboat Refrigeration and Freezer, engine driven
- Laminate countertops
- Pullout pantry storage baskets
- Drawers and cabinets

Sails & Rigging

- Z spar mast with internal furling system for Mainsail
- Z spar hard boom vang
- Heavy gauge wire standing rigging
- Traveller
- Profurl roller furling system for Genoa
- Spare Main and Genoa sails
- SS safety rails around mast
- All lines lead aft to cockpit thru Spinlock cleats
- (1) Lewmar #40 ST Electric winch on port cabin top
- (2) Lewmar #56 ST two speed Primary winches on cockpit coaming
- (1) Lewmar #40 two speed on stbd cabin top

Electronics & Navigation

- B&G Chartplotter
- B&G Radar
- Raytheon ST7000 Autopilot
- Garmin Fishfinder 160 Blue
- Wind Speed Depth
- Plastimo Compass
- Icom IC0M56 VHF
- Standard Horizon VHF
- West Marine handheld VHF
- Samsung Flatscreen TV with Alpine DVD
- Alpine AM/FM cassette stereo
- CD shuffle player

Deck & Hull

- This has been a Northern East Coast vessel for the last 20 years and had been properly winterized, hauled out and stored in the winters. She has been in Florida for less than one year and is currently on a mooring in Vero Beach.
- This vessel shows well with a fresh white Imron paint job on her hull, non skid deck in very nice condition, no spider cracks.
- New canvas dodger with Strataglass windshields, cover
- Connector piece with Eisenglass window
- Bimini with 2 flexible solar panels
- Lofrans Electric windlass with foot controls
- Anchor locker
- 45# CQR w/200' 5//16" chain
- 35# CQR
- Forward hatch to deck storage locker

- Slotted toe rail
- Bow, stern and midship cleats
- SS Safety rail around mast
- SS stanchions and lifelines, side gates
- SS bow rail SS stern rails
- Walk thru transom
- Teak inlay swim platform
- SS swim ladder
- Stern shower
- Teak grate cockpit sole at helm
- Long bench cockpit seating
- Cockpit table
- Cockpit lockers
- Lifesling
- Horseshoe buoy
- BBQ grill
- 6 PFD's
- EPIRB
- Windscoop
- Throwable seat cushions

Mechanical

- Original Perkins Prima 50 diesel engine in good operating condition, 3231 hours
- Hurth transmission
- Dripless shaft seal
- Max prop and spare 3 bladed prop
- 55 gal fuel capacity
- Racor filter
- New water pump
- Bilge pumps, 1 electric automatic, 1 electric manual, 1 hand operated
- 1 electric manual shower pump
- (2) Jabsco manual toilets
- Hot water heater
- New Shurflo pump
- Many spares

Electrical

- 220V, 50Hz, 12 V system
- 2 Flexible battery charging solar panels
- Tripp-Lite 300 watt 12 volt DC/120 volt AC Inverter

- (4) 6 volt House bank batteries
- (1) 12 volt Start battery
- Tecpro 12V25A battery charger
- Xantrex 1000 Prowatt (to install)
- Room in vessel to install a generator and air conditioning

Disclaimer

The Company offers the details of this vessel in good faith but cannot guarantee or warrant the accuracy of this information nor warrant the condition of the vessel. A buyer should instruct his agents, or his surveyors, to investigate such details as the buyer desires validated. This vessel is offered subject to prior sale, price change, or withdrawal without notice.

Exclusions

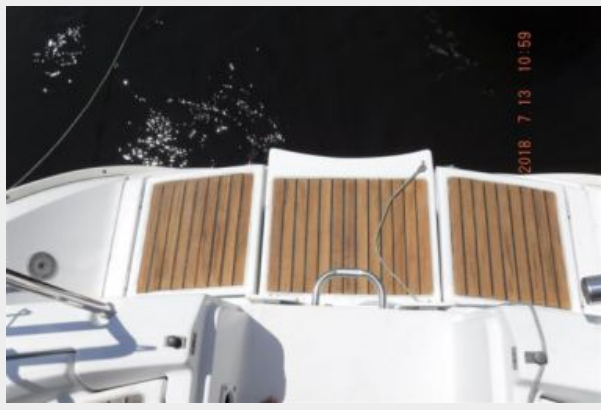
Owner's personal belongings.

Disclaimer

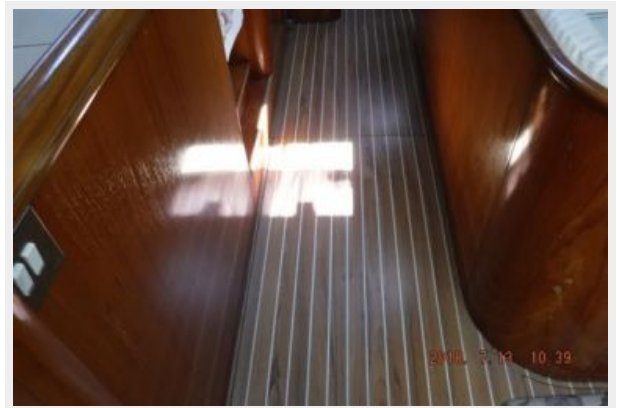
The Company offers the details of this vessel or yacht in good faith but cannot guarantee or warrant the accuracy of this information nor warrant the condition of the vessel. A buyer should instruct his representatives, agents, or his surveyors, to investigate such details as the buyer desires validated. This vessel or yacht is offered subject to prior sale, price change, or withdrawal without notice.

PHOTOS

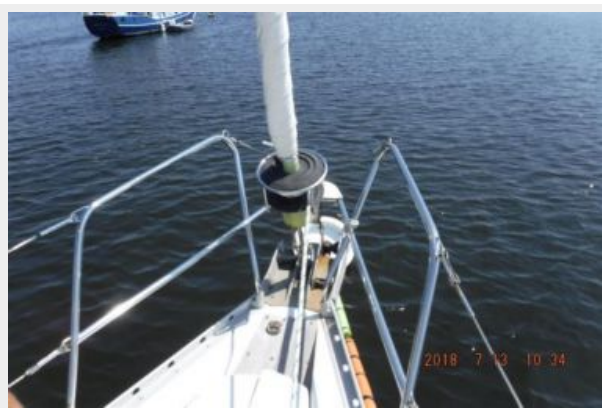














CONTACTS

Andrey Shestakov, leading yacht broker of the sales department of Shestakov Yacht Sales Inc. Shestakov Yacht Sales Inc., the official representative of the Miami/Fort Lauderdale FL headquarters.

Contact details

Email: andrey@shestakovyachtsales.com

Web: shestakovyachtsales.com/en/

Telephones

USA: +1(954)274-4435

Office hours

Monday – Saturday: **9:00 - 21:00** EDT

Sunday: **closed**

Address



Harbour Towne Marina, 850 NE 3rd St,
STE 213, Dania, FL 33004