

## QUICK SPLASH — BENETEAU



**Судостроитель:** BENETEAU

**Год постройки:** 2010

**Модель:** Sloop

**Цена:** ЦЕНА ЯХТЫ ПО ЗАПРОСУ

**Местонахождение:** United States

**Длина общая:** 50' 0" (15.24m)

**Ширина:** 14' 9" (4.50m)

**Макс. осадка:** 5' 9" (1.75m)

Купить **Quick Splash — BENETEAU** а также выбрать подходящую вам яхту из нашего каталога яхт вам поможет опытный яхтенный брокер Андрей Шестаков. На сегодняшний день компания **Shestakov Yacht Sales Inc.** имеет большое количество яхт в собственном списке продаж, а также тесно сотрудничает со всеми крупными яхтенными производителями по всему миру.

Для того чтобы купить яхту **Quick Splash — BENETEAU** а также проконсультироваться по любому вопросу связанному с покупкой, продажей, чартером яхт позвоните по телефону **+7(918)465-66-44**.

# ОГЛАВЛЕНИЕ

---

ОГЛАВЛЕНИЕ	2
ХАРАКТЕРИСТИКИ	4
Обзор	4
Основная информация	4
Размеры	4
Скорость, вместимость и масса	5
Размещение	5
Корпус и палуба	5
Информация о двигателе	5
ПОДРОБНОЕ ОПИСАНИЕ	6
Salon	6
Galley	6
Chart Table	7
Master Cabin	7
Two Aft Guest Cabins	7
Aft Head	8
Additional Inside Equipment	8
Plumbing	8
Cockpit	8
Electrical and Mechanical	9
Electronics and Navigation	9
Outside Equipment/Extras	10
Mooring	10
Deck and Hull	10
Rigging	11
Sails and Rigging	11
Hull and Deck	11
Covers	12

---

Manufacturer Description	12
Исключения	13
Отказ от ответственности	13
ФОТОГРАФИИ	14
КОНТАКТЫ	37
Контактная информация	37
Телефоны	37
Время работы	37
Адрес	37

---

# ХАРАКТЕРИСТИКИ

## Обзор

"Quick Splash" is a highly optioned and wonderfully maintained Oceanis 50. She features the preferred 3 cabin arrangement with 2 heads and the ICW friendly 63'6" mast. Her upgrades include:

- **Upgraded Yanmar 110hp Engine**
- **Bow Thruster**
- **Custom made canvas cockpit enclosure with sun deflectors and fresh Eisenglass panels as of Spring 2018**
- **Custom teak decks and cockpit**
- **Generator**
- **2000W Inverter and 100A Battery Charger**
- **Three Zone Air Conditioning and Heating**
- **Custom 2 Drawer Stainless Isotherm Refrigerators in Galley with Drop In Freezer**
- **Rocna 45 Anchor and heavy duty tackle**
- **Raymarine 4kw Radar, Touchscreen Hybrid Touch Display, Plotter, AIS and More!**
- **Impressive and Highly Upgraded Sail Inventory**
- **Custom Carbonautica Wheels at Helm Stations**

"Quick Splash" is conveniently located in Baltimore's Inner Harbor and is just minutes off of Interstate 95 and only 20-25 minutes away from Baltimore Washington International (BWI) airport. Her owner's have found their next boat and have priced this impressive yacht to sell. You will be hard pressed to find another boat of this condition and caliber. Please set up an appointment to come see her today!

## Основная информация

**Тип судна:** Sloop

**Модельный год:** 2010

**Год постройки:** 2010

**Страна:** United States

## Размеры

**Длина общая:** 50' 0" (15.24m)

**Длина по ватерлинии:** 43' 8" (13.31m)

**Длина палубы:** 49' 6" (15.09m)

**Ширина:** 14' 9" (4.50m)

**Макс. осадка:** 5' 9" (1.75m)

**Трапы:** 63' 6" (19.35m)

## Скорость, вместимость и масса

---

**Водоизмещение:** 28660 Pounds

**Вместимость воды:** 149 Gallons

**Вместимость сточного бака:** 42 Gallons

**Объем топливного бака:** 62 Gallons

## Размещение

---

**Всего кают:** 3

## Корпус и палуба

---

**Материал корпуса:** Fiberglass

## Информация о двигателе

---

**Двигатели:** 1

**Производитель:** Yanmar

**Модель:** 4JH4HTE

**Тип двигателя:** Inboard

**Тип топлива:** Diesel

---

# ПОДРОБНОЕ ОПИСАНИЕ

---

## Salon

---

The Luxury Salon features a warm and inviting space to entertain guest or just kick back and relax after a day on the water. The interior highlights a beautiful light colored Alpi wood Mahogany with indirect lighting for a softer glow to enhance the mood. The flooring is covered with a plank type laminate and all wood bulk heads. She has ample seating for guests, a full galley and storage throughout making a lengthy stay at sea feasible and comfortable. Coverings are optional Navy Blue Ultrasuade. There is a NEW 16,000 BTU Turbo Dometic/Cruiseair unit with reverse cycle here.

- Features a U shaped Salon Bench with High Density Foam
- Salon Table Inlay Wood Top, with Pivoting Wood Base
- 2 Persons Bench Seat with Central Foldaway Armrest, Storage underneath
- Storage along Hull Features Cupboards, and Cubbyhole Lockers
- Cable TV Hookup, Hoop Antenna with A/B Switch
- 40" Flat Smart Screen TV
- Two Hull Portholes with Curtains
- Panoramic Window with Pleated Blind
- Porthole Opening onto Coaming in the Starboard side Window
- Three Opening Deck Hatches with Blind/Screens
- LED Lighting throughout

## Galley

---

The Galley highlights a U shaped kitchen fitted nicely into the companionway with lots of cabinet space and a beautiful counter-top allowing plenty of space for food prep. while underway.

- Corian off white countertops
- Double S/S sinks
- Hot and Cold Pressure water
- 3 burner gimballled propane stove
- Front opening 12V Stainless 2 drawer Isotherm Refrigeration unit
- Top opening Freezer
- Built in Microwave Oven
- Water filter system
- Fitted cupboards and lockers with shelves and drawers for ample
- Double Stainless sink with Cutting Board inserts
- 3M Filtered Water system
- Force 10 Three Burner stove w/oven
- Huge 4.6 cu/ft DC top loading freezer
- 12 volt Fan cooling fan

- Teak Spice and Towel rack
- SAVING THE BEST FOR LAST.. 2 Drawer Stainless Isotherm Refrigerator (standard Beneteau Refrig was removed.)

---

## Chart Table

---

- Raymarine VHF radio w/ remote in the cockpit
- Navigator Seat with Navy Blue Ultrasuade Cushion
- Fusion Radio /Stereo with CD player, iPod and SD Card- Speakers in Cockpit and Salon

---

## Master Cabin

---

Master cabin is forward with large island berth, hanging locker, cupboard, dressing table and private head with separate shower. Headroom is 6'8" and berth is 6'7" x 5'1". There is a 6,000 BTU Marinair unit with reverse cycle here.

- Center-line Double Berth with Marine Mattress
- Dressing Table with Mirror
- Indirect Lighting
- Hanging Lockers
- 2 Deck Hatch Openings with Blind/Screen
- En-suite Jabsco Quite flush with Electric Macerator
- Holding Tank Gauges
- 12v NC solenoids close water supply to heads
- Grohe fixtures with extra Grohe drinking glass and toilet bowl brush
- Shower with Permateak floor with Door
- Custom Etched Mirror Glass above the Headboard
- New Reading Lights
- LED Ribbon accent lighting under shelving
- Forward A/C access under bunk
- Thruster/Windlass battery under bunk
- TV with Swing Out mount and Blue Ray Player

---

## Two Aft Guest Cabins

---

The Aft Cabins are massive, each having full beds that are 6'7" x 5'1", hanging lockers and private doors. There are opening hatches and ports throughout the boat for excellent ventilation. There is a 12,000 BTU Cruiseair unit with reverse cycle here.

- Both aft cabins feature a Double Berth with Marine Innerspring Mattresses
- Hanging Lockers
- Access door to aft head in starboard cabin

- New Scandovick Reading lights
- TV with Blue Ray Player in each cabin
- Storage in each outward shelf

---

## Aft Head

---

- Jabsco Quiet flush head with electric macerators
- Molded Shower with Door, Perma Teak Floor

---

## Additional Inside Equipment

---

- Air conditioning - 28k BTU 110v Air Conditioning/Heating
- Battery charger - 100A Charger/Inverter 2000W
- Refrigerator - 2 drawer SS Custom Installed ISOTHERM
- Electric bilge pump - With automatic switch wired Hot to the battery
- Electric heads - 12v Jabsco Quiet Flush standard size heads w/ macerator pumps for both
- Teak magazine racks, Teak spice rack
- New Stereo Speakers
- Insect screens for all windows

---

## Plumbing

---

- Two Fresh Water Tanks (62 gallon Port Aft Cabin, 87 gallon Forward Cabin), Two Deck Filters, Tank Selection with 1/4 Turn Valves
- Electric Water Heater 10 gallon (Operation Off Engine or ON 110 Volt Electrical System)
- Electrical Shower Drain Pumps
- Two Electric Bilge Pumps
- One Manual Bilge Pump
- One Electric Ice Box Drain Pumps
- Two 21 gallon Rigid Waste Tanks with Deck Pump Outs

---

## Cockpit

---

This Oceanis 50 cockpit has all the extras; the owner spared no expenses right down to the full rain enclosure and sun defectors. Each set has custom made storage bags.

- White Hull with Custom Dark Charcoal Bimini, Dodger, Connector, Winch Covers. Eisenglass in Bimini (7 panels replace in 4/18)
- Full Zip-off Cockpit Enclosure with Additional Sun deflector Panels
- Two Handrails on Dodger
- Custom Full Cockpit Seating Pads with arm rests



- Teak Cockpit Sole
- Two Steering Compasses on Console
- Engine Controls and Instrument Panel to Starboard
- GRP Cockpit Table with Perma Teak panels, Two Leaves, Glove Boxes, Central Bottle Holders on Reverse Side, Stainless Steel Handrail, 12 Volt Lamp with Shade
- Two Lockers under Helm Seat
- One Gas Locker for Two Bottles in Cockpit Sole
- One Emergency Tiller
- Two Waterproof Speakers on Fixed Arch
- Two Companionway Doors in Solid Wood Hinged with 7 coats of Ephanies Aft Transom
- Natural Solid Wood Decking on Sun Deck
- Stainless Steel Swimming Ladder
- One Cockpit Shower cold/hot Water
- One Life-raft Locker in upper Stern, Two Doors
- Two 30 Amp Dockside Power Inlets

---

## Electrical and Mechanical

---

- 12V Circuit - 120V circuit
- 4 House Service batteries plus 1 engine start battery
- 1 generator/thruster batteries
- Electrical panel (12V/120V) (Circuit breakers - voltmeter - water gauge - fuel gauge - battery warning - fuel warning)
- 1 12v socket - 7 120V outlets inside
- Three Reverse Cycle heat and air units 16,000 (5/2018), 12,000, 6000 BTU
- Navigation and anchor lights
- 40A battery charger
- 2000 W inverter
- 2 30AMP inlets on transom Modified with the SmartPlug
- Engine control panel in cockpit on starboard side
- Additional Control panel to Port controls extra nigh lighting
- Max Prop 3 blade feathering prop
- Bowthruster
- Northern Lights 7 kw generator with 450 hours
- Lewmar Electric Windlass
- Rocna 45 Anchor, Custom anchor spinner, 50' of 12mm chain and 150'  $\frac{3}{4}$  rode

---

## Electronics and Navigation

---

- Two Platimo compasses
- AIS 650 Transmitter/Receiver
- Raymarine I60 Wind, Depth & Speed Pod mounted

- Raymarine Hybrid Touch GPS. Navionics charts
- Raymarine VHF with RAM Mike at the helm
- Raymarine 4 Kw Radome with Kato Stainless Guard
- Bow Thruster (additional battery)
- New Fusion Stereo, Ipod module, 6 speakers, bluetooth, cockpit remote
- Raymarine Autopilot
- Quick Windlass remote control at the helm with counter

---

## Outside Equipment/Extras

---

- Air conditioning - 34k BTU 110v Air conditioning/Heating
- Lewmar Electric windlass
- Teak cockpit - Marine Hardwood Cockpit Floor
- Outboard engine bracket
- Cockpit cushions - Custom made by Ford Canvass (one of a kind) Gray with Charcoal piping
- Cockpit shower - Hot & cold
- Swimming ladder - SS on swim platform
- Cockpit table with Permateak cover and blue LED cup lights
- Tender - NONE
- Bow thruster - 6HP
- Mounting plate for Magma Grill
- Dock Side Fresh Water hook up for 2 A/C units
- Dodger, Bimini and Connector with new isinglass
- Full Cockpit Rain Enclosure with storage bags
- Full Cockpit Sun Shades with storage bags
- Full canvas covers for all hatches

---

## Mooring

---

- Windlass Control with Chain Counter at starboard binnacle. Hand held Remote in Bow Sail Locker.
- Stainless Steel Bow Fitting Two Rollers
- Eight Aluminum Mooring Cleats - Stainless Steel Dock Line Protection

---

## Deck and Hull

---

- Seawater Deck Washdown
- Dockside Water Connection
- Coast Guard Safety Package

---

## Rigging

---

- Standard Roller Furling Mast SELDEN 9/10 Electro-polished Aluminum on Deck Stepped Two Sets of Spreaders
- Genoa Furling System with Drum on the Deck
- Two Mainsheet with Blocks on GRP Fixed Arch
- Rigging Boom Vang with Tackie
- Complete Running Rigging: Main Halyard, Genoa Halyard with Clutch on Mast and Cleat Boom Topping Lift with Cleat on Mast Mainsheet, Two Genoa Sheets, Two Roller Reefing Lines, One Manual Reef
- Two Additional Halyards
- Two Electric 2 Speed Cabin Top Winches
- Two Electric 2 Speed Jib Sheet Winches
- Asymmetrical Spinnaker with Sheets, Launch Bag, Sock and Hardware

---

## Sails and Rigging

---

- Selden electro-polished aluminum double spreader RF mast with S/S rigging, solid vang and single backstay
- Upgraded Selden Genoa furler with drum on deck
- Built in fiberglass mainsail arch w/mainsheet blocks run to cockpit
- All running rigging led to cockpit
- Garhauer Ball Bering adjustable Genoa lead cars, controlled from the cockpit
- Complete running rigging - main, genoa, spinnaker halyard, boom lift, genoa sheets and vang control
- CUSTOM ICW RIG, shorter mast height, longer boom
- I : 59.83 ft
- J : 18.42 ft
- P : 55.75 ft
- E : 18.42 ft
- Boom Break
- Kevlar Boom Preventer
- Bomar Furling Asym Spinnaker Gear, controlled at the helm 2016
- Spinnaker Tack
- Spinnaker sheets
- BLUE LED Spreader up lights
- Asymmetrical Cruising Spinnaker by UK 2016
- Carbon Tape Drive Furling 140% Genoa with UV Protective Strip by Evolution 2017
- In Mast Furling Main, Carbon Tape Drive, by Evolution 2017

---

## Hull and Deck

---

- Port Cockpit locker
- 2 lockers under tiller seating
- 1 Propane locker with 1 bottles in cockpit, room for 2 bottles
- Dual Steering stations with compass at each helm, Carbonautica Custom Wheels
- Teak Wood slatted cockpit floor and benches
- Emergency Tiller
- Cockpit table with fold up leaves - handrail and lamp covered in Permateak
- Cockpit lighting in arch
- 2 companionway doors w/lock
- Harken 60CST primary winches (Both are 2 speed Electric)
- Harken 46CST maneuvering winches (Both are 2 speed Electric)
- Self bailing anchor locker
- S/S bow fitting with dual rollers and S/S bow plate
- Custom Rub rail on hull sides and transom
- 8 mooring cleats
- Hot and cold cockpit shower at transom
- S/S fold down swim ladder
- Aluminum Atlantic Towers dinghy arch w/ davits flood lighting and rear Speakers, 7:1 lift
- Horseshoe bracket
- Custom OB motor bracket
- S/S bow and stern pulpits
- S/S stanchions, double S/S lifelines with gates at cockpit

## Covers

---

- Full Bimini
- Full Dodger
- Connector
- Wheel Covers
- Hatch Covers
- Windlass cover
- Winch covers

## Manufacturer Description

---

The Beneteau Oceanis 50 represents an era of truly exceptional Beneteau sailing yachts. The profile and look of the hull and deck, designed by Berret/Racoupeau, were modernized while retaining the major assets that have made Beneteau yachts admired for decades. Below decks, Nauta drew strikingly beautiful lines combined with brilliant woodwork, and superb materials to bring the 50 to a fresh level of interior luxury.

---

## Исключения

---

При продаже яхты исключаются личные вещи владельца.

---

## Отказ от ответственности

---

Компания предоставляет описание судна или яхты добросовестно, но не может гарантировать точность этой информации, а также не ручается за техническое состояние. Покупатель должен проинструктировать своих агентов или оценщиков исследовать представленную информацию более подробно, по собственному желанию. Продажа судна или яхты, изменение цены или снятие с продажи будет происходить без предварительного уведомления.

# ФОТОГРАФИИ

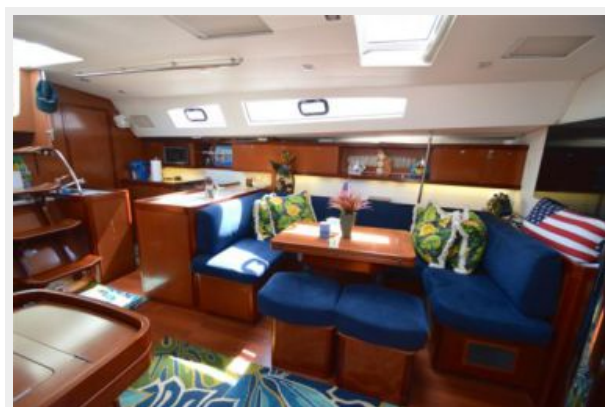


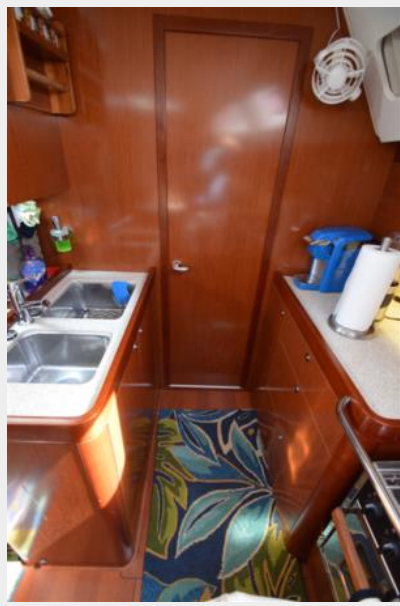








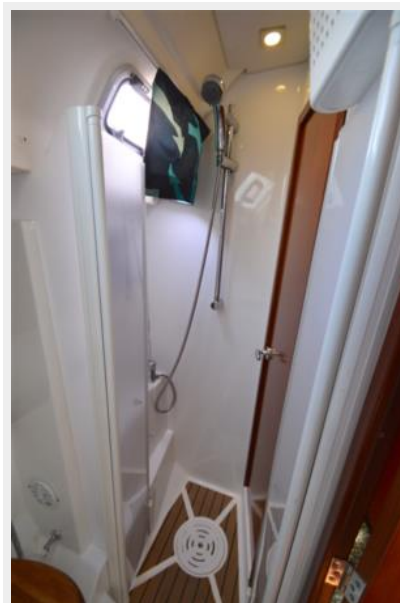
















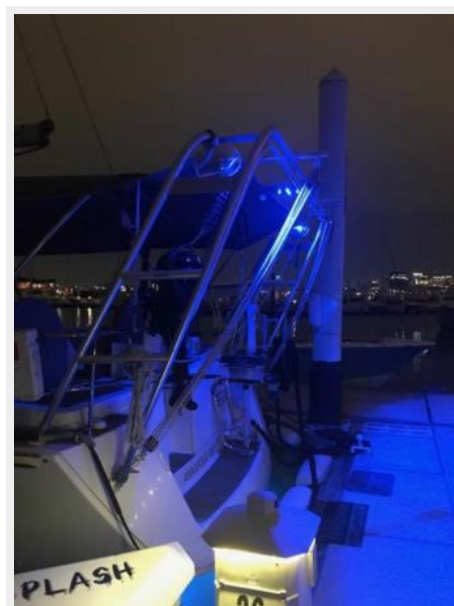




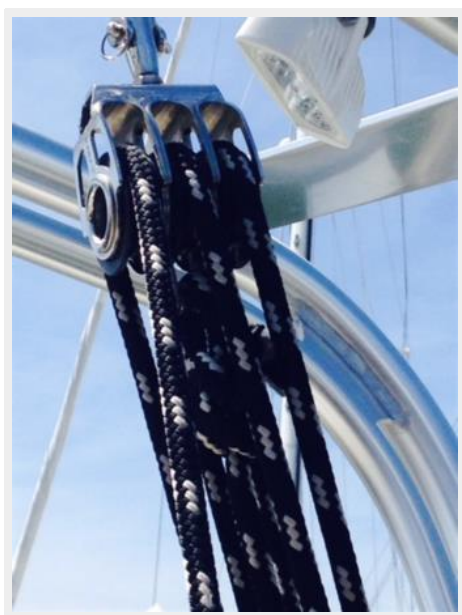


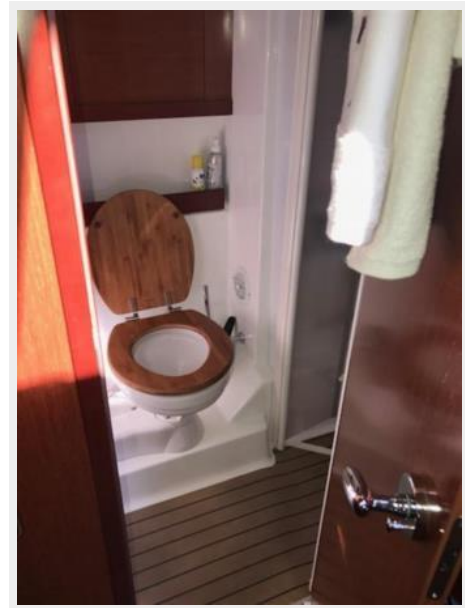






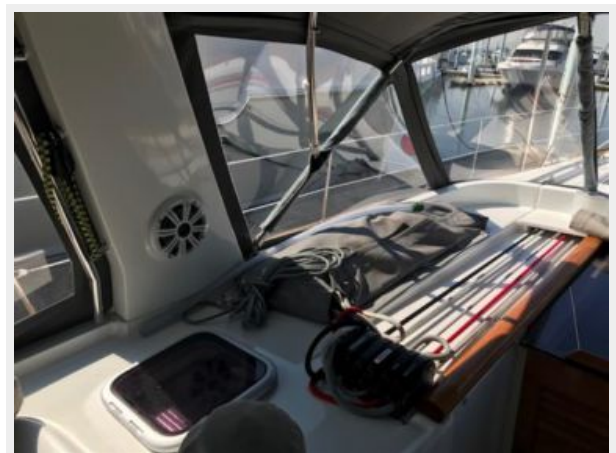










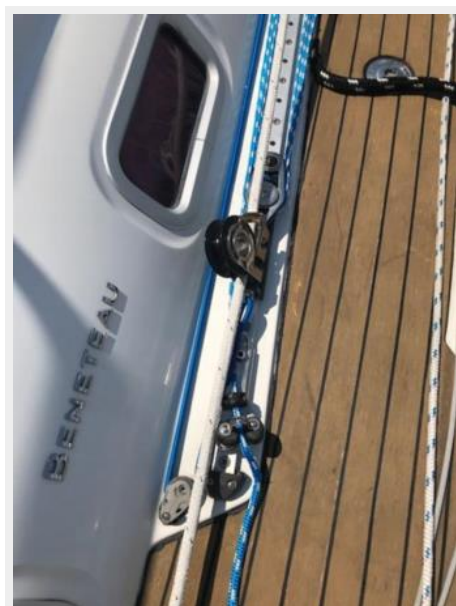
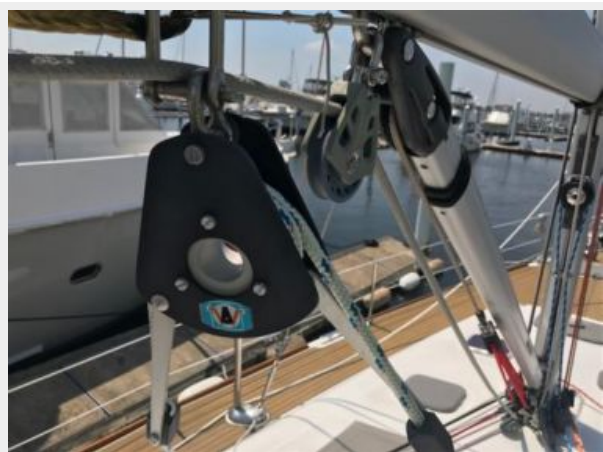


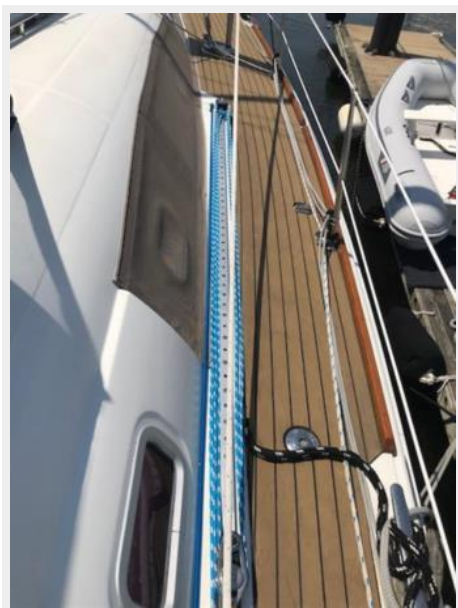


















# КОНТАКТЫ

---

Андрей Шестаков (Andrey Shestakov) – ведущий яхтенный брокер отдела продаж яхт и судов компании Shestakov Yacht Sales Inc. Официальный представитель Shestakov Yacht Sales Inc. для русскоговорящих клиентов в центральном офисе компании в Майами/Форт Лодердейл/Флорида/США.

## Контактная информация

---

Email: [andrey@shestakovyachtsales.com](mailto:andrey@shestakovyachtsales.com)

Web: [shestakovyachtsales.com](http://shestakovyachtsales.com)

## Телефоны

---

Краснодарский край: **+7(918)465-66-44**

США, Майами, Флорида: **+1(954)274-4435**

## Время работы

---

Понедельник – Суббота: **9:00 - 21:00**  
EDT

Воскресенье: **Закрито**

## Адрес

---



Harbour Towne Marina, 850 NE 3rd St,  
STE 213, Dania, FL 33004