

41FT 2005 LAGOON 410 — LAGOON



Builder: LAGOON

Year Built: 2005

Model: Cruising/Racing Sailboat

Price: PRICE ON APPLICATION

Location: United States

LOA: 41' 0" (12.50m)

Beam: 23' 3" (7.09m)

Max Draft: 3' 5" (1.04m)

Our experienced yacht broker, Andrey Shestakov, will help you choose and buy a yacht that best suits your needs 41ft 2005 Lagoon 410 — LAGOON from our catalogue. Presently, at Shestakov Yacht Sales Inc., we have a wide variety of yachts available on our sale's list. We also work in close contact with all the big yacht manufacturers from all over the world.

If you would like to buy a yacht 41ft 2005 Lagoon 410 — LAGOON or would like help answering any questions concerning purchasing, selling or chartering a yacht, please call +1(954)274-4435

TABLE OF CONTENTS

TABLE OF CONTENTS	2
SPECIFICATIONS	5
Overview	5
Basic Information	5
Dimensions	5
Speed, Capacities and Weight	6
Accommodations	6
Hull and Deck Information	6
Engine Information	6
DETAILED INFORMATION	7
DIMENSIONS	7
ACCOMODATIONS	7
VESSEL WALK THROUGH	8
SALON and GALLEY	9
ELECTRICAL and ELECTRONICS	10
Mechanical	11
Hull and Deck	11
Sails and Rigging	12
COMMENTS:	13
OWNER EXCLUSION	14
Manufacturer Provided Description	14
Exclusions	14
Disclaimer	14
PHOTOS	15
Salon	15
Nav Station	15
Salon / Galley	15
Galley-2	15

Nav Station	15
Salon- Aft	15
Cabin Level	16
Aft Berth	16
Head	16
Companionway	16
Berth	16
Berth	16
Head	17
second aft cabin	17
Head	17
Cabin	17
Head	17
Aft Berth	17
Engine room	18
Berth	18
Engine	18
Electrical	18
Cockpit / Helm	18
Cockpit-2	18
Cockpit-3	19
Helm	19
Helm-2	19
Forward view	19
Trampolines	19
Forward cabin house	19
side dek	20
Forward Deck	20
aft view	20

aft view-2	20
Overhead view	20
layout	20
Tramps	21
dockside	21
Manufacturer Provided Image: 410	21
CONTACTS	22
Contact details	22
Telephones	22
Office hours	22
Address	22

SPECIFICATIONS

Overview

BLUE WATER PROVEN VESSEL (has crossed the Atlantic on her own bottom)

In-Mast Roller Furling Main

Upgraded Engine Package – 40 HP Yanmar

Extra large aft cockpit with lots of seating, and dinette

(2) swim platforms aft

Wide side decks and huge fore-deck with trampoline

(4) interior double cabins and 4 heads w/showers

Large Salon with 360-degree panoramic view

The Lagoon 410 is perfect for around the world cruise or just a day cruise with friends and family. The forward helm position makes it possible to enjoy all-weather protection with the full-sized Bimini and dodger.

Contact listing broker today to see this comfortable cruising yacht

US import duty paid - available to all US residents

Basic Information

Category: Cruising/Racing Sailboat

Model Year: 2005

Year Built: 2005

Country: United States

Dimensions

LOA: 41' 0" (12.50m)

LWL: 38' 3" (11.66m)

Beam: 23' 3" (7.09m)

Max Draft: 3' 5" (1.04m)

Speed, Capacities and Weight

Displacement: 16900 Pounds

Water Capacity: 105 Gallons

Fuel Capacity: 32 Gallons

Accommodations

Total Cabins: 4

Total Heads: 4

Hull and Deck Information

Hull Material: Fiberglass

Hull Configuration: Catamaran

Engine Information

Engines: 2

Manufacturer: Yanmar

Model: JH4E

Engine Type: Inboard

Fuel Type: Diesel

DETAILED INFORMATION

DIMENSIONS

Length ----- 41 ft ----- 12.49 meters

LWL ----- 38 ft 3 in ----- 11.66 meters

Beam ----- 23 ft 3 in ----- 7.09 meters

Draft ----- 3 ft 5 in ----- 1.04 meters

Displacement ----- 16,900 lbs ----- 7655 Kilo

Engines – (2) Yanmar 3 JH4E 40 HJP (upgraded from 29 hp standard) 5800 hours ea

Tankage: Diesel fuel (2) x 32 gal, (2) x 120 liter

Fresh water (2) x 105 gal (2) x 400 liter

ACCOMODATIONS

Sleeps 10 in (4) double cabins and (2) single berth cabins (w/access from forward deck)

Heads – (3) Manual – (1) Electric

OWNERS' BERTH (Aft) Starbd side:

- Queen bed with marine foam mattress and foam top
- Overhead Lewmar opening hatch for ventilation
- Opening Lewmar side hatch
- Escape hatch to port
- (2) LED reading lights
- Hella ultra-quiet cabin fan
- Hanging locker and storage cabinet
- (1) Overhead LED light

AFT GUEST CABIN Port side:

- Large queen berth with marine foam cushions
- Spacious hanging locker
- Large opening overhead deck hatch
- Overhead LED lighting
- Emergency escape hatch
- (2) Personal reading lights

- Cabin fan
- 220V outlet, and 12v

GUEST HEAD:

- Forward-facing electric head
- Single vanity with dry cabinet storage below
- Vanity mirror
- Separate shower area with natural teak seat
- Shower curtain system for shower area
- Overhead LED lights
- Opening overhead Lewmar hatch
- Retractable sink faucet becomes shower head

FORWARD GUEST CABIN Port side:

- Queen berth, forward facing
- Large hanging locker
- Overhead LED light
- Direct access from cabin to guest head
- Opening Lewmar overhead hatch
- Side port for added light, fixed
- Cabin fan
- 220V outlet

FORWARD GUEST CABIN Starbd side:

- Queen berth, forward facing
- Large hanging locker
- Overhead LED light
- Direct access from cabin to guest head
- Opening Lewmar overhead hatch
- Side port for added light, fixed
- Cabin fan
- 220V outlet

(2) additional single cabins – one Port, one Starbd forward of Guest cabins with deck access

VESSEL WALK THROUGH

The large aft cockpit opens to a spacious Salon. Full of light from her panoramic forward, and side windows.

A comfortable dinette/seating area occupies the forward section of the Salon to Port and is adjoined by a Galley to Starboard that is split – part forward, and part Aft with a walkway between to the cabins on the lower deck. Completing the Salon is the large Nav Station to Port.

There are Port and Starboard stairs leading to (2) private queen-sized berths aft, and (2) private queen-sized berths forward. Each is en-suite with head and shower.

Forward, and accessed from the deck, are (2) additional single berth cabins. Also, forward is the inviting trampoline and a solid deck connecting the 2 hulls with a large storage locker built in.

SALON and GALLEY

Salon:

The Lagoon 410 features a very spacious main salon with almost 360-degree views out with a wall of windows forward and a large sliding door and window system aft. The sliding panels between the salon and cockpit allow for great connection between the two spaces. This provides a great space for lounging and entertaining. Comfortable salon seating to port wraps around a dining table that comfortably seats 5-6 people. The nav station lies to the port side of the salon seating and features a full suite of electronics and is within ear shot of the helm in the cockpit.

- Spacious main salon with nearly 360-degree views
- Full circle of salon seating, comfortably seats 5-6
- Removable center dining table
- (5) Overhead LED lights
- (2) opening Lewmar side hatches for ventilation
- storage below main salon seating
- Storage cabinet behind aft salon settee
- Cabin fan
- Pioneer speakers for stereo

Galley:

The galley offers the same panoramic views and easy connection to the cockpit as the main salon area. Located to the starboard of the salon settees, the galley offers a dual access Sea Frost refrigeration system, a gimballed stove, and lots of counter space for food prep. The sliding aft window connects the cockpit dining area with the aft facing sink and countertop area.

- Sea Frost refrigeration, front loading
- Sea Frost freezer, top loading – can also be used as second refrigerator
- Gimballed 3-burner Dometic stove and oven
- Huge counters with tons of space
- Dual bowl stainless steel sink with extendable faucet
- Pull out drawer next to stove
- (7) Storage cabinets

- Cutting board storage next to stove
- (3) Overhead LED lights
- Opening overhead Lewmar hatch for ventilation
- Cabin fan

NAV STATION:

The nav station is located to the port side of the salon with an extended settee for comfortable seating. The nav station is just inside the large sliding companionway door for easy communication between the helm. The large cockpit table offers a great space for home or office work.

- Nav station located to port side of Salon
- 36 in chart table, storage inside
- Raymarine Smart Controller portable autopilot control
- Pioneer CD player and stereo
- LED personal reading light

ELECTRICAL and ELECTRONICS

Solar Panels 675 Watt – (New 8/2017)

Batteries: house – 690 ah total (3) x 230 ah (New 8/2017)

Engine start (2) x 120 ah (New 2016)

Inverter – Auto XS 220v

Electronics:

Auto Pilot (New 9/2017)

Radar – Raymarine C120

GPS – Raymarine C120

Depth – Raymarine ST60

Wind – Raymarine ST60

Log/Speed – Raymarine ST60

Iridium GO – satellite comm.

VHF – Raymarine 240

Compass - Plastimo

EPIRB – Accusat

Stereo - pioneer

Mechanical

(2) Yanmar 3 JH4E 40 HJP (upgraded from 29 hp standard) 5800 hours ea.

(2) Yanmar sail drives (1 new)

Morse type control Cable steering system

Water maker -EcoSistems 12 volt – 25 Liter/hour (New 8/2017)

Diesel heater – Webasco

Deck Shower (2) one aft and one forward

Windlass with inside remote control (from Salon)

Hot water heater - Quick 40 liter

Bilge pumps-(2) manual – (4) electric - -- (2)automatic and (2) on switches

Hull and Deck

The wide decks of the Lagoon 410 make traversing forward very easy. With boarding gates on both the port and starboard side as well as large sugar scoop swim platforms aft, you can easily board the vessel. Inlaid steps in the cabin top lead up to the cabin top deck to the stack pack system and rig. – Single steering station to Port with twin rudders

- Rocna 40 kg anchor, 225' chain plus rode
- Plow 16 kg, Plow 20kg
- Lofrans Tigres windlass
- Salt water wash-down forward
- Trampoline
- Wide side decks
- Easy step access to cabin top
- Teak toe rail, natural
- (11) Opening Lewmar hatches
- Non-skid side decks
- Cable lifelines with 24 in. stanchions
- Custom dinghy davits with (4) solar panels mounted above
- Fresh water wash down at port swim platform (hot and cold)
- (2) 30amp hookups at starboard stern

- Liferaft mounting bracket at stern
- Stern opening hatches
- LED running lights
- Large aft swim platform storage compartments
- High bridge deck. Dinghy can pass underneath if docked stern-in

COCKPIT: The spacious cockpit of the Lagoon 410 stretches across the entire stern of the yacht. With easy walk-in access from the port and starboard aft decks, you enter right into a comfortable outdoor space, perfect for cruising or for entertaining. A spacious dining area to starboard comfortably seats 6. A large sliding glass door opens to the main salon, connecting the two comfortable seating and entertaining spaces.

- Dual Stern entrances from each swim platform and side deck
- Table to starboard, comfortably seats 6
- Raised helm seating to port, seats 2
- Varnished wood cockpit table
- Large Bimini with excellent metal structure
- Self-bailing cockpit with cockpit grating
- Cockpit cushions
- Added cockpit seating and basket storage
- Cockpit speakers
- (2) Deep storage locker below cockpit seating
- Propane storage
- Easy access to cabin top winches and stern main sheet/traveler
- Large sliding entry to main salon
- Teak cockpit flooring
- 220V outlet at helm
- 12v outlet at helm
- VHF mic hookup for Standard Horizon Ram 3 mic

Sails and Rigging

(1) Electric winch, (3) manual winches

IN-Mast roller Furling for Main

Main Sail– 2 years old

Genoa sail - 3 years old

Spare main and Genoa

SAIL AREA:

I : 45.33 ft

J : 14.08 ft

P : 48.58 ft

E : 18.67 ft Working Sail Area : 759.00 sq. ft

COMMENTS:

I am always looking for several successful features in a blue water yacht. The most important space is the cockpit and deck because that's where you plan to spend the most time. The cockpit on this yacht is large, deep, and comfortable with excellent passage in and out, and visibility in all directions, taking full advantage of the boat's 23ft-3in beam. The sliding door between cockpit and main salon is huge and beautifully connects inside and outside spaces for daily living or entertaining. EVERYTHING you need to handle or manage the boat underway is right at your fingertips or just a step or two away -- critical characteristics for offshore heavy air sailing. Once you leave the cockpit, the decks are HUGE easy to navigate. Even ascending to the cabin top is a breeze with indented steps and the shrouds within easy reach. Awesome cockpit with great seating

- Easy access to sail handling gear when solo sailing
- Swim platforms are like a staircase to the water when needed. perfect angle and easy to navigate
- Electric winch and stack pack make for a super easy-to-handle sail plan

Interior:

You have to step aboard a Lagoon to appreciate how well this model has evolved through her over 250 copies. The interior spaces just make sense. There's the large main salon with panoramic views in all directions, a spacious and functional galley with all the essentials: ample counter space, good storage, and large fridge and freezer, and a well laid out nav station on the main level just inside the door.

Huge main salon/galley/nav station area. Large vertical windows affording views in all directions

LAGOON 410 HISTORY: The history of Lagoon Catamarans began with a customer's request for the design of a fast racing multi-hull from naval architects, Marc Van Peteghem and Lauriot Prevost back in 1986. In 1988, the Lagoon 55 was introduced, sparking international demand for fast, comfortable, race-winning multi-hulls. Over the next couple of years, they were winning all the international races. As multi-hull demand exploded, the factory in Nantes, France expanded the line to include the Lagoon 57 and Lagoon 47 increasing the brand's footprint on the cruising and racing world. Soon after the Lagoon 42 and Lagoon 37 were added and well received by the US and Caribbean charter yacht market. Beneteau acquired Jeanneau in 1995 and their two factories teamed up to produce new fast catamarans in earnest. The Lagoon 410 came soon after and over 250 have been built to date, a testament to a very successful design

and execution.

OWNER EXCLUSION

10 ft inflatable tender w/17 HP Tohatsu outboard

Manufacturer Provided Description

Conceived to meet the highest standards, the Lagoon 410 is innovative and traditional at the same time. Naval architects Marc Van Peteghen and Vincent Lauriot Prévost have optimized the 410's performance while providing four double cabins and up to four independent bathrooms, ensuring everyone's privacy. The standard model includes four cabins and two large bathrooms. The vast galley and living area, which opens directly to the cockpit through a wide, sliding door, maintains the characteristic Lagoon conviviality with a 360-degree vista. The cockpit, well protected by the roof, is the focal point for exterior activities. The portside directly accesses the sea, while the starboard-side table can seat up to ten people. The placement of the helm station at the roof's rear provides a wider view, and by freeing up the rear cockpit, provides more space. In the front, the transverse net provides a superb, secure location for communing with the sea and the dolphins.

Exclusions

Owner's personal belongings.

Disclaimer

The Company offers the details of this vessel or yacht in good faith but cannot guarantee or warrant the accuracy of this information nor warrant the condition of the vessel. A buyer should instruct his representatives, agents, or his surveyors, to investigate such details as the buyer desires validated. This vessel or yacht is offered subject to prior sale, price change, or withdrawal without notice.

PHOTOS

Salon



Nav Station



Salon / Galley



Galley-2



Nav Station



Salon- Aft



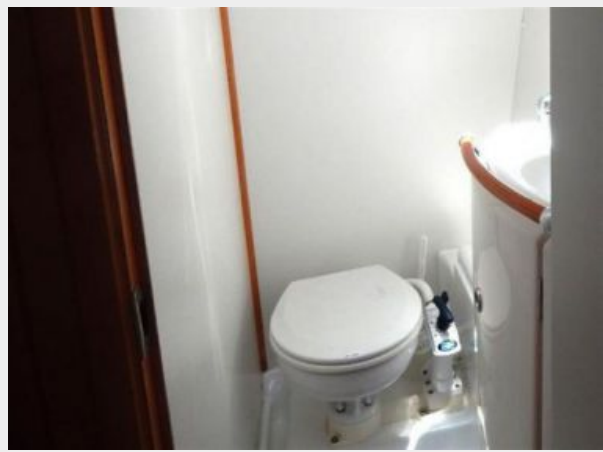
Cabin Level



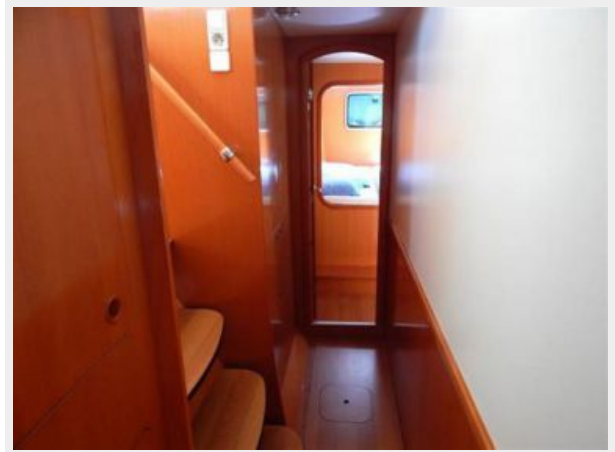
Aft Berth



Head



Companionway



Berth



Berth



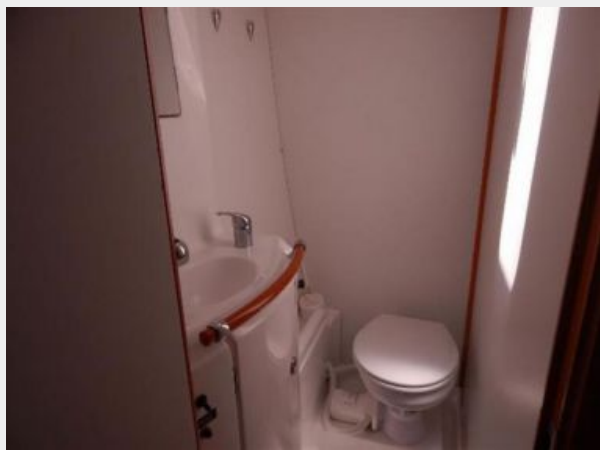
Head



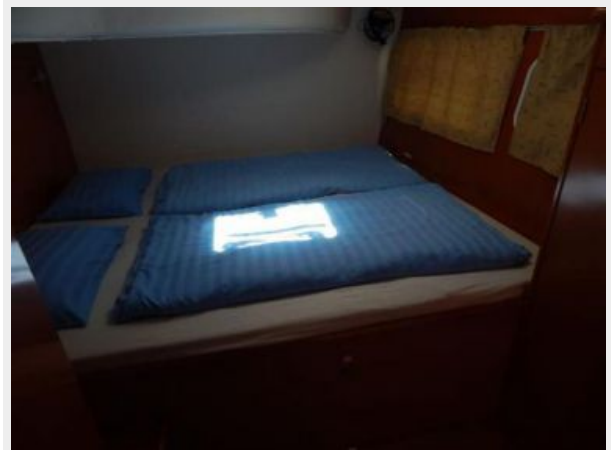
second aft cabin



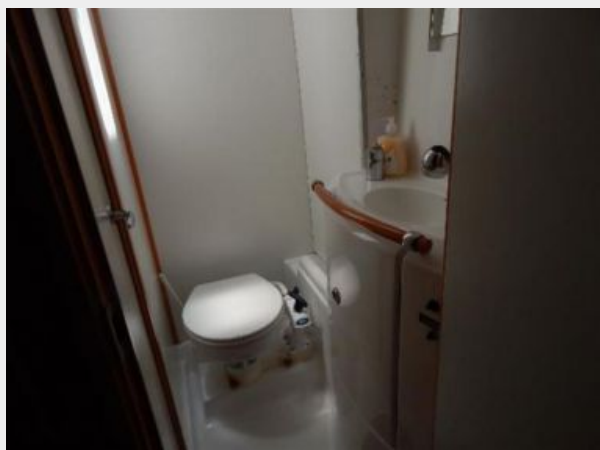
Head



Cabin



Head



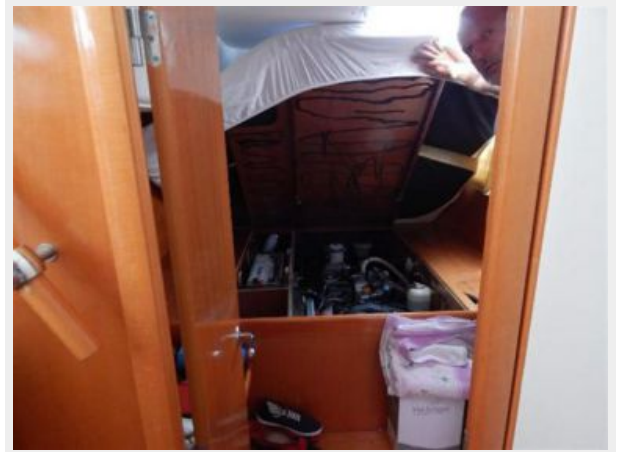
Aft Berth



Berth



Engine room



Engine



Electrical



Cockpit / Helm



Cockpit-2



Cockpit-3



Helm



Helm-2



Forward view



Trampolines



Forward cabin house



Forward Deck



side dek



aft view



aft view-2



layout



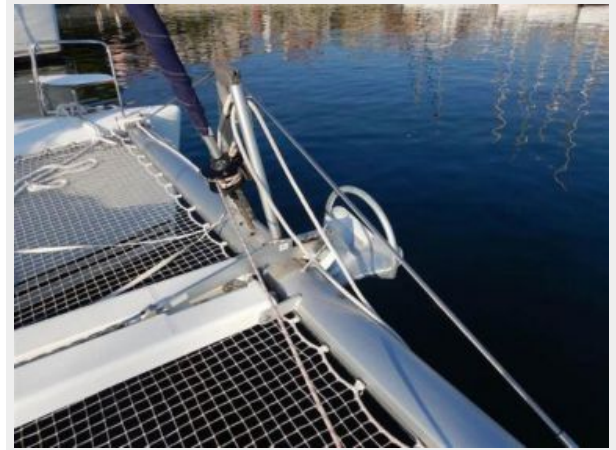
Overhead view



dockside



Tramps



Manufacturer Provided Image: 410



CONTACTS

Andrey Shestakov, leading yacht broker of the sales department of Shestakov Yacht Sales Inc. Shestakov Yacht Sales Inc., the official representative of the Miami/Fort Lauderdale FL headquarters.

Contact details

Email: andrey@shestakovyachtsales.com

Web: shestakovyachtsales.com/en/

Telephones

USA: +1(954)274-4435

Office hours

Monday – Saturday: **9:00 - 21:00** EDT

Sunday: **closed**

Address



Harbour Towne Marina, 850 NE 3rd St,
STE 213, Dania, FL 33004