

GAME ON — CABO



Builder: CABO

LOA: 40' 0" (12.19m)

Year Built: 2004

Beam: 15' 9" (4.80m)

Model: Sport Fisherman

Max Draft: 3' 5" (1.04m)

Price: PRICE ON APPLICATION

Location: United States

Our experienced yacht broker, Andrey Shestakov, will help you choose and buy a yacht that best suits your needs **Game On — CABO** from our catalogue. Presently, at Shestakov Yacht Sales Inc., we have a wide variety of yachts available on our sale's list. We also work in close contact with all the big yacht manufacturers from all over the world.

If you would like to buy a yacht **Game On — CABO** or would like help answering any questions concerning purchasing, selling or chartering a yacht, please call **+1(954)274-4435**

TABLE OF CONTENTS

TABLE OF CONTENTS	2
SPECIFICATIONS	4
Basic Information	4
Dimensions	4
Speed, Capacities and Weight	4
Accommodations	4
Hull and Deck Information	4
Engine Information	4
DETAILED INFORMATION	5
Salon	5
Galley	5
Stateroom	5
Head	5
Helm Deck	6
Cockpit	6
Fishing Equipment	6
Tower	7
Electronics	7
Deck and Hull	7
Electrical	8
Engine Room	8
Remarks	8
Exclusions	8
Disclaimer	8
PHOTOS	9
CONTACTS	15
Contact details	15
Telephones	15

Office hours	15
Address	15

SPECIFICATIONS

Basic Information

Category: Sport Fisherman	Model Year: 2005
Year Built: 2004	Country: United States

Dimensions

LOA: 40' 0" (12.19m)	Beam: 15' 9" (4.80m)
Max Draft: 3' 5" (1.04m)	

Speed, Capacities and Weight

Water Capacity: 95 Gallons	Fuel Capacity: 550 Gallons
----------------------------	----------------------------

Accommodations

Total Cabins: 1	Total Heads: 1
-----------------	----------------

Hull and Deck Information

Hull Material: Fiberglass

Engine Information

Engines: 2	Manufacturer: Caterpillar
Model: C12	Engine Type: Inboard
Fuel Type: Diesel	

DETAILED INFORMATION

Salon

- Reverse L shaped leather sofa that converts to two bunks
- Teak and Holly sole
- Flat screen TV
- Storage under companionway steps
- Storage above sofa backrest
- Overhead recessed halogen lighting
- Rod storage
- Ships electrical panel

Galley

- Refrigerator/freezer: Nova-cool side by side under counter front load units
- Stove: Kenyon ceramic glass top two burner concealed with Corian lid
- Microwave: Panasonic
- Molded in sink with single lever faucet with extension
- Corian countertops
- Recessed halogen overhead lighting

Stateroom

- Island queen berth with storage below
- Hanging lockers port and starboard – cedar lined
- Anchor locker access
- Foredeck hatch
- Rod lockers port and starboard outboard
- Recessed overhead halogen lighting
- Flat screen TV to starboard

Head

- Molded Corian countertop
- Mirrored credenza with storage behind the mirror and below countertop
- Sealand vacuflush freshwater toilet
- Shower stall with automatic shower sump pump
- Recessed overhead halogen lighting
- Safety hand rails and towel racks

Helm Deck

- Centerline helm console
- Triple Stidd helm chair layout
- L shaped settee to port
- Cruise air helm deck reverse cycle a/c
- Centerline engine room access
- CAT electronic controls
- CAT LCD electronic displays
- Signature polished Cabo switch panel
- Stainless steel steering wheel
- Overhead mounted courtesy lighting
- Drawer storage to starboard
- Helm deck raises hydraulically for complete engine access
- Miya Epoch US-9 teaser reels mounted in overhead box
- Flush mounted electronics

Cockpit

- Pompanette 4 rod rocket launcher mounted centerline
- Twin insulated in floor fish boxes
- Fresh and salt water washdowns
- 6 rod launcher mounted on aft side of hardtop
- 3 clearing rod holder on each tower leg
- Molded in diamond non-skid
- Centerline lazarette access
- Transom door with flip up gate
- Top mounted hawse pipes
- Under gunnel led lighting
- Gaff/rod storage port and starboard
- Coaming bolsters
- Rigging station with sink on port bulkhead
- Freezer with stainless steel freezer plate on bulkhead centerline
- Storage on starboard bulkhead
- Speakers under gunnel
- Centerline transom live well

Fishing Equipment

- Double spreader Rupp outriggers
- Rupp center rigger
- Miya Epoch US 9 teaser reels mounted overhead of helm
- Flush mount rod holders in cockpit gunnels

- Twin insulated in floor fish boxes
- 3 clearing rod holders on each tower leg
- 6 rod rocket launcher an aft side of hardtop
- Transom livewell
- Fresh and saltwater washdowns
- Tuna tower
- Rod storage outboard in stateroom forward and in locker to starboard of companionway

Tower

- Full tuna tower with molded hardtop
- Molded tower buggy top
- Seat with backrest and cushions
- 8" Furuno TZ touch multifunction display
- CAT electronic controls
- Icom command mic 2
- Simrad autopilot remote
- Bennet trim tab switch
- Start/stop buttons
- Quad spreader lights

Electronics

Electronics upgraded in 2012

- 3X Furuno TZ touch 14" multifunction displays
- Furuno 72 mile radar
- Simrad AP26
- Fusion IP600
- Furuno RD-30
- 2X Icom IC-M602

Deck and Hull

- White gel coated hull sides and topsides
- White gel coated engine room
- Blue boot stripe
- Blue bottom paint
- Aluminum bow rail
- Anchor pulpit with electric windlass
- Rupp double spreader outriggers
- White and blue Underwater lights with flashing options

Electrical

- 50-amp shore power with Glendinning cable master
- Full bonding system
- Salon DC distribution panel with line voltage and load meter
- Salon AC distribution panel with line voltage, load meter, and reverse polarity light
- Phase three – three stage smart battery charger
- Vanner 60-amp voltmaster battery charger

Engine Room

- Twin Caterpillar C-12 715 hp marine diesel engines with 1480 hours
- ZF transmissions with trolling valves
- 12 kw Westerbeke generator with 1600 hours
- Automatic fire extinguishing system
- Emergency crash pump on starboard motor
- Metal braided fire-resistant fuel lines
- Reverso oil change system
- Reverso fuel priming system with separate pumps
- AC/DC lighting
- Dual Racor 1000 for each motor
- Cruiseair a/c compressors located starboard outboard

Remarks

With incredible original low hours of 1480, Game On is a great example of how Cabo Yachts built their boats to be held in the highest standard of yachting and fishing. Fully rigged with a gap style tuna tower, reliable Caterpillar power, and an upgraded electronics package. She is ready for any situation the seas bring. Call today to schedule a showing!

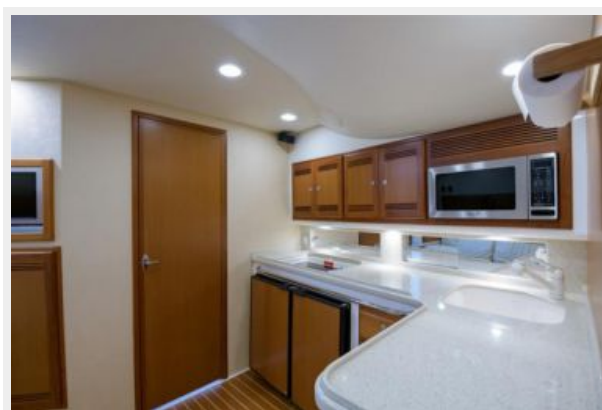
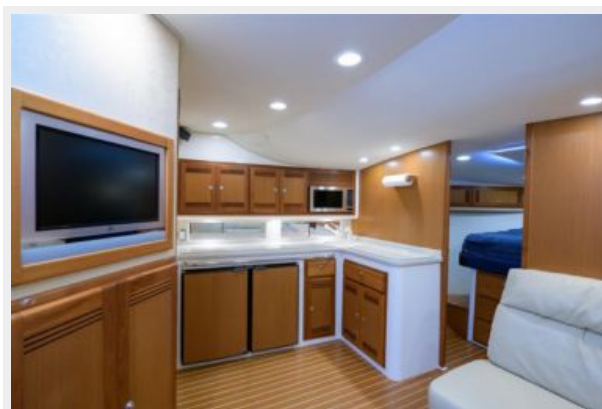
Exclusions

Owner's personal belongings.

Disclaimer

The Company offers the details of this vessel or yacht in good faith but cannot guarantee or warrant the accuracy of this information nor warrant the condition of the vessel. A buyer should instruct his representatives, agents, or his surveyors, to investigate such details as the buyer desires validated. This vessel or yacht is offered subject to prior sale, price change, or withdrawal without notice.

PHOTOS













CONTACTS

Andrey Shestakov, leading yacht broker of the sales department of Shestakov Yacht Sales Inc. Shestakov Yacht Sales Inc., the official representative of the Miami/Fort Lauderdale FL headquarters.

Contact details

Email: **andrey@shestakovyachtsales.com**

Web: shestakovyachtsales.com/en/

Telephones

USA: **+1(954)274-4435**

Office hours

Monday – Saturday: **9:00 - 21:00 EDT**

Sunday: **closed**

Address



Harbour Towne Marina, 850 NE 3rd St,
STE 213, Dania, FL 33004