

## XANADU — GULFSTAR



**Builder:** GULFSTAR

**Year Built:** 1980

**Model:** Cruising Sailboat

**Price:** PRICE ON APPLICATION

**Location:** United States

**LOA:** 47' 0" (14.33m)

**Beam:** 13' 8" (4.17m)

**Max Draft:** 5' 6" (1.68m)

Our experienced yacht broker, Andrey Shestakov, will help you choose and buy a yacht that best suits your needs **Xanadu — GULFSTAR** from our catalogue. Presently, at Shestakov Yacht Sales Inc., we have a wide variety of yachts available on our sale's list. We also work in close contact with all the big yacht manufacturers from all over the world.

If you would like to buy a yacht **Xanadu — GULFSTAR** or would like help answering any questions concerning purchasing, selling or chartering a yacht, please call **+1(954)274-4435**

---

# TABLE OF CONTENTS

---

TABLE OF CONTENTS	2
SPECIFICATIONS	3
Overview	3
Basic Information	3
Dimensions	3
Speed, Capacities and Weight	3
Accommodations	3
Hull and Deck Information	4
Engine Information	4
PHOTOS	5
CONTACTS	16
Contact details	16
Telephones	16
Office hours	16
Address	16

---

# SPECIFICATIONS

---

## Overview

---

Xanadu is truly one of if not the very nicest Gulfstar 47 Sailmaster period. From the engine room with a 2010 John Deere Engine along with Norpro Generator 9 KW in a sound box nicely done and all easily accessible and clean. Roller furling along with the stack pack make her a joy to sail. All systems have been constantly upgraded. The galley is fully equipped, including water maker, stand up refrigerator freezer and top load refrigerator-freezer. She is well appointed and ready to go. You will not be disappointed !!!

## Basic Information

---

**Category:** Cruising Sailboat

**Sub Category:** Cruising Ketch

**Model Year:** 1980

**Year Built:** 1980

**Country:** United States

## Dimensions

---

**LOA:** 47' 0" (14.33m)

**Beam:** 13' 8" (4.17m)

**Max Draft:** 5' 6" (1.68m)

## Speed, Capacities and Weight

---

**Displacement:** 38000 Pounds

**Water Capacity:** 200 Gallons

**Holding Tank:** 30 Gallons

**Fuel Capacity:** 283 Gallons

## Accommodations

---

**Total Cabins:** 2

**Total Heads:** 2

---

## Hull and Deck Information

---

**Hull Material:** Fiberglass

## Engine Information

---

**Engines:** 1

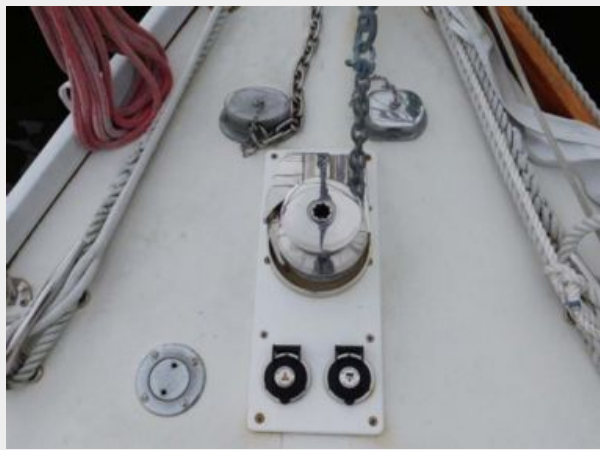
**Manufacturer:** John Deere

**Model:** 4.5L

**Engine Type:** Inboard

**Fuel Type:** Diesel

# PHOTOS





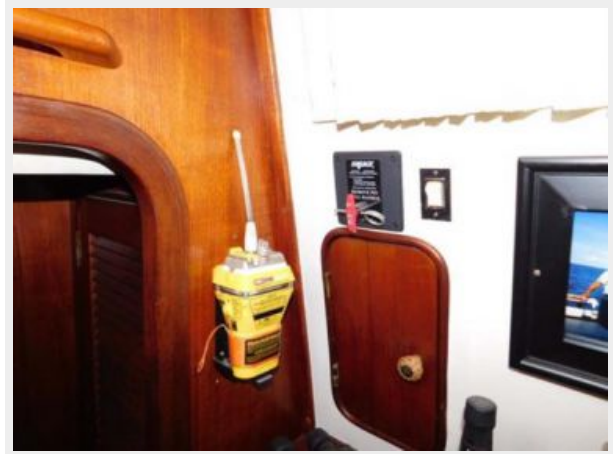




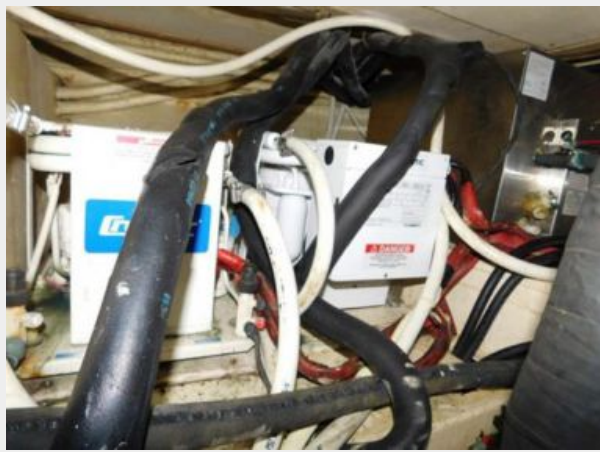




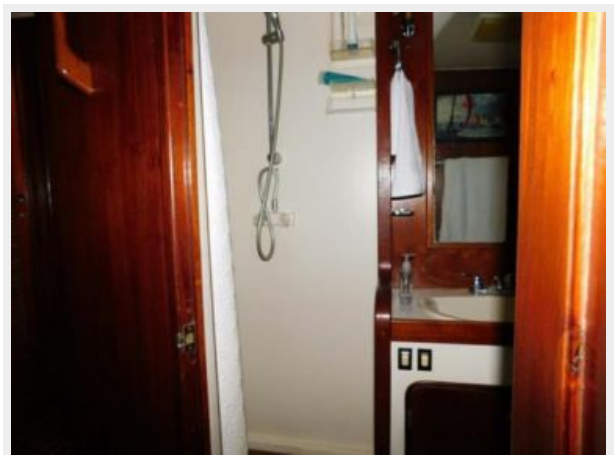












# CONTACTS

---

Andrey Shestakov, leading yacht broker of the sales department of Shestakov Yacht Sales Inc. Shestakov Yacht Sales Inc., the official representative of the Miami/Fort Lauderdale FL headquarters.

## Contact details

---

Email: [andrey@shestakovyachtsales.com](mailto:andrey@shestakovyachtsales.com)

Web: [shestakovyachtsales.com/en/](http://shestakovyachtsales.com/en/)

## Telephones

---

USA: +1(954)274-4435

## Office hours

---

Monday – Saturday: **9:00 - 21:00** EDT

Sunday: **closed**

## Address

---



Harbour Towne Marina, 850 NE 3rd St,  
STE 213, Dania, FL 33004