

WINDWALKER II — LYMAN MORSE BOAT CO.



Судостроитель:

LYMAN MORSE BOAT CO.

Год постройки: 1999

Модель: Aft Cockpit

Цена: **ЦЕНА ЯХТЫ ПО ЗАПРОСУ**

Местонахождение: United States

Длина общая: 60' 0" (18.29m)

Ширина: 16' 0" (4.88m)

Мин. осадка: 6' 6" (1.98m)

Макс. осадка: 0' 0" (0.00m)

Крейс. скорость: 8 Kts. (9 MPH)

Макс. скорость: 9 Kts. (10 MPH)

Купить **WINDWALKER II — LYMAN MORSE BOAT CO.** а также выбрать подходящую вам яхту из нашего каталога яхт вам поможет опытный яхтенный брокер Андрей Шестаков. На сегодняшний день компания **Shestakov Yacht Sales Inc.** имеет большое количество яхт в собственном списке продаж, а также тесно сотрудничает со всеми крупными яхтенными производителями по всему миру. Для того чтобы купить яхту **WINDWALKER II — LYMAN MORSE BOAT CO.** а также проконсультироваться по любому вопросу связанному с покупкой, продажей, чартером яхт позвоните по телефону **+7(918)465-66-44.**

ОГЛАВЛЕНИЕ

ОГЛАВЛЕНИЕ	2
ХАРАКТЕРИСТИКИ	5
Обзор	5
Основная информация	5
Размеры	5
Скорость, вместимость и масса	6
Размещение	6
Корпус и палуба	6
Информация о двигателе	6
ПОДРОБНОЕ ОПИСАНИЕ	7
REMARKS	7
ACCOMMODATIONS and LAYOUT	7
ELECTRONICS and NAVIGATION EQUIPMENT	8
ELECTRICAL SYSTEM	9
MECHANICAL EQUIPMENT and ENGINE DETAILS	9
HULL	10
MAST, SAILS and RIGGING	10
DECK and DECK EQUIPMENT	11
EXCLUSIONS	12
Исключения	12
Отказ от ответственности	12
ФОТОГРАФИИ	13
Interior, Looking Fwd.	13
On Mooring	13
Main Salon, Looking Fwd.	13
Main Salon, Stbd.	13
Nav Area	13
Main Salon, Port	13

Salon, Looking Aft	14
Overhead Detail	14
Owner's Cabin	14
Owner's Cabin, Stbd.	14
Owner's Cabin, Port	14
Fwd. Head and Shower	14
Fwd. Guest Cabin	15
Cabins, Fwd.	15
Galley	15
Galley Looking Aft	15
Aft Guest Cabin	15
Aft Head	15
Under Sail	16
At Dock	16
Stemhead	16
Foredeck	16
Looking Aft	16
Midships	16
Looking Fwd.	17
Cockpit, Looking Aft	17
Cockpit	17
Helm	17
Aft Port Qtr.	17
Aft Deck	17
Aerial View, Fwd.	18
Aerial View, Aft	18
Carbon Rig	18
Engine Compartment	18
Main Engine	18

Hood/Lyman-Morse Custom 60 Layout	18
КОНТАКТЫ	19
Контактная информация	19
Телефоны	19
Время работы	19
Адрес	19

ХАРАКТЕРИСТИКИ

Обзор

The talented craftsmen of the Lyman-Morse Boat Building Company in Thomaston, Maine, combined traditional woodworking skills with modern composite construction techniques to create the magnificent sailing yacht WINDWALKER II. Her beautiful profile and exquisite joinery details, all maintained "like new," will impress anyone. This handsome shoal-draft centerboard design by Ted Hood is easily driven in light winds and is seakindly offshore.

The incredible equipment list allows for safe offshore sailing and comfortable extended cruising. Recent significant upgrades include new engine, generator, teak decks and flush deck hatches. Without a doubt, the combination of Lyman-Morse's fine Maine craftsmanship, Ted Hood's proven design performance and a dedicated owner make WINDWALKER II the finest yacht available in this size range.

Основная информация

Тип судна: Aft Cockpit	Подкатегория: Крейсерская яхта
Модельный год: 1999	Год постройки: 1999
Страна: United States	Номер регистрации в береговой охране: 1086426

Размеры

Длина общая: 60' 0" (18.29m)	Длина по ватерлинии: 45' 8" (13.92m)
Ширина: 16' 0" (4.88m)	Мин. осадка: 6' 6" (1.98m)
Макс. осадка: 0' 0" (0.00m)	

Скорость, вместимость и масса

Крейс. скорость: 8 Kts. (9 MPH)

Макс. скорость: 9 Kts. (10 MPH)

Водоизмещение: 57000 Pounds

Вместимость воды: 218 Gallons

Вместимость сточного бака: 50 Gallons

Объем топливного бака: 318 Gallons

Размещение

Всего кают: 3

Спальные места: 8

Всего ком. состава: 2

Корпус и палуба

Материал корпуса: Composite

Материал палубы: Teak

Комплектация корпуса: Centerboard

Цвет корпуса: Black

Дизайнер корпуса: Ted Hood

Информация о двигателе

Двигатели: 1

Производитель: Volvo

Модель: D3

Тип двигателя: Inboard

Тип топлива: Diesel

ПОДРОБНОЕ ОПИСАНИЕ

REMARKS

The talented craftsmen of the Lyman-Morse Boat Building Company in Thomaston, Maine, combined traditional woodworking skills with modern composite construction techniques to create the magnificent sailing yacht WINDWALKER II. Her beautiful profile and exquisite joinery details, all maintained "like new," will impress anyone. This handsome shoal-draft centerboard design by Ted Hood is easily driven in light winds and is seakindly offshore.

The incredible equipment list allows for safe offshore sailing and comfortable extended cruising. Recent significant upgrades include new engine, generator, teak decks and flush deck hatches. Without a doubt, the combination of Lyman-Morse's fine Maine craftsmanship, Ted Hood's proven design performance and a dedicated owner make WINDWALKER II the finest yacht available in this size range.

ACCOMMODATIONS and LAYOUT

WINDWALKER II sleeps six in three private staterooms, plus two in the main salon. The interior is beautifully finished in hand-crafted teak with satin finish and gloss accents. White bulkheads, hull ceilings and tongue and groove overhead, combined with raised-panel teak lockers and laminated deck beams, create a truly classic Herreshoff style. Floorboards are teak and holly with a gloss finish, all refinished, 2013, with two-part varnish.

The open feeling below is further accentuated by topside windows and numerous hatches and portholes. Tasteful décor and fabrics throughout including throw pillows, bedding and towels.

Master Stateroom

The owner's cabin forward features a centerline queen berth with seats each side. There are two large hanging lockers, twin bureaus and numerous other drawers and lockers. All new fabrics, 2013.

Fwd Head/Shower

Next aft to port is the head with Corian countertops and VacuFlush toilet. A shower stall with teak grate is adjacent with separate access from salon/guest cabin.

Forward Guest Stateroom

The forward guest cabin is to starboard and features a large lower berth with fold-down upper berth. There is a wash basin, hanging locker and bureau along with several drawers.

Main Salon

The main salon includes a U-shaped settee to starboard with customized dining table that expands from a cocktail table and is highlighted by intricate inlays. Outboard of the settee is a pilot berth with TV forward in cabinet. To port are two swivel chairs, a concealed icemaker and spacious navigation station with ship's electrical control panel.

Aft Guest Stateroom

The second guest cabin is aft to port, with generous upper/lower berths, a bureau and numerous other drawers.

Aft Guest Head/Shower

The en-suite head/shower is also accessible from the base of the companionway to provide a convenient day head.

Galley

A U-shaped galley is to starboard with vertical door leading aft to large engine room space under cockpit. The galley is large by any standard with generous countertop area, extensive storage space and twin vertical doors for easy refrigerator/freezer access. Other features include:

- Granite countertops with honeycomb core
- Twin stainless steel sinks with retractable faucet
- Force 10 four-burner propane stove with (3) 10 lb tanks
- GE microwave oven
- Sea Frost 24 volt refrigerator and freezer systems (all new 2016)
- Sea Frost 24 volt long-term freezer compartment under sole (new 2016)
- All drawers on roller slides
- Custom glass, bottle and dish storage
- Full galleyware, including pots and pans, dishes, glasses and utensils

ELECTRONICS and NAVIGATION EQUIPMENT

- Furuno Navnet 3D radar and GPS/plotter (new 2013) with displays at nav and helm and C-maps for U.S. east coast, Caribbean and AIS
- Raymarine autopilot with remote hand-held
- Furuno GP-37 GPS
- Raymarine instruments with (4) displays in cockpit, (1) display at nav station
- ICOM M-604 VHF (2010) at nav with command mic at helm
- Uniden loud hailer with remote in cockpit
- ICOM M-802 SSB (new 2013)
- Fusion DVD/CD player with speakers in salon, cockpit and each cabin, with separate volume controls and iPod adapters
- Panasonic TV
- KVH Satellite phone (2010)

- KVH/Fleet broadband antenna
- Syrens WiFi receiver/amplifier

ELECTRICAL SYSTEM

- 24 volt DC/ 240 volt AC electrical system
- Custom electrical control panel at nav station
- Kohler 13 kW generator (new 2013, 425 hours as of spring, 2020)
- (1) 50-Amp shore power inlet with cable
- Mastervolt 100-amp battery charger
- Mastervolt 3500 Watt inverter
- Mastervolt battery monitor
- 100 Amp engine alternator
- (6) 8D AGM house batteries (2018)
- (2) Engine/generator start batteries (2017)
- High water bilge alarm
- Cantalupi flush chrome overhead light with dimmers
- Accent lights with dimmers
- Frigast stainless steel reading lights
- (6) Hella cabin fans

MECHANICAL EQUIPMENT and ENGINE DETAILS

- Volvo D3 five cylinder, 150 hp diesel engine (new 2016 - 330 hours as of spring, 2020) with Walters V-drive
- 3-Blade Max feathering propeller
- New cutlass bearing (2018)
- Spurs line cutters
- Volvo electronic engine controls
- Lewmar 200 SVT 24 volt retractable bow thruster
- Edson steering system with custom FRP pedestal
- Edson varnished teak and holly steering wheel (new 2013)
- Fireboy engine room fire extinguisher
- Tank tender gauges
- Headhunter fresh water pump
- Torrid 12-gallon water heater
- Salt water deck washdown
- Hot/cold shower at stern
- Raritan icemaker
- Asko washer and dryer
- (2) Automatic electric bilge pumps
- (2) Manual bilge pumps

- (2) VacuFlush toilets
- 50-Gallon holding tank with overboard discharge
- 50-Gallon gray water tank
- Marine Air reverse-cycle air conditioning (3-zone), forward unit new (2017)
- Sea Recovery watermaker, 50 gallons/hour

HULL

The hull was laminated using the Scrimp resin infusion process, creating a hull lamination that is completely uniform in the resin-to-fiber ratio as well as complete adhesion of the foam core material to the inner and outer skins. The Scrimp process results in an extremely strong hull and internal structure. Because of the owners' desire for a traditionally styled interior and exterior, the deck of WINDWALKER II was built with a varnished teak cabin trunk with beautifully laid teak decks that were completely replaced in 2016. The deck was laid over laminated teak and ash deck beams, creating a beautifully detailed interior overhead scheme.

Topsides are black Awlgrip with clear coat. Gold leaf cove stripe, single white boot, green bottom. Painted rubrail with stainless striker (all paint new 2013). Bottom was soda-blasted with new epoxy barrier coat, 2014.

Her centerboard configuration offers minimum draft of 6'-6" with board up and maximum draft of 13-8" with board down.

MAST, SAILS and RIGGING

Mast and Rigging

- GMT carbon fiber triple spreader mast (2004)
- Carbon fiber Park Avenue boom with lazy jacks
- Reckmann hydraulic genoa furler (2004)
- Navtec rod rigging (2004), serviced and tested regularly
- Removable inner forestay/runners
- Navtec hydraulic backstay, boom vang, outhaul
- Insulated backstay for SSB
- Carbon spinnaker pole
- Multiple spreader lights

Sails

- North 3DI full battened mainsail (2014)
- North 3DI 130% genoa (2014)
- North spectra/carbon 130% cruising genoa (2015)
- Main Sailing Partners full batten mainsail, Spectra/carbon (2005)

- 90% Spectra jib top (2000)
- 1.5 oz. cruising asymmetrical spinnaker
- 1.5 oz. asymmetrical spinnaker (2010)
- Genoa staysail (2010)
- Staysail
- Storm staysail
- Storm trysail

DECK and DECK EQUIPMENT

- Lewmar windlass with remote at helm (new 2015)
- 66 lb. Bruce anchor with 300' all-chain rode
- 65 lb. CQR with rope/chain rode
- Luke storm anchor with rope/chain rode
- (4) S/S cowl vents with teak dorade boxes
- (4) Custom Freeman flush deck hatches (new 2013)
- (4) S/S deck hatches (new glass 2017)
- (12) S/S opening portholes
- (3) Fixed hull windows (re-bedded 2013)
- (2) Deck prisms
- Antal genoa tracks, turning blocks (new 2013), jammers etc.
- Antal main traveler system with custom S/S bridge
- (2) Antal #52 ST halyard winches
- (2) Antal #70 ST electric primaries
- (2) Antal #52 ST electric secondaries
- (2) Antal #65 ST electric mainsheet winches
- (1) Antal #52 ST electric main halyard/centerboard winch
- (1) Antal #40 ST reef/traveler winch
- Varnished teak toe rails, cabin side, handrails, dorade boxes, cockpit trim
- Custom teak cockpit table with cooler built in
- Covers for steering pedestal and cockpit table
- Covers for handrails and dorade boxes
- Dodger
- Cockpit awning
- Deck awning
- S/S side swim ladder
- S/S side boarding ladder
- GMT carbon stern passerelle
- (2) 10 lb. propane tanks
- Winslow 10-man life raft in valise with ditch bag
- (10) Life jackets
- 406 EPIRB
- Jacklines

- Flares
- Horseshoe life ring
- MOB
- Life sling
- (3) Portable fire extinguishers
- Weems and Plath clock/barometer
- Teak ensign pole
- Navatrol stainless steel propane barbecue
- Achilles 10.2 hard bottom inflatable (2010)
- Yamaha 15 hp outboard (2010)
- Custom deck chocks for dinghy
- Cockpit cushions with backrests
- Full complement of extensive spares

EXCLUSIONS

- Owner's personal effects
- Artwork
- Tools
- Inflatable PFD's, personal AIS and harnesses
- Binoculars

Исключения

При продаже яхты исключаются личные вещи владельца.

Отказ от ответственности

Компания предоставляет описание судна или яхты добросовестно, но не может гарантировать точность этой информации, а также не ручается за техническое состояние. Покупатель должен проинструктировать своих агентов или оценщиков исследовать представленную информацию более подробно, по собственному желанию. Продажа судна или яхты, изменение цены или снятие с продажи будет происходить без предварительного уведомления.

ФОТОГРАФИИ

On Mooring



Interior, Looking Fwd.



Main Salon, Looking Fwd.



Main Salon, Stbd.



Main Salon, Port



Nav Area



Salon, Looking Aft



Overhead Detail



Owner's Cabin



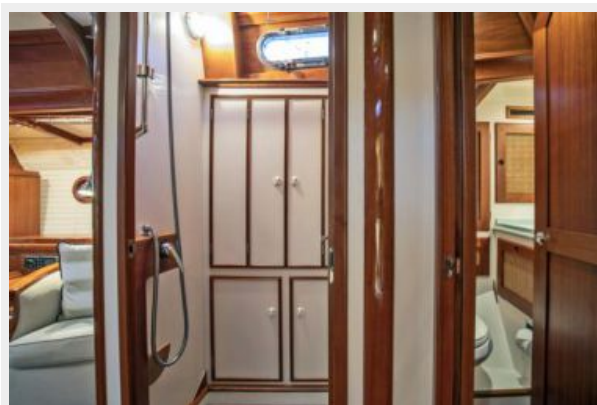
Owner's Cabin, Stbd.



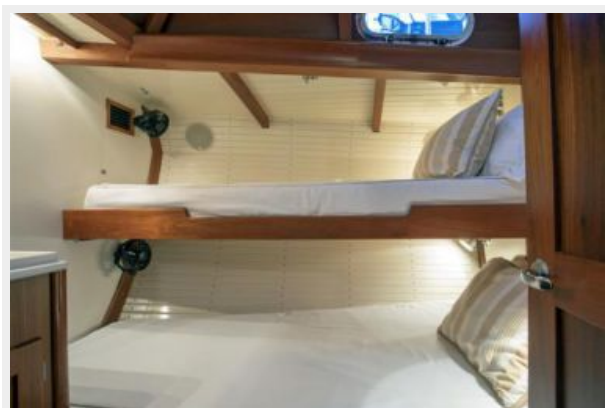
Owner's Cabin, Port



Fwd. Head and Shower



Fwd. Guest Cabin



Cabins, Fwd.



Galley



Galley Looking Aft



Aft Guest Cabin



Aft Head



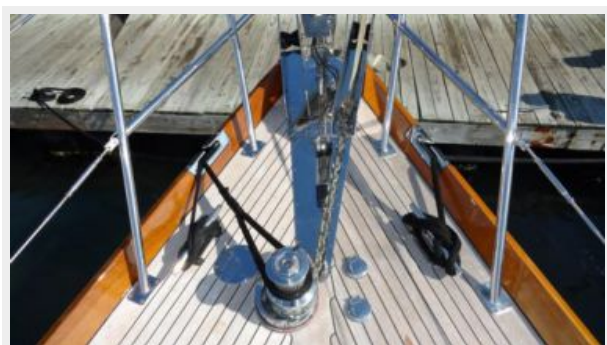
Under Sail



At Dock



Stemhead



Foredeck



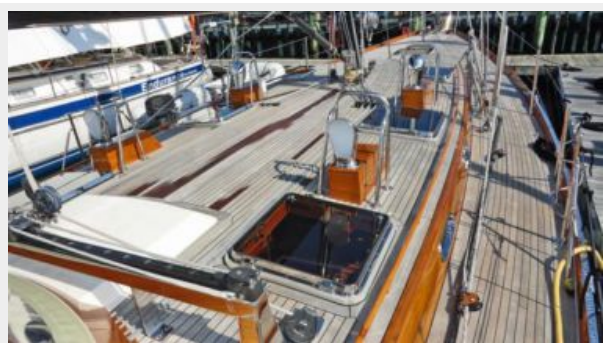
Looking Aft



Midships



Looking Fwd.



Cockpit, Looking Aft



Cockpit



Helm



Aft Deck



Aft Port Qtr.



Aerial View, Fwd.



Aerial View, Aft



Carbon Rig



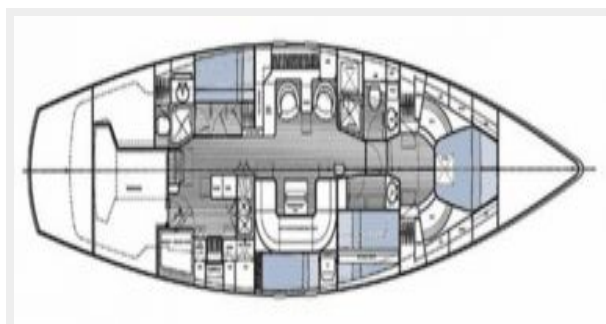
Engine Compartment



Main Engine



Hood/Lyman-Morse Custom 60 Layout



КОНТАКТЫ

Андрей Шестаков (Andrey Shestakov) – ведущий яхтенный брокер отдела продаж яхт и судов компании Shestakov Yacht Sales Inc. Официальный представитель Shestakov Yacht Sales Inc. для русскоговорящих клиентов в центральном офисе компании в Майами/Форт Лодердейл/Флорида/США.

Контактная информация

Email: andrey@shestakovyachtsales.com

Web: shestakovyachtsales.com

Телефоны

Краснодарский край: **+7(918)465-66-44**

США, Майами, Флорида: **+1(954)274-4435**

Время работы

Понедельник – Суббота: **9:00 - 21:00**
EDT

Воскресенье: **Закрыто**

Адрес



Harbour Towne Marina, 850 NE 3rd St,
STE 213, Dania, FL 33004