

SORAYANNIS — NAUTOR'S SWAN



Судостроитель: NAUTOR'S SWAN

Длина общая: 54' 1" (16.48m)

Год постройки: 2016

Модель: Cruising/Racing Sailboat

Цена: ЦЕНА ЯХТЫ ПО ЗАПРОСУ

Местонахождение: United Kingdom

Купить SorayAnnis — NAUTOR'S SWAN а также выбрать подходящую вам яхту из нашего каталога яхт вам поможет опытный яхтенный брокер Андрей Шестаков. На сегодняшний день компания Shestakov Yacht Sales Inc. имеет большое количество яхт в собственном списке продаж, а также тесно сотрудничает со всеми крупными яхтенными производителями по всему миру.

Для того чтобы купить яхту SorayAnnis — NAUTOR'S SWAN а также проконсультироваться по любому вопросу связанному с покупкой, продажей, чартером яхт позвоните по телефону **+7(918)465-66-44**.

ОГЛАВЛЕНИЕ

ОГЛАВЛЕНИЕ	2
ХАРАКТЕРИСТИКИ	3
Обзор	3
Основная информация	3
Размеры	3
Скорость, вместимость и масса	3
Размещение	4
Корпус и палуба	4
ПОДРОБНОЕ ОПИСАНИЕ	5
Detailed information	5
Исключения	36
Отказ от ответственности	36
ФОТОГРАФИИ	37
КОНТАКТЫ	39
Контактная информация	39
Телефоны	39
Время работы	39
Адрес	39

ХАРАКТЕРИСТИКИ

Обзор

SorayAnnis is a very highly specified Swan 54 designed for the easiest of short-handed sailing. Her main highlights are:

- Effortless powered in-mast furling for true single handed sailing
- Variable draft - daggerboard and twin rudders reducing draft to just 1.4 metres (sailing draft 3.7 metres)
- Bow and stern thrusters for easy manoeuvring
- EPEX Carbon/Technora sails by Elvstrom including their excellent vertical batten 'fat furl' mainsail
- Furling cruising gennaker by Elvstrom
- No-expense-spared interior spec, including washer-drier, second custom refrigerator, dishwasher and tropical aircon spec plus separate heating
- Bright, light interior in double-white treated oak

Основная информация

Тип судна: Cruising/Racing Sailboat

Модельный год: 2016

Год постройки: 2016

Страна: United Kingdom

Размеры

Длина общая: 54' 1" (16.48m)

Скорость, вместимость и масса

Водоизмещение: 2 Pounds

Вместимость воды: 159 Gallons

Объем топливного бака: 131 Gallons

Размещение

Всего кают: 3

Корпус и палуба

Материал корпуса: GRP

Цвет корпуса: White with dark blue stripes

Дизайнер корпуса: Frers Naval
Architecture

ПОДРОБНОЕ ОПИСАНИЕ

Detailed information

COMMENTS

SorayAnnis is a very highly specified Swan 54 designed for the easiest of short-handed sailing. Her main highlights are:

- Effortless powered in-mast furling for true single handed sailing
- Variable draft - daggerboard and twin rudders reducing draft to just 1.4 metres (sailing draft 3.7 metres)
- Bow and stern thrusters for easy manoeuvring
- EPEX Carbon/Technora sails by Elvstrom including their excellent vertical batten 'fat furl' mainsail
- Furling cruising gennaker by Elvstrom
- No-expense-spared interior spec, including washer-drier, second custom refrigerator, dishwasher and tropical aircon spec plus separate heating
- Bright, light interior in double-white treated oak

HULL & APPENDAGES

General

Scantlings, materials and workmanship throughout are consistent with the construction of a light hull, but without any sacrifice of strength or stiffness.

Hull Laminate

Foam cored sandwich glassfibre reinforced vinylester laminate for the topsides and a single skin glassfibre reinforced vinylester laminate under the waterline.

Stiffening

All stiffeners are unidirectional glass layups. Stringers and web frames are pre-made hollow sections that allow them to be used for ventilation purposes or as cable conduits. Engine bed is of GRP with steel inserts. Special care is taken to assure rigid foundation and proper adhesion to hull.

Structural bulkheads are marine plywood with GRP reinforcements. They are laminated to hull and deck.

The stainless steel main shroud chain plates are bonded to the hull.

Hull Finish

Gelcoats are of weather-resistant NGA type.

Hull colour to be standard white NGA 9650.

Hull stripes to be standard darkblue NGA 7344.

Bottom treatment with four layers of Gelshield epoxy primer and two layers of antifouling.

Antifouling colour to be darkblue.

Keel

The keel is a lead casting with antimony and carefully finished to accurate shape. Cast-in keel bolts are of high-tensile stainless steel.

Daggerboard keel and twin rudders, instead of standard, including two electrical bilgepumps with manual and automatic control.

Steering System

Carbon fibre steering wheels with five single spokes, 1000 mm, instead of standard.

The rudder is of foam filled GRP with tapered hi-tensile stainless steel stock, supported by two self-aligning bearings. Weed deflector in front of rudder.

Sheaves provided with guards to prevent jamming of steering wire. Aluminium quadrant with end stops bolted to rudder stock.

There are composite pedestals with roller bearings and brake.

Emergency tiller stowed in lazarette.

Mast step

The mast is stepped through the deck onto a composite mast step. There are tie rods from the mast collar. The mast shoe is aluminium.

Through hull fittings

All the through-hull connections below waterline are sea cocks of bronze, finished flush with outside and located in an accessible position. The inboard side of the sea cocks will be fitted with a stud long enough to take two hose clamps. The only exception to this is the galley refrigerator through hull, which has a cooling coil and is non flush.

Transom

The lazarette is separated by a watertight bulkhead from the interior.

Note: At no time should gasoline be stowed in the lazarette or anywhere inside the boat.

The transom folds out to form a full sized platform with fittings for a bathing ladder. Helmsman's seat is integrated in the transom hatch. The platform is operated by electrical cylinders.

Hull Windows

Additional hull windows, 2 pairs, in saloon, with manual operated blinds.

Boarding ladders

Foldable carbon fibre gangway with teak walking surface, including padded stowage bag, spreader bar, stanchions and line and one female deck fitting in stainless steel.

DECK

General

Scantlings, materials and workmanship throughout are consistent with the construction of a light deck without sacrificing strength or stiffness.

Laminate

Deck is of sandwich construction, using multiaxial glass fibre reinforced isopolyester laminate, with low-density closed cell foam core, and is bonded to the hull. High-density core or solid laminate is under deck fittings. Unteaked deck surfaces will have a white gelcoat finish.

Deck colour

Deck colour to be standard white, NGA 7344.

Colour of single stripe to be dark blue, NGA 7344.

Teak woodwork

Teak on coach roof, nominal thickness 9 mm.

The teak deck consists of 45 x 9 mm quarter cut teak battens with 4 mm black Sikaflex 290 caulking. Nominal thickness, on side decks, on bathing platform and on cockpit sole and seats. Vacuum packed and bonded to the deck with epoxy adhesive with screws only in hatch frames and bonders. The teak toe rails are 35 mm high. Two removable teak footrests for helmsman are mounted behind the steering wheels.

Canvas work

Bimini, frame divided for easy stowage, Sunbrella material, colour from Nautor's standard collection.

Sun awning from mast to backstay, with foldable sides, Sunbrella material, colour from Nautor's standard collection.

Canvas covers for steering wheels and pedestals, Sunbrella material, colour from Nautor's standard

collection.

Cockpit cushions with backrests forward of steering wheels, Sunbrella material, colour from Nautor's standard collection.

Drum winches

Two Lewmar 55 EST Evo electrical main sheet winches in cockpit

Two Lewmar 65 EST Evo electrical primary winches in cockpit

All halyards and control lines are led down to the main sheet and primary winches in the cockpit.

Anchor windlass

The Swan 54 has a stainless steel Lewmar V4, 24 V windlass with gypsy only for 10 mm Lewmar Grade 40 chain and one remote control in the bow locker.

Bow fitting and anchoring

Stainless steel stemhead fitting has Delrin anchor rollers and an eye for the gennaker tack line block. Stainless steel chain plates, headstay recessed with trough deck furler. Main shroud chain plates bolted to reinforced web frames. Backstay chain plates attached to hull structure.

Deck fittings

Outboard bracket on pushpit.

Folding cleats, model Aqualine Wing Cleat 280 or similar, 6 pcs, instead of standard.

Pulpit and pushpit, 610 mm high according to ISAF/ORC requirements, made of Ø 25 mm stainless steel tube.

There are three pairs of mooring cleats, 400 mm, installed one pair forward, one pair amidships and one pair aft.

The spacing of the lifelines and stanchions are conforming to ISAF/ORC requirements. Stainless 5 mm wire lifelines with polished turnbuckles and eyes. Lead through 610 mm high stainless steel stanchions. Gates in lifelines on each side amidships and in the pushpit.

Other:

- One socket for flagpole on pushpit
- Five Wichard 6504 folding padeyes for jackstay attachment in the cockpit and two on the side decks
- One Wichard 6506 folding padeye for inner forestay attachment
- One Wichard 6505 folding padeye for staysail tack
- Two Wichard 6505 folding padeyes for mainsheet block attachment mounted each side of

the companion way hatch.

- Five Wichard 6504 folding padeyes in cockpit for safety lines
- Two boarding ladder fittings, one pair mounted each side at lifeline gates

Sail handling systems

Tracks:

- Two aluminium jib sheet tracks
- Two genoa cars with adjustable pin stops
- Two high load track end stop.
- Two impact end stop

Blocks:

- Two 100 mm main sheet blocks on coach roof side by side.
- One 100 mm single block aft and one double 100 forward on the boom for main sheet.
- Two 100 mm single blocks on forward end of the boom, for mainsheet to be led down to deck on starboard and port sides
- Ten 100 mm mast base blocks recessed at mast
- One snatch block for tack line, to be used on the eye on the stemhead fitting
- Two 100 mm gennaker sheet/runner blocks, mounted on each side forward of the pushpit
- One 60 mm, single block under deck at stem head for furling line
- One 60 mm stand-up block aft on port side for furling line

Jammers and clutches:

- Two Antal DVJ high load jammers for jib halyard, mounted one each side on cockpit coaming
- Two Antal Plus jammers for gennaker halyards, mounted one each side on cockpit coaming
- One Antal Plus jammer for staysail halyard, mounted on port side on cockpit coaming
- Two Antal Plus jammers for reef lines, mounted one each side on cockpit coaming
- One Antal DVJ high load jammer for main halyard, mounted on starboard side on cockpit coaming
- Two Antal Plus jammers for the Jib sheets, mounted one each side on cockpit coaming.
- Two Antal Plus jammers for the mainsheet, mounted on each side on cockpit coaming in front of the aft winches.
- One Antal Plus jammer aft on port side for furling line

GRP mouldings and vents

- Sprayhood recess

- Storage locker in cockpit
- Two halyard lockers in each side of cockpit coamings
- LPG locker in aft part of port cockpit coaming

Hatches and windows

All hatches are supported by gas cylinders.

Deck Hatches:

- One Lewmar flush Size 30 above port aft cabin
- One Lewmar flush Size 30 above galley
- Two Lewmar flush Size 70 above saloon
- Two Lewmar flush Size 70 above owners cabin
- Two Lewmar flush Size 41 above forward shower and toilet
- Two Lewmar flush Size 41 above forward guest cabin

Teak-covered Hatches:

- One hinged hatch to forepeak locker
 - One hinged hatch to lazarette
 - One hinged stowage locker in cockpit with space for LPG
-
- One hinged hatch in cockpit to starboard storage locker

Portholes:

- Two openable tinted acrylic portholes in coamings, flush mounted, one in port aft head, one in galley
- One Goyot Cristal 40.24R openable tinted acrylic porthole, flush mounted with aluminium frames, from port aft cabin to cockpit
- One Goyot Cristal 40.24R openable tinted acrylic porthole, flush mounted with aluminium frames, from starboard storage space to cockpit

Parasol grey deck house windows. The windows are chemically toughened, laminated and glued to the superstructure. There are four windows, two on each side.

The lockable companionway has a manually operated sliding hatch of tinted acrylic drop board.

Cockpit

Two seats with back rest on each side. Helmsman seats integrated into transom hatch and coamings.

Fixed varnished teak cockpit table with folding leaves

INTERIOR

General

Interior wood is oak with double white treatment, and satin varnish finish instead of standard:

- Cabinets, tables, bureaux, seats, dressers have rounded corners
- Doors, partitions and panelling are oak-faced plywood
- Self-engaging latches with bumpers to hold doors in open position
- Hanging lockers are equipped with rods and hooks
- Drawers are secured with latches

Crew covers for mattresses, Sunbrella material, colour from Nautor's standard collection.

Bedding for aft cabin port in white plain 100% cotton.

Spring mattresses for all cabins instead of standard foam. Split spring mattresses with large top mattress for all berths.

Fitted sheets from Pratesi collection, with elastic band on the underside.

Grooved floorboards in oak with double white treatment instead of standard.

Headboards in forward cabin and forward amidship cabin upholstered in fabric from Nautor's standard collection.

Crew covers for sofas and chairs, Sunbrella material, colour from Nautor's standard collection.

Clock, model Barigo Viking 611CR/9519020236K in polished chrome, 2 pcs.

Barometer model Barig 111CR-9519020238, 1 pce, in polished chrome.

Installation of customer supplied crockery and cutlery in drawers and cupboards.

In all cabins: two reading lights, Hobart LED with switch, chrome 10-30VDC above double berth, two recessed Frensch F-19 and three outboard pointing Frensch F-7 spotlights in overhead. Hanging lockers are equipped with rods, hooks and automatic lights.

Finish

All joiner work in the living area is done in accordance with the best yacht practice, using first-grade materials. Oak with satin varnish finish is used for the visible woodwork. The companionway has non-slip steps.

Overhead panels

Vinyl covered removable overhead panels are installed in all accommodation areas.

Floorboards

The floorboards are of 15 mm plywood and the top face is oak with routed grooves to simulate planks. The floorboards are varnished with six coats of urethane varnish and have the same satin finish as the rest of the interior. Two suction lifters will be provided.

Folding pipe berth including mattress in storage space.

Topsides

Topsides where visible are lined vinyl covered.

Cabin door hardware

Hardware and outfit components are of a type designed to eliminate rattling or hanging. The cabin doors are provided with double action locks and with catches to hold them in open position where possible.

The door to owner's cabin is lockable.

Locker door hardware

All locker doors are fitted with high quality furnishing hinges and are kept closed with push button latches. A doorstopper will be fitted where needed.

Mirrors

All bathroom mirrors are glass.

Blinds and screens

Mosquito screens and blinds for all deck hatches. Mosquito screen for the companion way.

Hand rails

Hand rails at companion way and in saloon overhead.

Structural bulkheads

Structural bulkheads are of marine plywood with GRP reinforcements.

Forward Cabin (Owner's cabin)

The owner's cabin has a double berth on centerline. Two drawers are under the berth and hanging lockers on each side aft. There is a locker on centerline, with a mirror on the bulkhead above the locker. There is a book shelf on forward bulkhead.

Hull side is exposed beside the berth and is covered with white vinyl covered panels.

The bed is fitted with three oak plywood leeboards.

The door to owner's cabin is lockable.

Forward amidships cabin (Guest cabin)

Double berth outboard and hanging locker forward. Upper lockers are outboard.

The bed is fitted with one canvas lee cloth. Three drawers are under the berth.

Aft Cabins

There is one aft cabin with double berths on port side aft. Hanging locker with drawer on lower part located forward of the berths. There are upper lockers outboard. Hull side is exposed outboard and will be covered with white vinyl panel.

On starboard side aft there is a large storage space with entrance through door in the galley. The

storage has lockers with space for the optional generator and washer/dryer.

Leather details according to the following:

- cabin door handles with leather
- leather pulls for drawers and hanging lockers (except galley and bathrooms)
- leather upholstery on dining chairs

Leather from an offered Nautor collection.

The beds have foam mattress 12.5 cm (5") plywood bottoms. The beds are fitted with a teak plywood leeboard. There is storage under the berths.

Saloon

U-shaped settee is on port side, with a rectangular dining table and two chairs. The navigation station is on starboard side. Outboard lockers or hull windows are optional on both sides. A teak handrail will be installed in the overhead.

Canvas cover for saloon table, Sunbrella material, colour from Nautor's standard collection.

Tray in oak, double white treatment, varnished placed on top of AC fancoil access hatch in Saloon starboard.

Cut-out for bottles and glasses according to customer supplied items.

Throw pillows in Sunbrella material according to styling proposal dated 23 March 2016, size 45x45 cm.

Place for entertainment electronics located outboard on starboard side.

U-shaped settee at dining table will have a depth of 500 mm. Stowage under sofa and behind backrests outboard.

Six recessed Fensch F-19 and five outboard pointing Fensch F-7 spotlights in overhead. Two recessed Fensch F-19 lights above saloon table. One Fensch F-7 and one Fensch F-4 at chart table.

Galley

Lockers and bulkheads are oak. Corian Glacier White for galley tops.

One stainless steel sink with one kitchen faucet, the model is Hansgrohe Talis S. Additional

Quooker boiling water tap.

There are lockers and drawers for utensils. Lockers with sliding doors are mounted outboard of the stove.

Two recessed Frensch F-19 (one light can also be used as a leading light) and two outboard pointing Frensch F-7 spotlights in overhead. There are two Frensch F-7 lights above the sink and one Frensch F-19 night light.

Kitchen paper holder in galley, 1 pce, model Vola.

Domestic appliances:

- Protected space for a Force 10, 3-burner gimbaled LPG stove, with oven protected by stainless steel guard
- One front loaded refrigerator, 142 l (5.0 cu.ft)
- Additional custom front loaded refrigerator 125 l
- One top loaded freezer, 63 l (2.2 cu.ft)
- Waste bin under sink

Navigation Area

The navigation area is located in the saloon on starboard side with instrument panels facing forward.

The chart table is made of oak. There are drawers and a shallow storage space under the table top.

Navigation seat in Penelopeggi Nuvola 218 leather instead of Nautor standard fabric.

There is space for electronics in the panels.

Toilets, showers general

Owner's head with bidet shower and separate shower stall forward on starboard side. Guest head aft on port side, with bidet type shower.

There is white GRP lining up to wash basin level. Glacier White Corian wash basin and counter top. Hot and cold water mixing tap also serving the shower.

Faucets at wash basin in both heads, and shower set in forward shower.

Glass mirrors on bulkhead or upper cupboard doors.

General lighting will have spotlight down lighting.

One soap dish in each head.

Additional toilet rail holders in each head, 2 pcs, model Hansgrohe.

Additional towel hooks in bathrooms, 6 pcs, model Hansgrohe.

Hanging rail in aft bathroom, 1 pce.

Engine room

Engine room is located under the companion way. Removable front part of engine box, service hatches each side. Electrical switchboard and main switch locker starboard side.

ENGINE & HYDRAULICS

General Engine space is internally sound insulated.

Engine

The engine is a Yanmar 4 JH 110CR, with ZF25A gear and a 3-bladed folding propeller. Engine and reduction gear are supported on flexible mounts.

Thrusters

Bow thruster, Side-Power SRLP170 DC powered.

Stern thruster, Side-Power SRLP100 DC powered, swing type. Variable speed control. Powered by separate 24V battery bank for bow thruster and separate 24V battery bank for stern thruster.

Propeller shaft

Shaft is a Aquamet 22

Gear is a ZF25A

Reduction is 2.714:1

Propeller

Three-bladed folding propeller.

Cooling system

There is a thermostatically controlled fresh water cooling system which has a heat exchanger for the engine. A separate heat exchanger for the consumable fresh water is included in the same circuit making hot water available whenever the engine is running. There is a Seawater intake with strainer. Discharge through exhaust system.

Fuel system

The feed line to the engine is equipped with 10 mfuel filter/water separators with water alarm. Dual version mounted for main engine to permit uninterrupted running of the engine while changing filter elements. All flexible hoses are according to ISO7840.

The fuel capacity is 495 l (130.7 USg), in three stainless steel tanks with gauges. One filler line with valve group for each tank. Tanks vented to hull, just below the shear line. Fuel filter/water separator with water alarm and shut off valve on feed line to engine.

Exhaust system

The Halyard wet exhaust system has fibreglass silencer type HEE for main engine. Vetus NLP silencer gas/water separator type Vetus LGS installed for diesel generator. Water is discharged below the waterline and exhaust gases from main engine and diesel generator exit under the transom. Silencers are provided with a drain tap.

Oil handling system

Reverso GP3312oil drain pump for the main engine.

Engine controls

Cockpit starboard coaming:

- Engine control ON/OFF
- Start and stop buttons
- Single lever control of throttle and gear shift
- Engine instruments

- Control light for starting and service battery charging
- Coolant temperature with alarm
- Oil pressure with alarm
- Tachometer with hour meter

Firefighting system

There is a total flooding Clean Agent (FM200) fire extinguishing system for engine room space and generator engine room, with manual remote control.

Hydraulics

Manual hydraulic functions for the rig:

- Boom vang
- Out haul
- Backstay tensioner

PLUMBING AND VENTILATION

Components and valves are labelled. Sea water hoses are of reinforced PVC tubing, fresh water hoses mainly of nylon tubing. Water tanks of stainless steel provided with baffles, inspection cover, sounding plug and vent pipe.

Fresh water system

A pressurised hot and cold water system will be installed. Fresh water piping's are of polypropylene, nylon and copper tubing.

Filler line on side deck is led to a valve chest. The valve chest has valves for each water tank and for water pressure pumps.

Hot and cold water will be distributed to all heads and to the galley.

Drinking water purifier.

Watermaker Sea Recovery Ultra Whisper 600.

Sea Recovery Ultra Whisper 600 with a capacity of 95 l/h. The low pressure pump is located in starboard aft cabin. The water maker is provided with dual pre-filters, primary with 25 micron cartridge, secondary with 5 micron cartridge and fresh water flush with charcoal filter. The feed

water pump is self-priming. There is a remote control installed in galley.

Water boiler, Quooker PRO3-VAQ, 1600 W, 230 V, installed in galley.

City water connection, installed on port side coaming.

Fresh water outlet in the bow.

Hot and cold pressure water with back-up foot pump for cold only in galley. The water capacity is 684 l (180.6 USg), in four tanks with gauges.

There are single lever mixing faucets for washbasins and galley sinks. The consumable water can be heated either with engine cooling water, or with a heating element working on AC.

Water pressure system equipped with one Headhunter X-Caliber 24VDC pump, capacity 38 l / min.

There is a hot water tank, Isotemp 50 l (13.2 USg).

Sea water system

Sea cocks of bronze for all through-hull connections below waterline located in accessible position. Inboard side of sea cocks fitted with stud long enough to take two hose clamps.

Sea water is used for toilet flushing

Grey water system

Wash basins in all heads and the galley sink are drained directly to sea cocks. Shower trays are drained with an electrical pump to overboard discharge.

Black water system

All toilets are connected to black water holding tanks and sea cocks with selector valve in between for choosing to flush directly over board or into tank.

Two black water holding tanks are provided, one for aft toilet and one for forward toilets, capacity 62 l (16.4 USg) + 58 l (15.3 USg) with indication at 3/4 full and full. The tanks are fitted with

baffles, inspection covers, and vent lines.

The tanks can be emptied by 24 V electrical pumps to sea cocks via siphon breaks. Each tank is also provided with a deck suction line.

Jabsco PAR Quiet Flush toilets with electrical flush, 2 pcs, (37245-1094) instead of standard Jabsco Par

Manual (29120-3000).

The toilet flush by pressure using approx. 2,5 l fresh water per flush. The function cycle is completely automatic. The high performance turbine pump enables a complete fragmentation of the organic residues.

Additional weight 28 kg.

Drainage system

Deck drains will be connected mainly to outlets above waterline.

The galley sink and washbasin drainage is through sea cock. Shower trays drained with electrical pumps to sea cocks.

There are three separate bilges, i.e. fore peak, amidships and lazarette bilge. Fore peak bilge is equipped with a DC driven submersible pump,

ca. 100 l/min. Main bilge is equipped with a DC driven submersible pump, ca. 140 l/min. Lazarette is equipped with a DC driven submersible pump,

ca. 100 l/min.

Two manual Whale Titan pumps, one in cockpit and one in saloon, ca. 100 l/min, are installed as back-up pumps, one for main bilge, lazarette bilge with selector valve and one for main bilge, engine room with selector valve. One manual Whale Urchin pump, ca. 55 l/min installed for fore peak drain.

Special attention is paid to ensure that bilge pump suction pipes are mounted in easily accessible positions to allow debris to be cleared. All outlets are mounted about the waterline.

All deck drains, that cannot be direct over board, are connected to integrated through hull fittings on each side.

LPG system

A manual leak detector and a remote magnetic shut off valve are placed inside the gas bottle locker. There is also a manual gas shut off valve in the galley.

Space for two 6 kg aluminium gas bottles in a drained locker in helmsman seat. LPG is used for the gas cooker in galley.

Gas installation according to ISO 10239

LPG adapter kit. Adapter/connection kit for transitions and connections to the most common LPG bottles in

Europe. Hose connectors and a 30 mbar pressure reducer included.

Ventilation

Natural ventilation in saloon and in the cabins is by open able deck hatches and portholes. Exhaust blowers in galley and heads.

Galley extractor EBM fan is in lazarette.

Two air inlets through steering pedestals and lazarette, outlet with a thermostat controlled blower to the transom.

The service battery box is ventilated with a thermostat controlled blower through mast to the outside of the yacht.

Air conditioning, MarineAir variable capacity chiller unit which maximizes the chiller efficiency and reduce electrical load fluctuations. 230V, 50/60Hz, 1ph, 6,5kW.

Total capacity 41000BTU / 12kW with reverse cycle heating in all cabins.

MarineAir's chilled water air conditioning system consist of the chiller, located in the lazarette, that cools (or heats) fresh water, then pumps it through an insulated piping loop to air handlers located in the living spaces, where the air is cooled (or heated).

Effective air distribution system in all cabins. Warm cabin air is drawn into the air handler through a return-air grille. It is then cooled and blown through a flexible insulated duct and back into the cabin through a supply-air grille installed high in the cabin.

Supply-air grille installed away from the return-air grille to ensure good circulation in the cabin.

NOTE: Diesel generator needed to run the air conditioning system off dock.

Climate control

Eberspächer Hydronic diesel heater working together with the air conditioning system for heating the yacht.

Diesel heater and heat exchanger to be installed in the lazarette. Additional weight 42 kg.

Refrigeration system

There are two battery-driven 24 V refrigeration units with thermostat control for the refrigerator and the freezer. The freezer can also be used as a refrigerator.

There is one Isotherm SP2554 compact compressor for refrigerator and one Isotherm Magnum 2511 compressor for the fridge.

ELECTRICAL SYSTEM

General

The electrical components are chosen based on the Yards long experience in the yachting industry. Electrical diagrams will be delivered with the yacht, for both DC and AC. Cables are labelled with identification numbers at both ends.

At watertight bulkheads wires are run up to deck head height when penetrating the bulkhead or are sealed in place to produce water tightness.

24 V DC system with insulated return. 230 V AC is a three-wire grounded system. Wires are sized to minimise voltage drop. For lightning protection the headstay, backstay (unless used as SSB antenna), main shroud chain plates and mast step are grounded to ballast keel bolts with heavy cable.

AC System

The AC system is a 230 V 50 Hz single-phase three-wire AC-system.

The AC system can be fed by 230 V 50 A shore power inlet.

Shore inlet provided with polarity alarm, main switch and land connecting cable. Outlets provided with earth fault protection. There is connection to battery charger and water heater resistor element.

One Mastervolt, Mass 24 V 80 A charger with 3-step charge characteristics for service battery. There is temperature sensing at the battery.

The service batteries are charged by a 110 A alternator with three step regulation on the main

engine, or by a 80 A Mastervolt ChargeMaster battery charger working on AC. 80 A engine alternator for the starting battery.

Diesel generator Fischer Panda 10000 PMS, 8,0kW/9,4KVA (continuous 7,2kW), 230V 50Hz, 3000 rpm. Installed in aft sb cabin.

Generator room is insulated and fire protected. Firefighting system and ventilation system to be installed in generator room. Exhaust sytem for generator to be installed. Fuel system and sea water system to be modified to suit generator installation. Electrical system to be modified to work together with generator. Additional weight 522 kg.

Inverter 24V/2500VA, output 230V 50Hz. Transfer switch included.

Outlets AC:

- 230 V outlets of schuko type
- One double outlet in saloon, at chart table and in cabins
- Single outlets in the heads
- Two double outlets in the galley.

Additional 230V double outlets in interior, totally 4 pcs:

- in owner's cabin, port side

- in owner's cabin, starboard side

- in galley

- in saloon, port side.

UK type of outlets.

Earthing system

The AC system is using the keel as underwater earthing point.

Mast and shrouds are electrically connected to keel.

DC System

Battery parallel switch for engine and generator batteries.

2-pole 24 V insulated return DC-system for lighting, blowers and pumps. Wires are sized to minimise voltage drop. A voltage stabilizer for instruments with two 12 V 10 A batteries is installed. The engine has an own AGM starting battery 50 Ah 12 V. Battery located in ventilated

GRP boxes.

The service battery bank is 24 V 522Ah / 5 h rating (626 Ah / 20 rating) and consists of 12 single cells of 2 V each. The model is Enersys 6 PzV 522. The batteries are of Enersys maintenance-free gel type.

The bank is for the lights, blowers, pumps and electronics. The battery bank is located in a ventilated GRP box in the fwd cabin.

One 24 V 110 A Mastervolt alternator with 3-step charge characteristics on the main engine for service battery bank.

12 V DC outlets installed one at chart table, one on mast and one in cockpit.

Plumbing and monitoring system

Alarms are presented at main switchboard in galley.

- Black water tank levels high
- Black water tank levels full
- Water in fuel separators
- Bilge pump run, saloon, forepeak and lazarette

Black water tanks are equipped with $\frac{3}{4}$ and full tank alarms in galley. Tank level switches made by Sealand.

The bilge pump in saloon can be operated in manual or automatic mode. The automatic mode is controlled by a GEMS LS-270 level switch next to the pump.

The gas supply to the gas stove is operated by a switch near by the stove, which controls a solenoid valve at the gas bottle.

Water tank levels are shown at main switchboard in galley. Tank level sensors are made by VDO.

The fuel tanks levels are shown at the main switchboard in the galley.

Tank level sensors are made by VDO.

In the galley on the main switchboard functions are indicated of the following:

- Black water pumps run
- Water pressure pumps run
- Engine ventilation run

Level metering:

- Water tanks
- Fuel tanks

Engine DC

There is a 12 V battery for the main engine with a capacity of 50Ah/20h, model Optima RedTop.

The battery is of maintenance free AGM type.

One 12 V 80 A alternator on main engine for engine starter battery.

Instrument power supply

The radio and instrument power supply is by service battery. There is a voltage stabilizing battery for the navigation instruments and communication system.

Ventilation and heaters

Hella Turbo fan, 1 pce in Master cabin, 1 pce in saloon and 1 pce in galley.

Galley fan is controlled with an on/off switch in the galley.

Thermostat controlled fan in engine room and in battery boxes.

Electrical panels

AC and DC panels:

The galley is provided with a clear anodized main switchboard. The AC and DC voltages and consumptions of the yacht's main systems can be monitored on this panel. The panel is also equipped with indication for alarms, see 06.05.10.

- Switches of trip-free circuit type
- AC system monitor displaying V, A and frequency
- Battery monitor of digital type displaying V, A and Ah
- Switches for interior and navigation lights
- Fuel tank level gauge with selector switch
- Water tank level gauge with selector switch
- In separate locker near main switchboard:

- Main switch and fuses for engine and generator DC
- Earth fault test panel
- Service main switch box located in owner's cabin
- Main switch and fuses for AC

Cockpit panels:

- Engine control
- Navigation light control

There are switches for mast and boom lights, dimmer for compass lights.

Domestic appliances

Selected appliances are of high class and well-known brands.

There is battery driven refrigeration unit with separate thermostat control.

There is a battery driven freezer unit with dual function thermostat, enabling freezer to also be used as a refrigerator.

There is a stainless steel three-burner gas stove Force 10 with oven and grill, gimballed and provided with fiddles. There is flame failure protection on burners. Manual gas shut-off cock adjacent to stove. Remote controlled shut-off and leak detector near gas bottle with control switch. The gas installation is according to ISO 10239.

Microwave oven in galley, Siemens HF15M541, 230V, stainless steel.

Washer/dryer Miele WT2789 WPM, in SB aft cabin, aft of engine.

Dish washer, Siemens SK25E200EU, installed in galley in upper locker aft of oven.

Extra fridge. Capacity approx. 125 l. Fridge located under counter in galley instead of lockers.

Cordless vacuum cleaner Electrolux Rapido ZB6114BO. Additional weight 3 kg.

Lights

Every cabin has switches for lighting in cabins and toilets. All spotlights are of LED-type unless otherwise stated.

Overhead lights:

- Frensch F-19 LED lights inboard in all cabins and toilets
- Frensch F-7 LED spotlights outboard in all cabins and toilets

Dimmer for overhead lights, 1 pce in master cabin, 1 pce in saloon, 1 pce in galley and 1 pce over navigation area.

Reading and table lights:

- Hobart LED with switch, chrome 10-30VDC reading lights above double berths
- Frensch F-19 LED lights above vanity desk
- Frensch F-19 LED lights above saloon table
- Frensch F-4 LED light with 300 mm long arm at chart table

An automatic light is installed in all hanging lockers.

Under water lights, 2 pcs, installed at aft end of the yacht and 2 pcs installed midship. Model Aqua Luma GEN III 12 series, 24V ultra blue LED color. Additional weight 8 kg.

Switches for underwater lights. For midship pair, 1 pce, and for stern pair, 1 pce.

One wall light on main bulkhead in saloon, port side.

Magnifying mirrors Astro Niimi Round 0760, 3 pcs, with built in LED light.

Navigation lights on deck:

- Stern light LED Lopolight
- Port side light LED Lopolight
- Starboard side light LED Lopolight
- Navigation light switch is located on cockpit panel

Navigation lights on mast:

- Steaming light on forward side of mast, controlled from cockpit panel
- Anchor light at top of mast, controlled from cockpit panel
- Tricolour light at top of mast, controlled from cockpit panel

Two spreader lights, facing down on 1st spreader, controlled from cockpit panel

Windex light at top of mast, controlled from cockpit panel

One boom light controlled from cockpit panel

Compass light with dimmer, controlled from cockpit panel

LED light in engine room

Red night light in overhead in galley, Frensch F-19 LED

ELECTRONICS

Magnetic compasses

There is one Silva 125FT magnetic steering compass at each steering console.

Sailing Instruments

Upgrade of standard B&G Triton sailing instrument system to B&G H5000 Hydra Package, including B&G

H5000 CPU Hydra, RC42 Rate compass, two Graphic Displays installed on deck, close to each pedestal and one Graphic Display installed at navigation station.

B&G H5000 20/20 HV displays, 2 pcs, mounted on mast, carbon fiber instrument bracket included.

Upgrade of B&G H5000 Hydra Package to Hercules.

B&G Barometric pressure sensor.

B&G Zeus² 12-inch multifunction displays, one on each pedestal in cockpit, connected to B&G H5000 Hydra system and Hercules system.

Sensors:

- One combined depth/paddle wheel speed sensor, located on starboard side in front of keel, housing in plastic
- Wind sensor at mast head

Navigation systems

B&G Broadband 4G 36 nm radome antenna, integrated with the optional B&G Zeus² navigation system.

Antenna installed on bracket in front of mast.

B&G Zeus² Glass Helm CPU Black Box System with ZC1 Controller and ZM19T 19" display at navigation

station. GPS antenna included. System connected to optional B&G H5000 Hydra package or Hercules package.

Class B AIS transponder, Simrad NAIS-400 including GPS and VHF antenna splitter, Simrad NSPL-400

system. System is connected to optional B&G Zeus², nav station FM radio and VHF antenna on mast top.

GPS antenna positioned on pushpit.

Navtex receiver Furuno NX-300 connected to RR Delta antenna. Dual frequency receiver (490,518 kHz).

Converter and navtex filter for RR Delta antenna is included.

Communications Systems

Yachtspot Internet Wi-Fi system. Searches for public "hot-spots" and broadcasts them onto the yacht's wireless local area network (WLAN). Includes Yachtspot and Linksys wireless router and WLAN antenna, AC Marine CEL24. Antenna position on mast.

Fleet Broadband, KVH FB250 compact dome satellite telephone system with handset positioned at the navigation station. Data interface connected to onboard computer. Antenna position on mast.

VHF radio B&G V90 with two wired handsets, one at the navigation station and one at the steering console, with intercom possibility between the two. Radio includes built in AIS receiver.

Entertainment Systems

Upgrade of standard Fusion MS-RA205 to Fusion MS-AV750 (AM/FM, CD, DVD, Bluetooth, connected to optional B&G 19" screen at nav station for video entertainment.

LED mirror TV 32 inch, MirrorMedia MT32TNE-TTS, installed in owner's cabin on forward bulkhead instead

of standard mirror, port side using a fixed surface mount fitting. Blu-Ray player Samsung BD-J75000 installed in owner's cabin port side upper locker, forward of hanging locker. Additional weight 19 kg.

Bose Wave SoundTouch IV music system 2 pcs, positioned in saloon and owner's cabin. Fitting for customer supplied Bose Wave SoundTouch IV music system 1 pce in guest cabin. Additional weight 5 kg/speaker.

Autopilot systems

B&G H5000 autopilot, connected to optional B&G H5000 system. Autopilot controller close to starboard pedestal.

Aerials

A B&G ZG100 GPS antenna is mounted on the port lower pushpit rail.

Active antenna, RR Delta Biscaya for terrestrial TV, FM radio and VHF, instead of standard VHF antenna. Includes DC/DC converter.

Computer systems

Mobile printer, HP Officejet 150 Mobile. Delivered loose with yacht.

Compact computer, Dell Optiplex Ultra Small Form Factor connected to 19-inch plotter LCD display.

- Operating system: Windows 10 Professional (64Bit)
- Software: English Microsoft Office 2016 Home and Business
- Keyboard/mouse: Logitech MK520 Wireless Combo UK
- Computer installed in a ventilated area. Final version of operating system to be confirmed.

Security systems

GSM based tracking system (Europe/USA), Pilotfish c-pod. Allows tracking of the boat from ashore.

Magnetic intrusion sensor installed on main entrance hatch and siren installed in saloon. Connected to

C-pod tracking system. Siren will sound if main entrance hatch is opened when alarm is activated. Additional weight 1 kg.

Safety systems

EPIRB with a built in GPS and automatic release bracket, McMurdo G-5-A Smartfind plus GPS 406/121,5 MHz, on pushpit.

There is a Marco EW3 24 V foghorn.

MAST & RIGGING

General

Spars are built of extruded aluminium, white painted with measurement bands in black. There is a double spreader 15/16 fractional rig, with discontinuous shrouds and 20 degrees swept aluminium spreaders on a wide shroud base.

IM = 21.93 m J = 5.95 m P = 20.08 m E = 6.70 m

Mast

Antenna bracket for AC Marine CEL24 WLAN antenna.

Seldén aluminium, seamless, white painted, electrical furling mast 24v, aluminium spreaders and boom instead of standard Seldén aluminium mast and boom.

Including push buttons for sail furling close to starboard pedestal, spreader up-light, extra boom light and mast jack with pump.

Bracket and installation of Fleet Broadband or mini VSAT antenna on spreader.

Oval section with external stemball tangs and tapered top section of the mast. Preparations for full-battened mainsail (battcars to be supplied by sailmaker), all halyard exits smoothed for rope halyards equipped with stainless steel chef guards. High load sheaves for:

- Main halyard with termination for 2:1 halyard
- Two side by side jib halyards at hounds
- Two masthead over/under spinnaker halyards with anti-chafe gear

Internal wiring secured to mast. Battery ventilation connections to be provided near mast lower end. Neoprene mast boot with Dacron cover over deck partners, four stainless steel folding mast steps.

Boom

White painted aluminium section, for a loose footed mainsail, with clew strop (to be supplied by sailmaker). Boom to include:

- Sheaves at outboard end for two single line reefs led to deck winches.
- Sheave for outhaul powered by Internal hydraulic cylinder
- Provisions and blocks for the German mainsheet system

- Preparation for three leg lazy jack system.
- One boom light
- Port and starboard mounted folding padeyes for preventer at outboard end

Standing rigging

Nitronic 50 rod rigging. Trough deck manual furler for the jib, control line led under deck to cockpit.

Furlers

Electrical Jib Furler TD400E 24 volt, instead of standard manual TD400 including push buttons close to starboard pedestal.

Runningrigging

Ropes of Dyneema. Main halyard with screw shackle, headsail halyards and sheets with snap shackles. Internal halyards.

Description	Quantity	Material	Dimension
Main sheet	One	Dyneema	12 mm
Jib sheets	Two	Dyneema	14 mm
Gennaker sheets	Two	Dyneema	12 mm
Gennaker halyards	Two	Dyneema	12 mm
Jib halyards	Two	Dyneema	14 mm
Mainsail halyard 1:1	One	Dyneema	14 mm
Outhaul	One	Dyneema	14 mm

Single line reefs Two Dyneema 12 mm

Rig hydraulics

Anodized cylinders powered by triple system control panel in cockpit, to include:

- Boomvang
- Outhaul cylinder
- Two backstay cylinders

EQUIPMENT

Owner's Manual in English is provided in with directions for use and maintenance, drawings and diagrams for main systems and handbooks for machinery and components.

Anchoring and mooring

One Stainless steel 27 kg anchor

50 m 10 mm Grade 40 chain spliced to 50 m 16 mm plaited nylon anchor line

One boat hook

Additional mooring line, 16 mm diam, 20 meter.

Additional air fender, F3, 22 x 85 cm, each.

Additional anchor chain, Lewmar 10 mm, grade 40, 2 meter.

Mooring lines 20 m each, diameter 16 mm, 4 pcs.

Firefighting equipment

Fixed automatic fire extinguisher in engine room with manual release handle at companionway

Three portable extinguishers; one in saloon, one in owner's cabin and one on deck

Fire blanket in galley

Fire extinguisher, Powder 2 kg, 4 lbs, portable.

Please note: At no time should gasoline be stowed in the lazarette or anywhere inside the boat.

Safety equipment

Safety lines for deck

Safety belts for galley and navigation station

Spare parts

Basic spare parts kit for engine

Basic plumbing spares

Basic electric spares

Tools

Basic engine tool kits

Sailing gear

Four winch handles, two 10'' double grip and two 10'' single grip.

Other

Battery for Torqeedo Travel 1003S rib, 1 pce.

Life rafts, 2 pcs, Sea-Safe Pro-Light 6 persons Classic ocean navigation ISO 9650. Including grab bag with 6 l water. + 24 h life raft.

Diesel fuel 600 l.

One handle for opening deck hatches

Two suction lifters for floorboards

Sounding rods for fuel and water tanks

One Bosun's chair

Flag pole 134 cm

Stainless steel boarding ladder

SAILS

Elvstrom sail wardrobe in Carbon/Technora EPEX membrane construction

In-mast 'fat furl' furling mainsail with full-length battens

Furling 103% jib

Radial furling cruising gennaker in Contender Maxilite 150

Price may be changed without notice

Boat is offered subject to still being available

The particulars are believed to be correct but not guaranteed

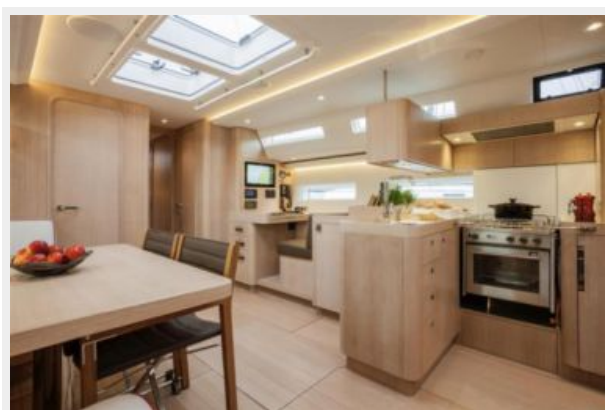
Исключения

При продаже яхты исключаются личные вещи владельца.

Отказ от ответственности

Компания предоставляет описание судна или яхты добросовестно, но не может гарантировать точность этой информации, а также не ручается за техническое состояние. Покупатель должен проинструктировать своих агентов или оценщиков исследовать представленную информацию более подробно, по собственному желанию. Продажа судна или яхты, изменение цены или снятие с продажи будет происходить без предварительного уведомления.

ФОТОГРАФИИ





КОНТАКТЫ

Андрей Шестаков (Andrey Shestakov) – ведущий яхтенный брокер отдела продаж яхт и судов компании Shestakov Yacht Sales Inc. Официальный представитель Shestakov Yacht Sales Inc. для русскоговорящих клиентов в центральном офисе компании в Майами/Форт Лодердейл/Флорида/США.

Контактная информация

Email: andrey@shestakovyachtsales.com

Web: shestakovyachtsales.com

Телефоны

Краснодарский край: **+7(918)465-66-44**

США, Майами, Флорида: **+1(954)274-4435**

Время работы

Понедельник – Суббота: **9:00 - 21:00**
EDT

Воскресенье: **Закрето**

Адрес



Harbour Towne Marina, 850 NE 3rd St,
STE 213, Dania, FL 33004