

NO NAME — AZIMUT



Builder: AZIMUT

Year Built: 2014

Model: Cruiser

Price: PRICE ON APPLICATION

Location: United States

LOA: 55' 0" (16.76m)

Beam: 15' 5" (4.70m)

Cruise Speed: 30 Kts. (35 MPH)

Max Speed: 35 Kts. (40 MPH)

Our experienced yacht broker, Andrey Shestakov, will help you choose and buy a yacht that best suits your needs **No Name — AZIMUT** from our catalogue. Presently, at Shestakov Yacht Sales Inc., we have a wide variety of yachts available on our sale's list. We also work in close contact with all the big yacht manufacturers from all over the world.

If you would like to buy a yacht **No Name — AZIMUT** or would like help answering any questions concerning purchasing, selling or chartering a yacht, please call **+1(954)274-4435**

TABLE OF CONTENTS

TABLE OF CONTENTS	2
SPECIFICATIONS	3
Overview	3
Basic Information	3
Dimensions	3
Speed, Capacities and Weight	3
Accommodations	4
Hull and Deck Information	4
Engine Information	4
DETAILED INFORMATION	5
Specifications	5
Exclusions	6
Disclaimer	6
PHOTOS	7
CONTACTS	23
Contact details	23
Telephones	23
Office hours	23
Address	23

SPECIFICATIONS

Overview

Azimut's styling is unmistakable. And it is delivered with such confidence and panache, especially in the S-class range. Look at those angles, the bold, reflective window shapes, that steely "Miami Silver" hull paint. From the snub nosed bow to the its sleek presence in the water, the S-class exudes the sharp and innovative lines we have come to expect from the Italian builder over the years.

Highlights: Miami Silver painted hull Bow thruster Aquascan Sprinter f11 Tender Stern thruster Teak flooring package - swim platform, all steps, cockpit, and side decks Passerelle option IPS joystick controls Cockpit BBQ Excellent condition Cockpit electric awning shade A/V system with KVH TracVision HD 7 Cruising speed of 30 kts. Dynamic positioning system with joystick control - Helm Interceptor automatic trim system Raymarine Electronics Package Only 600 hours Upgraded custom Leather decor

PRELIMINARY LISTING: More to come

Basic Information

Category: Cruiser

Sub Category: Express

Model Year: 2014

Year Built: 2014

Country: United States

Dimensions

LOA: 55' 0" (16.76m)

Beam: 15' 5" (4.70m)

Speed, Capacities and Weight

Cruise Speed: 30 Kts. (35 MPH)

Max Speed: 35 Kts. (40 MPH)

Displacement: 41440 Pounds

Accommodations

Total Cabins: 3

Total Heads: 2

Hull and Deck Information

Hull Material: Fiberglass

Hull Color: Silver

Engine Information

Engines: 3

Manufacturer: Volvo

Model: IPS 600

Engine Type: Inboard

Fuel Type: Diesel

DETAILED INFORMATION

Specifications

Highlights: Miami Silver painted hull Bow thruster Aquascan Sprinter f11 Tender included in the sale Stern thruster Teak flooring package - swim platform, all steps, cockpit, and side decks Passerelle option IPS joystick controls Cockpit BBQ Excellent condition Cockpit electric awning shade KVH TracVision HD 7 Cruising speed of 30 kts. Dynamic positioning system with joystick control - Helm Interceptor automatic trim system Raymarine hybridtouch electronics package Only 600 hours Upgraded custom leather decor

Hull and Decks: Painted Hull finished in Miami Silver Aquascan Sprinter f11 Tender included in sale Tender Haul and Launch system Custom LED lighting Teak - swim platform, steps & side decks Anchor washing system Chain counter Opecmare Teleopic gangway passarelle Stainless steel cleats Two-Sided Boarding Gates Bow Seating & Separate Sunpad Exterior Covers Washing System for Windlass Electric Searchlight Telescopic Mirror tinted windows

Cockpit: Teak flooring Docking station with joystick control Kenyon BBQ JL audio sound system Vitrifrigo refrigerator LED flood lights Electric awning sunshade Electric hi/low table with pedestals Sunbathing cushions (cushion stowage in engine room) Electric mooring winches Volvo IPS docking station with thruster control and engine display Battery switches Overhead lighting

Salon/Dining: Synthetic Wenge wood flooring Electric sofa with conversion capabilities to port Pop-up Samsung TV with DirecTV KVH TracVision HD 7 Bose surround sound system and stereo Massive glass sunroof Dining table with seating for (4) Huge windows with 360 degree views Smoke detector Carbon monoxide detector Chilled water air conditioning controls Triple Stainless Steel Sliding Salon Door Overhead lighting with Dimmers

Galley: Hideaway kitchen with retractable top (starboard location) Miele (4) burner electric cook top Stainless steel sink basin Vitrifrigo under counter refrigerator and freezer Miele microwave/oven Azimut Yachts Custom flatware and china **Helm/Electronics:** Dynamic positioning system with joy stick control Interceptor Automatic trim system Side power bow thruster Co-pilot helm seat by Techma (two cockpit chairs) 16" Raymarine GS Series 165 Chart and Data display 16" Raymarine GS Series 165 Super High Definition Color Radar Raymarine Open Array 48" Color Super High Definition Radar Raymarine P70R Auto Pilot Raymarine i70 Multi-function display Raymarine RMMK9 Control

Master Stateroom: Full beam master stateroom Massive windows to port and starboard Hidden Safe Leather décor Samsung Flat screen TV with DirecTV Blu-Ray player Bose Sound Bar Premium carpeting Overhead lighting Queen sized island berth Two seat dinette located on the port side underneath the window Large hanging locker Smoke detector Carbon monoxide detector Chilled water air conditioning controls

Master Head: Walk in shower with seating Zebra wood flooring Vetrofreddo black sink Tecma

Freshwater head

VIP Stateroom (Bow): Custom leather decor Samsung Flat screen TV DirecTV Blu-Ray player (2) Full height closets Full size, island berth Large hull windows Premium carpeting Smoke detector Carbon monoxide detector Chilled water air conditioning controls

Guest Stateroom: Custom leather décor Samsung Flat screen TV with DirecTV Blu-Ray player Full height hanging locker Twin berth beds Additional storage under beds Large hull windows Premium carpeting Smoke detector Carbon monoxide detector Chilled water air conditioning controls

Guest Head: Private entry from the VIP Stateroom, also accessible for all guests Ventrofreddo black sink Tecma Freshwater head

Crew Quarters: Air conditioned Single berth Crew head

Engine Room: (3) VOLVO Penta IPS 435 HP engines with POD Drives Kohler 18 kw generator Side power bow thruster Interceptor Automatic Trim System (4) Electric pumps 24V (1) supersub smart 650 electric bilge 24V (2) manual emergency pumps; 1 in engine room, 1 in owner's cabin Hi level alarms on display (6) connected batteries, (2 for each engine), 1 generator battery Electronic battery charger 50A (220 /110V)

Exclusions

Owner's personal belongings.

Disclaimer

The Company offers the details of this vessel or yacht in good faith but cannot guarantee or warrant the accuracy of this information nor warrant the condition of the vessel. A buyer should instruct his representatives, agents, or his surveyors, to investigate such details as the buyer desires validated. This vessel or yacht is offered subject to prior sale, price change, or withdrawal without notice.

PHOTOS

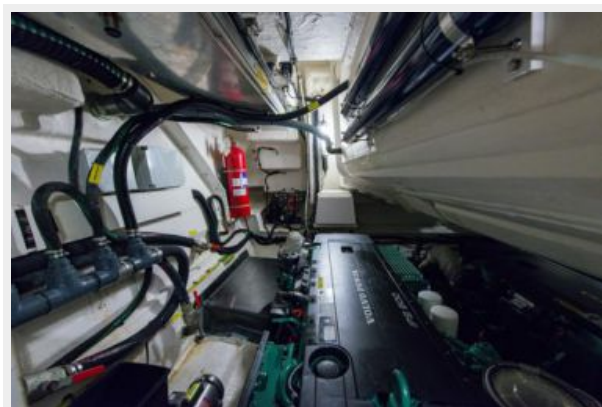




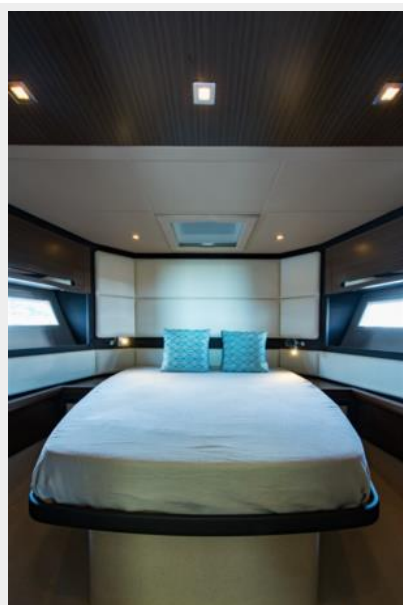
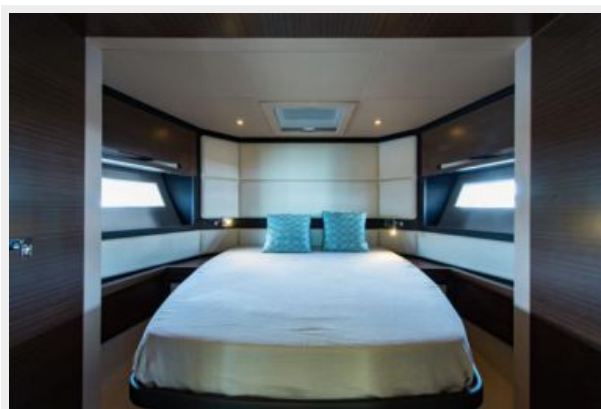


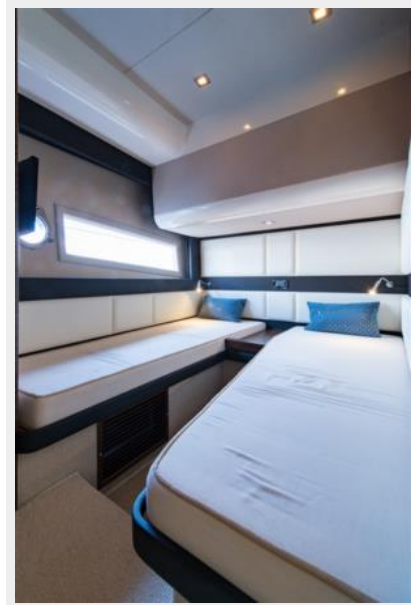
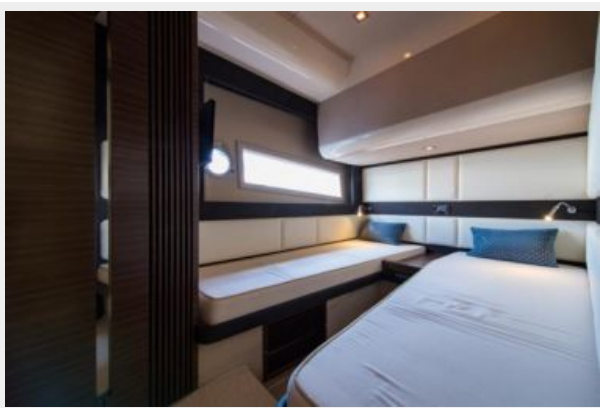
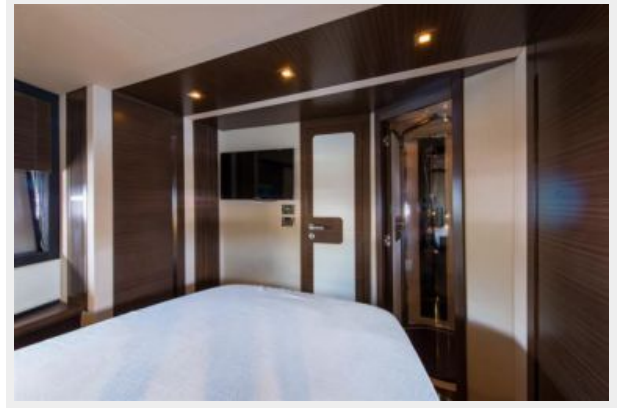


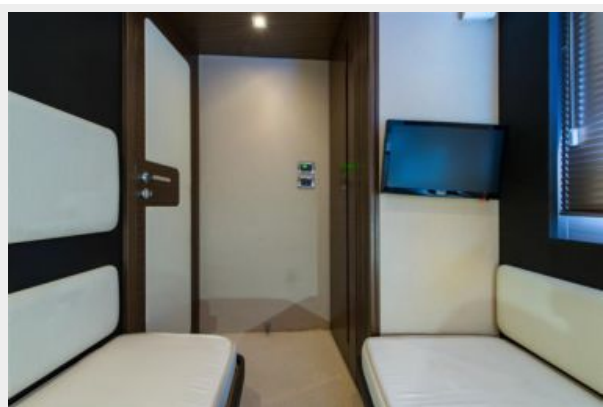
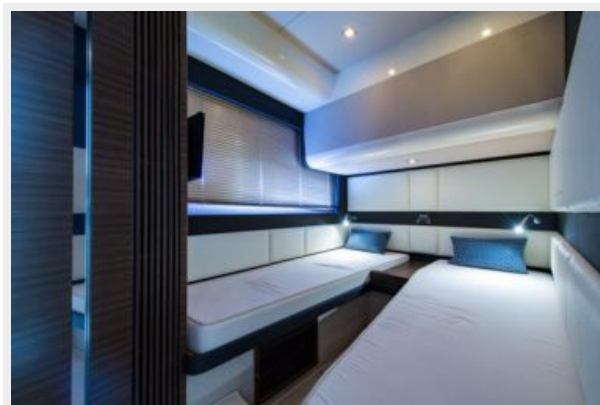


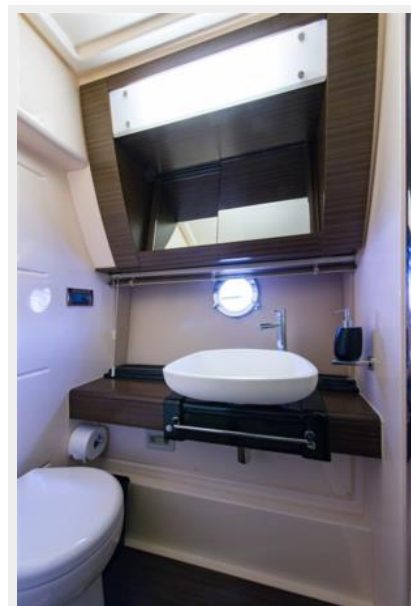


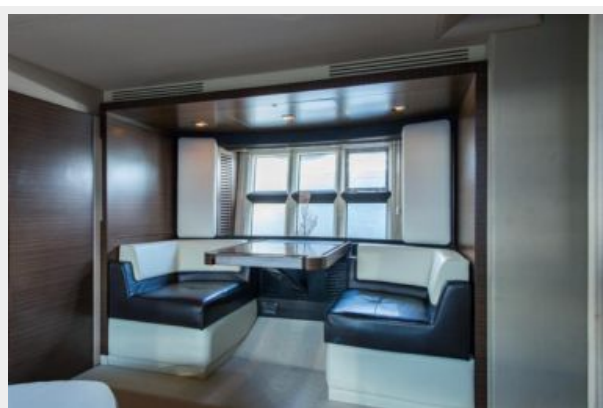
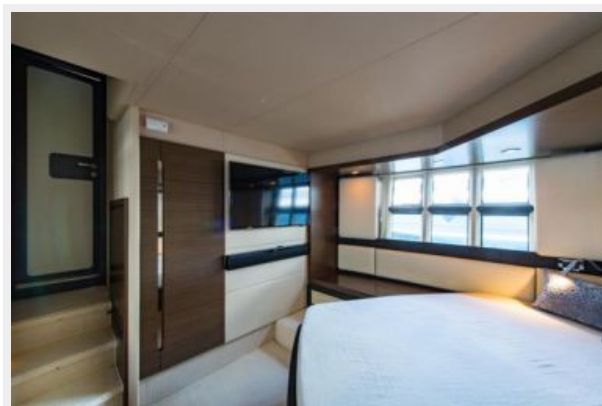
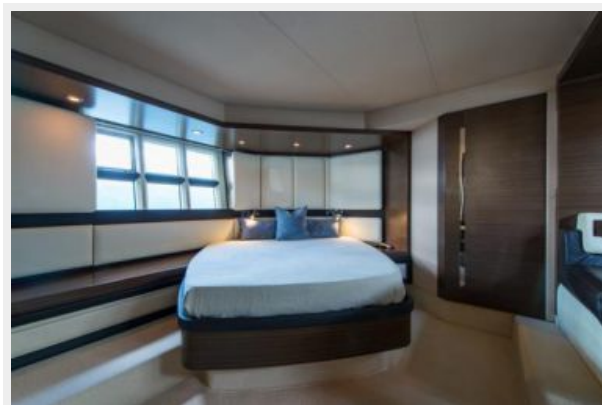






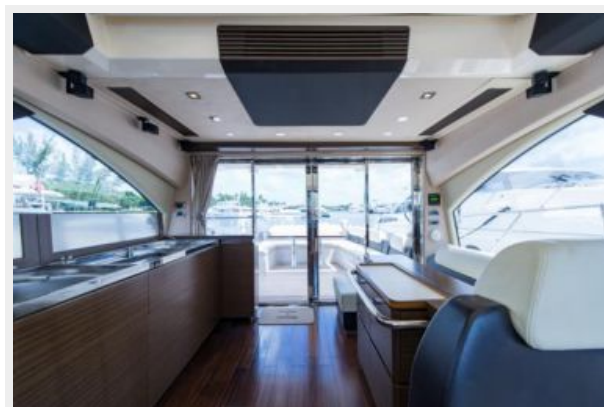














CONTACTS

Andrey Shestakov, leading yacht broker of the sales department of Shestakov Yacht Sales Inc. Shestakov Yacht Sales Inc., the official representative of the Miami/Fort Lauderdale FL headquarters.

Contact details

Email:
andrey@shestakovyachtsales.com

Web: shestakovyachtsales.com/en/

Telephones

USA: **+1(954)274-4435**

Office hours

Monday – Saturday: **9:00 - 21:00 EDT**

Sunday: **closed**

Address



Harbour Towne Marina, 850 NE 3rd St,
STE 213, Dania, FL 33004