

WHAT DOES IT TAKE — SEA RAY



Судостроитель: SEA RAY

Год постройки: 2001

Цена: **ЦЕНА ЯХТЫ ПО ЗАПРОСУ**

Местонахождение: United States

Длина общая: 48' 0" (14.63m)

Ширина: 15' 4" (4.67m)

Макс. осадка: 3' 8" (1.12m)

Купить **WHAT DOES IT TAKE — SEA RAY** а также выбрать подходящую вам яхту из нашего каталога яхт вам поможет опытный яхтенный брокер Андрей Шестаков. На сегодняшний день компания **Shestakov Yacht Sales Inc.** имеет большое количество яхт в собственном списке продаж, а также тесно сотрудничает со всеми крупными яхтенными производителями по всему миру.

Для того чтобы купить яхту **WHAT DOES IT TAKE — SEA RAY** а также проконсультироваться по любому вопросу связанному с покупкой, продажей, чартером яхт позвоните по телефону **+7(918)465-66-44**.

ОГЛАВЛЕНИЕ

ОГЛАВЛЕНИЕ	2
ХАРАКТЕРИСТИКИ	4
Обзор	4
Основная информация	4
Размеры	5
Скорость, вместимость и масса	5
Размещение	5
Корпус и палуба	5
Информация о двигателе	5
ПОДРОБНОЕ ОПИСАНИЕ	6
Salon	6
Galley	6
Master Stateroom	6
Master Head	7
VIP Stateroom	7
Starboard Stateroom	7
Guest Head	7
Electronics & Navigation Equipment	8
Electrical System/Equipment	8
Cockpit	8
Flybridge	9
Helm	9
Deck Equipment	9
Engine Room	10
Exclusions	10
Исключения	10
Отказ от ответственности	10
ФОТОГРАФИИ	11

large_1480277	11
Sea Ray 47 Sedan Bridge Helm Electronics	16
Sea Ray 47 Sedan Bridge Helm	16
Sea Ray 47 Sedan Bridge Helm	17
КОНТАКТЫ	19
Контактная информация	19
Телефоны	19
Время работы	19
Адрес	19

ХАРАКТЕРИСТИКИ

Обзор

This 48' Sedan Bridge by Sea Ray is a 'one of a kind' opportunity!! And hands down the nicest and best equipped on the market today!! She is meticulously maintained and has MANY recent upgrades that make her the most attractively priced 480 and will be the next one sold!! This spacious sedan bridge is a perfect boat and is one of the most versatile boats ever to come out of a mold!! Powered by Caterpillar 3196's , she will get up quick and cruise comfortably to your destinations! Great for cruising, fishing, weekend family getaways, entertaining and a just plain, all around enjoyable way to spend time on the water!! Large salon with many amenities, two large staterooms, fully functional galley and a cockpit that is ready to fish, entertain or just relax! The flybridge is built for the most discriminating captains and is climate controlled with new air and tinted glass!! Entire vessel painted with 'Alexseal 2000'! and she looks AMAZING!! New Garmin electronics added spring 2018, Both after coolers replaced spring 2018, new ac units on bridge and stateroom!! New generator 2015, new poly-carbonate tinted bridge glass!! Call today to schedule a viewing!! YOU WON'T BE DISSAPOINTED!!

- NEW-Helm A/C
- New-Stateroom A/C
- NEW-After Coolers
- NEW-Garmin Electronics
- NEW-Generator- 2 yrs ago
- NEW-Hot water heater- 2 yrs ago
- Dual Prop Sets
- Custom poly-carbonate Bridge glass
- Entire boat painted w/Alexseal 2000
- NEW-Wet Sound speakers
- Hydraulic lift for tender with remote

Основная информация

Подкатегория: Крейсер

Модельный год: 2001

Год постройки: 2001

Страна: United States

Размеры

Длина общая: 48' 0" (14.63m)

Длина по ватерлинии: 48' 0" (14.63m)

Длина палубы: 48' 0" (14.63m)

Ширина: 15' 4" (4.67m)

Макс. осадка: 3' 8" (1.12m)

Длина привального бруса: 48' 0" (14.63m)

Скорость, вместимость и масса

Вместимость воды: 140 Gallons

Вместимость сточного бака: 40 Gallons

Объем топливного бака: 500 Gallons

Размещение

Всего кают: 3

Корпус и палуба

Материал корпуса: Fiberglass

Информация о двигателе

Двигатели: 2

Производитель: CAT

Модель: 3196

Тип двигателя: Inboard

Тип топлива: Diesel

ПОДРОБНОЕ ОПИСАНИЕ

Salon

- Bose Lifestyle stereo system
- Convertible sofa/sleeper, electric w/storage below
- Direct TV receiver
- AC/DC panel
- Cherry wood interior
- Salon A/C unit
- Clarion stereo and CD storage cabinet
- TV/DVD/VHS plays through Bose system
- Tape storage cabinet
- Stainless steel sliding salon door

Galley

- Sharp microwave/convection oven
- Flush mount 3-burner stove
- Dish storage cabinet
- Fiberglass countertop w/Corian cutting board and Grohe designer faucet
- Glass and bottle storage cabinet
- Wood flooring
- Keurig coffee machine
- Trash cute w/concealed removable trash can
- Sub Zero refrigerator with icemaker
- Sub Zero freezer
- Upper and lower storage cabinets

Master Stateroom

- Full-size pedestal bed
- LED flat-screen TV with remote
- Privacy door
- Cedar-lined hanging lockers w/mirrored door
- Second closet with shelving
- Air conditioning control
- Drawers & storage under bed
- Enclosed gunwale cabinets
- Floor storage compartments
- Side shelf storage

- (4) Port lights
- (1) Deck hatch with shade and sun screen

Master Head

- Corian vanity top w/sink, storage and medicine cabinet w/mirror
- Grohe designer faucet
- Holding tank level indicators
- 110V outlet
- Power vent
- Shower w/seat and acrylic circular door
- Vacuflush head

VIP Stateroom

- Built-in storage w/drawers
- Cedar-lined hanging locker w/mirrored door
- Circular skylight
- Air conditioning control
- Privacy door to head
- Floor storage compartment
- Full-size bed
- LED flat-screen TV with remote

Starboard Stateroom

- Built-in storage w/drawers
- Cedar-lined hanging locker
- Circular skylight
- CO2 monitor
- Twin beds
- Washer/dryer combo
- Overhead storage
- (2) Port lights
- Recovered cushions-NEW

Guest Head

- Corian vanity top w/sink, storage and medicine cabinet w/mirror
- Power vent

- Shower w/seat and bi-fold door
- Vacuflush head
- 110V outlet

Electronics & Navigation Equipment

- Custom color and dual chartplotters with radar overlay capability and back-up GPS
- NEW-Garmin 7612 MFD -NEW
- NEW-Garmin 742 GPS MAP -NEW
- NEW-Garmin Gen II 4' XHD 2 Open Array w/Upgrade to Phantom 4
- Raytheon R220 VHF
- Raytheon Ray ST60 tridata
- New Direct TV dish system
- (2) Raymarine RN300 GPS
- ACR RCL-100 spotlight
-

Electrical System/Equipment

- 50 amp dockside power w/Glendinning cablemaster w/wireless remote
- 50 amp electronics circuit with ground plate
- (4) Optima AGM gel batteries
- Westerbeke 12.5kw generator, remote start w/muffler, freshwater cooling, fuel filter, seacock and sweater strainer and remote instrument panel (1340 hrs.)
- 30,000 BTU air conditioning/heat

Cockpit

- Aft transom wall w/fiberglass storage bins and fold-out aft seat
- Aft Full bench seat with storage below
- Aft wall fender storage
- Cockpit side storage
- Courtesy lights
- Molded-in cockpit boarding steps
- Colored overhead lighting
- Custom camper top
- Self-bailing fiberglass cockpit wit gas-assisted bilge service hatch
- Transom door
- Live baitwell system

- Macerator w/Seacock interlock system
- Sea Ray Lift
- Sony speakers

Flybridge

- Wet bar w/sink, trash receptacle and refrigerator
- Air conditioning
- Bow thruster
- Clarion AM/FM digital cassette stereo w/6-disc CD changer, subwoofer, amplifier (6) speakers and cockpit remote control
- LED flat screen TV
- SS Steig captain chairs fully reclining and rotating 1 step
- Venturi windshield
- Bridge cocktail table
- Bridge control station with windscreen
- Bridge cover
- Courtesy lights
- Bridge hardtop w/enclosures (recent custom Stamoid canvas with 80 ml. poly carbonate)
- Forward curved bench seating w/storage below
- Molded bridge access steps with storage compartment

Helm

- Digital LCD systems monitor for engine diagnostics and pump monitoring
- Power steering
- Console cover
- Bow thruster
- Custom Sea Ray backlit instrumentation w/low glare blue night lighting
- Clarion stereo w/remote
- Hydraulic steering w/tilt wheel

Deck Equipment

- Underwater lights
- ACR remote-controlled spotlight
- Concealed dual air horns
- Dockside water inlet
- Freshwater wash-down w/hot and cold cockpit shower
- Stainless steel front anchor

Engine Room

- 18-gal. water heater
- 68-gal. head system holding tank w/dockside pump out
- (2) Automatic bilge pumps
- Bilge lights
- Bilge washdown faucet
- Cabin high water alarm and pump
- Crossover fuel system
- Dual 12V pressure water system
- (2) Electric bilge blowers
- Gray water system
- Dual Racor filters and fuel shut off valves per engine
- Dripless shaft logs
- Engine alarms (water, oil and transmission oil)
- Engine drip sumps
- Halon system
- High water bilge alarm and pump
- Oil changer system
- Synchronizer
- Hydraulic trim tabs

Exclusions

Owner's personal property

Исключения

При продаже яхты исключаются личные вещи владельца.

Отказ от ответственности

Компания предоставляет описание судна или яхты добросовестно, но не может гарантировать точность этой информации, а также не ручается за техническое состояние. Покупатель должен проинструктировать своих агентов или оценщиков исследовать представленную информацию более подробно, по собственному желанию. Продажа судна или яхты, изменение цены или снятие с продажи будет происходить без предварительного уведомления.

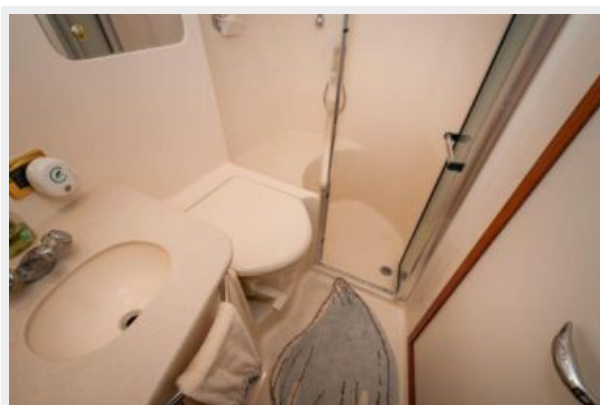
ФОТОГРАФИИ

large_1480277

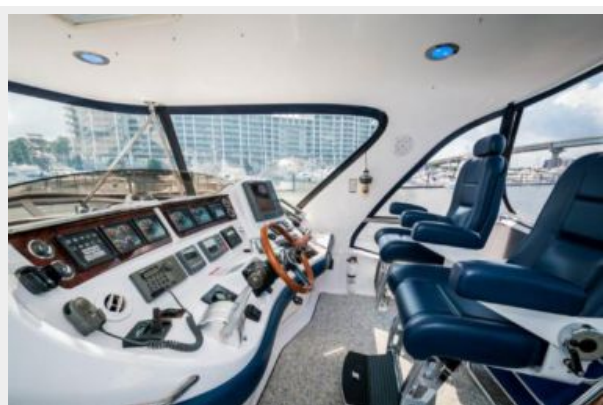
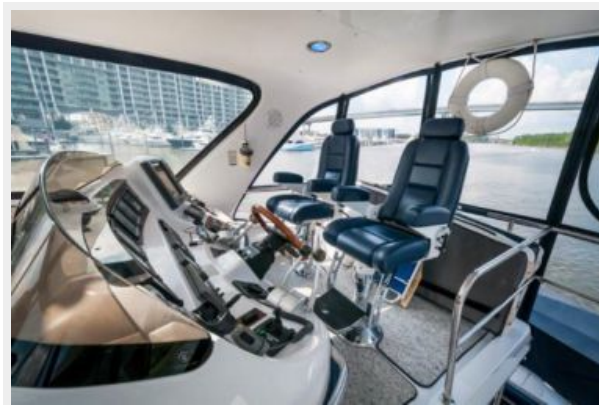








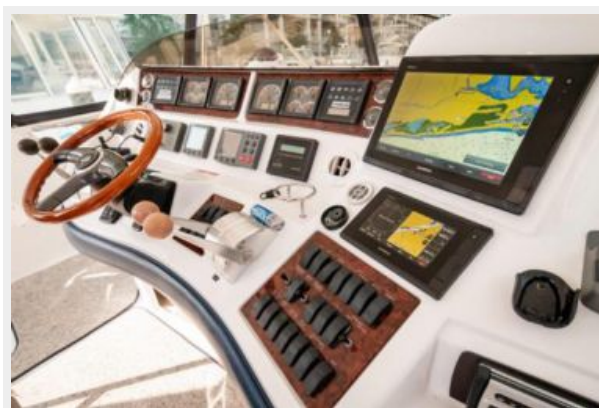




Sea Ray 47 Sedan Bridge Helm Electronics



Sea Ray 47 Sedan Bridge Helm



Sea Ray 47 Sedan Bridge Helm





КОНТАКТЫ

Андрей Шестаков (Andrey Shestakov) – ведущий яхтенный брокер отдела продаж яхт и судов компании Shestakov Yacht Sales Inc. Официальный представитель Shestakov Yacht Sales Inc. для русскоговорящих клиентов в центральном офисе компании в Майами/Форт Лодердейл/Флорида/США.

Контактная информация

Email: andrey@shestakovyachtsales.com

Web: shestakovyachtsales.com

Телефоны

Краснодарский край: **+7(918)465-66-44**

США, Майами, Флорида: **+1(954)274-4435**

Время работы

Понедельник – Суббота: **9:00 - 21:00**
EDT

Воскресенье: **Закрето**

Адрес



Harbour Towne Marina, 850 NE 3rd St,
STE 213, Dania, FL 33004