

LIGHT REIGN — CHERUBINI



Builder: CHERUBINI

Year Built: 2000

Model: Schooner

Price: PRICE ON APPLICATION

Location: United States

LOA: 48' 0" (14.63m)

Beam: 13' 0" (3.96m)

Min Draft: 5' 10" (1.78m)

Cruise Speed: 8 Kts. (9 MPH)

Max Speed: 9 Kts. (10 MPH)

Our experienced yacht broker, Andrey Shestakov, will help you choose and buy a yacht that best suits your needs **Light Reign — CHERUBINI** from our catalogue. Presently, at Shestakov Yacht Sales Inc., we have a wide variety of yachts available on our sale's list. We also work in close contact with all the big yacht manufacturers from all over the world.

If you would like to buy a yacht **Light Reign — CHERUBINI** or would like help answering any questions concerning purchasing, selling or chartering a yacht, please call **+1(954)274-4435**

TABLE OF CONTENTS

TABLE OF CONTENTS	2
SPECIFICATIONS	4
Overview	4
Basic Information	4
Dimensions	4
Speed, Capacities and Weight	4
Accommodations	4
Hull and Deck Information	5
Engine Information	5
DETAILED INFORMATION	6
Preview	6
Introduction	6
Details, Refit Description	6
Layout	7
Galley	7
Electronics and Navigation Equipment	7
Electrical System	7
Mechanical Equipment	7
Deck Equipment	8
Sails and Rigging	8
Safety Equipment	8
Construction	8
Other Features	9
Remarks	9
In Conclusion	9
Exclusions	9
Disclaimer	9
PHOTOS	10

Generator	13
Main Engine	14
CONTACTS	15
Contact details	15
Telephones	15
Office hours	15
Address	15

SPECIFICATIONS

Overview

If dominating PHRF and schooner races from Gloucester, Mass, through the Chesapeake, Key West, Florida, St. Pete to Mexico and into the Caribbean sounds like an adventure to you, **LIGHT REIGN** is the ideal vessel to get the job done!! She has shown her classically beautiful wine glass stern to many racing yachts over the years and will continue to do so for many years to come!

Basic Information

Category: Schooner

Sub Category: Cruising/Racing Sailboat

Model Year: 2000

Year Built: 2000

Country: United States

Dimensions

LOA: 48' 0" (14.63m)

LWL: 44' 0" (13.41m)

Beam: 13' 0" (3.96m)

Min Draft: 5' 10" (1.78m)

Clearance: 64' 0" (19.51m)

Speed, Capacities and Weight

Cruise Speed: 8 Kts. (9 MPH)

Max Speed: 9 Kts. (10 MPH)

Displacement: 40000 Pounds

Fuel Capacity: 160 Gallons

Accommodations

Total Cabins: 2

Total Heads: 2

Hull and Deck Information

Hull Material: Fiberglass

Deck Material: Teak

Hull Color: Flag Blue

Hull Designer: John Cherubini

Exterior Designer: John Cherubini

Interior Designer: John Cherubini

Engine Information

Engines: 1

Manufacturer: Yanmar

Model: 4JBE

Engine Type: Inboard

Fuel Type: Diesel

DETAILED INFORMATION

Preview

If dominating PHRF and schooner races from Gloucester, Mass, through the Chesapeake, Key West, Florida, St. Pete to Mexico and into the Caribbean sounds like an adventure to you, **LIGHT REIGN** is the ideal vessel to get the job done!! She has shown her classically beautiful wine glass stern to many racing yachts over the years and will continue to do so for many years to come!

Introduction

Very few sailing yachts attract the worldwide attention of yachtsman like the famous classic schooners of the Cherubini family. John Cherubini created the proud descendant of the famous "TICONDEROGA", designed by L. Francis Herreshoff, and in doing so, continued the dream of every romantic yachtsman.

Nothing is more elegant than a dark hulled schooner with slightly sweptback spars, elegant clipper bow, and low-profile cabin tops, the perfect description of **LIGHT REIGN**, the last 48' Cherubini built and maintained to perfection!!

Below deck, the exquisite varnished mahogany is highlighted by the finely crafted raised panel details done in classic Herreshoff satin white. Add to this, teak and holly sole, varnished mahogany overhead beams, cane locker doors, and the finest hardware available, the result must be seen to be appreciated!

Details, Refit Description

Note: the extensive 2013/2014 refit was done by Cherubini in their N.J. building facility.

1) New water tanks (4) 2015 2) Hull painted 2013 Flag blue hull, coach roof, waterways, and anti-fouling paint Spring 2018 3) Decks re-caulked and sanded 4) Complete standing rigging disassembly (new 2013 Osirod) and inspection, booms painted, and complete new running rigging 5) Entire rig out inspection/service (Spring 2018) 6) All sails inspected and serviced, new 2013 Hood, 2018 Spin North new 7) Interior: refinished teak & holly floors and all high wear surfaces 2015 8) Engine and generator complete service 2018 9) Life raft re-certification – current inspection 10) Watermaker new 2015 (Katadyn) 11) B&G instruments updated / serviced 12) New tank sending units (Mastervolt) 13) Air conditioning re-plumbed / serviced 2017 14) 2-Raritan Elegance electric heads (new 2013) 15) Ultra-suede blue salon cushions 2015 16) Lopo LED running lights 2013 17) New engine control panel (Yanmar)

Layout

Starting forward is the Guest Cabin with a V-berth, numerous drawers, and storage lockers, plus en-suite head with shower and sink.

Next aft is the main salon with full size port and starboard settees with drop leaf dining table. Overhead is an elegant, butterfly opening mahogany skylight, allowing fantastic ventilation and natural light throughout the salon and galley area. There are numerous outboard bookshelves and storage lockers as well as properly placed Perko reading and overhead lights. The large U-shaped galley is aft to port and open to the salon and dining area.

Opposite the galley to starboard is the nav station with large chart table aft. Next aft to starboard is an enclosed washer/dryer which is opposite from the master cabin to port with ensuite head and shower plus hanging locker and drawers and access to the main engine. New Tempur-Pedic owner's cabin mattress (2017).

Galley

Sea Frost cold plate refrigerator with separate freezer; both cooled by DC and engine driven compressors Broadwater stainless steel 4-burner propane stove and oven Sharp microwave oven (2016) Double stainless sinks with both 12-volt and manual back-up pumps for fresh water Atlantic stainless steel 6-gallon water heater Sea Gull water filtration system

Electronics and Navigation Equipment

Navico/B & G Autopilot with AC42N Pilot Computer & keypad Simrad GPS 1330-N with AIS antenna Simrad 4G BB Radar with RI10 ICOM IC-M710 SSB with remote tuner 3 Navico/B&G Triton T41 displays for wind/speed/Depth Simrad/Airmar B60 Depth/Temp Marinc/BEP Color DC Monitor DCSM600 2 Each Garmin VHF 200 radios Simrad GoFree Wifi interface Simrad WM2 Sirius Weather module Simrad RC42 Compass Danforth Constellation compass at helm EPIRB Fusion Class D 1600W 5 channel Amp Simrad Sonic Hub Simrad NAIS-400 class B AIS Startech 7 port USB Hub Mastervolt MB four tank level interface Brass Clock & Barometer

Electrical System

Fisher Panda 8 kW genset - serviced 2017 Mastervolt (2013) inverter with remote LED panel 160-amp alternator (2) Lithium Ion 2013 (760 A.H.) house batteries (1) Group 24 genset starting battery (2016) (2) 240-volt AC with 50-amp cord with 30/50 splitter 12-volt DC system

Mechanical Equipment

(2) Ocean Marine 16,000 BTU AC units with reverse cycle heat – serviced 2017 Espar and SAA

diesel heating systems Katadyn 20 gph watermaker, New 2015 Splendide combo washer/dryer Automatic & manual bilge pumps Side-Power Bow thruster 4-Blade Max blade prop 2013 and one spare 3-blade Max prop

Deck Equipment

Teak decks Teak cockpit table Edson pedestal wheel steering and spare Lewmar folding wheel (12) Opening ports – replaced 2015 (SS) “New Found Metals” Classic butterfly salon hatch Full dodger, bimini with screen enclosure and side curtains plus covers for hatches and dorade boxes Cockpit cushions, New 2017 Lighthouse 1501 stainless steel windlass with twin wildcats and remote at helm CQR 60# plus 60# anchors with 300' 3/8" new chain and second 300' of rode/50' chain

Sails and Rigging

Carbon fiber main mast with double spreaders and carbon foremast, both painted white with white aluminum booms Stainless steel rod standing rigging new 2013, with SSB insulated backstay (Inspected May 2018) Profurl jib and staysail furling, main and staysail 2014 Electric in-mast mainsail furling, New 2014 (Bamar) Harken 4:1 running backstays, 2018 (3) Harken 53 2-speed electric winches (1) Harken 53 2-speed manual ST winches (2) Harken 40 2-speed ST winches Both main mast and foremast have Harken 44 and 40 2-speed manual ST winches Lewmar line stoppers on masts

SAILS: Dacron in-mast furling – Hood 2013 and fisherman (cruising), 2014 main Dacron 130% Genoa – Hood 2013, fisherman and gollywober Dacron Jib – Hood 2013 Dacron fore staysail – Hood 2013 and Assym spin 2018 (North) Dacron staysail 2013 All sails serviced in 2015

Safety Equipment

Switlik 6-man liferaft in hard case - inspected 2017 (4) B-1 fire extinguishers Bell, horn, day/night visual distress signals, radar reflectors, and Coast Guard required safety gear Complete medical kit

Construction

The hull and cockpit are constructed of hand rolled and squeegeed resin with both unidirectional and biaxial fibers. The keel ballast is internal and completely resin covered and bonded into the hull laminate. Hull thickness at waterline is one-inch.

The deckhouse and side decks are cold molded mahogany with epoxy saturation between all layers exact details available on request.

Other Features

Lee cloths Shoal draft scheel keel design Canvas helm and hatch covers

Remarks

Rarely available on the market, Cherubini schooners represent many important and seldom found unique features: Legendary classic beauty, unsurpassed quality of construction, proven sea keeping manners in all conditions, easily handled by two people, fantastic speed and perhaps best of all, membership in a very exclusive "proper yacht" community!

LIGHT REIGN represents an extraordinary opportunity to acquire the latest and best maintained 48 in existence. Having crossed the Atlantic and cruised in the Med, returned and sailed and raced the East coast of the U.S. and the Bahamas, she is ready to continue doing what she does best...elegant fast passages for her next owners.

LIGHT REIGN has been featured in Ferenc Mate's latest edition of "Best Boats" if you wish to confirm the well-deserved reputation of Cherubini Yachts.

In Conclusion

The proud owner and full-time captain have set a new example of proper yacht care and maintenance of this sailing icon, with the owner stating that "I have enjoyed this boat more than most things in my life", so I suggest that you let your emotions help be your guide, set up a visit to the Eastern Shore of Maryland, and step aboard one of the most elegant sailing creations available today!

Exclusions

Owner's personal belongings.

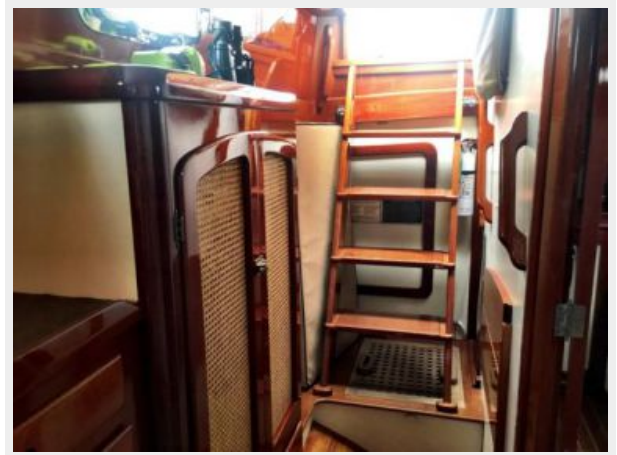
Disclaimer

The Company offers the details of this vessel or yacht in good faith but cannot guarantee or warrant the accuracy of this information nor warrant the condition of the vessel. A buyer should instruct his representatives, agents, or his surveyors, to investigate such details as the buyer desires validated. This vessel or yacht is offered subject to prior sale, price change, or withdrawal without notice.

PHOTOS









Generator



Main Engine



CONTACTS

Andrey Shestakov, leading yacht broker of the sales department of Shestakov Yacht Sales Inc. Shestakov Yacht Sales Inc., the official representative of the Miami/Fort Lauderdale FL headquarters.

Contact details

Email: andrey@shestakovyachtsales.com

Web: shestakovyachtsales.com/en/

Telephones

USA: +1(954)274-4435

Office hours

Monday – Saturday: **9:00 - 21:00** EDT

Sunday: **closed**

Address



Harbour Towne Marina, 850 NE 3rd St,
STE 213, Dania, FL 33004