

ABOVE AND BEYOND — AZIMUT



Судостроитель: [AZIMUT](#)

Год постройки: 2015

Модель: Моторная яхта

Цена: ЦЕНА ЯХТЫ ПО ЗАПРОСУ

Местонахождение: United States

Длина общая: 43' 0" (13.11m)

Ширина: 13' 11" (4.24m)

Макс. осадка: 3' 7" (1.09m)

Крейс. скорость: 30 Kts. (35 MPH)

Макс. скорость: 35 Kts. (40 MPH)

Купить **Above and Beyond — AZIMUT** а также выбрать подходящую вам яхту из нашего каталога яхт вам поможет опытный яхтенный брокер Андрей Шестаков. На сегодняшний день компания **Shestakov Yacht Sales Inc.** имеет большое количество яхт в собственном списке продаж, а также тесно сотрудничает со всеми крупными яхтенными производителями по всему миру.

Для того чтобы купить яхту **Above and Beyond — AZIMUT** а также проконсультироваться по любому вопросу связанному с покупкой, продажей, чартером яхт позвоните по телефону **+7(918)465-66-44**.

ОГЛАВЛЕНИЕ

ОГЛАВЛЕНИЕ	2
ХАРАКТЕРИСТИКИ	5
Основная информация	5
Размеры	5
Скорость, вместимость и масса	5
Размещение	5
Корпус и палуба	5
Информация о двигателе	6
ПОДРОБНОЕ ОПИСАНИЕ	7
Description	7
Salon	7
Galley	7
Master Stateroom	7
Master Stateroom Head	8
Guest Stateroom	8
Guet Head	8
Deck	8
Electronics	9
Electrical/Mechanical	9
Remarks	9
Исключения	10
Отказ от ответственности	10
ФОТОГРАФИИ	11
Cabin	11
Cabin	11
Cabin	11
Cabin	11
Master Stateroom	11

Master Stateroom	11
Master Stateroom	12
Master Stateroom	12
Master Stateroom Head	12
Master Stateroom Head	12
Master Stateroom Head	13
Master Stateroom Head	13
Guest Stateroom	13
Guest Stateroom	13
Guest Stateroom	13
Guest Stateroom	13
Guest Stateroom	14
Guest Stateroom	14
Guest Stateroom Head	14
Guest Stateroom	14
Guest Stateroom Head	15
Helm	15
Helm	15
Helm	15
Helm	15
Helm	15
Helm	16
Helm	16
Helm	16
Helm	16
Helm	16
Helm	16
Helm	16
Helm	16
Helm	17
Helm	17

Helm	17
Swim Platform	17
To The Helm	17
To The Helm	17
Bow	18
Bow	18
Bow	18
Sunroof	18
Sunroof	18
Sunroof	18
Tender	19
Tender	19
Engine Room	19
Engine Room	19
Engine Room	19
Engine Room	19
Above and Beyond	20
Above and Beyond	20
Above and Beyond	20
КОНТАКТЫ	21
Контактная информация	21
Телефоны	21
Время работы	21
Адрес	21

ХАРАКТЕРИСТИКИ

Основная информация

Тип судна: Моторная яхта

Модельный год: 2016

Год постройки: 2015

Страна: United States

Кубрик: Да

Размеры

Длина общая: 43' 0" (13.11m)

Ширина: 13' 11" (4.24m)

Макс. осадка: 3' 7" (1.09m)

Скорость, вместимость и масса

Крейс. скорость: 30 Kts. (35 MPH)

Макс. скорость: 35 Kts. (40 MPH)

Водоизмещение: 26600 Pounds

Вместимость воды: 108 Gallons

Объем топливного бака: 237 Gallons

Размещение

Всего кают: 2

Корпус и палуба

Материал корпуса: Fiberglass

Информация о двигателе

Двигатели: 2

Производитель: Volvo Penta

Модель: D6

Тип двигателя: Inboard

Тип топлива: Diesel

ПОДРОБНОЕ ОПИСАНИЕ

Description

Above and Beyond is truly unique in this size range being extremely functional and versatile with solid performance. The 43's space planning is impressive both outside and in with several lounging areas and accommodations. A two stateroom, two head layout has berths for three aft and two in the master with an island queen bed. A larger galley than other similarly sized express boats, loads of storage, and a bright and airy salon area. The light walnut and fabrics avoid the cave like feeling typically found in this size range. The outside space starting aft with a sunpad that conceals a dedicated tender storage, along with a moveable backrest to form either forward or aft facing seating. The seating rest atop a garage that houses a small tender up to 7' long. The port side wetbar has space for refrigerator, freezer and ice maker. The starboard settee surrounds a teak table seating up to seven comfortably for outdoor meals. To port forward is a raised bench seat that converts to a forward facing chaise lounge. To starboard is the double helm seat looking through a single pane windshield with unobstructed views. A large soft sunroof turns the 43 into an open express with opening side windows as well. The decks are all finished in teak including the walk around to the large sunpad in the bow. Above and Beyond is a must see for express buyer with unrivaled features in 43'.

Salon

- Open airy hullside windows behind U shaped dinette, easily seating 4
- Overhead storage cabinets in white lacquer
- LED overhead lighting
- Hardwood flooring
- Flat screen TV
- Access to second head
- Mirror on bulkhead

Galley

- Microwave oven
- Upright refrigerator/freezer
- Stainless steel sink
- Panoramic window with opening port hole
- Ceramic glass 2 nob range
- LED lighting

Master Stateroom

- Port and starboard double wardrobe lockers with mirror
- Panoramic windows with blinds
- Double queen bed with reading lights
- Overhead storage port and starboard
- LED lighting
- Flat screen TV
- Zone a/c - heat
- Carpeting

Master Stateroom Head

- Separate shower stall with seat and storage
- Vanity and sink
- Toilet
- Hull side window

Guest Stateroom

- Wardrobe storage with mirror
- Panoramic windows with port holes
- Reading lights
- Two single beds that can be joined together to make a double
- 3rd berth portside
- Flat screen TV
- Carpeting

Guest Head

- Private access
- Separate stall shower with seat
- Full vanity with sink and mirror
- LED lighting
- Porthole

Deck

- Tender garage with hydraulic swim platform and ladder
- Suzukino model 220 dinghy
- Teak decks
- Cockpit awning with full enclosure

- Stainless rails, full length
- Anchor windlass
- Hot and cold transom shower

Electronics

- Raymarine hybrid touch chart plotter, radar and sounder
- Raymarine autopilot
- Side power bow thruster
- Volvo joystick control
- Volvo dual lever clutch and throttles
- Volvo multi gauge engine instrumentation
- Lenco trim tabs
- Ritchie compass
- Raymarine VHF
- Fusion stereo system with JL speakers
- KVH tracvision Sat TV with 2 receivers

Electrical/Mechanical

- 60 Hertz USA version from factory
- 30 amp shore cord
- Automatic battery charger, 12v-61 ah
- Engine battery, 12V 100ah (2)
- Service battery, 12V 100ah (2)
- Bilge alarm for internal rooms and engine room
- 30 gal water heater
- By pass for direct freshwater shore connection
- Electric fresh water pump with filter hot/cold shut off valves
- Automatic bilge pumps (3)
- Manual bilge pumps (2)
- Grey water tank with separate discharge pump
- Mase Generator, 8kw

Remarks

This boat has the amenities of a larger Cruiser, but handles and performs like a sport boat. Transom garage with tender, Joystick docking, 2 stateroom 2 head layout, Great cockpit seating and sunroof. Very low hours and in excellent condition.

Исключения

При продаже яхты исключаются личные вещи владельца.

Отказ от ответственности

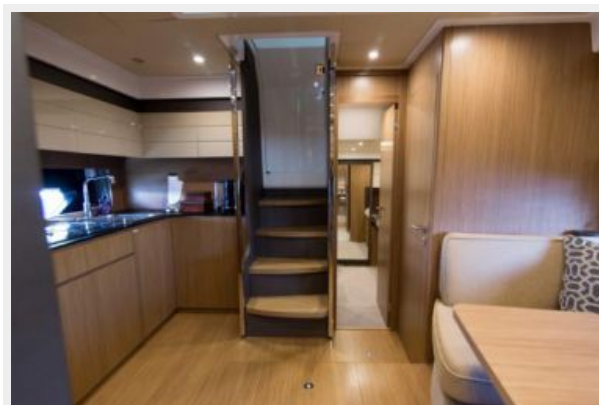
Компания предоставляет описание судна или яхты добросовестно, но не может гарантировать точность этой информации, а также не ручается за техническое состояние. Покупатель должен проинструктировать своих агентов или оценщиков исследовать представленную информацию более подробно, по собственному желанию. Продажа судна или яхты, изменение цены или снятие с продажи будет происходить без предварительного уведомления.

ФОТОГРАФИИ

Cabin



Cabin



Cabin



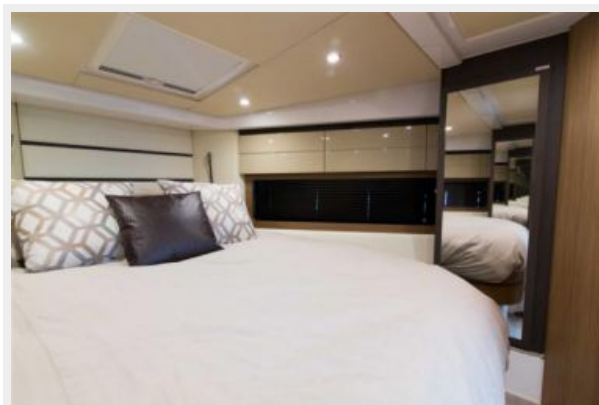
Cabin



Master Stateroom



Master Stateroom



Master Stateroom



Master Stateroom



Master Stateroom Head



Master Stateroom Head



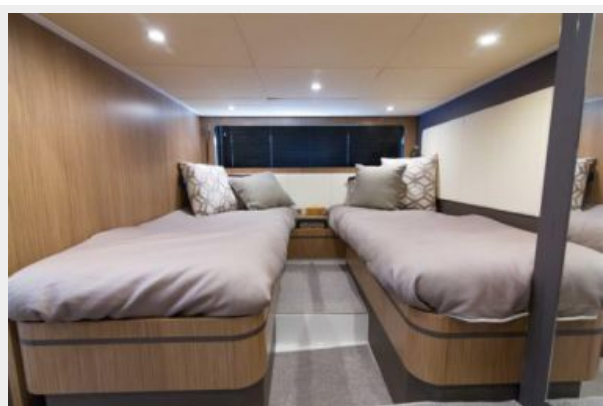
Master Stateroom Head



Master Stateroom Head



Guest Stateroom



Guest Stateroom



Guest Stateroom



Guest Stateroom



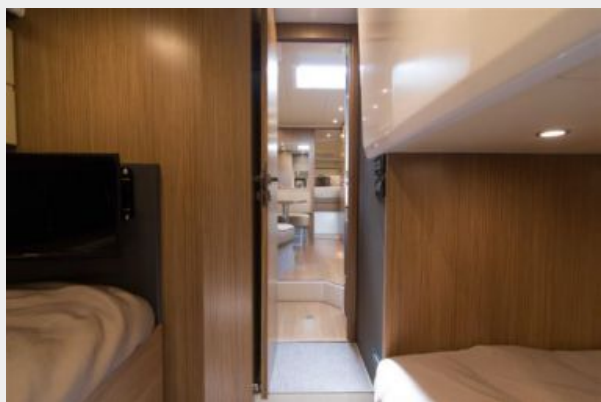
Guest Stateroom



Guest Stateroom



Guest Stateroom



Guest Stateroom Head



Guest Stateroom Head



Helm



Helm



Helm



Helm



Helm



Helm



Helm



Helm



Helm



Helm



Helm



Helm



Helm



Helm



Swim Platform



To The Helm



To The Helm



Bow



Bow



Bow



Sunroof



Sunroof



Sunroof



Tender



Tender



Engine Room



Engine Room



Engine Room



Engine Room



Above and Beyond



Above and Beyond



Above and Beyond



КОНТАКТЫ

Андрей Шестаков (Andrey Shestakov) – ведущий яхтенный брокер отдела продаж яхт и судов компании Shestakov Yacht Sales Inc. Официальный представитель Shestakov Yacht Sales Inc. для русскоговорящих клиентов в центральном офисе компании в Майами/Форт Лодердейл/Флорида/США.

Контактная информация

Email: andrey@shestakovyachtsales.com

Web: shestakovyachtsales.com

Телефоны

Краснодарский край: **+7(918)465-66-44**

США, Майами, Флорида: **+1(954)274-4435**

Время работы

Понедельник – Суббота: **9:00 - 21:00**
EDT

Воскресенье: **Закрито**

Адрес



Harbour Towne Marina, 850 NE 3rd St,
STE 213, Dania, FL 33004