

MUCHO GUSTO — HORIZON



Судостроитель: HORIZON

Год постройки: 2014

Модель: Катамаран

Цена: **ЦЕНА ЯХТЫ ПО ЗАПРОСУ**

Местонахождение: United States

Длина общая: 52' 0" (15.85m)

Ширина: 22' 0" (6.71m)

Мин. осадка: 4' 4" (1.32m)

Макс. осадка: 4' 8" (1.42m)

Крейс. скорость: 18 Kts. (21 MPH)

Макс. скорость: 22 Kts. (25 MPH)

Купить **MUCHO GUSTO — HORIZON** а также выбрать подходящую вам яхту из нашего каталога яхт вам поможет опытный яхтенный брокер Андрей Шестаков. На сегодняшний день компания **Shestakov Yacht Sales Inc.** имеет большое количество яхт в собственном списке продаж, а также тесно сотрудничает со всеми крупными яхтенными производителями по всему миру.

Для того чтобы купить яхту **MUCHO GUSTO — HORIZON** а также проконсультироваться по любому вопросу связанному с покупкой, продажей, чартером яхт позвоните по телефону **+7(918)465-66-44**.

ОГЛАВЛЕНИЕ

ОГЛАВЛЕНИЕ	2
ХАРАКТЕРИСТИКИ	4
Обзор	4
Основная информация	10
Размеры	10
Скорость, вместимость и масса	10
Размещение	11
Корпус и палуба	11
Информация о двигателе	11
ПОДРОБНОЕ ОПИСАНИЕ	12
Description	12
Исключения	18
Отказ от ответственности	18
ФОТОГРАФИИ	19
Salon Looking Aft	19
360 Degree View	19
Master Stateroom	19
Master Bathroom	19
VIP Stateroom	19
VIP Bathroom	20
At Anchor	20
Flybridge Deck	20
Stern with Toys	20
Aft Deck	20
Sunbeds on Foredeck	20
Profile	21
Flybridge Layout	21
Salon Layout	21

Cabin Layout	21
КОНТАКТЫ	22
Контактная информация	22
Телефоны	22
Время работы	22
Адрес	22

ХАРАКТЕРИСТИКИ

Обзор

A. Hull and Main Structure:

1. White Gelcoat finish for hull above water line, exterior deck, furniture and superstructure.
2. One-piece hull lamination and longitudinal girders
3. Hull is built with licensed process SCRIMP™ for improved strength and less weight
4. High density foam cored construction bottom and topsides
5. Solid fiberglass laminate stem, keel.
6. Main Engine girders with high density foam coring
7. Deck & superstructure foam cored reinforcement for rigidity
8. International anti-fouling bottom paint, w/ anti-osmosis treatment

B. Exterior Deck and Equipment:

1. Nonskid main deck (option: teak deck)
2. Teak covered aft deck & Steps (option).
3. Fiberglass cap rail.
4. S/S rub rail around hull deck joint.
5. Heavy-duty S/S #316 1-1/4" handrail w/1" (stanchions)
6. 10 Mooring cleats on deck.
7. Flag staff on back of flybridge.
8. Fuel and water inlets.
9. Locker for 24V anchor windlass.
10. 50KG DELTA anchor.
11. 150ft of high tensile 3/8" chain and 150ft warp.
12. Roller for anchor.

Doors, Hatches, Windows & Port Holes

13. SS sliding salon door.
14. Two bow storage lockers with access through flush FRP deck hatches.
15. 2 x Deck hatches with blinds & screens.
16. Engine access through manual deck hatches in cockpit floor with manual struts.
17. Two large hull side frameless window.
18. Six oval portholes.

Aft Deck Area

19. FRP Curved seat with cushions at aft. deck.
20. Teak cockpit table.
21. Comfortable stairs from aft deck to flybridge.
22. Two steps down to dive/swim platform.

23. Cockpit lockers for storage.
24. 2 side boarding doors
25. Second location bases for aft. deck table
26. S/S transom door with Horizon Logo
27. Dimmer switch for Aft. deck ceiling lighting

Swimming Platform Area

28. Built-in shower with hot/cold water.
29. Swim ladder on STBD side.
30. S/S safety rail on swim platform

Light

31. LED courtesy lights.
32. LED bulwark w/ flush mounted deck lights
33. LED ceiling lights
34. LED white light with 24VDC transformer on Horizon group logo in P&S.
35. Wiring for boat name on transom.
36. AQUA SIGNAL navigation lights.
37. Cockpit down lights.

C. Flybridge:

1. Non-skid flybridge cambered deck with ample drainage.
2. Helm station with stainless wheel and instrument console.
3. Single STIDD helm chair
4. FRP Arch & FRP Hardtop.
5. Wet bar package:
 - o FRP module bar with sink, with hot and cold water.
 - o DC fridge in bar.
6. FRP table with seating.
7. Sunning bed/ Bench Seat stb side of helm console with cushions
8. Ample locker space for storage.
9. ES1000 Steelhead Crane
10. Covers for F/B Seating and console
11. Covers for aft deck seating, aft deck table and flybridge Table

E. Engine Room and Equipments:

1. Sound and heat insulated compartments
2. Delta –T Moisture eliminators for engine rooms.
3. DC 24Volt lights.
4. One AC outlet.

F. Electrical system:

General

1. Color-coded wiring for easy identification.
2. Premium DC distribution board with switches, voltmeter and amp meter.
3. Outlets in Salon / bar / galley / cabins / fly-bridge / aft deck / engine room.
4. Vimar switches for lights and electrical outlets.

AC/DC Main Power System

5. AC power supply from generator / shore power.
6. Selector switch for AC power supply.
7. Remote panel for generator.
8. Four AGM Batteries for engine & generator start up.
9. Two AGM Batteries for ship's service power.
10. BEP battery switch.
11. One battery charger for all batteries.
12. One inverter 3.0 KW.
13. Premium AC panel with switches

Shore Power System

14. Glendenning shore power 50Amp connector with 100ft cord.

G. Mechanical system:

Fuel and Lube Oil System

1. Dual Racor 900FG filters for both engines.
2. One oil change pump for engines, generator and Gearboxes.

Fresh Water System

3. 270 Gal of water tank integral to hull.
4. Color coded piping for easy identification.
5. Marine grade lines for fresh water system
6. One 17 Gal/110V or 220V water heater.
7. High volume 24V fresh water pump with accumulator tank.
8. Fresh water washdown for anchor.
9. Fresh Water Washdown on Aft Deck.
10. 170 Gal extra fuel tank with extra fuel transfer pump and gauge

Sanitary System

11. 2 x 30 Gal of holding tank integral to hull
12. Electric fresh water flush toilets, pumps with Y valve for automatic discharge. and dock side

pump out (2).

Bilge Water System

13. 4x electric 24V bilge pumps.
14. High level bilge water alarm.

Fire Safety System

15. One Seafire automatic/manual fire extinguisher in each engine room.

Air Conditioning System

16. Marine Air –central air conditioning for each cabins and salon.
17. Air Cond. Self cleaning system
18. Hyd. Trim tab system

H. Interior Design and Equipment:

Interior Finish

1. HardWood flooring.
2. Tempered safety glass windows.
3. Soft furnishings including roman blinds and accent wood finishing.

Heads and Showers General

4. Wood floor.
5. Corian countertops.
6. Fabric blind over large window.
7. Portlights for ventilation.
8. Basin, cabinets and mirrors.
9. Walk-in separate shower.
10. Linen Cupboard inboard of the M/S shower.
11. Separate toilet.
12. Lights in Overhead.
13. Extractor fan.

Saloon

14. Salon seating covered in fabric.
15. Cabinet for Crystal Glasses.
16. 42" TV in Salon.
17. Two hatches with screen on top of salon roof

Galley/ Dinette

18. Wood floor.

19. Carporee Counter tops.
20. Sub Zero 700TCI with Icemaker
21. Double sinks with tap.
22. Custom accent wood carpentry.
23. Custom wooden carpentry for galley, cupboards and counters.
24. Cutlery & crockery drawers.
25. Pot drawer & spice drawers.
26. Additional storage drawers and cupboards.
27. Under counter trash drawer.
28. Fischer Paykel Dishwasher

VIP stateroom:

29. Queen bed, semi walk around.
30. Custom wood accent carpentry.
31. Carpeted floor
32. Deck hatch with screen & opening.
33. Fabric blind over large window.
34. Soft furnishings.
35. Night stands with light switches and outlets.

Port Aft guest stateroom:

36. Custom wood accent carpentry.
37. Carpeted floor.
38. Opening port lights in hull side.
39. Soft furnishings.
40. Twin Bunks with insert Queen size Bed
41. Storage beneath bed.
42. Cabin lights.
43. Shared bathroom with VIP cabin.

Master Stateroom

44. Custom carpentry for accent finishing.
45. Carpeted floor.
46. Deck hatch with screen & opening.
47. Fabric blinds over large window
48. Queen size bed, semi walk around.
49. Large full height closets.
50. Closets for linens / towels and clothes.
51. Cabin lights.
52. Night stands with light switches and outlets.

Galley

53. GE- 4 burner Elec. cook top.
54. Extractor over cooktop.
55. GE Microwave / Convection oven.
56. Sub Zero 700TCI refrigerator w/ freezer and Icemaker.

1. **Navigation & Instrumentation: & Audio Video Equipment:**

1. 2 x Garmin 8215 15" touch screen chart plotter with GPS antenna on Flybridge.
2. Garmin Auto pilot.
3. Garmin GMR 404 4ft open array 48 mile radar.
4. 2 x Garmin GSD 26 Depth transducers.
5. Additional GM120 display
6. Garmin VHF 300 on flybridge.
7. Garmin XM weather and Radio.
8. Sunshin Spotlight on Flybridge
9. Fusion UD750 Stereo on Flybridge
10. Sirius XM Module and Antenna
11. Fusion 51600 Amp
12. JL Audio Sub woofer & 4 x 7" JL Audio Speakers on Flybridge
13. Sonos Connect on Flybridge
14. Sonos Connect on Aft Deck with 2 x 7" JL Audio Speakers
15. Sonos Connect on Bow with 2 x 7" JL Audio Speakers
16. Sonos Playbar in Salon with 2 x Play 1 speakers and Sub woofer
17. Cisco Linksys router in Salon
18. Sonos Playbar in Master Cabin
19. 48" Samsung LED TV in Salon
20. 32" Samsung LED TV in Master
21. 32" Samsung LED TV in VIP
22. KVH HD7 Satellite TV with Dummy Dome
23. Apple TV in all Cabins
24. Bluray in Salon and Master
25. Sat TV displays on Flybridge Garmin
26. Cradlepoint Cellular Internet

1. **1. Additional Equipment:**

1. Aft Deck Sun Awning
2. Bow Deck Cushions
3. Flybridge Clear Enclosure
4. 700 Gal/day Water-maker

Основная информация

Тип судна: Катамаран	Подкатегория: Крейсер
Модельный год: 2015	Год постройки: 2014
Страна: United States	Верх: Hardtop
Открытая палуба мостика: Да	

Размеры

Длина общая: 52' 0" (15.85m)	Длина по ватерлинии: 46' 0" (14.02m)
Длина палубы: 52' 0" (15.85m)	Ширина: 22' 0" (6.71m)
Мин. осадка: 4' 4" (1.32m)	Макс. осадка: 4' 8" (1.42m)
Трапы: 25' 0" (7.62m)	Длина привального бруса: 52' 0" (15.85m)

Скорость, вместимость и масса

Крейс. скорость: 18 Kts. (21 MPH)	Крейсерская скорость поворота: 2950 Kts.
Дальность на крейсерской скорости: 400	Макс. скорость: 22 Kts. (25 MPH)
	Макс. скорость поворота: 3500 Kts.
Дальность на макс. скорости: 300 Kts.	Водоизмещение: 60000 Pounds
Чистый вес: 32 Pounds	Вместимость воды: 250 Gallons
Вместимость сточного бака: 60 Gallons	Объем топливного бака: 970 Gallons
Расход топлива: 36 Gallons	

Размещение

Всего кают: 3

Всего коек: 3

Спальные места: 6

Всего ком. состава: 2

Корпус и палуба

Материал корпуса: Advanced Composites **Материал палубы:** Composite Fiberglass

Комплектация корпуса: Катамаран

Цвет корпуса: WHITE

Отделка корпуса: Fiberglass

Дизайнер корпуса: ANGELO LAVRANOS

Дизайнер интерьера: LEIGH FORD

Информация о двигателе

Двигатели: 2

Производитель: Cummins

Модель: QSB 6.7

Тип двигателя: Inboard

Тип топлива: Diesel

ПОДРОБНОЕ ОПИСАНИЕ

Description

A. Hull and Main Structure:

1. White Gelcoat finish for hull above water line, exterior deck, furniture and superstructure.
2. One-piece hull lamination and longitudinal girders
3. Hull is built with licensed process SCRIMP™ for improved strength and less weight
4. High density foam cored construction bottom and topsides
5. Solid fiberglass laminate stem, keel.
6. Main Engine girders with high density foam coring
7. Deck & superstructure foam cored reinforcement for rigidity
8. International anti-fouling bottom paint, w/ anti-osmosis treatment

B. Exterior Deck and Equipment:

1. Nonskid main deck (option: teak deck)
2. Teak covered aft deck & Steps (option).
3. Fiberglass cap rail.
4. S/S rub rail around hull deck joint.
5. Heavy-duty S/S #316 1-1/4" handrail w/1" (stanchions)
6. 10 Mooring cleats on deck.
7. Flag staff on back of flybridge.
8. Fuel and water inlets.
9. Locker for 24V anchor windlass.
10. 50KG DELTA anchor.
11. 150ft of high tensile 3/8" chain and 150ft warp.
12. Roller for anchor.

Doors, Hatches, Windows & Port Holes

13. SS sliding salon door.
14. Two bow storage lockers with access through flush FRP deck hatches.
15. 2 x Deck hatches with blinds & screens.
16. Engine access through manual deck hatches in cockpit floor with manual struts.
17. Two large hull side frameless window.
18. Six oval portholes.

Aft Deck Area

19. FRP Curved seat with cushions at aft. deck.
20. Teak cockpit table.
21. Comfortable stairs from aft deck to flybridge.
22. Two steps down to dive/swim platform.

23. Cockpit lockers for storage.
24. 2 side boarding doors
25. Second location bases for aft. deck table
26. S/S transom door with Horizon Logo
27. Dimmer switch for Aft. deck ceiling lighting

Swimming Platform Area

28. Built-in shower with hot/cold water.
29. Swim ladder on STBD side.
30. S/S safety rail on swim platform

Light

31. LED courtesy lights.
32. LED bulwark w/ flush mounted deck lights
33. LED ceiling lights
34. LED white light with 24VDC transformer on Horizon group logo in P&S.
35. Wiring for boat name on transom.
36. AQUA SIGNAL navigation lights.
37. Cockpit down lights.

C. Flybridge:

1. Non-skid flybridge cambered deck with ample drainage.
2. Flybridge Carpet
3. Three Fixed Glass Front Windscreens with 1 x Washer/Wiper
4. Seacrylic side and Aft Enclosures
5. Flybridge Fully Airconditioned
6. Built in BBQ
7. Helm station with stainless wheel and instrument console.
8. Single STIDD helm chair
9. FRP Arch & FRP Hardtop.
10. Wet bar package:
 - o FRP module bar with sink, with hot and cold water.
 - o DC fridge in bar.
11. FRP table with seating.
12. Sunning bed/ Bench Seat stb side of helm console with cushions
13. Ample locker space for storage.
14. ES1000 Steelhead Crane
15. Covers for F/B Seating and console
16. Covers for aft deck seating, aft deck table and flybridge Table

E. Engine Room and Equipments:

1. Sound and heat insulated compartments

2. Delta –T Moisture eliminators for engine rooms.
3. DC 24Volt lights.
4. One AC outlet.

F. Electrical system:

General

1. Color-coded wiring for easy identification.
2. Premium DC distribution board with switches, voltmeter and amp meter.
3. Outlets in Salon / bar / galley / cabins / fly-bridge / aft deck / engine room.
4. Vimar switches for lights and electrical outlets.

AC/DC Main Power System

5. AC power supply from generator / shore power.
6. Selector switch for AC power supply.
7. Remote panel for generator.
8. Four AGM Batteries for engine & generator start up.
9. Two AGM Batteries for ship's service power.
10. BEP battery switch.
11. One battery charger for all batteries.
12. One inverter 3.0 KW.
13. Premium AC panel with switches

Shore Power System

14. Glendenning shore power 50Amp connector with 100ft cord.

G. Mechanical system:

Fuel and Lube Oil System

1. Dual Racor 900FG filters for both engines.
2. One oil change pump for engines, generator and Gearboxes.

Fresh Water System

3. 270 Gal of water tank integral to hull.
4. Color coded piping for easy identification.
5. Marine grade lines for fresh water system
6. One 17 Gal/110V or 220V water heater.
7. 2 x High volume 24V fresh water pump with accumulator tank.
8. Fresh water washdown for anchor.
9. Fresh Water Washdown on Aft Deck.

10. Sanitary System

11. 2 x 30 Gal of holding tank integral to hull
12. Electric fresh water flush toilets, pumps with Y valve for automatic discharge. and dock side pump out (2).

Bilge Water System

13. 4x electric 24V bilge pumps.
14. High level bilge water alarm.

Fire Safety System

15. One Seafire automatic/manual fire extinguisher in each engine room.

Air Conditioning System

16. Marine Air –central air conditioning for each cabins and salon.
17. Air Cond. Self cleaning system
18. Hyd. Trim tab system

H. Interior Design and Equipment:

Interior Finish

1. HardWood flooring.
2. Tempered safety glass windows.
3. Soft furnishings including roman blinds and accent wood finishing.

Heads and Showers General

4. Wood floor.
5. Corian countertops.
6. Fabric blind over large window.
7. Portlights for ventilation.
8. Basin, cabinets and mirrors.
9. Walk-in separate shower.
10. Linen Cupboard inboard of the M/S shower.
11. Separate toilet.
12. Lights in Overhead.
13. Extractor fan.

Saloon

14. Salon seating covered in fabric.
15. Cabinet for Crystal Glasses.
16. 42" TV in Salon.
17. Two hatches with screen on top of salon roof

Galley/ Dinette

18. Wood floor.
19. Carporee Counter tops.
20. Sub Zero 700TCI with Icemaker
21. Double sinks with tap.
22. Custom accent wood carpentry.
23. Custom wooden carpentry for galley, cupboards and counters.
24. Cutlery & crockery drawers.
25. Pot drawer & spice drawers.
26. Additional storage drawers and cupboards.
27. Under counter trash drawer.
28. Fischer Paykel Dishwasher

VIP stateroom:

29. Queen bed, semi walk around.
30. Custom wood accent carpentry.
31. Carpeted floor
32. Deck hatch with screen & opening.
33. Fabric blind over large window.
34. Soft furnishings.
35. Night stands with light switches and outlets.

Port Aft guest stateroom:

36. Custom wood accent carpentry.
37. Carpeted floor.
38. Opening port lights in hull side.
39. Soft furnishings.
40. Twin Bunks with insert Queen size Bed
41. Storage beneath bed.
42. Cabin lights.
43. Shared bathroom with VIP cabin.

Master Stateroom

44. Custom carpentry for accent finishing.
45. Carpeted floor.
46. Deck hatch with screen & opening.
47. Fabric blinds over large window
48. Queen size bed, semi walk around.
49. Large full height closets.
50. Closets for linens / towels and clothes.
51. Cabin lights.
52. Night stands with light switches and outlets.

Galley

53. GE- 4 burner Elec. cook top.
54. Extractor over cooktop.
55. GE Microwave / Convection oven.
56. Sub Zero 700TCI refrigerator w/ freezer and Icemaker.

1. Navigation & Instrumentation: & Audio Video Equipment:

1. 2 x Garmin 8215 15" touch screen chart plotter with GPS antenna on Flybridge.
2. Garmin Auto pilot.
3. AIS
4. Garmin GMR 404 4ft open array 48 mile radar.
5. 2 x Garmin GSD 26 Depth transducers.
6. Additional GM120 display
7. Garmin VHF 200 on flybridge.
8. Garmin XM weather and Radio.
9. Sunshin Spotlight on Flybridge
10. Fusion UD750 Stereo on Flybridge
11. Sirius XM Module and Antenna
12. Fusion 51600 Amp
13. JL Audio Sub woofer & 4 x 7" JL Audio Speakers on Flybridge
14. Sonos Connect on Flybridge
15. Sonos Connect on Aft Deck with 2 x 7" JL Audio Speakers
16. Sonos Connect on Bow with 2 x 7" JL Audio Speakers
17. Sonos Playbar in Salon with 2 x Play 1 speakers and Sub woofer
18. Cisco Linksys router in Salon
19. Sonos Playbar in Master Cabin
20. 48" Samsung LED TV in Salon
21. 32" Samsung LED TV in Master
22. 32" Samsung LED TV in VIP
23. KVH HD7 Satellite TV with Dummy Dome
24. Apple TV in all Cabins
25. Bluray in Salon and Master
26. Sat TV displays on Flybridge Garmin
27. Cradlepoint Cellular Internet

1. 1. Additional Equipment:

1. Aft Deck Sun Awning
2. Bow Deck Cushions
3. Flybridge Clear Enclosure
4. 700 Gal/day Water-maker

Исключения

При продаже яхты исключаются личные вещи владельца.

Отказ от ответственности

Компания предоставляет описание судна или яхты добросовестно, но не может гарантировать точность этой информации, а также не ручается за техническое состояние. Покупатель должен проинструктировать своих агентов или оценщиков исследовать представленную информацию более подробно, по собственному желанию. Продажа судна или яхты, изменение цены или снятие с продажи будет происходить без предварительного уведомления.

ФОТОГРАФИИ

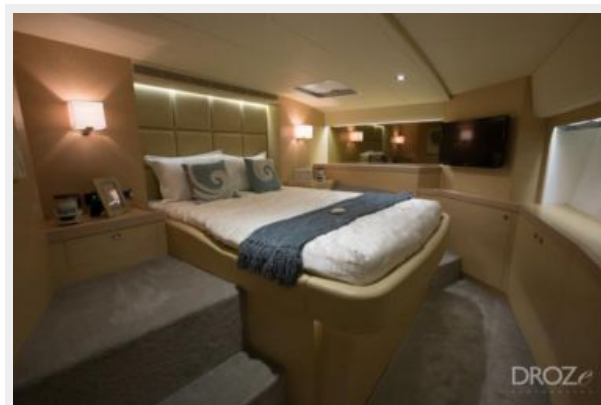
Salon Looking Aft



360 Degree View



Master Stateroom



Master Bathroom



VIP Stateroom



VIP Bathroom



At Anchor



Flybridge Deck



Stern with Toys



Aft Deck



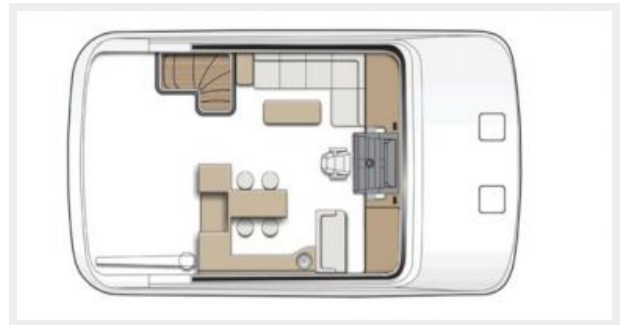
Sunbeds on Foredeck



Profile



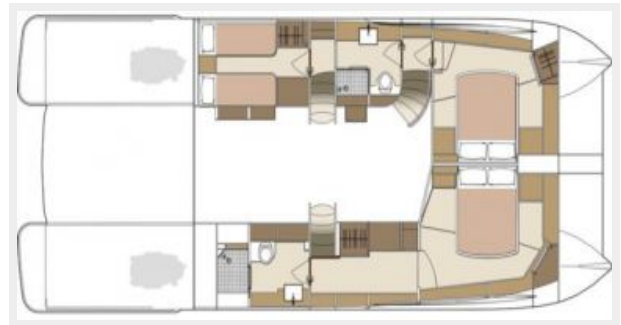
Flybridge Layout



Salon Layout



Cabin Layout



КОНТАКТЫ

Андрей Шестаков (Andrey Shestakov) – ведущий яхтенный брокер отдела продаж яхт и судов компании Shestakov Yacht Sales Inc. Официальный представитель Shestakov Yacht Sales Inc. для русскоговорящих клиентов в центральном офисе компании в Майами/Форт Лодердейл/Флорида/США.

Контактная информация

Email: andrey@shestakovyachtsales.com

Web: shestakovyachtsales.com

Телефоны

Краснодарский край: **+7(918)465-66-44**

США, Майами, Флорида: **+1(954)274-4435**

Время работы

Понедельник – Суббота: **9:00 - 21:00**
EDT

Воскресенье: **Закрето**

Адрес



Harbour Towne Marina, 850 NE 3rd St,
STE 213, Dania, FL 33004