

UN BUON ANNO — AZIMUT



Судостроитель: [AZIMUT](#)

Год постройки: 2015

Модель: Моторная яхта

Цена: **ЦЕНА ЯХТЫ ПО ЗАПРОСУ**

Местонахождение: United States

Длина общая: 55' 0" (16.76m)

Ширина: 15' 7" (4.75m)

Макс. осадка: 3' 9" (1.14m)

Крейс. скорость: 30 Kts. (35 MPH)

Макс. скорость: 34 Kts. (39 MPH)

Купить **UN BUON ANNO — AZIMUT** а также выбрать подходящую вам яхту из нашего каталога яхт вам поможет опытный яхтенный брокер Андрей Шестаков. На сегодняшний день компания **Shestakov Yacht Sales Inc.** имеет большое количество яхт в собственном списке продаж, а также тесно сотрудничает со всеми крупными яхтенными производителями по всему миру.

Для того чтобы купить яхту **UN BUON ANNO — AZIMUT** а также проконсультироваться по любому вопросу связанному с покупкой, продажей, чартером яхт позвоните по телефону **+7(918)465-66-44**.

ОГЛАВЛЕНИЕ

ОГЛАВЛЕНИЕ	2
ХАРАКТЕРИСТИКИ	6
Основная информация	6
Размеры	6
Скорость, вместимость и масса	6
Размещение	6
Корпус и палуба	6
Информация о двигателе	7
ПОДРОБНОЕ ОПИСАНИЕ	8
Description	8
Options / Upgrades	8
Tender Info	9
Bow	9
Walk arounds	9
Cockpit	9
Platform and garage	10
Wheelhouse Equipment	10
Saloon / Dinette / Galley	10
Owner's Cabin	10
Owner's Head	11
VIP Cabin	11
Guest Cabin	11
VIP / Guest heads	11
Crew Cabin	12
Crew Head	12
Electric System	12
Lights and sockets	12
Electronic navigation instruments	13

Fire extinguishing system	13
Fuel System	13
Fresh Water System	13
Black Water System	13
Gray Water System	14
Sea Water System	14
Ventilation	14
Other Systems	14
Air Conditioning System	14
Disclaimer	14
Исключения	15
Отказ от ответственности	15
ФОТОГРАФИИ	16
Bow	16
Profile	16
Profile	16
Bow	16
Anchor	16
Sunpad	16
Sunpad	17
Sunpad converted	17
Sunpad converted	17
Cockpit	17
Cockpit	17
Cockpit	17
Stern thruster	18
Grill	18
Cockpit	18
Cockpit	18

Swimplatform	18
Sunshade	18
Crew quarters	19
Cockpit	19
Crew quarters	19
Crew quarters	19
Crew quarters	20
Forward stateroom	20
Forward stateroom	20
Forward stateroom	20
Guest head	21
Guest head	21
Guest stateroom	21
Guest stateroom	21
Helm	22
Helm	22
Washer dryer	22
Helm	22
Master stateroom	23
Master stateroom	23
Master stateroom	23
Master stateroom	23
Master head	23
Salon	23
Master head	24
Galley	24
Galley	24
Galley	24
TV	25

Sink / Cootop	25
Sunshade	25
Cockpit	25
Transom	26
Salon seating	26
Transom	26
Garage door with tender	26
Engine room	27
Garage door with tender	27
Engine room	27
Engine room	27
Engine room	28
Engine room	28
Engine room	28
КОНТАКТЫ	29
Контактная информация	29
Телефоны	29
Время работы	29
Адрес	29

ХАРАКТЕРИСТИКИ

Основная информация

Тип судна: Моторная яхта

Модельный год: 2015

Год постройки: 2015

Страна: United States

Размеры

Длина общая: 55' 0" (16.76m)

Ширина: 15' 7" (4.75m)

Макс. осадка: 3' 9" (1.14m)

Скорость, вместимость и масса

Крейс. скорость: 30 Kts. (35 MPH)

Макс. скорость: 34 Kts. (39 MPH)

Вместимость воды: 156 Gallons

Объем топливного бака: 423 Gallons

Размещение

Всего кают: 3

Всего ком. состава: 2

Каюты экипажа: 1

Койки экипажа: 1

Комм. состав экипажа: 1

Корпус и палуба

Материал корпуса: Fiberglass

Цвет корпуса: Silver

Информация о двигателе

Двигатели: 3

Производитель: Volvo

Модель: IPS 600

Тип топлива: Diesel

ПОДРОБНОЕ ОПИСАНИЕ

Description

The Azimut 55 S truly checks all the boxes. UN BUON ANNO has been captain maintained since new, she is truly stunning and has luxury, Sporty Performance, and Breathtaking views. She is a true Sport Yacht and is an absolute joy to drive. The Triple Volvo Penta 600's produce a whopping 1305 Horsepower to move you swiftly from port to port in ultimate comfort. Partner that with Volvo's easy to use joystick that makes docking a breeze and you will quickly see why this Yacht is such a pleasure to own.

Options / Upgrades

Fusion twin amp stereo with 2 zones cockpit and forward with Bluetooth interface.

3 Bose surround sound systems installed, in the main salon, owners stateroom and VIP stateroom.

Top of the line Raymarine Platinum Electronics package, with twin large GS screens...with all the options including, GPS, Chart plotter, Radar, twin depth gauges, Sirius Weather/radio, Upgraded Lighthouse software and platinum Navionics card.

Volvo Dynamic Position System to keep the boat in one position based on GPS.

Bow thruster Cockpit cabinet with BBQ, icemaker and trash compartment Cockpit chair Cockpit docking-maneuvering station Co-pilot seat at main helm Crew Cabin with Air Conditioning Dynamic positioning system - skyhook Electric awning for aft cockpit Electric shade for salon sunroof Flagpole Led lighting for exterior and interior with Dimmers in salon and cockpit Mosquito nets for portholes One glendenning cable master Raymarine Platinum Package Safe in master cabin Salon Dinette conversion Set of linen - Crew cabin Sunbathing cushions on bow Sunroof with glass panels Teak deck on swim platform Teak on garage door/second swim platform Teak on side decks Telescopic gangway Two floodlights installed on aft flybridge Washer-dryer combo unit Wooden floor in salon, dinette and helm stat Auto Dynamic trim Volvo interceptor Chain washing system Double Racor filters for main engines Spare conduits connecting engine room/ wheelhouse/radar arch Electric mooring winches in cockpit Tender hauling-launching system Miele microwave combo and cooktop Chaincounter control at main helm Painted Hull Decor upgraded Forward sunpad cover Aft bench seat cover Table cover Forward bench seat cover

Tender Info

William Turbojet 285 Jet Tender.

Water skiing/ boarding or just for cruising, also just fully serviced by Williams. This is a great tender that defies its size, the Turbojet 285 is designed to easily fit into the tender garage.

Bow

UPGRADE: Sunbathing cushions Anchor chain housing Chain washing pump system with direct water jet on the chain DELTA 25 kg anchor 75-meter high-resistance gaged chain, diameter 10 mm Stainless steel anchor roller 1700 W winch 2 cleats (one per side) Fore sunbed area with two handrails and forward-facing sofa in GRP

Walk arounds

Refueling plugs - 1 plug per side Fresh water filling plug, 1 "Water" plug without cover, starboard side Black water suction points, 1 "Waste" outlet water plug without cover, port side Intermediate cleats GRP non-slip floor (knurled)

Cockpit

UPGRADE: Cockpit cabinet with BBQ, icemaker and trash compartment **UPGRADE:** Cockpit chair **UPGRADE:** Cockpit docking-manouvering station **UPGRADE:** Electric awning for aft cockpit **UPGRADE:** Flagpole **UPGRADE:** Electric mooring winches in cockpit Aft access via two passages - one from shore (starboard side, where there is the gangway), and the other for platform access (port side) Saloon door in stainless steel with 4 panels (3 sliding) Cockpit bench in GRP, built into the deck Engine room access via cockpit bench, port side Engine unloading door Teak floor Mooring stations Lighting with watertight spotlights on ceiling Fire extinguisher controls with protective Plexiglas door Flexible fender holder in the cockpit bench Lockers for lines below the mooring stations (1 per side) Storage locker fore of the cockpit bench (starboard

side) Bottle-holder / cup holder locker on left side

Platform and garage

UPGRADE: Tender hauling-launching system **UPGRADE:** Telescopic gangway **UPGRADE:** Teak deck on swim platform **UPGRADE:** Teak on garage door/second swim platform GRP non-slip floor (knurled) Tip-up platform acting as door for garage/sunbed platform/ramp for tender haulage Platform dimensions: - closed: 845 x 2483mm - open: 1820 x 2483mm Shore power socket on the upper port side of the top step, protected by a cover 2 handrails on sides of boarding gates External shower on port side Walkway lights on the steps of the cockpit access ladder Manual telescopic 4-rung swimming ladder in stainless steel, with removable handles located in the garage Aft rub-rail with stainless steel insert Courtesy light inside the garage Garage sized to house a tender measuring: - max. length 2850mm - max. width: 1850mm aft, 1750mm fore - max. height: 900mm - electric winch for tender: PTG 1000 350W 24V

Wheelhouse Equipment

UPGRADE: Chaincounter control at main helm **UPGRADE:** Bow thruster **UPGRADE:** Co-pilot seat at main helm **UPGRADE:** Dynamic positioning system - skyhook **UPGRADE:** Raymarine Platinum Package Helm seat Compartment for crockery under the seat Manually operated window Steering wheel The wheelhouse includes: - Engine controls - Miscellaneous switches (horn, navigation lights, windscreen wipers, etc.) - 12V cigarette lighter socket - Raymarine easy cruising system - 7" Volvo display - 3 rpm indicators - 3 engine start/stop keys

Saloon / Dinette / Galley

UPGRADE: Electric shade for salon sunroof **UPGRADE:** Led lighting for exterior and interior with Dimmers in salon and cockpit **UPGRADE:** Salon Dinette conversion **UPGRADE:** Sunroof with glass panels **UPGRADE:** Wooden floor in salon, dinette and helm stat **UPGRADE:** Miele microwave combo and cooktop A single room, with the galley on starboard side Tip-up flap in galley, to hide the appliances when they are not being used 4-hob range 20-liter microwave oven 1 stainless steel sink 130-liter refrigerator 48-liter freezer "C"-shaped sofa with 4 seats on port side Openable hard top (controls in wheelhouse). Carpeted floor Saloon door blind Halogen lighting Fixed table with storage area in the base Provision for TV system with aerial Stainless steel handrail at top of stairs leading down to the cabins Ceiling and walls covered in fabric

Owner's Cabin

UPGRADE: One glendenning cable master Located midship Diagonal double bed with headboard on starboard side Foldaway bed for accessing the large locker below Shelf beside the bed Vanity table with armchairs on the left side Lighting with spotlights and LED strips 2

openable portlights, one per side (rectangular portlight inserted in the window) Rectangular hull windows Direct access to head 1 mirror on the vanity table 1 mirror in the wardrobe Aluminum Venetian blinds on the windows Fabric bulwark upholstery Fabric ceiling panels Carpeted floor 2 wall lights on headboard 2-panel wardrobe with shelves behind the headboard Walkway lights on the cabin access steps Sockets Provision for TV system with aerial

Owner's Head

Located forward of the owner's cabin, on port side Access from owner's cabin Top and oval washbasin TECMA toilet Chromed mixer tap Separate shower enclosure; flat shower door Shower column and seat in metallic black ABS Wall unit with 2 sliding panels above washbasin Lighting: ceiling light on wall unit, and spotlights in the shower 1 openable portlight with aluminum Venetian blind Flooring and grating in Zebrano wood Forced extraction 1 toilet brush holder 2 clothes hooks 1 soap dispenser 1 toilet roll holder 1 towel rail 1 Plexiglas soap dish in shower

VIP Cabin

Located at the bow Fixed double bed 2 wall units above the side windows 1 wardrobe with hanger bar on port side 1 wardrobe with shelves on starboard side Shelf on the sides of the bed, against the bulwark 2 under-bed lockers 2 wall lights on headboard Carpeted floor Fixed panoramic windows Rectangular hatchway leading onto fore sunbed area Aluminum Venetian blinds on the windows Spotlights Fabric bulwark upholstery Ceiling with fabric panels Direct access to VIP head Sockets

Guest Cabin

Located on starboard side 2 single beds, fixed 1 central bedside table between the beds 1 wardrobe with hanger bar and shelves Under-bed lockers Ceiling with fabric panels Fabric bulwark upholstery 1 openable round portlight Aluminum Venetian blind Carpeted floor Halogen spotlights lighting Wall lights on headboard

VIP / Guest heads

Positioned abaft of the VIP cabin, on port side Direct access from the VIP cabin or from the corridor TECMA toilet Top in Zebrano wood and oval washbasin Chromed mixer tap 3-door round shower, not separated Shower column in metallic black ABS Wall unit with 2 sliding panels above washbasin Lighting: ceiling light on wall unit, and spotlights in the shower 1 round

openable portlight with aluminum Venetian blind Flooring and grating in Zebrano wood Forced extraction 1 toilet brush holder 2 clothes hooks 1 soap dispenser 1 toilet roll holder 1 towel rail 1 Plexiglas soap dish in shower

Crew Cabin

UPGRADE: Air conditioning Access via rectangular hatchway with lock closure Located in the fore part of the boat 1 single tip-up bed 1 openable round portlight on starboard side 2 wardrobes (1 on each bulwark) 2 flexible removable bags Spotlights lighting 1 socket 220V

Crew Head

TECMA toilet Shower with anti-spray curtain Shower grating Washbasin with flexible hose tap for shower

Electric System

Main characteristics: The voltage levels on board are: 220V – 50 Hz A.C. / 24V (12V for VHF equipment and cigarette lighter socket) 1 QDC1 = Distribution board 24V DC, engine room 1 QDC2 = Auxiliary distribution board 24V DC, engine room 1 QDC3 = Folding panel, guest cabin 1 QAC1 = Main board 120/230V AC, engine room 1 QAC2 = Support distribution board 220V Folding panel, guest cabin 1 HPAC = Utilities control panel 120/230V AC, under the dashboard 1 HPDC = Utilities panel 24V DC, under the dashboard Steering system = electric, integrated in the IPS drive Trim tabs = 2 electric trim tabs 24V, 16" x 17" AISI 316 Cockpit utilities panel: - Service battery cut-out button - Engine 1 battery cut-out button - Engine 2 battery cut-out button - Engine 3 battery cut-out button - Generator battery cut-out button

Galvanic current insulation zinc cathodes

Generator A 3.5 kW - 220V / 50 Hz generator is provided

Shore power sockets 1 service socket 220V – 50A

Batteries Services: 6 connected batteries, each delivering 12V 90 Ah Engines: 6 batteries (2 for each engine), each delivering 12V 70 Ah Generator: 1 battery delivering 12V 70 Ah Electronic battery charger 60A (220 / 110V) Battery charger for generator 10A (220 / 110V)

Lights and sockets

AC sockets: EU type DC sockets: cigarette lighter type (wheelhouse) 24V lighting (halogen) 24V watertight external lights TV socket in saloon and owner's cabin

Electronic navigation instruments

UPGRADE: Auto Dynamic trim Volvo interceptor **UPGRADE:** Chain washing system
UPGRADE: Double Racor filters for main engines **UPGRADE:** Spare conduits connecting engine room/ wheelhouse/radar arch

Wheelhouse: Raymarine Bronze Package

Bilge system 4 24V electric pumps (3 in engine room, 1 in owner's cabin) with bulwark outlet. 1 24V electric bilge pump 2 manual emergency pumps; 1 in engine room and 1 in owner's cabin, with bulwark outlet. level alarms on alarm display

Fire extinguishing system

Activation handles in cockpit, and emergency key 1 RINA-approved cylinder with nozzles on engines

Fuel System

2 stainless steel tanks with connections (800 liters each, for a total of 1600 liters). Electronic level gage Optical fuel level gage on starboard tank in engine room 3 single settling filters for engines 1 filter for generator 2 refueling plugs on walk arounds 2 vents on bulwark Remote diesel shut-off (engine and generator) via 24V solenoid valve Pipe connecting the two tanks to adjust the fuel level Fuel drawing tap

Fresh Water System

A 590-liter polyethylene tank beneath the floor of the cabin access corridor Water filling from bow (starboard side) Level sensor with electronic gage in wheelhouse 1 tank vent on port bulwark Pressure pump 60-liter Sigmar Compact water heater 220V - 800W in engine room Hot/cold water line: all heads, galley, external platform shower head; Cold water only in engine room and cockpit cabinet (if fitted). Fresh water toilet flushing System that can be isolated by ACORN manifolds

Black Water System

1 175 l tank in polyethylene under VIP cabin's floor Level sensor (2 levels) 1 tank vent with anti-odor filter on starboard bulwark 1 FEIT PVM 0.2 macerator pump under the guest cabin floor Suction point from walk around (port side) Outboard discharge under VIP cabin bed Tecma toilet (with macerator pump). All the toilets discharge into a tank (including the crew cabin toilet, if envisaged).

Gray Water System

1 175-liter polyethylene tank beneath the floor of the cabin access corridor Level sensor (2 levels) with alarm indicator in wheelhouse Water discharge: from tank (automatic / manual) below VIP cabin bed FEIT membrane pump below guest cabin floor

Sea Water System

Engine cooling system: dynamic seawater intakes integrated in IPS system for port and starboard engines and dynamic seawater intake in keel with ball valve located fore of the port engine which serves the central engine. Generator cooling system: submerged outlet: 1 dynamic 1" seawater intake with filter and valve Air conditioning cooling system: submerged outlet: 1 dynamic 1" seawater intake with filter and valve Chain washing pump: seawater

Ventilation

Head ventilation: 24V forced air extraction in owner's head, and natural intake in VIP head Engine room: - Natural air intake through hull bulwark intake (1 per side) - Forced extraction: with 2 fans 24V (1 per side)

Other Systems

Openable roof: the roof is moved by means of two hydraulic cylinders fixed to the flybridge upper fwd part and activated via a 24V electro-hydraulic control unit located in the engine room. The roof movement is managed with the aid of buttons in the wheelhouse. Garage door: the garage door is moved by means of two hydraulic cylinders fixed to the deck and controlled via a 24V electro-hydraulic control unit. The control unit for the door is the same one used to control the gangway. The door movement is managed by a panel located on the starboard side of the cockpit bench (gangway access side)

Air Conditioning System

WORLD SPEC water system version 1 compressor in engine room (total 72 kBTU) 1 seawater pump with relevant seawater intake in engine room Distribution: - Saloon + Galley + Dinette 2 x 14800 BTU - Wheelhouse 16000 BTU - Owner's cabin 12500 BTU - VIP cabin 12500 BTU - Guest cabin 6200 BTU - Crew cabin 4480 BTU - A/C cut-out in owner's head

Disclaimer

The Company offers the details of this vessel in good faith but cannot guarantee or warrant the accuracy of this information nor warrant the condition of the vessel. A buyer should instruct his agents, or his surveyors, to investigate such details as the buyer desires validated. This vessel is offered subject to prior sale, price change, or withdrawal without notice.

Исключения

При продаже яхты исключаются личные вещи владельца.

Отказ от ответственности

Компания предоставляет описание судна или яхты добросовестно, но не может гарантировать точность этой информации, а также не ручается за техническое состояние. Покупатель должен проинструктировать своих агентов или оценщиков исследовать представленную информацию более подробно, по собственному желанию. Продажа судна или яхты, изменение цены или снятие с продажи будет происходить без предварительного уведомления.

ФОТОГРАФИИ

Bow



Profile



Profile



Bow



Anchor



Sunpad



Sunpad



Sunpad converted



Sunpad converted



Cockpit



Cockpit



Cockpit



Stern thruster



Grill



Cockpit



Cockpit



Swimplatform



Sunshade



Cockpit



Crew quarters



Crew quarters



Crew quarters



Crew quarters



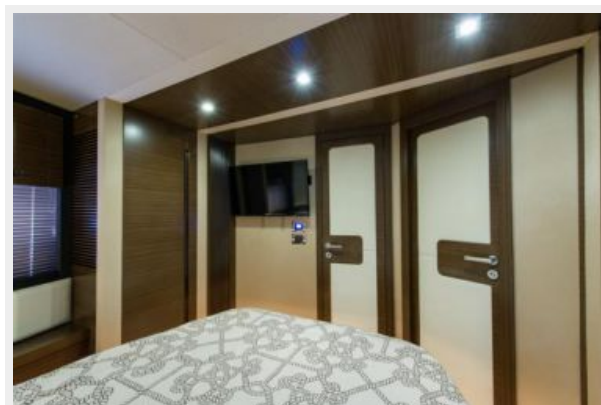
Forward stateroom



Forward stateroom



Forward stateroom



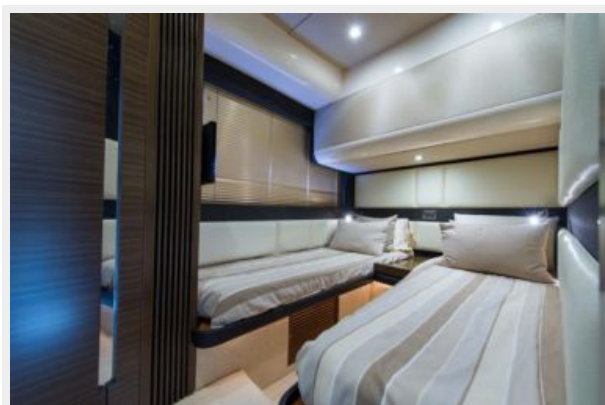
Guest head



Guest head



Guest stateroom



Guest stateroom



Helm



Helm



Helm



Washer dryer



Master stateroom



Master stateroom



Master stateroom



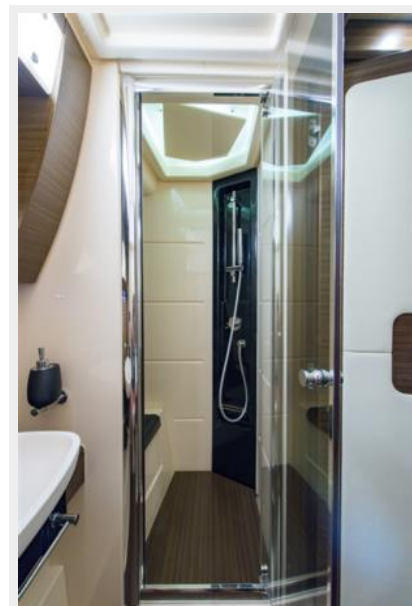
Master stateroom



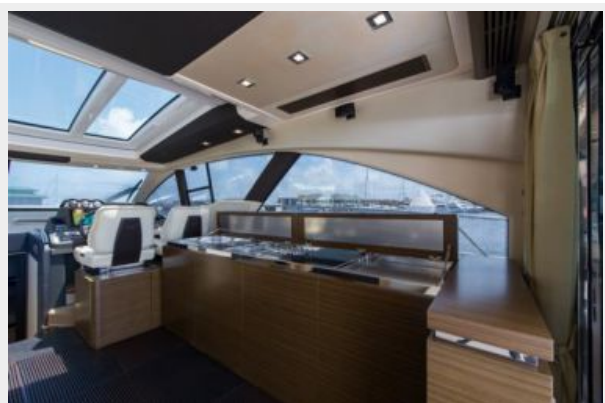
Salon



Master head



Galley



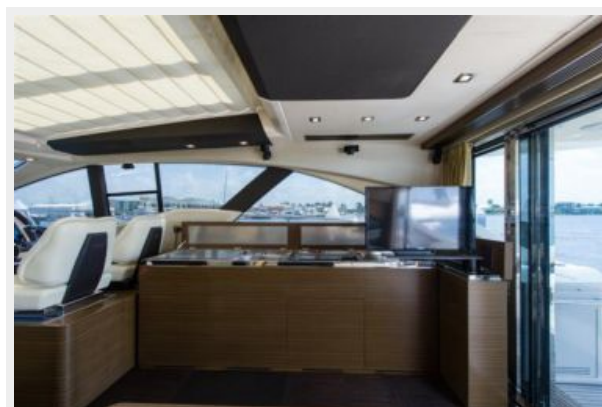
Master head



Galley



Galley



TV



Sink / Cootop



Sunshade



Cockpit



Salon seating



Transom



Transom



Garage door with tender



Garage door with tender



Engine room



Engine room



Engine room



Engine room



Engine room



Engine room



КОНТАКТЫ

Андрей Шестаков (Andrey Shestakov) – ведущий яхтенный брокер отдела продаж яхт и судов компании Shestakov Yacht Sales Inc. Официальный представитель Shestakov Yacht Sales Inc. для русскоговорящих клиентов в центральном офисе компании в Майами/Форт Лодердейл/Флорида/США.

Контактная информация

Email: andrey@shestakovyachtsales.com

Web: shestakovyachtsales.com

Телефоны

Краснодарский край: **+7(918)465-66-44**

США, Майами, Флорида: **+1(954)274-4435**

Время работы

Понедельник – Суббота: **9:00 - 21:00**
EDT

Воскресенье: **Закрито**

Адрес



Harbour Towne Marina, 850 NE 3rd St,
STE 213, Dania, FL 33004