

ENCORE



Year Built: 2011

Model: Motor Yacht

Price: PRICE ON APPLICATION

LOA: 97' (29.57mm)

Beam: 21.5

Max Draft: 6' 4" (1.93mm)

Cruise Speed: 10 Knots Kts. (12 MPH)

Max Speed: 22 Knots Kts. (25 MPH)

Our experienced yacht broker, Andrey Shestakov, will help you choose and buy a yacht that best suits your needs **EnCore** — n/a from our catalogue. Presently, at Shestakov Yacht Sales Inc., we have a wide variety of yachts available on our sale's list. We also work in close contact with all the big yacht manufacturers from all over the world.

If you would like to buy a yacht **EnCore** — n/a or would like help answering any questions concerning purchasing, selling or chartering a yacht, please call **+1(954)274-4435**

TABLE OF CONTENTS

TABLE OF CONTENTS	2
SPECIFICATIONS	4
Overview	4
Basic Information	4
Dimensions	4
Speed, Capacities and Weight	4
Accommodations	4
Hull and Deck Information	5
Engine Information	5
PHOTOS	6
Layout Drawing	6
General Arrangement Schematic	6
Master Cabinets and Entertainment	6
Master Stateroom	6
Master Ensuite Bath	7
Salon	7
Salon	7
Dining Area	7
Full Size Galley	7
Enclosed Helm Console	7
Helm Seating	8
Flybridge Helm	8
Bow Seating with Cushions, Table and Umbrella	8
Flybridge Accomodations	8
Full Size Stern Door Garage Access	8
Submergible Swim Platform	8
Large Windows	9
Stern Aft Quarter	9

Stern View	9
Aft Deck Seating	9
Starboard Bow Quarter	9
Cruising into the Sunset	9
Port Side	10
CONTACTS	11
Contact details	11
Telephones	11
Office hours	11
Address	11

SPECIFICATIONS

Overview

BOAT IS EN ROUTE TO TAHITI

The Horizon 97 offers the best of both worlds with a unique blend of interior and exterior space. A 21'6" beam allows for 4 spacious staterooms with en-suite heads and offers an optional country kitchen or on-deck master design on the main deck. The RP97 also provides an enclosed helm area as well as a full exterior flybridge deck with outside entertaining areas and tender storage, ensuring you will cruise in ultimate luxury with family and friends.

This vessel is being offered for sale, at a very attractive price for age and condition. ENCORE has been fastidiously maintained!

Basic Information

Category: Motor Yacht

Sub Category: Flybridge

Model Year: 2011

Year Built: 2011

Dimensions

LOA: 97' (29.57mm)

Beam: 21.5

Max Draft: 6' 4" (1.93mm)

Speed, Capacities and Weight

Cruise Speed: 10 Knots Kts. (12 MPH)

Max Speed: 22 Knots Kts. (25 MPH)

Water Capacity: 450 Gallons

Fuel Capacity: 4000 Gal Gallons

Accommodations

Total Cabins: 4

Total Heads: 4

Hull and Deck Information

Hull Material: Fiberglass

Hull Configuration: Semi-Displacement

Hull Color: White

Engine Information

Engines: 2

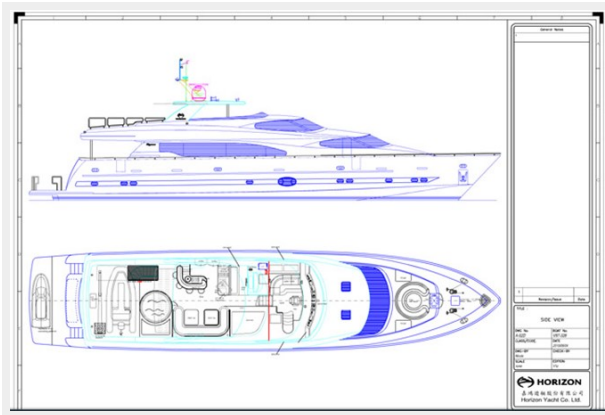
Manufacturer: CAT

Engine Type: Inboard

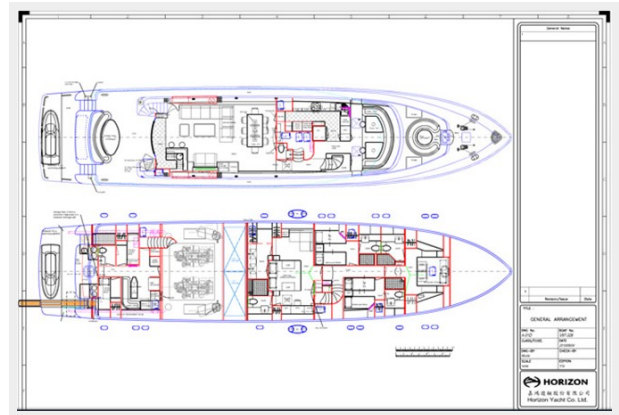
Fuel Type: Diesel

PHOTOS

Layout Drawing



General Arrangement Schematic



Master Cabinets and Entertainment

Master Stateroom



Master Ensuite Bath



Salon



Salon



Dining Area



Full Size Galley



Enclosed Helm Console



Helm Seating



Flybridge Helm



Flybridge Accommodations



Bow Seating with Cushions, Table and Umbrella



Full Size Stern Door Garage Access



Submergible Swim Platform



Large Windows



Stern Aft Quarter



Aft Deck Seating



Stern View



Cruising into the Sunset



Starboard Bow Quarter



Port Side



CONTACTS

Andrey Shestakov, leading yacht broker of the sales department of Shestakov Yacht Sales Inc. Shestakov Yacht Sales Inc., the official representative of the Miami/Fort Lauderdale FL headquarters.

Contact details

Email: andrey@shestakovyachtsales.com

Web: shestakovyachtsales.com/en/

Telephones

USA: +1(954)274-4435

Office hours

Monday – Saturday: **9:00 - 21:00** EDT

Sunday: **closed**

Address



Harbour Towne Marina, 850 NE 3rd St,
STE 213, Dania, FL 33004