

WI BOAT — LAGOON



Builder: LAGOON

Year Built: 2005

Model: Catamaran

Price: PRICE ON APPLICATION

Location: United States

LOA: 44' 0" (13.41m)

Beam: 25' 3" (7.70m)

Max Draft: 4' 3" (1.30m)

Our experienced yacht broker, Andrey Shestakov, will help you choose and buy a yacht that best suits your needs **Wi Boat — LAGOON** from our catalogue. Presently, at Shestakov Yacht Sales Inc., we have a wide variety of yachts available on our sale's list. We also work in close contact with all the big yacht manufacturers from all over the world.

If you would like to buy a yacht **Wi Boat — LAGOON** or would like help answering any questions concerning purchasing, selling or chartering a yacht, please call **+1(954)274-4435**

TABLE OF CONTENTS

TABLE OF CONTENTS	2
SPECIFICATIONS	3
Overview	3
Basic Information	3
Dimensions	3
Speed, Capacities and Weight	4
Accommodations	4
Hull and Deck Information	4
Engine Information	4
DETAILED INFORMATION	5
Construction	5
Electronics	5
Sails	5
Inside Equipment	5
ENGINE ROOM	5
Electrical Equipment	6
Galley	6
Outside Area	6
Additional Equipment	7
Exclusions	7
Disclaimer	7
PHOTOS	8
CONTACTS	17
Contact details	17
Telephones	17
Office hours	17
Address	17

SPECIFICATIONS

Overview

Wi Boat is 2005 Lagoon with a four stateroom/ 4 head interior.

has had numerous upgrade over the last few years including

New HD digital radar (2018) needs installing

Raymarine multifunction display (2018)

Tender and outboard.

2X 40hp Yanmar engines with saildrives (One engine recently rebuilt)

New main and genoa in 2014

New trampolines in 2014

The boat is presently on the hard at Saunders Boat Yard in Orange Beach, Alabama. It needs work, both on the bottom and interior.

The asking price has been reduced and the owner is looking for offers.

Basic Information

Category: Catamaran

Model Year: 2005

Year Built: 2005

Country: United States

Dimensions

LOA: 44' 0" (13.41m)

LWL: 41' 10" (12.75m)

Beam: 25' 3" (7.70m)

Max Draft: 4' 3" (1.30m)

Clearance: 73' 0" (22.25m)

Speed, Capacities and Weight

Displacement: 23148 Pounds

Water Capacity: 300 Gallons

Fuel Capacity: 225 Gallons

Accommodations

Total Cabins: 4

Total Berths: 5

Total Heads: 4

Hull and Deck Information

Hull Material: Fiberglass

Hull Configuration: Catamaran

Engine Information

Engines: 2

Manufacturer: Yanmar

Model: 4JH4E

Engine Type: Inboard

Fuel Type: Diesel

DETAILED INFORMATION

Construction

- Polyester and vinylester resins
- Balsa core hull, solid laminate underwater line
- Balsa core bridge deck and deck white gelcoat
- Solid laminate inner liners
- Laminated marine plywood bulkheads

Electronics

- Raymarine RD 418 HD Digital Radar New (January 2018)
- New Sun Covers For The Helm Instruments
- AIS 350 New January 2018
- Raymarine E70290 Multifunction Display New January 2018
- Wind Speed and Direction
- Plotter
- GPS
- Autopilot
- VHF
- Navigation Center
- Plotter
- Radio Cockpit Speakers

Sails

- Fully Battened Mainsail
- Furling Genoa

Inside Equipment

- Oven
- Microwave
- Sea Water Pump
- Manual Bilge Pump
- Refrigerator

ENGINE ROOM

- Engine Hatch Has Gas Shocks For Easy Lifting
- 2X 40 Hp Sail Drive Engines
- Dual Lever Engine Controls at The Helm Station
- Soundproof Engine Compartments And Panels
- Raw Water Filters
- Engineroom Lights

Electrical Equipment

- Shore Power Transom Socket
- Inverter
- AC Circuits
- Shore Power Cord
- Electrical Panel With 4 Breakers
- Battery Charge Distribution Relay
- 2 Engine Start Batteries
- 12Volt Outlets

Galley

- Galley In The Main Saloon Area is to the Stbd Side
- Access To The Cockpit Through The Sliding Window
- Double Stainless Steel Sink
- Integrated Dish Drain Area
- Cutlery Drawer
- Storage Under The Sink
- Waste Basket Under The Sink
- 3 Burner Stove

Outside Area

- U Shape For Deck Seating Area
- 2 Aft Storage Lockers
- Large Storage Locker On The Port Side
- Sliding Window Between The Cockpit Area And The Galley
- Storage For Gas Tanks Under The Settee
- Cockpit Lighting
- Bow Railing Going Around The Boat
- Trampoline Fairly New

Additional Equipment

- 1 Forepeak Equipped
- Television
- Trampoline New In 2014
- Genoa New 2014
- Battened Mainsail New In 2014
- Lazy Bag New In 2014
- BBQ Gas Grill New In 2015
- Hot And Cold Water Deck Shower
- Dinghy Semi Rigid Hypalon Apex
- 15 HP Yamaha Engine Enduro Model
- Flybridge With A Bimini

Exclusions

Owner's personal belongings.

Disclaimer

The Company offers the details of this vessel or yacht in good faith but cannot guarantee or warrant the accuracy of this information nor warrant the condition of the vessel. A buyer should instruct his representatives, agents, or his surveyors, to investigate such details as the buyer desires validated. This vessel or yacht is offered subject to prior sale, price change, or withdrawal without notice.

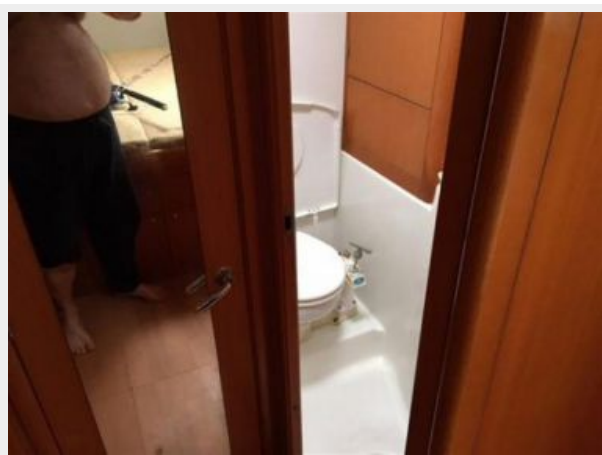
PHOTOS

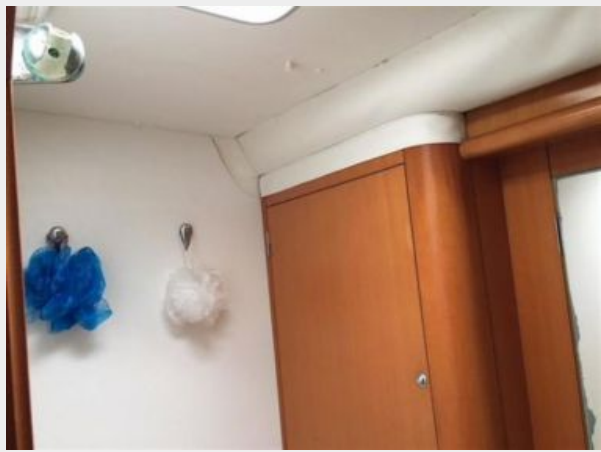


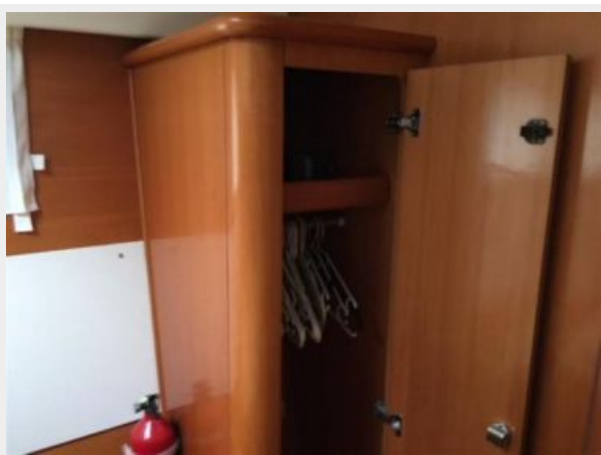


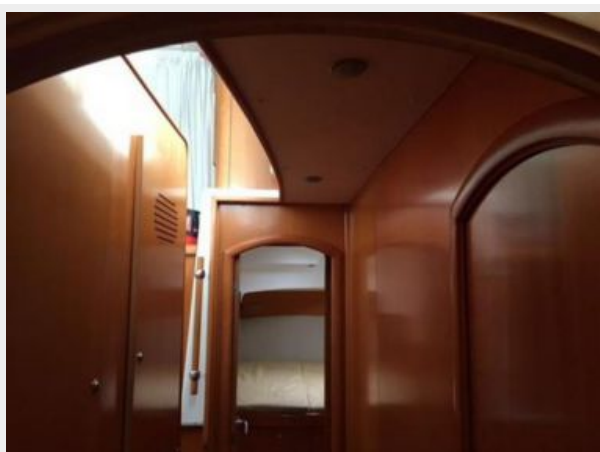
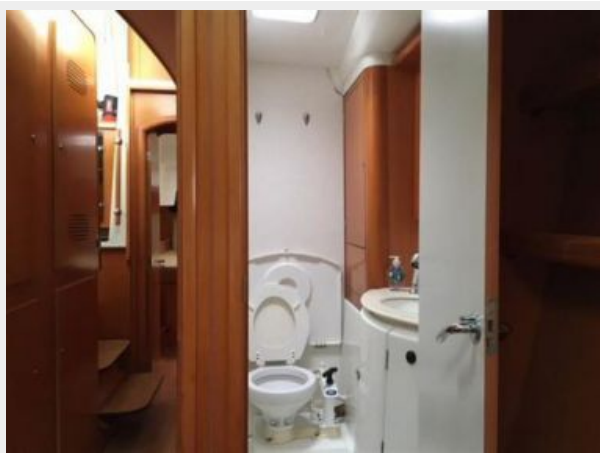














CONTACTS

Andrey Shestakov, leading yacht broker of the sales department of Shestakov Yacht Sales Inc. Shestakov Yacht Sales Inc., the official representative of the Miami/Fort Lauderdale FL headquarters.

Contact details

Email: andrey@shestakovyachtsales.com

Web: shestakovyachtsales.com/en/

Telephones

USA: +1(954)274-4435

Office hours

Monday – Saturday: **9:00 - 21:00** EDT

Sunday: **closed**

Address



Harbour Towne Marina, 850 NE 3rd St,
STE 213, Dania, FL 33004