

# 66FT 2015 GUNBOAT GUNBOAT 66 — GUNBOAT



**Builder:** GUNBOAT

**Year Built:** 2015

**Model:** Catamaran

**Price:** PRICE ON APPLICATION

**Location:** United States

**LOA:** 66' 0" (20.12m)

**Beam:** 28' 3" (8.61m)

**Min Draft:** 2' 3" (0.69m)

**Max Draft:** 15' 9" (4.80m)

Our experienced yacht broker, Andrey Shestakov, will help you choose and buy a yacht that best suits your needs 66ft 2015 Gunboat Gunboat 66 — GUNBOAT from our catalogue. Presently, at Shestakov Yacht Sales Inc., we have a wide variety of yachts available on our sale's list. We also work in close contact with all the big yacht manufacturers from all over the world.

If you would like to buy a yacht 66ft 2015 Gunboat Gunboat 66 — GUNBOAT or would like help answering any questions concerning purchasing, selling or chartering a yacht, please call +1(954)274-4435

---

# TABLE OF CONTENTS

---

TABLE OF CONTENTS	2
SPECIFICATIONS	3
Overview	3
Basic Information	3
Dimensions	3
Speed, Capacities and Weight	4
Accommodations	4
Hull and Deck Information	4
Engine Information	4
DETAILED INFORMATION	5
Manufacture Provided Description	5
Sail Inventory	6
Rigging	7
Electronics	7
Electrical	8
Plumbing	9
Exclusions	9
Disclaimer	9
PHOTOS	11
CONTACTS	17
Contact details	17
Telephones	17
Office hours	17
Address	17

---

# SPECIFICATIONS

---

## Overview

---

Extreme H20 is the most advanced Gunboat 66's ever built. The hull and structure were built in South Africa at the Gunboat yard, and her final construction was done by the legendary California yard Westerly Marine in Santa Ana, California.

Westerly Marine is considered one of the top carbon fiber performance boat builders in the world. They put roughly 56,000 man-hours into completing the project.

The catamaran was designed by Morelli & Melvin. The designers incorporated some cutting edge technology into her design such as the t-rudders, c-foils, and a hybrid electric drive system.

Her sail handling was designed to maximize performance with a shorthanded crew. She is equipped with hydraulic winches and sail controls, and utilizes both furling systems for the head sails.

Her electrical system is setup with lithium batteries, inverters, and a diesel/hybrid drive. This technology allows Extreme H20 to go sailing for the day without firing up the motors, or run the A/C all night long without the use of a generator.

The seller has begun his next project, and is motivated to make Extreme H20 to be the next performance catamaran to sell.

## Basic Information

---

**Category:** Catamaran

**Model Year:** 2015

**Year Built:** 2015

**Country:** United States

## Dimensions

---

**LOA:** 66' 0" (20.12m)

**LWL:** 62' 0" (18.90m)

**Beam:** 28' 3" (8.61m)

**Min Draft:** 2' 3" (0.69m)

**Max Draft:** 15' 9" (4.80m)

---

## Speed, Capacities and Weight

---

**Water Capacity:** 100 Gallons

**Fuel Capacity:** 75 Gallons

---

## Accommodations

---

**Total Cabins:** 4

**Total Heads:** 4

---

## Hull and Deck Information

---

**Hull Material:** Composite

---

## Engine Information

---

**Engines:** 1

**Manufacturer:** Volvo

**Model:** D2-40 Hybrid Drive

**Fuel Type:** Electric

---

# DETAILED INFORMATION

---

## Manufacture Provided Description

---

### Overview

Extreme H2O is the lightest and fastest Gunboat 66. The boat features a fully integrated hybrid system, C foils, T rudders, a Southern Spars rotating wing spar, aft beam traveler, retractable propeller drives, tiller steering for racing and push button mainsheet controls at all steering stations.

State-of-the-art Morrelli & Melvin foils and a powerful sail plan with masthead screecher that sheets to the forward cockpit for light air upwind performance and a full inventory of downwind furling sails make “H2O” an extremely capable catamaran in a large crossover of wind conditions. Speed and performance did not sacrifice the luxury features of this cruising catamaran - which can realize up to 30 knot sailing speeds.

The fully integrated hybrid system will allow you to depart the dock, enjoy a day of sailing and return to the dock without ever having to listen to a diesel motor. Better yet, you can enjoy a tropical night at anchorage with 30,000 BTU of air-conditioning without the noise of a generator.

Completed in 2015 – “Extreme H2O” has already raced to Mexico and Hawaii and back and is fully serviced with a new 3Di raw racing mainsail a new R1 reacher and ready for racing and cruising in the Caribbean in 2017.

### Design Philosophy:

“Extreme H2O” is the first Gunboat 66 to place an emphasis upon performance cruising catamarans. A product of the Morrelli & Melvin Design & Engineering office, “Extreme H2O” was optimized for performance throughout a wide range of wind conditions. You can enjoy sailing at over 9 knots of boat speed in only 8 knots of wind on “H2O” which is unheard of on other comparably sized catamarans.

This powerful sail plan is managed with advanced sail handling systems in both the forward cockpit with 4 high speed hydraulically driven winches and at all steering stations with push button mainsail controls. In addition, the mainsheet traveler is curved along the length of the aft beam for optimum mainsail control and safety. The running sails are all controlled through bottom up or top down furling and the mainsail is reefed with state of the art locks at the head and clew.

### Design evolution:

Morrelli & Melvin designed the “C” foils to provide up to 4,000 kg of vertical lift and the “T” rudder to reduce pitching when the wave angle is forward of the beam. The “T” foils are removable while boat is in the water so the boat can be easily configured for optimum speed and comfort.

**Construction:** “Extreme H2O” began construction in South Africa by Gunboat. After the Gunboat

facility shut down, the boat was moved to the US and completed by Westerly Marine - a custom boat builder located in Santa Ana, California. Westerly Marine specializes in carbon fiber performance vessels. Over 56,000 hours were required to complete the boat to certified standards.

Hulls: Carbon inner skin and outer skin / 25mm Corcell Sandwich Cabin: Carbon inner and outer skin / Nomex honeycomb and Corcell sandwich Cabin soles: Carbon / Nomex honeycomb sandwich All secondary taping Carbon fiber / Epoxy and post cured All laminates vacuum-bagged and post cured

### **Design Philosophy:**

“Extreme H2O” is the first Gunboat 66 to place an emphasis upon performance cruising catamarans. A product of the Morrelli & Melvin Design & Engineering office, “Extreme H2O” was optimized for performance throughout a wide range of wind conditions. You can enjoy sailing at over 9 knots of boat speed in only 8 knots of wind on “H2O” which is unheard of on other comparably sized catamarans.

This powerful sail plan is managed with advanced sail handling systems in both the forward cockpit with 4 high speed hydraulically driven winches and at all steering stations with push button mainsail controls. In addition, the mainsheet traveler is curved along the length of the aft beam for optimum mainsail control and safety. The running sails are all controlled through bottom up or top down furling and the mainsail is reefed with state of the art locks at the head and clew.

### **Design evolution:**

Morrelli & Melvin designed the “C” foils to provide up to 4,000 kg of vertical lift and the “T” rudder to reduce pitching when the wave angle is forward of the beam. The “T” foils are removable while boat is in the water so the boat can be easily configured for optimum speed and comfort.

### **Construction:**

“Extreme H2O” began construction in South Africa by Gunboat. After the Gunboat facility shut down, the boat was moved to the US and completed by Westerly Marine - a custom boat builder located in Santa Ana, California. Westerly Marine specializes in carbon fiber performance vessels. Over 56,000 hours were required to complete the boat to certified standards.

Hulls: Carbon inner skin and outer skin / 25mm Corcell Sandwich Cabin: Carbon inner and outer skin / Nomex honeycomb and Corcell sandwich Cabin soles: Carbon / Nomex honeycomb sandwich All secondary taping Carbon fiber / Epoxy and post cured All laminates vacuum-bagged and post cured

---

## **Sail Inventory**

---

All Sails by North Sails:

Mainsail #1: 186m<sup>2</sup>, 3Di, 760i (37,200 dpi) with 2 offshore plys, 3 reefs, 6 full C-Tech carbon battens

Mainsail #2 (new Jan 16) 193m<sup>2</sup>, 3Di, 870 RAW, 2 offshore plys, 3 reefs, 5 full C-Tech carbon battens

Fractional screacher 106m<sup>2</sup>, 3Di, 760i, RAW, 19,600 dpi, on vectran luff cable

Mast Head screacher 150m<sup>2</sup>, 3Di, 760i RAW on vectran luff cable for bottom up furling

Solent: 72m<sup>2</sup>, 3Di 760i (39,800 dpi), Hank On,

Staysail: 41m<sup>2</sup>, 3Di 760i (35,000 dpi) roller furling on Vectran luff cable

MH0 reacher: 265m<sup>2</sup>, 3Di 760, 16,800 dpi, internal aramid luff cable for bottom up furling

R1 (New Jan 16): 3Di 87 Raw, 8820 Dpi, internal luff cable, top down furling

A3: 350m<sup>2</sup>, laminate, designed for external aramid luff cable for top down furling.

A4: 400m<sup>2</sup>, SK150, designed for external luff aramid luff cable, top down furling

A1: 358m<sup>2</sup>, NDPO 69/49 (polyester) designed for external aramid luff cable, top down furling

Fractional reacher: 186m<sup>2</sup>, 3Di, 16,800 dpi, internal aramid luff cable bottom up furling

## Rigging

---

Mast, Boom, Forward Beam and Longeron Prepreg Carbon by Southern Spars New Zealand,

Standing Rigging is EC6 by Composite Rigging,

Running backstay are aramid

## Electronics

---

WTP3 processor

Forward cockpit - with 4qty 20/20 displays and 2 qty race displays all mounted on mast

Main cabin 1qty graphic display at Nav station and 1 qty graphic display in inside helm

Aft cockpit 4 qty race displays

1 x H5000 barometer module

1 x H5000 3D motion sensor

---

1 x BB&G 57" mast wand

1 x celesco String Pot for mast rotation sensor

1 x celesco string Pot for rudder position

1 x Simrad GS70 GPS

1 x Furuno GP33 GPS

1 x Furuno FA 150 AIS transponder and display

1 x Icom M400BB VHF with integrated AIS antenna

2 x Standard HX290 portable VHF

1 x B&G 4G Radar

1 x F250 Sat Com

2 x Naauticomp 15" sunlight Monitors

2 x Intense PC, window 7, RAM 8GB, Core 1.8GHz

2 x copies of Expedition software

1 x copy of Deckman software

2 x NavNet 3D Vector MapMedia US West Coast and Hawaii Charts

1 x Globe Surfer Quad band 3G

Cell phone receiver

1 x Wave Wifi booster for onboard wifi

1 x B&G H5000 Autopilot Computer & Controller located at interior helm

1 x Raymarine Type 3 linear drive hydraulic drive

1 x headstay load cell

2 x shroud load cell

1 x mainsheet load cell

C-Zone CAN-Bus control for non-critical electrical systems

---

## Electrical

---



Hybrid system;

2 x 4 cylinder Volvo D2-40 20kW generators, output of 260 – 320 VDC

2 x AC High efficiency Fukuta motors with 25kW continuous and 40kW peak power, 3 phase, liquid cooled

2 x AC motor Traction Controller, liquid cooled, DC input, AC motor output

1 x LiFePo4 Battery Bank, 288 volt nominal, 28.8kWh, 11 enclosures, 8 cells per enclosure

1 x 4kW AC/DC shore power battery charger

2 x 250 - 320 VDC to 24 volt charger

1 x 100 – 400 VDC to 12 volt charger

1 x 250 – 320 VDC to 230 VAC inverter – liquid cooled to run all appliances (AirCon, microwave, refrigeration)

2 x 20 Gal Torrens Water heater (Heated by engine and AC)

110VA C Sockets in all Cabins and Heads

---

## Plumbing

---

1 x 100 gallons Water 2 x 75 gallons Fuel

3 x 20 gallons Holding Tank

1 x 15 gallon sweet water tank

2 x 18 gallon hot water tanks AC or engine heated.

1 x Spectra Cape Horn water maker plumbed to a 15 gallon stand alone sweet water tank

---

## Exclusions

---

Owner's personal belongings.

---

## Disclaimer

---

The Company offers the details of this vessel or yacht in good faith but cannot guarantee or warrant the accuracy of this information nor warrant the condition of the vessel. A buyer should instruct his representatives, agents, or his surveyors, to investigate such details as the buyer

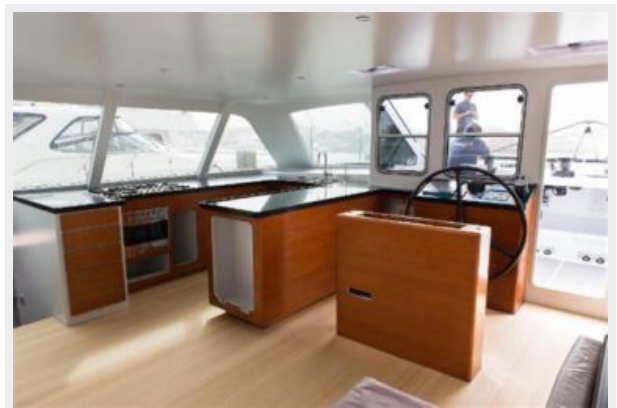
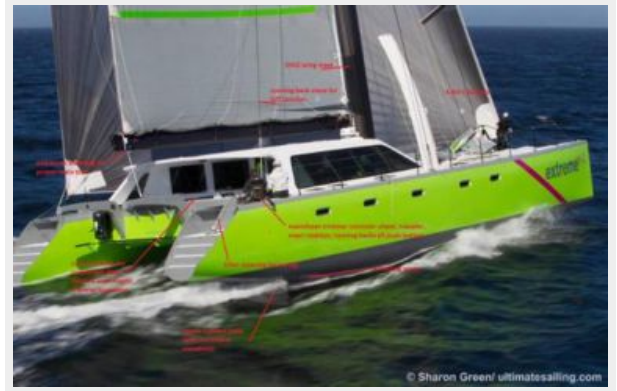
desires validated. This vessel or yacht is offered subject to prior sale, price change, or withdrawal without notice.

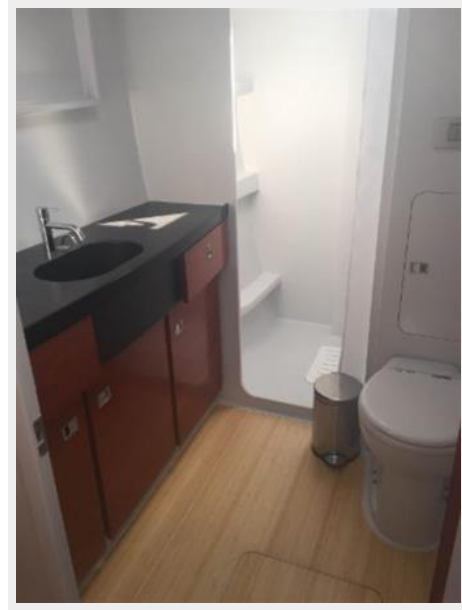
# PHOTOS















---

# CONTACTS

---

Andrey Shestakov, leading yacht broker of the sales department of Shestakov Yacht Sales Inc. Shestakov Yacht Sales Inc., the official representative of the Miami/Fort Lauderdale FL headquarters.

---

## Contact details

---

Email: [andrey@shestakovyachtsales.com](mailto:andrey@shestakovyachtsales.com)

Web: [shestakovyachtsales.com/en/](http://shestakovyachtsales.com/en/)

---

## Telephones

---

USA: +1(954)274-4435

---

## Office hours

---

Monday – Saturday: **9:00 - 21:00** EDT

Sunday: **closed**

---

## Address

---



Harbour Towne Marina, 850 NE 3rd St,  
STE 213, Dania, FL 33004