

N/A — AZIMUT



Судостроитель: AZIMUT

Год постройки: 2018

Модель: Моторная яхта

Цена: ЦЕНА ЯХТЫ ПО ЗАПРОСУ

Местонахождение: United States

Длина общая: 115' 0" (35.05m)

Ширина: 23' 9" (7.24m)

Крейс. скорость: 21 Kts. (24 MPH)

Макс. скорость: 25 Kts. (29 MPH)

Купить N/A — AZIMUT а также выбрать подходящую вам яхту из нашего каталога яхт вам поможет опытный яхтенный брокер Андрей Шестаков. На сегодняшний день компания Shestakov Yacht Sales Inc. имеет большое количество яхт в собственном списке продаж, а также тесно сотрудничает со всеми крупными яхтенными производителями по всему миру.

Для того чтобы купить яхту N/A — AZIMUT а также проконсультироваться по любому вопросу связанному с покупкой, продажей, чартером яхт позвоните по телефону **+7(918)465-66-44**.

ОГЛАВЛЕНИЕ

ОГЛАВЛЕНИЕ	2
ХАРАКТЕРИСТИКИ	4
Обзор	4
Основная информация	4
Размеры	4
Скорость, вместимость и масса	4
Размещение	4
Корпус и палуба	5
Информация о двигателе	5
ПОДРОБНОЕ ОПИСАНИЕ	6
Accommodations	6
Salon	6
Galley	6
Master Stateroom	7
Master Head	7
Vip Stateroom- Port	7
VIP Head- Port	7
VIP Stateroom STBD	8
VIP Head- STBD	8
Twin Guest Cabin- Port	9
Guest Head-Port	9
Twin Guest Cabin- STBD	9
Guest Head- STBD	9
Crew Mess	10
Captain Cabin	10
Captain Head	10
Crew Cabin- Port 1	10
Crew Head - Port 1	11

Crew Cabin- Port 2	11
Crew Head- Port 2	11
Crew Cabin- STBD	11
Crew Head- STBD	11
Flybridge	12
Cockpit	12
Roll bar	13
Intercom System	13
Engines room	13
Bilge and fire system	13
Исключения	14
Отказ от ответственности	14
ФОТОГРАФИИ	15
КОНТАКТЫ	24
Контактная информация	24
Телефоны	24
Время работы	24
Адрес	24

ХАРАКТЕРИСТИКИ

Обзор

Beautiful 2018 115' Azimut Grande

TRADES WELCOME SPECIAL DEAL

Основная информация

Тип судна: Моторная яхта

Подкатегория: Flybridge

Модельный год: 2018

Год постройки: 2018

Страна: United States

Открытая палуба мостика: Да

Кубрик: Да

Размеры

Длина общая: 115' 0" (35.05m)

Длина по ватерлинии: 93' 5" (28.47m)

Ширина: 23' 9" (7.24m)

Скорость, вместимость и масса

Крейс. скорость: 21 Kts. (24 MPH)

Макс. скорость: 25 Kts. (29 MPH)

Водоизмещение: 308000 Pounds

Вместимость воды: 792 Gallons

Вместимость сточного бака: 660 Gallons Объем топливного бака: 4755 Gallons

Размещение

Всего кают: 5

Всего ком. состава: 5

Корпус и палуба

Материал корпуса: Fiberglass

Информация о двигателе

Производитель: MTU

Модель: 16V2000M93

Тип двигателя: Inboard

Тип топлива: Diesel

ПОДРОБНОЕ ОПИСАНИЕ

Accommodations

GUEST & OWNER:

- **MAIN DECK:** Main Saloon, Main Foyer, Powder Room, Owner's Cabin, Owner's Bathroom.
- **LOWER DECK:** Port Vip Cabin, Port Vip Bath, Port Twin Cabin, Port Twin Bath, Stbd Vip Cabin, Stbd Vip Bath, Stbd Twin Cabin, Stbd Twin Bath, Lobby, Beach Area.

CREW:

- **LOWER DECK:** Crew mess, (2) Port Crew Cabin, (2) Port Crew Bath, Captain's Cabin, Captain's bath, Starboard Crew Cabin, Starboard Crew Bath, Crew Corridor
- **MAIN DECK:** Pantry, Galley, Laundry, Crew Lobby and Crew Corridor.

Salon

- Ceiling Spotlights with fitted dimmers
- Socket for PABX Phone System
- 55" Samsung LED HD TV
- Sony Blue Ray Player
- Apple TV
- Azimut Selection Sofa that seats 8
- Azimut Selection Sofa that seats 2
- Azimut Selection Dinning Table and chair set that seats 10
- Carpet floor

Salon Bar

- Isotherm Ice maker
- Isotherm Mini Fridge

Galley

- Miele Cooktop
- Miele Exhaust Hood
- Miele Oven
- Miele Microwave
- Miele Dishwasher
- Freezer/Fridge

Master Stateroom

- 40" Samsung HD LED TV
- Sony Blue Ray Player
- Bose Amplifier
- Apple TV
- Azimut Selection Desk
- Azimut Selection Desk Chair
- (2) Azimut Selection Armchair
- Azimut Selection Coffee Table
- Carpet floor

Master Head

- Wood Floor
- Sink
- Washbasin Faucet
- Shower Mixer
- Shower Diverter
- Shower Head
- Shower Handset
- Soap Holder
- Glass Holder
- Towel Rail 45cm
- Towel Rail 60CM
- Toilet Brush Holder
- Clothes Hook
- Fans and Extractors

Vip Stateroom- Port

- 22' LED Samsung TV
- Sony Blue Ray Player
- Denon AVR- X1100 Amplifier
- B&W (1) pair of Loudspeakers
- (2) Vanity Stool
- Carpet Floor

VIP Head- Port

- Wood Floor

- Sink
- Washbasin Faucet
- Shower Mixer
- Shower Diverter
- Shower Head
- Shower Handset
- Soap Holder
- Glass Holder
- Towel Rail
- Toilet Brush Holder
- Clothes Hook
- Fans and Extractors

VIP Stateroom STBD

- 22' LED Samsung TV
- Sony Blue Ray Player
- Denon AVR- X1100 Amplifier
- B&W (1) pair of Loudspeakers
- (2) Vanity Stools
- Carpet floor

VIP Head- STBD

- Wood Floor
- Sink
- Washbasin Faucet
- Shower Mixer
- Shower Diverter
- Shower Head
- Shower Handset
- Soap Holder
- Glass Holder
- Towel Rail
- Toilet Brush Holder

- Clothes Hook
- Fans and Extractors

Twin Guest Cabin- Port

- 22" Samsung LED TV
- Sony Blue Ray Player
- Denon AVR-X1100 Amplifier
- B&W (1) Pair of Loudspeakers
- Carpet Floor

Guest Head-Port

- Wood Floor
- Sink
- Washbasin Faucet
- Shower Mixer
- Shower Diverter
- Shower Head
- Shower Handset
- Soap Holder
- Glass Holder
- Towel Rail
- Toilet Brush Holder

Twin Guest Cabin- STBD

- 22" Samsung LED TV
- Sony Blue Ray Player
- Denon AVR-X1100 Amplifier
- B&W (1) Pair of Loudspeakers
- Carpet Floor

Guest Head- STBD

- Wood Floor
- Sink
- Washbasin Faucet
- Shower Mixer

- Shower Diverter
- Shower Head
- Shower Handset
- Soap Holder
- Glass Holder
- Towel Rail
- Toilet Brush Holder

Crew Mess

- TV 22" Samsung LED
- Mini Hi-fi player Yamaha
- (2) Loudspeakers Promar 6" PMS6
- (2) Sink in Galley/Pantry Area
- Faucet in Galley/Pantry Area
- Miele Fridge

Captain Cabin

- Mini Hi-fi Yamaha CRX-N560 CD
- (2) Loudspeakers Promar 6" PMS6.

Captain Head

- Sink
- Faucet
- Shower column set
- Soap Holder
- Glass Holder
- Towel Rail
- Toilet Brush Holder
- Toilet Paper Holder
- Clothes Hook

Crew Cabin- Port 1

- Car stereo Sony
- Loudspeakers Promar 6" PMS6

Crew Head - Port 1

- Sink
- Faucet
- Shower column set
- Soap Holder
- Glass Holder
- Towel Rail
- Toilet Brush Holder
- Toilet Paper Holder
- Clothes Hook

Crew Cabin- Port 2

- Car stereo Sony
- Loudspeakers Promar 6" PMS6

Crew Head- Port 2

- Sink
- Faucet
- Shower column set
- Soap Holder
- Glass Holder
- Towel Rail
- Toilet Brush Holder
- Toilet Paper Holder
- Clothes Hook

Crew Cabin- STBD

- Car stereo Sony
- Loudspeakers Promar 6" PMS6

Crew Head- STBD

- Sink
- Faucet
- Shower column set
- Soap Holder

- Glass Holder
- Towel Rail
- Toilet Brush Holder
- Toilet Paper Holder
- Clothes Hook

Flybridge

- (4) Loudspeakers Promar 8" PMR8
- Amplifier Bose SA-3
- Multifunction display Furuno MFD12
- Multifunction display Furuno RD-33
- Autopilot Furuno Nav 711
- Rudder angle indicator Furuno FI-506
- VHF repeater
- Compass Zenith

External AFT Area:

- (3) Azimut Selection Sunbeds
- Azimut Selection Coffee Table
- Azimut Selection Dining Table set that seats 10
- (5) Azimut Selection Bar Stool

Wheelhouse

- Azimut Selection Coffee Table
- Azimut Selection Pilot Seat
- Teak & Holly Floor

Flybridge Bar

- Isotherm Ice Maker
- Isotherm Minifridge

Cockpit

Cockpit Area

- Azimut Selection Dining Table set that seats 4
- Azimut Collection Coffee table

Bow Living Area

- Azimut Selection Coffee Table

Roll bar

- Radar antenna Furuno 4ft 6kW
- NAVnet 3D BB
- VHF antenna BA 197
- GPS antenna Furuno GP-330B
- Weather station Airmair WX 150

Intercom System

One emergency internal communication system will be fitted in:

- wheelhouse
- engine room
- emergency steering location
- aft cockpit
- fore mooring station

Engines room

MTU16V2000M96, of 1790 kW (2400 BHP) @ 2450 rpm each, with Blue Vision NG Basic electronics. Exhaust emissions of these engines are in compliance with EPA TIER III and IMO TIER II regulations.

The generating system consist of two diesel generators with the following characteristics:

- Manufacturer: Kohler Models: 55EFOZDJ Rated outputs: 53 kW Rated voltage and frequency: 400V AC / 50 Hz Number of phases: 3 RPM: 1500 Insulation class: H Tension regulation: ± 0.5 % Frequency regulation: 0.5 % Starting system: 12 V DC

Bilge and fire system

FIRE PUMP: 1 electric self priming pump installed in the engine room for sea water fire extinguishing system. The pump is connected with the motorpump. BILGE PUMPS: 1 electric self priming pump installed in the engine room for main bilge system. The pump is connected with the motorpump. 1 dedicated electric pump installed for the garage bilge system. MOTORPUMP: 1 motorpump installed for bilge and fire systems. BILGE AND FIRE PIPING: Each watertight compartment have a separate bilge suction, with electric valve, connected through a bilge manifold to the electric pump. Bilge lines in stainless steel AISI 316 on suction side and in CuNi

90-10 on delivery side. Vacuum and pressure gauge sets arranged in a support as close as possible to the main bilge pump, fire pump and motorpump. The garage is protected by a water jet nozzles' system connected to the fire main by a manually operated valve. Fire hydrant valves, with fire hoses and nozzles, fitted in the following positions: 2 on main deck, 1 on flybridge.

The hawse pipes are connected to the fire manifold for sea water chain washing. Fire lines in CuNi 90-10 of the pressfitting type. ENGINE ROOM FIRE EXTINGUISHING SYSTEM: A FM 200 fixed fire extinguishing system installed for engine room, with adequate nozzles and a release handle fitted on the emergency control panel situated near the access to the engine room/garage area.

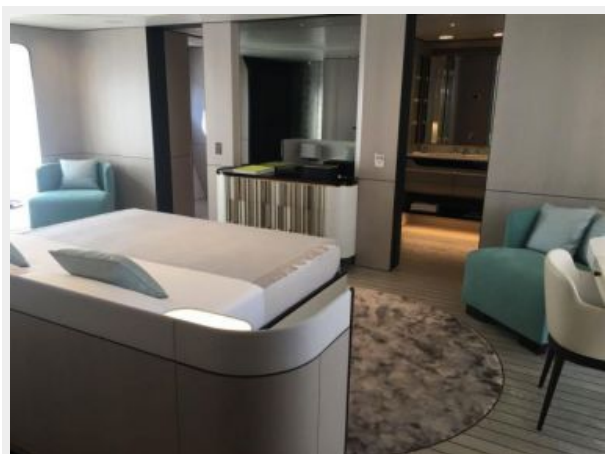
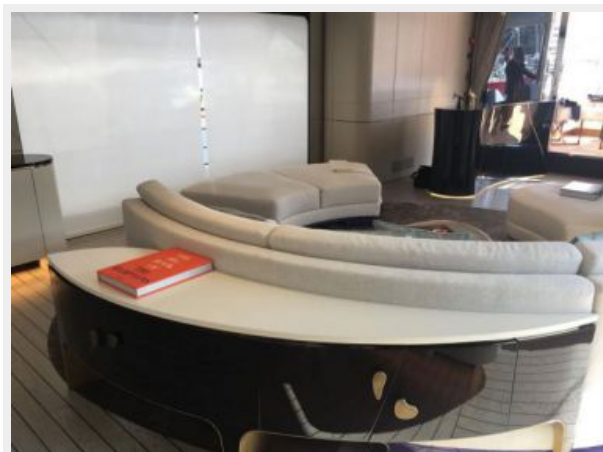
Исключения

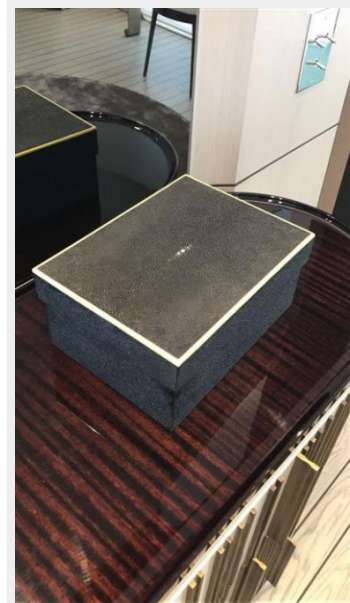
При продаже яхты исключаются личные вещи владельца.

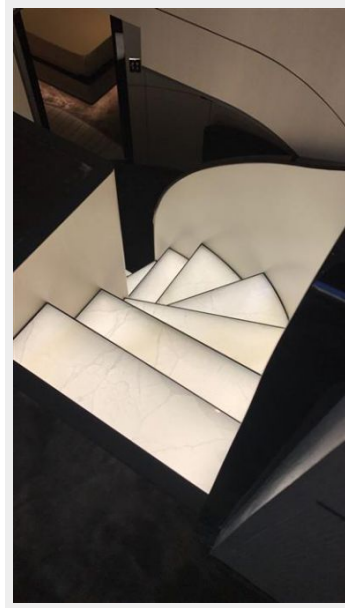
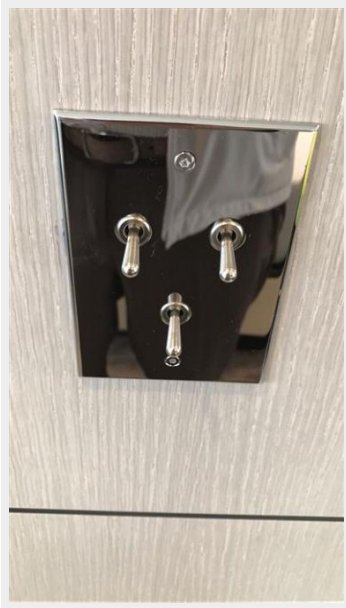
Отказ от ответственности

Компания предоставляет описание судна или яхты добросовестно, но не может гарантировать точность этой информации, а также не ручается за техническое состояние. Покупатель должен проинструктировать своих агентов или оценщиков исследовать представленную информацию более подробно, по собственному желанию. Продажа судна или яхты, изменение цены или снятие с продажи будет происходить без предварительного уведомления.

ФОТОГРАФИИ

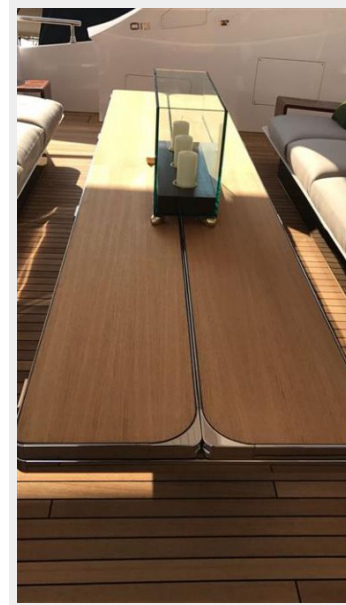


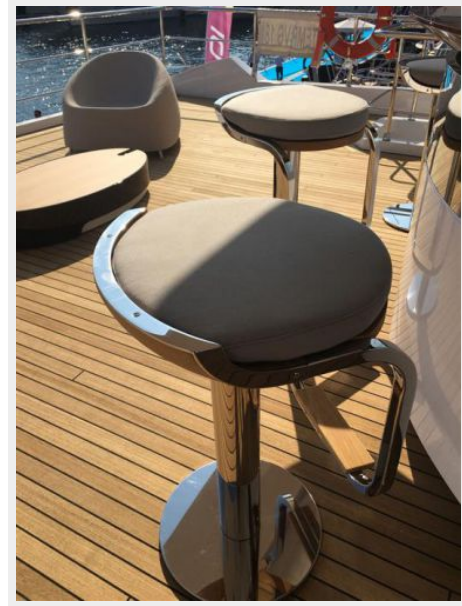




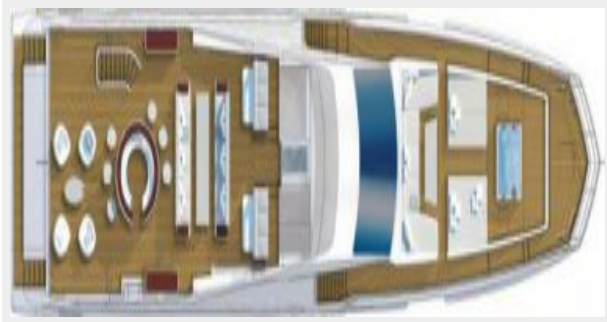
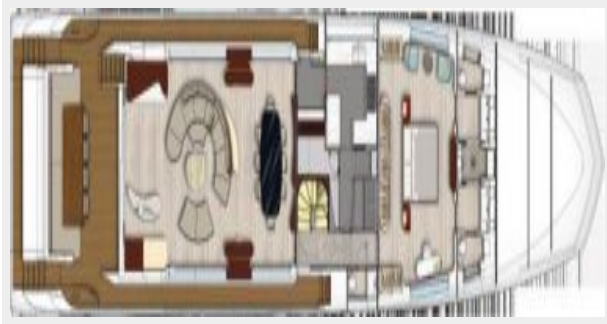












КОНТАКТЫ

Андрей Шестаков (Andrey Shestakov) – ведущий яхтенный брокер отдела продаж яхт и судов компании Shestakov Yacht Sales Inc. Официальный представитель Shestakov Yacht Sales Inc. для русскоговорящих клиентов в центральном офисе компании в Майами/Форт Лодердейл/Флорида/США.

Контактная информация

Email: andrey@shestakovyachtsales.com

Web: shestakovyachtsales.com

Телефоны

Краснодарский край: **+7(918)465-66-44**

США, Майами, Флорида: **+1(954)274-4435**

Время работы

Понедельник – Суббота: **9:00 - 21:00**
EDT

Воскресенье: **Закрито**

Адрес



Harbour Towne Marina, 850 NE 3rd St,
STE 213, Dania, FL 33004